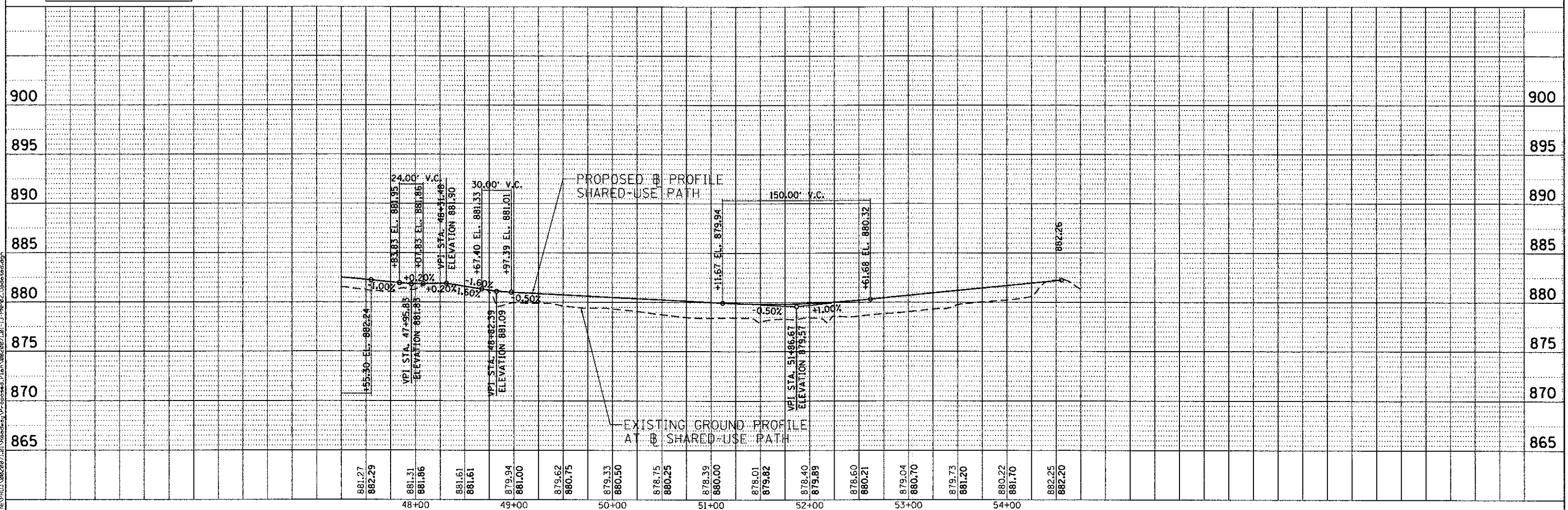


SEE SHEET 30 FOR
INTERSECTION CURB RAMP DETAILS

SIDE CURB IS INCIDENTAL TO
PCC SIDEWALK, 5"

- NOTES:
- (A) CONCRETE CURB AND GUTTER REMOVAL AND REPLACEMENT
 - (B) PAVED DITCH REMOVAL
 - (C) SIGN PANEL-TYPE I AND METAL POST TYPE A
 - (D) RELOCATE EXISTING PEDESTRIAN PUSH BUTTON
 - (E) REBUILD EXISTING HANDHOLE



<p>ENGINEERING CONSULTANT Clorba Group, Inc. CONSULTING ENGINEERS 8507 North Cumberland Avenue, Suite 202 Chicago, Illinois 60639 Tel: 773.775.6000 Fax: 773.775.6014 Email: clorba@clorba.com</p>	USER NAME = aharr	DESIGNED - RJR	REVISED -	<p align="center">STATE OF ILLINOIS DEPARTMENT OF TRANSPORTATION</p>	<p align="center">MCHENRY AVENUE PROPOSED PLAN AND PROFILE</p>	F.A.U. RTE. 120	SECTION 11-00115-00-RS	COUNTY MCHENRY	TOTAL SHEETS 62	SHEET NO. 22
	PLOT SCALE = 50.0000' / in.	CHECKED - MRJ	REVISED -			SCALE: 1" = 50'	SHEET NO. OF SHEETS STA. TO STA.	CONTRACT NO. 63806	ILLINOIS FED. AID PROJECT	
	PLOT DATE = 2/22/2013	DATE - FEBRUARY 4, 2013	REVISED -							