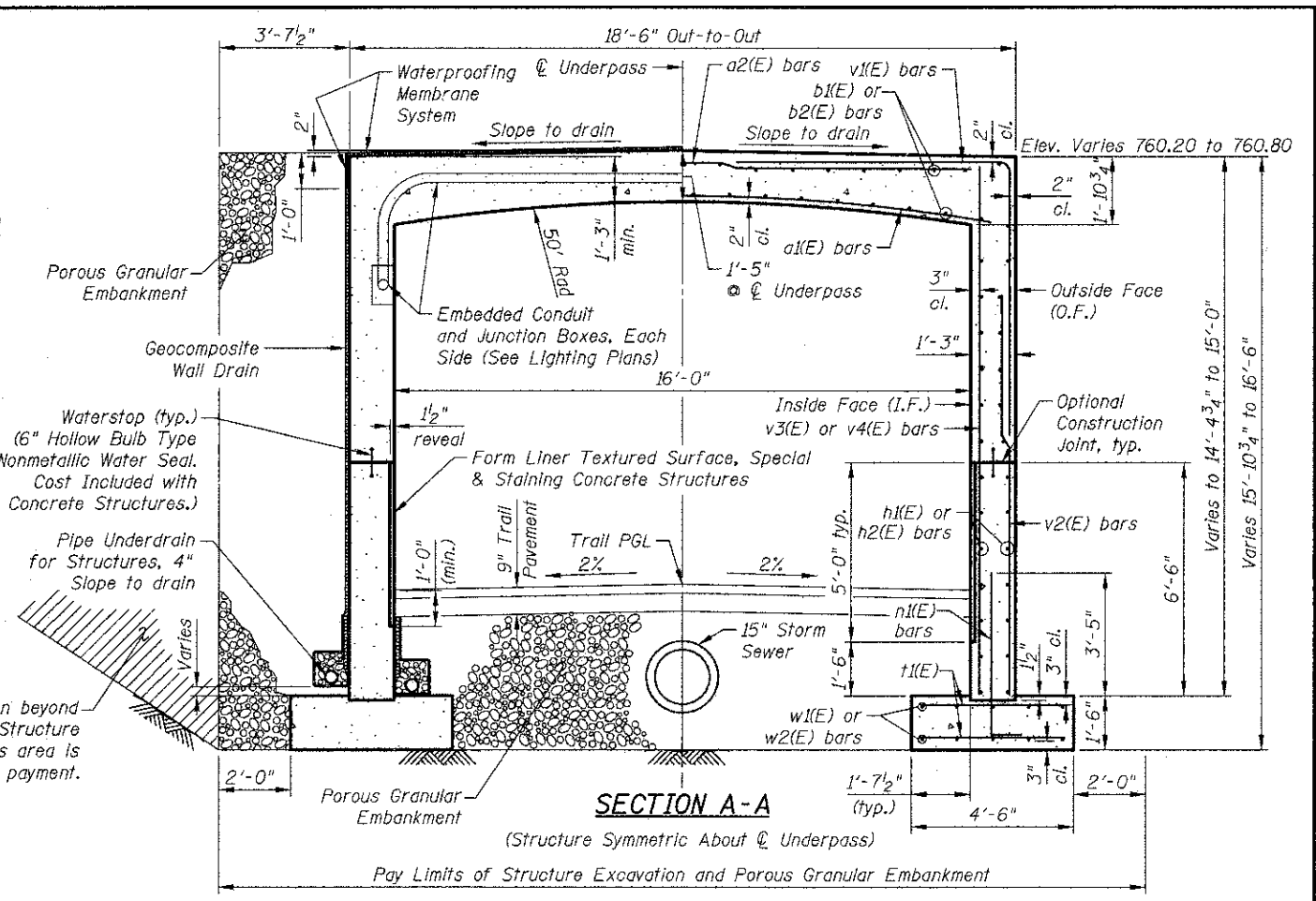
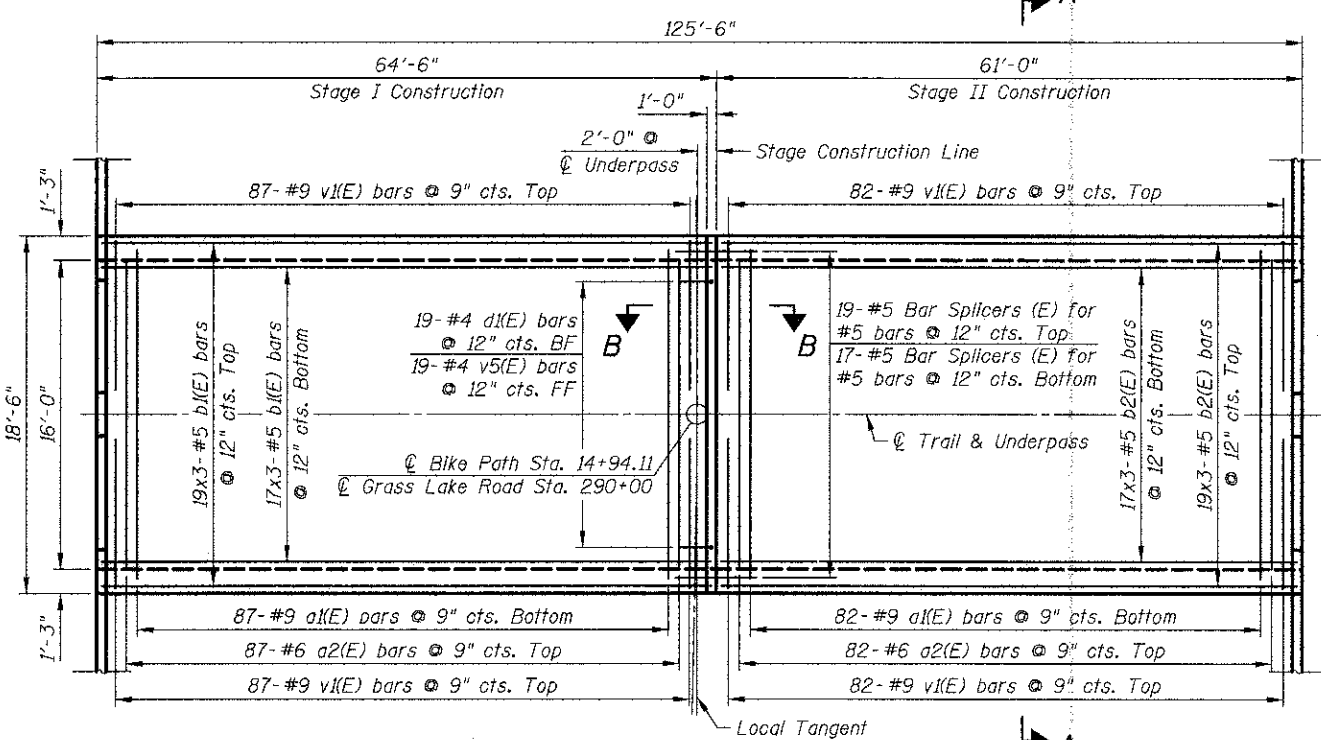


ELEVATION
(East Wall Shown - West Wall is Similar)

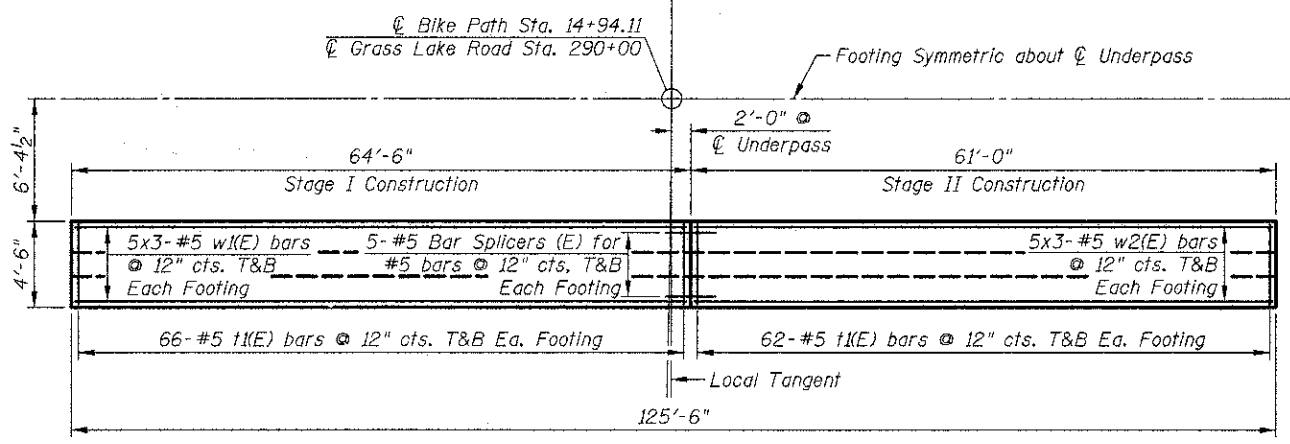


SECTION A-A
(Structure Symmetric About ϕ Underpass)

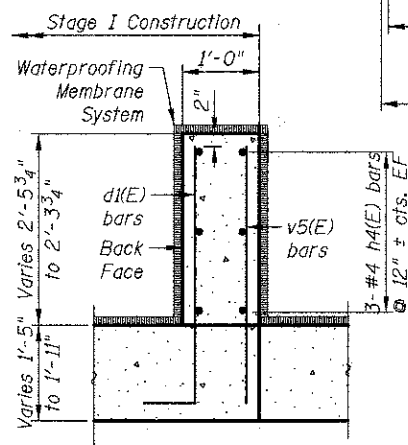
Note:
Maximum Applied Bearing Pressure = 2,990 psf
Maximum Allowed Bearing Pressure = 3,000 psf



TOP SLAB - PLAN



FOOTING - PLAN
(West Footing Shown - East Footing Similar)



SECTION B-B
Underpass Reinforcement Not Shown

MINIMUM LAP

Bar Size	Class C
#4	2'-7"
#5	3'-3"
#6	3'-10"
#7	5'-2"
#8	6'-9"
#9	8'-7"

- Note:
1. See sheet S4 for Bill of Material and Bar Diagrams.
2. See sheet S5 & S6 for Pipe Underdrain Invert Elevations and S7 for Pipe Underdrain Detail.
3. See sheet S8 for Architectural Details.

12/12/2012 14:21:17 PM J:\2617\CAD\Final\Plane Underpass\03_underpass_plan.rxdgn