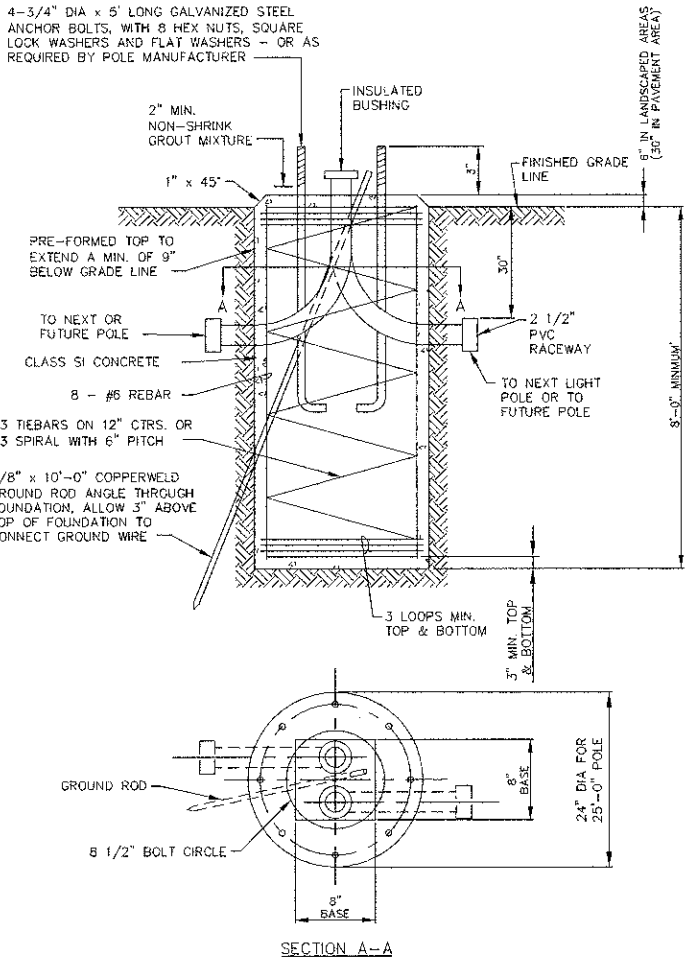


LIGHTING SCHEDULE OF QUANTITIES

GENERAL NOTES

1. ALL WORK SHALL BE IN ACCORDANCE WITH THE LATEST EDITION OF THE FOLLOWING SPECIFICATIONS, WHICH ARE HEREBY MADE A PART HEREOF:
- A. STANDARD SPECIFICATIONS FOR ROAD AND BRIDGE CONSTRUCTION, ILLINOIS DEPARTMENT OF TRANSPORTATION.
 - B. THE NATIONAL ELECTRICAL CODE.
 - C. LOCAL CODES AND ORDINANCES.
2. THE CONTRACTOR SHALL SUBMIT SPECIFICATIONS, SHOP DRAWINGS, AND CATALOG CUTS FOR ALL LIGHTING ITEMS TO THE ENGINEER FOR REVIEW BEFORE ORDERING ANY MATERIALS.
3. ONLY SUBMERSIBLE WATERPROOF TYPE SPLICES OF THE UNIT DUCT AND CIRCUIT CABLES WILL BE ALLOWED IN BELOW GROUND HANDHOLES.
4. THE CONTRACTOR SHALL BE RESPONSIBLE FOR COORDINATING TOP OF CONCRETE FOUNDATION HEIGHTS WITH FINISHED GRADE ELEVATIONS.
5. ALL ELECTRIC CABLE SHALL BE FULLY PIGMENTED COLOR CODED AND TAGGED AS SHOWN ON THE DRAWINGS.
6. ALL ELECTRICAL EQUIPMENT AND MATERIAL SHALL BE UL LISTED AND LABELED.
7. POLE FUSES AND ASSOCIATED HARDWARE/MATERIAL AND INSTALLATION SHALL BE INCLUDED IN THE LIGHTING UNIT COMPLETE. SPECIAL PAY ITEM.
8. THE INSTALLATION OF WARNING TAPE SHALL BE REVIEWED BY THE ENGINEER PRIOR TO BACKFILLING, AS APPLICABLE.
9. THE CONTRACTOR SHALL PERFORM ELECTRICAL TESTING IN THE PRESENCE OF THE ENGINEER. THE ELECTRICAL TESTING SHALL BE IN ACCORDANCE WITH THE STANDARD SPECIFICATIONS.
10. IT SHALL BE THE CONTRACTOR'S RESPONSIBILITY TO MARK THE PROPOSED LOCATIONS OF ALL LIGHTING POLES AND CONTROLLER. THE EXACT LOCATION OF ALL SHALL BE CONFIRMED WITH THE ENGINEER PRIOR TO START OF WORK.
11. GROUND RODS SHALL NOT BE PAID FOR SEPARATELY BUT SHALL BE INCLUDED IN THE COST OF THE ITEM IT IS GROUNDING.

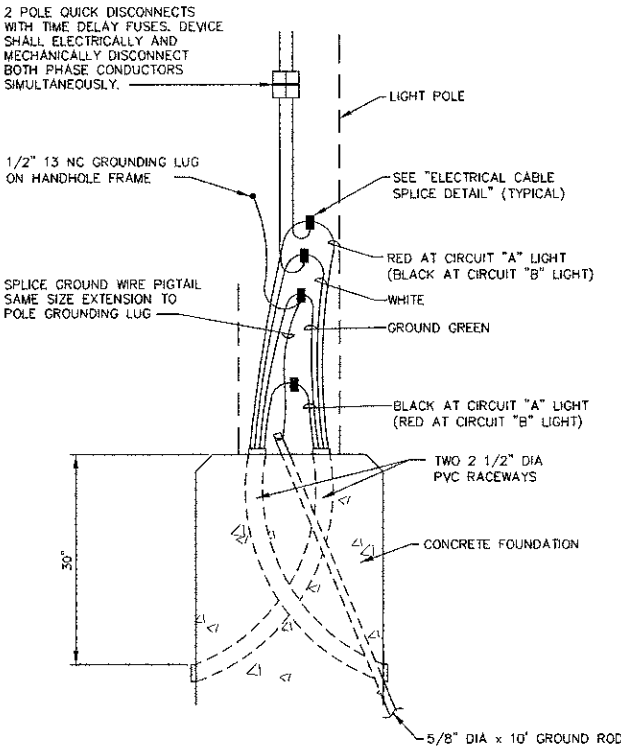
CODE NO.	ITEM	UNIT	TOTAL QUANTITY
80400100	ELECTRIC SERVICE INSTALLATION	EACH	1
80400200	ELECTRIC UTILITY SERVICE CONNECTION	L SUM	1
81028210	UNDERGROUND CONDUIT, GALVANIZED STEEL, 2 1/2" DIA.	FOOT	60
81400730	HANDHOLE, COMPOSITE CONCRETE	EACH	2
81603047	UNIT DUCT, 600V, 3-1C NO.6, 1/C NO.6 GROUND, (XLP-TYPE USE), 1 1/4" DIA. POLYETHYLENE	FOOT	1934
81702400	ELECTRIC CABLE IN CONDUIT, 600 V (XLP-TYPE USE) 3-1/C NO. 2	FOOT	62
83600200	LIGHT POLE FOUNDATION, 24" DIAMETER	FOOT	176
X8250500	LIGHTING UNIT COMPLETE, SPECIAL	EACH	20
X8250505	LIGHTING CONTROLLER, SPECIAL	EACH	1



LIGHT POLE FOUNDATION DETAIL
N.T.S.

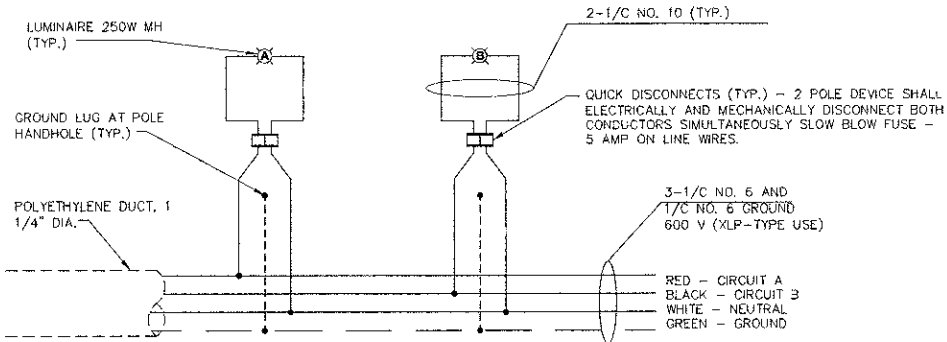
NOTES:

- VERIFY ALL POLE RELATED DIMENSIONS AND INFORMATION WITH POLE MANUFACTURER PRIOR TO FABRICATION OF FOUNDATION.
- MINIMUM COMPRESSIVE STRENGTH FOR CONCRETE SHALL BE 3500 PSI AT THE END OF 28 DAYS.
- EXCAVATION OF THE POLE FOUNDATION SHALL BE MADE WITH AN AUGER 24" IN DIAMETER.
- THE ANCHOR BOLTS SHALL BE A TACK WELDED TYPE BOLT OR HOOK TYPE BOLT. COLD BENDING OF THE HOOK BOLT WILL NOT BE ALLOWED.
- THE ANCHOR BOLTS AND RACEWAYS SHALL BE PROPERLY SECURED IN PLACE BEFORE THE CONCRETE IS PLACED IN THE FORM.
- THE ENTIRE LENGTH OF THE ANCHOR BOLTS AS WELL AS THE NUTS AND WASHERS SHALL BE HOT DIP GALVANIZED IN ACCORDANCE WITH THE REQUIREMENTS OF ASTM DESIGNATION A153.
- RACEWAYS SHALL PROJECT 1" ABOVE THE TOP OF THE FOUNDATION.
- CONCRETE SHALL BE CLASS "B". THE CONCRETE FOUNDATION MUST BE CURED FOR 10 DAYS BEFORE THE LIGHT STANDARD IS ERECTED.
- THE CABLE TRENCH SHALL BE BACKFILLED AND FIRMLY COMPACTED BEFORE THE LIGHT IS ERECTED.
- UNIT DUCT SHALL EXTEND 12" ABOVE CONCRETE FOUNDATION.



LIGHT POLE WIRING DETAIL
N.T.S.

LIGHTING UNIT COMPLETE, SPECIAL
N.T.S.



CIRCUIT DETAIL
N.T.S.