

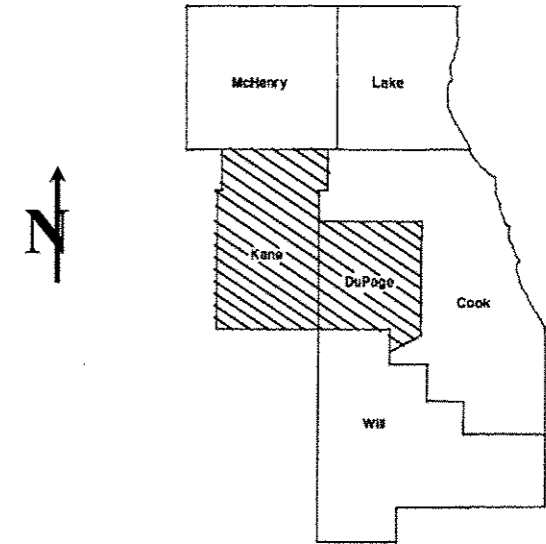
04-26-13 LETTING ITEM 124

ROUTE	SECTION	COUNTY	TOTAL SHEETS	SHEET NUMBER
VARIOUS	2013-020 DTR	KANE/DUPAGE	6	1

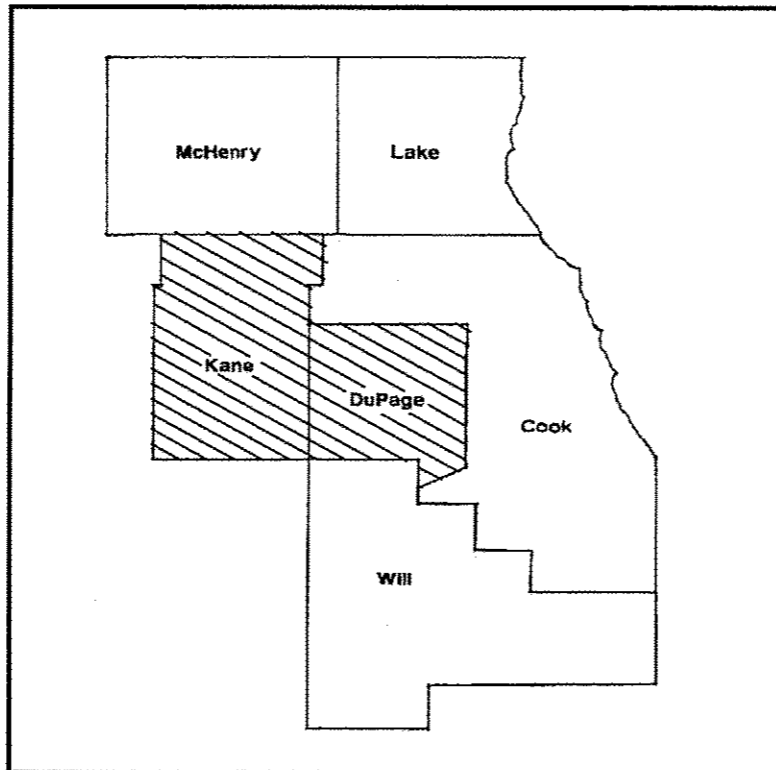
STATE OF ILLINOIS
DEPARTMENT OF TRANSPORTATION
DIVISION OF HIGHWAYS
DISTRICT ONE
PROPOSED HIGHWAY PLANS

ROUTE: VARIOUS
SECTION 2013-020DTR
DEAD TREE REMOVAL
KANE & DUPAGE COUNTIES
C-91-215-13

CONTRACT 60W20
D-91-104-13



LOCATION OF IMPROVEMENT INDICATED THUS:



**IMPROVEMENT IS IN VARIOUS LOCATIONS
WITHIN KANE & DUPAGE COUNTIES**

STATE OF ILLINOIS
DEPARTMENT OF TRANSPORTATION
DIVISION OF HIGHWAYS
SUBMITTED: February 6 2013
John Fatorian
DEPUTY DIRECTOR OF HIGHWAYS, REGION ENGINEER
March 22 2013
John D. Baranzelli, PE, PE
ENGINEER OF DESIGN AND ENVIRONMENT
March 22 2013
Omur Osman, PE, PE
DIRECTOR OF HIGHWAYS, CHIEF ENGINEER

PRINTED BY THE AUTHORITY

J.U.L.I.E.: JOINT UTILITY LOCATION
INFORMATION FOR EXCAVATION

CONTRACT 60W20

DISTRICT ONE BUREAU OF MAINTENANCE: J. STUMPNER
MAINTENANCE LANDSCAPE DESIGNER: R. WANNER / T. JACKSON (847) 705-4171

ROUTE	SECTION	COUNTY	TOTAL SHEETS	SHEET NUMBER
VARIOUS	2013-002 DTR	KANE/DUPAGE	6	2

CONTRACT 60W20

INDEX OF SHEETS

- 1) COVER SHEET
- 2) INDEX OF SHEETS, STATE STANDARDS, GENERAL NOTES
- 3) SUMMARY OF QUANTITIES
- 4) SAMPLE STANDARD WORK ORDER
- 5) SAMPLE EXPEDITED WORK ORDER
- 6) TC-17 TRAFFIC CONTROL DETAIL FOR FREEWAY SHOULDER CLOSURES AND PARTIAL RAMP CLOSURES

STATE STANDARDS

701001-02 701006-04 701101-03 701106-02 701201-04

701301-04 701421-05 701501-06 701601-08 701901-02

GENERAL NOTES

TREE REMOVAL, ACRE includes removal of trees, shrubs, bushes, saplings, logs, other vegetation, and stumps of a diameter less than 6 inches. All trees and other stumps within the Right of way shall be removed to a depth of not less than **6 inches** below the elevation of the subgrade, the finished earth surface, or the ground line.

TREE REMOVAL 6-15 & over 15 inches will not require removal of stumps.

ILLINOIS DEPARTMENT OF TRANSPORTATION

INDEX OF SHEETS

DEAD TREE REMOVAL

ROUTE	SECTION	COUNTY	TOTAL SHEETS	SHEET NUMBER
VARIOUS	2013-002 DTR	KANE/DUPAGE	6	3

CONTRACT 60W20

SUMMARY OF QUANTITIES


FORMAL CONTRACTS FUND 100% STATE
URBAN

PAY ITEM	DESCRIPTION	UNIT	0031	0031	TOTAL
			KANE COUNTY	DUPAGE COUNTY	
20100110	TREE REMOVAL (6 TO 15 UNITS DIAMETER)	UNIT	1000	1000	2000
20100210	TREE REMOVAL (OVER 15 UNITS DIAMETER)	UNIT	1100	1100	2200
20100500	TREE REMOVAL, ACRES	ACRE	1	1	2
20101300	TREE PRUNING (1 TO 10 INCH DIAMETER)	EACH	5	5	10
20101350	TREE PRUNING (OVER 10 INCH DIAMETER)	EACH	5	5	10
67100100	MOBILIZATION	L SUM	0.5	0.5	1
X0325222	WEED CONTROL, BASAL TREATMENT	GALLON	5	5	10
X2010400	STUMP REMOVAL ONLY	UNIT	100	100	200
Z0064800	SELECTIVE CLEARING	UNIT	5	5	10

ILLINOIS DEPARTMENT OF TRANSPORTATION
SUMMARY OF QUANTITIES
DEAD TREE REMOVAL

ROUTE	SECTION	COUNTY	TOTAL SHEETS	SHEET NUMBER
VARIOUS	2013-002 DTR	KANE/DUPAGE	6	5

CONTRACT 60W20

 Illinois Department of Transportation	Tree Removal Work Order Number:
	ID Number:

EXPEDITED REMOVAL

Date: _____ Time: _____ Contract: 60W20

Kane	DuPage		Work Order Prepared By	Team Section
------	--------	--	------------------------	--------------

Marked Route: _____ Municipality: _____ Side of Road: _____

Location: _____

Tree tape was used to measure the diameter of the trees.

PAY ITEM	TREE #	QUANTITY	24 HOUR	48 HOUR	TOTAL
TREE REMOVAL (UNITS)			2X	1.5X	
6"-15"					
TREE REMOVAL (UNITS)			2X	1.5X	
>15"					

Special Instructions _____

Reason for removal: _____

AUTHORIZATION OF WORK	
Resident Engineer/Technician Signature	
Date/Time work order issued	Contractor Initials

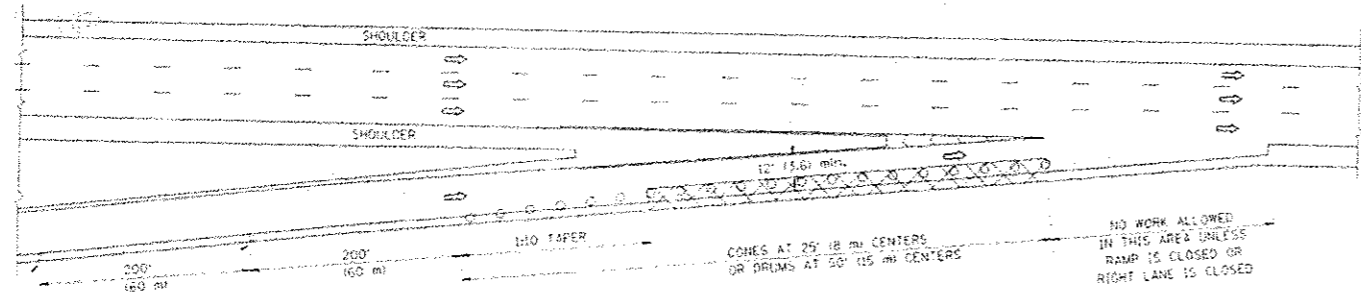
CERTIFICATION OF COMPLETED WORK	
Contractor Signature	
Date/Time work order completed	

OFFICE USE ONLY		
Measured in Place by:	Initials(s)	Date
Calculated by:	_____	_____
Checked by:	_____	_____

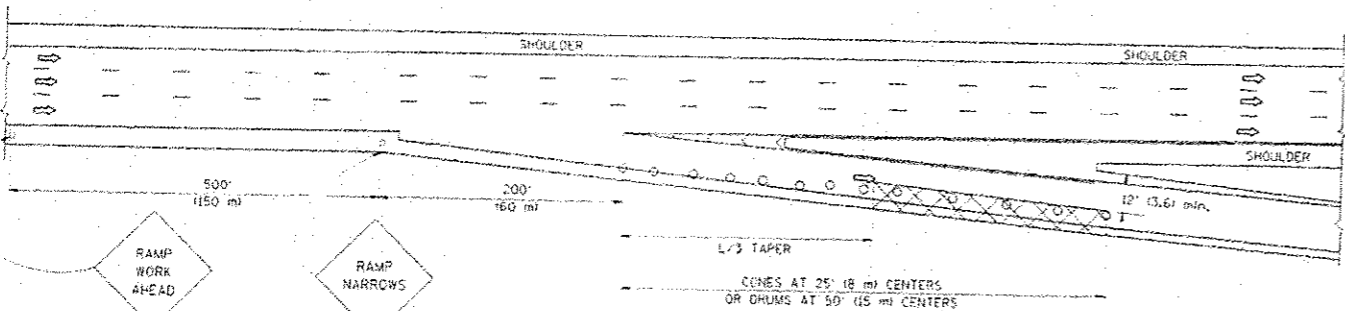
INSPECTION AND ACCEPTANCE OF COMPLETED WORK	
Inspector Signature	
Date work order Inspected and Accepted	
This is to certify that the work order has been completed.	

ILLINOIS DEPARTMENT OF TRANSPORTATION
 SAMPLE EXPEDITED WORK ORDER
 DEAD TREE REMOVAL

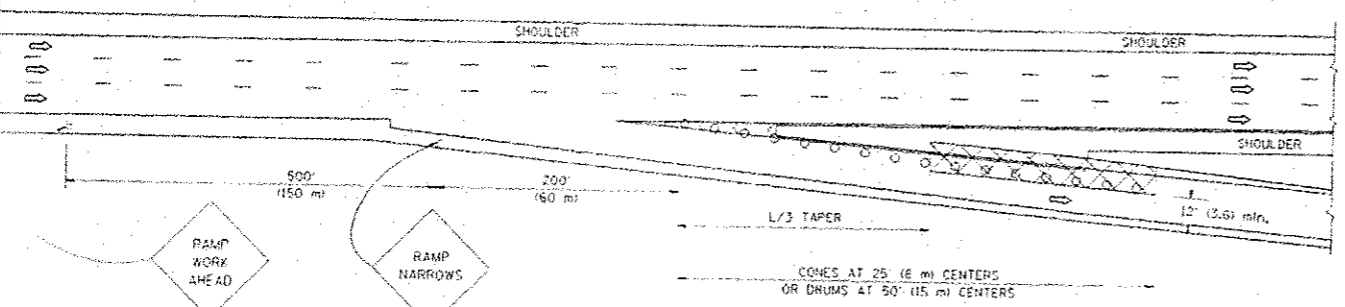
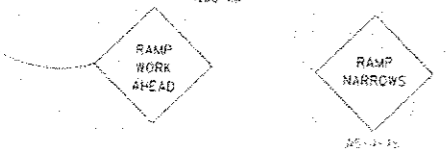
PARTIAL RAMP CLOSURE DETAILS



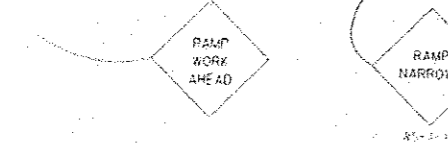
TYPICAL ENTRANCE RAMP



TYPICAL EXIT RAMP



TYPICAL EXIT RAMP



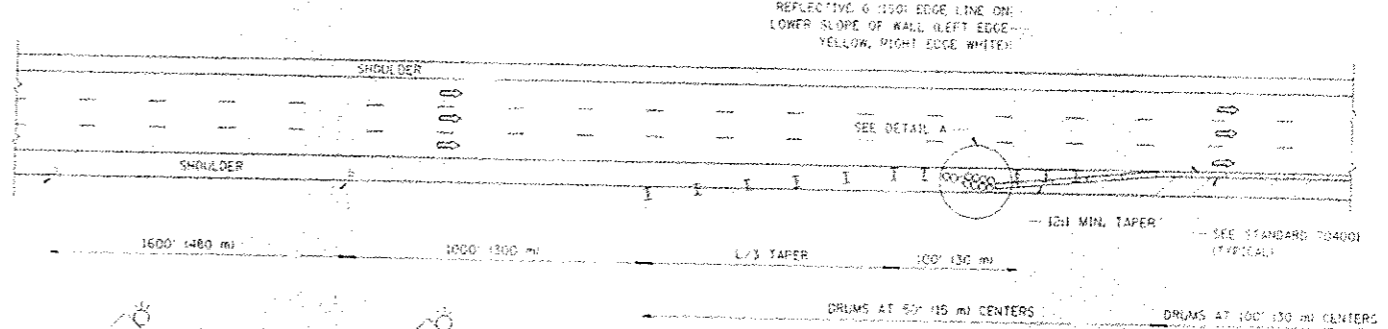
SYMBOLS

- ACTIVE WORK AREA
- SIGN ON PORTABLE OR PERMANENT SUPPORT
- FLAGGER WITH CONTROL SIGN
- TYPE II BARRICADE, DRUM OR VERTICAL BARRICADE WITH STEADY BURN MONO-DIRECTIONAL LIGHT
- CONE, DRUM OR BARRICADE

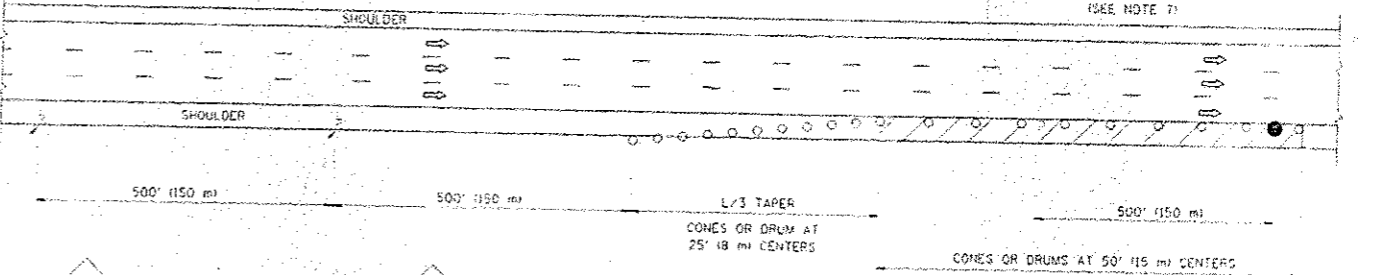
GENERAL NOTES

1. THE "L" DISTANCE EQUALS:
 SPEED LIMIT FORMULAS
 45 mph (72 km/h) METRIC ENGLISH
 OR GREATER: $L = 0.65(W)(S)$ $L = (W)(S)$
 W = WIDTH OF OFFSET IN FEET (METERS)
 S = NORMAL POSTED SPEED MPH (KM/H)
2. PLASTIC DRUMS WITH HIGH PERFORMANCE REFLECTIVE SHEETING AND STEADY BURNING LIGHTS ARE REQUIRED FOR ALL NIGHTTIME CLOSURES.
3. ALL SIGNS SHALL BE POST MOUNTED IF THE CLOSURE TIME EXCEEDS FOUR DAYS.
4. FLASHING LIGHTS SHALL BE USED DURING THE HOURS OF DARKNESS AND SHALL BE INSTALLED ABOVE THE FIRST TWO SETS OF SIGNS.

SHOULDER CLOSURE DETAILS



PERMANENT SHOULDER CLOSURE



DAYTIME SHOULDER CLOSURE

THIS DETAIL IS USED WHERE:
 1. VEHICLES, EQUIPMENT, WORKERS OR THEIR ACTIVITIES ENCRUCH IN AN AREA CLOSER THAN 15' (4.5 m) TO THE EDGE OF PAVEMENT FOR A PERIOD IN EXCESS OF 15 MINUTES.

ARRAY DESIGN PER MANUFACTURER TO BE NCHRP 350 COMPLIANT.

DETAIL "A" IMPACT ATTENUATOR, TEMPORARY (SEE NOTE 5)

ALL DIMENSIONS ARE IN INCHES (MILLIMETERS) UNLESS OTHERWISE SHOWN.

DESIGNED: [Blank]		REVISED: 04-03		STATE OF ILLINOIS DEPARTMENT OF TRANSPORTATION	TRAFFIC CONTROL DETAILS FOR FREEWAY SHOULDER CLOSURES AND PARTIAL RAMP CLOSURES	SCALE: NONE SHEET NO. 1 OF 1 SHEETS STA. TO STA.	SECTION: VAL 2013-002 PIR K1D COUNTY: [Blank] TOTAL SHEETS: 6 SHEET NO.: 6 CONTRACT NO.: 60200
DRAWN: D.W.S.		REVISED: J.A.F. 12-06					
CHECKED: [Blank]		REVISED: S.P.B. 01-07					
DATE: 11-96		REVISED: S.P.B. 12-09					
[Blank]		[Blank]					