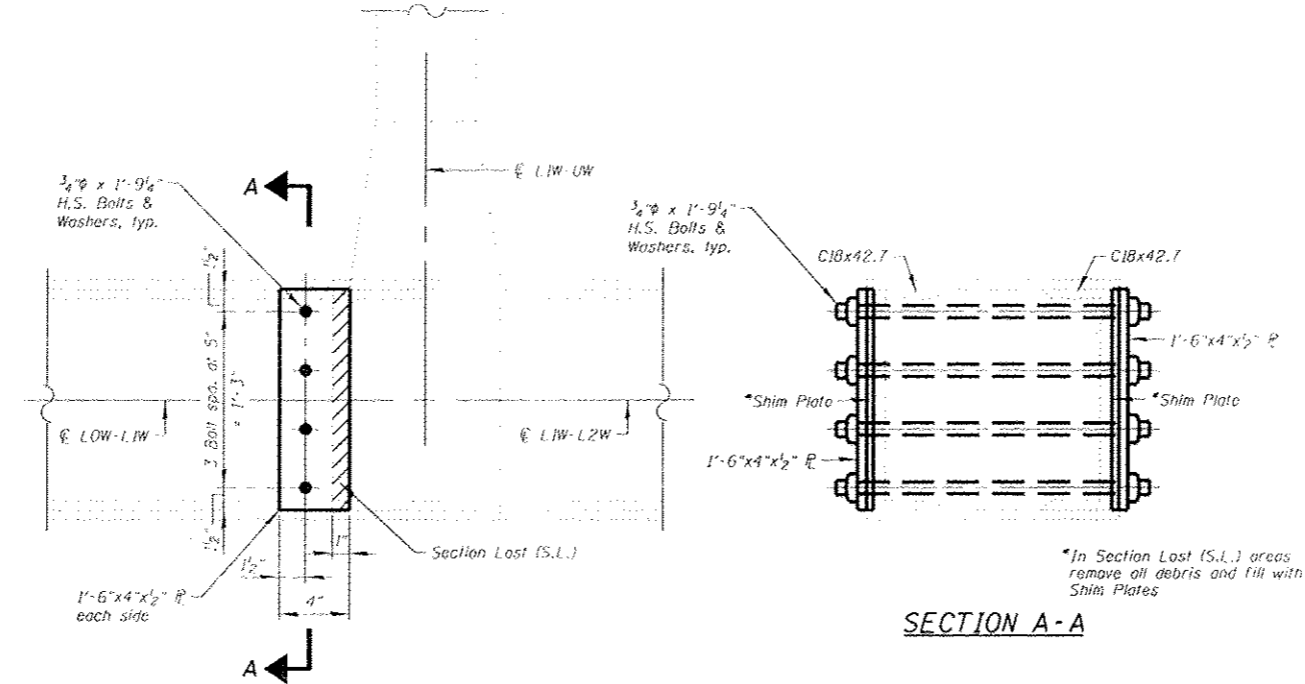
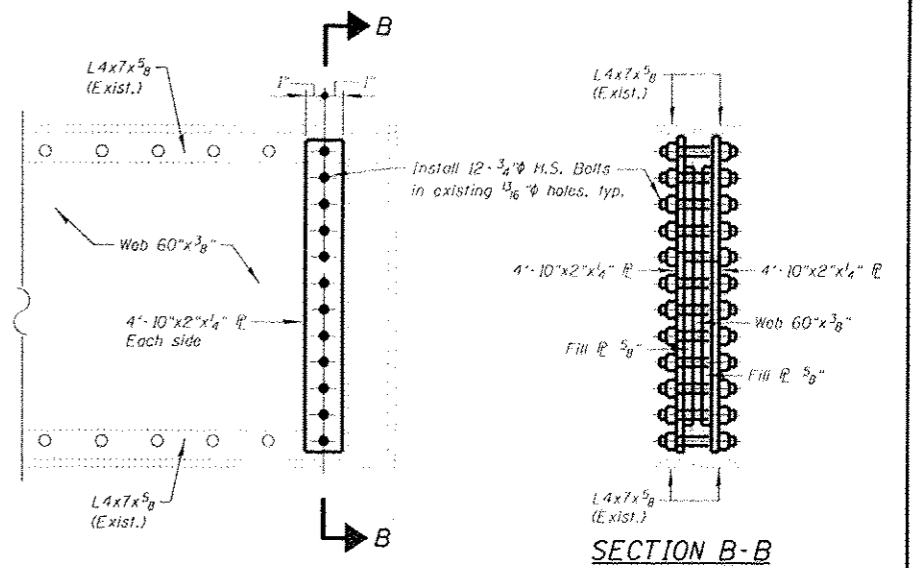


FILE NAME: I:\131023.1-55-000-001-Steel-Repairs-VI.dwg

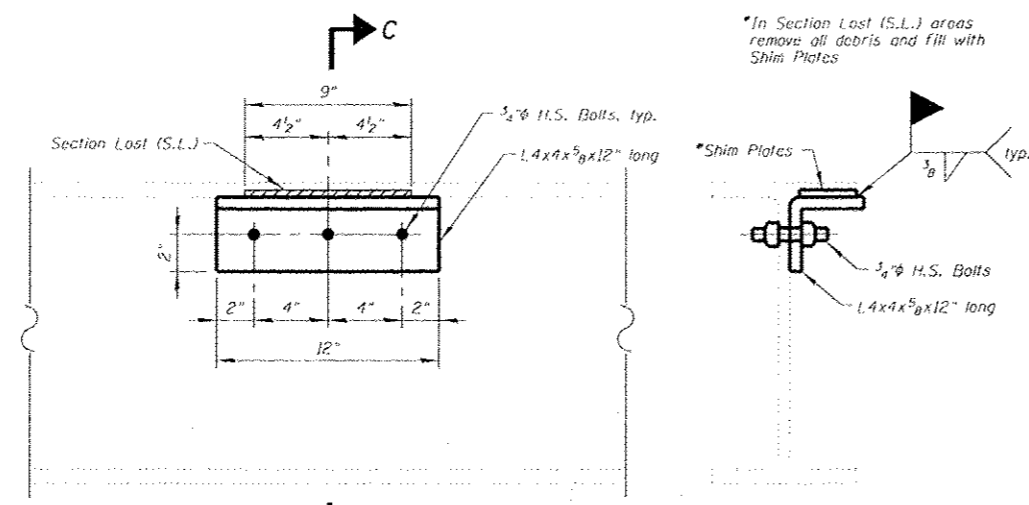


**REPAIR NO. S54**  
**REPAIR DETAIL ①**  
**ELEVATION**

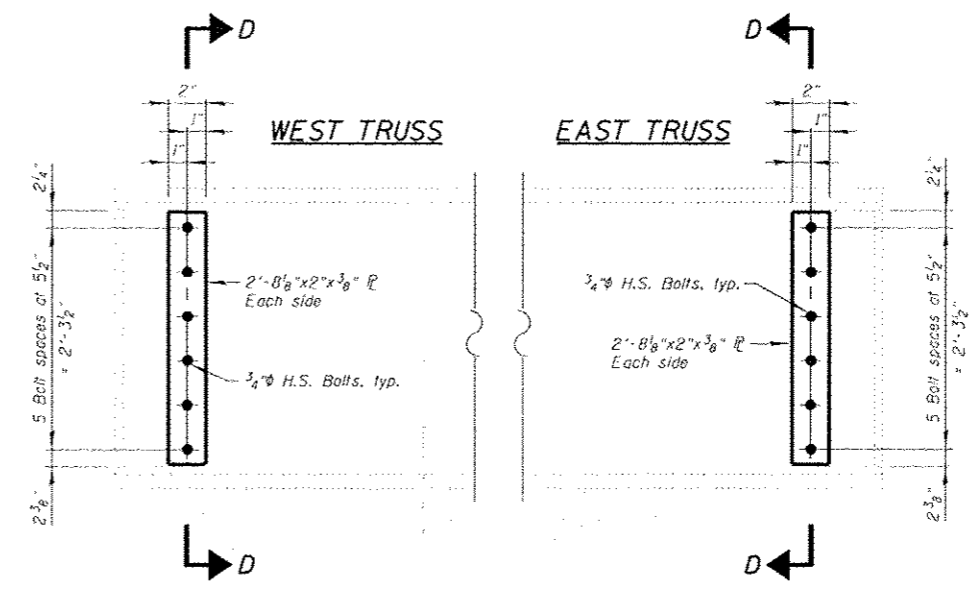


**REPAIR NO. S51**  
**REPAIR DETAIL ②**  
**ELEVATION**

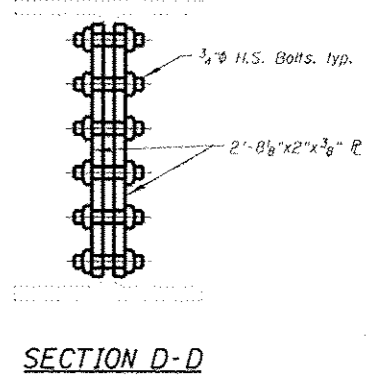
Note "A"  
 Angles & cross frames shall be removed prior to performing the repairs and reinstalled after the repair work is completed



**REPAIR NO. S53**  
**REPAIR DETAIL ③**  
**ELEVATION**



**REPAIR NO. S56**  
**REPAIR DETAIL ④**  
**ELEVATION**



	USER NAME: prazwosniks PLOT SCALE: 1/8" = 1'-0" PLOT DATE: 3/21/2013	DESIGNED: J.C.N./B.N.S./J.W. CHECKED: B.N.S./J.W. DRAWN: F.M. DATE: MARCH 20, 2013	REVISED: - REVISED: - REVISED: - REVISED: -	STATE OF ILLINOIS DEPARTMENT OF TRANSPORTATION	STRUCTURAL STEEL REPAIRS-VI STRUCTURE NO. 099-0008 SHEET NO. 550 OF 560 SHEETS	F.A.I. RTE. 55 SECTION 87B, D-BR-1 COUNTY WILL TOTAL SHEETS 106 SHEET NO. 550 CONTRACT NO. 60R62 ILLINOIS FED. AID PROJECT
--	--	---	--	---	--	--