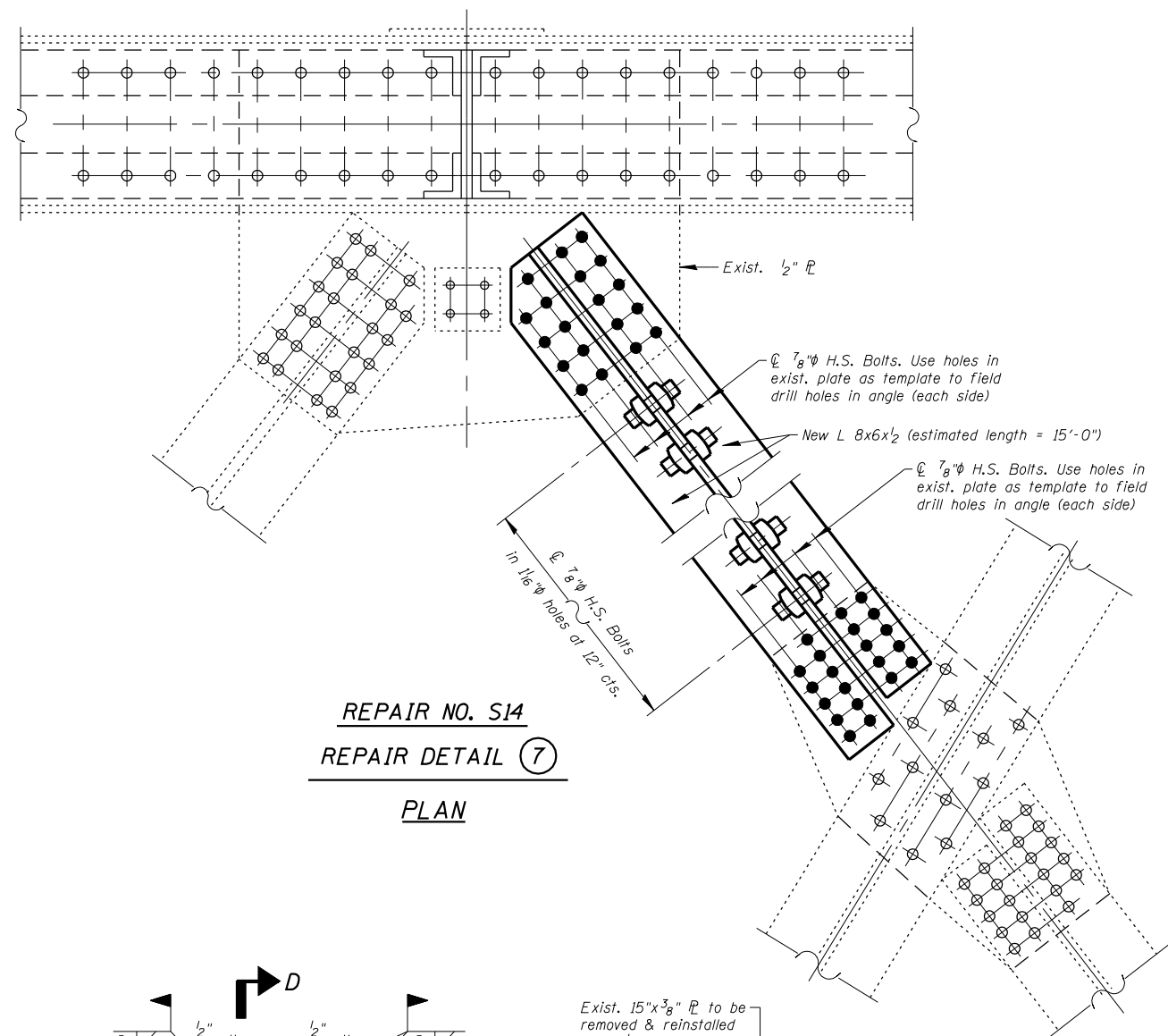


REPAIR NO'S. S12 & S13

REPAIR DETAIL ⑥

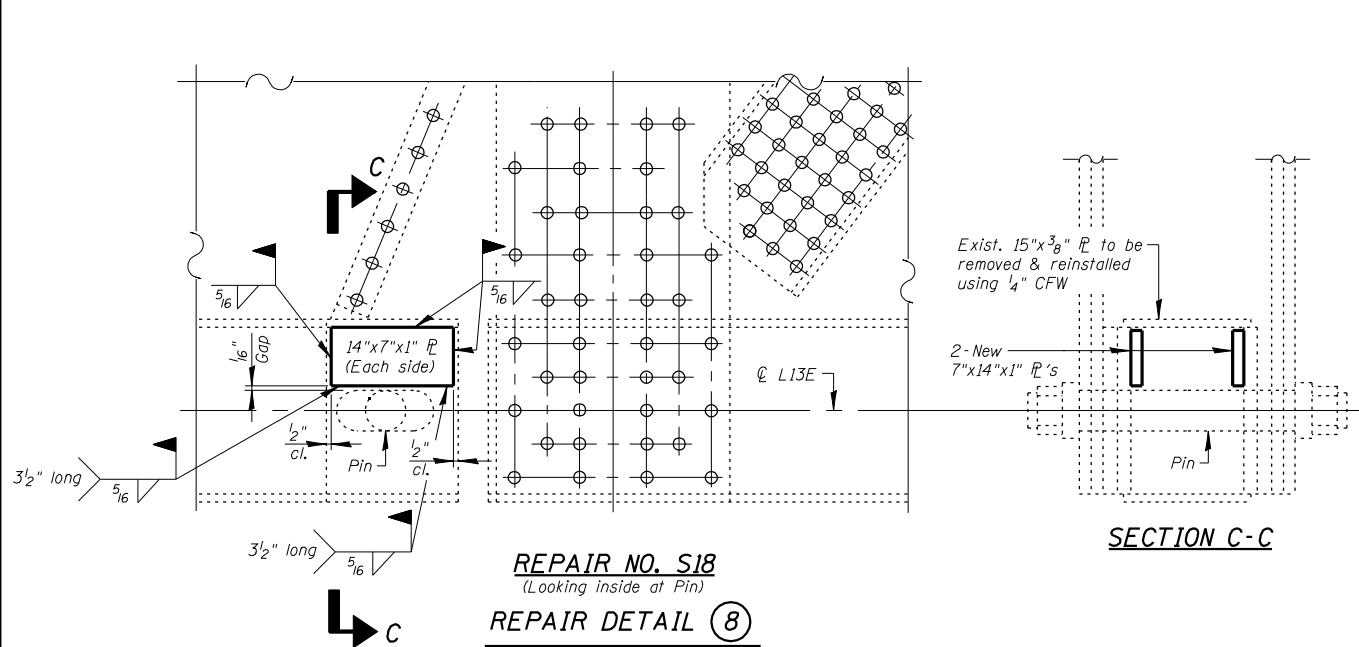
ELEVATION



REPAIR NO. S14

REPAIR DETAIL ⑦

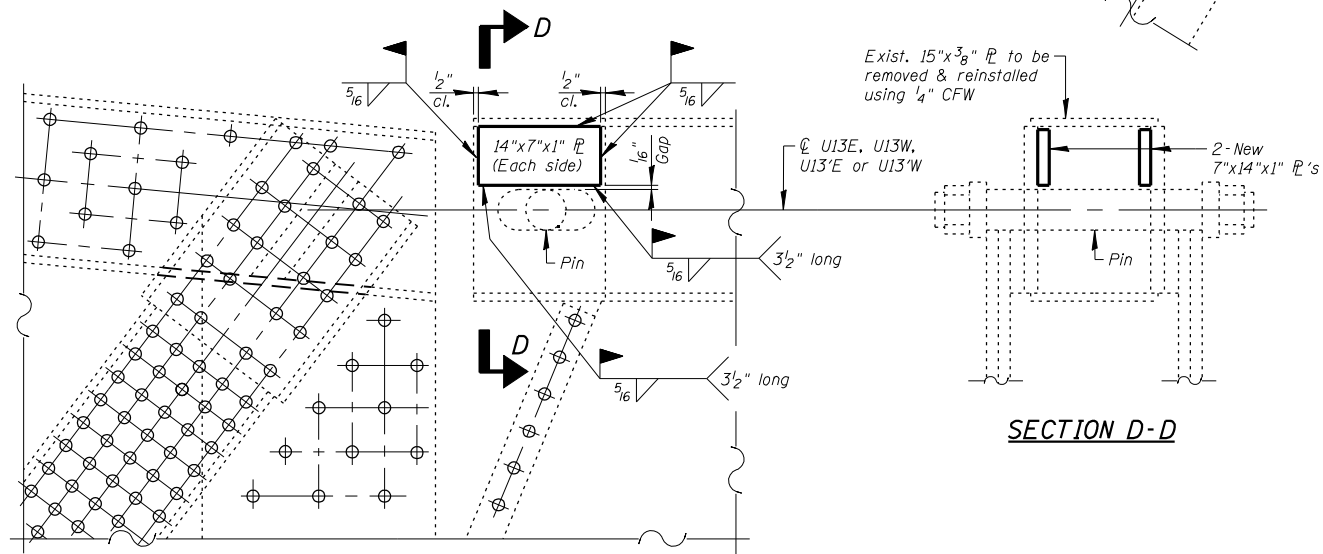
PLAN



REPAIR NO. S18
(Looking inside at Pin)

REPAIR DETAIL ⑧

ELEVATION



REPAIR NO'S. S19, S22,
S31, S32, N10 & N30
(Looking inside at Pin)

REPAIR DETAIL ⑨

ELEVATION

Note:
See Sht. S49 for Bill of Material & General Notes

FILE NAME = :I:\103103.1-55 over des planes\structural\cead sheets\1606R2-45-st-steel-repairs-I.dgn



USER NAME = IDOT	DESIGNED - J.C.N./B.N.S./J.W.	REVISED -
PLOT SCALE = 100.0000' / IN.	CHECKED - B.N.S./J.W.	REVISED -
PLOT DATE = 1/18/2013	DRAWN - F.M.	REVISED -
	DATE - JANUARY 16, 2013	REVISED -

STATE OF ILLINOIS
DEPARTMENT OF TRANSPORTATION

STRUCTURAL STEEL REPAIRS-II
STRUCTURE NO'S. 099-0008 & 099-0009

SHEET NO. S46 OF S60 SHEETS

F.A.I. RTE.	SECTION	COUNTY	TOTAL SHEETS	SHEET NO.
55	87B, D-BR-I	WILL	106	84
CONTRACT NO. 60R62				

ILLINOIS FED. AID PROJECT