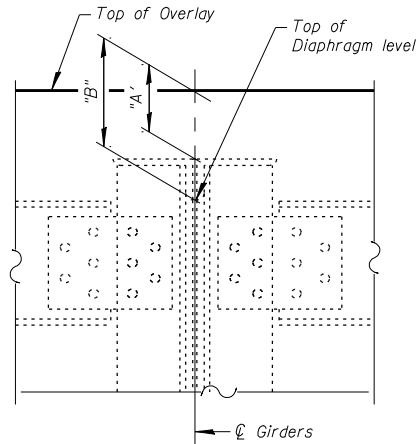


APPROACH SIDE

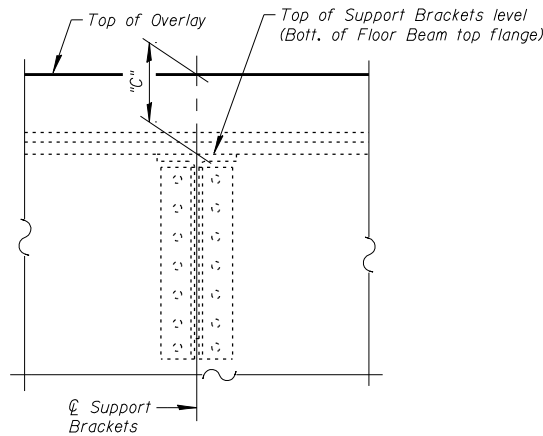
Girder	Dim. "A" at Bearing	Dim. "B" at Bearing
1	8 1/2"	10 1/2"
2	8 7/16"	11 1/16"
3	8 13/16"	1'-0 15/16"
℄ Roadway	-	1'-1 9/16"

TRUSS SIDE

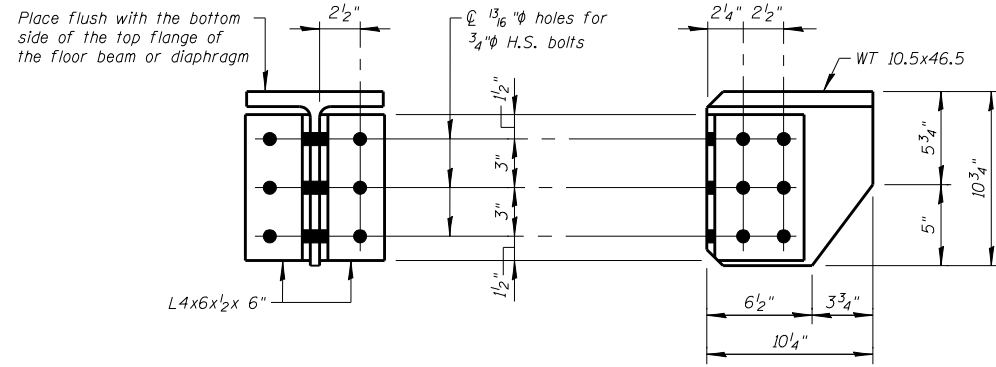
Support	Dim. "C" at Support
A	9 3/16"
B	9 7/16"
C	9 7/8"
D	10 5/16"
E	10 1/16"
F	11 1/16"
G	11 1/2"
H	11 5/16"
℄ Roadway	12 1/8"



TYPICAL
(At South side of joint)



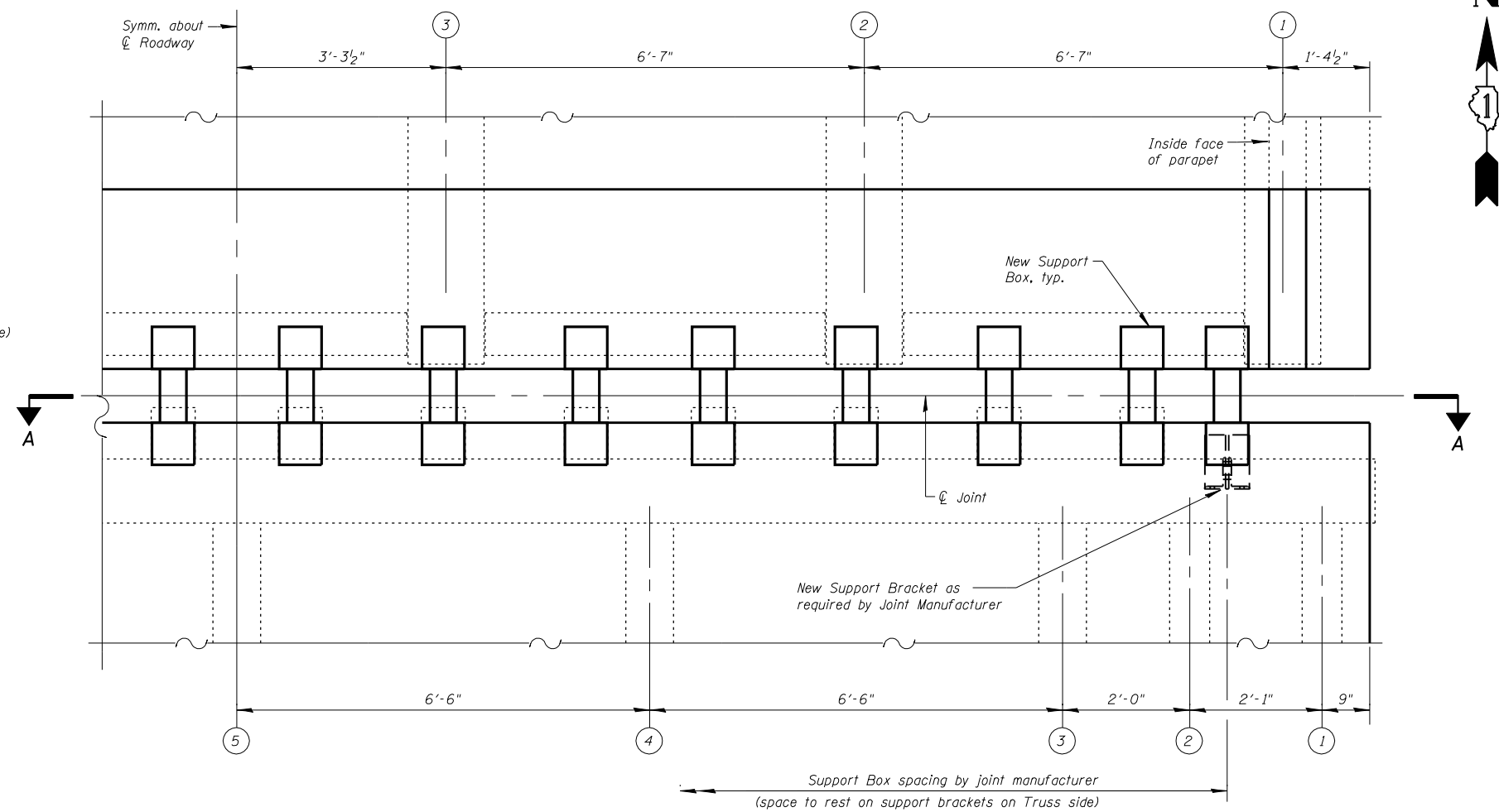
TYPICAL
(At South side of joint)



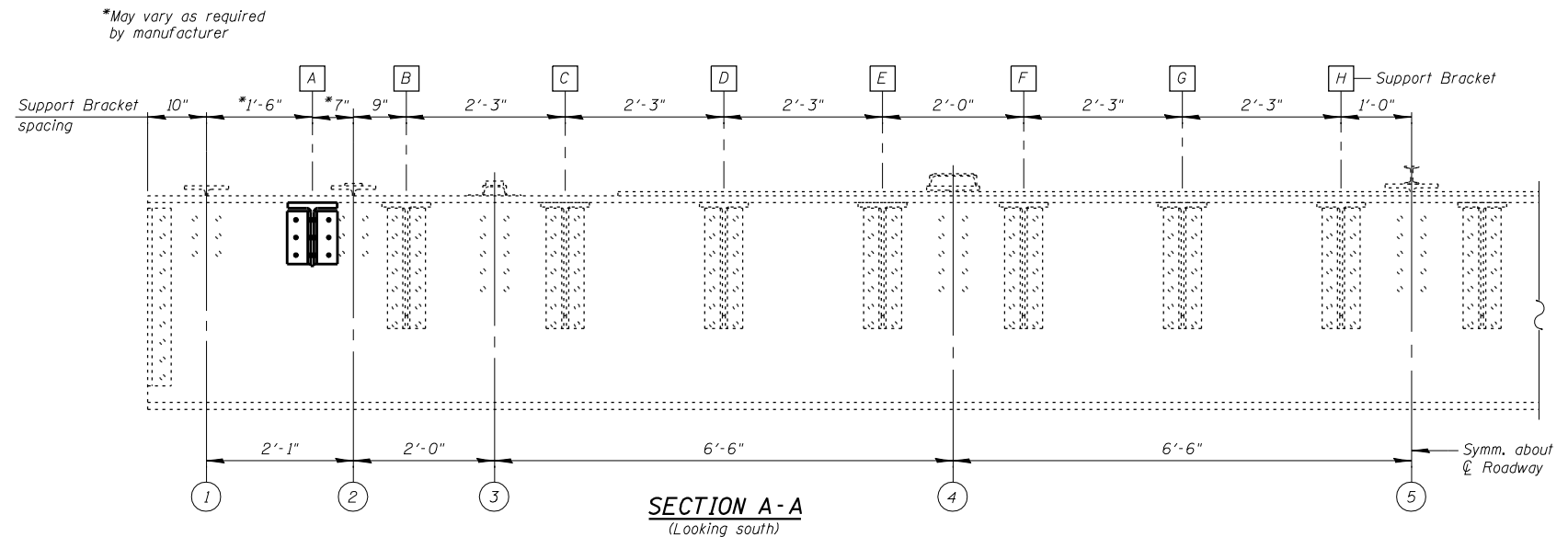
NEW SUPPORT BRACKET DETAILS
(Cost included with Modular Expansion Joint 6")

Notes:

Modular Expansion Joint shall be designed according to the latest ASTM Specifications for HS20 Loading with 30% Impact and for minimum movement of ±3" (Total of 6"). See Special Provisions for Modular Expansion Joint.
 Joint shall be fabricated and installed according to the manufacturer's recommendations and as approved by the Engineer. Support brackets may be added as required by Modular Expansion Joint Fabricator. See New Support Bracket Details. Cost included with Modular Expansion Joint.
 Joint shall be fabricated to conform to the existing cross slopes. See Sht's. S3 & S4 for details. Match existing conditions.
 Cost of all hardware and installation of steel bearing shim plates and additional reinforcement required to anchor the joint to the slab shall be included with "Modular Expansion Joint".
 The Inorganic zinc rich primer / acrylic / acrylic paint system shall be used for shop and field painting of new structural steel except no top coat required in non-exposed areas. The color of the acrylic finish coat shall be Gray, Munsell No. 5B 7/1. See Special Provision for "Cleaning and Painting New Metal Structures".
 Modular Expansion Joints shall be assembled in their final relative position with the ends in place for shop inspection and acceptance.



PARTIAL PLAN AT PIERS 3 & 6



SECTION A-A
(Looking south)

BILL OF MATERIAL

DESCRIPTION	UNIT	TOTAL
Modular Expansion Joint 6"	Foot	36

FILE NAME = I:\103103.1-55 over des planes\structure\cadd sheets\160R62-30-modular_exp-1t-NB-Pier-.3.dgn



USER NAME = IDOT
 PLOT SCALE = 100.0000' / IN.
 PLOT DATE = 1/18/2013

DESIGNED - J.C.N./B.N.S./J.W.
 CHECKED - B.N.S./J.W.
 DRAWN - F.M.
 DATE - JANUARY 16, 2013

REVISED -
 REVISED -
 REVISED -
 REVISED -

STATE OF ILLINOIS
DEPARTMENT OF TRANSPORTATION

MODULAR EXPANSION JOINT DETAILS AT PIERS 3 & 6-NORTHBOUND
STRUCTURE NO. 099-0009

SHEET NO. S30 OF S60 SHEETS

F.A.I. RTE. 55
 SECTION 87B, D-BR-I
 COUNTY WILL
 TOTAL SHEETS 106
 SHEET NO. 69
 CONTRACT NO. 60R62
 ILLINOIS FED. AID PROJECT