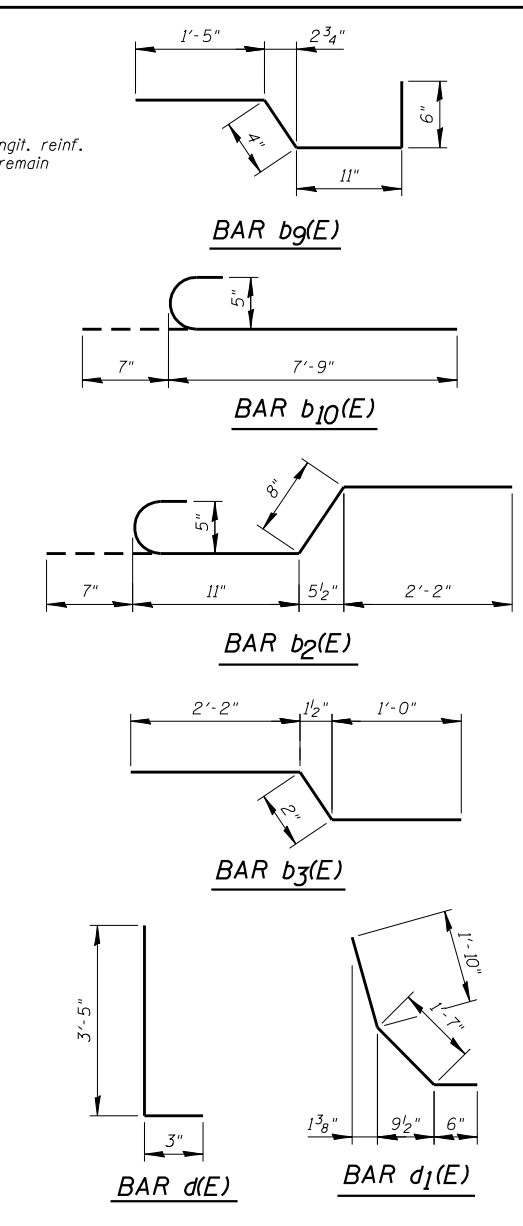
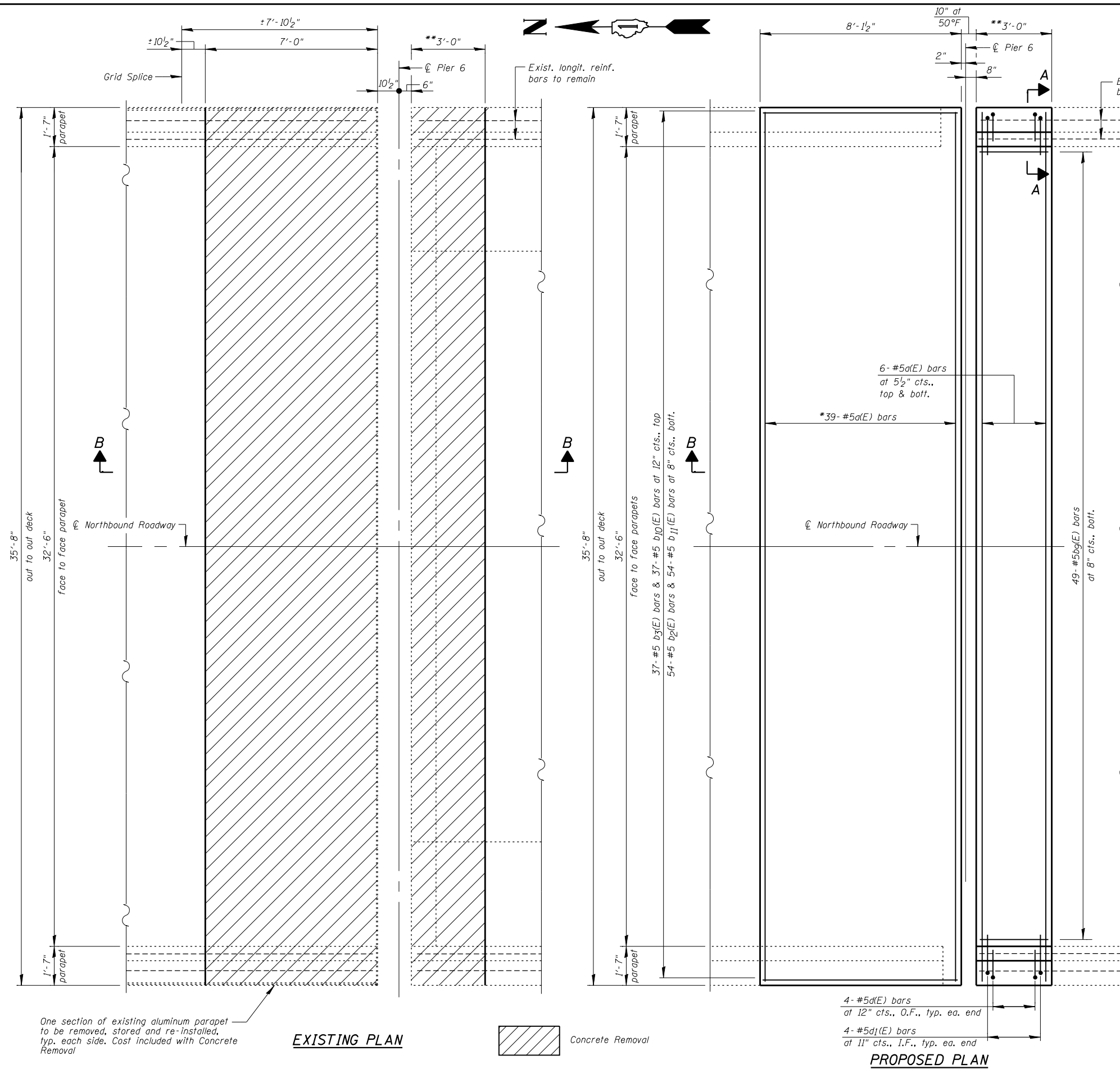


FILE NAME = :1\103103.1+55 over des planes\structural\cead sheets\160R62-2B-jt-reconst-NB_pier-6-1.dgn

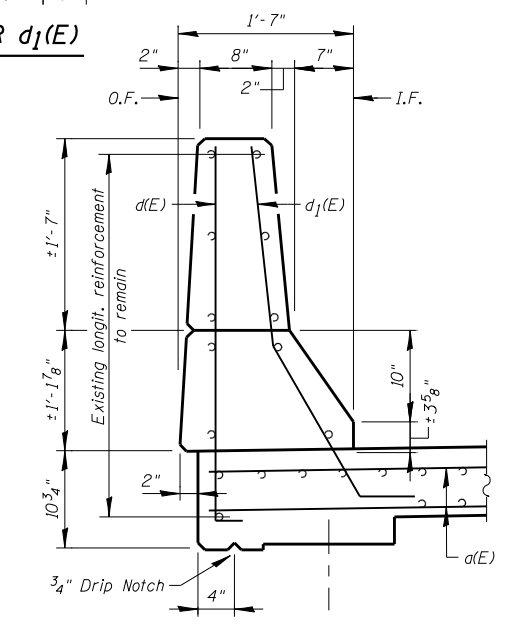


BILL OF MATERIAL

Bar	No.	Size	Length	Shape
a(E)	51	#5	15'-10"	—
b2(E)	54	#5	4'-4"	⌒
b3(E)	37	#5	3'-4"	⌒
bg(E)	49	#5	3'-4"	⌒
b10(E)	37	#5	8'-4"	⌒
b11(E)	54	#5	8'-7"	—
d(E)	8	#5	3'-8"	L
d1(E)	8	#5	3'-11"	⌒
Reinforcement Bars, Epoxy Coated		Pound	2,250	
Concrete Removal		Cu Yd	12.4	
Concrete Superstructure		Cu Yd	12.4	

Note:
See Sht. S29 for Section B-B

LEGEND:
O.F. = Outside Face
I.F. = Inside Face



*18 a(E) bars at 5 1/2" cts., top,
18 a(E) bars at 5 1/2" cts., bott., &
3 a(E) bars in haunch as shown in Section B-B

**Length of block out, width of joint and number of reinforcement bars may vary as required by Joint Manufacturer

One section of existing aluminum parapet to be removed, stored and re-installed, typ. each side. Cost included with Concrete Removal

EXISTING PLAN

Concrete Removal

4- #5d(E) bars at 12" cts., O.F., typ. ea. end
4- #5d1(E) bars at 11" cts., I.F., typ. ea. end

PROPOSED PLAN



USER NAME = IDOT	DESIGNED - J.C.N./B.N.S./J.W.	REVISED -
PLOT SCALE = 100.0000' / IN.	CHECKED - B.N.S./J.W.	REVISED -
PLOT DATE = 1/18/2013	DRAWN - F.M.	REVISED -
	DATE - JANUARY 16, 2013	REVISED -

**STATE OF ILLINOIS
DEPARTMENT OF TRANSPORTATION**

**EXPANSION JOINT RECONSTRUCTION AT PIER 6-NORTHBOUND-I
STRUCTURE NO. 099-0009**

SHEET NO. S28 OF S60 SHEETS

F.A.I. RTE. 55	SECTION 87B, D-BR-I	COUNTY WILL	TOTAL SHEETS 106	SHEET NO. 67
CONTRACT NO. 60R62				
ILLINOIS FED. AID PROJECT				