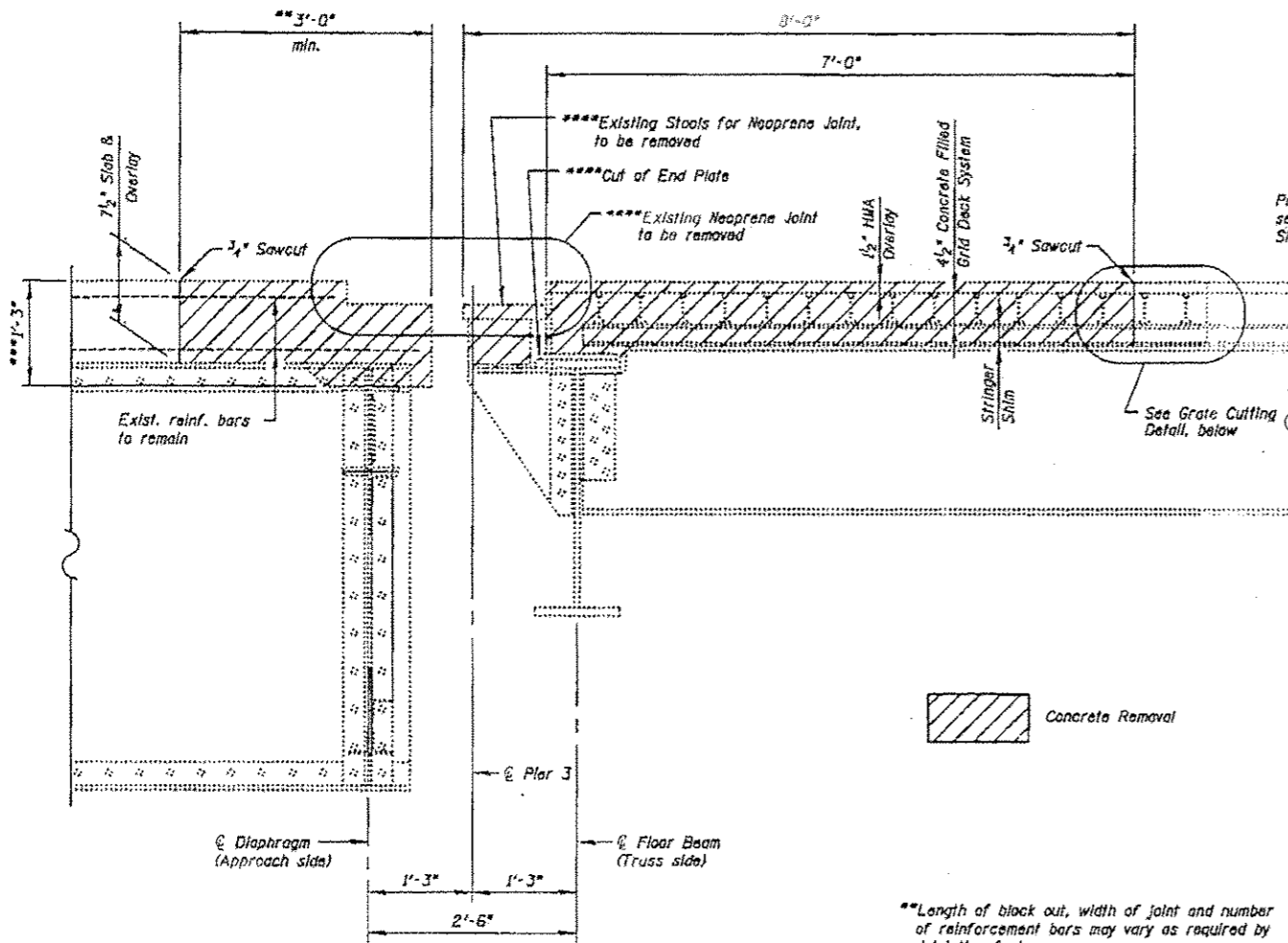
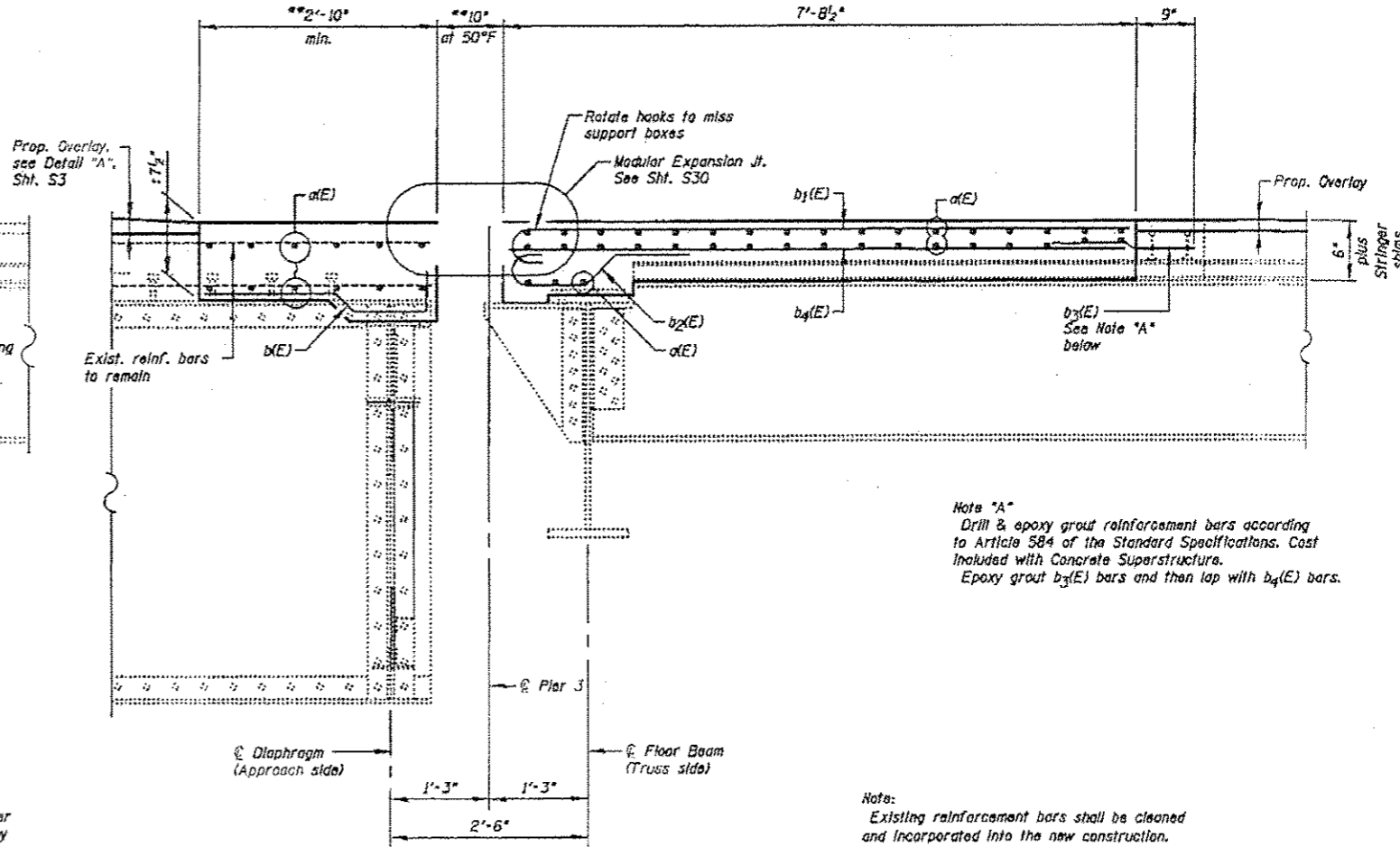


FILE NAME = I:\183103\1-85 over Des Plaines\Structural\CADD Sheets\DRB62-25-j-reconst-NB-des-3-11.dgn



**EXISTING**  
**SECTION B-B**  
(showing removal)

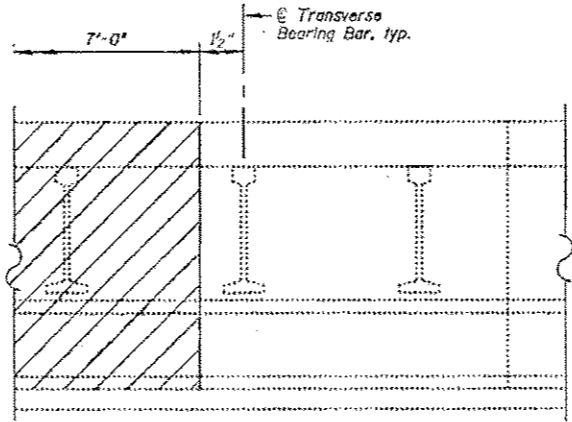
\*\*\*Length of block out, width of joint and number of reinforcement bars may vary as required by Joint Manufacturer.  
\*\*\*Verify dimension in field, dimension may vary.  
\*\*\*\*Cost Included with Concrete Removal.



**PROPOSED**  
**SECTION B-B**

Note "A"  
Drill & epoxy grout reinforcement bars according to Article 584 of the Standard Specifications. Cost Included with Concrete Superstructure.  
Epoxy grout b3(E) bars and then lap with b4(E) bars.

Notes:  
Existing reinforcement bars shall be cleaned and incorporated into the new construction. Cost Included with Concrete Removal



**GRATE CUTTING DETAIL**

<p><b>CHRISTIAN-ROGE &amp; ASSOCIATES, INC.</b></p>	USER NAME = 100T	DESIGNED - J.C.N./B.N.S./J.W.	REVISED -	<b>STATE OF ILLINOIS</b> <b>DEPARTMENT OF TRANSPORTATION</b>	<b>EXPANSION JOINT RECONSTRUCTION AT PIER 3-NORTHBOUND-II</b> <b>STRUCTURE NO. 099-0009</b>	F.A.I. RTE. 55	SECTION 876, D-BR-1	COUNTY WILL	TOTAL SHEETS 106	SHEET NO. 64
	PLOT SCALE = 5/8" = 1' IN.	CHECKED - B.N.S./J.W.	REVISED -			CONTRACT NO. 60R62				
	PLOT DATE = 3/19/2013	DRAWN - F.M.	REVISED -			SHEET NO. 525 OF 560 SHEETS				
	DATE - MARCH 20, 2013	DATE -	REVISED -			ILLINOIS FED. AID PROJECT				