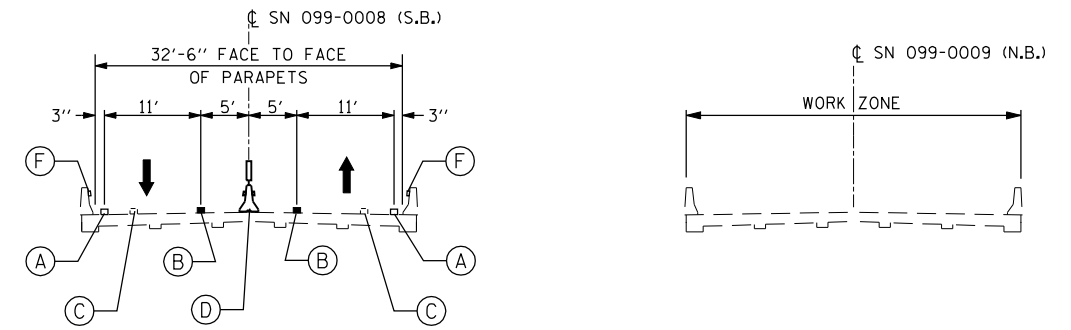
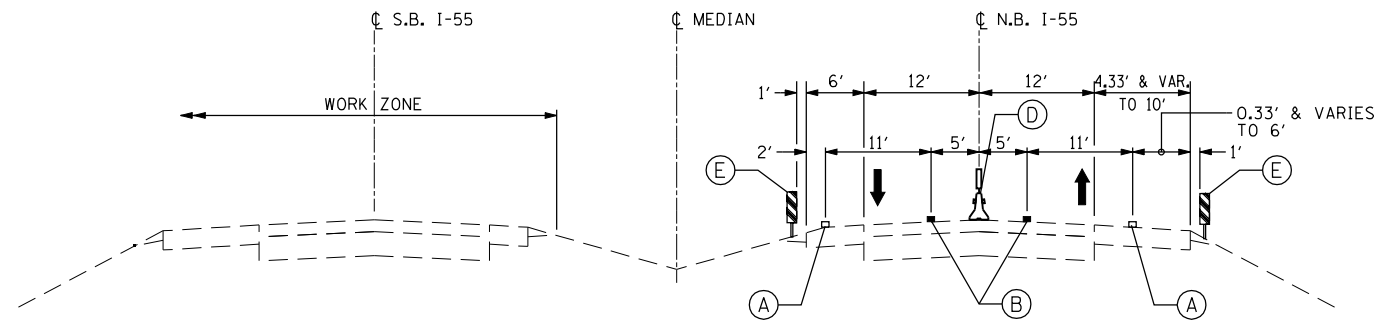


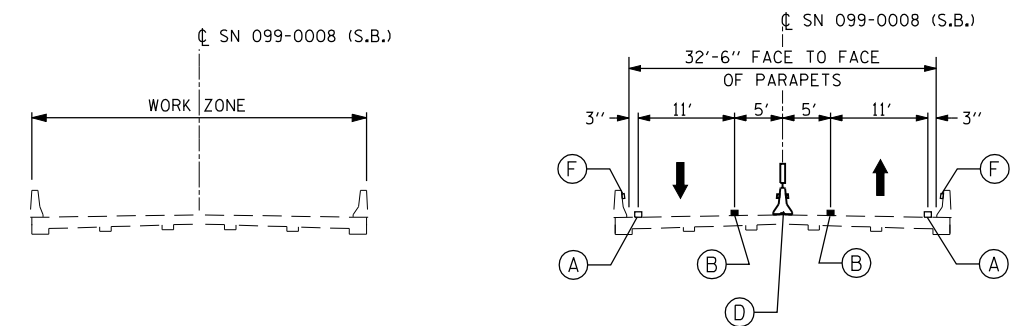
**STAGE I TYPICAL SECTION**  
 STA. 1099+50 TO STA. 1123+14  
 STA. 1262+02 TO STA. 1257+64



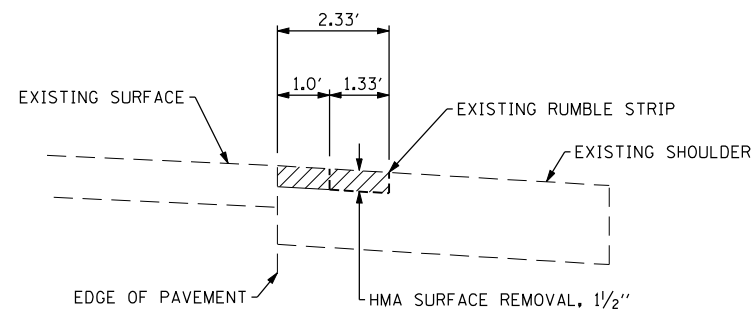
**STAGE I (LOOKING NORTH)**  
 STA. 1123+14 TO STA. EQ. 1123+33.64/1275+88.93  
 TO STA. 1262+02



**STAGE II TYPICAL SECTION**  
 STA. 1099+50 TO STA. EQ. 1123+33.64/1275+88.93  
 TO STA. 1275+58 &  
 STA. 1262+62 TO STA. 1259+00



**STAGE II (LOOKING NORTH)**  
 STA. 1275+58 TO STA. 1262+62



**RUMBLE STRIP DETAIL**

**LEGEND**

- (A) 4" WHITE WET REFLECTIVE TEMPORARY TAPE, TYPE III
- (B) 4" YELLOW WET REFLECTIVE TEMPORARY TAPE, TYPE III
- (C) EXIST. PAVEMENT MARKING TO BE REMOVED
- (D) TEMPORARY CONCRETE BARRIER WITH MODULAR GLARE SCREEN SYSTEM & TYPE "C" YELLOW REFLECTIVE MARKERS @ 25' c-c.
- (E) VERTICAL PANELS @ 50' c-c.
- (F) BARRIER WALL MARKERS, TYPE 'C', CRYSTAL