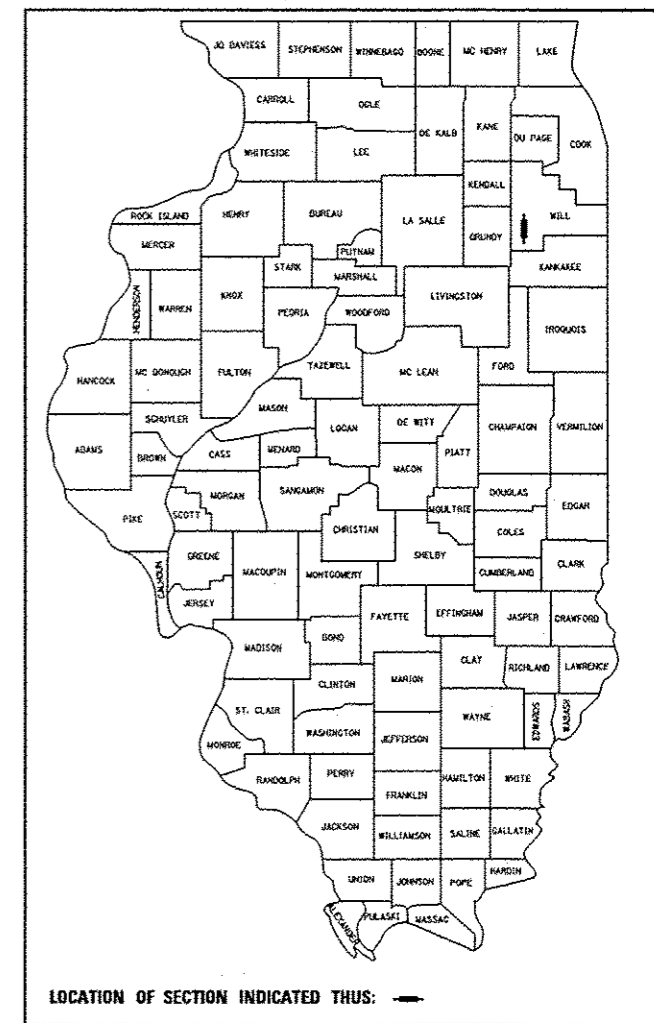


F.A.I. RTE.	SECTION	COUNTY	TOTAL SHEETS	SHEET NO.
55	87B, D-BR-1	WILL	106*	1
FED. ROAD DIST. NO. 1		ILLINOIS	CONTRACT NO. 60R62	

D-91-195-12

* INCLUDES SHEETS 82A, 87A & 87B
(TOTAL SHT COUNT 106 + 3 = 109)



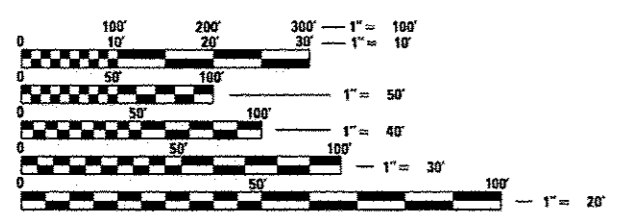
STATE OF ILLINOIS
DEPARTMENT OF TRANSPORTATION
DIVISION OF HIGHWAYS
**PROPOSED
HIGHWAY PLANS**

F.A.I. ROUTE I-55 OVER DES PLAINES RIVER
SECTION: 87B, D-BR-1

BRIDGE REPAIR, BRIDGE DECK OVERLAY & BRIDGE JOINT REPAIR
COUNTY: WILL
C-91-195-12

FOR INDEX OF SHEETS, SEE SHEET NO. 2
INTERSTATE 55 :
FUNCTIONAL CLASSIFICATION: INTERSTATE
2012 ADT = 53,800
DESIGN SPEED : 70 M.P.H.
POSTED SPEED : 65 M.P.H.

THIS PROJECT IS LOCATED IN THE
VILLAGE OF CHANNAHON

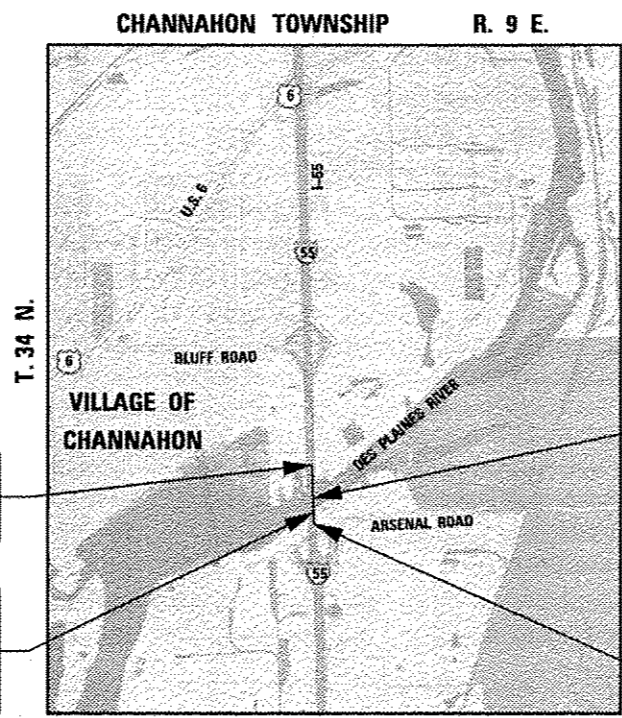


FULL SIZE PLANS HAVE BEEN PREPARED USING STANDARD
ENGINEERING SCALES. REDUCED SIZED PLANS WILL NOT
CONFORM TO STANDARD SCALES. IN MAKING MEASUREMENTS
ON REDUCED PLANS, THE ABOVE SCALES MAY BE USED.

J.U.L.I.E.
JOINT UTILITY LOCATING INFORMATION FOR EXCAVATORS
1-800-892-0123
OR 811

DISTRICT ONE - DESIGN
PROJECT MANAGER : ISSAM RAYYAN (847) 705-4178
PROJECT ENGINEER : ROBERT BORO (847) 705-4237

CONTRACT NO. 60R62



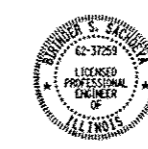
PROJECT ENDS
STA. 1260 + 42

STATION EQUATION
STA. 1275 + 88.93 AHEAD =
STA. 1123 + 33.64 BACK

F.A.I. ROUTE 55
BRIDGE
SN 099-0008 (SB)
SN 099-0009 (NB)

PROJECT BEGINS
STA. 1121 + 95

GROSS LENGTH OF PROJECT = 1,685.57 FEET = 0.319 MILES
NET LENGTH OF PROJECT = 1,685.57 FEET = 0.319 MILES



Birinder S. Sachdeva 1-17-13
BIRINDER S. SACHDEVA, P.E.
EXPIRES: 11-30-2013

STATE OF ILLINOIS
DEPARTMENT OF TRANSPORTATION
DIVISION OF HIGHWAYS
SUBMITTED January 29, 2013
John Furman
DEPUTY DIRECTOR OF HIGHWAYS, REGION ENGINEER
March 22, 2013
John D. Baranzelli, P.E.
acting ENGINEER OF DESIGN AND ENVIRONMENT
March 22, 2013
Omer Osman, P.E.
DIRECTOR OF HIGHWAYS, CHIEF ENGINEER

PRINTED BY THE AUTHORITY
OF THE STATE OF ILLINOIS

CR & A
CHRISTIAN-ROGE & ASSOCIATES, INC.
ENGINEERS - PLANNERS - SURVEYORS
211 W. WACKER DRIVE CHICAGO, IL. 60606
TELEPHONE: 312-372-2023