

F.A.P. RTE.	SECTION	COUNTY	TOTAL SHEETS	SHEET NO.
332	10A-RS-2	WILL	28	1
ILLINOIS CONTRACT NO. 60N63				

STATE OF ILLINOIS
DEPARTMENT OF TRANSPORTATION
DIVISION OF HIGHWAYS

**PROPOSED
HIGHWAY PLANS**

FAP 332 IL 394
SECTION 10A-RS-2
STEGER ROAD TO S. OF ELMSCOURT LANE
RESURFACING AND SHOULDER RUMBLE STRIPS

WILL COUNTY
C-91-333-11

D-91-333-11



LOCATION OF SECTION INDICATED THIS: -

PROFESSIONAL ENGINEER'S SIGN & SEAL
Peter M. Johnston
EXPIRES: 11-30-13

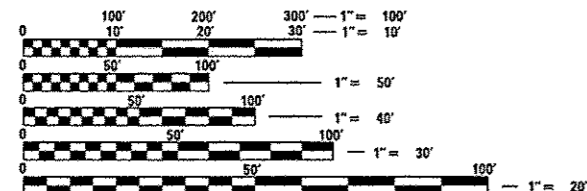
STATE OF ILLINOIS
DEPARTMENT OF TRANSPORTATION
DIVISION OF HIGHWAYS
SUBMITTED October 15 2012
John Fortin
DEPUTY DIRECTOR OF HIGHWAYS, REGION ENGINEER
March 22 2013
John D. Baranzelli, P.E.
ENGINEER OF DESIGN AND ENVIRONMENT
March 22 2013
Chris Osman, P.E.
DIRECTOR OF HIGHWAYS, CHIEF ENGINEER

FOR INDEX OF SHEETS, SEE SHEET NO. 2

TRAFFIC DATA

EXISTING ADT = 8,900-27,200
SPEED LIMIT = 55 MPH

THE PROJECT IS LOCATED IN THE
VILLAGES OF CRETE, STEGER AND
SAUK VILLAGE

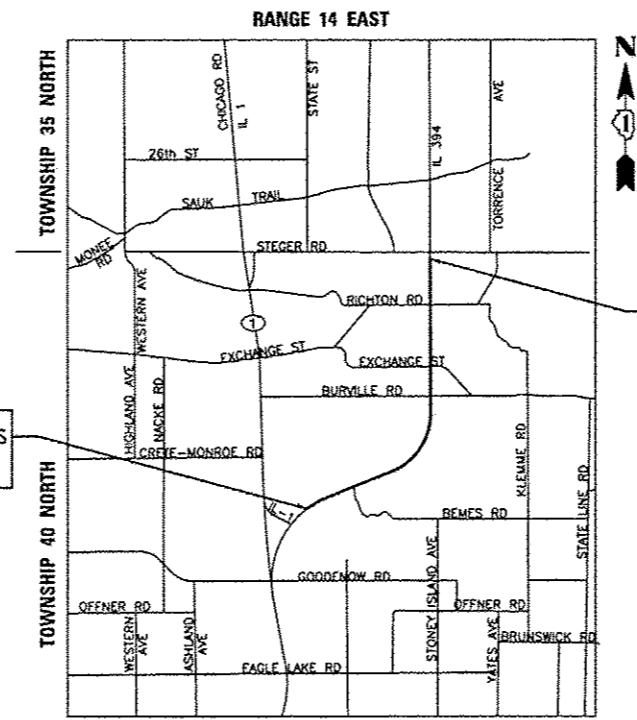


FULL SIZE PLANS HAVE BEEN PREPARED USING STANDARD ENGINEERING SCALES. REDUCED SIZED PLANS WILL NOT CONFORM TO STANDARD SCALES. IN MAKING MEASUREMENTS ON REDUCED PLANS, THE ABOVE SCALES MAY BE USED.

J.U.L.I.E.
JOINT UTILITY LOCATION INFORMATION FOR EXCAVATION
1-800-892-0123
OR 811

PROJECT ENGINEER: PETER JOHNSTON (GRAEF) 773-399-0112
PROJECT MANAGER: KEN ENG (IDOT) 847-705-4247

CONTRACT NO. 60N63



PROJECT BEGINS
STA. 2022+20

PROJECT ENDS
STATION 2336+25

GROSS AND NET LENGTH OF PROJECT: 31,364 FT (5.94 MILES)

GRAEF 8501 W. Higgins Road; Suite 280
Chicago, Illinois 60631
(773) 399-0112

PRINTED BY THE AUTHORITY
OF THE STATE OF ILLINOIS