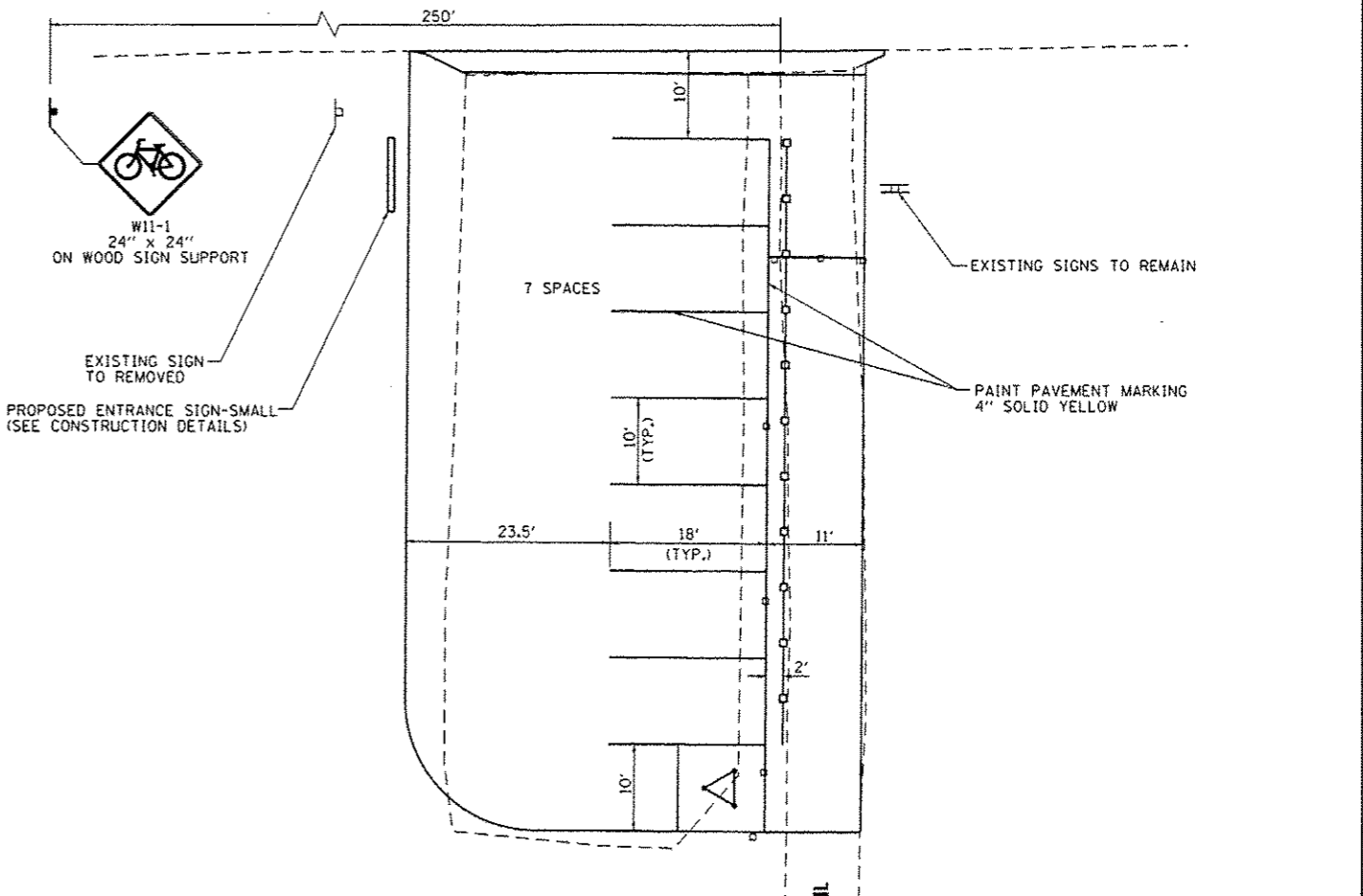
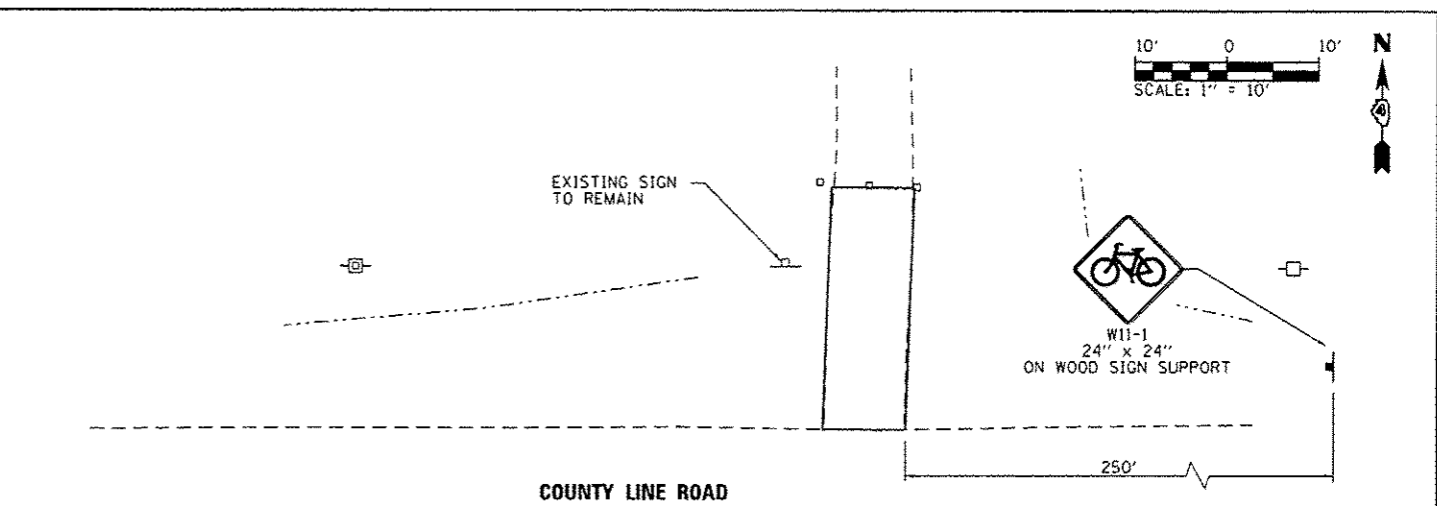


KIOSK DETAIL

SEE KIOSK DETAIL

LEGEND
 671.00 → PROPOSED ELEVATION
 670.50 → EXISTING ELEVATION

COORDINATE LISTING			
POINT NO.	NORTHING	EASTING	DESCRIPTION
①	1568930.839	2413037.033	EOP
②	1568928.433	2413043.177	EOP
③	1568928.150	2413089.518	EOP (TRAIL)
④	1568839.202	2413088.972	EOP (TRAIL)
⑤	1568840.702	2413088.986	EOP
⑥	1568855.971	2413036.577	EOP
⑦	1568845.761	2413073.356	KIOSK



NOTES:
 1. ALL DIMENSIONS ARE TO CENTER OF PAVEMENT MARKING LINE.
 2. FINAL LOCATION OF ENTRANCE SIGN SHALL BE AS DIRECTED BY THE ENGINEER.

FILE NAME = L:\IDOT\1186618\W0_8\Draw\CA00_Sheets\G	USER NAME = Kristin Simmons	DESIGNED - KLT	REVISED -
	d:\Stkg\PM_Sign\CountyLine.dgn	DRAWN - GLD	REVISED -
	PLOT SCALE = 20.0000 / 1"	CHECKED - SPH	REVISED -
	PLOT DATE = 2/5/2013	DATE - 2/11/2013	REVISED -

**STATE OF ILLINOIS
 DEPARTMENT OF TRANSPORTATION**

**GRADING AND STAKING / PAVEMENT MARKING AND SIGNING PLAN
 COUNTY LINE ROAD
 ROCK ISLAND TRAIL STATE PARK**

F.A. RTE.	SECTION	COUNTY	TOTAL SHEETS	SHEET NO.
	PARK ROADS	PEORIA/STARV	37	23
CONTRACT NO. 46256			ILLINOIS FED. AID PROJECT	