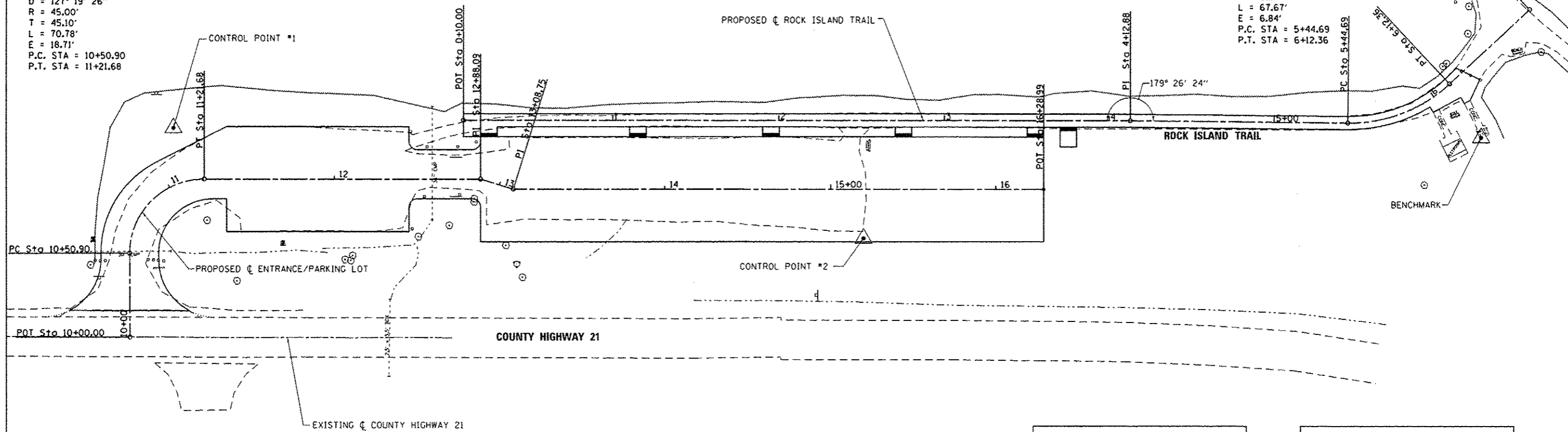


PROPOSED TRAIL CURVE DATA
 PI STA. = 5+80.25
 Δ = 43° 33' 52" (LT)
 D = 64° 22' 38"
 R = 89.00'
 T = 35.57'
 L = 67.67'
 E = 6.84'
 P.C. STA. = 5+44.69
 P.T. STA. = 6+12.36

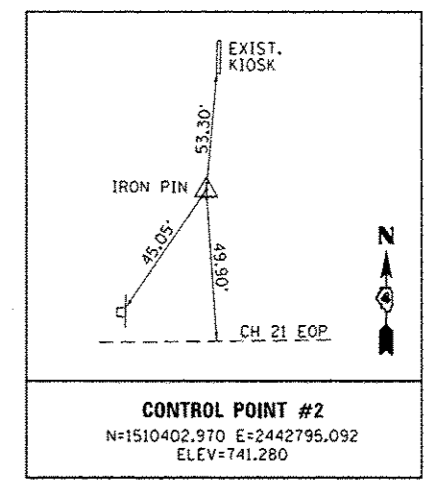
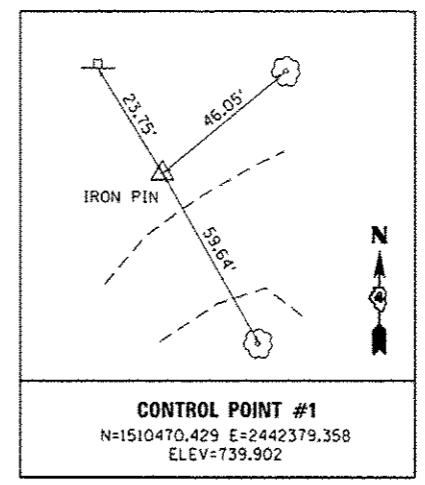
PROPOSED CURVE DATA
 PI STA. = 10+95.99
 Δ = 90° 07' 23" (RT)
 D = 127° 19' 26"
 R = 45.00'
 T = 45.10'
 L = 70.78'
 E = 18.71'
 P.C. STA. = 10+50.90
 P.T. STA. = 11+21.68



ALIGNMENT COORDINATE DATA

PROPOSED ENTRANCE/LOT	PROPOSED TRAIL
P.O.T. STA. = 10+00.00 N: 1510343.148 E: 2442353.027	POT STA. = 0+10.00 N: 1510475.083 E: 2442554.091
P.C. STA. = 10+50.90 N: 1510394.046 E: 2442352.918	P.I. STA. = 4+12.88 N: 1510474.901 E: 2442956.976
P.T. STA. = 11+21.68 N: 1510439.143 E: 2442397.918	P.C. STA. = 5+44.69 N: 1510473.554 E: 2443088.771
P.I. STA. = 12+88.09 N: 1510439.143 E: 2442564.328	P.T. STA. = 6+12.36 N: 1510497.436 E: 2443150.353
P.I. STA. = 13+08.75 N: 1510433.069 E: 2442584.077	POT STA. = 6+78.81 N: 1510542.738 E: 2443198.971
P.O.T. STA. = 16+28.75 N: 1510432.925 E: 2442904.317	

BENCHMARK:
 N.E. CORNER OF STEEL LID NEAR
 WATER FOUNTAIN.
 ELEVATION = 738.04



FILE NAME = L:\1007\1106610\10_0\Draw\10400_Sheets\10400_Ties_BM_Alta.dgn	USER NAME = Kristin Timmons	DESIGNED - KLT	REVISED -
Default	PLT SCALE = 60.0000 / in.	DRAWN - GLD	REVISED -
	PLT DATE = 2/5/2013	CHECKED - SPH	REVISED -
		DATE = 2/1/2013	REVISED -

**STATE OF ILLINOIS
 DEPARTMENT OF TRANSPORTATION**

**SURVEY CONTROL, TIES AND BENCHMARKS - ALTA
 ROCK ISLAND TRAIL STATE PARK**

SCALE: 1" = 30' SHEET OF SHEETS STA. TO STA.

F.A. RTE.	SECTION	COUNTY	TOTAL SHEETS	SHEET NO.
	PARK ROADS	PEORIA/STARK	37	11
CONTRACT NO. 46256				
ILLINOIS FED. AID PROJECT				