

STATE OF ILLINOIS  
DEPARTMENT OF TRANSPORTATION

F.A. RTE.	SECTION	COUNTY	TOTAL SHEETS	SHEET NO.
	D7 CAPE SEAL 2025-1	CUMBERLAND	12	1
ILLINOIS			CONTRACT NO. 74C50	

\* F.A.P. 824 &amp; F.A.S. 1652

D-97-096-23

FOR INDEX OF SHEETS, SEE SHEET NO. 2

ADT = 3300 (2025)

OMMISIONS:  
STATOIN 743+94 TO 762+67

# PROPOSED HIGHWAY PLANS

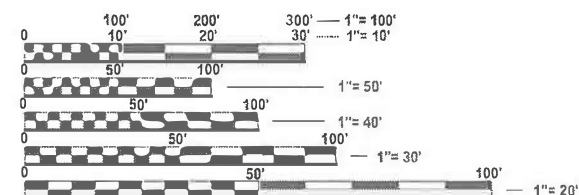
F.A.S. ROUTE 1652 & F.A.P. ROUTE 824 (US 45)  
SECTION D7 CAPE SEAL 2025-1  
PROJECT STP-1JST(428)  
CAPE SEAL  
CUMBERLAND COUNTY

C-97-127-23



PROJECT OMMISION:  
STA. 743+94 TO 762+67

PROJECT ENDS:  
STA. 1010+90



FULL SIZE PLANS HAVE BEEN PREPARED USING STANDARD  
ENGINEERING SCALES. REDUCED SIZED PLANS WILL NOT  
CONFORM TO STANDARD SCALES. IN MAKING MEASUREMENTS  
ON REDUCED PLANS, THE ABOVE SCALES MAY BE USED.

J.U.L.I.E.  
JOINT UTILITY LOCATION INFORMATION FOR EXCAVATION  
1-800-892-0123  
OR 811

PROJECT ENGINEER: MATT BOWER  
PROJECT MANAGER: JARED BLOEMER

CONTRACT NO. 74C50

PROJECT BEGINS:  
SHELBY/CUMBERLAND COUNTY LINE  
STA. 597+71

GROSS LENGTH = 41,319 FT. = 7.826 MILE  
NET LENGTH = 39,446 FT. = 7.471 MILE

STATE OF ILLINOIS  
DEPARTMENT OF TRANSPORTATION

SUBMITTED January 29 20 25  
Loe Pansky  
REGIONAL ENGINEER

March 21 20 25  
[Signature]  
ENGINEER OF DESIGN AND ENVIRONMENT

March 21 20 25  
[Signature]  
DIRECTOR OF HIGHWAYS PROJECT IMPLEMENTATION

PRINTED BY THE AUTHORITY  
OF THE STATE OF ILLINOIS

GENERAL NOTES

FOR CAPE SEAL, THE AGGREGATE GRADATION FOR THE A-1 BITUMINOUS SURFACE TREATMENT SHALL BE CRUSHED STONE, CA 16, AND FRICTION AGGREGATE MIXTURE D.

THE QUANTITY FOR PAINT PAVEMENT MARKING - LINE 4" ALLOWS FOR A SECOND APPLICATION AFTER A CURE TIME OF 30 CALENDER DAYS FROM THE FIRST APPLICATION.

INDEX OF SHEETS

SHEET NO.	ITEM
1	COVER SHEET
2	INDEX OF SHEETS, LIST OF STANDARDS, AND GENERAL NOTES
3	SUMMARY OF QUANTITIES
4-6	TYPICAL SECTIONS
7	SCHEDULE OF QUANTITIES
8	SURVEY MARKERS
9-12	PAVEMENT MARKING AND RAISED REFLECTIVE PAVEMENT MARKERS

THE FOLLOWING STANDARDS ARE A PART OF THESE PLANS AND ARE INCLUDED AFTER SHEET NO. 16:

STANDARD NO.	DESCRIPTION
000001-08	LANE CLOSURE, MULTILANE, WITH BARRIER, FOR SPEEDS >= 45 MPH TO 55 MPH
001006	DECIMAL OF AN INCH AND OF A FOOT
667101-02	PERMANENT SURVEY MARKERS
701001-02	OFF-ROAD OPERATIONS, 2L, 2W, MORE THAN 15' AWAY
701006-05	OFF-ROAD OPERATIONS, 2L, 2W, 15' TO 24" FROM PAVEMENT EDGE
701301-04	LANE CLOSURE, 2L, 2W, SHORT TIME OPERATIONS
701306-04	LANE CLOSURE, 2L, 2W, SLOW MOVING OPERATIONS DAY ONLY, FOR SPEEDS >= 45 MPH
701311-03	LANE CLOSURE, 2L, 2W, MOVING OPERATIONS - DAY ONLY
701901-10	TRAFFIC CONTROL DEVICES
780001-05	TYPICAL PAVEMENT MARKINGS
781001-04	TYPICAL APPLICATIONS RAISED REFLECTIVE PAVEMENT MARKERS

MODEL: Index of Sheets [Sheet]  
FILE NAME: c:\p\work\pwt\illinois.gov\_jared.bloemer\illinois.gov\0911138\0774C50-sht-genmole.dgn

	USER NAME = Jared.Bloemer	DESIGNED - J. Bloemer	REVISED -	STATE OF ILLINOIS DEPARTMENT OF TRANSPORTATION	INDEX OF SHEETS, GENERAL NOTES, & LIST OF STANDARDS			F.A. * RTE.	SECTION	COUNTY	TOTAL SHEETS	SHEET NO.
		DRAWN - J. Bloemer	REVISED -						D7 CAPE SEAL 2025-1	CUMBERLAND	12	2
		CHECKED -	REVISED -					CONTRACT NO. 74C50				
	PLOT DATE = 1/28/2025	DATE -	REVISED -		SCALE:	SHEET 1	OF 1	SHEETS	STA.	TO STA.	ILLINOIS FED. AID PROJECT	

\* F.A.P. 824 & F.A.S. 1652

MODEL: SOQ [Sheet]  
FILE NAME: c:\p\work\pwrtd\illinois.gov\_jared.bloemer@d0911138\0774C50-sh-SOQ.dgn

CODE NO.	ITEM	UNIT	TOTAL QUANTITY	CONSTRUCTION CODE	
				80% FED 20% STATE	
				ROADWAY	ROADWAY
				0005 FAS 1652	0005 FAP 824
40500061	CAPE SEAL	SQ YD	102130	54423	47707
67100100	MOBILIZATION	L SUM	1	0.5	0.5
70100460	TRAFFIC CONTROL AND PROTECTION, STANDARD 701306	L SUM	1	0.5	0.5
70107025	CHANGEABLE MESSAGE SIGN	CAL DA	28	14	14
70300100	SHORT TERM PAVEMENT MARKING	FOOT	4000	2193	1807
70300150	SHORT TERM PAVEMENT MARKING REMOVAL	SQ FT	1335	732	603
70300211	TEMPORARY PAVEMENT MARKING LETTERS AND SYMBOLS - PAINT	SQ FT	123	123	0
70300221	TEMPORARY PAVEMENT MARKING - LINE 4"- PAINT	FOOT	80955	44020	36935
70300281	TEMPORARY PAVEMENT MARKING - LINE 24"- PAINT	FOOT	69	69	0
* 78000100	THERMOPLASTIC PAVEMENT MARKING - LETTERS AND SYMBOLS	SQ FT	123	123	0
* 78000200	THERMOPLASTIC PAVEMENT MARKING - LINE 4"	FOOT	22145	20164	1981
* 78000650	THERMOPLASTIC PAVEMENT MARKING - LINE 24"	FOOT	69	69	0
* 78001110	PAINT PAVEMENT MARKING - LINE 4"	FOOT	117,620	47,712	69908
* 78100100	RAISED REFLECTIVE PAVEMENT MARKER	EACH	512	288	224

\* SPECIALTY ITEM

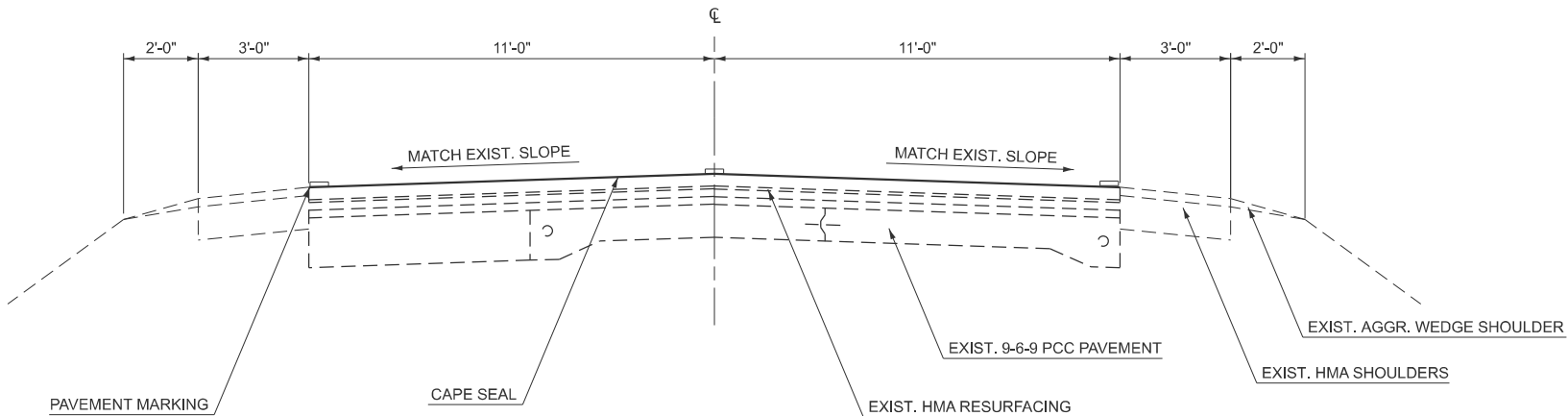
CODE NO.	ITEM	UNIT	TOTAL QUANTITY	CONSTRUCTION CODE	
				80% FED 20% STATE	
				ROADWAY	ROADWAY
				0005 FAS 1652	0005 FAP 824
78300200	RAISED REFLECTIVE PAVEMENT MARKER REMOVAL	EACH	495	271	224
Z0048665	RAILROAD PROTECTIVE LIABILITY INSURANCE	L SUM	1	1	0
Z0049799	PROTECTING OR RESETTNG SURVEY MARKERS	EACH	5	3	2

	USER NAME = jared.bloemer		DESIGNED - J. Bloemer	REVISED -	STATE OF ILLINOIS DEPARTMENT OF TRANSPORTATION	SUMMARY OF QUANTITIES				F.A. * RTE.	SECTION	COUNTY	TOTAL SHEETS	SHEET NO.
			DRAWN - J. Bloemer	REVISED -							D7 CAPE SEAL 2025-1	CUMBERLAND	12	3
			CHECKED -	REVISED -							CONTRACT NO. 74C50			
	PLOT DATE = 2/4/2025		DATE -	REVISED -		SCALE:	SHEET 1	OF 1	SHEETS	STA.	TO STA.	ILLINOIS   FED. AID PROJECT		

\* F.A.P. 824 & F.A.S. 1652

US 45 PROPOSED TYPICAL CROSS SECTION

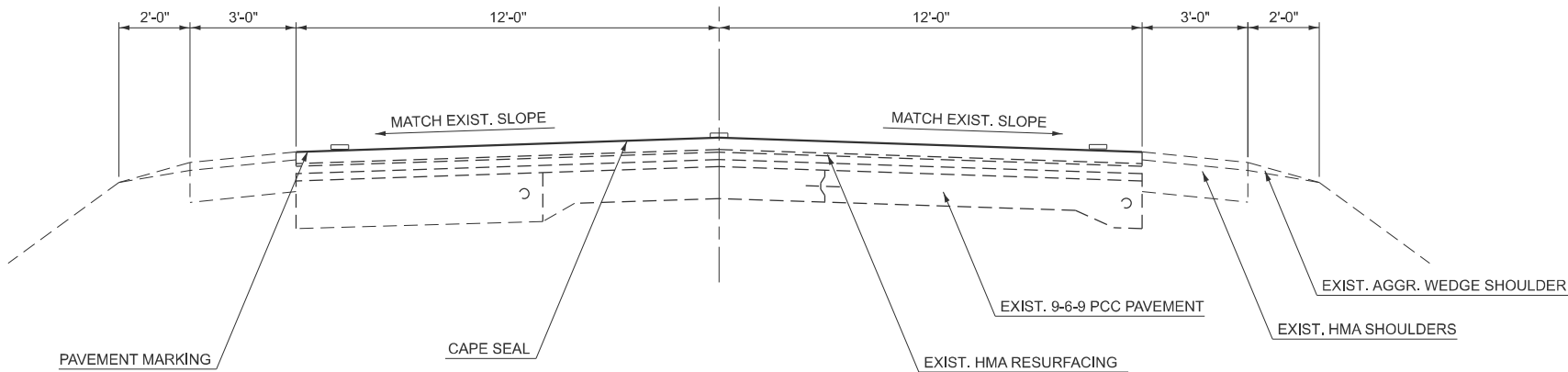
STA. 597+71 TO STA. 735+40



NOTE: NOT DRAWN TO SCALE

US 45 PROPOSED TYPICAL CROSS SECTION

STA. 735+40 TO STA. 743+20



NOTE: NOT DRAWN TO SCALE

MODEL: Typical (Sheet)  
FILE NAME: c:\p\work\pwalk\m091138\0774C50-sh-typical.dgn

	USER NAME   = Travis.Walk	DESIGNED   -   J. Bloemer	REVISED   -	STATE OF ILLINOIS DEPARTMENT OF TRANSPORTATION	TYPICAL SECTIONS					F.A. * RTE.	SECTION	COUNTY	TOTAL SHEETS	SHEET NO.
		DRAWN    -   J. Bloemer	REVISED   -								D7 CAPE SEAL 2025-1	CUMBERLAND	12	4
		CHECKED   -	REVISED   -							CONTRACT NO. 74C50				
	PLOT DATE   = 1/27/2025	DATE       -	REVISED   -		SCALE:	SHEET 1	OF 3	SHEETS	STA.	TO STA.	ILLINOIS   FED. AID PROJECT			

\* F.A.P. 824 & F.A.S. 1652

STA. 761+90 TO STA. 772+72  
STA. 808+35 TO STA. 822+35  
STA. 831+43 TO STA. 838+20  
STA. 847+04 TO STA. 984+81  
STA. 993+32 TO STA. 1010+90



STA. 772+72 TO STA. 808+35  
STA. 838+20 TO STA. 847+04



**STATE OF ILLINOIS  
DEPARTMENT OF TRANSPORTATION**

## TYPICAL SECTIONS

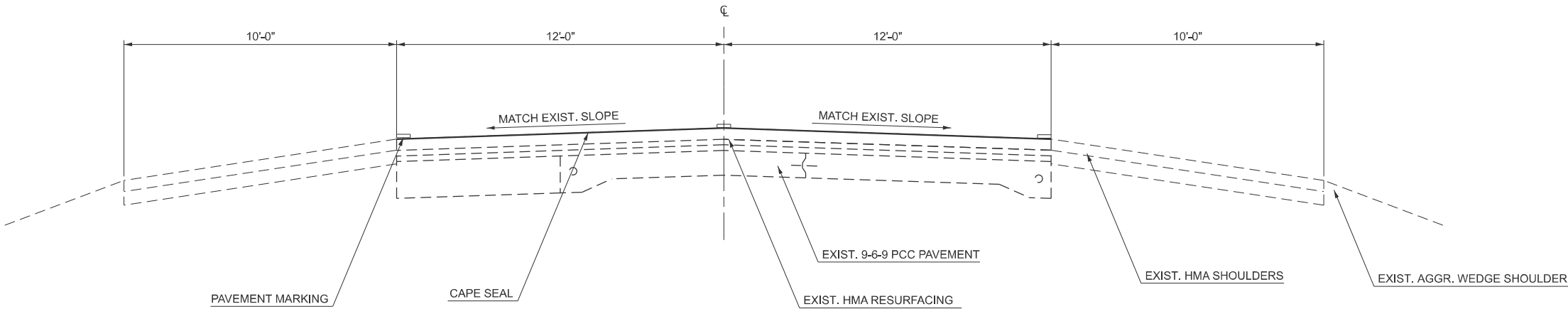
F.A. * RTE.	SECTION	COUNTY	TOTAL SHEETS	SHEET NO.
	D7 CAPE SEAL 2025-1	CUMBERLAND	12	5
CONTRACT NO. 74C50				
ILLINOIS		FED. AID PROJECT		

\* F.A.P. 824 & F.A.S. 1652

MODEL: Typical-2 [Sheet]  
FILE NAME: c:\pw\_work\pwwork\walkm\0911138\ID774C50-sht-typical.dgn

US 45 PROPOSED TYPICAL CROSS SECTION

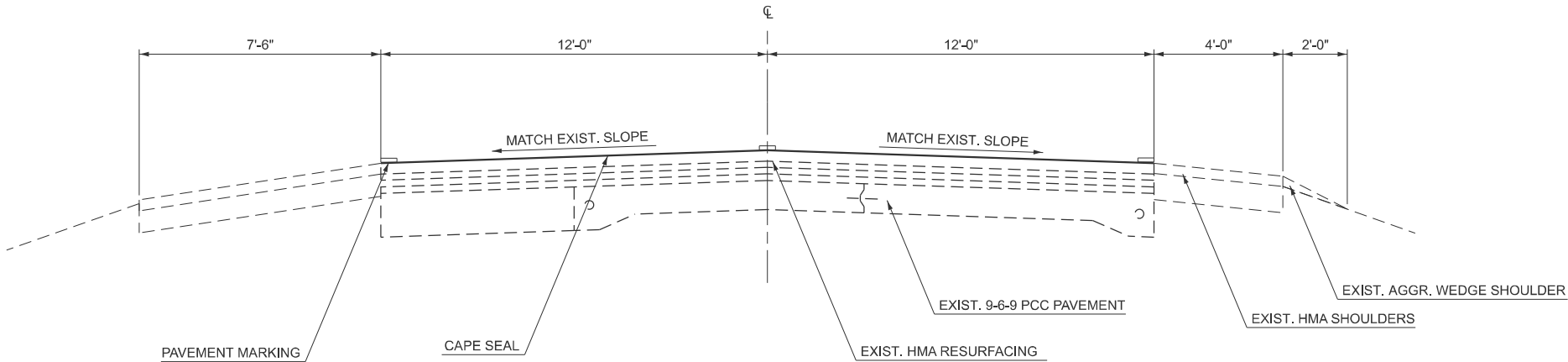
STA. 822+35 TO STA. 831+43



NOTE: NOT DRAWN TO SCALE

US 45 PROPOSED TYPICAL CROSS SECTION

STA. 984+81 TO STA. 993+32



NOTE: NOT DRAWN TO SCALE

MODEL: Typical-3 [Sheet]  
FILE NAME: c:\p\work\tdiwalk\m091138\0774C50-shit-typical.dgn

	USER NAME   = Travis.Walk	DESIGNED   -   J. Bloemer	REVISED   -	STATE OF ILLINOIS DEPARTMENT OF TRANSPORTATION	TYPICAL SECTIONS				F.A. * RTE.	SECTION	COUNTY	TOTAL SHEETS	SHEET NO.	
		DRAWN   -   J. Bloemer	REVISED   -							D7 CAPE SEAL 2025-1	CUMBERLAND	12	6	
		CHECKED   -	REVISED   -						CONTRACT NO. 74C50					
	PLOT DATE   = 1/27/2025	DATE       -	REVISED   -		SCALE:	SHEET 3	OF 3	SHEETS	STA.	TO STA.	ILLINOIS   FED. AID PROJECT			

\* F.A.P. 824 & F.A.S. 1652

MODEL: Schedules [Sheet]  
FILE NAME: c:\p\work\pvt\otw\walkm\4091138\0774C50-shlt-schedule.dgn

STATION	TO	STATION	LENGTH	CENTERLINE ORIENTATION	CENTERLINE	EOP	PAINT PAVEMENT MARKING - LINE 4"		THERMOPLASTIC PAVEMENT MARKING - LINE 4"		THERMOPLASTIC PAVEMENT MARKING - LETTERS AND SYMBOLS	THERMOPLASTIC PAVEMENT MARKING - LINE 24"
							WHITE	YELLOW	WHITE	YELLOW	WHITE	WHITE
			78001110		78000200		78000100	78000650				
(FOOT)		(FOOT)		(SQ FT)	(FOOT)							
FAS 1652												
597+71		706+99	10,928.00	SD	10,928	21,605	21,605	1,093	0	0	0	0
706+99		712+50	551.00	NPZ RT	551	1,102	1,102	55	0	0	0	0
712+50		716+18	368.00	SD	368	736	0	0	736	37	0	0
716+18		722+21	603.00	NPZ LT	603	1,206	0	0	1,206	61	0	0
722+21		730+97	876.00	SD	876	1,752	0	0	1,752	88	0	0
730+97		735+50	453.00	NPZ RT	453	853	0	0	853	46	61	33.0
735+50		741+95	645.00	NPZ LT	645	1,265	0	0	1,265	65	61	36.0
741+95		743+94	199.00	SD	199	337	0	0	337	20	0	0
PROJECT OMISSION 743+94 TO 762+67												
762+67		832+00	6,933.00	SD	6,933	13,004	0	0	13004	694	0	0
FAS 1652 SUB TOTAL							22707	1148	19153	1011	122	69
FAP 824												
832+00		842+50	1,050.00	SD	1,050	1,876	0	0	1876	105	0	0
842+50		1010+90	16,840.00	SD	16,840	33,270	33,270	1,684	0	0	0	0
FAP 824 SUB TOTAL							33,270	1,684	1,876	105	0	0
1ST APPLICATION TOTAL							58,810		22,145		122	69
2ND APPLICATION TOTAL							58,810		0		0	0
GRAND TOTAL							117,620		22,145		122	69

SD - SKIP DASH  
NPZ - NO PASSING ZONE  
EL - EDGE LINE  
LT -LEFT  
RT - RIGHT

LOCATION	STATION	TO	STATION	LENGTH	STRIPE WIDTH	NUMBER OF STRIPES	SHORT TERM PAVEMENT MARKING		SHORT TERM PAVEMENT MARKING REMOVAL
				(FOOT)	(INCH)		WHITE	YELLOW	
							70300100		70300150
							(FOOT)		(SQ FT)
FAS 1652									
CL	597+71		743+94	14,623	4.00	1.00		1,463.0	488.0
PROJECT OMISSION 743+94 TO 762+67									
CL	762+67		832+00	6,933	4.00	1.00		693.0	231.0
LT & RT EL	822+35		831+43	908	4.00	2.00	37.0		13.0
FAS 1652 SUB TOTAL							37.0	2,156.0	732.0
FAP 842									
CL	832+00		1010+90	17,890	4.00	1.00		1,789.0	597.0
LT EL	984+81		993+32	851	4.00	1.00	18.0		6.0
FAP 824 SUB TOTAL							18.0	1,789.0	603.0
GRAND TOTAL =							4,000.0		1,335.0

STATION	TO	STATION	LENGTH	WIDTH	CAPE SEAL
			(FOOT)	(FOOT)	40500061 (SQ YD)
FAS 1652					
597+71		735+40	13769	22	33658
735+40		743+94	854	24	2277
PROJECT OMISSION 743+94 TO 762+67					
762+67		832+00	6933	24	18488
FAS 1652 SUB TOTAL					54423
FAP 824					
832+00		1010+90	17890	24	47707
FAP 824 SUB TOTAL					47707
GRAND TOTAL =					102,130

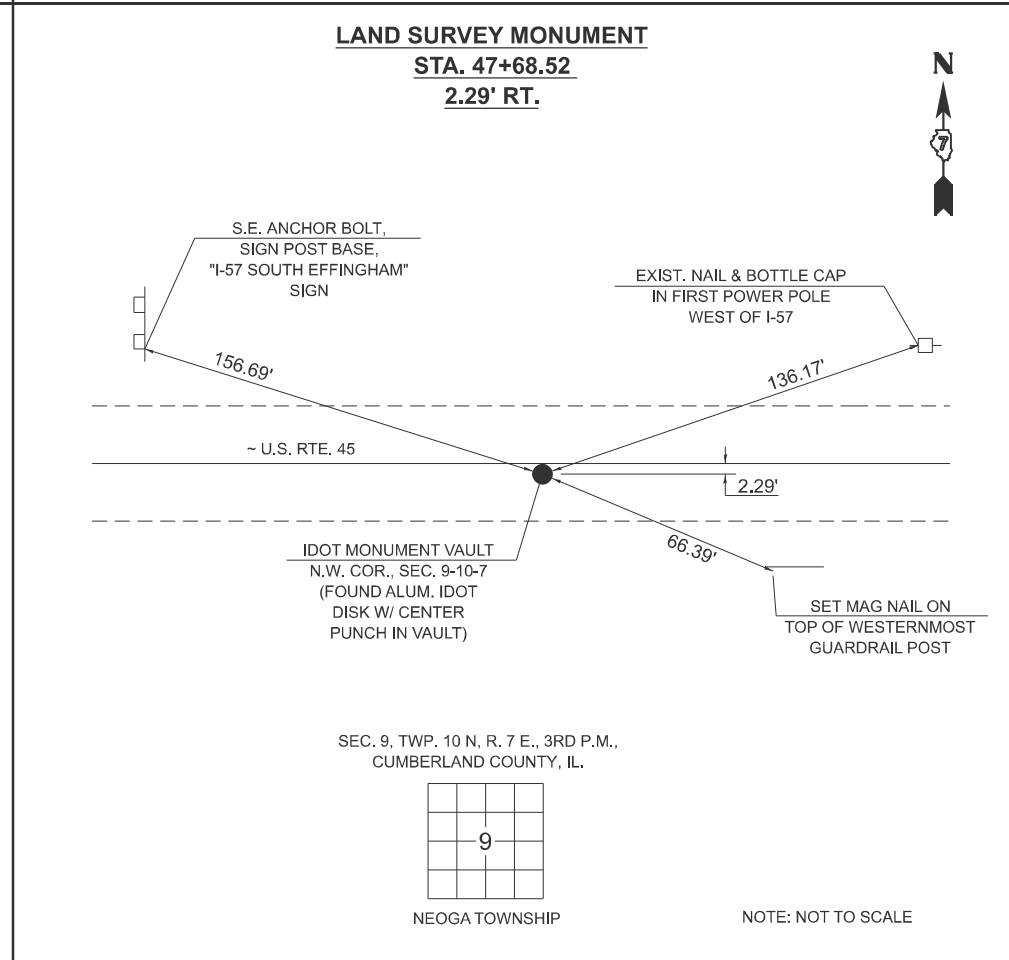
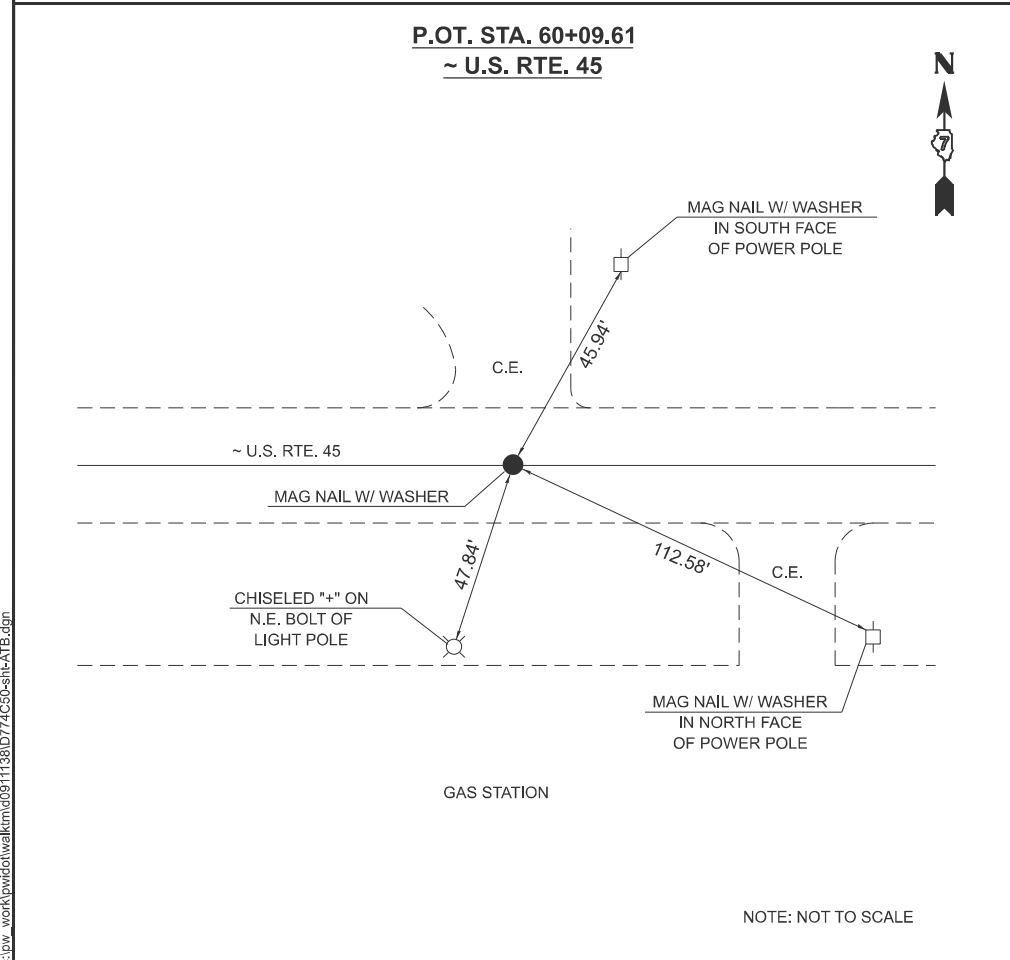
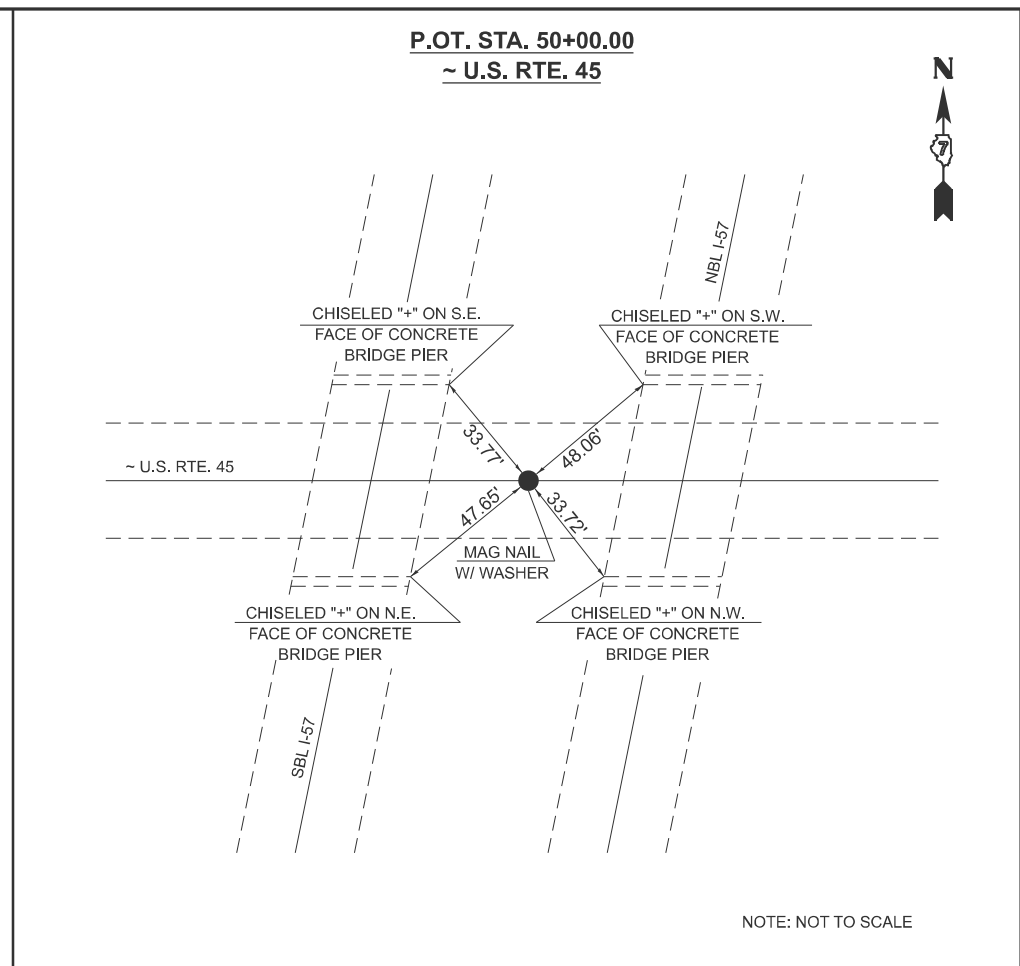
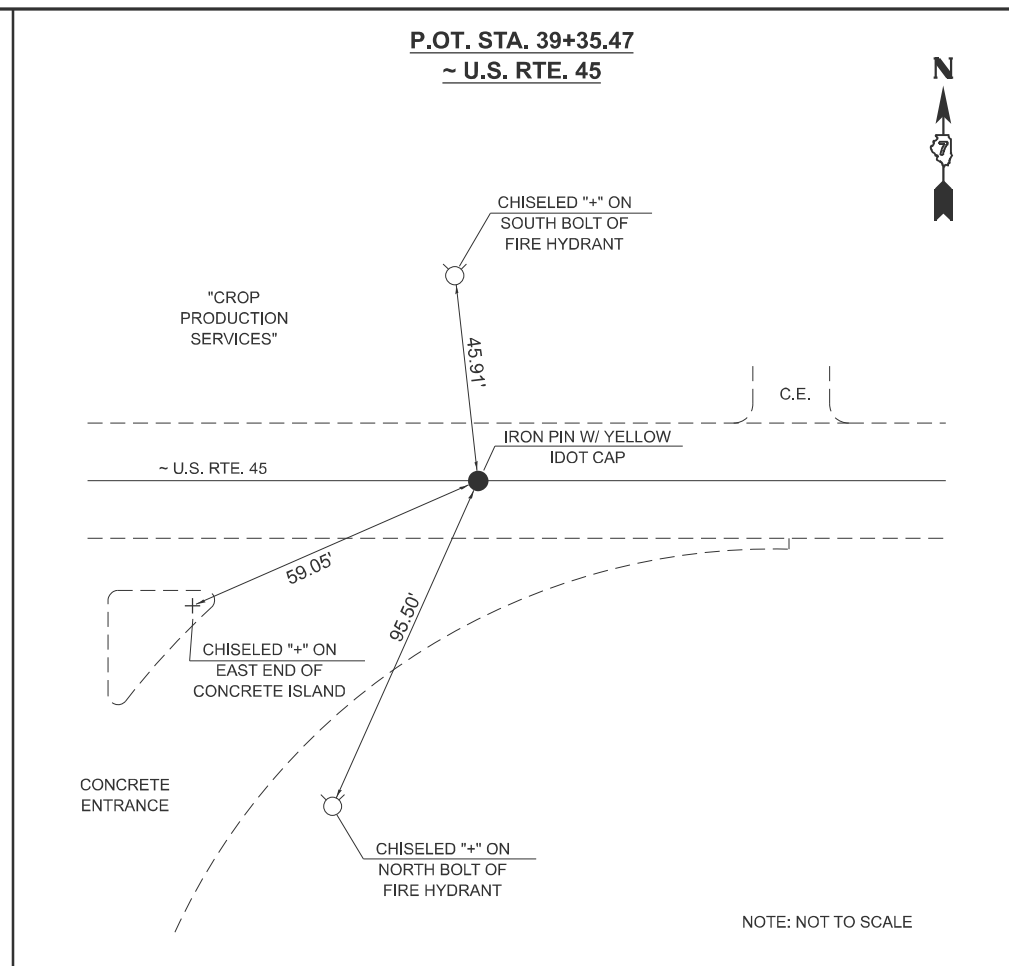
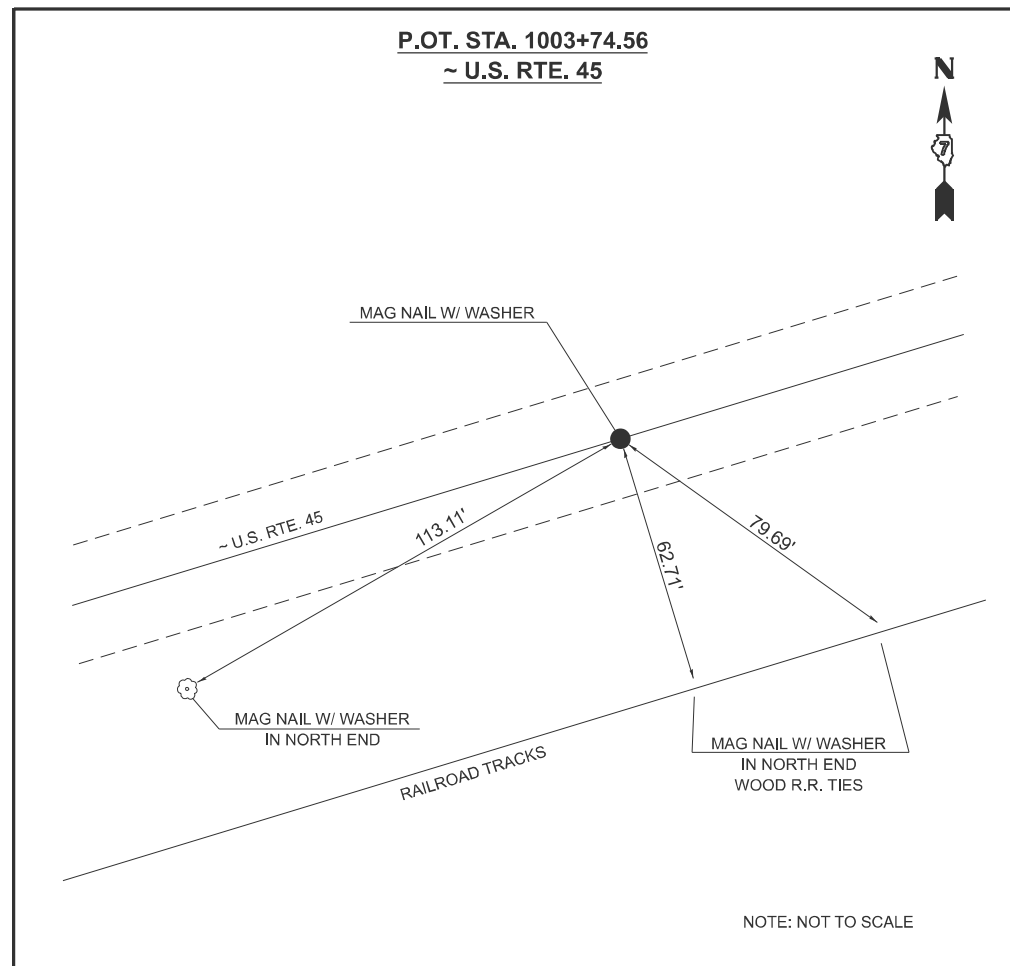
STATION	TO	STATION	LENGTH (FOOT)	DISTANCE APART	RAISED REFLECTIVE PAVEMENT MARKING
					78100100
					(EACH)
FAS 1652					
597+71		735+50	13779	80	172
735+50		743+94	844	80	11
PROJECT OMISSION 743+94 TO 762+67					
762+67		772+50	983	80	12
772+50		787+50	1500	40	38
787+50		832+00	4450	78	55
FAS 1652 SUB TOTAL					288
FAP 824					
832+00		1010+90	17890	80	224
FAP 824 SUB TOTAL					224
GRAND TOTAL =					512

STATION	TO	STATION	LENGTH	RAISED REFLECTIVE PAVEMENT MARKING REMOVAL
			(FOOT)	78300200
				(EACH)
FAS 1652				
597+71		735+50	13779	173
735+50		743+94	844	11
PROJECT OMISSION 743+94 TO 762+67				
762+67		832+00	6933	87
FAS 1652 SUB TOTAL				271
FAP 824				
832+00		1010+90	17890	224
FAP 824 SUB TOTAL				224
GRAND TOTAL =				495

REV - MS

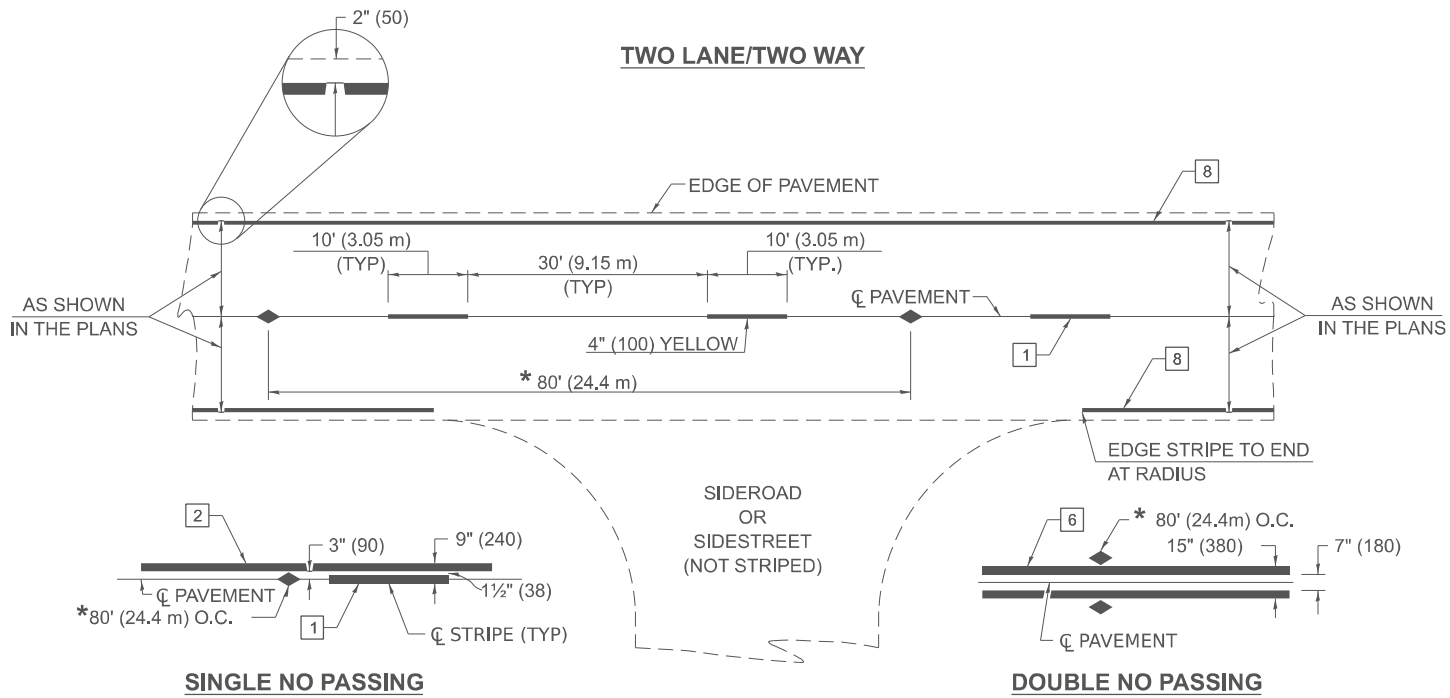
	USER NAME = Travis.Walk			DESIGNED - J. Bloemer	REVISED -	STATE OF ILLINOIS DEPARTMENT OF TRANSPORTATION	SCHEDULES			F.A. * RTE.	SECTION	COUNTY	TOTAL SHEETS	SHEET NO.
				DRAWN - J. Bloemer	REVISED -						D7 CAPE SEAL 2025-1	CUMBERLAND	12	7
				CHECKED -	REVISED -						CONTRACT NO. 74C50			
				PLOT DATE = 1/27/2025	DATE -						ILLINOIS	FED. AID PROJECT		
					REVISED -					SCALE:	SHEET 1	OF 1	SHEETS	STA. TO STA.

\* F.A.P. 824 & F.A.S. 1652



NORTHING	EASTING	Description	STATION	OFFSET
979563.54	970114.37	Alum. Disk - POT	1003+74.56	0.0'
970183.80	956954.06	Alum. Disk - POT	60+09.61	0.0'
970185.45	955944.51	Alum. Disk - POT	50+00	0.0'
970183.41	955712.98	Iron Pin buried 4"- Section Cor.	47+68.52	2.4'RT
970187.16	954879.95	Alum. Disk - POT	39+35.47	0.0'

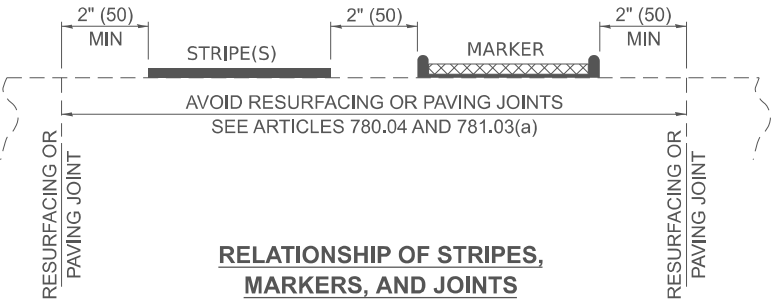
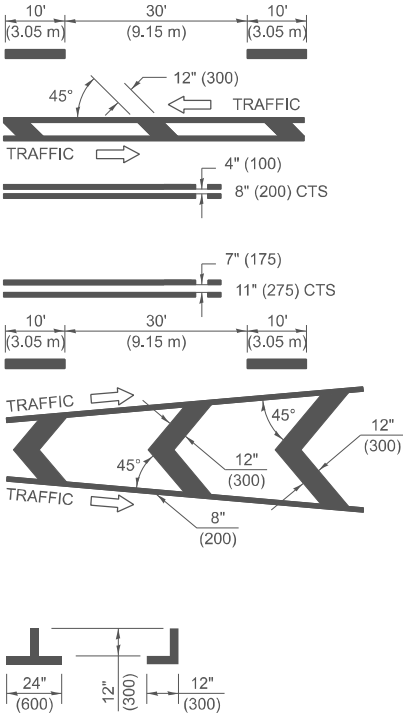




\* REDUCE TO 40' (12.2 m) O.C. ON CURVES WITH POSTED OR ADVISORY SPEEDS OF 45 MPH (70 km/h) OR LESS.

PAVEMENT MARKERS LEGEND

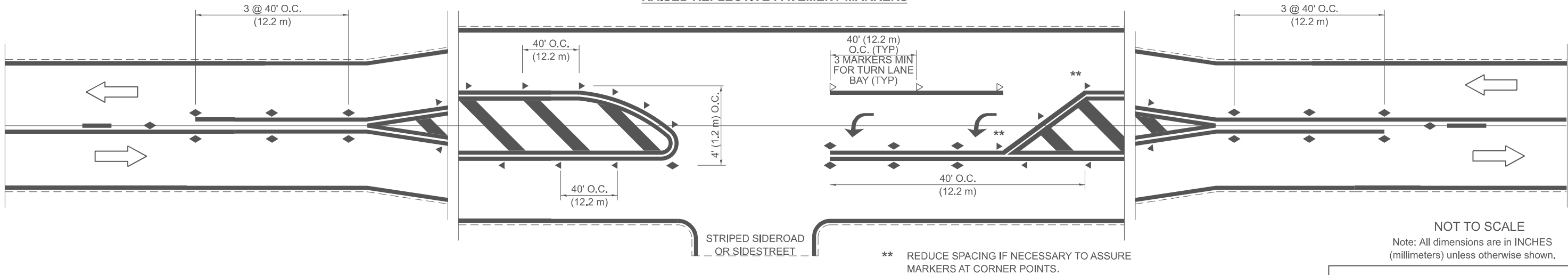
- 1 4" (100) SKIP-DASH (YELLOW)
- 2 4" (100) SOLID (YELLOW)
- 3 12" (300) DIAGONAL (YELLOW)
- 4 4" (100) DOUBLE YELLOW (NARROW)
- 5 12" (300) SOLID (WHITE)
- 6 4" (100) DOUBLE YELLOW (WIDE)
- 7 6" (150) SKIP-DASH (WHITE)
- 8 4" (100) SOLID (WHITE)
- 9 12" (300) DIAGONAL (WHITE)
- 10 6" (150) SOLID (WHITE)
- 11 24" (600) STOP BAR (WHITE)
- 12 8" (200) SOLID (WHITE)
- 13 4" (100) PARKING (WHITE)



TYPICAL PAVEMENT MARKERS LEGEND

- ◆ TWO-WAY AMBER MARKER
- ▶ ONE-WAY AMBER MARKER
- ▷ ONE-WAY CRYSTAL MARKER

RAISED REFLECTIVE PAVEMENT MARKERS



NOT TO SCALE  
Note: All dimensions are in INCHES (millimeters) unless otherwise shown.

DISTRICT 7 DETAIL NO. 78000001

USER NAME = Travis.Walk	DESIGNED - J. Bloemer	REVISED -
	DRAWN - J. Bloemer	REVISED -
	CHECKED -	REVISED -
PLOT DATE = 1/27/2025	DATE -	REVISED -

STATE OF ILLINOIS  
DEPARTMENT OF TRANSPORTATION

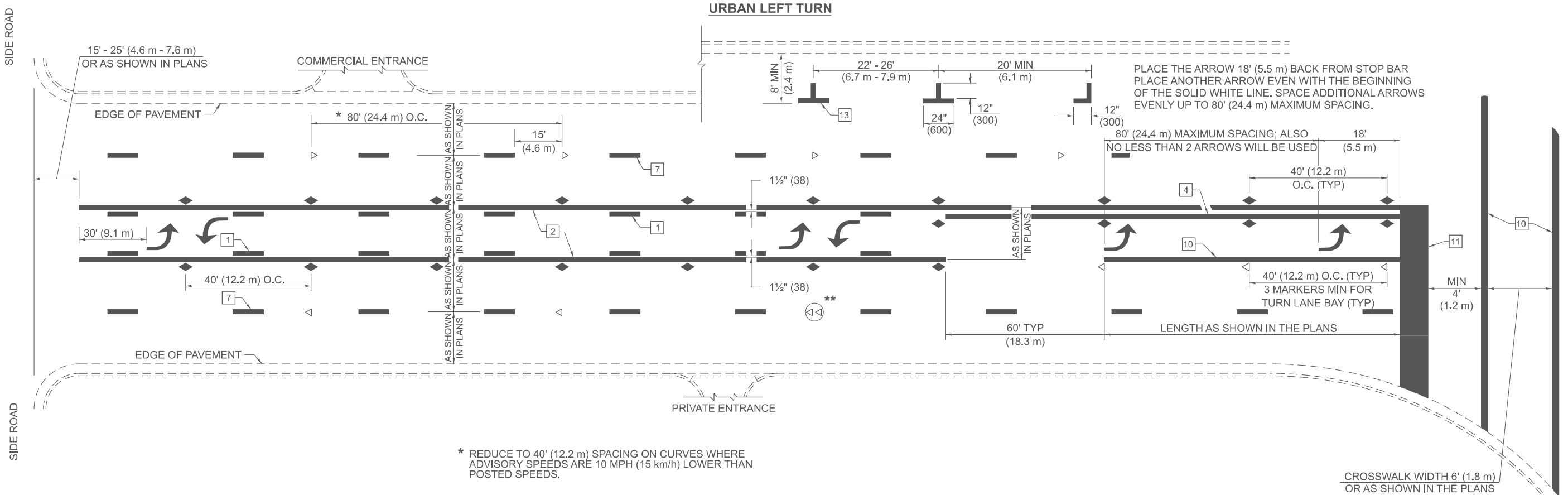
PAVEMENT MARKING AND RAISED REFLECTIVE PAVEMENT MARKERS  
(RURAL & URBAN APPLICATIONS)

SCALE: SHEET 1 OF 4 SHEETS STA. TO STA.

F.A. * RTE.	SECTION	COUNTY	TOTAL SHEETS	SHEET NO.
	D7 CAPE SEAL 2025-1	CUMBERLAND	12	9
CONTRACT NO. 74C50				
ILLINOIS FED. AID PROJECT				

\* F.A.P. 824 & F.A.S. 1652

MODEL: Details-2 [Sheet]  
FILE NAME: c:\paw\work\paw\illinois.gov\jared.bloemer\0911138\0774C50-sht-details.dgn



\* REDUCE TO 40' (12.2 m) SPACING ON CURVES WHERE ADVISORY SPEEDS ARE 10 MPH (15 km/h) LOWER THAN POSTED SPEEDS.

\*\* DOUBLE LANE LINE MARKERS SHALL BE SPECIFIED AND SPACED AS SHOWN IN HIGHWAY STANDARD 781001 FOR MULTI-LANE DIVIDED AND UNDIVIDED HIGHWAYS.

### PAVEMENT MARKING LEGEND

1 4" (100) SKIP-DASH (YELLOW)

2 4" (100) SOLID (YELLOW)

3 12" (300) DIAGONAL (YELLOW)

4 4" (100) DOUBLE YELLOW (NARROW)

5 12" (300) SOLID (WHITE)

6 4" (100) DOUBLE YELLOW (WIDE)

7 6" (150) SKIP-DASH (WHITE)

8 4" (100) SOLID (WHITE)

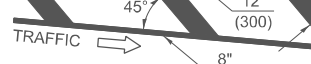
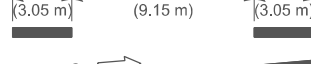
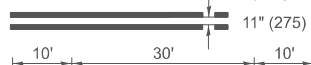
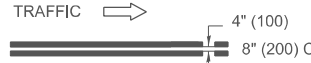
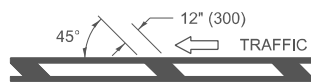
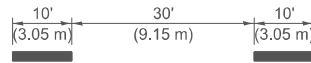
9 12" (300) DIAGONAL (WHITE)

10 6" (150) SOLID (WHITE)

11 24" (600) STOP BAR (WHITE)

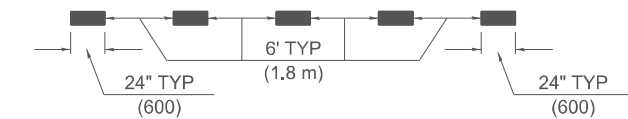
12 8" (200) SOLID (WHITE)

13 4" (100) PARKING (WHITE)

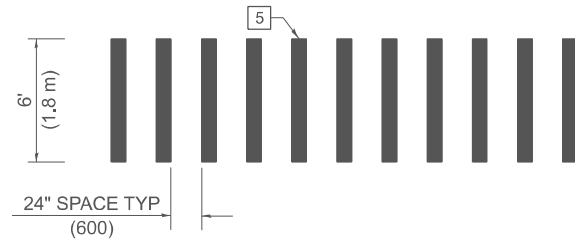


### GENERAL NOTES

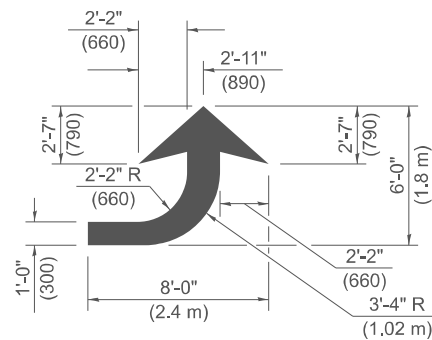
- TURN ARROW PAIRS SHALL BE PLACED AT 250' (75 m) INTERVALS AND SHALL BE EVENLY SPACED BETWEEN BOTH ENDS OF THE BIDIRECTIONAL LEFT TURN LANE USE A MINIMUM OF TWO PAIRS PER BLOCK.
- THE SOLID YELLOW PAVEMENT MARKING [2] SHOULD GENERALLY START OR END NEAR THE RADIUS POINT OF EACH STREET RETURN EXCEPT WHERE ONE OR BOTH ENDS WOULD INCLUDE STOP BARS.
- THE SKIP-DASH PAVEMENT MARKING [1] OR [7] SHOULD BE CENTERED BETWEEN BOTH ENDS OF EACH CITY BLOCK AND SHALL BE PLACED SO THEY LINE UP ACROSS FROM EACH OTHER.
- USE LARGE ARROW SIZE FOR BOTH RURAL AND URBAN LOCATIONS. (SEE SECTION 780 FOR SYMBOLS TABLE)
- LANE LINE EXTENSIONS SHALL BE THE SAME COLOR AND WIDTH AS THE LANE LINE BEING EXTENDED.
- ALL WHITE SKIP-DASH LINES SHALL BE 6" IN WIDTH.



### LANE LINE EXTENSIONS

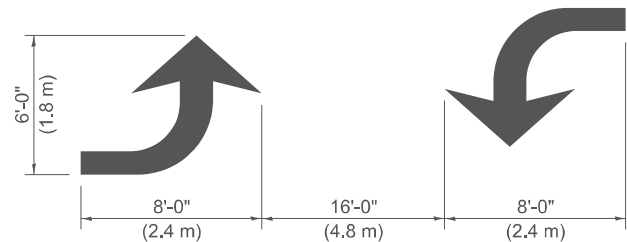


### CROSSWALK DETAIL (DECATUR CITY LIMITS ONLY)



### LEFT ARROW

REVERSE FOR RIGHT ARROW  
AREA = 15.6 SQ.FT. (1.47 m²)  
(WHITE)



### TYPICAL DOUBLE TURN ARROWS (WHITE)

NOT TO SCALE

Note: All dimensions are in INCHES  
(millimeters) unless otherwise shown.

### DISTRICT 7 DETAIL NO. 78000001

F.A. * RTE.	SECTION	COUNTY	TOTAL SHEETS	SHEET NO.
	D7 CAPE SEAL 2025-1	CUMBERLAND	12	10
CONTRACT NO. 74C50				
ILLINOIS FED. AID PROJECT				

\* F.A.P. 824 & F.A.S. 1652

STATE OF ILLINOIS  
DEPARTMENT OF TRANSPORTATION

PAVEMENT MARKING AND RAISED REFLECTIVE PAVEMENT MARKERS  
(RURAL & URBAN APPLICATIONS)

SCALE: SHEET 2 OF 4 SHEETS STA. TO STA.

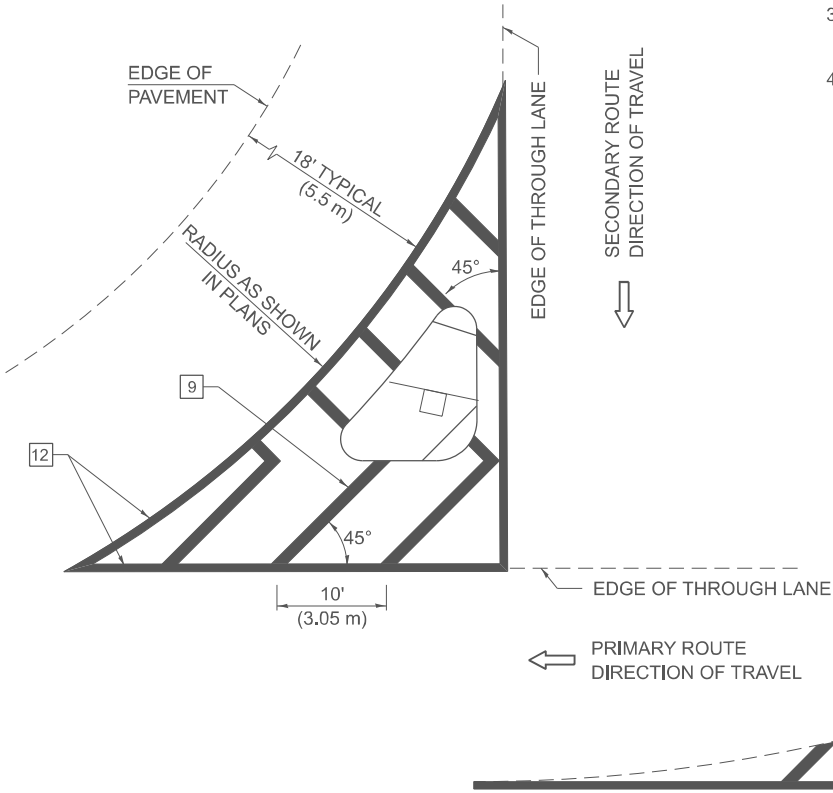
DESIGNED - J. Bloemer  
DRAWN - J. Bloemer  
CHECKED -  
DATE -

REVISED -  
REVISED -  
REVISED -  
REVISED -

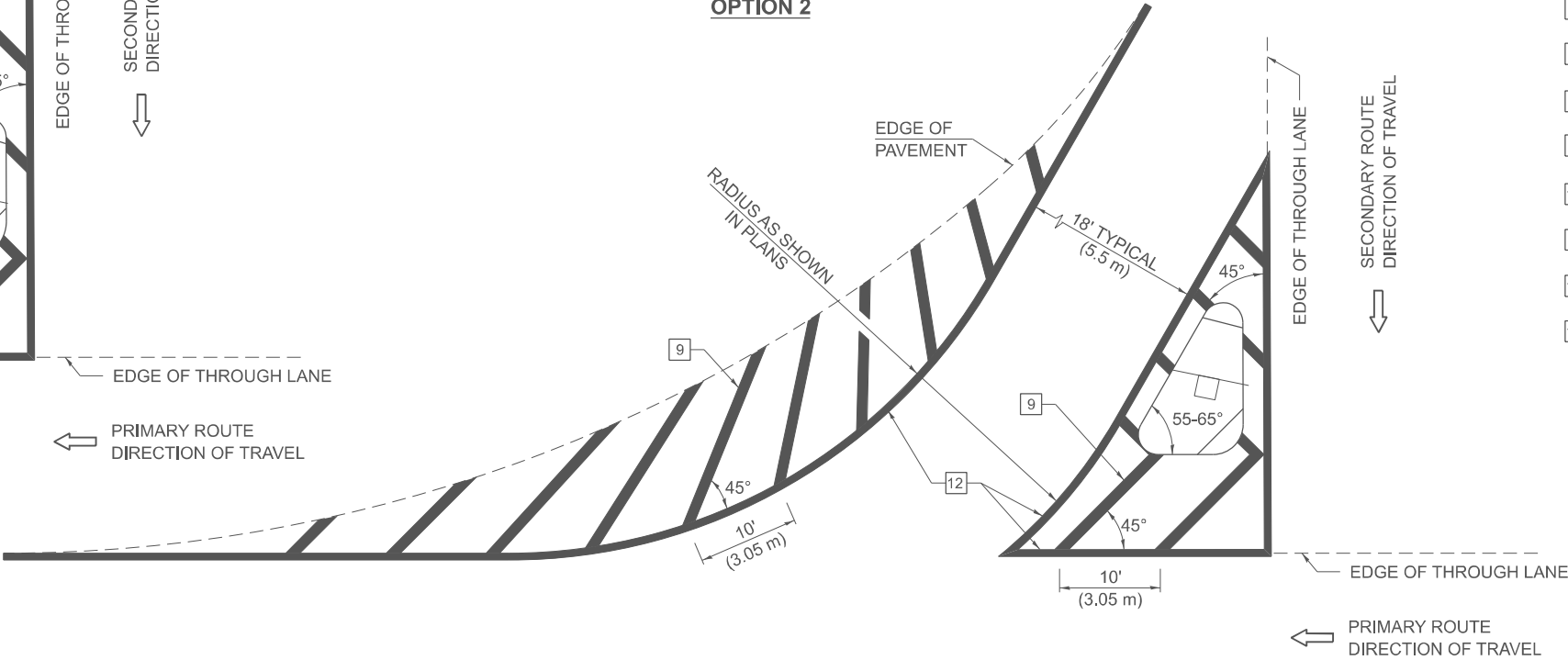
USER NAME = Travis.Walk  
PLOT DATE = 1/27/2025

ISLANDS

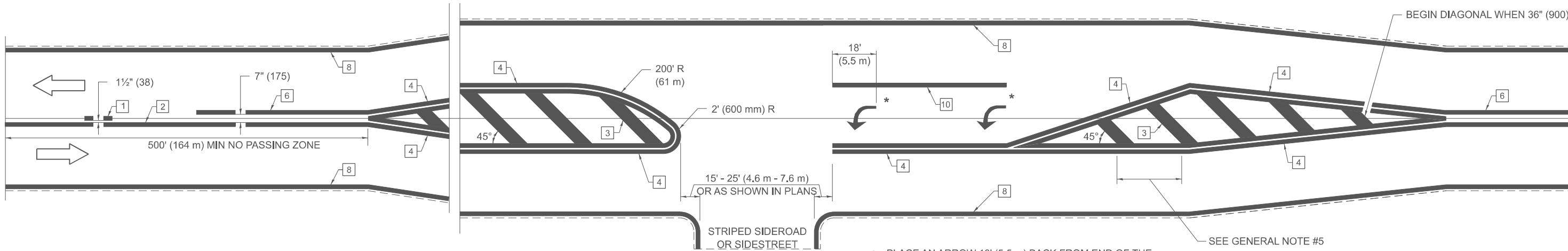
OPTION 1



OPTION 2



RURAL LEFT TURN STRIPING



GENERAL NOTES

1. RAISED AND CORRUGATED MEDIANS SHALL BE OUTLINED WITH [2].
2. SOME OF THE INFORMATION INCLUDED WITH THIS DETAIL MAY NOT BE APPLICABLE TO THIS IMPROVEMENT.
3. PAVEMENT MARKINGS ARE TO BE EXTENDED THROUGH OMISSIONS WHEN APPLICABLE.
4. FINAL PAVEMENT MARKINGS SHALL BE IN PLACE PRIOR TO PLACING ANY RAISED REFLECTIVE PAVEMENT MARKERS.
5. THE FOLLOWING CRITERIA SHALL BE USED FOR SELECTING THE DIAGONAL PAVEMENT MARKING SPACING:  

<30 MPH (<50 km/h)	15' (4.5 m)
30-45 MPH (50-75 km/h)	20' (6.0 m)
>45 MPH (>75 km/h)	30' (9.0 m)
6. THE USE OF ISLAND STRIPING OPTION 1 OR OPTION 2 SHALL BE AS SHOWN ON THE PLANS.

PAVEMENT MARKING LEGEND

[1]	4" (100) SKIP-DASH (YELLOW)
[2]	4" (100) SOLID (YELLOW)
[3]	12" (300) DIAGONAL (YELLOW)
[4]	4" (100) DOUBLE YELLOW (NARROW)
[5]	12" (300) SOLID (WHITE)
[6]	4" (100) DOUBLE YELLOW (WIDE)
[7]	6" (150) SKIP-DASH (WHITE)
[8]	4" (100) SOLID (WHITE)
[9]	12" (300) DIAGONAL (WHITE)
[10]	6" (150) SOLID (WHITE)
[11]	24" (600) STOP BAR (WHITE)
[12]	8" (200) SOLID (WHITE)
[13]	4" (100) PARKING (WHITE)

NOT TO SCALE  
Note: All dimensions are in INCHES (millimeters) unless otherwise shown.

DISTRICT 7 DETAIL NO. 78000001

F.A. * RTE.	SECTION	COUNTY	TOTAL SHEETS	SHEET NO.
	D7 CAPE SEAL 2025-1	CUMBERLAND	12	11
CONTRACT NO. 74C50				

\* F.A.P. 824 & F.A.S. 1652

STATE OF ILLINOIS  
DEPARTMENT OF TRANSPORTATION

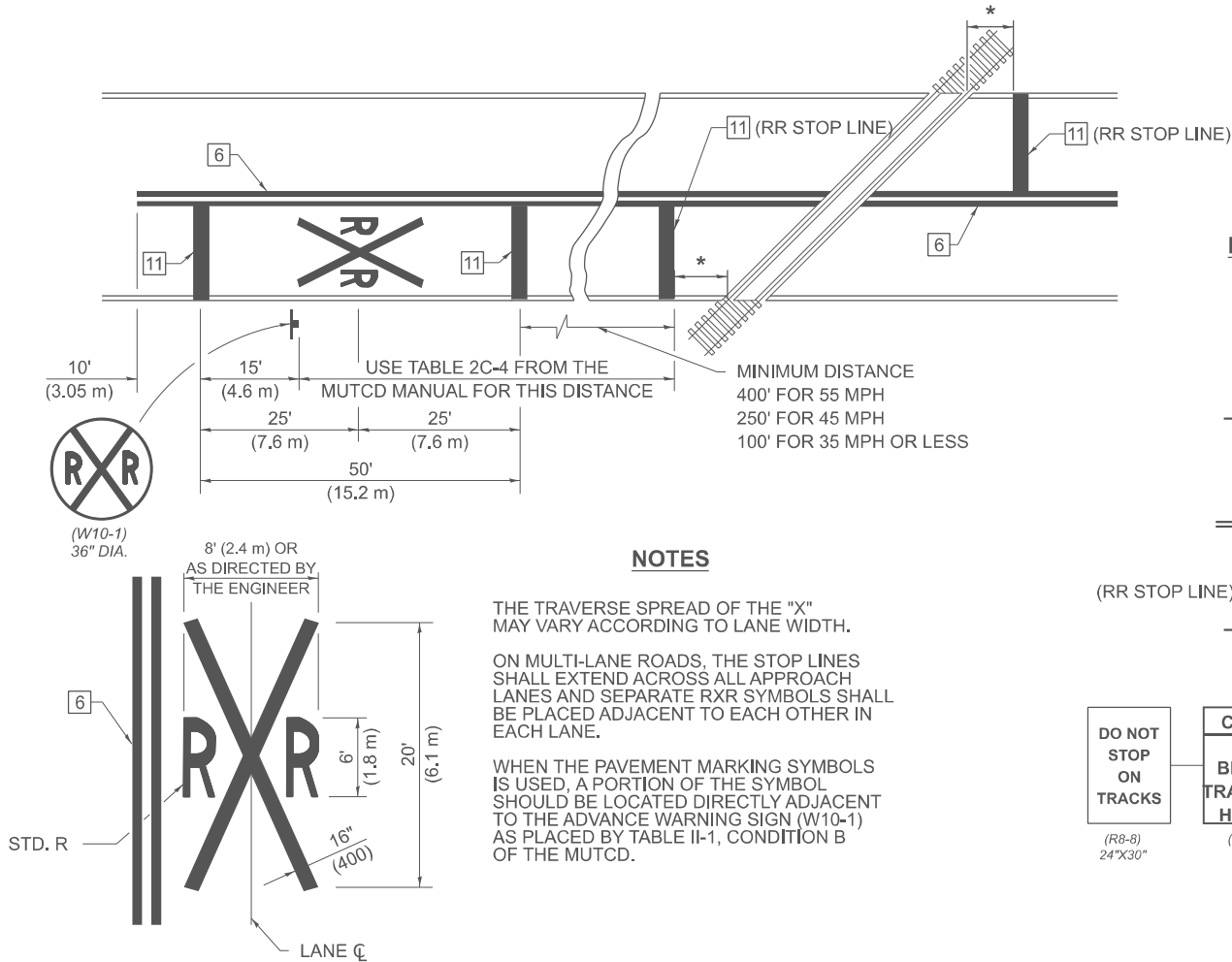
PAVEMENT MARKING AND RAISED REFLECTIVE PAVEMENT MARKERS  
(RURAL & URBAN APPLICATIONS)

SCALE: SHEET 3 OF 4 SHEETS STA. TO STA.

USER NAME = Travis.Walk	DESIGNED - J. Bloemer	REVISED -
	DRAWN - J. Bloemer	REVISED -
	CHECKED -	REVISED -
PLOT DATE = 1/27/2025	DATE -	REVISED -

SUPPLEMENTAL PAVEMENT MARKING TREATMENT FOR RAILROAD-HIGHWAY GRADE CROSSING

PAVEMENT MARKINGS AT RAILROAD-HIGHWAY GRADE CROSSING



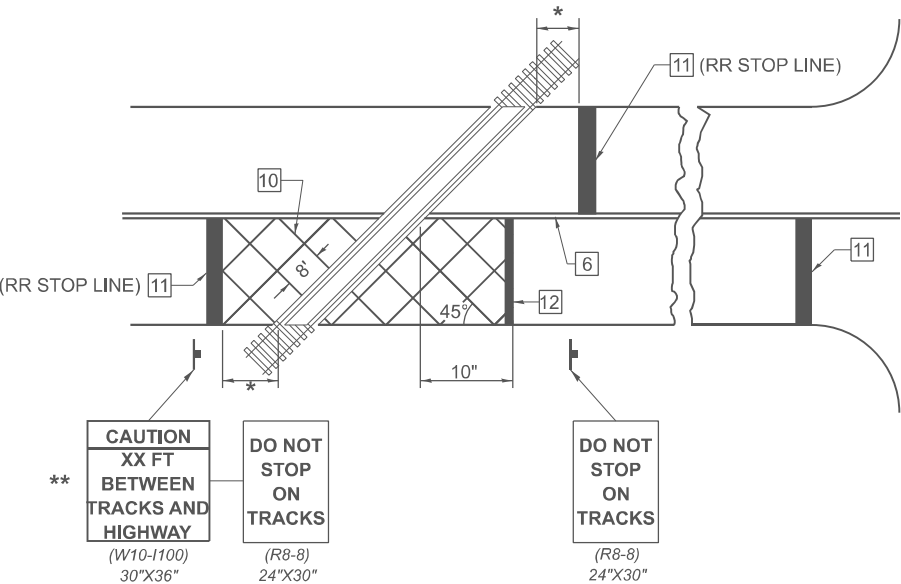
NOTES

THE TRAVERSE SPREAD OF THE "X" MAY VARY ACCORDING TO LANE WIDTH.

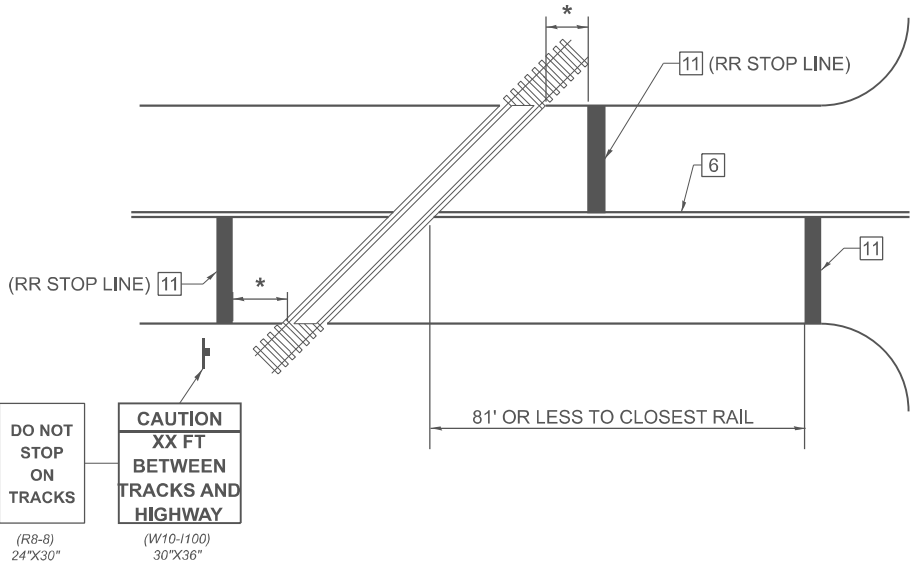
ON MULTI-LANE ROADS, THE STOP LINES SHALL EXTEND ACROSS ALL APPROACH LANES AND SEPARATE RXR SYMBOLS SHALL BE PLACED ADJACENT TO EACH OTHER IN EACH LANE.

WHEN THE PAVEMENT MARKING SYMBOLS IS USED, A PORTION OF THE SYMBOL SHOULD BE LOCATED DIRECTLY ADJACENT TO THE ADVANCE WARNING SIGN (W10-1) AS PLACED BY TABLE II-1, CONDITION B OF THE MUTCD.

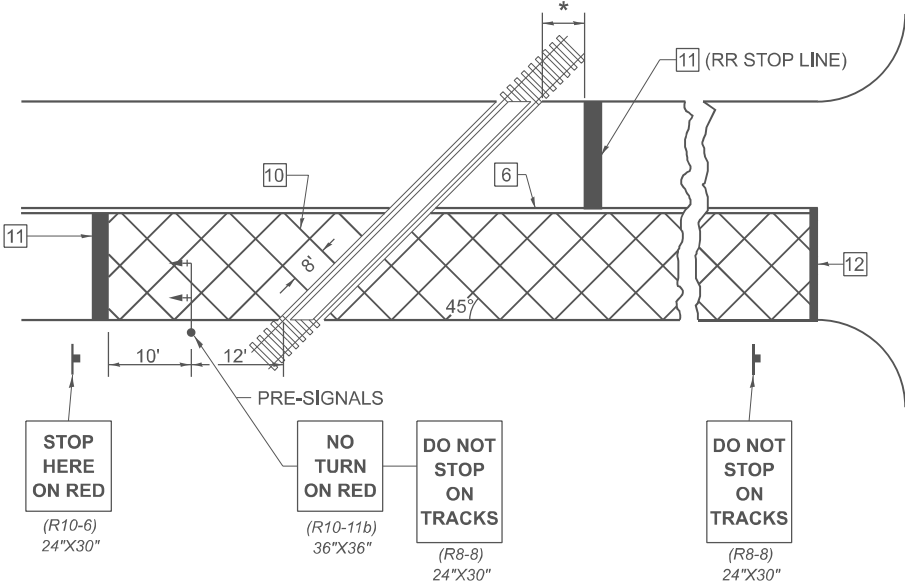
RAILROAD CROSSING WITH INTERCONNECT ONLY



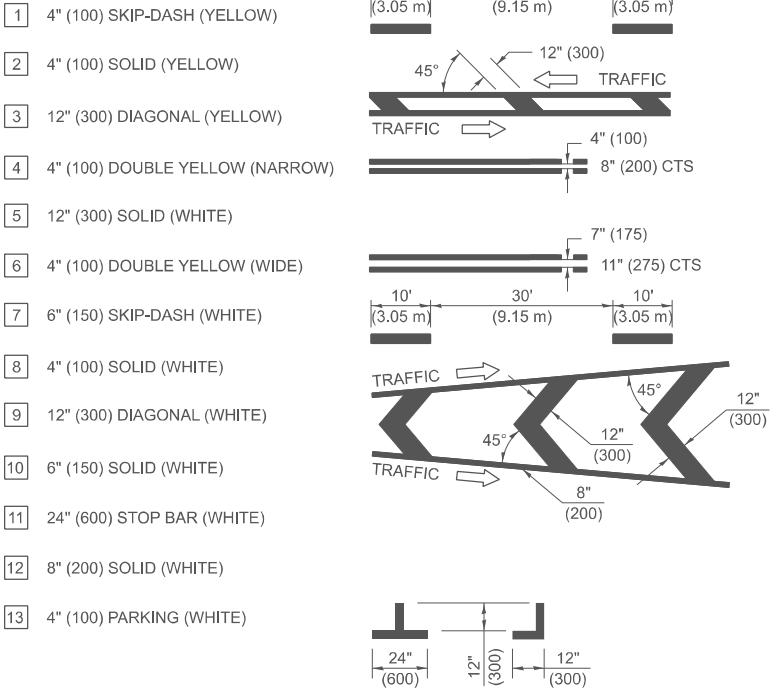
RAILROAD CROSSING WITH NON-SIGNALIZED INTERSECTION



RAILROAD CROSSING WITH INTERCONNECT AND PRE-SIGNALS

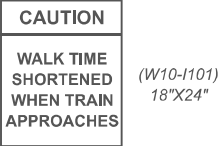


PAVEMENT MARKING LEGEND



GENERAL NOTES

- SUPPLEMENTAL PAVEMENT MARKINGS TO BE INSTALLED ONLY ON APPROACHES TO INTERSECTIONS CONTROLLED BY TRAFFIC SIGNALS WHICH ARE INTERCONNECTED WITH THE RAILROAD WARNING SIGNALS.
- EXTEND PAVEMENT MARKINGS TO THE INTERSECTION ONLY WHERE PRE-SIGNALS ARE USED.
- WHEN PEDESTRIAN SIGNALS ARE PRESENT WITH INTERCONNECTED SIGNALS, WARNING SIGN W10-1101 (18\"/>



- \* 15' FROM NEAR RAIL OR 8' FROM AND PARALLEL TO GATE IF PRESENT
- \*\* WARNING SIGN W10-1100 SHALL BE USED AS AN INTERIM MEASURE AT INTERCONNECTED SIGNAL LOCATIONS WHERE PRE-SIGNALS ARE TO BE INSTALLED IN THE FUTURE. THIS SIGN SHALL BE REMOVED WHEN THE PRE-SIGNALS ARE INSTALLED AND THE PAVEMENT MARKINGS ARE EXTENDED TO THE INTERSECTION.

NOT TO SCALE  
Note: All dimensions are in INCHES (millimeters) unless otherwise shown.

DISTRICT 7 DETAIL NO. 78000001

F.A.* RTE.	SECTION	COUNTY	TOTAL SHEETS	SHEET NO.
	D7 CAPE SEAL 2025-1	CUMBERLAND	12	12
CONTRACT NO. 74C50				
ILLINOIS FED. AID PROJECT				

\* F.A.P. 824 & F.A.S. 1652

STATE OF ILLINOIS  
DEPARTMENT OF TRANSPORTATION

PAVEMENT MARKING AND RAISED REFLECTIVE PAVEMENT MARKERS  
(RURAL & URBAN APPLICATIONS)

SCALE: SHEET 4 OF 4 SHEETS STA. TO STA.

USER NAME = Travis.Walk	DESIGNED - J. Bloemer	REVISED -
	DRAWN - J. Bloemer	REVISED -
	CHECKED -	REVISED -
PLOT DATE = 1/27/2025	DATE -	REVISED -

MODEL: Details-4 [Sheet]  
FILE NAME: c:\p\work\pav\illinois.gov\jared.bloemer\0911138\0774C50-sht-details.dgn