

MODEL: SQ002 [Sheet]
FILE NAME: c:\pva_work\dwg\tdh\hassan\1\08022-shi-SQ0.dgn

SUMMARY OF QUANTITIES					TYPE CODE					
					URBAN	URBAN	URBAN	URBAN	URBAN	URBAN
					ROADWAY	ROADWAY	SIGNAL			
100% STATE										
Code No.	Item	Unit	Total Quantity		0005	0005	0021			
* 72400735	REMOVE AND RELOCATE SIGN PANEL - TYPE 1	SQ FT	8		8	0	0			
* 78000400	THERMOPLASTIC PAVEMENT MARKING - LINE 6"	FOOT	7046		7046	0	0			
* 78000600	THERMOPLASTIC PAVEMENT MARKING - LINE 12"	FOOT	216		216	0	0			
* 78000650	THERMOPLASTIC PAVEMENT MARKING - LINE 24"	FOOT	1592		1592	0	0			
* 78300202	PAVEMENT MARKING REMOVAL - WATER BLASTING	SQ FT	893		893	0	0			
* 81028200	UNDERGROUND CONDUIT, GALVANIZED STEEL, 2" DIA.	FOOT	470		0	0	470			
* 85000200	MAINTENANCE OF EXISTING TRAFFIC SIGNAL INSTALLATION	EACH	7		0	0	7			
* 87301125	ELECTRIC CABLE IN CONDUIT, SIGNAL NO. 12 3C	FOOT	850		0	0	850			
* 87301215	ELECTRIC CABLE IN CONDUIT, SIGNAL NO. 14 2C	FOOT	3230		0	0	3230			1
* 87301900	ELECTRIC CABLE IN CONDUIT, EQUIPMENT GROUNDING CONDUCTOR, NO. 6 1C	FOOT	731		0	0	731			
* 87800100	CONCRETE FOUNDATION, TYPE A	FOOT	4		0	0	4			
* 87900200	DRILL EXISTING HANDHOLE	EACH	28		0	0	28			1
* 88102717	PEDESTRIAN SIGNAL HEAD, LED, 1-FACE, BRACKET MOUNTED WITH COUNTDOWN TIMER	EACH	6		0	0	6			
88600100	DETECTOR LOOP, TYPE I	FOOT	700		0	0	700			
* 89501150	RELOCATE EXISTING TRAFFIC SIGNAL POST	EACH	1		0	0	1			
89502210	MODIFY EXISTING CONTROLLER CABINET	EACH	7		0	0	7			
* 89502300	REMOVE ELECTRIC CABLE FROM CONDUIT	FOOT	450		0	0	450			1
* 89502350	REMOVE AND REINSTALL ELECTRIC CABLE FROM CONDUIT	FOOT	430		0	0	430			
* 89502375	REMOVE EXISTING TRAFFIC SIGNAL EQUIPMENT	EACH	7		0	0	7			
* 89502376	REBUILD EXISTING HANDHOLE	EACH	9		0	0	9			1
X0320050	CONSTRUCTION LAYOUT (SPECIAL)	L SUM	1		1	0	0			
X0327611	REMOVE AND REINSTALL BRICK PAVER	SQ FT	12		12	0	0			

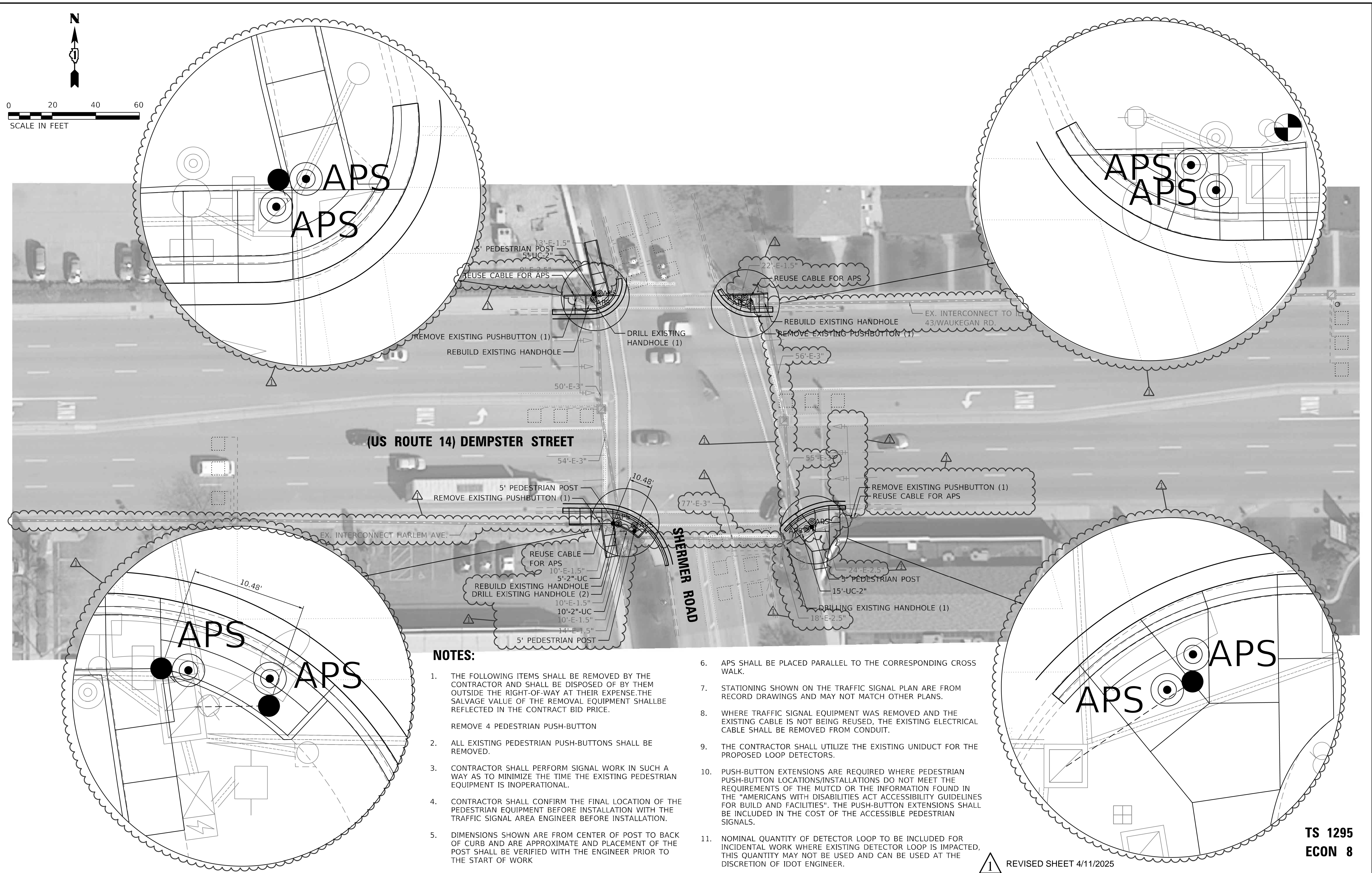
* SPECIALTY ITEM △ NON-PARTICIPATING ITEMS

SUMMARY OF QUANTITIES					TYPE CODE					
					URBAN	URBAN	URBAN	URBAN	URBAN	URBAN
					ROADWAY	ROADWAY	SIGNAL			
100% STATE										
Code No.	Item	Unit	Total Quantity		0005	0005	0021			
* X1400367	PEDESTRIAN SIGNAL POST, 10 FT.	EACH	2		0	0	2			1
* X1400378	PEDESTRIAN SIGNAL POST, 5 FT.	EACH	26		0	0	26			
X4400082	TEMPORARY INFORMATION SIGNING	SQ FT	359.8		359.8	0	0			
X4400501	COMBINATION CURB AND GUTTER REMOVAL AND REPLACEMENT LESS THAN OR EQUAL TO 10 FEET	FOOT	48		48	0	0			
△ X4400503	COMBINATION CURB AND GUTTER REMOVAL AND REPLACEMENT GREATER THAN 10 FEET	FOOT	2498		2498	0	0			
X5537800	STORM SEWERS TO BE CLEANED 12"	FOOT	800		0	800	0			
X6700407	ENGINEER'S FIELD OFFICE, TYPEA (D1)	CAL MO	12		12	0	0			
* X8760200	ACCESSIBLE PEDESTRIAN SIGNALS	EACH	50		0	0	50			1
* X8780012	CONCRETE FOUNDATION, TYPE A 12-INCH DIAMETER	FOOT	112		0	0	112			
△ Z0018500	DRAINAGE STRUCTURES TO BE CLEANED	EACH	13		0	13	0			
* Z0033044	RE-OPTIMIZE TRAFFIC SIGNAL SYSTEM LEVEL 1	EACH	7		0	0	7			
Ø Z0076604	TRAINEES TRAINING PROGRAM GRADUATE	HOUR	500		500					

△ REVISED SHEET 4/11/2025

Ø 0042

USER NAME = naveed.hassan				DESIGNED -	REVISED -	STATE OF ILLINOIS DEPARTMENT OF TRANSPORTATION		SUMMARY OF QUANTITIES VARIOUS AT VARIOUS			F.A.* RTE.	SECTION	COUNTY	TOTAL SHEETS	SHEET NO.
DRAWN -				REVISD -	REVISED -						VAR	2021-181-SW	COOK	124	4
PLOT SCALE = \$\$CALE\$				CHECKED -	REVISED -						CONTRACT NO. 62R02				
PLOT DATE = 1/30/2025				DATE -	REVISED -						ILLINOIS FED. AID PROJECT				
SCALE:		SHEET 2		OF 2		SHEETS		STA.		TO STA.					



NOTES:

1. THE FOLLOWING ITEMS SHALL BE REMOVED BY THE CONTRACTOR AND SHALL BE DISPOSED OF BY THEM OUTSIDE THE RIGHT-OF-WAY AT THEIR EXPENSE.THE SALVAGE VALUE OF THE REMOVAL EQUIPMENT SHALLBE REFLECTED IN THE CONTRACT BID PRICE.

REMOVE 4 PEDESTRIAN PUSH-BUTTON
2. ALL EXISTING PEDESTRIAN PUSH-BUTTONS SHALL BE REMOVED.
3. CONTRACTOR SHALL PERFORM SIGNAL WORK IN SUCH A WAY AS TO MINIMIZE THE TIME THE EXISTING PEDESTRIAN EQUIPMENT IS INOPERATIONAL.
4. CONTRACTOR SHALL CONFIRM THE FINAL LOCATION OF THE PEDESTRIAN EQUIPMENT BEFORE INSTALLATION WITH THE TRAFFIC SIGNAL AREA ENGINEER BEFORE INSTALLATION.
5. DIMENSIONS SHOWN ARE FROM CENTER OF POST TO BACK OF CURB AND ARE APPROXIMATE AND PLACEMENT OF THE POST SHALL BE VERIFIED WITH THE ENGINEER PRIOR TO THE START OF WORK
6. APS SHALL BE PLACED PARALLEL TO THE CORRESPONDING CROSS WALK.
7. STATIONING SHOWN ON THE TRAFFIC SIGNAL PLAN ARE FROM RECORD DRAWINGS AND MAY NOT MATCH OTHER PLANS.
8. WHERE TRAFFIC SIGNAL EQUIPMENT WAS REMOVED AND THE EXISTING CABLE IS NOT BEING REUSED, THE EXISTING ELECTRICAL CABLE SHALL BE REMOVED FROM CONDUIT.
9. THE CONTRACTOR SHALL UTILIZE THE EXISTING UNIDUCT FOR THE PROPOSED LOOP DETECTORS.
10. PUSH-BUTTON EXTENSIONS ARE REQUIRED WHERE PEDESTRIAN PUSH-BUTTON LOCATIONS/INSTALLATIONS DO NOT MEET THE REQUIREMENTS OF THE MUTCD OR THE INFORMATION FOUND IN THE "AMERICANS WITH DISABILITIES ACT ACCESSIBILITY GUIDELINES FOR BUILD AND FACILITIES". THE PUSH-BUTTON EXTENSIONS SHALL BE INCLUDED IN THE COST OF THE ACCESSIBLE PEDESTRIAN SIGNALS.
11. NOMINAL QUANTITY OF DETECTOR LOOP TO BE INCLUDED FOR INCIDENTAL WORK WHERE EXISTING DETECTOR LOOP IS IMPACTED, THIS QUANTITY MAY NOT BE USED AND CAN BE USED AT THE DISCRETION OF IDOT ENGINEER.

 REVISED SHEET 4/11/2025

**TS 1295
ECON 8**

MODEL: US 14 at Shermer [Sheet]
FILE NAME: c:\pawork\pawork\hassan\0905396D108022-shr-TS.dgn

PLOT DATE	USER NAME	DESIGNED	REVISED
	naveed.hassan	-	-
	DRAWN	-	-
	CHECKED	-	-
DATE	3/19/2025	-	-
	-	-	-

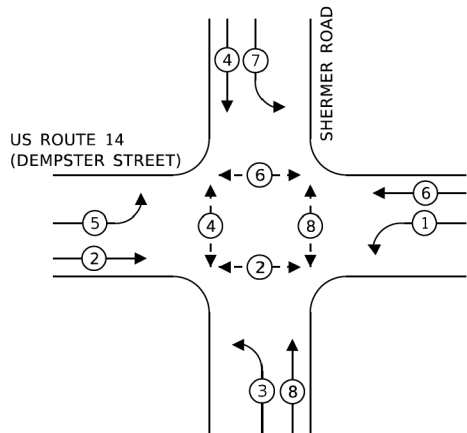
**STATE OF ILLINOIS
DEPARTMENT OF TRANSPORTATION**

**TRAFFIC SIGNAL PLAN
(US ROUTE 14) DEMPSTER STREET AT SHERMER ROAD**

F.A.* RTE.	SECTION	COUNTY	TOTAL SHEETS	SHEET NO.
VAR	2021-181-SW	COOK	124	104
CONTRACT NO. 62R02				
ILLINOIS FED. AID PROJECT				

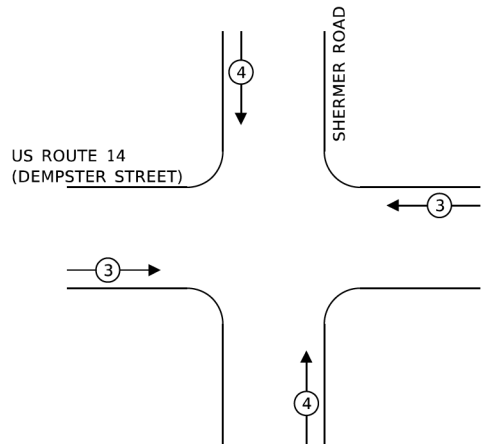
SCALE: SHEET 9 OF 22 SHEETS STA. TO STA.

EXISTING CONTROLLER SEQUENCE



EXISTING PHASE DESIGNATION DIAGRAM

EXISTING EMERGENCY VEHICLE PREEMPTION SEQUENCE



TRAFFIC SIGNAL ELECTRICAL SERVICE REQUIREMENTS

TYPE	NO. OF LAMPS	LED WATTAGE	% OPERATION	TOTAL WATTAGE
SIGNAL (RED)	14	11	50	77
(YELLOW)	14	20	5	14
(GREEN)	14	12	45	75.6
PERMISSIVE ARROW	16	10	10	16
PED. SIGNAL	8	20	100	160
CONTROLLER	1	100	100	100
UPS	1	25	100	25
VIDEO SYSTEM	-	-	-	-
BLANK-OUT SIGN	-	-	-	-
FLASHER	-	-	-	-
STREET NAME SIGN	-	-	-	-
LUMINAIRE	-	-	-	-
TOTAL =				467.6

ENERGY COSTS TO:

ILLINOIS DEPARTMENT OF TRANSPORTATION

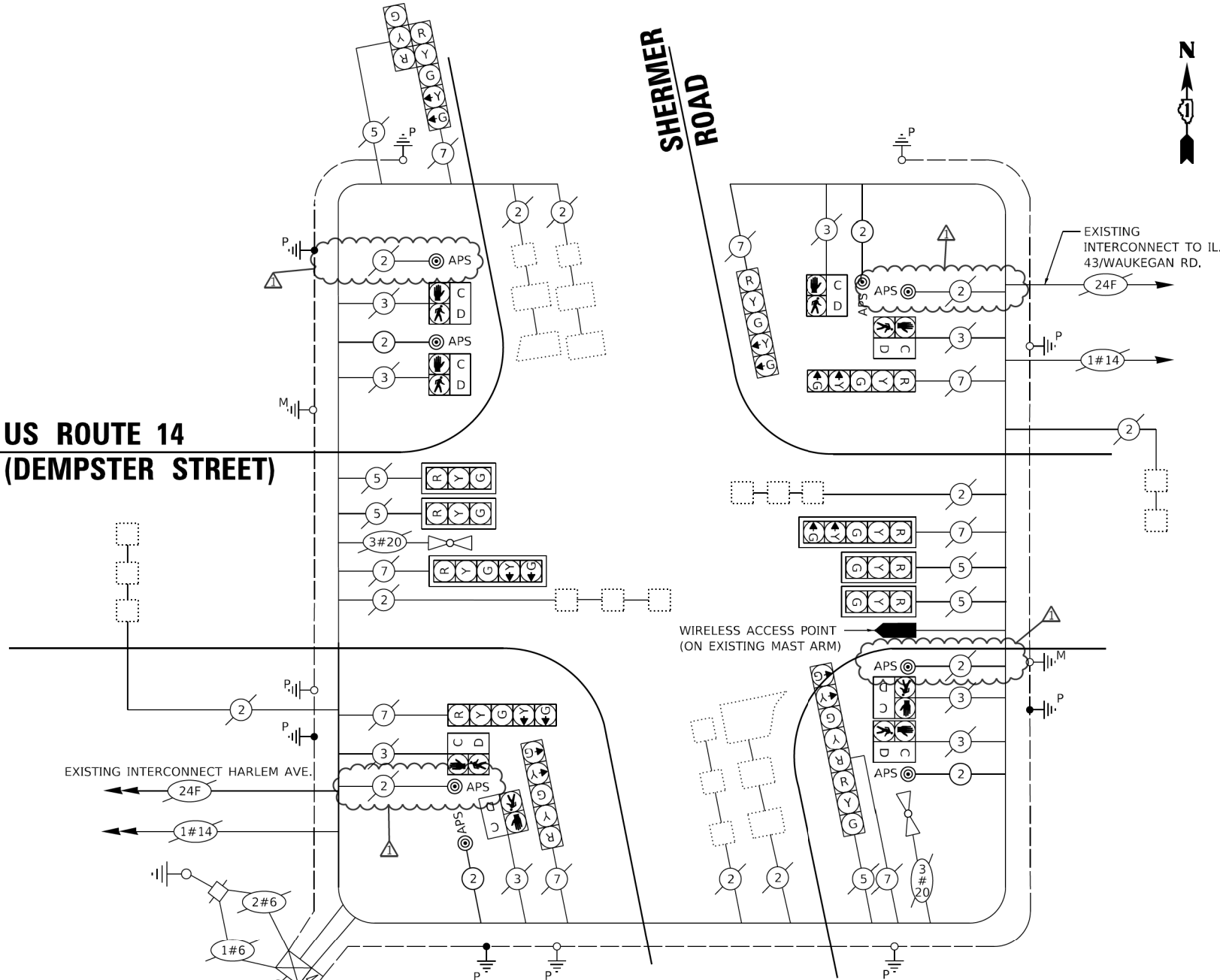
201 WEST CENTER COURT
SHAUMBURG, IL 60196-1096

ENERGY SUPPLY: CONTACT: LARRY SHANK
PHONE: 847-291-3214
COMPANY: COMMONWEALTH EDISON
ACCOUNT NUMBER: ---

SCHEDULE OF QUANTITIES

ITEM DESCRIPTION	UNIT	TOTAL QTY
UNDERGROUND CONDUIT, GALVANIZED STEEL, 2" DIA.	FOOT	35
MAINTENANCE OF EXISTING TRAFFIC SIGNAL INSTALLATION	EACH	1
ELECTRIC CABLE IN CONDUIT, SIGNAL NO. 14 2C	FOOT	580
ELECTRIC CABLE IN CONDUIT, EQUIPMENT GROUNDING CONDUCTOR, NO. 6 1C	FOOT	71
DRILL EXISTING HANDHOLE	EACH	4
DETECTOR LOOP, TYPE 1	FOOT	100
MODIFY EXISTING CONTROLLER CABINET	EACH	1
REMOVE AND REINSTALL ELECTRIC CABLE FROM CONDUIT	FOOT	70
REMOVE EXISTING TRAFFIC SIGNAL EQUIPMENT	EACH	1
REBUILD EXISTING HANDHOLE	EACH	3
PEDESTRIAN SIGNAL POST, 5 FT.	EACH	4
ACCESSIBLE PEDESTRIAN SIGNALS	EACH	8
CONCRETE FOUNDATION, TYPE A 12-INCH DIAMETER	FOOT	16
RE-OPTIMIZE TRAFFIC SIGNAL SYSTEM LEVEL 1	EACH	1

US ROUTE 14 (DEMPSTER STREET)



CABLE PLAN (NOT TO SCALE)

* NOMINAL QUANTITY OF DETECTOR LOOP TO BE INCLUDED FOR INCIDENTAL WORK WHERE EXISTING DETECTOR LOOP IS IMPACTED, THIS QUANTITY MAY NOT BE USED AND CAN BE USED AT THE DISCRETION OF IDOT PROJECT ENGINEER.

TS 1295
ECON 8

1 REVISED SHEET 4/11/2025

STATE OF ILLINOIS
DEPARTMENT OF TRANSPORTATION

CABLE PLAN, PHASE DESIGNATION DIAGRAM,
AND EMERGENCY VEHICLE PREEMPTION SEQUENCE
US ROUTE 14 (DEMPSTER STREET) AT SHERMER ROAD

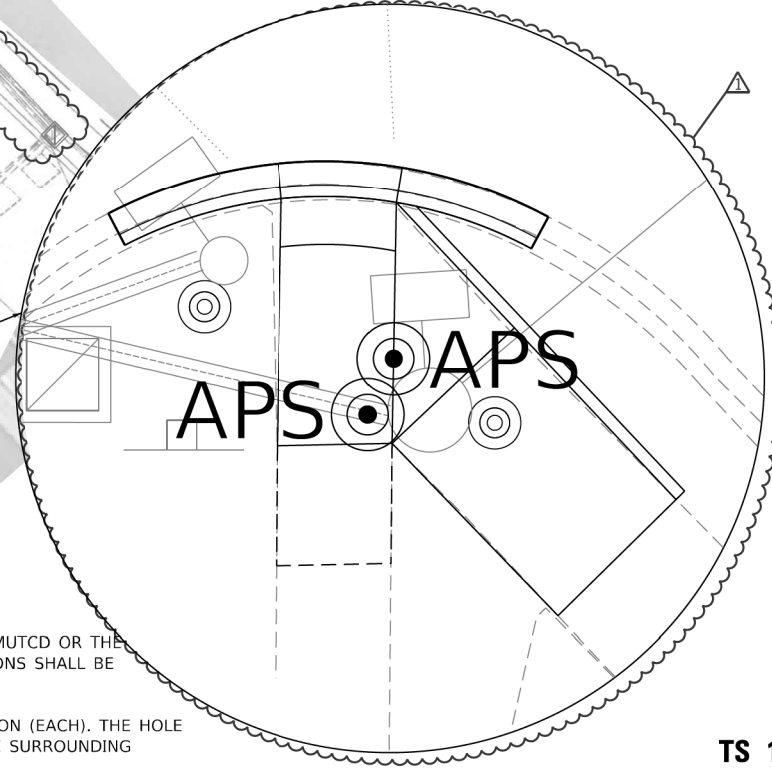
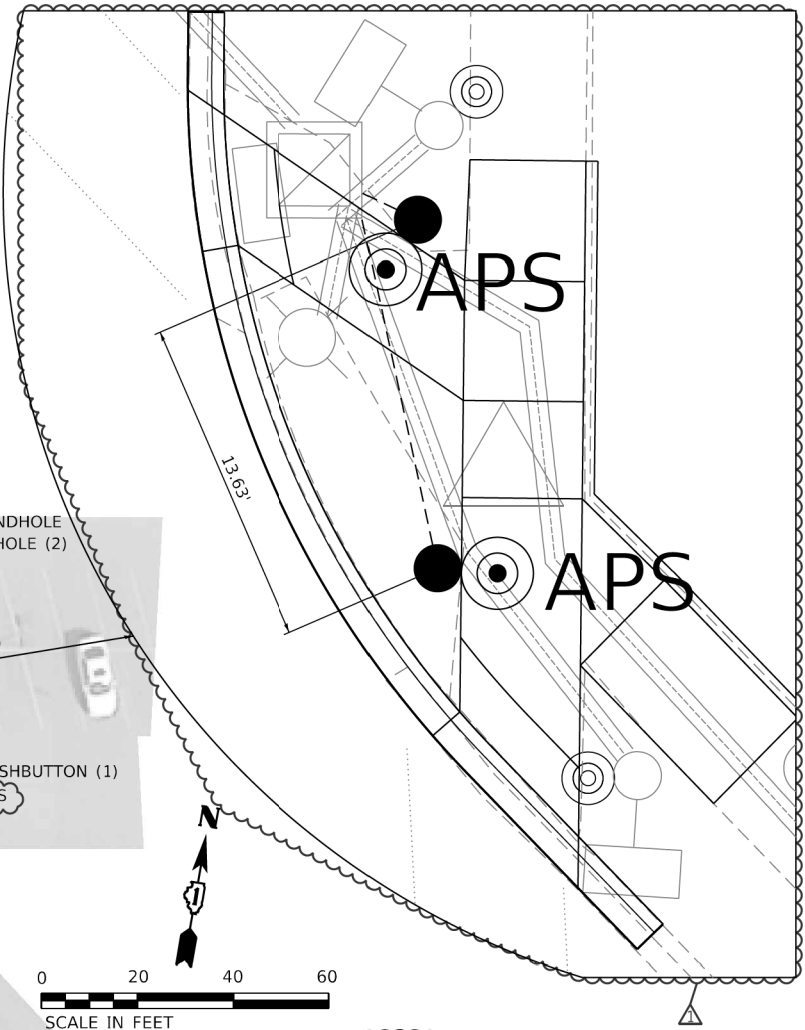
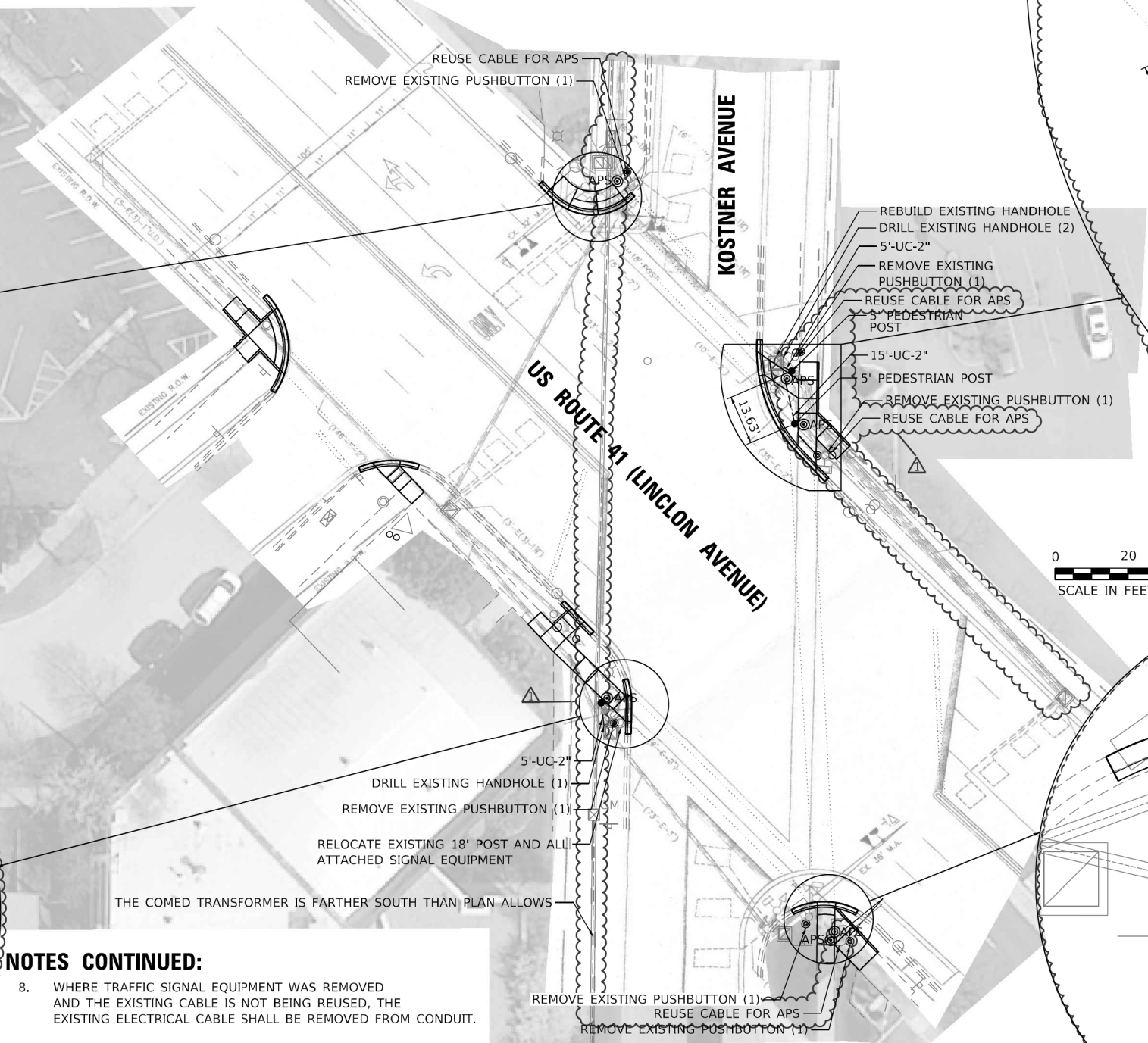
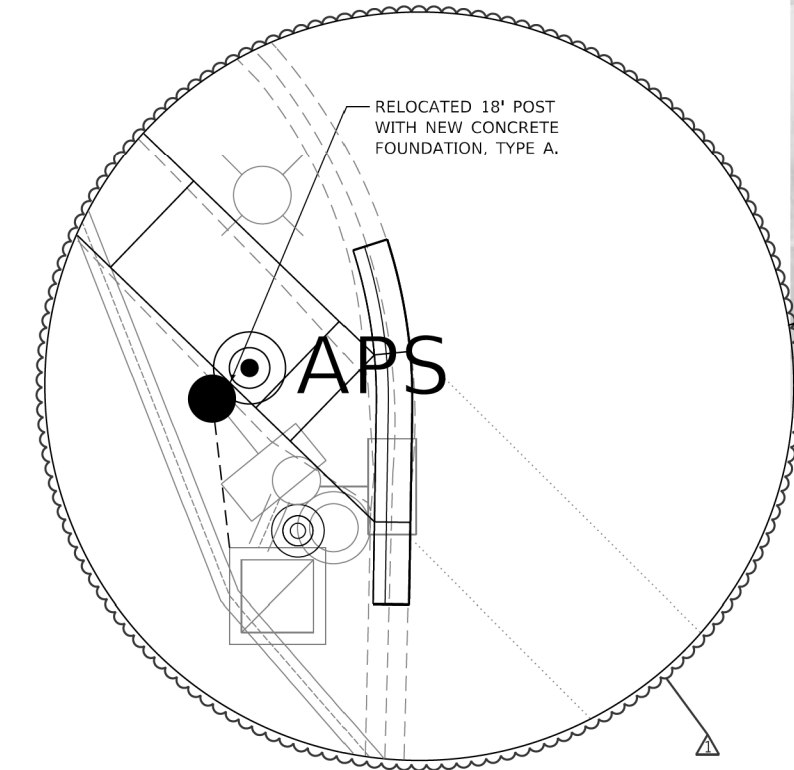
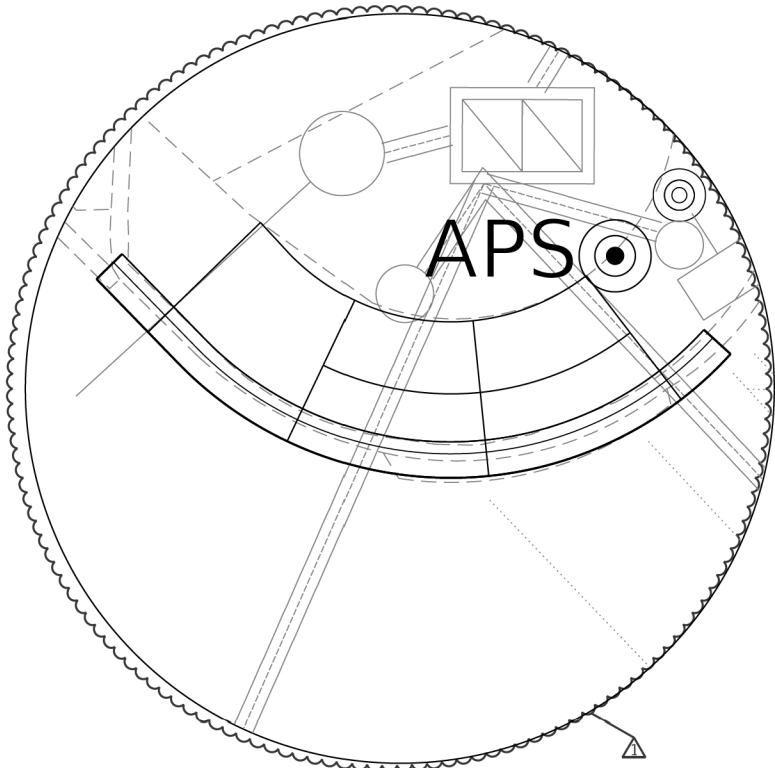
SCALE: SHEET 10 OF 22 SHEETS STA. TO STA.

F.A.* RTE.	SECTION	COUNTY	TOTAL SHEETS	SHEET NO.
VAR	2021-181-SW	COOK	124	105
CONTRACT NO. 62R02				
ILLINOIS FED. AID PROJECT				

NOTES:

1. THE FOLLOWING ITEMS SHALL BE REMOVED BY THE CONTRACTOR AND SHALL BE DISPOSED OF BY THEM OUTSIDE THE RIGHT-OF-WAY AT THEIR EXPENSE.THE SALVAGE VALUE OF THE REMOVAL EQUIPMENT SHALLBE REFLECTED IN THE CONTRACT BID PRICE.
- 6 EACH PEDESTRIAN PUSHBUTTON
2. ALL EXISTING PEDESTRIAN PUSH-BUTTONS SHALL BE REMOVED.
3. CONTRACTOR SHALL PERFORM SIGNAL WORK IN SUCH A WAY AS TO MINIMIZE THE TIME THE EXISTING PEDESTRIAN EQUIPMENT IS INOPERATIONAL.

4. CONTRACTOR SHALL CONFIRM THE FINAL LOCATION OF THE PEDESTRIAN EQUIPMENT BEFORE INSTALLATION WITH THE TRAFFIC SIGNAL AREA ENGINEER BEFORE INSTALLATION.
5. DIMENSIONS SHOWN ARE FROM CENTER OF POST TO BACK OF CURB AND ARE APPROXIMATE AND PLACEMENT OF THE POST SHALL BE VERIFIED WITH THE ENGINEER PRIOR TO THE START OF WORK
6. APS SHALL BE PLACED PARALLEL TO THE CORRESPONDING CROSS WALK.
7. STATIONING SHOWN ON THE TRAFFIC SIGNAL PLAN ARE FROM RECORD DRAWINGS AND MAY NOT MATCH OTHER PLANS.



NOTES CONTINUED:

8. WHERE TRAFFIC SIGNAL EQUIPMENT WAS REMOVED AND THE EXISTING CABLE IS NOT BEING REUSED, THE EXISTING ELECTRICAL CABLE SHALL BE REMOVED FROM CONDUIT.
9. THE CONTRACTOR SHALL UTILIZE THE EXISTING UNIDUCT FOR THE PROPOSED LOOP DETECTORS.
10. PUSH-BUTTON EXTENSIONS ARE REQUIRED WHERE PEDESTRIAN PUSH-BUTTON LOCATIONS/INSTALLATIONS DO NOT MEET THE REQUIREMENTS OF THE MUTCD OR THE INFORMATION FOUND IN THE "AMERICANS WITH DISABILITIES ACT ACCESSIBILITY GUIDELINES FOR BUILD AND FACILITIES". THE PUSH-BUTTON EXTENSIONS SHALL BE INCLUDED IN THE COST OF THE ACCESSIBLE PEDESTRIAN SIGNALS.
11. THE CONTRACTOR SHALL REMOVE THE EXISTING POST FOUNDATION IN ITS ENTIRETY, PAID FOR AS 89502385 REMOVE EXISTING CONCRETE FOUNDATION (EACH). THE HOLE SHALL BE BACKFILLED WITH SUITABLE MATERIAL APPROVED BY THE ENGINEER. THE SURFACE OF THE FILLED HOLE SHALL BE TREATED TO MATCH THE SURROUNDING AREA. ALL BACKFILL MATERIAL, LABOR AND EQUIPMENT TO RESTORE THE SITE SHALL BE INCLUDED IN THE COST OF THE FOUNDATION REMOVAL.
12. NOMINAL QUANTITY OF DETECTOR LOOP TO BE INCLUDED FOR INCIDENTAL WORK WHERE EXISTING DETECTOR LOOP IS IMPACTED, THIS QUANTITY MAY NOT BE USED AND CAN BE USED AT THE DISCRETION OF IDOT PROJECT ENGINEER.

MODEL: US 41 at Kostner-1 (Sheet)
FILE NAME: c:\pw_work\pwl\hassan\m0905386D108022-shr-TS.dgn

USER NAME	= naveed.hassan	DESIGNED	-	REVISED	-	03/17/2025
		DRAWN	-	REVISED	-	
		CHECKED	-	REVISED	-	
PLOT DATE	= 3/19/2025	DATE	-	REVISED	-	

STATE OF ILLINOIS
DEPARTMENT OF TRANSPORTATION

TRAFFIC SIGNAL PLAN
US ROUTE 41 (LINCOLN AVENUE) AT KOSTNER AVENUE

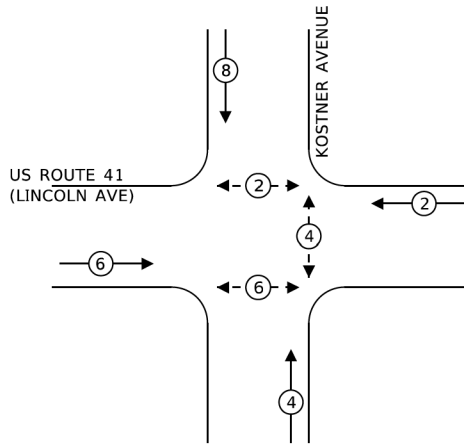
SCALE: SHEET 11 OF 22 SHEETS STA. TO STA.

F.A.* RTE.	SECTION	COUNTY	TOTAL SHEETS	SHEET NO.
VAR	2021-181-SW	COOK	124	106
CONTRACT NO. 62R02				
ILLINOIS FED. AID PROJECT				

TS 1545
EAGLE IL

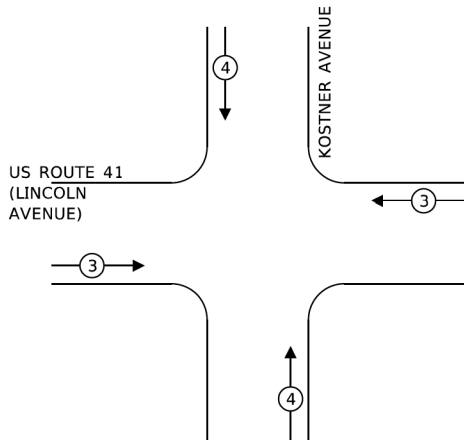
REVISED SHEET 4/11/2025

EXISTING CONTROLLER SEQUENCE



EXISTING PHASE DESIGNATION DIAGRAM

EXISTING EMERGENCY VEHICLE PREEMPTION SEQUENCE



TRAFFIC SIGNAL ELECTRICAL SERVICE REQUIREMENTS

TYPE	NO. OF LAMPS	LED WATTAGE	% OPERATION	TOTAL WATTAGE
SIGNAL (RED)	14	11	50	77
(YELLOW)	14	20	5	14
(GREEN)	14	12	45	75.6
PERMISSIVE ARROW	-	10	10	-
PED. SIGNAL	6	20	100	120
CONTROLLER	1	100	100	100
UPS	1	25	100	25
VIDEO SYSTEM	-	115	100	-
BLANK-OUT SIGN	-	25	5	-
FLASHER	-	-	50	-
STREET NAME SIGN	-	120	50	-
LUMINAIRE	-	285	50	-
TOTAL =				411.6

ENERGY COSTS TO:

VILLAGE OF LINCOLNNWOOD

6900 N LINCOLN
LINCOLNNWOOD, IL 60712

ENERGY SUPPLY: CONTACT: NAME
PHONE: TELEPHONE
COMPANY: COMMONWEALTH EDISON
ACCOUNT NUMBER: ---

SCHEDULE OF QUANTITIES

ITEM DESCRIPTION	UNIT	TOTAL QTY
UNDERGROUND CONDUIT, GALVANIZED STEEL, 2" DIA.	FOOT	25
MAINTENANCE OF EXISTING TRAFFIC SIGNAL INSTALLATION	EACH	1
ELECTRIC CABLE IN CONDUIT, EQUIPMENT GROUNDING CONDUCTOR, NO. 6 1C	FOOT	52
DRILL EXISTING HANDHOLE	EACH	3
DETECTOR LOOP, TYPE I	FOOT	100
MODIFY EXISTING CONTROLLER CABINET	EACH	1
REMOVE AND REINSTALL ELECTRIC CABLE FROM CONDUIT	FOOT	65
REMOVE EXISTING TRAFFIC SIGNAL EQUIPMENT	EACH	1
REBUILD EXISTING HANDHOLE	EACH	1
PEDESTRIAN SIGNAL POST, 5 FT.	FOOT	3
ACCESSIBLE PEDESTRIAN SIGNALS	EACH	6
CONCRETE FOUNDATION, TYPE A 12-INCH DIAMETER	FOOT	12
RE-OPTIMIZE TRAFFIC SIGNAL SYSTEM LEVEL 1	EACH	1
RELOCATE TRAFFIC SIGNAL POST	EACH	1
CONCRETE FOUNDATION, TYPE A	FOOT	4

STATE OF ILLINOIS
DEPARTMENT OF TRANSPORTATION

CABLE PLAN, PHASE DESIGNATION DIAGRAM,
AND EMERGENCY VEHICLE PREEMPTION SEQUENCE
US ROUTE 41 (LINCOLN AVENUE) AT KOSTNER AVENUE

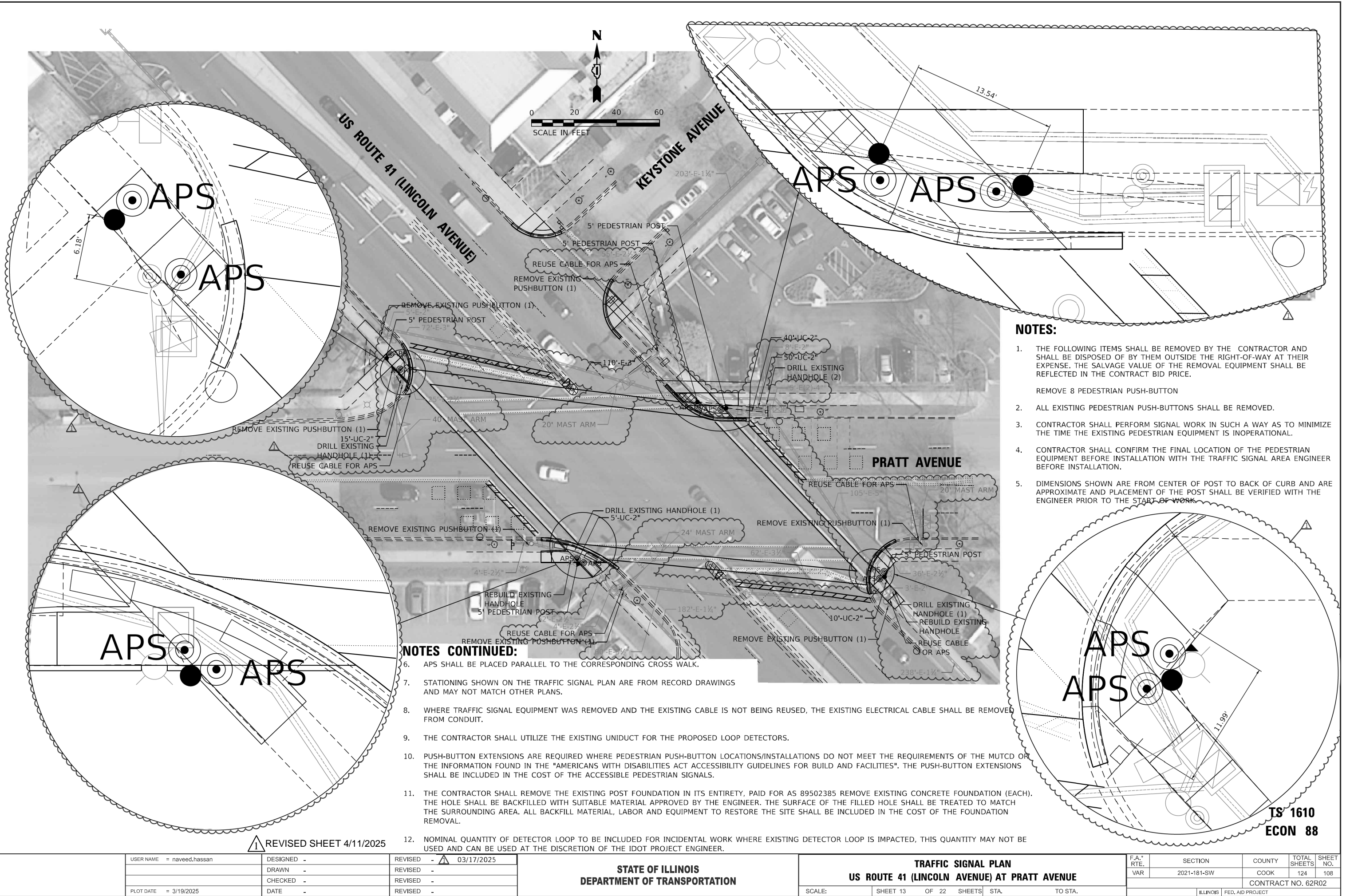
SCALE: SHEET 12 OF 22 SHEETS STA. TO STA.

1 REVISED SHEET 4/11/2025

TS 1545
EAGLE IL

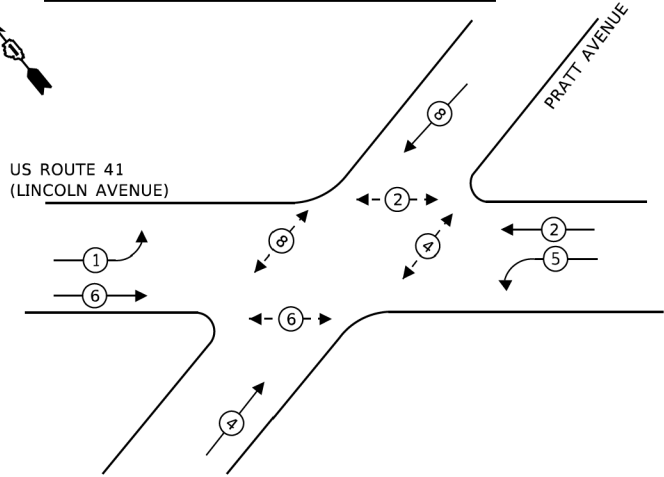
F.A.* RTE.	SECTION	COUNTY	TOTAL SHEETS	SHEET NO.
VAR	2021-181-SW	COOK	124	107
CONTRACT NO. 62R02				
ILLINOIS FED. AID PROJECT				

MODEL: US 41 at Keystone ave-1 (Sheet)
FILE NAME: c:\paw_work\paw\hassan\0905386D108022-shr-TS.dgn



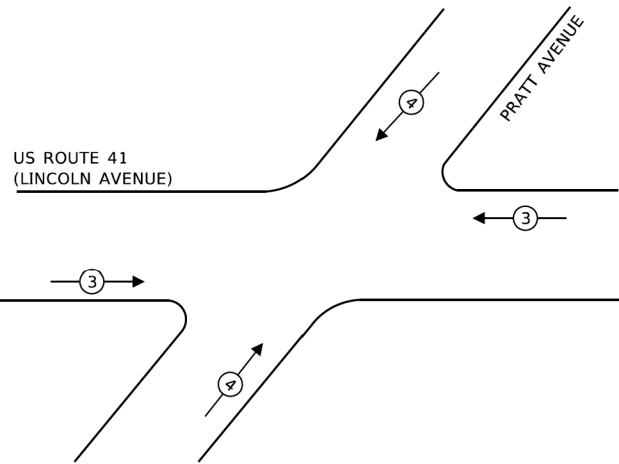
MODEL: US 41 at Keystone ave-2 (Sheet)
FILE NAME: c:\pwworking\hassan\108022-ehc-TS.dgn

EXISTING CONTROLLER SEQUENCE



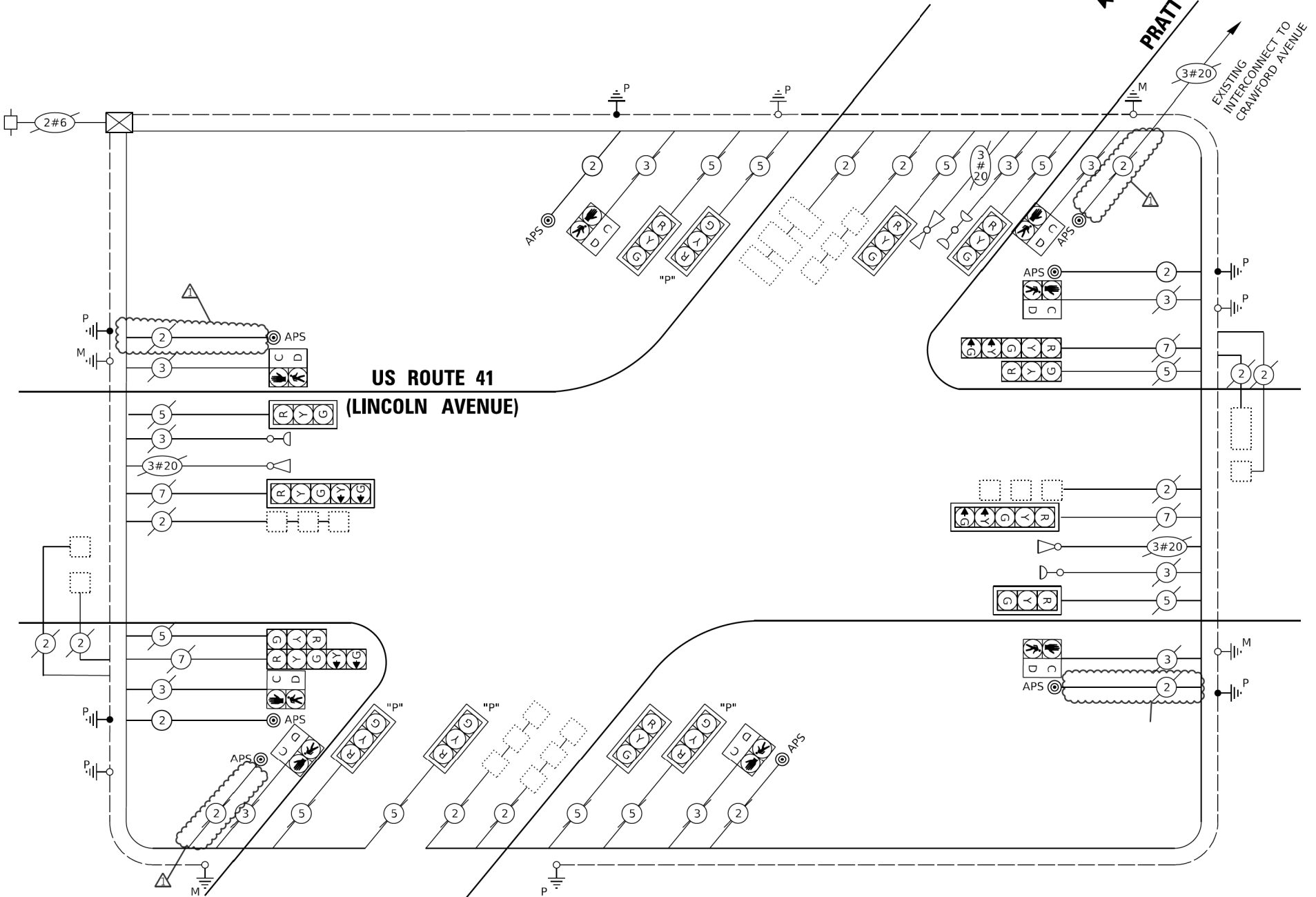
EXISTING PHASE DESIGNATION DIAGRAM

EXISTING EMERGENCY VEHICLE PREEMPTION SEQUENCE



LEGEND:

- PROTECTED PHASE
- PROTECTED/PERMITTED PHASE
- PEDESTRIAN PHASE
- OVERLAP



CABLE PLAN
(NOT TO SCALE)

TRAFFIC SIGNAL ELECTRICAL SERVICE REQUIREMENTS

TYPE	NO. OF LAMPS	LED WATTAGE	% OPERATION	TOTAL WATTAGE
SIGNAL (RED)	16	11	50	88
(YELLOW)	16	20	5	16
(GREEN)	16	12	45	86.4
PERMISSIVE ARROW	8	10	10	8
PED. SIGNAL	8	20	100	160
CONTROLLER	1	100	100	100
UPS	-	25	100	-
VIDEO SYSTEM	-	115	100	-
BLANK-OUT SIGN	-	25	5	-
FLASHER	-	-	50	-
STREET NAME SIGN	-	120	50	-
LUMINAIRE	-	285	50	-
TOTAL =				458.4

ENERGY COSTS TO:

LINCOLNWOOD

6900 N LINCOLN AVE
LINCOLNWOOD, IL 60712

ENERGY SUPPLY: CONTACT: MIKE LYNCH

PHONE: 847-816-5331

COMPANY: COMMONWEALTH EDISON

ACCOUNT NUMBER: ---

SCHEDULE OF QUANTITIES

ITEM DESCRIPTION	UNIT	TOTAL QTY
UNDERGROUND CONDUIT, GALVANIZED STEEL, 2" DIA.	FOOT	120
MAINTENANCE OF EXISTING TRAFFIC SIGNAL INSTALLATION	EACH	1
ELECTRIC CABLE IN CONDUIT, SIGNAL NO. 14 2C	FOOT	680
ELECTRIC CABLE IN CONDUIT, EQUIPMENT GROUNDING CONDUCTOR, NO. 6 1C	FOOT	165
DRILL EXISTING HANDHOLE	EACH	5
DETECTOR LOOP, TYPE I	FOOT	100
MODIFY EXISTING CONTROLLER CABINET	EACH	1
REMOVE AND REINSTALL ELECTRIC CABLE FROM CONDUIT	FOOT	195
REMOVE EXISTING TRAFFIC SIGNAL EQUIPMENT	EACH	1
REBUILD EXISTING HANDHOLE	EACH	2
PEDESTRIAN SIGNAL POST, 5 FT.	EACH	5
ACCESSIBLE PEDESTRIAN SIGNALS	EACH	8
CONCRETE FOUNDATION, TYPE A 12-INCH DIAMETER	FOOT	20
RE-OPTIMIZE TRAFFIC SIGNAL SYSTEM LEVEL 1	EACH	1

* NOMINAL QUANTITY OF DETECTOR LOOP TO BE INCLUDED FOR INCIDENTAL WORK WHERE EXISTING DETECTOR LOOP IS IMPACTED, THIS QUANTITY MAY NOT BE USED AND CAN BE USED AT THE DISCRETION OF IDOT PROJECT ENGINEER.

STATE OF ILLINOIS
DEPARTMENT OF TRANSPORTATION

CABLE PLAN, PHASE DESIGNATION DIAGRAM,
AND EMERGENCY VEHICLE PREEMPTION SEQUENCE
US ROUTE 41 (LINCOLN AVENUE) AT PRATT AVENUE

SCALE: SHEET 14 OF 22 SHEETS STA. TO STA.

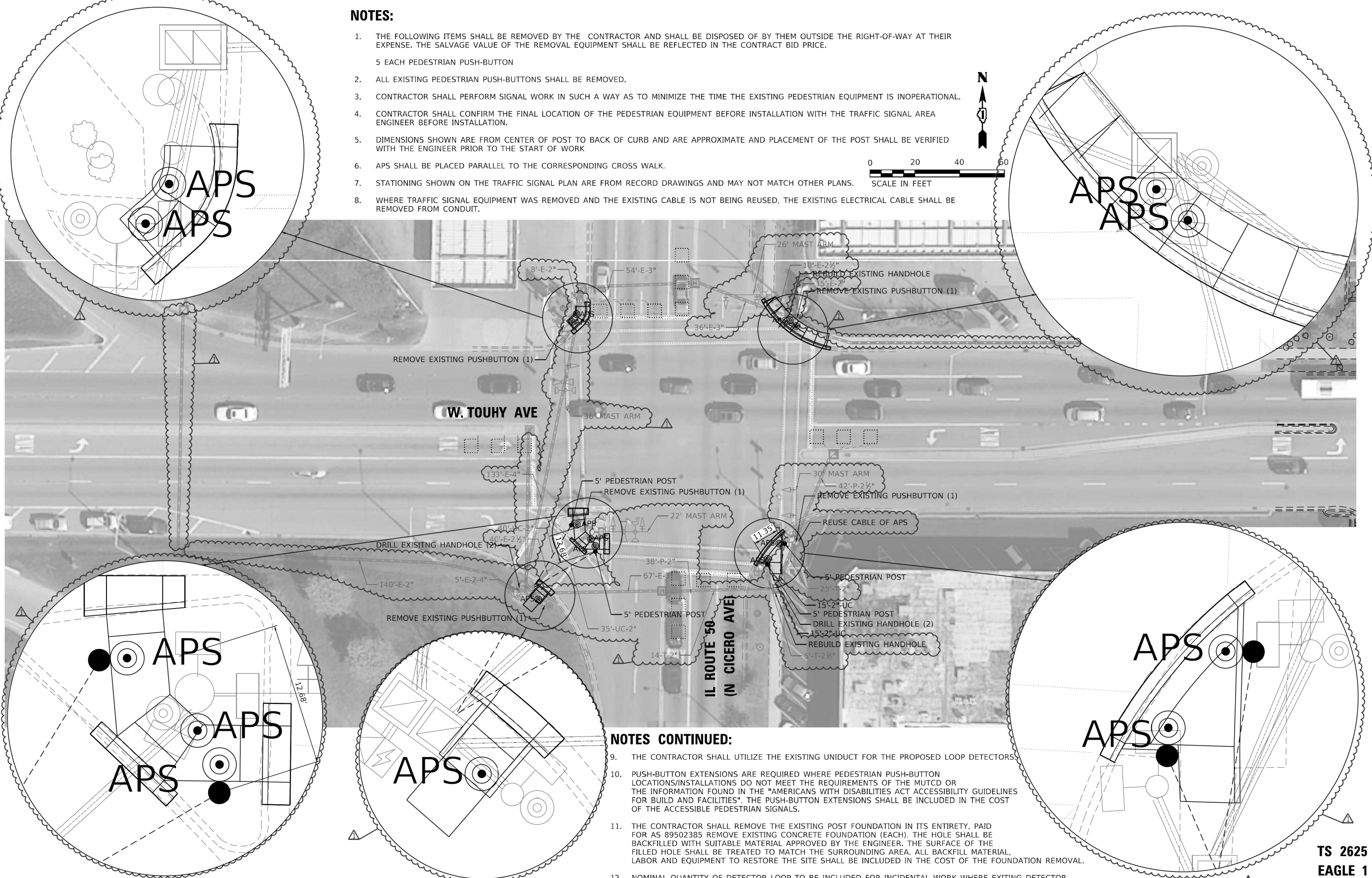
F.A.* RTE.	SECTION	COUNTY	TOTAL SHEETS	SHEET NO.
VAR	2021-181-SW	COOK	124	109
CONTRACT NO. 62R02				
ILLINOIS FED. AID PROJECT				

REVISED SHEET 4/11/2025

TS 1610
ECON 88

NOTES:

1. THE FOLLOWING ITEMS SHALL BE REMOVED BY THE CONTRACTOR AND SHALL BE DISPOSED OF BY THEM OUTSIDE THE RIGHT-OF-WAY AT THEIR EXPENSE. THE SALVAGE VALUE OF THE REMOVAL EQUIPMENT SHALL BE REFLECTED IN THE CONTRACT BID PRICE.
5 EACH PEDESTRIAN PUSH-BUTTON
2. ALL EXISTING PEDESTRIAN PUSH-BUTTONS SHALL BE REMOVED.
3. CONTRACTOR SHALL PERFORM SIGNAL WORK IN SUCH A WAY AS TO MINIMIZE THE TIME THE EXISTING PEDESTRIAN EQUIPMENT IS INOPERATIONAL.
4. CONTRACTOR SHALL CONFIRM THE FINAL LOCATION OF THE PEDESTRIAN EQUIPMENT BEFORE INSTALLATION WITH THE TRAFFIC SIGNAL AREA ENGINEER BEFORE INSTALLATION.
5. DIMENSIONS SHOWN ARE FROM CENTER OF POST TO BACK OF CURB AND ARE APPROXIMATE AND PLACEMENT OF THE POST SHALL BE VERIFIED WITH THE ENGINEER PRIOR TO THE START OF WORK
6. APS SHALL BE PLACED PARALLEL TO THE CORRESPONDING CROSS WALK.
7. STATIONING SHOWN ON THE TRAFFIC SIGNAL PLAN ARE FROM RECORD DRAWINGS AND MAY NOT MATCH OTHER PLANS.
8. WHERE TRAFFIC SIGNAL EQUIPMENT WAS REMOVED AND THE EXISTING CABLE IS NOT BEING REUSED, THE EXISTING ELECTRICAL CABLE SHALL BE REMOVED FROM CONDUIT.



NOTES CONTINUED:

9. THE CONTRACTOR SHALL UTILIZE THE EXISTING UNIDUCT FOR THE PROPOSED LOOP DETECTORS.
10. PUSH-BUTTON EXTENSIONS ARE REQUIRED WHERE PEDESTRIAN PUSH-BUTTON LOCATIONS/INSTALLATIONS DO NOT MEET THE REQUIREMENTS OF THE MUTCD OR THE INFORMATION FOUND IN THE "AMERICANS WITH DISABILITIES ACT ACCESSIBILITY GUIDELINES FOR BUILD AND FACILITIES". THE PUSH-BUTTON EXTENSIONS SHALL BE INCLUDED IN THE COST OF THE ACCESSIBLE PEDESTRIAN SIGNALS.
11. THE CONTRACTOR SHALL REMOVE THE EXISTING POST FOUNDATION IN ITS ENTIRETY, PAID FOR AS 89502385 REMOVE EXISTING CONCRETE FOUNDATION (EACH). THE HOLE SHALL BE BACKFILLED WITH SUITABLE MATERIAL APPROVED BY THE ENGINEER. THE SURFACE OF THE FILLED HOLE SHALL BE TREATED TO MATCH THE SURROUNDING AREA. ALL BACKFILL MATERIAL, LABOR AND EQUIPMENT TO RESTORE THE SITE SHALL BE INCLUDED IN THE COST OF THE FOUNDATION REMOVAL.
12. NOMINAL QUANTITY OF DETECTOR LOOP TO BE INCLUDED FOR INCIDENTAL WORK WHERE EXISTING DETECTOR LOOP IS IMPACTED, THIS QUANTITY MAY NOT BE USED AND CAN BE USED AT THE DISCRETION OF THE IDOT PROJECT ENGINEER.

TS 2625
EAGLE 1

REVISED SHEET 4/11/2025

MODEL: Touhy ave at Cicero-1 (Sheet)
FILE NAME: c:\pwworking\hassanm\0905386D\108022-shr-TS.dgn

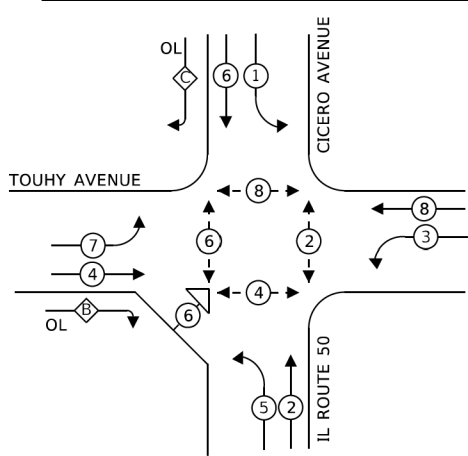
USER NAME	= naveed.hassan	DESIGNED	-	REVISED	-	03/17/2025
		DRAWN	-	REVISED	-	
		CHECKED	-	REVISED	-	
PLOT DATE	= 3/19/2025	DATE	-	REVISED	-	

STATE OF ILLINOIS
DEPARTMENT OF TRANSPORTATION

TRAFFIC SIGNAL PLAN	
IL ROUTE 50 (N CICERO AVENUE) AT W TOUHY AVENUE	
SCALE:	SHEET 15 OF 22 SHEETS STA. TO STA.

F.A.* RTE.	SECTION	COUNTY	TOTAL SHEETS	SHEET NO.
VAR	2021-181-SW	COOK	124	110
CONTRACT NO. 62R02				
ILLINOIS FED. AID PROJECT				

EXISTING CONTROLLER SEQUENCE



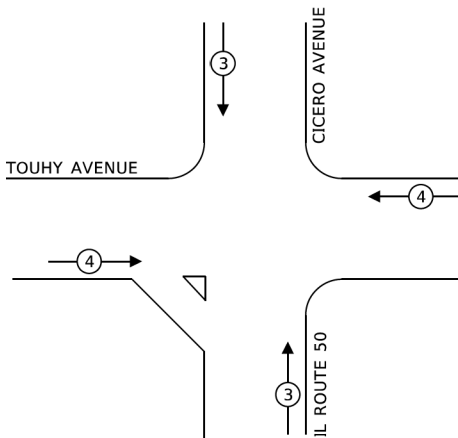
EXISTING PHASE DESIGNATION DIAGRAM

LEGEND:

- PROTECTED PHASE
- PROTECTED/PERMITTED PHASE
- PEDESTRIAN PHASE
- OVERLAP

OVERLAP LETTER	PERMISSIVE PHASE	PROTECTED PHASE
B	= 4	+ 5
C	= 6	+ 7

EXISTING EMERGENCY VEHICLE PREEMPTION SEQUENCE



TRAFFIC SIGNAL ELECTRICAL SERVICE REQUIREMENTS

TYPE	NO. OF LAMPS	LED WATTAGE	% OPERATION	TOTAL WATTAGE
SIGNAL (RED)	16	11	50	88
(YELLOW)	16	20	5	16
(GREEN)	16	12	45	86.4
PERMISSIVE ARROW	24	10	10	24
PED. SIGNAL	10	20	100	200
CONTROLLER	1	100	100	100
UPS	1	25	100	25
VIDEO SYSTEM	-	115	100	-
BLANK-OUT SIGN	-	25	5	-
FLASHER	-	-	20	-
STREET NAME SIGN	-	120	20	-
LUMINAIRE	-	285	0	-
TOTAL =				539.4

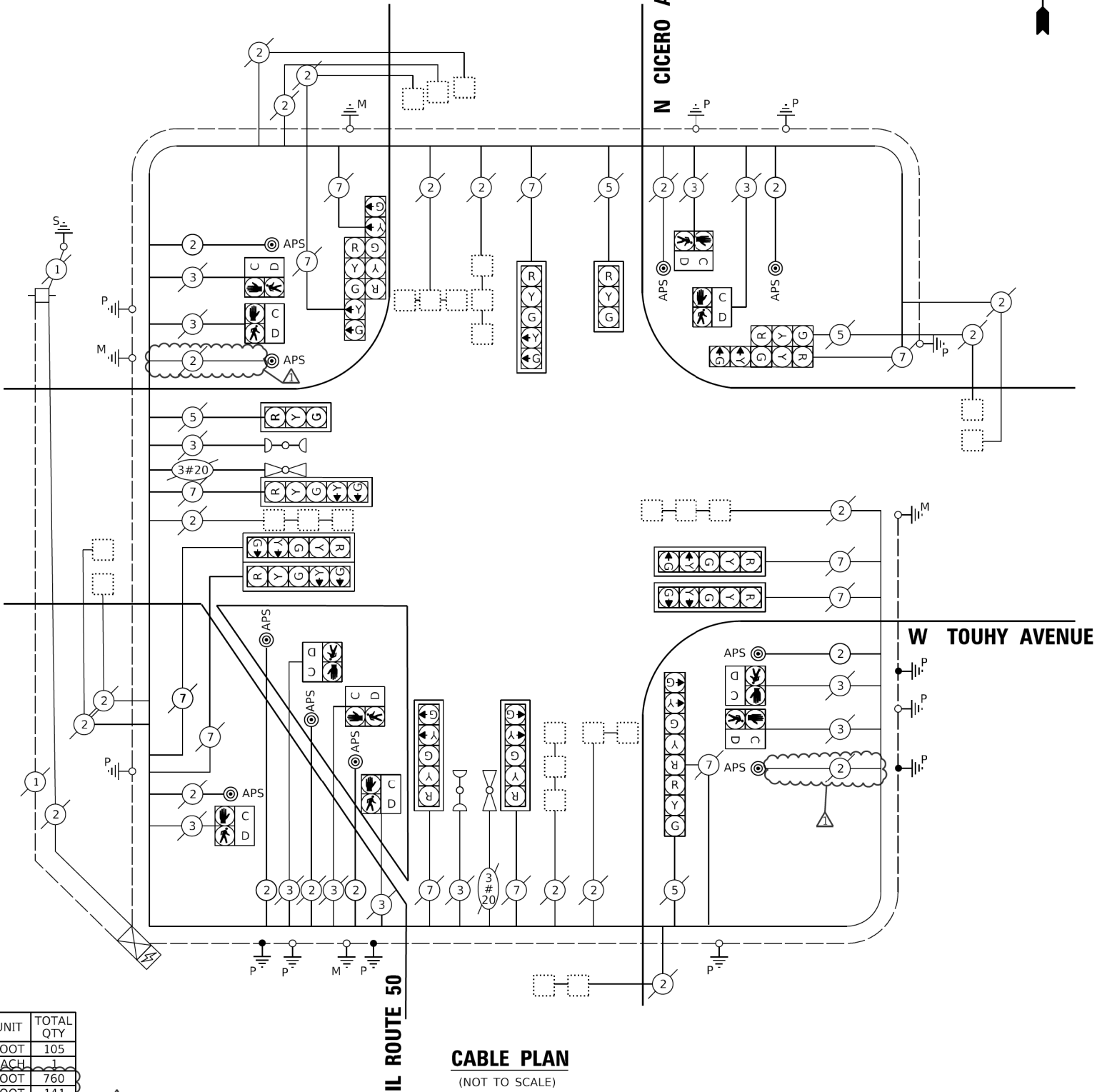
ENERGY COSTS TO:

ILLINOIS DEPARTMENT OF TRANSPORTATION
201 WEST CENTER COURT
SCHAUMBURG, IL 60196-1096

ENERGY SUPPLY: CONTACT: NAME
PHONE: TELEPHONE
COMPANY: COMMONWEALTH EDISON
ACCOUNT NUMBER: ---

SCHEDULE OF QUANTITIES

ITEM DESCRIPTION	UNIT	TOTAL QTY
UNDERGROUND CONDUIT, GALVANIZED STEEL, 2" DIA.	FOOT	105
MAINTENANCE OF EXISTING TRAFFIC SIGNAL INSTALLATION	EACH	1
ELECTRIC CABLE IN CONDUIT, SIGNAL NO. 14 2C	FOOT	760
ELECTRIC CABLE IN CONDUIT, EQUIPMENT GROUNDING CONDUCTOR, NO. 6 1C	FOOT	141
DRILL EXISTING HANDHOLE	EACH	4
DETECTOR LOOP, TYPE I	FOOT	100
MODIFY EXISTING CONTROLLER CABINET	EACH	1
REMOVE EXISTING TRAFFIC SIGNAL EQUIPMENT	EACH	1
REBUILD EXISTING HANDHOLE	EACH	2
PEDESTRIAN SIGNAL POST, 5 FT.	FOOT	4
ACCESSIBLE PEDESTRIAN SIGNALS	EACH	10
CONCRETE FOUNDATION, TYPE A 12-INCH DIAMETER	FOOT	16
RE-OPTIMIZE TRAFFIC SIGNAL SYSTEM LEVEL 1	EACH	1



CABLE PLAN
(NOT TO SCALE)

* NOMINAL QUANTITY OF DETECTOR LOOP TO BE INCLUDED FOR INCIDENTAL WORK WHERE EXISTING DETECTOR LOOP IS IMPACTED, THIS QUANTITY MAY NOT BE USED AND CAN BE USED AT THE DISCRETION OF THE IDOT PROJECT ENGINEER.

STATE OF ILLINOIS
DEPARTMENT OF TRANSPORTATION

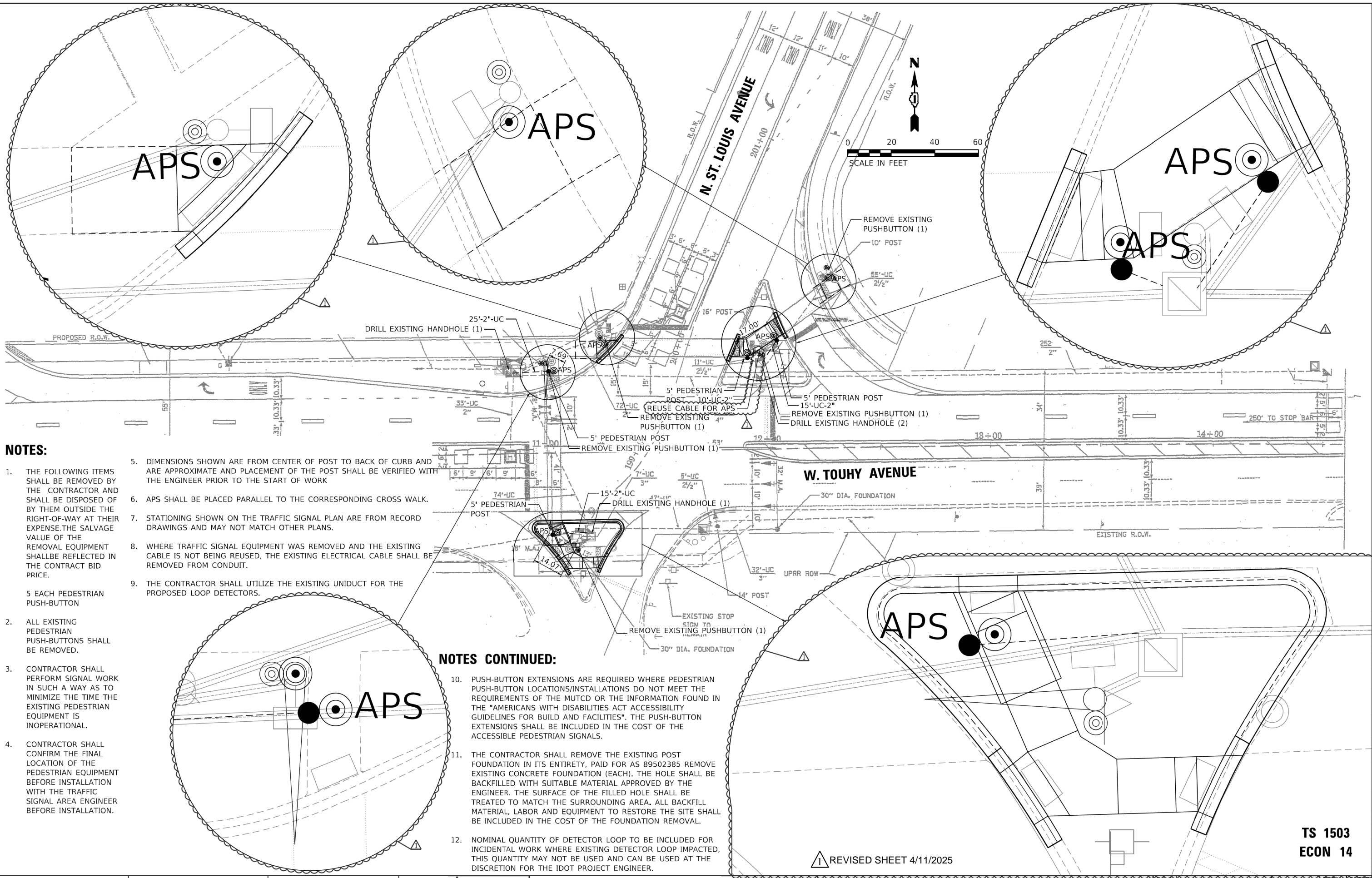
CABLE PLAN, PHASE DESIGNATION DIAGRAM,
AND EMERGENCY VEHICLE PREEMPTION SEQUENCE
W TOUHY AVENUE AT IL ROUTE 50 (CICERO AVENUE)

F.A.* RTE.	SECTION	COUNTY	TOTAL SHEETS	SHEET NO.
VAR	2021-181-SW	COOK	124	111
CONTRACT NO. 62R02				
ILLINOIS FED. AID PROJECT				

TS 2625
EAGLE 1

REVISED SHEET 4/11/2025

MODEL: Touhy ave at Cicero-2 (Sheet)
FILE NAME: c:\paw_work\idot\hassan\m0905396D108022-ehc-TS.dgn



NOTES:

- THE FOLLOWING ITEMS SHALL BE REMOVED BY THE CONTRACTOR AND SHALL BE DISPOSED OF BY THEM OUTSIDE THE RIGHT-OF-WAY AT THEIR EXPENSE. THE SALVAGE VALUE OF THE REMOVAL EQUIPMENT SHALL BE REFLECTED IN THE CONTRACT BID PRICE.

5 EACH PEDESTRIAN PUSH-BUTTON
- ALL EXISTING PEDESTRIAN PUSH-BUTTONS SHALL BE REMOVED.
- CONTRACTOR SHALL PERFORM SIGNAL WORK IN SUCH A WAY AS TO MINIMIZE THE TIME THE EXISTING PEDESTRIAN EQUIPMENT IS INOPERATIONAL.
- CONTRACTOR SHALL CONFIRM THE FINAL LOCATION OF THE PEDESTRIAN EQUIPMENT BEFORE INSTALLATION.
- DIMENSIONS SHOWN ARE FROM CENTER OF POST TO BACK OF CURB AND ARE APPROXIMATE AND PLACEMENT OF THE POST SHALL BE VERIFIED WITH THE ENGINEER PRIOR TO THE START OF WORK
- APS SHALL BE PLACED PARALLEL TO THE CORRESPONDING CROSS WALK.
- STATIONING SHOWN ON THE TRAFFIC SIGNAL PLAN ARE FROM RECORD DRAWINGS AND MAY NOT MATCH OTHER PLANS.
- WHERE TRAFFIC SIGNAL EQUIPMENT WAS REMOVED AND THE EXISTING CABLE IS NOT BEING REUSED, THE EXISTING ELECTRICAL CABLE SHALL BE REMOVED FROM CONDUIT.
- THE CONTRACTOR SHALL UTILIZE THE EXISTING UNIDUCT FOR THE PROPOSED LOOP DETECTORS.

NOTES CONTINUED:

- PUSH-BUTTON EXTENSIONS ARE REQUIRED WHERE PEDESTRIAN PUSH-BUTTON LOCATIONS/INSTALLATIONS DO NOT MEET THE REQUIREMENTS OF THE MUTCD OR THE INFORMATION FOUND IN THE "AMERICANS WITH DISABILITIES ACT ACCESSIBILITY GUIDELINES FOR BUILD AND FACILITIES". THE PUSH-BUTTON EXTENSIONS SHALL BE INCLUDED IN THE COST OF THE ACCESSIBLE PEDESTRIAN SIGNALS.
- THE CONTRACTOR SHALL REMOVE THE EXISTING POST FOUNDATION IN ITS ENTIRETY, PAID FOR AS 89502385 REMOVE EXISTING CONCRETE FOUNDATION (EACH). THE HOLE SHALL BE BACKFILLED WITH SUITABLE MATERIAL APPROVED BY THE ENGINEER. THE SURFACE OF THE FILLED HOLE SHALL BE TREATED TO MATCH THE SURROUNDING AREA. ALL BACKFILL MATERIAL, LABOR AND EQUIPMENT TO RESTORE THE SITE SHALL BE INCLUDED IN THE COST OF THE FOUNDATION REMOVAL.
- NOMINAL QUANTITY OF DETECTOR LOOP TO BE INCLUDED FOR INCIDENTAL WORK WHERE EXISTING DETECTOR LOOP IMPACTED, THIS QUANTITY MAY NOT BE USED AND CAN BE USED AT THE DISCRETION FOR THE IDOT PROJECT ENGINEER.

MODEL: Touhy ave at St. Louis -1 (Sheet)
FILE NAME: c:\paw_work\idot\hassan\0905396D108022-ah-TS.dgn

USER NAME	= naveed.hassan	DESIGNED	-	REVISED	-	03/17/2025
		DRAWN	-	REVISED	-	
		CHECKED	-	REVISED	-	
PLOT DATE	= 3/19/2025	DATE	-	REVISED	-	

STATE OF ILLINOIS
DEPARTMENT OF TRANSPORTATION

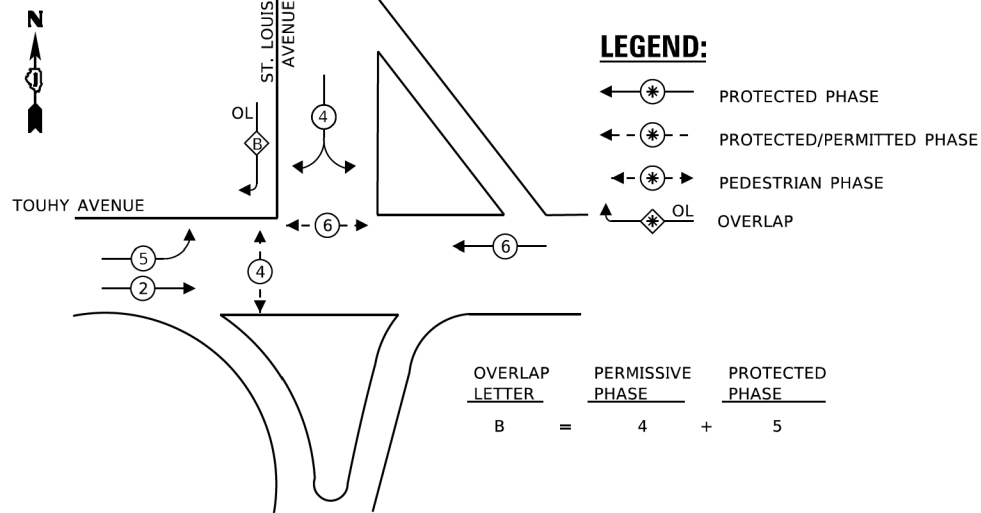
1 REVISED SHEET 4/11/2025

TRAFFIC SIGNAL PLAN			
W TOUHY AVENUE AT N ST LOUIS AVENUE			
SCALE:	SHEET 17	OF 22 SHEETS	STA. TO STA.

P.A. RTE.	SECTION	COUNTY	TOTAL SHEETS	SHEET NO.
VAR	2021-181-SW	COOK	124	112
CONTRACT NO. 62R02				
ILLINOIS FED. AID PROJECT				

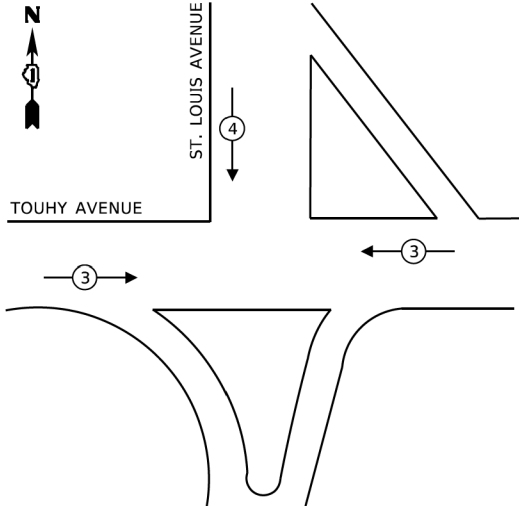
TS 1503
ECON 14

EXISTING CONTROLLER SEQUENCE



EXISTING PHASE DESIGNATION DIAGRAM

EXISTING EMERGENCY
VEHICLE PREEMPTION SEQUENCE



TRAFFIC SIGNAL
ELECTRICAL SERVICE REQUIREMENTS

TYPE	NO. OF LAMPS	LED WATTAGE	% OPERATION	TOTAL WATTAGE
SIGNAL (RED)	12	11	50	66
(YELLOW)	12	20	5	12
(GREEN)	12	12	45	64.8
PERMISSIVE ARROW	8	10	10	8
PED. SIGNAL	6	20	100	120
CONTROLLER	1	100	100	100
UPS	1	25	100	25
VIDEO SYSTEM	-	115	100	-
BLANK-OUT SIGN	-	25	5	-
FLASHER	-	-	50	-
STREET NAME SIGN	-	120	50	-
LUMINAIRE	-	285	50	-
TOTAL =				395.8

ENERGY COSTS TO:

VILLAGE OF SKOKIE
5127 OAKTON STREET
SKOKIE, IL 60077

ENERGY SUPPLY: CONTACT: LARRY SHANK
PHONE: 847-816-5465
COMPANY: COMMONWEALTH EDISON
ACCOUNT NUMBER: ---

SCHEDULE OF QUANTITIES

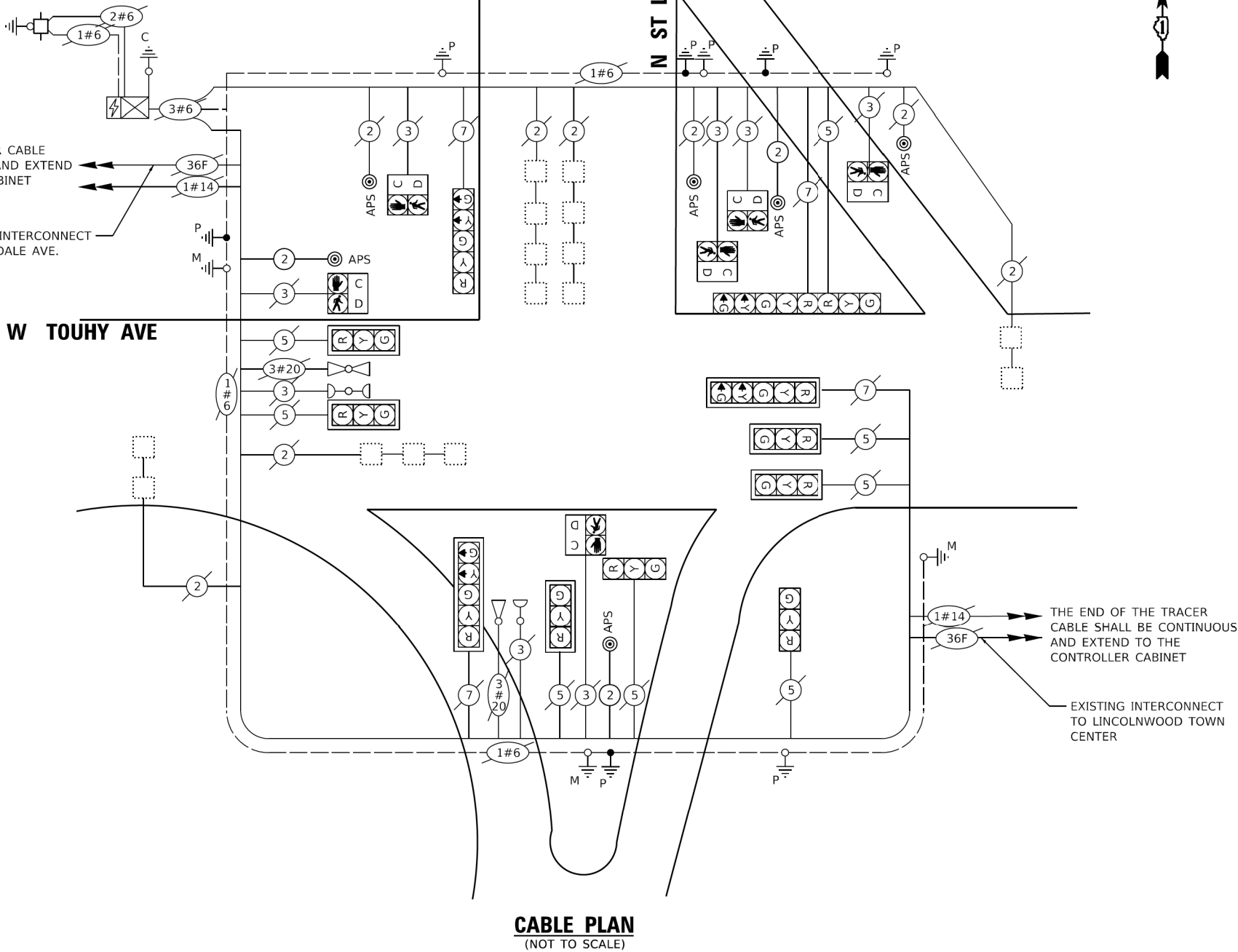
ITEM DESCRIPTION	UNIT	TOTAL QTY
UNDERGROUND CONDUIT, GALVANIZED STEEL, 2" DIA.	FOOT	65
MAINTENANCE OF EXISTING TRAFFIC SIGNAL INSTALLATION	EACH	1
ELECTRIC CABLE IN CONDUIT, SIGNAL NO. 14 2C	FOOT	335
ELECTRIC CABLE IN CONDUIT, EQUIPMENT GROUNDING CONDUCTOR, NO. 6 1C	FOOT	101
DRILL EXISTING HANDHOLE	EACH	4
DETECTOR LOOP, TYPE I	FOOT	100
MODIFY EXISTING CONTROLLER CABINET	EACH	1
REMOVE AND REINSTALL ELECTRIC CABLE FROM CONDUIT	FOOT	20
REMOVE EXISTING TRAFFIC SIGNAL EQUIPMENT	EACH	1
PEDESTRIAN SIGNAL POST, 5 FT.	EACH	4
ACCESSIBLE PEDESTRIAN SIGNALS	EACH	6
CONCRETE FOUNDATION, TYPE A 12-INCH DIAMETER	FOOT	16
RE-OPTIMIZE TRAFFIC SIGNAL SYSTEM LEVEL 1	EACH	1

STATE OF ILLINOIS
DEPARTMENT OF TRANSPORTATION

CABLE PLAN, PHASE DESIGNATION DIAGRAM,
AND EMERGENCY VEHICLE PREEMPTION SEQUENCE
W TOUHY AVENUE AT N ST LOUIS AVENUE

F.A.* RTE.	SECTION	COUNTY	TOTAL SHEETS	SHEET NO.
VAR	2021-181-SW	COOK	124	113
CONTRACT NO. 62R02				
ILLINOIS FED. AID PROJECT				

MODEL: Touhy ave at St. Louis-2 [Sheet]
FILE NAME: c:\paw_work\tdh\hassan\0905386D\08022-ehc-TS.dgn



* NOMINAL QUANTITY OF DETECTOR LOOP TO BE INCLUDED FOR INCIDENTAL WORK WHERE EXISTING DETECTOR LOOP IMPACTED, THIS QUANTITY MAY NOT BE USED AND CAN BE USED AT THE DISCRETION OF THE IDOT PROJECT ENGINEER.

1 REVISED SHEET 4/11/2025

TS 1503
ECON 14

NOTES:

1. THE FOLLOWING ITEMS SHALL BE REMOVED BY THE CONTRACTOR AND SHALL BE DISPOSED OF BY THEM OUTSIDE THE RIGHT-OF-WAY AT THEIR EXPENSE.THE SALVAGE VALUE OF THE REMOVAL EQUIPMENT SHALLBE REFLECTED IN THE CONTRACT BID PRICE.
- 2 EACH PEDESTRIAN PUSHBUTTON
2. ALL EXISTING PEDESTRIAN PUSH-BUTTONS SHALL BE REMOVED.
3. CONTRACTOR SHALL PERFORM SIGNAL WORK IN SUCH A WAY AS TO MINIMIZE THE TIME THE EXISTING PEDESTRIAN EQUIPMENT IS INOPERATIONAL.
4. CONTRACTOR SHALL CONFIRM THE FINAL LOCATION OF THE PEDESTRIAN EQUIPMENT BEFORE INSTALLATION WITH THE TRAFFIC SIGNAL AREA ENGINEER BEFORE INSTALLATION.
5. DIMENSIONS SHOWN ARE FROM CENTER OF POST TO BACK OF CURB AND ARE APPROXIMATE AND PLACEMENT OF THE POST SHALL BE VERIFIED WITH THE ENGINEER PRIOR TO THE START OF WORK
6. APS SHALL BE PLACED PARALLEL TO THE CORRESPONDING CROSS WALK.
7. STATIONING SHOWN ON THE TRAFFIC SIGNAL PLAN ARE FROM RECORD DRAWINGS AND MAY NOT MATCH OTHER PLANS.

REMOVE EXISTING PUSHBUTTON (1)
REUSE CABLE FOR APS
5'-UC-2"
REBUILD EXISTING HANDHOLE
10'-UC-2"
DRILL EXISTING HANDHOLE (2)
5' PEDESTRIAN POST

KRAFT COURT

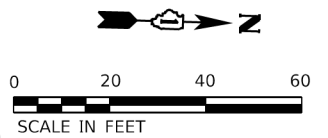
OVERLOOK DRIVE

IL ROUTE 43 (WAUKEGAN ROAD)

NOTES CONTINUED:

8. WHERE TRAFFIC SIGNAL EQUIPMENT WAS REMOVED AND THE EXISTING CABLE IS NOT BEING REUSED, THE EXISTING ELECTRICAL CABLE SHALL BE REMOVED FROM CONDUIT.
9. THE CONTRACTOR SHALL UTILIZE THE EXISTING UNIDUCT FOR THE PROPOSED LOOP DETECTORS.
10. PUSH-BUTTON EXTENSIONS ARE REQUIRED WHERE PEDESTRIAN PUSH-BUTTON LOCATIONS/INSTALLATIONS DO NOT MEET THE REQUIREMENTS OF THE MUTCD OR THE INFORMATION FOUND IN THE "AMERICANS WITH DISABILITIES ACT ACCESSIBILITY GUIDELINES FOR BUILD AND FACILITIES". THE PUSH-BUTTON EXTENSIONS SHALL BE INCLUDED IN THE COST OF THE ACCESSIBLE PEDESTRIAN SIGNALS.
11. THE CONTRACTOR SHALL REMOVE THE EXISTING POST FOUNDATION IN ITS ENTIERETY, PAID FOR AS 89502385 REMOVE EXISTING CONCRETE FOUNDATION (EACH). THE HOLE SHALL BE BACKFILLED WITH SUITABLE MATERIAL APPROVED BY THE ENGINEER. THE SURFACE OF THE FILLED HOLE SHALL BE TREATED TO MATCH THE SURROUNDING AREA. ALL BACKFILL MATERIAL, LABOR AND EQUIPMENT TO RESTORE THE SITE SHALL BE INCLUDED IN THE COST OF THE FOUNDATION REMOVAL.
12. NOMINAL QUANTITY OF DETECTOR LOOP TO BE INCLUDED FOR INCIDENTAL WORK WHERE EXISTING DETECTOR LOOP IMPACTED, THIS QUANTITY MAY NOT BE USED AND CAN BE USED AT THE DISCRETION FO THE IDOT PROJECT ENGINEER.

1 REVISED SHEET 4/11/2025



MODEL: IL-43 at Kraft Overlook (Sheet)
FILE NAME: c:\pwy_work\idol\hassan\id0905396D108022-shr-TS.dgn

USER NAME	= naveed.hassan	DESIGNED	-	REVISED	-	03/17/2025
		DRAWN	-	REVISED	-	
		CHECKED	-	REVISED	-	
PLOT DATE	= 3/19/2025	DATE	-	REVISED	-	

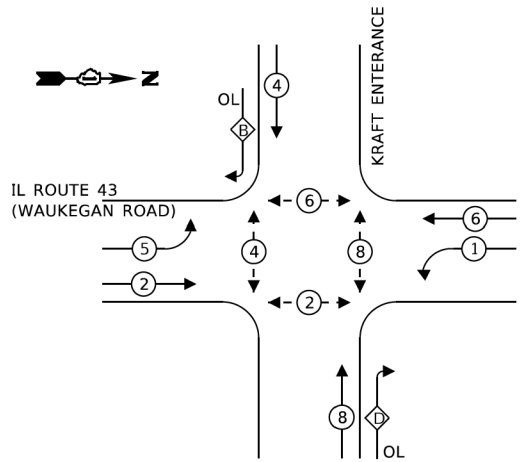
STATE OF ILLINOIS
DEPARTMENT OF TRANSPORTATION

TRAFFIC SIGNAL PLAN			
IL ROUTE 43 (WAUKEGAN ROAD) AT KRAFT COURT/OVERLOOK DRIVE			
SCALE:	SHEET 19	OF 22 SHEETS	STA. TO STA.

F.A.* RTE.	SECTION	COUNTY	TOTAL SHEETS	SHEET NO.
VAR	2021-181-SW	COOK	124	114
CONTRACT NO. 62R02				
ILLINOIS FED. AID PROJECT				

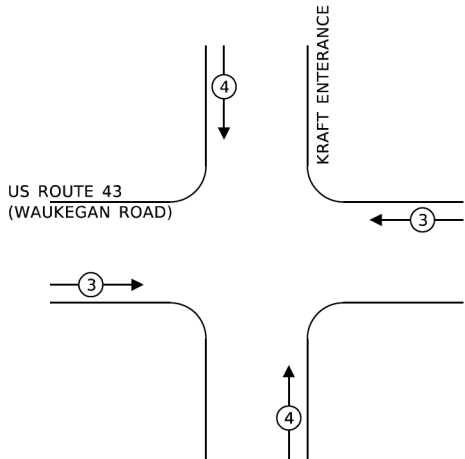
TS 21855
ECON 83

EXISTING CONTROLLER SEQUENCE



EXISTING
PHASE DESIGNATION DIAGRAM

EXISTING EMERGENCY
VEHICLE PREEMPTION SEQUENCE



LEGEND:

- PROTECTED PHASE
PROTECTED/PERMITTED PHASE
PEDESTRIAN PHASE
OVERLAP

OVERLAP LETTER	PERMISSIVE PHASE	PROTECTED PHASE
B	= 4	+ 5
D	= 8	+ 1

TRAFFIC SIGNAL
ELECTRICAL SERVICE REQUIREMENTS

TYPE	NO. OF LAMPS	LED WATTAGE	% OPERATION	TOTAL WATTAGE
SIGNAL (RED)	16	11	50	88
(YELLOW)	16	20	5	16
(GREEN)	16	12	45	86.4
PERMISSIVE ARROW	16	10	10	16
PED. SIGNAL	8	20	100	160
CONTROLLER	1	100	100	100
UPS	1	25	100	25
VIDEO SYSTEM	-	115	100	-
BLANK-OUT SIGN	-	25	5	-
FLASHER	-	-	50	-
STREET NAME SIGN	-	120	50	-
LUMINAIRE	-	285	50	-
TOTAL =				491.4

ENERGY COSTS TO:

MUNICIPALITY

STREET

CITY, IL ZIPCODE

ENERGY SUPPLY: CONTACT: NAME

PHONE: TELEPHONE

COMPANY: COMMONWEALTH EDISON

ACCOUNT NUMBER: ---

SCHEDULE OF QUANTITIES

ITEM DESCRIPTION	UNIT	TOTAL QTY
UNDERGROUND CONDUIT, GALVANIZED STEEL, 2" DIA.	FOOT	115
MAINTENANCE OF EXISTING TRAFFIC SIGNAL INSTALLATION	EACH	1
ELECTRIC CABLE IN CONDUIT, SIGNAL NO. 14 3C	FOOT	850
ELECTRIC CABLE IN CONDUIT, SIGNAL NO. 14 2C	FOOT	825
ELECTRIC CABLE IN CONDUIT, EQUIPMENT GROUNDING CONDUCTOR, NO. 6 1C	FOOT	187
DRILL EXISTING HANDHOLE	EACH	7
PEDESTRIAN SIGNAL HEAD, LED, 1-FACE, BRACKET MOUNTED WITH COUNTDOWN TIMER	EACH	6
DETECTOR LOOP, TYPE I	FOOT	100
MODIFY EXISTING CONTROLLER CABINET	EACH	1
REMOVE AND REINSTALL ELECTRIC CABLE FROM CONDUIT	FOOT	45
REMOVE EXISTING TRAFFIC SIGNAL EQUIPMENT	EACH	1
REBUILD EXISTING HANDHOLE	EACH	1
PEDESTRIAN SIGNAL POST, 10 FT.	EACH	2
PEDESTRIAN SIGNAL POST, 5 FT.	EACH	5
ACCESSIBLE PEDESTRIAN SIGNALS	EACH	8
CONCRETE FOUNDATION, TYPE A 12-INCH DIAMETER	FOOT	28

EXISTING INTERCONNECT TO ACCESS ROAD

US ROUTE 43 (WAUKEGAN ROAD)

CABLE PLAN
(NOT TO SCALE)

* NOMINAL QUANTITY OF DETECTOR LOOP TO BE INCLUDED FOR INCIDENTAL WORK WHERE EXISTING DETECTOR LOOP IMPACTED, THIS QUANTITY MAY NOT BE USED AND CAN BE USED AT THE DISCRETION OF THE IDOT PROJECT ENGINEER.

REVISED SHEET 4/11/2025

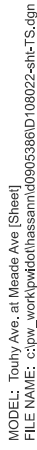
TS 21855
ECON 83

STATE OF ILLINOIS
DEPARTMENT OF TRANSPORTATION

CABLE PLAN, PHASE DESIGNATION DIAGRAM,
AND EMERGENCY VEHICLE PREEMPTION SEQUENCE
US ROUTE 43 (WAUKEGAN ROAD) AT KRAFT COURT/OVERLOOK DRIVE

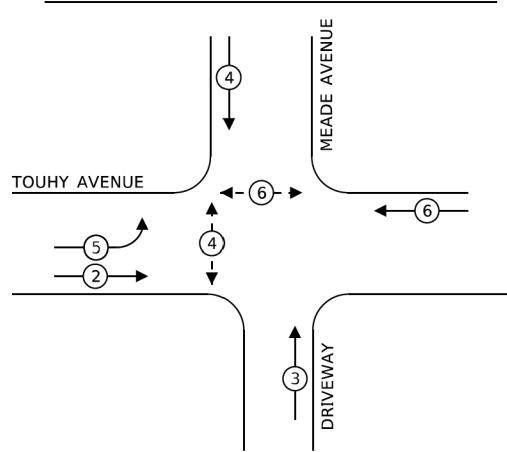
F.A.* RTE.	SECTION	COUNTY	TOTAL SHEETS	SHEET NO.
VAR	2021-181-SW	COOK	124	115
CONTRACT NO. 62R02				
ILLINOIS FED. AID PROJECT				

MODEL: IL-43 at Kraft Overlook-1 (Sheet)
FILE NAME: c:\pwy\work\hassan\id0905386D108022-ehc-TS.dgn



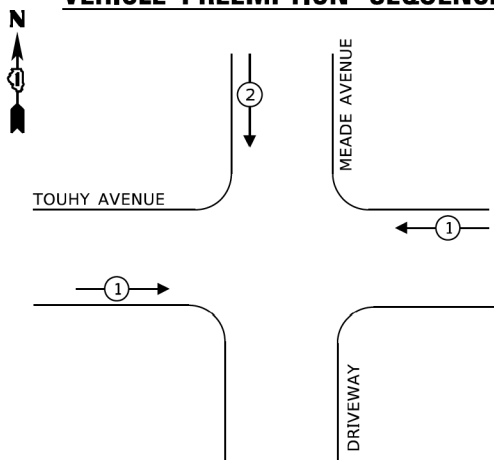
1 REVISED SHEET 4/11/2025

EXISTING CONTROLLER SEQUENCE



EXISTING PHASE DESIGNATION DIAGRAM

EXISTING EMERGENCY VEHICLE PREEMPTION SEQUENCE



LEGEND:

- PROTECTED PHASE
- PROTECTED/PERMITTED PHASE
- PEDESTRIAN PHASE
- OVERLAP

THE END OF THE TRACER CABLE SHALL BE TIED TO A CABLE HOOK IN THE DOUBLE HANDHOLE CLOSEST TO THE CONTROLLER FOUNDATION.

TRACER CABLE
NO. 62.5/125
INTERCONNECT TO LEHIGH AVE.

THE END OF THE TRACER CABLE SHALL BE TIED TO A CABLE HOOK IN THE DOUBLE HANDHOLE CLOSEST TO THE CONTROLLER FOUNDATION

TRACER CABLE
NO. 62.5/125
INTERCONNECT TO MELVINA AVE.

W TOUHY AVENUE

MEADE AVENUE

DRIVEWAY

CABLE PLAN
(NOT TO SCALE)

SCHEDULE OF QUANTITIES

ITEM DESCRIPTION	UNIT	TOTAL QTY
UNDERGROUND CONDUIT, GALVANIZED STEEL, 2" DIA.	FOOT	5
MAINTENANCE OF EXISTING TRAFFIC SIGNAL INSTALLATION	EACH	1
ELECTRIC CABLE IN CONDUIT, SIGNAL NO. 14 2C	FOOT	50
ELECTRIC CABLE IN CONDUIT, EQUIPMENT GROUNDING CONDUCTOR, NO. 6 1C	FOOT	14
DRILL EXISTING HANDHOLE	EACH	1
DETECTOR LOOP, TYPE I	FOOT	100
MODIFY EXISTING CONTROLLER CABINET	EACH	1
REMOVE AND REINSTALL ELECTRIC CABLE FROM CONDUIT	FOOT	0
REMOVE EXISTING TRAFFIC SIGNAL EQUIPMENT	EACH	1
PEDESTRIAN SIGNAL POST, 5 FT.	EACH	1
ACCESSIBLE PEDESTRIAN SIGNALS	EACH	4
CONCRETE FOUNDATION, TYPE A 12-INCH DIAMETER	FOOT	4
RE-OPTIMIZE TRAFFIC SIGNAL SYSTEM LEVEL 1	EACH	1

* NOMINAL QUANTITY OF DETECTOR LOOP TO BE INCLUDED FOR INCIDENTAL WORK WHERE EXISTING DETECTOR LOOP IMPACTED, THIS QUANTITY MAY NOT BE USED AND CAN BE USED AT THE DISCRETION OF THE IDOT PROJECT ENGINEER.

TS 5841
ECON 156

REVISED SHEET 4/11/2025

TRAFFIC SIGNAL ELECTRICAL SERVICE REQUIREMENTS

TYPE	NO. OF LAMPS	LED WATTAGE	% OPERATION	TOTAL WATTAGE
SIGNAL (RED)	11	11	50	60.5
(YELLOW)	11	20	5	11
(GREEN)	11	12	45	59.4
PERMISSIVE ARROW	8	10	10	8
PED. SIGNAL	4	20	100	80
CONTROLLER	1	100	100	100
UPS	1	25	100	25
VIDEO SYSTEM	-	115	100	-
BLANK-OUT SIGN	-	25	5	-
FLASHER	-	-	20	-
STREET NAME SIGN	-	120	20	-
LUMINAIRE	-	285	0	-
TOTAL =				343.9

ENERGY COSTS TO:

MUNICIPALITY
STREET
CITY, IL ZIPCODE

ENERGY SUPPLY: CONTACT: NAME
PHONE: TELEPHONE
COMPANY: COMMONWEALTH EDISON
ACCOUNT NUMBER: ---

USER NAME = naveed.hassan
PLOT DATE = 3/19/2025

DESIGNED -
DRAWN -
CHECKED -
DATE -

REVISED - 03/17/2025
REVISED -
REVISED -
REVISED -

STATE OF ILLINOIS
DEPARTMENT OF TRANSPORTATION

CABLE PLAN, PHASE DESIGNATION DIAGRAM,
AND EMERGENCY VEHICLE PREEMPTION SEQUENCE
W TOUHY AVENUE AT MEADE AVENUE

SCALE: SHEET 22 OF 22 SHEETS STA. TO STA.

F.A.* RTE.	SECTION	COUNTY	TOTAL SHEETS	SHEET NO.
VAR	2021-181-SW	COOK	124	117
CONTRACT NO. 62R02				
ILLINOIS FED. AID PROJECT				