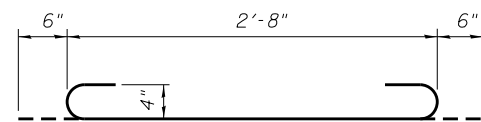
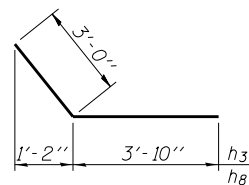


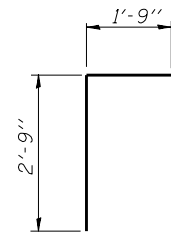
SECTION THRU BARREL



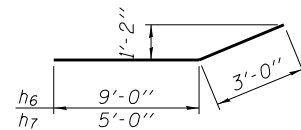
BAR a1



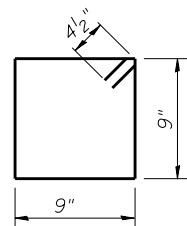
BARS h3 & h8



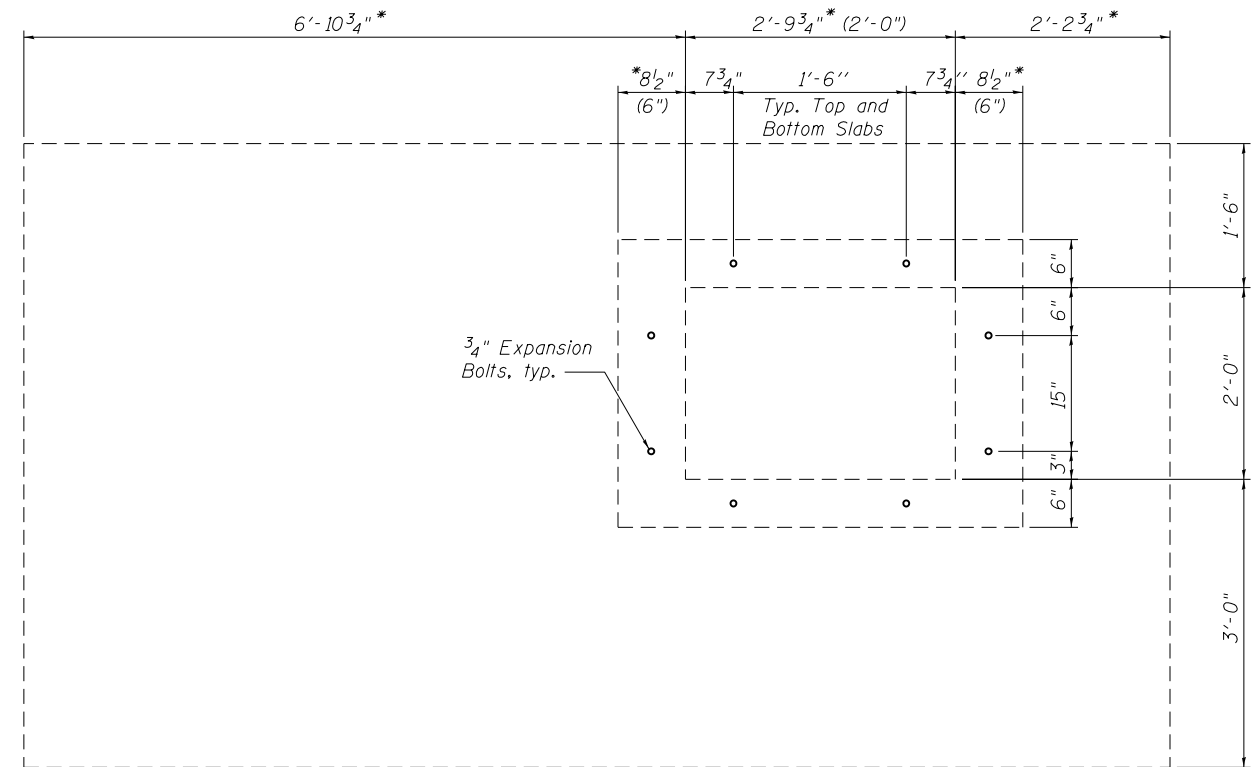
BAR d



BARS h6 & h7



BAR s



END ELEVATION OF EXISTING BARREL

Showing placement of Expansion Bolts
*Dim along skew (Dim at Rt. L's to culvert)

Note:
Expansion Bolts shall be 3/4" hooked bolts and shall conform to the requirements of article 1006.09 of the standard specifications. Hooked bolts shall extend a minimum of 9" into new concrete.

NOTES

A distance of half the length of the wingwall but not less than six feet of the barrel shall be poured monolithically with the wingwalls.
Reinforcement bars shall conform to the requirements of ASTM A 706 Gr 60.

Bars indicated thus 12 x 4-#5 etc. indicates 12 lines of bars with 4 lengths per line.

Precast Alternate is not allowed.
Exposed edges shall have a 3/4" chamfer unless otherwise noted.
All construction joints shall be bonded.

Plan dimensions and details relative to existing plans are subject to nominal construction variations. The Contractor shall field verify existing dimensions and details affecting new construction and make necessary approved adjustments prior to construction or ordering of materials. Such variations shall not be cause for additional compensation for a change in scope of the work, however, the Contractor will be paid for the quantity actually furnished at the unit price bid for the work.

BILL OF MATERIAL

Bar	No.	Size	Length	Shape
a1	64	#4	3'-8"	U
a2	14	#4	2'-3"	—
d	3	#4	4'-6"	L
h	5	#5	22'-9"	—
h1	6	#4	22'-9"	—
h2	6	#5	22'-9"	—
h3	5	#4	8'-0"	—
h4	2	#6	2'-3"	—
h5	12	#6	3'-7"	—
h6	7	#4	12'-0"	—
h7	5	#4	8'-0"	—
h8	7	#4	6'-10"	—
s	11	#4	3'-9"	□
v	66	#4	2'-9"	—
v1	8	#4	5'-6"	—
			Cu. Yd.	6.5
Concrete Box Culverts			Pound	930
Reinforcement Bars			Each	8
Expansion Bolts 3/4 Inch			Sq. Yd.	24
Stone Riprap, Class A4			Sq. Yd.	24
Filter Fabric				

SSB-H-L

7-1-10



USER NAME =	DESIGNED -	REVISED -
	CHECKED -	REVISED -
PLOT SCALE =	DRAWN -	REVISED -
PLOT DATE =	CHECKED -	REVISED -

STATE OF ILLINOIS
DEPARTMENT OF TRANSPORTATION

PROPOSED CULVERT EXTENSION DETAILS

SHEET NO. OF SHEETS

F.A.P. RTE.	SECTION	COUNTY	TOTAL SHEETS	SHEET NO.
134	(110, 111)-I	MADISON	34	27
CONTRACT NO. 76F76				
ILLINOIS FED. AID PROJECT				

X:\CH\NE\2011\11004-14\CAD\Plans\AS SUBMITTED TO DB\Details-2.dgn