

**STATE OF ILLINOIS**  
**DEPARTMENT OF TRANSPORTATION**  
**DIVISION OF HIGHWAYS**  
**PROPOSED**  
**HIGHWAY PLANS**

**MS ROUTE 1040 (CENTER ST.)**  
**SECTION (1-9)I**

**D.E. MISCELLANEOUS**  
**ADAMS COUNTY**

C-96-050-14  
 R 7 W

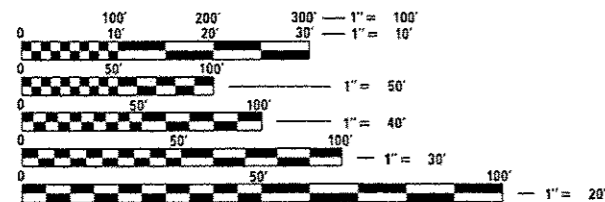
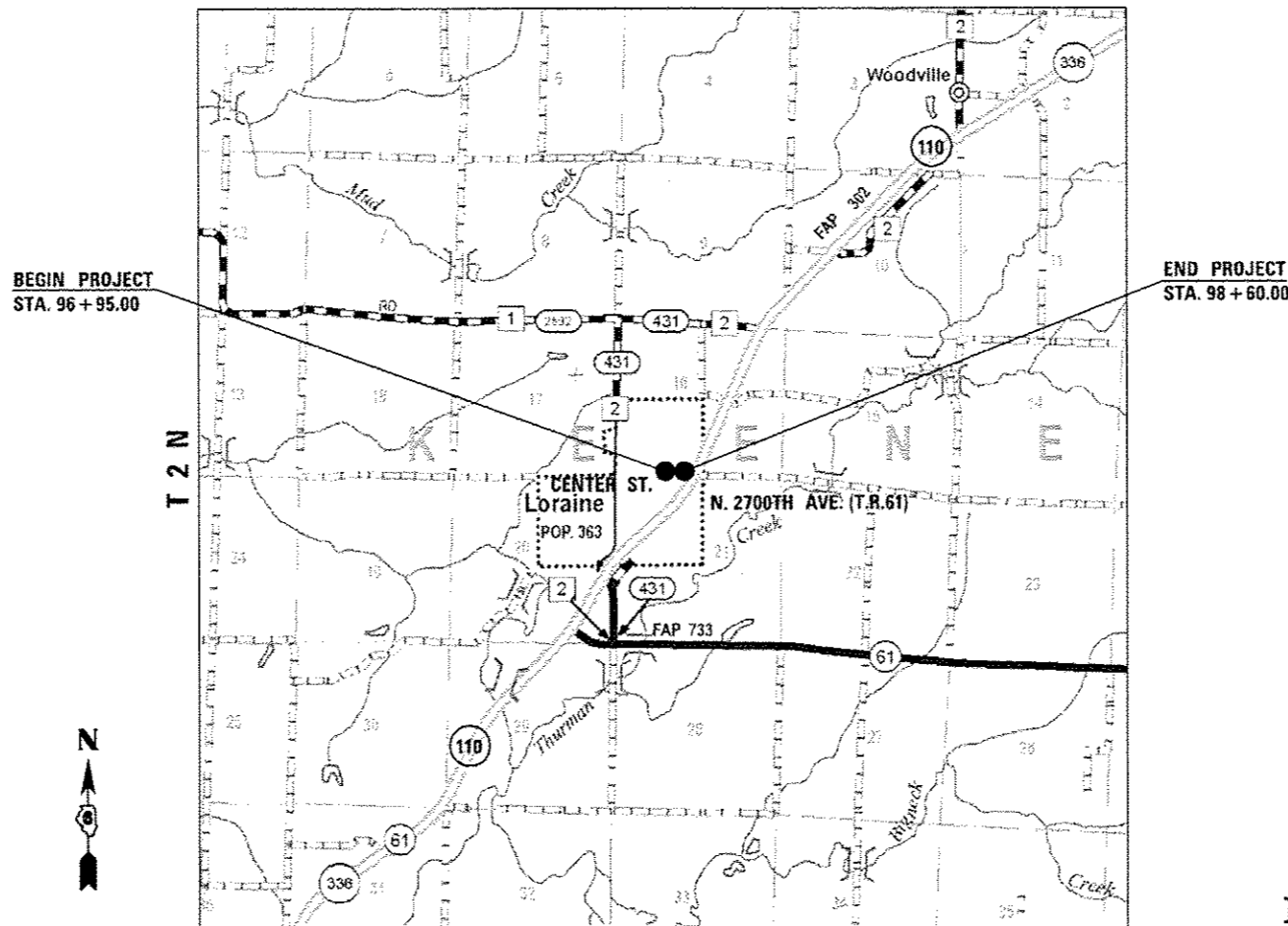
MS RTE.	SECTION	COUNTY	TOTAL SHEETS	SHEET NO.
1040	(1-9)I	ADAMS	5	1
		ILLINOIS	CONTRACT NO. 72G79	

**INDEX OF SHEETS**

- 1 COVER SHEET
- 2 GENERAL NOTES
- 3 SUMMARY OF QUANTITIES
- 4 SCHEDULE OF QUANTITIES /TYPICAL SECTION /DETAILS
- 5 PLAN AND PROFILE SHEET

**STANDARDS**

- B.L.R. 21-9      601101-01
- B.L.R. 22-7      701901-03



FULL SIZE PLANS HAVE BEEN PREPARED USING STANDARD ENGINEERING SCALES. REDUCED SIZED PLANS WILL NOT CONFORM TO STANDARD SCALES. IN MAKING MEASUREMENTS ON REDUCED PLANS, THE ABOVE SCALES MAY BE USED.

J.U.L.I.E.  
 JOINT UTILITY LOCATION INFORMATION FOR EXCAVATION  
 1-800-892-0123  
 OR 811

SENIOR TEAM ENGINEER: MARK DUST (217) 785-0597  
 TEAM MANAGER: JARED MARTIN (217) 524-0064

CONTRACT NO. 72G79

**LOCATION MAP**  
 GROSS LENGTH = 165.0 FT. = 0.031 MILE  
 NET LENGTH = 165.0 FT. = 0.031 MILE

**TRAFFIC COUNT**  
 ADT = 25 (2000)  
 PV = N/A  
 SU = N/A  
 MU = N/A

STATE OF ILLINOIS  
 DEPARTMENT OF TRANSPORTATION  
 DIVISION OF HIGHWAYS

SUBMITTED *February 6, 2014*  
*Raymond L. Driskell*  
 DEPUTY DIRECTOR OF HIGHWAYS, REGION ENGINEER

*March 21, 2014*  
*John D. Baranzelli, P.E.*  
 ENGINEER OF DESIGN AND ENVIRONMENT

*March 21, 2014*  
*Omer Osman, P.E.*  
 DIRECTOR OF HIGHWAYS, CHIEF ENGINEER

**PRINTED BY THE AUTHORITY**  
**OF THE STATE OF ILLINOIS**

**GENERAL NOTES**

1. ANY REFERENCE TO A STANDARD IN THESE PLANS SHALL BE INTERPRETED TO MEAN THE EDITION AS INDICATED BY THE SUB NUMBER LISTED IN THE INDEX OF SHEETS OR THE COPY OF THE STANDARD INCLUDED IN THESE PLANS.
2. IN ADDITION TO FIELD SURVEYS, PLAN DIMENSIONS AND DETAILS RELATIVE TO THE EXISTING FACILITIES HAVE BEEN TAKEN FROM EXISTING PLANS AND ARE SUBJECT TO CONSTRUCTION VARIATIONS. IT SHALL BE THE CONTRACTOR'S RESPONSIBILITY TO VERIFY SUCH DIMENSIONS AND DETAILS IN THE FIELD. SUCH VARIATIONS SHALL NOT BE A CAUSE FOR ADDITIONAL COMPENSATION DUE TO A CHANGE IN THE SCOPE OF WORK; HOWEVER, THE CONTRACTOR WILL BE PAID FOR THE QUANTITY ACTUALLY FURNISHED AT THE UNIT PRICE BID FOR THE WORK.
3. ACCESS TO ALL ENTRANCES AND SIDE ROADS SHALL BE MAINTAINED AT ALL TIMES.
4. THE CONTRACTOR SHALL BE RESPONSIBLE FOR PROTECTING UTILITY PROPERTY FROM CONSTRUCTION OPERATIONS, AS OUTLINED IN ARTICLE 107.31 OF THE STANDARD SPECIFICATIONS. THE J.U.L.I.E. NUMBER IS 1-800-892-0123. A MINIMUM OF 48 HOURS ADVANCE NOTICE IS REQUIRED.
5. THE THICKNESS OF BITUMINOUS MIXTURES SHOWN ON THE PLANS IS THE NOMINAL THICKNESS. DEVIATIONS FROM THE NOMINAL THICKNESS WILL BE PERMITTED WHEN SUCH DEVIATIONS OCCUR DUE TO IRREGULARITIES IN THE EXISTING SURFACE OR BASE ON WHICH THE BITUMINOUS MIXTURE IS PLACED.
6. ALL SAW CUTS, NECESSARY TO COMPLETE THE WORK DETAILED IN THESE PLANS, SHALL BE INCLUDED IN THE COST FOR THE VARIOUS PAY ITEMS INVOLVED. THE MINIMUM SAW CUT DEPTH IN THE PAVEMENT SHALL BE 1 1/2 " UNLESS OTHERWISE SPECIFIED IN A DETAIL SHOWN IN THE PLANS.
7. UNLESS DIRECTED BY THE ENGINEER, PAVEMENT MARKING LINES SHALL NOT BE LAID DIRECTLY OVER A LONGITUDINAL CRACK OR JOINT NOR OVER A TAR OR ASPHALT PAINTED LINE. THE EDGE OF A CENTERLINE OR LANE LINE SHALL BE OFFSET A MINIMUM DISTANCE OF 2" FROM A LONGITUDINAL CRACK OR JOINT. EDGE LINES SHALL BE APPROXIMATELY 2" FROM THE EDGE LINE OF PAVEMENT. SEE SECTION 780 OF THE STANDARD SPECIFICATIONS FOR TRAFFIC CONTROL ITEMS.
8. NO PASSING ZONES TO BE FIELD VERIFIED BY THE BUREAU OF OPERATIONS. THE RESIDENT ENGINEER SHALL NOTIFY THE BUREAU OF OPERATIONS AT LEAST 14 DAYS PRIOR TO PLACEMENT OF FINAL PERMANENT PAVEMENT MARKING. (PH: 217-785-5312)
9. THE FOLLOWING RATES OF APPLICATION HAVE BEEN USED TO CALCULATE THE PLAN QUANTITIES:  
 BITUMINOUS MATERIALS (PRIME COAT)           0.00038 TON/SQ. YD. (ON PAVEMENT)  
 BITUMINOUS MATERIALS (PRIME COAT)           0.001425 TON/SQ. YD. (ON AGG.)  
 AGGREGATE PRIME COAT                           0.002 TON/SQ. YD.  
 BITUMINOUS CONCRETE SURFACE / BINDER       0.056 TON/SQ. YD. PER 1"  
 AGGREGATE MATERIAL                            2.05 TON/CU. YD.
10. THE EXISTING ROAD SIGNS THAT INTERFERE WITH CONSTRUCTION WILL BE REMOVED OR RELOCATED AS DIRECTED BY THE ENGINEER. AFTER THE CONSTRUCTION IS COMPLETED, THE CONTRACTOR WILL REPLACE THE SIGNS AS DIRECTED BY THE ENGINEER. THIS WORK WILL NOT BE PAID SEPARATELY BUT SHALL BE CONSIDERED INCLUDED IN THE CONTRACT, AND NO COMPENSATION WILL BE ALLOWED.
11. THE PAY ITEM AGGREGATE BASE REPAIR (SPECIAL) WITH AN ESTIMATED QUANTITY OF 100 TONS HAS BEEN ADDED FOR REPAIR OF THE EXISTING SUBBASE IF NEEDED

**COMMITMENTS**

1. THE RESIDENT ENGINEER SHALL CONTACT STUDIES & PLANS CONCERNING ANY MAJOR PLAN CHANGE. TO MAKE SURE NO PREVIOUS COMMITMENTS (NOT LISTED) WERE MADE AFFECTING THE DESIGN AND ALLOW AN IMPROVED DESIGN FOR FUTURE PROJECTS.

THE FOLLOWING MIXTURE REQUIREMENTS ARE APPLICABLE FOR THIS PROJECT:

MIXTURE USE(S):	HMA SURFACE COURSE	HMA BASE COURSE
PG:	PG 64-22	PG 64-22
DESIGN AIR VOIDS:	4.0% @ N 50	4.0% @ N 50
MIXTURE COMPOSITION: (GRADATION MIXTURE)	IL 9.5	IL 19.0
FRICTION AGGREGATE:	MIX "C"	N/A
QUALITY MANAGEMENT	QC/OA	QC/OA

DISTRICT SIX	
EXAMINED <u>02/03</u>	20 <u>14</u>
<i>William M. Barger</i> for William M. Barger	
OPERATIONS ENGINEER	
EXAMINED <u>JANUARY 30</u>	20 <u>14</u>
<i>John J. [Signature]</i>	
PROJECT IMPLEMENTATION ENGINEER	
EXAMINED <u>January 30</u>	20 <u>14</u>
<i>2RM/ly</i>	
PROGRAM DEVELOPMENT ENGINEER	

SUMMARY OF QUANTITIES				CONSTR. CODE
CODE NO.	ITEM	UNIT	TOTAL QUANTITY	ROADWAY
				0004 RURAL
35501310	HOT-MIX ASPHALT BASE COURSE, 6 1/2"	SQ YD	430	430
40600200	BITUMINOUS MATERIALS (PRIME COAT)	TON	0.2	0.2
40600300	AGGREGATE (PRIME COAT)	TON	0.9	0.9
40603310	HOT-MIX ASPHALT SURFACE COURSE, MIX "C", N50	TON	36.1	36.1
48102100	AGGREGATE WEDGE SHOULDER, TYPE B	TON	13.9	13.9
60100060	CONCRETE HEADWALLS FOR PIPE DRAINS	EACH	3	3
60108100	PIPE UNDERDRAINS 4" (SPECIAL)	FOOT	40	40
67100100	MOBILIZATION	L SUM	1	1
70101830	TRAFFIC CONTROL AND PROTECTION, STANDARD BLR 21	L SUM	1	1
70101835	TRAFFIC CONTROL AND PROTECTION, STANDARD BLR 22	L SUM	1	1
X0326911	TRANSVERSE DRAINS COMPLETE	EACH	3	3
X3580300	AGGREGATE BASE REPAIR (SPECIAL)	TON	100	100
X4404400	PAVEMENT REMOVAL (SPECIAL)	SQ YD	430	430

13

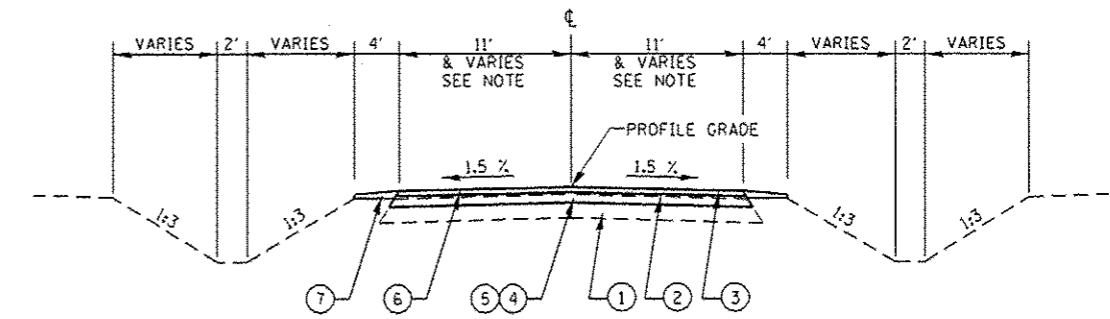
PAVEMENT SCHEDULE									
LOCATION STATION TO STATION MS 1040 (CENTER ST.)	LENGTH	WIDTH	PAVEMENT REMOVAL (SQ YD)	HMA BASE COURSE (6 1/2") (SQ YD)	HMA SURF. COURSE MIX "C" N50 (1 1/2") (TON)	BIT. MAT. PRIME CT. (TON)	AGG. PRIME CT. (TON)		
STA. 96+95.00 TO STA. 98+00.00	105.00	22	256.67	256.67	21.56	0.10	0.51		
STA. 98+00.00 TO STA. 98+60.00	60.00	VARIES 22 - 30	173.33	173.33	14.56	0.07	0.35		
TOTAL			430.0	430.0	36.1	0.2	0.9		

DRAINAGE SCHEDULE			
LOCATION MS 1040 (CENTER ST.)	TRANSVERSE DRAINS COMPLETE (EA)	PIPE UNDERDRAINS 4" (SPECIAL) (FT)	CONCRETE HEADWALL FOR PIPE DRAINS (EA)
STA. 97+05	1.0	7.0	1.0
STA. 97+75	1.0	9.0	1.0
STA. 98+50	1.0	24.0	1.0
TOTAL		3.0	3.0

AGGREGATE WEDGE SHOULDERS TYPE B				
LOCATION STATION TO STATION MS 1040 (CENTER ST.)	LENGTH (FT)	WIDTH (FT)	(TONS)	
LEFT				
STA. 96+95.00 TO STA. 98+00.00	105.00	4	5.4	
STA. 98+00.00 TO STA. 98+60.00	60.00	VARIES 4-0	1.5	
RIGHT				
STA. 96+95.00 TO STA. 98+00.00	105.00	4	5.4	
STA. 98+00.00 TO STA. 98+60.00	60.00	VARIES 4-0	1.5	
TOTAL			13.9	

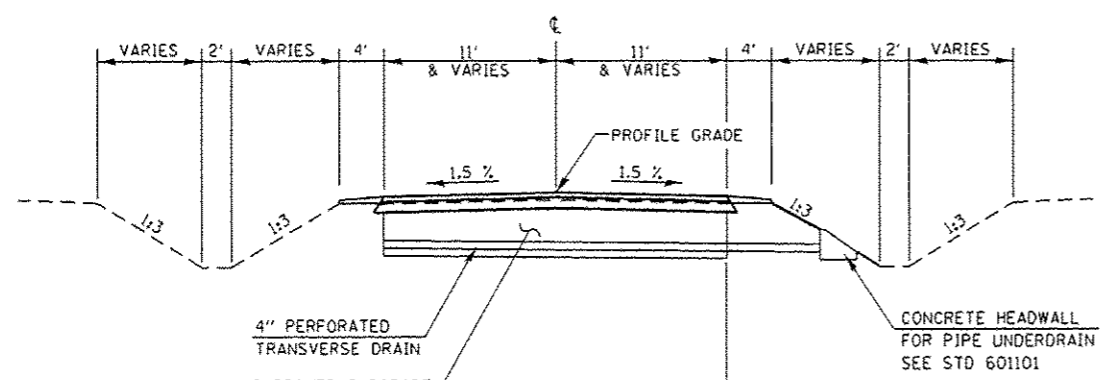
ESTIMATED QUANTITY	
LOCATION STATION TO STATION MS 1040 (CENTER ST.)	AGGREGATE BASE REPAIR (SPECIAL) (TONS)
STA. 96+95.00 TO STA. 98+60.00	100.0
• FOR REPAIR OF SUBBASE IF NEEDED TOTAL	
	100.0

- LEGEND**
- ① EXISTING AGGREGATE BASE COURSE TYPE A, 12"
  - ② EXISTING LEVELING BINDER, VARIABLE DEPTH
  - ③ EXISTING SURFACE COURSE, 1 1/2" - EXISTING OIL & CHIP
  - ④ PROPOSED PAVEMENT REMOVAL
  - ⑤ PROPOSED HMA BASE COURSE, (6 1/2")
  - ⑥ PROPOSED HMA SURFACE COURSE, MIX "C" N50 (1 1/2")
  - ⑦ PROPOSED AGGREGATE WEDGE SHOULDER, TYPE B



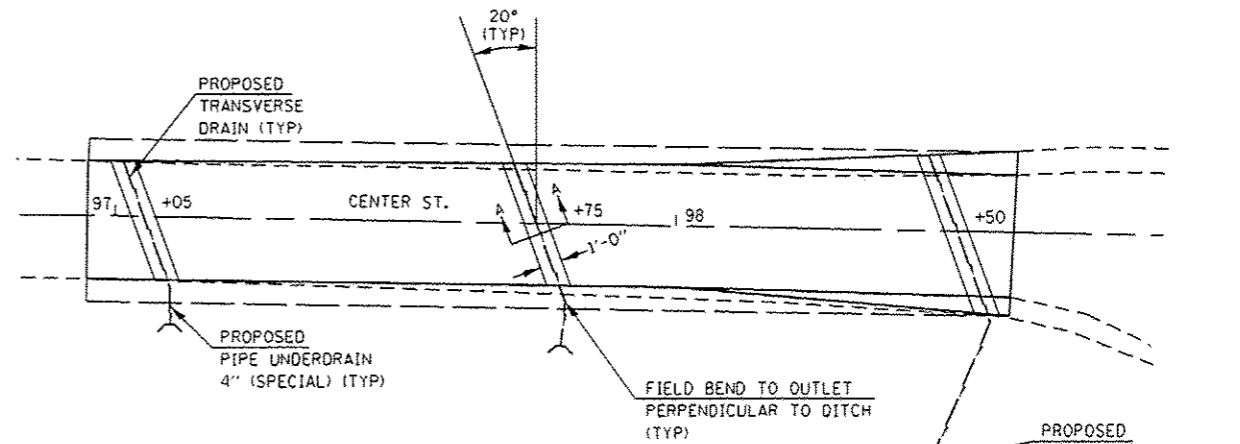
**TYPICAL SECTION - MS 1040 (CENTER ST.)**

STA. 96+95 TO STA. 98+60  
NOTE: STA. 98+00 TO STA. 98+60 PAVEMENT TAPERS FROM 22' TO 30' TO MATCH EXISTING HMA SHOULDERS



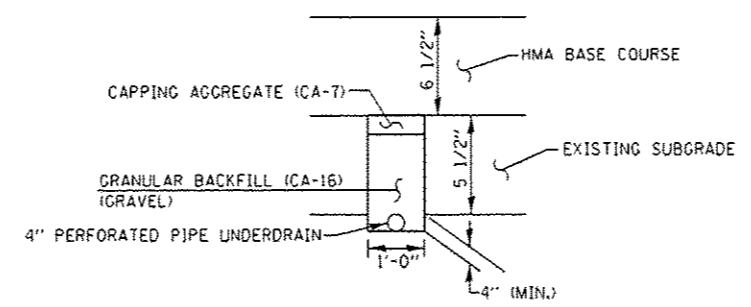
**TRANSVERSE DRAIN ELEVATION**

STA. 97+05  
STA. 97+75  
STA. 98+50



**TRANSVERSE DRAIN PLAN**

STA. 97+05  
STA. 97+75  
STA. 98+50



**SECTION A-A**

**NOTES**

1. TRANSVERSE DRAIN MATERIALS AND CONSTRUCTION SHALL CONFORM TO SECTION 601 OF THE STANDARD SPECIFICATIONS EXCEPT THAT NO FABRIC ENVELOPE IS REQUIRED ON PERFORATED PIPE AND THE GRANULAR BACKFILL GRADATION SHALL BE CA-16 GRAVEL.
2. ALL MATERIALS WILL NOT BE MEASURED SEPARATELY, BUT WILL BE INCLUDED IN THE COST PER UNIT FOR TRANSVERSE DRAINS.
3. SKEW TRANSVERSE DRAIN 20% FORWARD IN DIRECTION OF FLOW.
4. PIPE UNDERDRAINS MAY BE DELETED WITHIN ROCKFILL AREAS WHERE TRANSVERSE DRAINS ARE INSTALLED.

