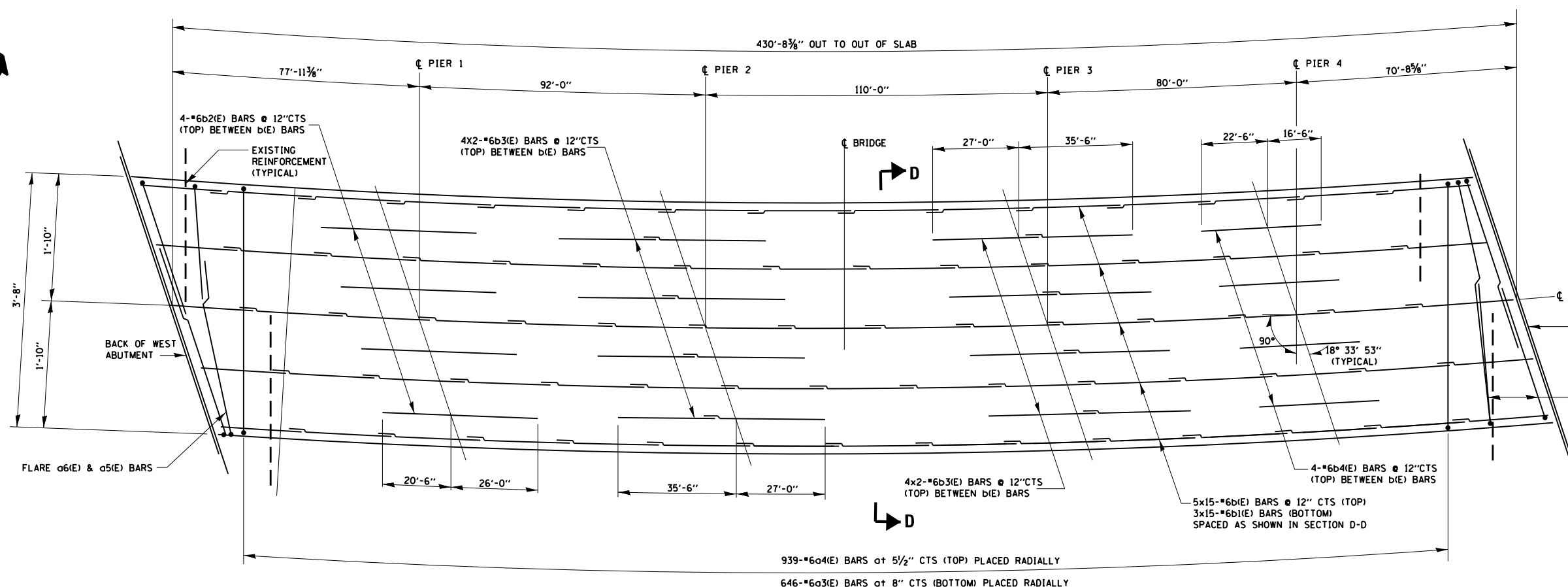


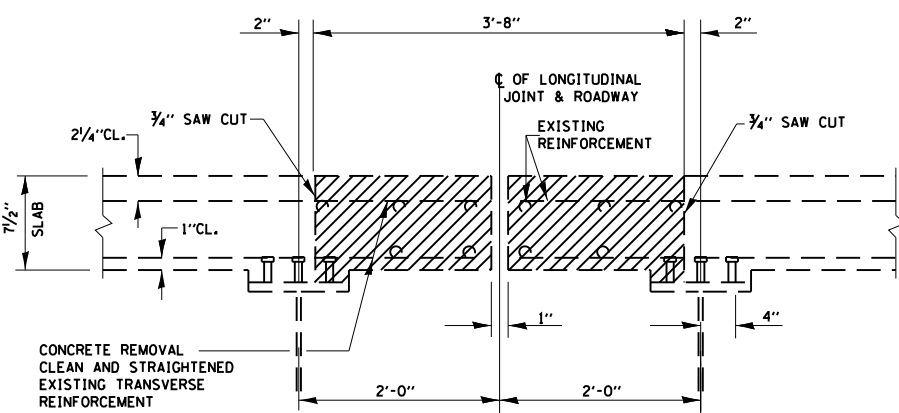
**BILL OF MATERIALS**

BAR	NO.	SIZE	LENGTH	SHAPE
a3(E)	646	#6	4'-9"	
a4(E)	939	#6	3'-5"	
a5(E)	8	#6	3'-7"	
a6(E)	6	#6	3'-7"	
b(E)	75	#6	31'-2"	
b1(E)	45	#6	31'-2"	
b2(E)	4	#6	46'-6"	
b3(E)	16	#6	32'-7"	
b4(E)	4	#6	39'-0"	
ITEM	UNIT	QUANTITY		
REINFORCEMENT BARS (EPOXY COATED)	POUND	12,950		
CONCRETE REMOVAL	CU.YD.	36.7		
CONCRETE SUPERSTRUCTURE	CU.YD.	42.6		

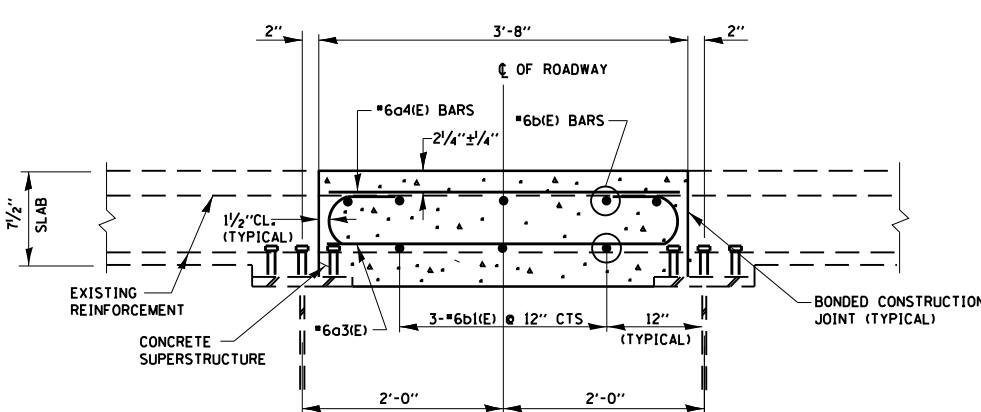


**DECK PLAN**

**LONGITUDINAL JOINT CLOSURE**



**SECTION D-D EXISTING**



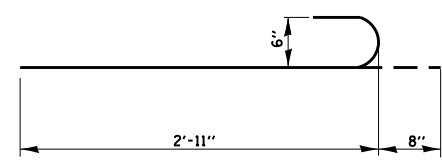
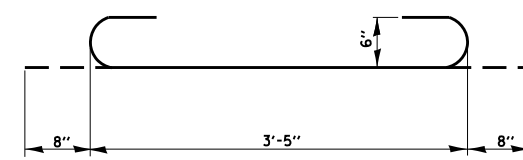
**SECTION D-D PROPOSED AT RIGHT ANGLES TO CL ROADWAY**

MINIMUM BAR LAPS

SIZE	LAP
#6	2'-7"

**NOTES:**

BARS INDICATE THUS 6x15-#5 ETC. INDICATES 6 LINES OF BARS WITH 15 LENGTHS PER LINE.



FILE NAME =	USER NAME = Gorengautab	DESIGNED - MVT	REVISED -	<b>STATE OF ILLINOIS DEPARTMENT OF TRANSPORTATION</b>	<b>ILL 120 (ELM STREET) OVER FOX RIVER LONGITUDINAL JOINT CLOSURE S.N. 056-0049</b>		F.A.P. RTE. 333	SECTION 14X-1-3(13)	COUNTY McHENRY	TOTAL SHEETS 29	SHEET NO. 9		
Default	et:\pw\work\p1dot\gorengautab\d0101671\056-0049.dgn	DRAWN - MVT	REVISED -				SCALE:	SHEET 6 OF SHEETS	STA. TO STA.	<b>CONTRACT NO. 60X22</b>		ILLINOIS FED. AID PROJECT	
	PLOT SCALE = 100.0000' / 1"	CHECKED -	REVISED -										
	PLOT DATE = 2/19/2014	DATE -	REVISED -										