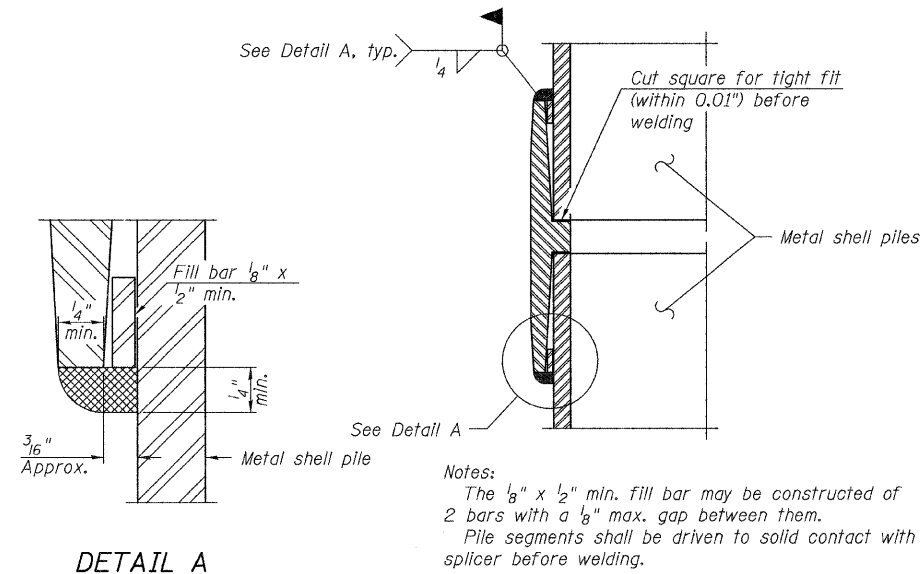
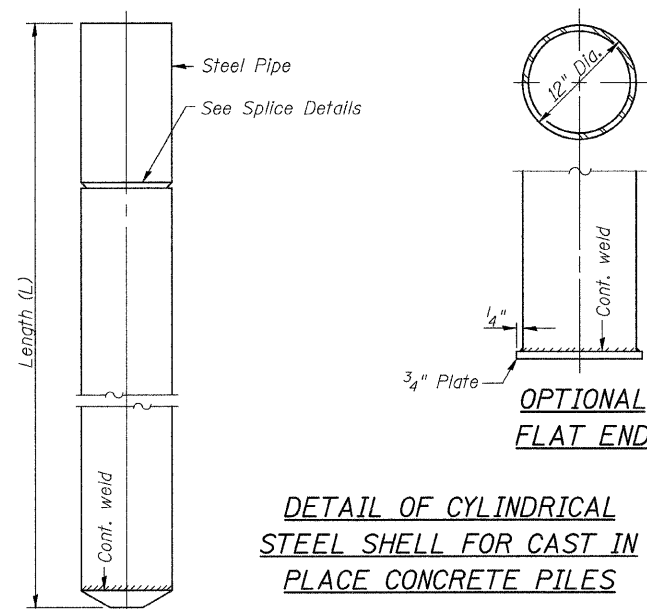
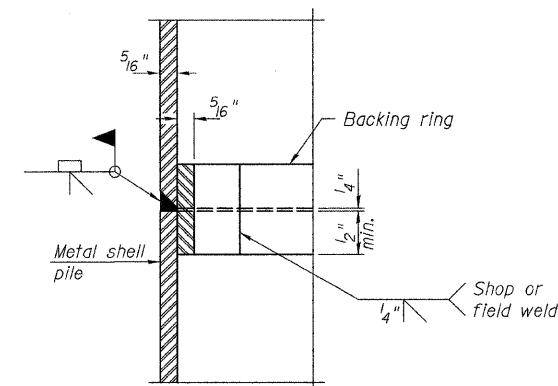


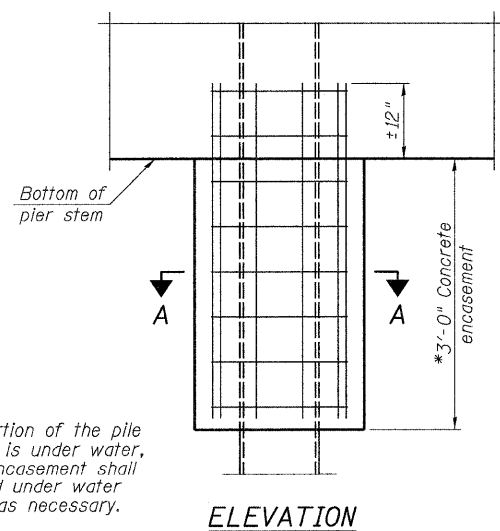
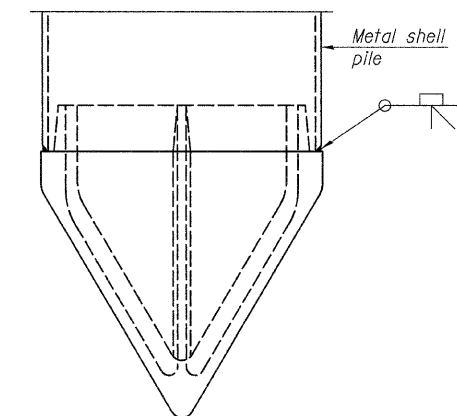
Notes: Driving and bearing ends of pipe shall be cut square. The thickness of the shell shall be 0.25 inches with a tolerance of 5%. The shell shall be according to Article 1006.05(a) of the Standard Specifications, and shall be ASTM A252 Grade 3.



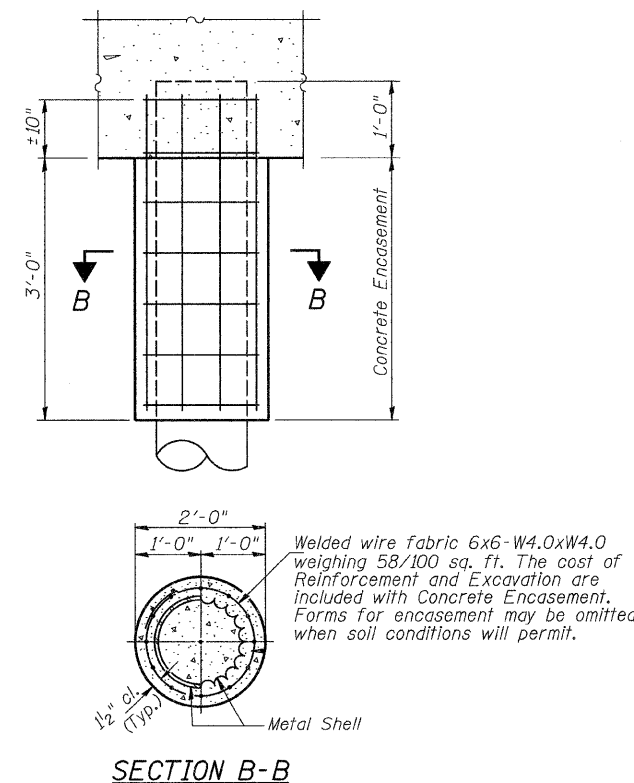
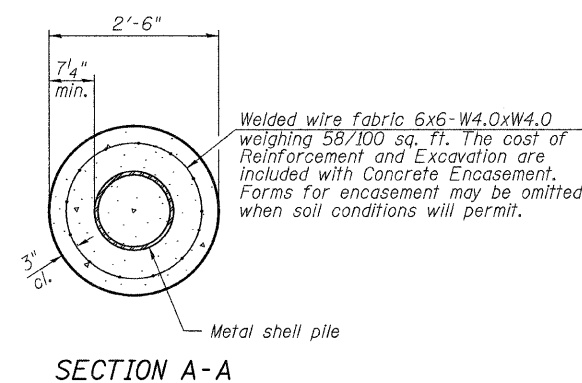
WELDED COMMERCIAL SPLICE



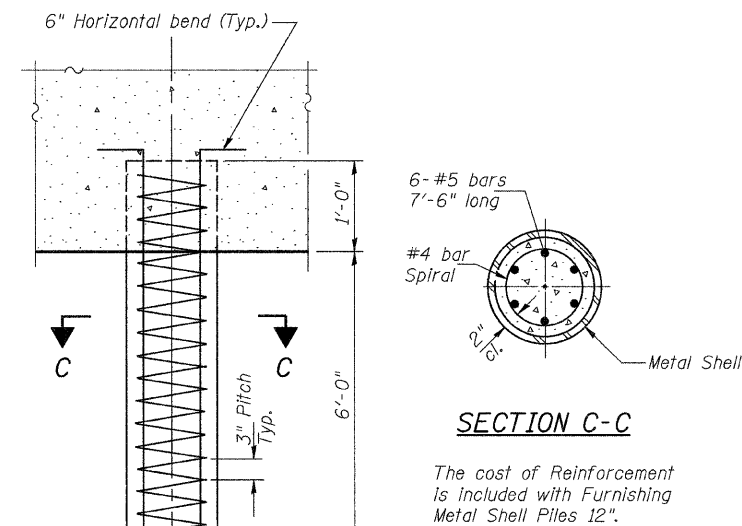
METAL SHELL PILE SHOE ATTACHMENT



DETAIL OF PROTECTION FOR METAL SHELLS AT PIERS



DETAIL OF METAL SHELL PILE ENCASEMENT AT ABUTMENTS



DETAIL OF REINFORCEMENT FOR METAL SHELLS AT ABUTMENTS

PILE DETAILS
COUNTY HIGHWAY 32
OVER NORTH FORK
MAUVAISE TERRE CREEK
SECTION 07-00098-00-BR
MORGAN COUNTY
STATION 20+00.00