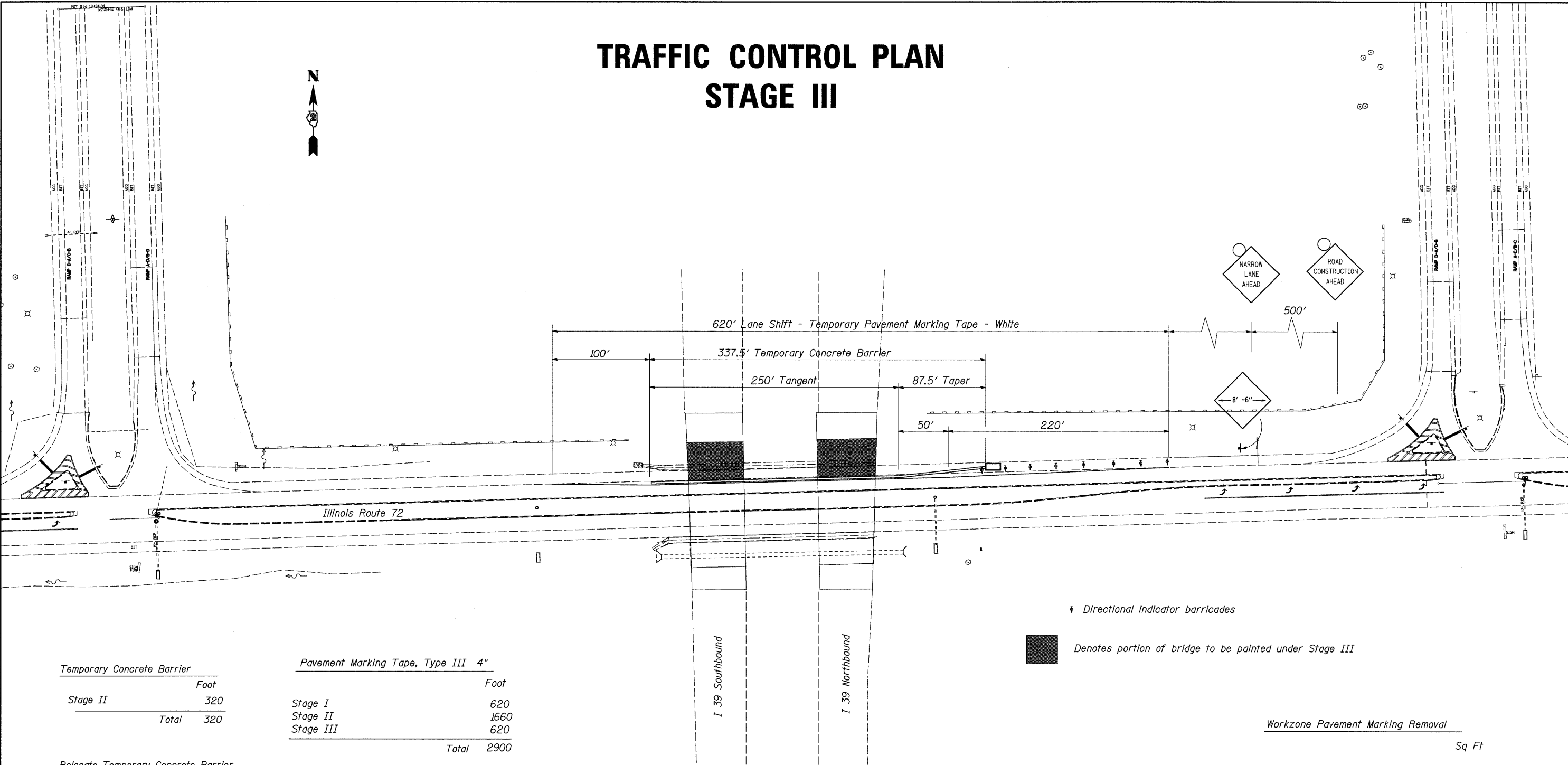


TRAFFIC CONTROL PLAN
STAGE III



Directional indicator barricades

Denotes portion of bridge to be painted under Stage III

Temporary Concrete Barrier	
	Foot
Stage II	320
Total	320
Relocate Temporary Concrete Barrier	
	Foot
Tapers	140
Temporary Storage	320
Total	460
Paint Pavement Marking - Line 4"	
	Foot
Post Project	
Eastbound	785
Westbound	875
Total	1660

Pavement Marking Tape, Type III 4"	
	Foot
Stage I	620
Stage II	1660
Stage III	620
Total	2900
Pavement Marking Removal	
	Sq Ft
Stage II	
Eastbound	260
Westbound	225
Total	485

Temporary Impact Attenuators	
	Each
Stage II	2
Total	2

Relocate Temporary Impact Attenuators	
	Each
Stage I or III	2
Total	2

Workzone Pavement Marking Removal	
	Sq Ft
Stage I	175
Stage II	560
Stage III	175
Total	910

* D2 BRIDGE PAINTING 2008-2