

STATE OF ILLINOIS
DEPARTMENT OF TRANSPORTATION

F.A.P. ATE.	SECTION	COUNTY	TOTAL SHEETS	SHEET NO.
554	(18) CR, (18G) CR-1	BROWN/PIKE	9	1
		ILLINOIS	CONTRACT NO. 72L61	

FOR INDEX OF SHEETS, SEE SHEET NO. 2

PROPOSED IMPROVEMENTS

FAP 554 (IL 107)
SECTION (18) CR, (18G) CR-1
REPLACE CMP CULVERTS

BROWN/PIKE CO.
C-96-046-20

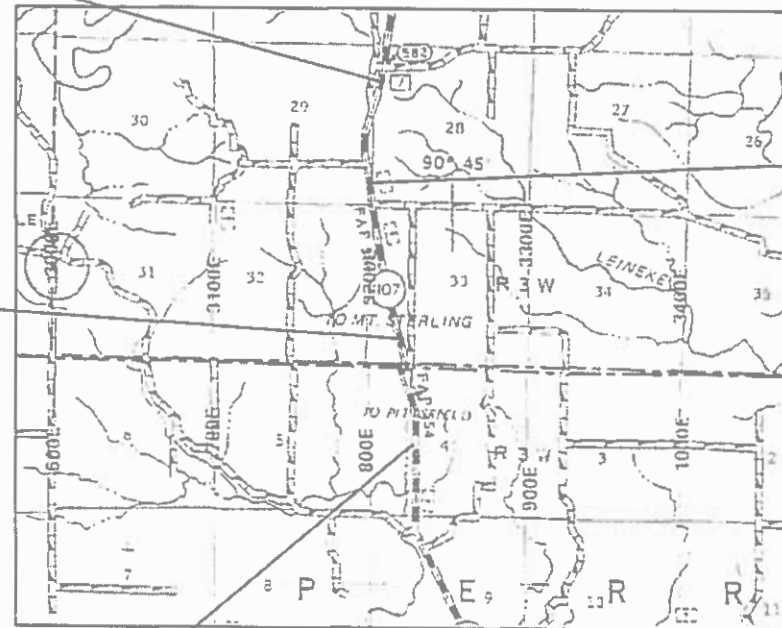
IL 107 (2019)
ADT = 750
SU = 100
MU = 90



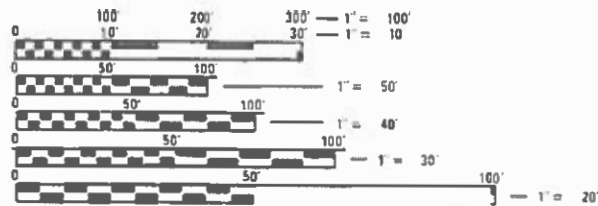
LOCATION #1
STA. 442+00

LOCATION #3
STA. 529+74

LOCATION #4
STA. 562+93



LOCATION #2
STA. 478+95



FULL SIZE PLANS HAVE BEEN PREPARED USING STANDARD ENGINEERING SCALES. REDUCED SIZED PLANS WILL NOT CONFORM TO STANDARD SCALES. IN MAKING MEASUREMENTS ON REDUCED PLANS, THE ABOVE SCALES MAY BE USED.

JULIE
JOINT UTILITY LOCATION INFORMATION FOR EXCAVATION
1-800-892-0123
OR 811

PROJECT ENGINEER : MIKE IRWIN - (217)524-7765
PROJECT MANAGER : TIM SHARP - (217)524-9160

CONTRACT NO. 72L61

STATE OF ILLINOIS
DEPARTMENT OF TRANSPORTATION

SUBMITTED February 16, 2020
July 2020
March 2020
See E.A. Elk
August 2020
Gamm, Jan 13

REGION FOUR ENGINEER
ENGINEER OF DESIGN AND ENVIRONMENT
DIRECTOR OF HIGHWAYS PROJECT IMPLEMENTATION

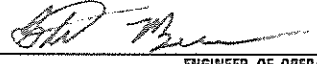
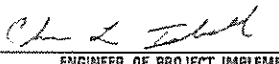
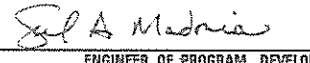
PRINTED BY THE AUTHORITY OF THE STATE OF ILLINOIS

INDEX OF SHEETS

SHEET NO.	DESCRIPTION
1.	COVER SHEET
2.	INDEX OF SHEETS, STANDARDS, GENERAL NOTES & SIGNATURE
3.	SUMMARY OF QUANTITIES
4.	SCHEDULE OF QUANTITIES
5-8.	PROJECT LOCATION MAP
9.	TYPICAL SECTIONS

STANDARDS

STANDARD NO.	DESCRIPTION
542301-03	PRECAST REINFORCED CONCRETE FLARED END SECTION
701001-02	OFF-RD OPERATIONS, 2L, 2W, MORE THAN 15' AWAY
701006-05	OFF-RD OPERATIONS, 2L, 2W, 15' TO 24" FROM PAVEMENT EDGE
701011-04	OFF-RD MOVING OPERATIONS, 2L, 2W, DAY ONLY
701201-05	LANE CLOSURE, 2L, 2W, DAY ONLY, FOR SPEEDS \geq 45 MPH
701901-08	TRAFFIC CONTROL DEVICES

STATE OF ILLINOIS DEPARTMENT OF TRANSPORTATION DIVISION OF HIGHWAYS DISTRICT 6	
EXAMINED _____ 20 _____	
	ENGINEER OF OPERATIONS
EXAMINED _____ 20 _____	
	ENGINEER OF PROJECT IMPLEMENTATION
EXAMINED _____ 20 _____	
	ENGINEER OF PROGRAM DEVELOPMENT

CODE NO.	ITEM	UNIT	TOTAL QUANTITY	0-02174-6022	0-02174-6022
				CONSTR. CODE	CONSTR. CODE
				100 STATE BROWN	100 STATE PIKE
				PIPE CULVERT	PIPE CULVERT
				0004	0004
				RURAL	RURAL
20800150	TRENCH BACKFILL	CU YD	250	200	50
44201389	CLASS C PATCHES, TYPE II, 13 INCH	SQ YD	69	47	22
44201396	CLASS C PATCHES, TYPE IV, 13 INCH	SQ YD	94	94	0
50104400	CONCRETE HEADWALL REMOVAL	EACH	8	6	2
50105220	PIPE CULVERT REMOVAL	FOOT	206	164	42
542A0229	PIPE CULVERTS, CLASS A, TYPE 1 24"	FOOT	79	37	42
542A0235	PIPE CULVERTS, CLASS A, TYPE 1 30"	FOOT	57	57	0
542A1075	PIPE CULVERTS, CLASS A, TYPE 2 30"	FOOT	70	70	0
54213669	PRECAST REINFORCED CONCRETE FLARED END SECTIONS 24"	EACH	4	2	2
54213675	PRECAST REINFORCED CONCRETE FLARED END SECTIONS 30"	EACH	4	4	0
67100100	MOBILIZATION	L SUM	1	0.5	0.5
70100450	TRAFFIC CONTROL AND PROTECTION, STANDARD 701201	L SUM	1	0.5	0.5

FILE NAME =	USER NAME = sharptd	DESIGNED -	REVISED -
S:\CONTRMAINT_CAD\72L61 - FAP 554 (IL 107) - (18) CR, (18G) CR-1 - CULVERT REPLACEMENT VP		DRAWN -	REVISED -
Default	PLOT SCALE = 40.0000' / in.	CHECKED -	REVISED -
	PLOT DATE = 2/20/2020	DATE -	REVISED -

**STATE OF ILLINOIS
DEPARTMENT OF TRANSPORTATION**

SUMMARY OF QUANTITIES

SCALE: _____ SHEET _____ OF _____ SHEETS STA. _____ TO STA. _____

F.A.P. RTE.	SECTION	COUNTY	TOTAL SHEETS	SHEET NO.
554	(18) CR, (18G) CR-1	BROWN/PIKE	9	3
CONTRACT NO. 72L61			ILLINOIS FED. AID PROJECT	



EXIST. CMP 37 L.F.
0° SKEW
AND HEADWALL
TO BE REMOVED

LOCATION #1
STA. 442+00
PIPE CULVERT 24",
CLASS A, TY. 1, 37 L.F.
PRCFES 24"
0 ° SKEW
NOTE: FIT TO FIELD CONDITIONS

FILE NAME =
S:\CONTRMAINT\CAD\72L61 - FAP 554 (IL 10
Default

USER NAME = sharptd
1181 CR, 1180 CR-1 - CULVERT REPLACEMENT
PLOT SCALE = 40,0000 / in.
PLOT DATE = 2/6/2020

DESIGNED -
DRAWN -
CHECKED -
DATE -

REVISED -
REVISED -
REVISED -
REVISED -

**STATE OF ILLINOIS
DEPARTMENT OF TRANSPORTATION**

LOCATION MAP

SCALE: _____ SHEET _____ OF _____ SHEETS STA. _____ TO STA. _____

F.A.P. RTE.	SECTION	COUNTY	TOTAL SHEETS	SHEET NO.
554	1181 CR, 1180 CR-1	BROWN/PIKE	9	5
CONTRACT NO. 72L61				
<small>ILLINOIS FED. AID PROJECT</small>				



LOCATION #2
 STA. 478+95
 PIPE CULVERT 30",
 CLASS A, TY. 1, 57 L.F.
 0 ° SKEW
 PRCFES 30"
 NOTE: FIT TO FIELD CONDITIONS

EXIST. CMP 57 L.F.
 0° SKEW
 AND HEADWALL
 TO BE REMOVED

FILE NAME =	USER NAME = sharptd	DESIGNED -	REVISED -	STATE OF ILLINOIS DEPARTMENT OF TRANSPORTATION	LOCATION MAP		F.A.P. RTE.	SECTION	COUNTY	TOTAL SHEETS	SHEET NO.
S:\CONTRMAINT\CAD\72L61 - FAP 554 ILL	118) CR. (180) CR-1 - CULVERT REPLACEMENT	DESIGNED -	REVISED -				554	(18) CR. (180) CR-1	BROWN/PIKE	9	6
Default	PLOT SCALE = 40.0000' / 1"	CHECKED -	REVISED -		SCALE: SHEET OF SHEETS STA. TO STA.		CONTRACT NO. 72L61				
	PLOT DATE = 2/6/2020	DATE -	REVISED -		ILLINOIS FED. AID PROJECT						



LOCATION #3
 STA. 529+74
 PIPE CULVERT 30",
 CLASS A, TY. 2, 70 L.F.
 25°SKEW
 PRCFES 30"
 NOTE: FIT TO FIELD CONDITIONS

EXIST. CMP 70 L.F.
 25° SKEW
 AND HEADWALL
 TO BE REMOVED

FILE NAME =	USER NAME = sharptd	DESIGNED -	REVISED -	STATE OF ILLINOIS DEPARTMENT OF TRANSPORTATION	LOCATION MAP		F.A.P. RTE.	SECTION	COUNTY	TOTAL SHEETS	SHEET NO.
S:\CONTRACTS\72L61 - FAP 554 ILL 10	118' CR, (180) CR-1 - CULVERT REPLACEMENT	DRAWING: sh-s-B-plans.dgn	REVISED -		554	(18) CR, (180) CR-1	BROWN/PIKE	9	7		
Default	PLOT SCALE = 40.0000 / in.	CHECKED -	REVISED -		CONTRACT NO. 72L61						
	PLOT DATE = 2/6/2020	DATE -	REVISED -		ILLINOIS FED. AID PROJECT						
				SCALE:	SHEET	OF	SHEETS	STA.	TO	STA.	



location 4

LOCATION #4
 STA. 562+93
 PIPE CULVERT 24",
 CLASS A, TY. 1, 42 L.F.
 0° SKEW
 PRCFES 24"
 NOTE: FIT TO FIELD CONDITIONS

EXIST. CMP 42 L.F.
 0° SKEW
 AND HEADWALL
 TO BE REMOVED

FILE NAME = S:\CONTRACTMAINT\CAD\72L61 - FAP 554 ILL
 USER NAME = shorptd
 DESIGNED -
 REVISIONS: shorptd
 CHECKED -
 DATE -
 PLOT SCALE = 40,0000 / in.
 PLOT DATE = 2/6/2020

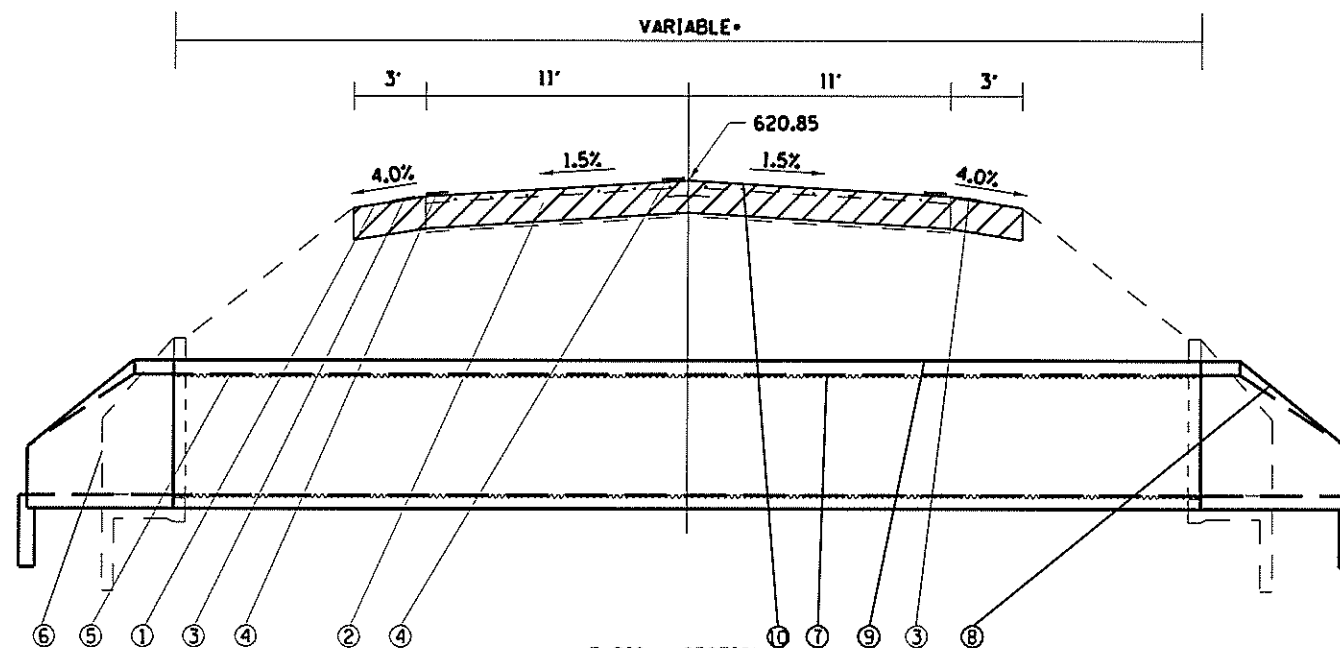
DESIGNED -	REVISED -
REVISIONS: shorptd	REVISED -
CHECKED -	REVISED -
DATE -	REVISED -

STATE OF ILLINOIS
 DEPARTMENT OF TRANSPORTATION

LOCATION MAP
 SCALE: SHEET OF SHEETS STA. TO STA.

F.A.P. RTE.	SECTION	COUNTY	TOTAL SHEETS	SHEET NO.
554	110 CR, 110C CR-1	BROWN/PIKE	9	8
				CONTRACT NO. 72L61
ILLINOIS FED. AID PROJECT				

€
OLD ROUTE 54/36



TYPICAL SECTION
 •STA. 442+00 - 37 L.F.
 •STA. 578+95 - 57 L.F.
 •STA. 529+74 - 70 L.F.
 •STA. 562+93 - 42 L.F.

LEGEND

- ① EXIST. HMA SHOULDERS, 8"
- ② EXIST. PCC PAVEMENT, 9"
- ③ EXIST. RUMBLE STRIP
- ④ EXIST. PAVEMENT MARKING-LINE, 5"
- ⑤ EXIST. PIPE CULVERTS, TY. 1 (RCCP), 30"
- ⑥ EXIST. CONC. HEADWALLS FOR PIPE DRAINS
- ⑦ PROP. PIPE CULVERT REMOVAL
- ⑧ PROP. PRECAST REINFORCED CONCRETE FLARED END SECTIONS, 24" & 30"
(FIT TO FIELD CONDITIONS)
- ⑨ PROP. PIPE CULVERTS, CLASS A, TY. 1 & 2, 24" & 30" (FIT TO FIELD CONDITIONS)
- ⑩ PROP. CLASS C PATCHES, TYPE II

NOTES:

1. THE ROAD LANE SHALL BE KEPT OPEN TO TRAFFIC ACCORDING TO ARTICLE 701.17(e). NO BROKEN PAVEMENT, OPEN HOLES, OR PARTIALLY FILLED PATCHES SHALL REMAIN OVERNIGHT AND ALL DEVICES SHALL BE REMOVED BEFORE DARK. USE TEMPORARY PATCHES OF 6 INCHES OF COLD BITUMINOUS MIX TO MATCH THE EXISTING SURFACE AS NEEDED. THIS WORK WILL BE CONSIDERED AS INCIDENTAL.
2. ALL THE NEW PIPE CULVERTS SHALL BE INSTALLED SATISFYING THE FIELD CONDITIONS.

MODEL NUMBER: FILE NAME: S:\COURTMONIT\CAD\2161 - EAP 554 IL 2021 - (18) CR, (18G) CR-1 - CULVERT REPLACEMENT\PLANS\2161.dwg, PLOT DATE: 2/6/2020

USER NAME = sharpd	DESIGNED -	REVISED -
PLOT SCALE = 40 0000 / in.	DRAWN -	REVISED -
PLOT DATE = 2/6/2020	CHECKED -	REVISED -
	DATE -	REVISED -

**STATE OF ILLINOIS
DEPARTMENT OF TRANSPORTATION**

TYPICAL SECTIONS	
SCALE	SHEET OF SHEETS STA. TO STA.

F.A.P. RTE.	SECTION	COUNTY	TOTAL SHEETS	SHEET NO.
554	(18) CR, (18G) CR-1	BROWN/SCOTT	9	9
CONTRACT NO. 72L61				
ILLINOIS FED. AID PROJECT				