

STATE OF ILLINOIS
DEPARTMENT OF TRANSPORTATION

F.A.I. RTE.	SECTION	COUNTY	TOTAL SHEETS	NO.
474	172-3,4)PP,RS-2	PEORIA	16	1
		ILLINOIS	CONTRACT NO. 68E88	

INDEX OF SHEETS:

- 1 COVER SHEET
- 2 COMMITMENTS AND GENERAL NOTES
- 3 SUMMARY OF QUANTITIES
- 4 LINE DIAGRAM
- 5 SCHEDULE OF QUANTITIES
- 6 EXISTING TYPICAL SECTION
- 7-16 RAMP CLOSURE DETOUR

DISTRICT STANDARDS:

- 701451-05
- 701456-05
- 701901-08
- 780001-05

I-474 /AIRPORT RD ADT

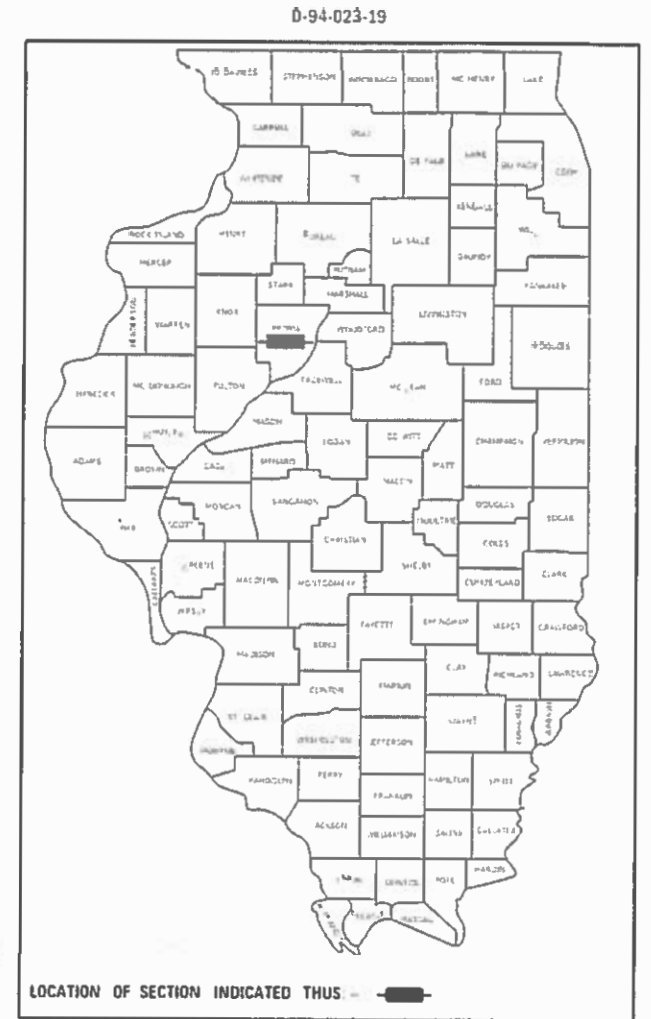
- RAMP A = 3100
- RAMP B = 3250
- RAMP C = 3450
- RAMP D = 3150

I-474 /US 24 ADT

- RAMP A = 5100
- RAMP B = 1200
- RAMP C = 2650
- RAMP D = 5100
- RAMP E = 1100
- RAMP F = 2650

PROPOSED HIGHWAY PLANS

FAI ROUTE 474 (I-474)
SECTION (72-3,4)PP,RS-2
TYPE of IMPROVEMENT: CONTRACT MAINTENANCE
PEORIA COUNTY



PROJECT DESCRIPTION:

PARTIAL DEPTH PATCHING ON I-474 /AIRPORT ROAD AND I-474 /US 24 INTERCHANGES IN PEORIA COUNTY

STATE OF ILLINOIS
DEPARTMENT OF TRANSPORTATION

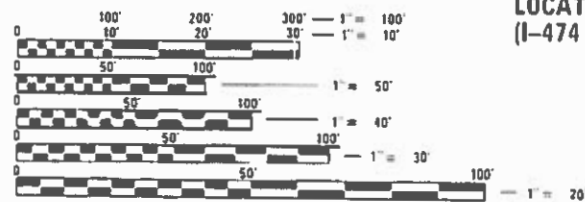
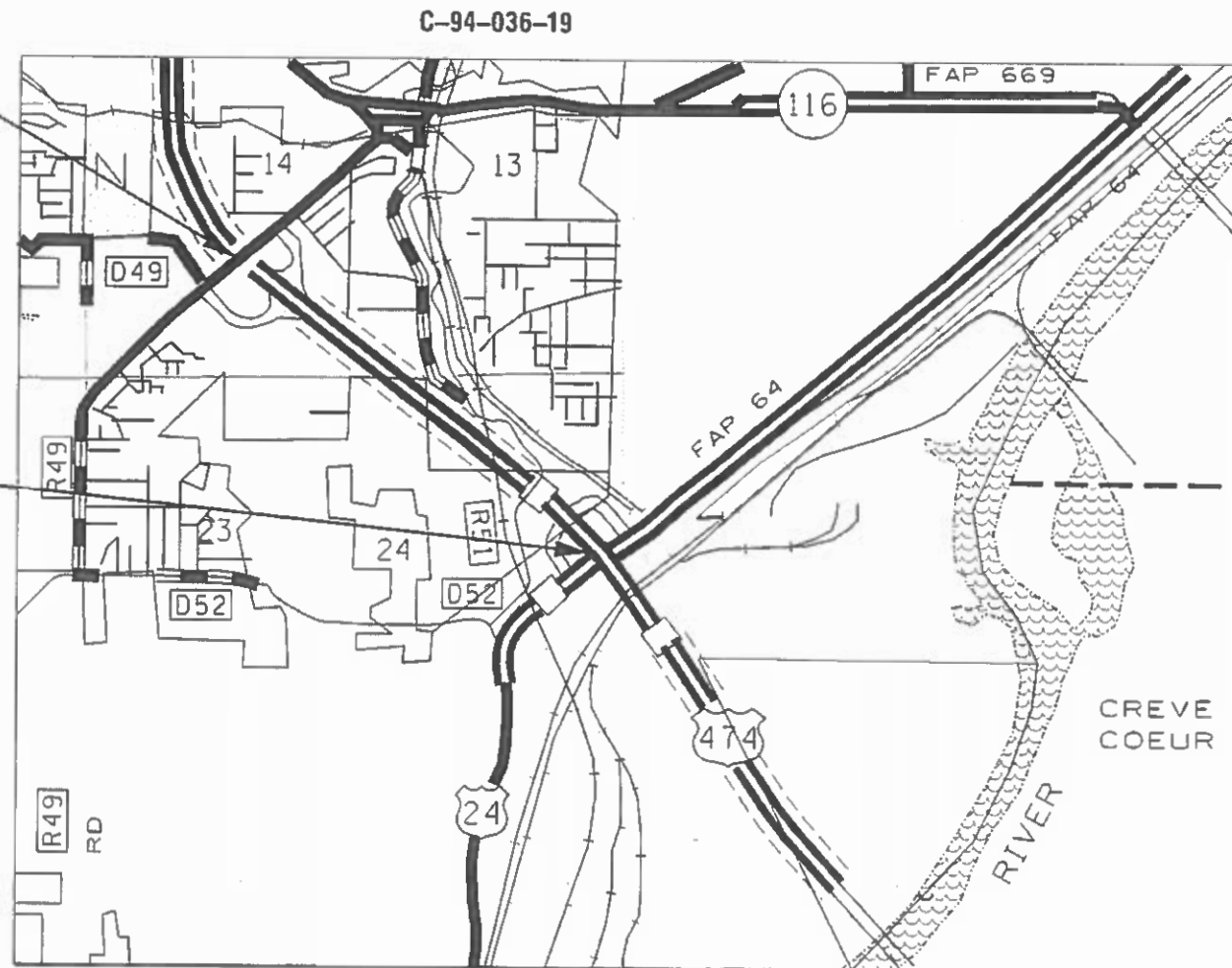
SUBMITTED Feb 07 20 20
Kensel A. Darnett 1550
REGIONAL ENGINEER

March 20 20 20
ENGINEER OF DESIGN AND ENVIRONMENT

March 20 20 20
DIRECTOR OF HIGHWAYS PROJECT IMPLEMENTATION 13

LOCATION 1
(I-474 & AIRPORT RD INTERCHANGE)

LOCATION 2
(I-474 & US 24 INTERCHANGE)



FULL SIZE PLANS HAVE BEEN PREPARED USING STANDARD ENGINEERING SCALES. REDUCED SIZED PLANS WILL NOT CONFORM TO STANDARD SCALES. IN MAKING MEASUREMENTS ON REDUCED PLANS, THE ABOVE SCALES MAY BE USED.

J.U.L.I.E.
JOINT UTILITY LOCATION INFORMATION FOR EXCAVATION
1-800-892-0123
OR 811

PROJECT ENGINEER: RICH DOTSON (309)671-3455
PROJECT MANAGER: MIKE JACOBS (309)671-3460

CATALOG # 035724-00D
CONTRACT NO. 68E88

GROSS LENGTH = 15431 FT. = 2.92 MILE
NET LENGTH = 15431 FT. = 2.92 MILE

PRINTED BY THE AUTHORITY
OF THE STATE OF ILLINOIS

COMMITMENTS

Commitments are not to be altered without the written approval of all parties to which the commitment was made.

NO COMMITMENTS HAVE BEEN MADE FOR THIS PROJECT

ENVIRONMENTAL REVIEWS

Prior to the use of any proposed borrow areas, use areas (temporary access roads, detours, run-arounds, etc.) and/or waste areas, the Contractor shall file the required environmental resource request surveys according to Section 107.22 of the Standard Specifications. These surveys are required in order for the Department to conduct cultural and biological resource surveys for the proposed site.

The required environmental resource documentation shall include the following:

- * BDE Form 2289 (Cultural and Natural Resources Review of Borrow Areas)
- * BDE Form 2290 (Waste/Use Area Review)
- * A location map showing the size limits and location of the use area
- * Color photographs depicting the use area
- * Borrow Area Entry Agreement form – D4 PI0101

Prior to any waste materials being removed from the construction site the required environmental resource surveys shall be obtained and filed by the Contractor. Excess waste products removed from the construction site shall be disposed of as required in Section 202.03 of the Standard Specifications.

Any protruding metal bars shall be removed prior to the disposal of broken concrete at approved disposal sites.

Please note that a minimum of four weeks shall be allowed for the District to obtain the required environmental clearances and six weeks for the required borrow site environmental clearances.

HOT-MIX ASPHALT MIXTURE REQUIREMENTS

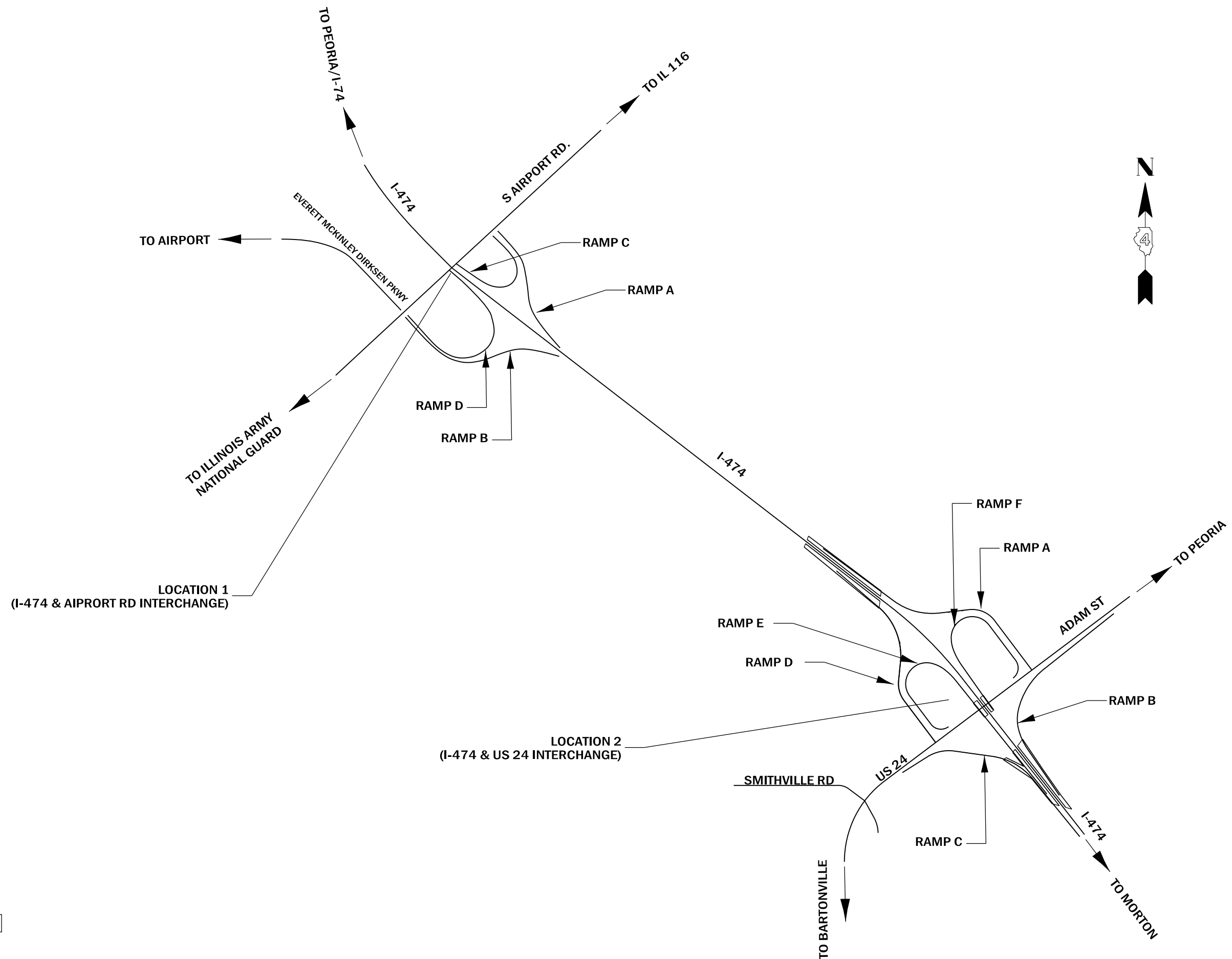
Mixture Use(s):	Patching
AC/PC:	PG 64-22
Design Air Voids:	4% N = 50
Mixture Composition: (Gradation Mixture):	IL 9.5
Friction Aggregate:	Mix C
Quality Management:	QC/QA

Notes:

- 1) Individual lift thickness of each mix type will be no less than 3 times nominal maximum aggregate size and no more than 6 times nominal maximum.
- 2) For design purposes, mixture weight for all mixes is determined to be 112.0 lb/s.y/in., unless otherwise noted.
- 3) Sublot sizes for PFP and QCP mixes will be 1,000 tons, unless otherwise agreed to by the Engineer and the paving Contractor.

MODEL: Default
 FILE: Model: P:\pub\barrom.dwg
 I:\links\gov\PIW\DOT\Documents\DOT_Offices\District_4\Projects\IDA_68E88\CAD\Drawings\PIW\ID4xxxx-CADD.dwg

USER NAME = greendm	DESIGNED -	REVISED -	STATE OF ILLINOIS DEPARTMENT OF TRANSPORTATION	COMMITMENTS; GENERAL NOTES; JOB SPECIFICS	F.A.J. RTE.	SECTION	COUNTY	TOTAL SHEETS	SHEET NO.
DRAWN -	REVISED -	474			(72-3,4)PP,RS-2	PEORIA	16	2	
PLOT SCALE = 100,0000' / in.	CHECKED -	REVISED -			CONTRACT NO. 68E88				
PLOT DATE = 2/6/2020	DATE -	REVISED -			SCALE:	SHEET OF SHEETS	STA. TO STA.	ILLINOIS FED. AID PROJECT	



LOCATION 1
(I-474 & AIRPORT RD INTERCHANGE)

LOCATION 2
(I-474 & US 24 INTERCHANGE)

NOT TO SCALE

MODEL: Default
 FILE: Model_C:\pub\baronm\dat\illinois\gov\PIV\DOT\Documents\DOT_Offices\District_4\Projects\ID4_68E88\CADD\Drawings\ID4xxxx-CADD.dgn

USER NAME = greendm	DESIGNED -	REVISED -
	DRAWN -	REVISED -
PLOT SCALE = 100,0000' / in.	CHECKED -	REVISED -
PLOT DATE = 2/6/2020	DATE -	REVISED -

**STATE OF ILLINOIS
DEPARTMENT OF TRANSPORTATION**

LINE DIAGRAM

SCALE: SHEET OF SHEETS STA. TO STA.

F.A.J. RTE.	SECTION	COUNTY	TOTAL SHEETS	SHEET NO.
474	(72-3,4)PP,RS-2	PEORIA	16	4
CONTRACT NO. 68E88			ILLINOIS FED. AID PROJECT	

PARTIAL DEPTH PATCHING 2" (I-474 / AIRPORT ROAD)					
LOCATION	LENGTH	WIDTH	NUMBER OF PATCHES	PARTIAL DEPTH PATCHING (SPECIAL)	PARTIAL DEPTH PATCHING (SYx112x2") /2000
	FOOT	FOOT		SQ YD	TONS
RAMP A	60	16	1	106.7	11.9
	200	4	1	88.9	10.0
	80	16	1	142.2	15.9
	20	4	2	17.8	2.0
	20	6	1	13.3	1.5
	400	4	1	177.8	19.9
	40	16	1	71.1	8.0
	40	4	1	17.8	2.0
	380	4	1	168.9	18.9
RAMP B	16	6	4	42.7	4.8
	440	4	1	195.6	21.9
	40	16	1	71.1	8.0
	240	4	1	106.7	11.9
	30	16	1	53.3	6.0
	40	4	1	17.8	2.0
	30	4	2	26.7	3.0
RAMP C	50	16	1	88.9	10.0
	60	16	1	106.7	11.9
	80	6	1	53.3	6.0
	40	20	1	88.9	10.0
	60	6	1	40.0	4.5
	6	16	4	42.7	4.8
	20	16	1	35.6	4.0
	30	16	1	53.3	6.0
	200	4	1	88.9	10.0
RAMP D	100	4	1	44.4	5.0
	240	4	1	106.7	11.9
	250	4	1	111.1	12.4
	20	16	2	71.1	8.0
	80	16	1	142.2	15.9
	30	16	1	53.3	6.0
	10	16	1	17.8	2.0
	400	4	1	177.8	19.9
	50	4	1	22.2	2.5
200	16	1	355.6	39.8	
100	16	2	355.6	39.8	
250	4	1	111.1	12.4	
LOCATION 1 TOTAL				3485.3	390.4

PARTIAL DEPTH PATCHING 2" (I-474 / US 24)						
LOCATION	LENGTH	WIDTH	NUMBER OF PATCHES	PARTIAL DEPTH PATCHING (SPECIAL)	PARTIAL DEPTH PATCHING (SYx112x2") /2000	
	FOOT	FOOT		SQ YD	TONS	
RAMP A	100	16	2	355.6	39.8	
	80	6	1	53.3	6.0	
	60	4	2	53.3	6.0	
	20	6	1	13.3	1.5	
	200	4	2	177.8	19.9	
	30	6	2	40.0	4.5	
	100	6	1	66.7	7.5	
	6	16	1	10.7	1.2	
	10	6	1	6.7	0.7	
	220	4	1	97.8	11.0	
	160	4	1	71.1	8.0	
	RAMP B	30	16	1	53.3	6.0
		40	16	1	71.1	8.0
		60	16	1	106.7	11.9
520		4	1	231.1	25.9	
RAMP C	80	6	1	53.3	6.0	
	40	4	3	53.3	6.0	
	6	16	1	10.7	1.2	
RAMP D	60	4	1	26.7	3.0	
	100	4	2	88.9	10.0	
	60	4	1	26.7	3.0	
	30	16	2	106.7	11.9	
	80	16	1	142.2	15.9	
	20	6	2	26.7	3.0	
	80	4	1	35.6	4.0	
	40	6	1	26.7	3.0	
	40	20	1	88.9	10.0	
	40	16	1	71.1	8.0	
RAMP E	30	4	1	13.3	1.5	
	140	4	1	62.2	7.0	
	200	4	1	88.9	10.0	
	80	4	1	35.6	4.0	
	20	4	1	8.9	1.0	
	40	4	1	17.8	2.0	
	40	6	1	26.7	3.0	
	60	4	1	26.7	3.0	
	200	16	1	355.6	39.8	
	80	4	2	71.1	8.0	
	20	16	1	35.6	4.0	
	6	16	1	10.7	1.2	
	200	4	1	88.9	10.0	
	30	16	1	53.3	6.0	
60	16	2	213.3	23.9		
60	4	1	26.7	3.0		
40	4	1	17.8	2.0		
LOCATION 2 TOTAL				3318.7	371.7	
PROJECT TOTAL				6804.0	762.0	

MOBILIZATION	
	LUMP SUM
JOBSITE	1
TOTAL	1

RPM REMOVAL	
	EACH
JOBSITE	25
TOTAL	25

TRAFFIC CONTROL AND PROTECTION STANDARD 701451	
	LUMP SUM
JOBSITE	1
TOTAL	1

TRAFFIC CONTROL AND PROTECTION STANDARD 701456	
	LUMP SUM
JOBSITE	1
TOTAL	1

TRAFFIC CONTROL AND PROTECTION (SPECIAL)	
	LUMP SUM
JOBSITE	1
TOTAL	1

PAINT PAVEMENT MARKING - LINE 4"			
LOCATION		LENGTH (FT)	
		LEFT EDGE	RIGHT EDGE
IL 474 & US 24	RAMP A	1834	1834
	RAMP B	779	779
	RAMP C	875	875
	RAMP D	1658	1658
	RAMP E	1397	1397
	RAMP F	1704	1704
	TOTAL	8247	8247
IL 474 & AIRPORT RD.	RAMP A	1500	1500
	RAMP B	1848	1848
	RAMP C	1124	1124
	RAMP D	1712	1712
	TOTAL	6184	6184
PROJECT TOTAL		28862	

MODEL: Default
 FILE: \\p1barnom.dta.illinois.gov\PIWDOT\Documents\DOT_Offices\IDirect_4\Projects\ID4_68E88\CAD\Drawings\CAD\Drawings\ID4xxxx-CADD.dwg

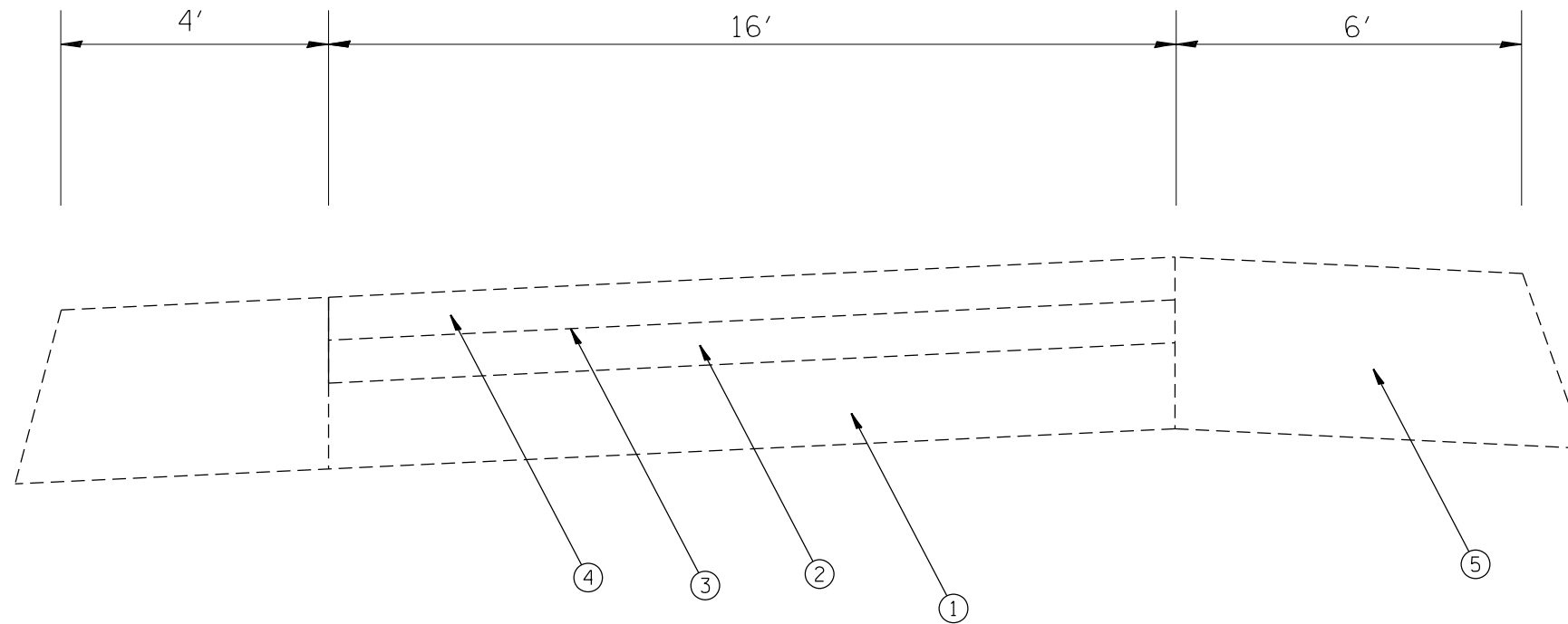
USER NAME = greendm	DESIGNED -	REVISED -
	DRAWN -	REVISED -
PLOT SCALE = 100.0000' / in.	CHECKED -	REVISED -
PLOT DATE = 2/6/2020	DATE -	REVISED -

**STATE OF ILLINOIS
DEPARTMENT OF TRANSPORTATION**

SCHEDULE OF QUANTITIES

SCALE: SHEET OF SHEETS STA. TO STA.

F.A.J. RTE.	SECTION	COUNTY	TOTAL SHEETS	SHEET NO.
474	(72-3,4)PP,RS-2	PEORIA	16	5
CONTRACT NO. 68E88			ILLINOIS FED. AID PROJECT	



RAMPS
 I-474 / US 24
 I-474 / AIRPORT ROAD

LEGEND

1. EX 10" STANDARD REINFORCED P.C.C. PAVEMENT
2. EX HMA BINDER 1.75"
3. EX AREA REFLECTIVE CRACK CONTROL
4. EX HMA SURFACE 1.5"
5. EX HMA SHOULDERS

MODEL: Default
 FILE: \\nlsr01\pub\lansom\dat\illinois\gov\PIWDOT\Documents\DOT_Offices\District_4\Projects\I-474_68E88\CADD\Drawings\I-474\I-474-RS-2-CADD.dgn

USER NAME = greendm	DESIGNED -	REVISED -
	DRAWN -	REVISED -
PLOT SCALE = 100.0000' / in.	CHECKED -	REVISED -
PLOT DATE = 2/6/2020	DATE -	REVISED -

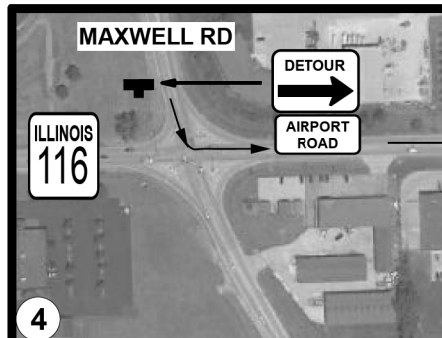
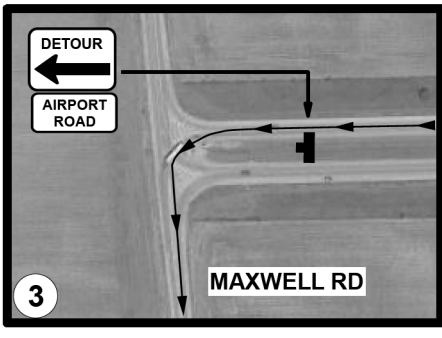
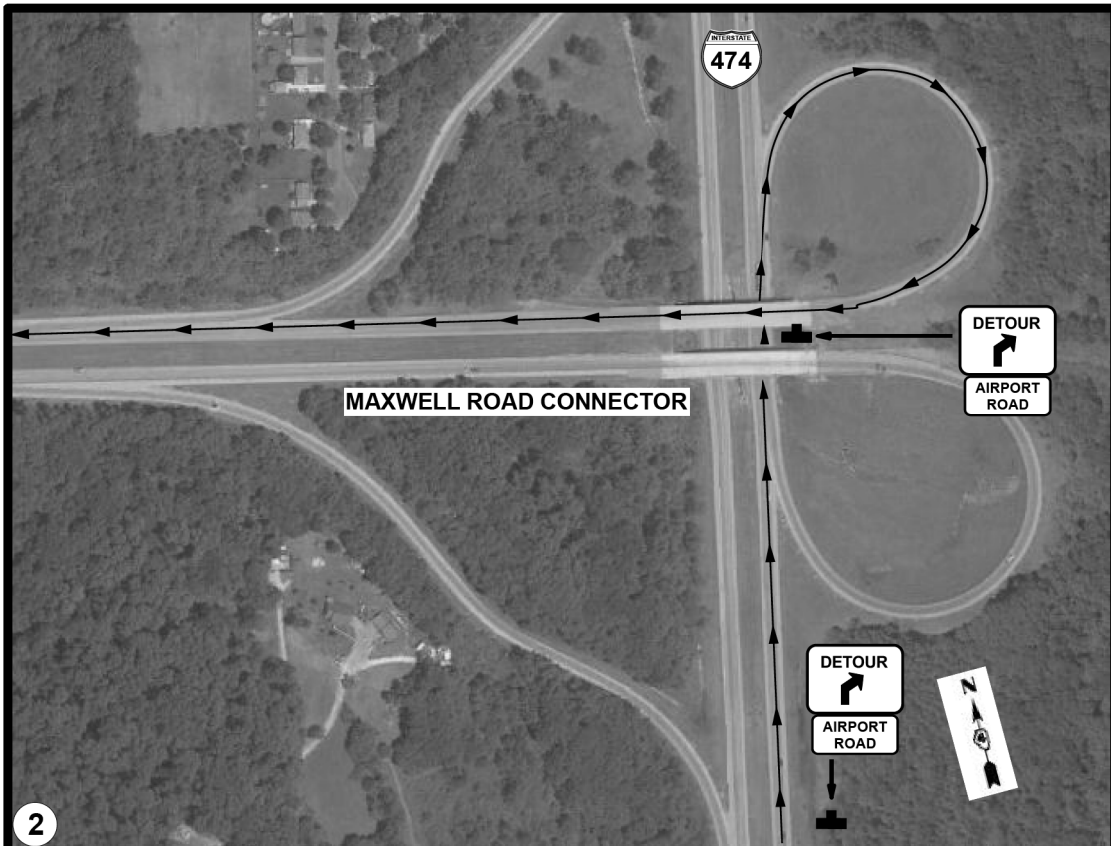
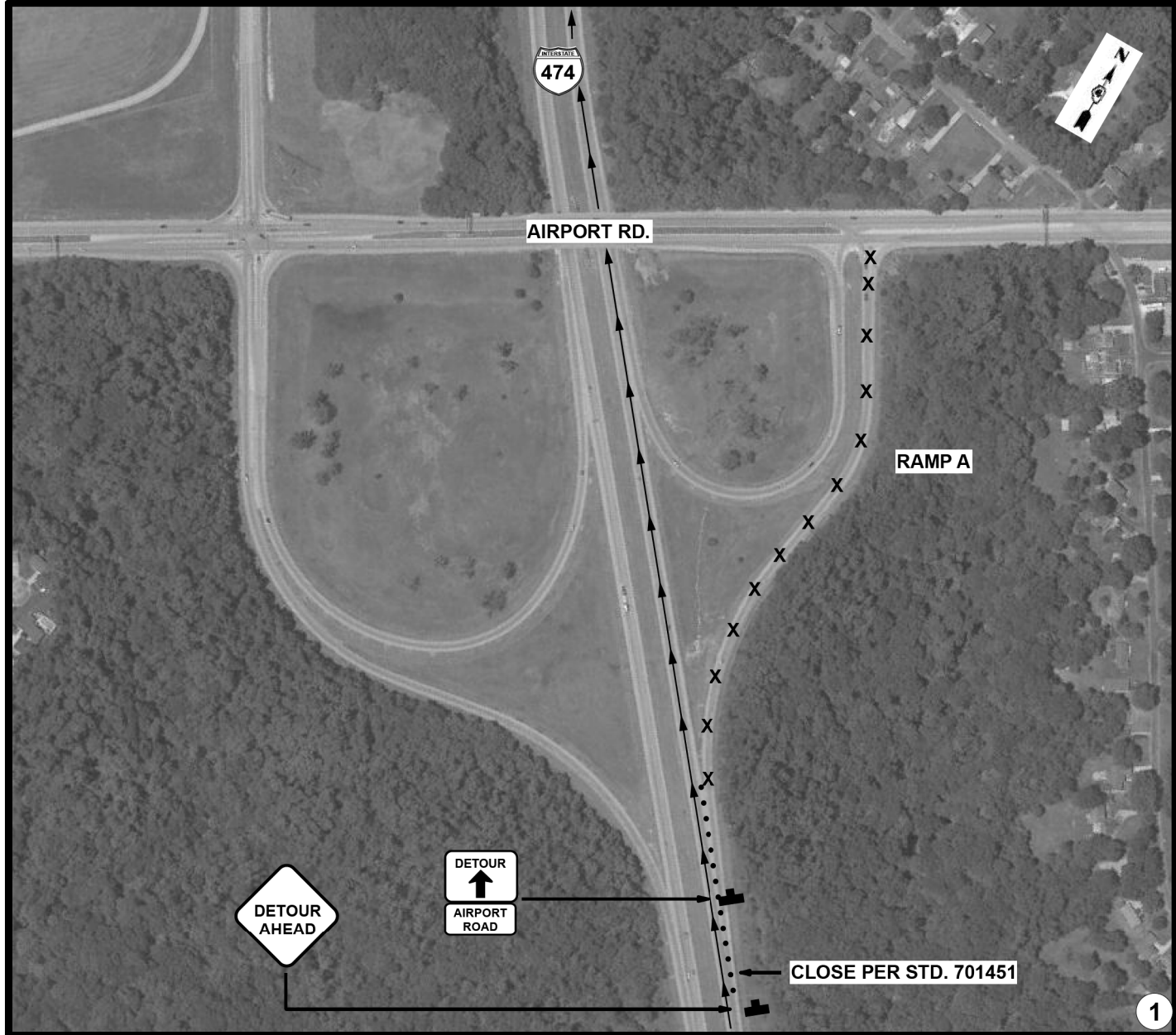
**STATE OF ILLINOIS
DEPARTMENT OF TRANSPORTATION**

EXISTING TYPICAL SECTION

SCALE: SHEET OF SHEETS STA. TO STA.

F.A.J. RTE.	SECTION	COUNTY	TOTAL SHEETS	SHEET NO.
474	(72-3,4)PP,RS-2	PEORIA	16	6
ILLINOIS			FED. AID PROJECT	
CONTRACT NO. 68E88				

AIRPORT RD.-RAMP A CLOSURE/DETOUR



MODEL: Default
 FILE: \\nas01c.pva.pulbar.com\data\illinois\pva\DOT\Documents\DOT_Offices\District_4\Projects\IDA_68E88\CADD\A\CAD\Drawings\IDxxxx-CADD.dgn

USER NAME = greendm	DESIGNED -	REVISED -
	DRAWN -	REVISED -
PLOT SCALE = 100,000' / in.	CHECKED -	REVISED -
PLOT DATE = 2/6/2020	DATE -	REVISED -

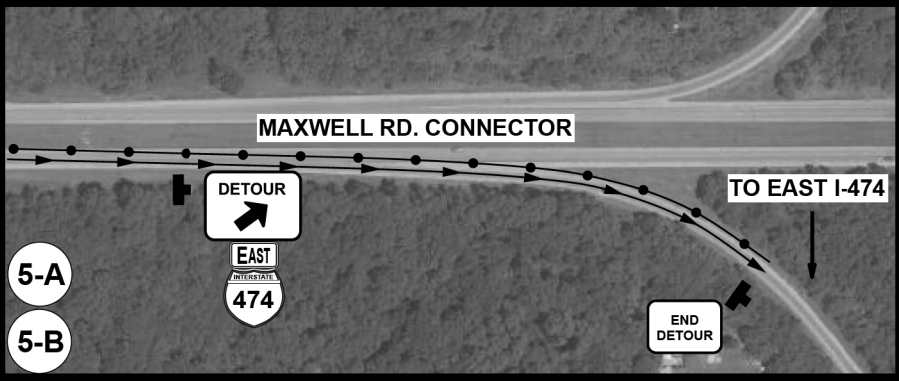
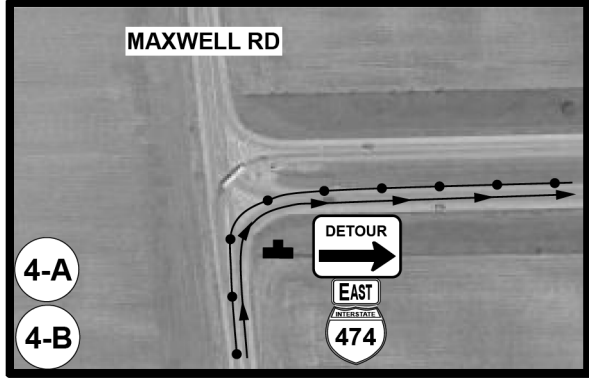
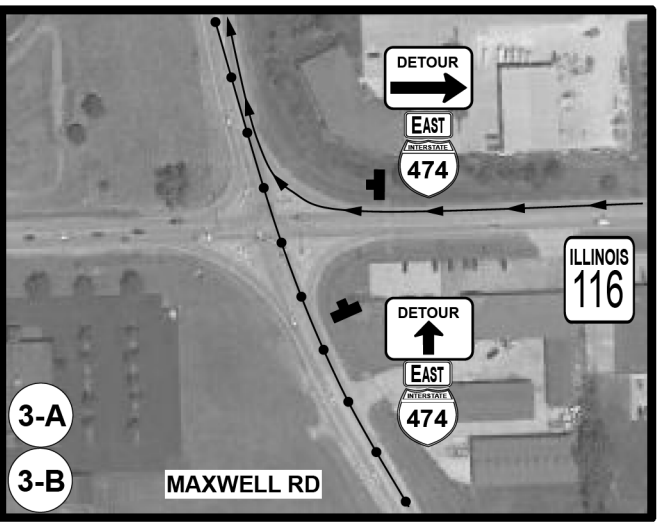
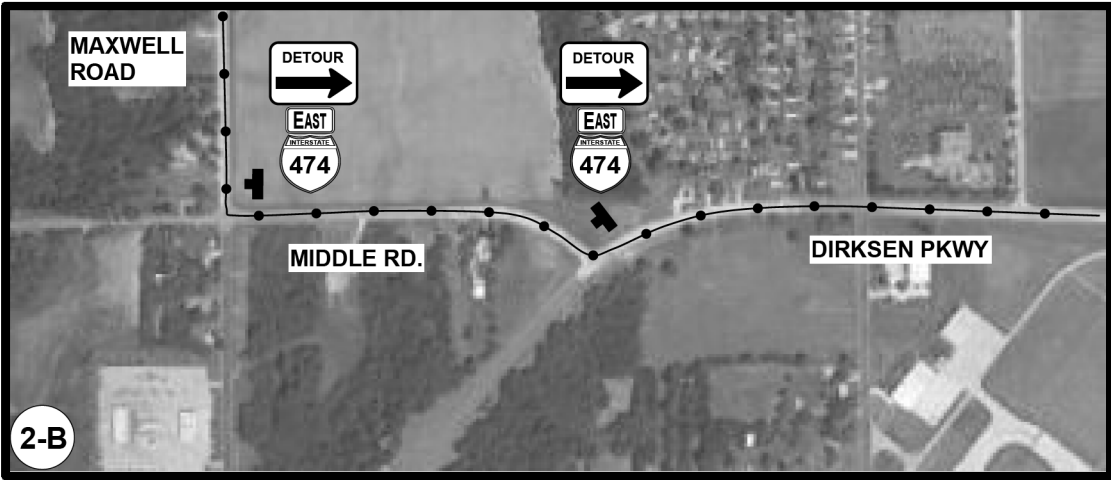
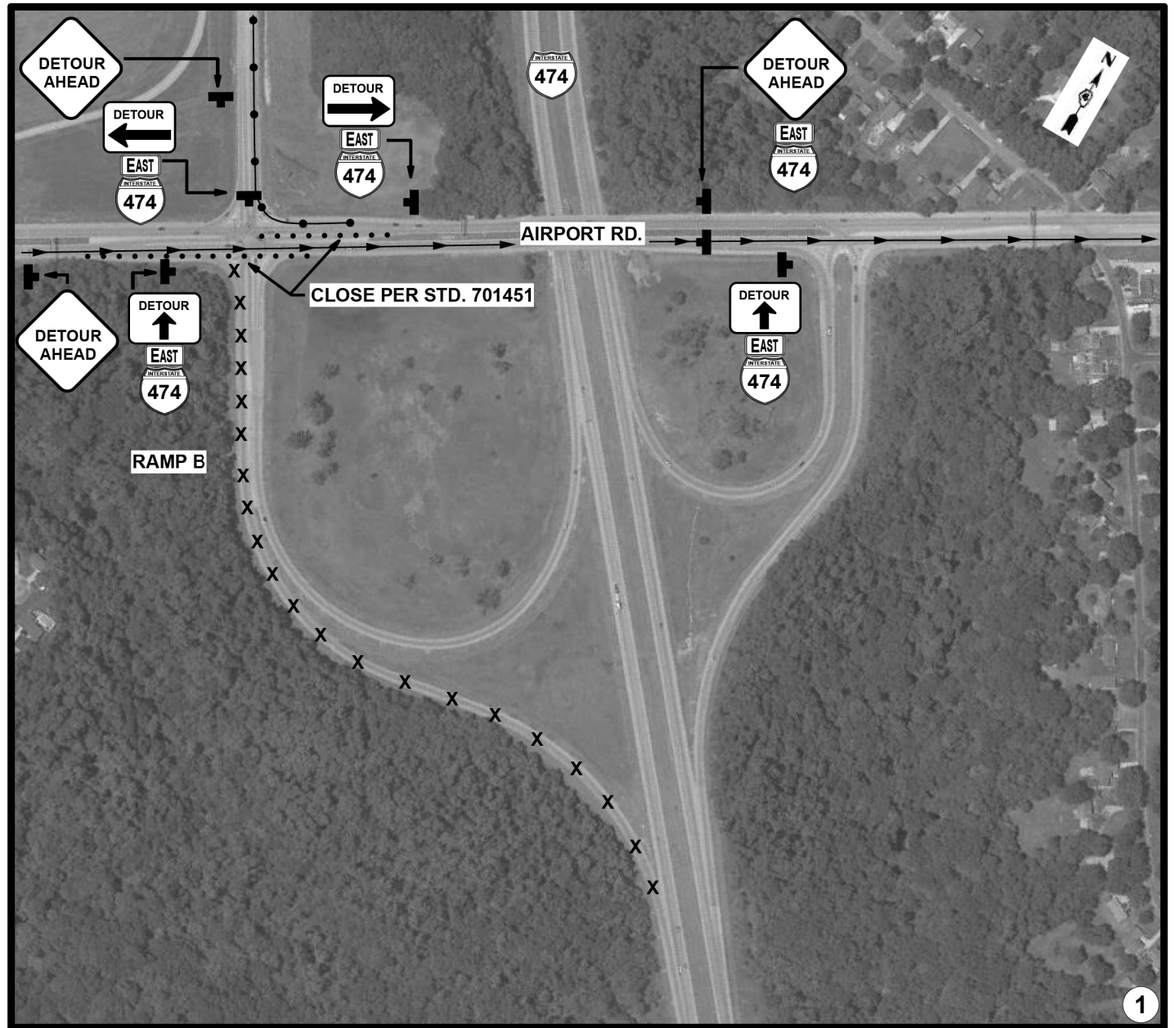
**STATE OF ILLINOIS
DEPARTMENT OF TRANSPORTATION**

RAMP CLOSURE DETOUR

SCALE: SHEET OF SHEETS STA. TO STA.

F.A.J. RTE.	SECTION	COUNTY	TOTAL SHEETS	SHEET NO.
474	(72-3,4)PP,RS-2	PEORIA	16	7
CONTRACT NO. 68E88				
ILLINOIS FED. AID PROJECT				

AIRPORT RD.-RAMP B CLOSURE/DETOUR



MODEL: Default
 FILE: \\nas01c.psu.edu\pub\baronm.d\at\illinois.gov\PIV\DOT\Documents\DOT_Offices\District_4\Projects\ID4_68E88\CADD\B\CADD\Drawings\ID4xxxx-CADD.dgn

USER NAME = greendm	DESIGNED -	REVISED -
	DRAWN -	REVISED -
PLOT SCALE = 100,0000' / in.	CHECKED -	REVISED -
PLOT DATE = 2/6/2020	DATE -	REVISED -

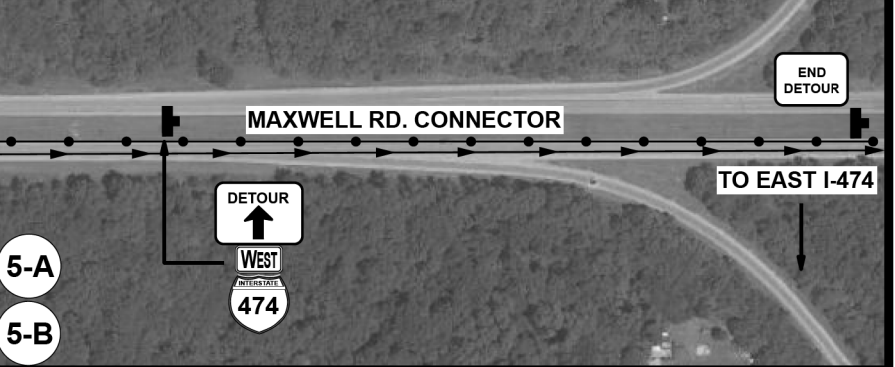
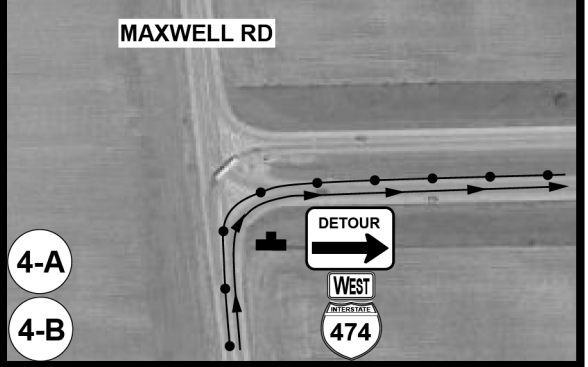
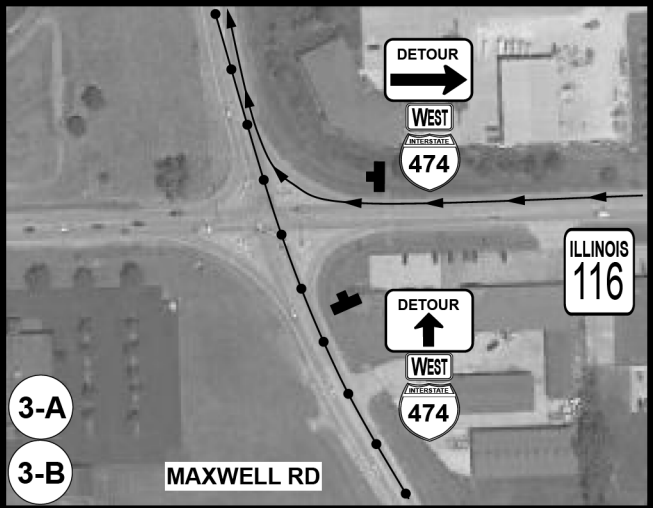
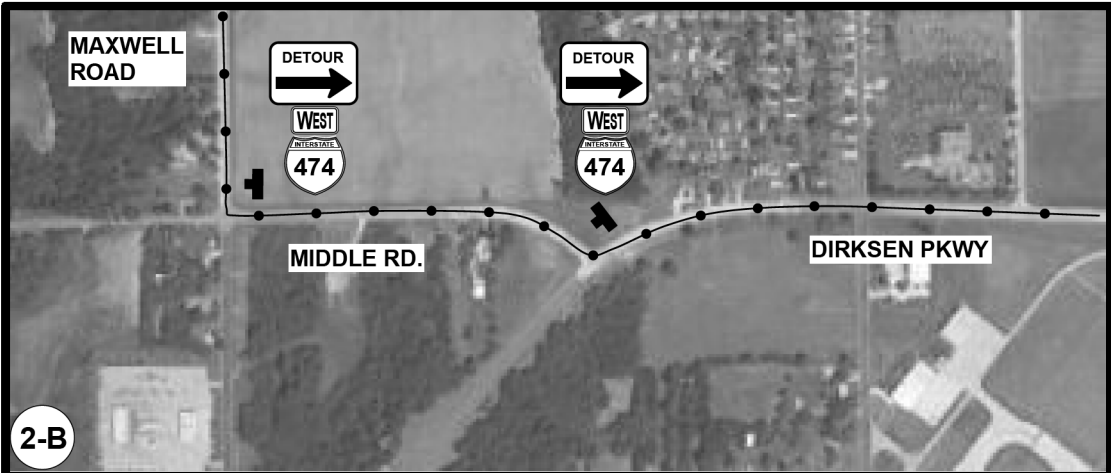
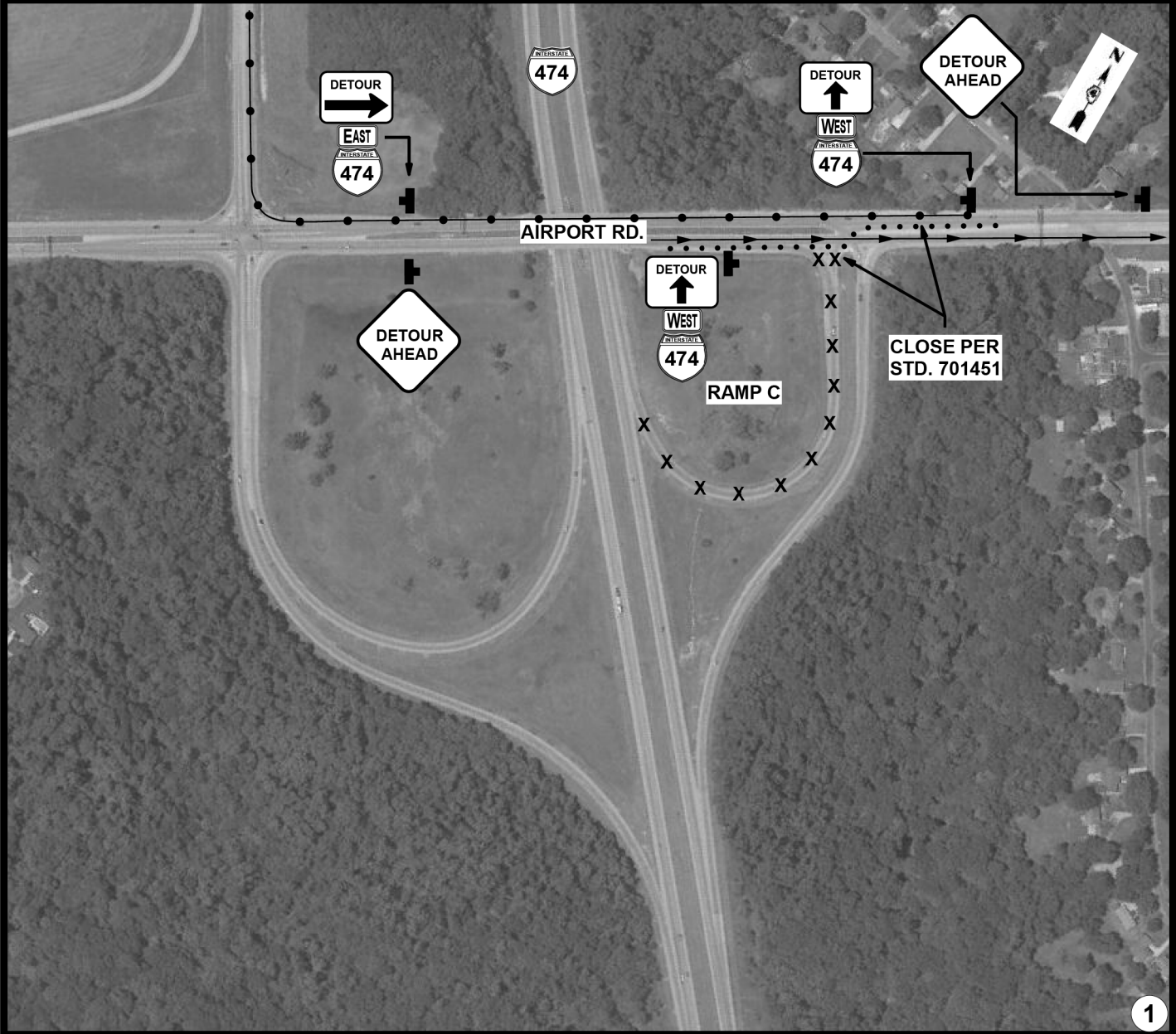
STATE OF ILLINOIS
DEPARTMENT OF TRANSPORTATION

RAMP CLOSURE DETOUR

SCALE: SHEET OF SHEETS STA. TO STA.

F.A.J. RTE.	SECTION	COUNTY	TOTAL SHEETS	SHEET NO.
474	(72-3,4)PP,RS-2	PEORIA	16	8
CONTRACT NO. 68E88				
ILLINOIS FED. AID PROJECT				

AIRPORT RD.-RAMP C CLOSURE/DETOUR



MODEL: Default
 FILE: \\nas01c.pva.hq.panorama.dia.illinois.gov\PI\DOT\Documents\DOT_Offices\District_4\Projects\ID4_68E88\CADD\A\CAD\Drawings\ID4xxxx-CADD.dwg

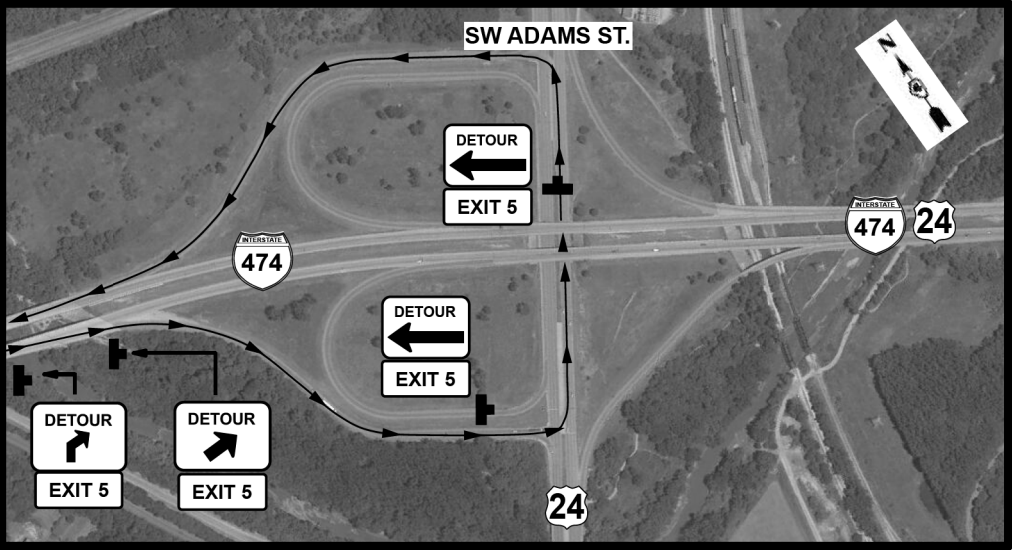
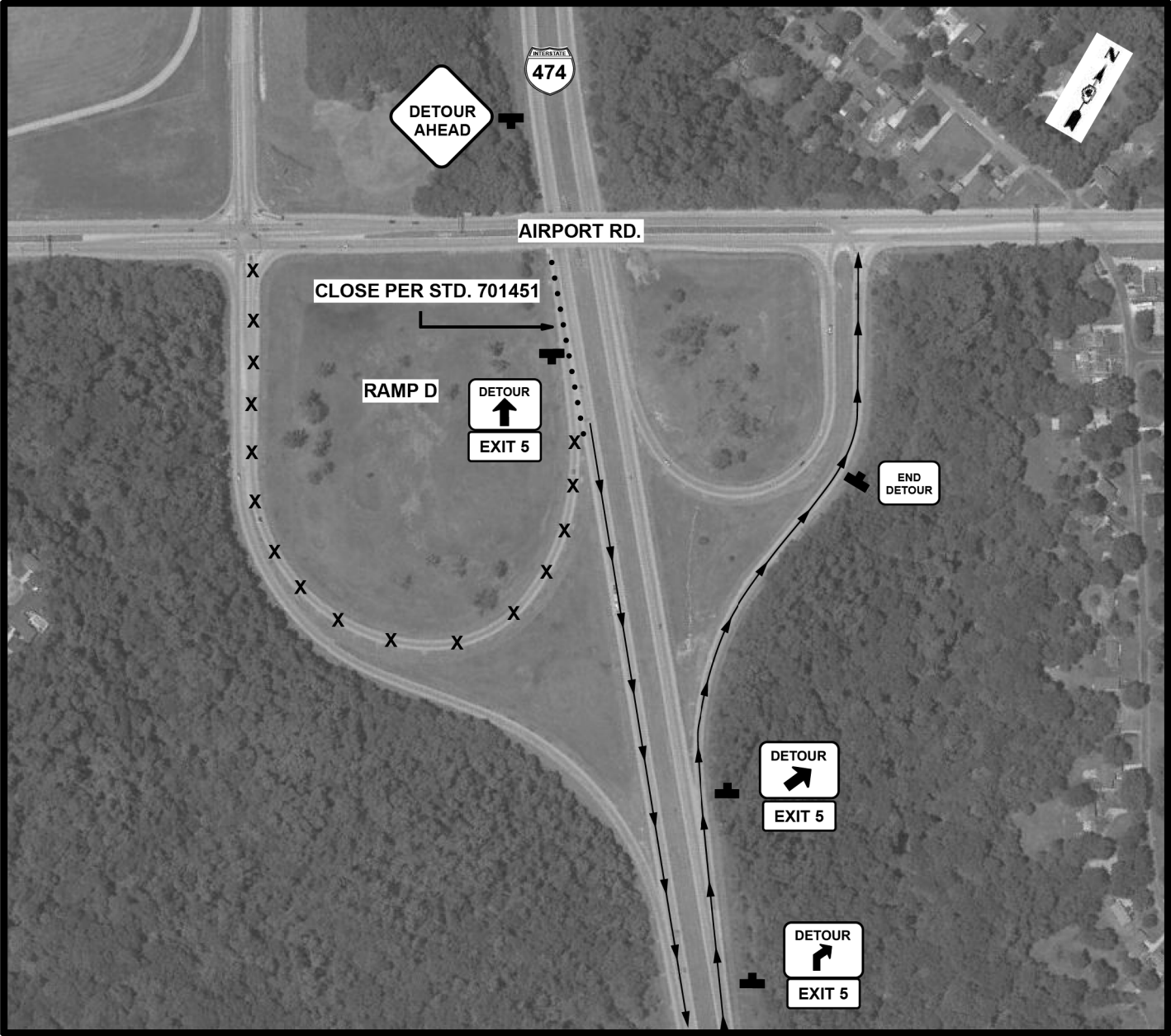
USER NAME = greendm	DESIGNED -	REVISED -
DRAWN -	REVISED -	
PLOT SCALE = 100,0000' / in.	CHECKED -	REVISED -
PLOT DATE = 2/6/2020	DATE -	REVISED -

**STATE OF ILLINOIS
DEPARTMENT OF TRANSPORTATION**

RAMP CLOSURE DETOUR	
SCALE:	SHEET OF SHEETS STA. TO STA.

F.A.J. RTE.	SECTION	COUNTY	TOTAL SHEETS	SHEET NO.
474	(72-3.4)PP,RS-2	PEORIA	16	9
CONTRACT NO. 68E88				
ILLINOIS FED. AID PROJECT				

AIRPORT RD.-RAMP D CLOSURE/DETOUR



MODEL: Default
 FILE: \\nas01c.pva.pulbar.com\data\illinois.gov\PIV\DOT\Documents\DOT_Offices\District_4\Projects\ID4_68E88\CADD\03\CAD\Drawings\ID4xxxx-CADD.dgn

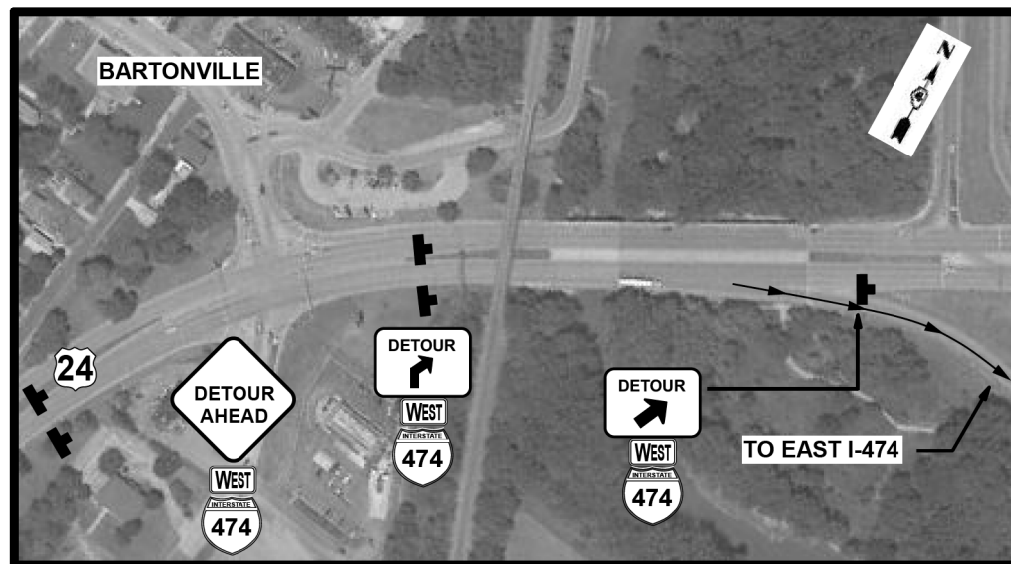
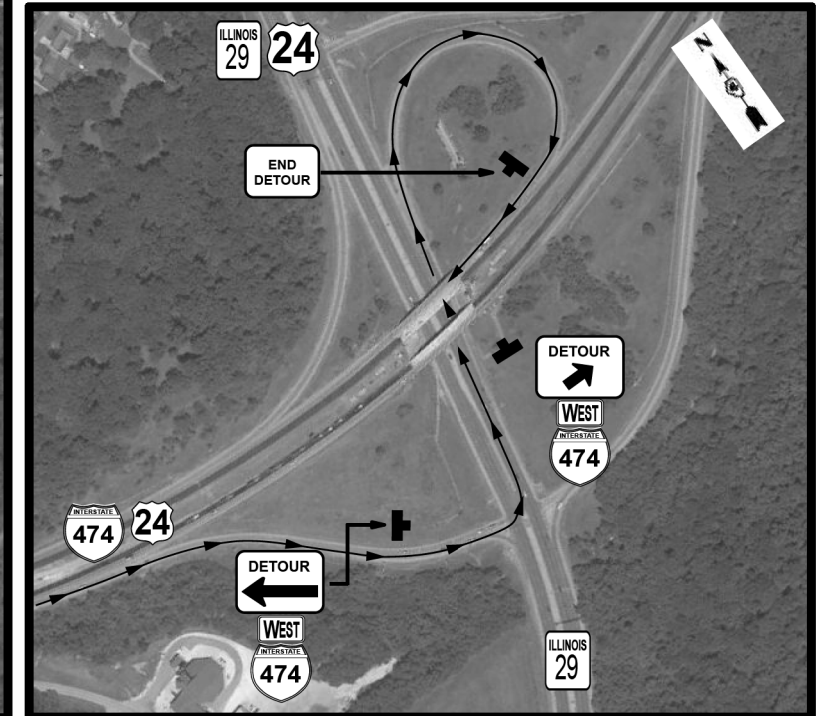
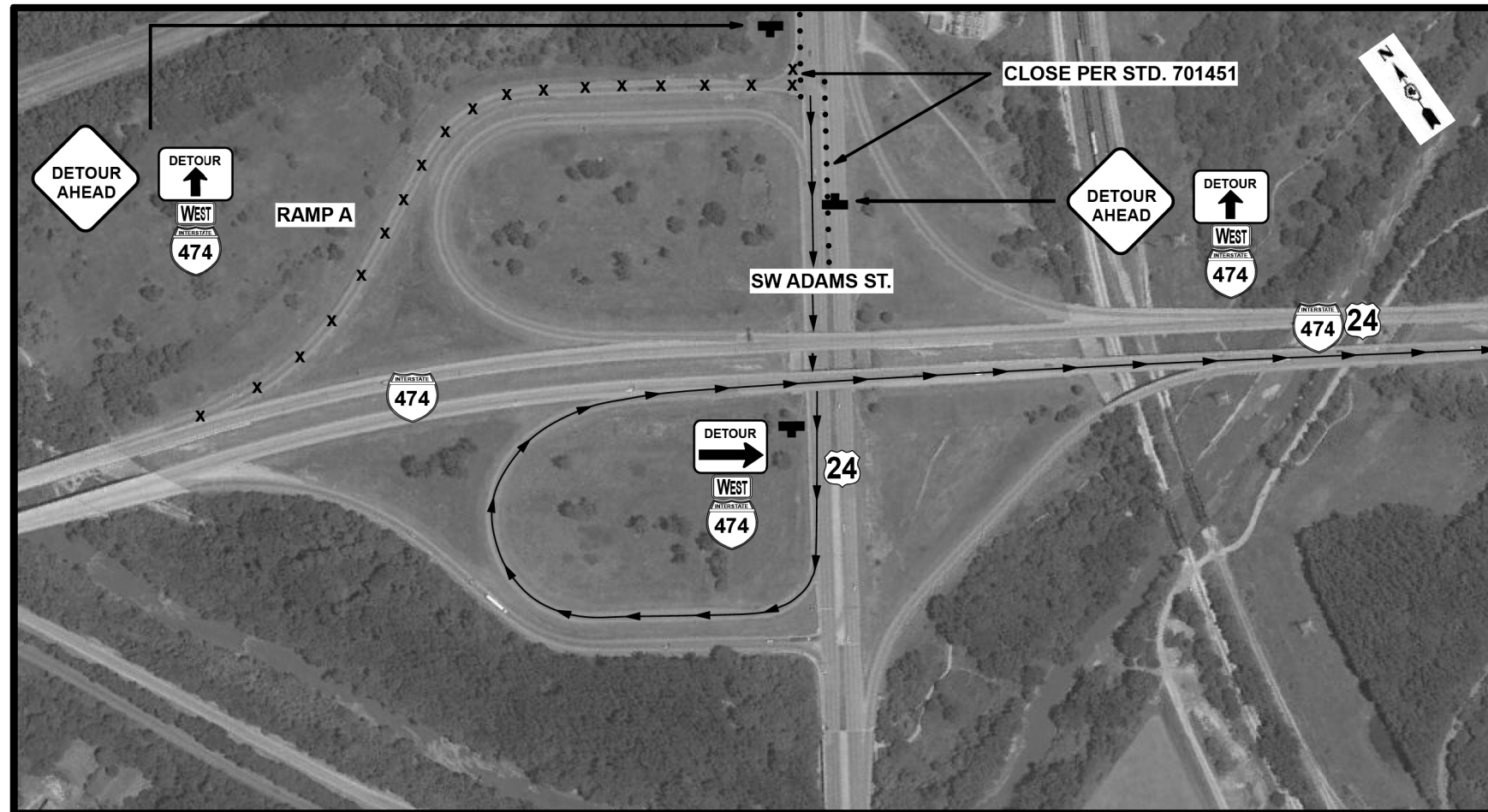
USER NAME = greendm	DESIGNED -	REVISED -
	DRAWN -	REVISED -
PLOT SCALE = 100,0000' / in.	CHECKED -	REVISED -
PLOT DATE = 2/6/2020	DATE -	REVISED -

STATE OF ILLINOIS
DEPARTMENT OF TRANSPORTATION

SCALE:		SHEET OF SHEETS		STA.	TO STA.
		RAMP CLOSURE DETOUR			

F.A.J. RTE.	SECTION	COUNTY	TOTAL SHEETS	SHEET NO.
474	(72-3,4)PP,RS-2	PEORIA	16	10
CONTRACT NO. 68E88				
ILLINOIS FED. AID PROJECT				

US 24-RAMP A CLOSURE/DETOUR



MODEL: Default
 FILE: \\baronm.dia.illinois.gov\PI\DOT\Documents\DOT_Offices\District_4\Projects\ID4_68E88\CADD\Bart\CADDrawings\ID4xxxx-CADD.dwg

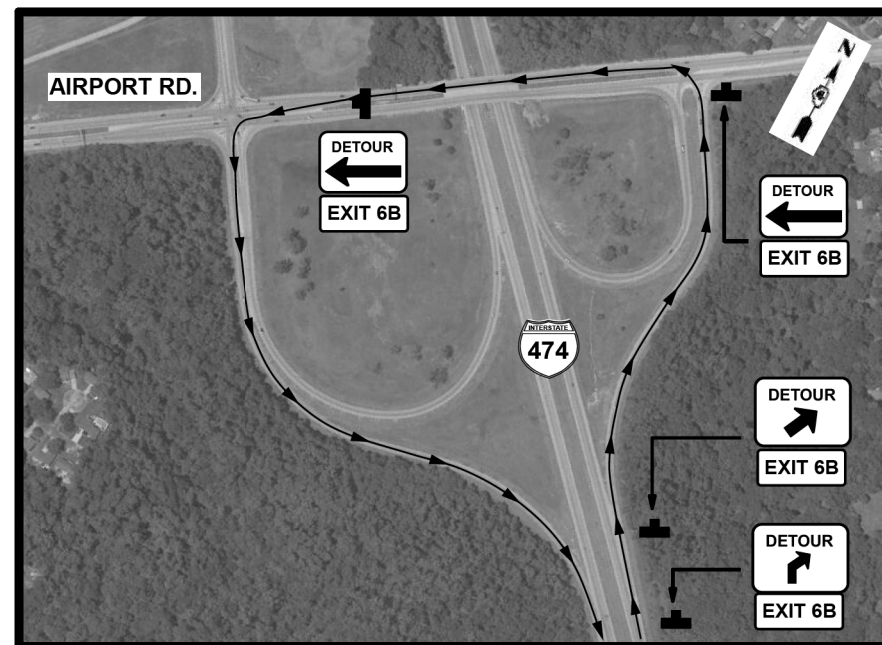
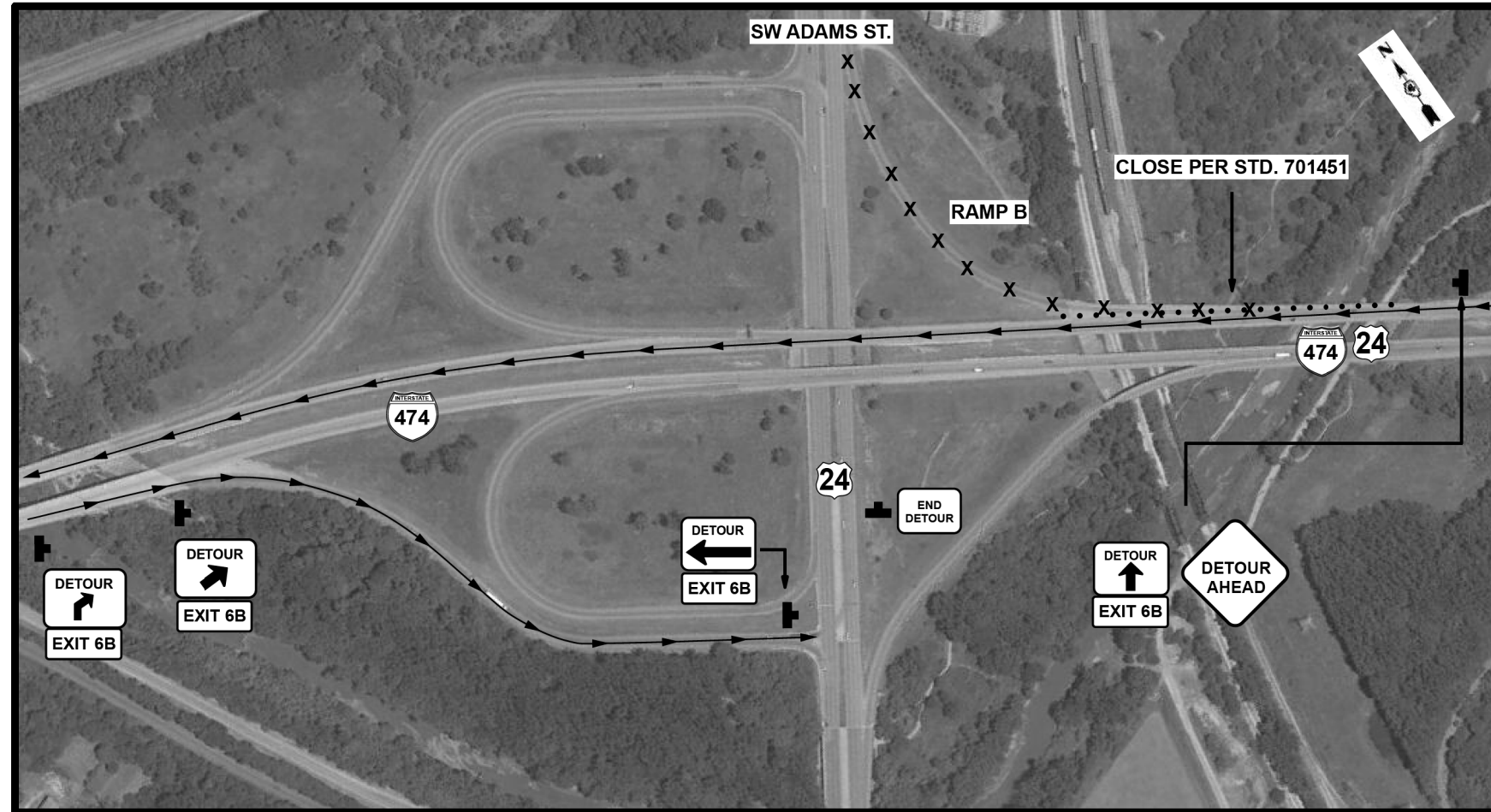
USER NAME = greendm	DESIGNED -	REVISED -
	DRAWN -	REVISED -
PLOT SCALE = 100,0000' / in.	CHECKED -	REVISED -
PLOT DATE = 2/6/2020	DATE -	REVISED -

STATE OF ILLINOIS
DEPARTMENT OF TRANSPORTATION

RAMP CLOSURE DETOUR				
SCALE:	SHEET	OF	SHEETS	STA. TO STA.

F.A.J. RTE.	SECTION	COUNTY	TOTAL SHEETS	SHEET NO.
474	(72-3,4)PP,RS-2	PEORIA	16	11
CONTRACT NO. 68E88				
ILLINOIS FED. AID PROJECT				

US 24-RAMP B CLOSURE/DETOUR



MODEL: Default
 FILE: \\nas01c.psu.edu\pub\baronm.d\at\illinois.gov\PIU\DOT\Documents\DOT_Offices\District_4\Projects\ID4_68E88\CADD\B\CADD\Drawings\ID4xxxx-CADD.dwg

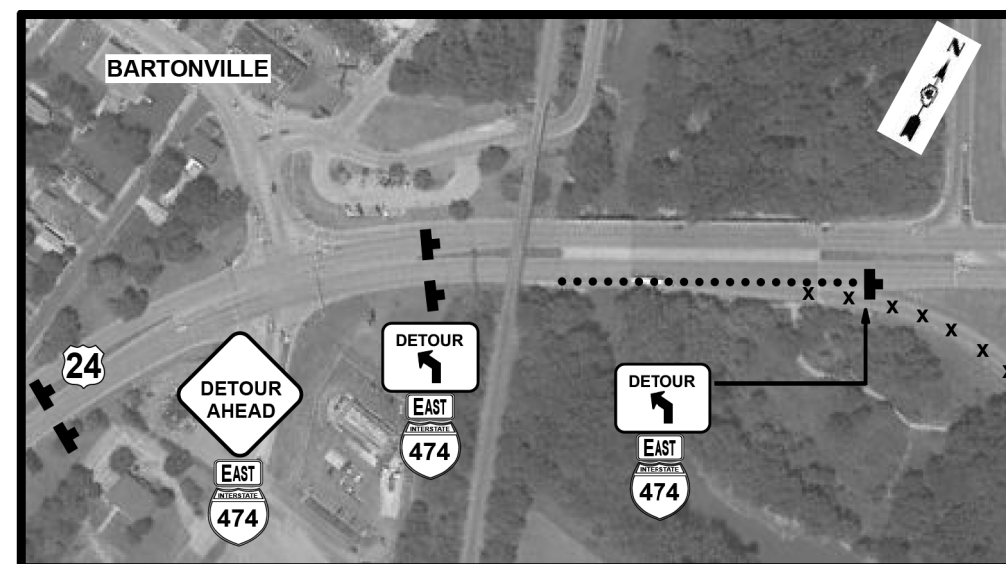
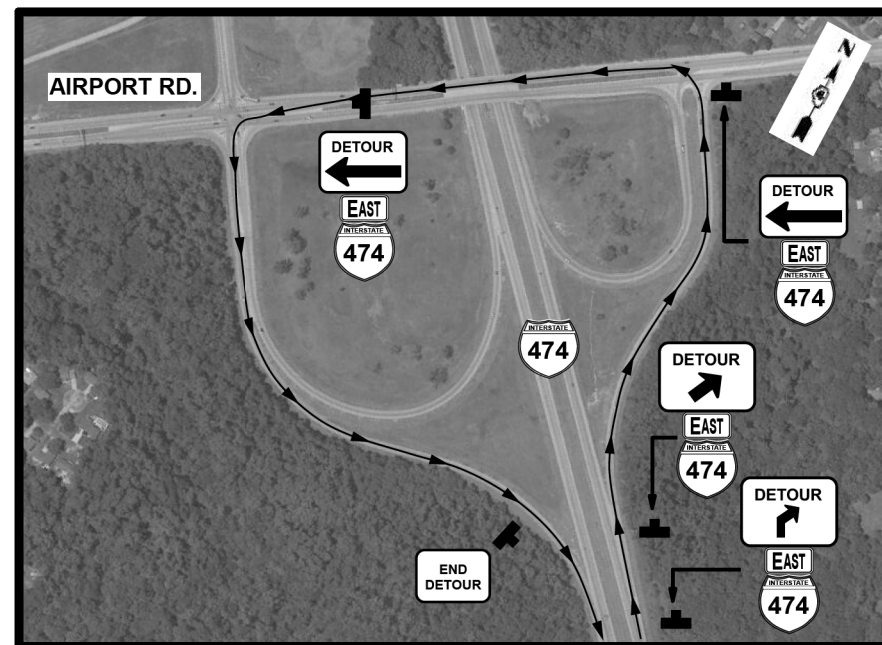
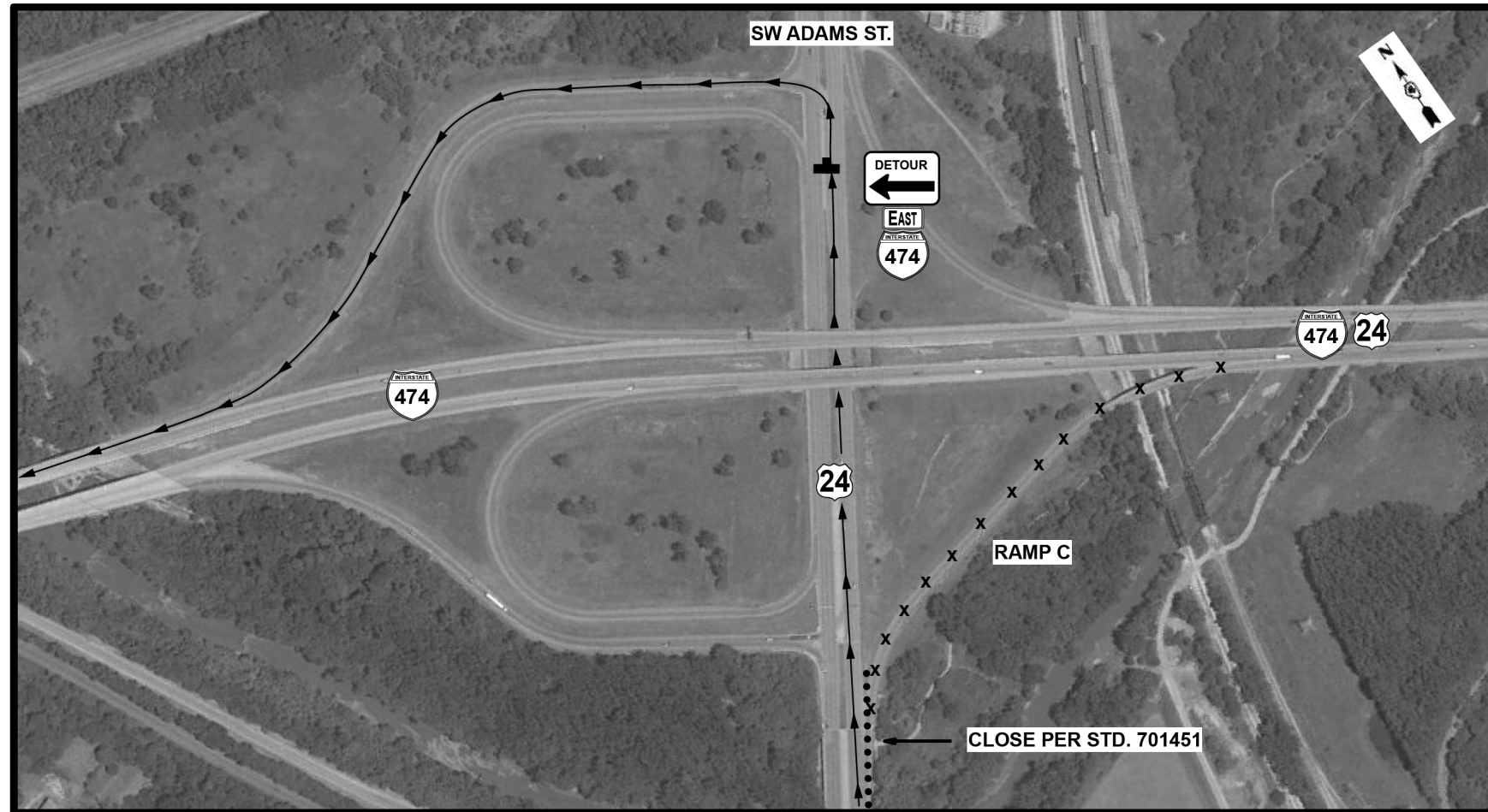
USER NAME = greendm	DESIGNED -	REVISED -
	DRAWN -	REVISED -
PLOT SCALE = 100,0000' / in.	CHECKED -	REVISED -
PLOT DATE = 2/6/2020	DATE -	REVISED -

STATE OF ILLINOIS
DEPARTMENT OF TRANSPORTATION

RAMP CLOSURE DETOUR				
SCALE:	SHEET	OF	SHEETS	STA. TO STA.

F.A.J. RTE.	SECTION	COUNTY	TOTAL SHEETS	SHEET NO.
474	(72-3,4)PP,RS-2	PEORIA	16	12
ILLINOIS			FED. AID PROJECT	
CONTRACT NO. 68E88				

US 24-RAMP C CLOSURE/DETOUR



MODEL: Default
 FILE: \\nas01c.psu.edu\baronm.dar\Illinois.gov\PIU\DOT\Documents\DOT_Offices\District_4\Projects\ID4_68E88\CADD\A\CAD\Drawings\ID4xxxx-CADD.dwg

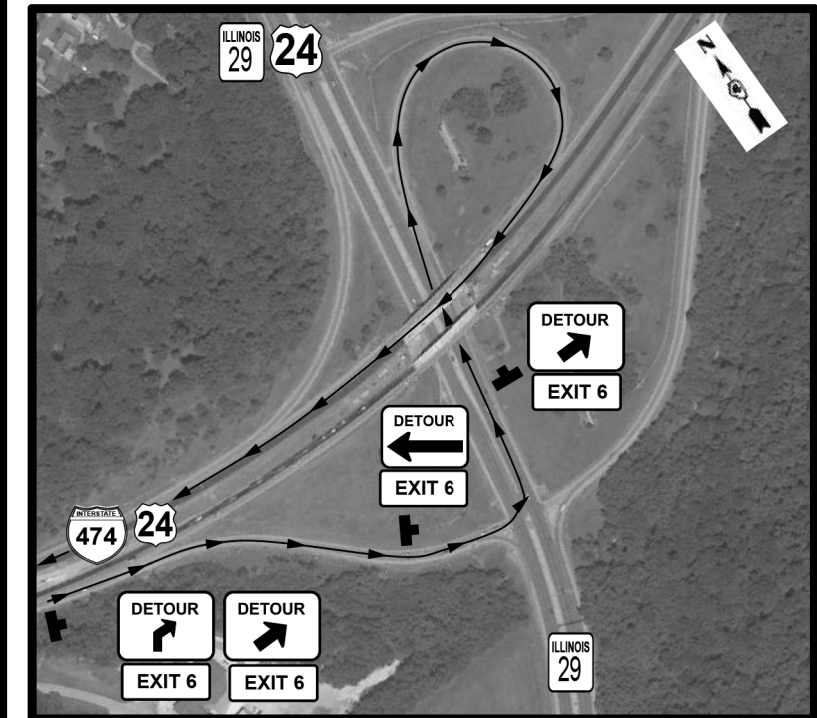
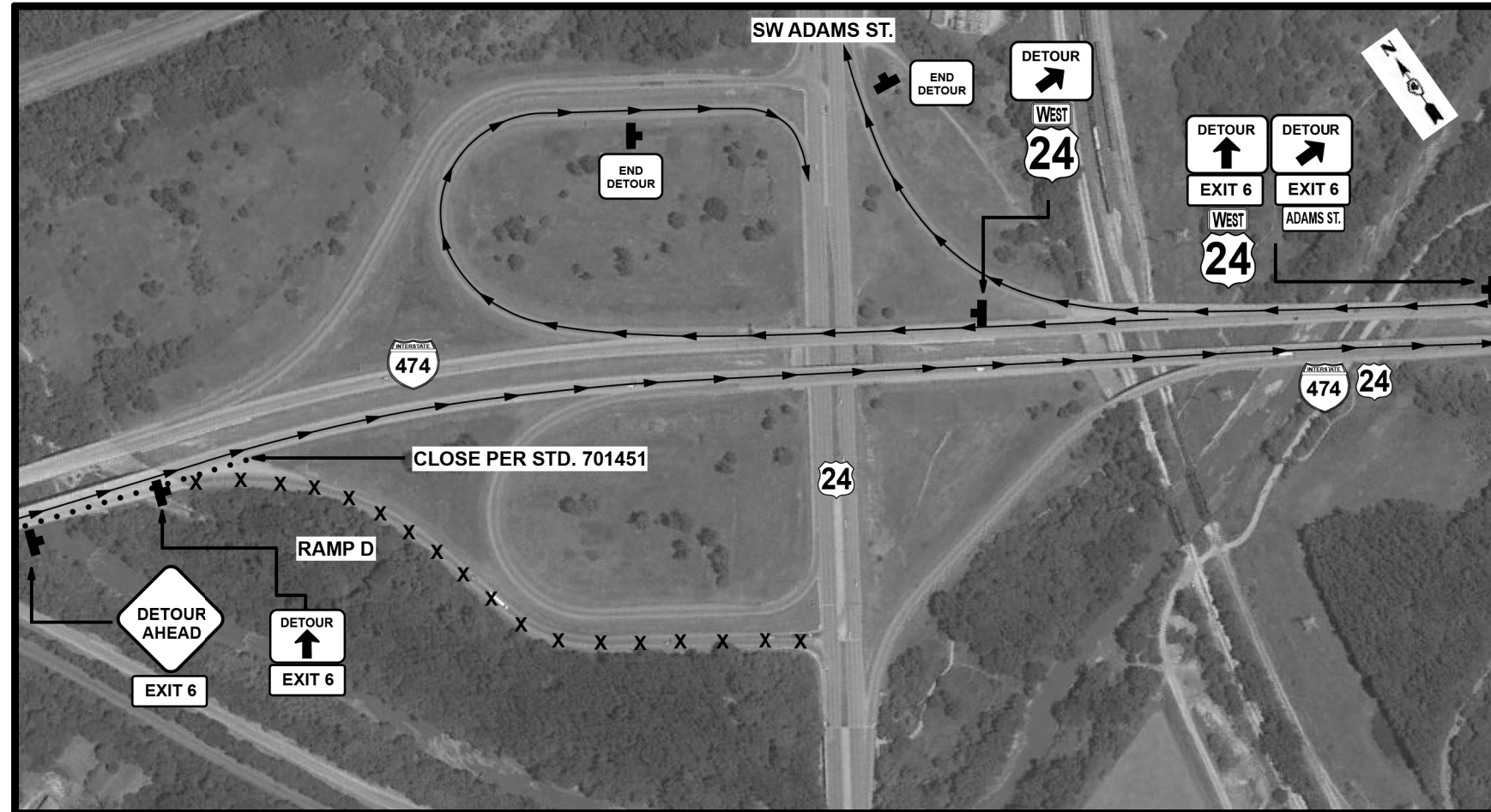
USER NAME = greendm	DESIGNED -	REVISED -
	DRAWN -	REVISED -
PLOT SCALE = 100,0000' / in.	CHECKED -	REVISED -
PLOT DATE = 2/6/2020	DATE -	REVISED -

STATE OF ILLINOIS
DEPARTMENT OF TRANSPORTATION

RAMP CLOSURE DETOUR				
SCALE:	SHEET	OF	SHEETS	STA. TO STA.

F.A.J. RTE.	SECTION	COUNTY	TOTAL SHEETS	SHEET NO.
474	(72-3.4)PP,RS-2	PEORIA	16	13
CONTRACT NO. 68E88				
ILLINOIS FED. AID PROJECT				

US 24-RAMP D CLOSURE/DETOUR



MODEL: Default
 FILE: \\nas01c.psu.edu\baronm\data\illinois.gov\PI\DOT\Documents\DOT_Offices\Director_4\Projects\ID4_68E88\CADD\Drawings\ID4xxxx-CADD.dgn

USER NAME = greendm	DESIGNED -	REVISED -
	DRAWN -	REVISED -
PLOT SCALE = 100,0000' / in.	CHECKED -	REVISED -
PLOT DATE = 2/6/2020	DATE -	REVISED -

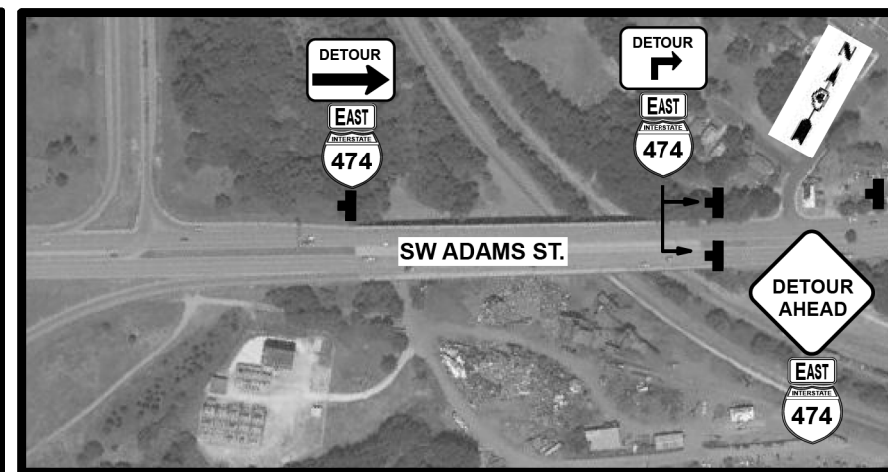
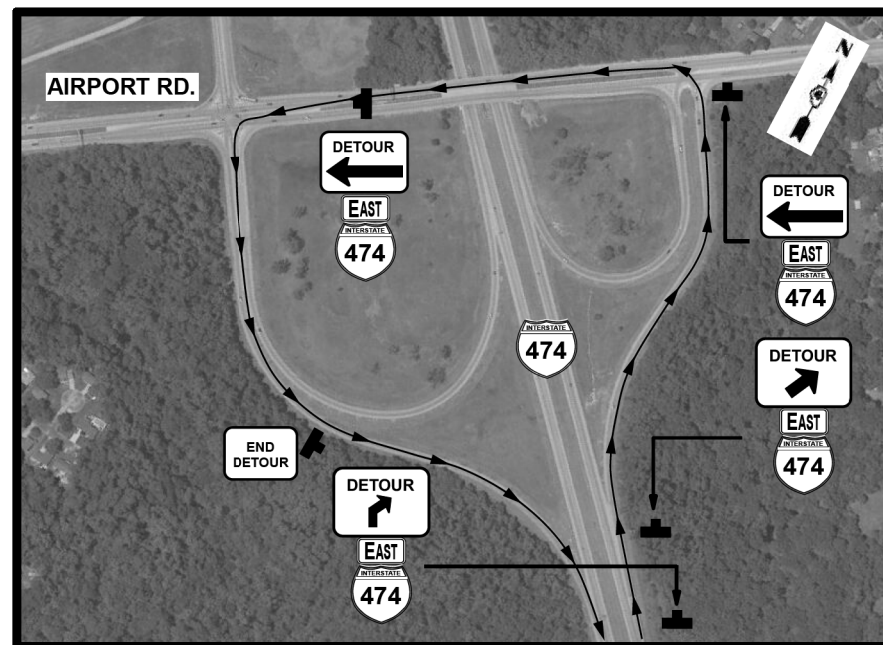
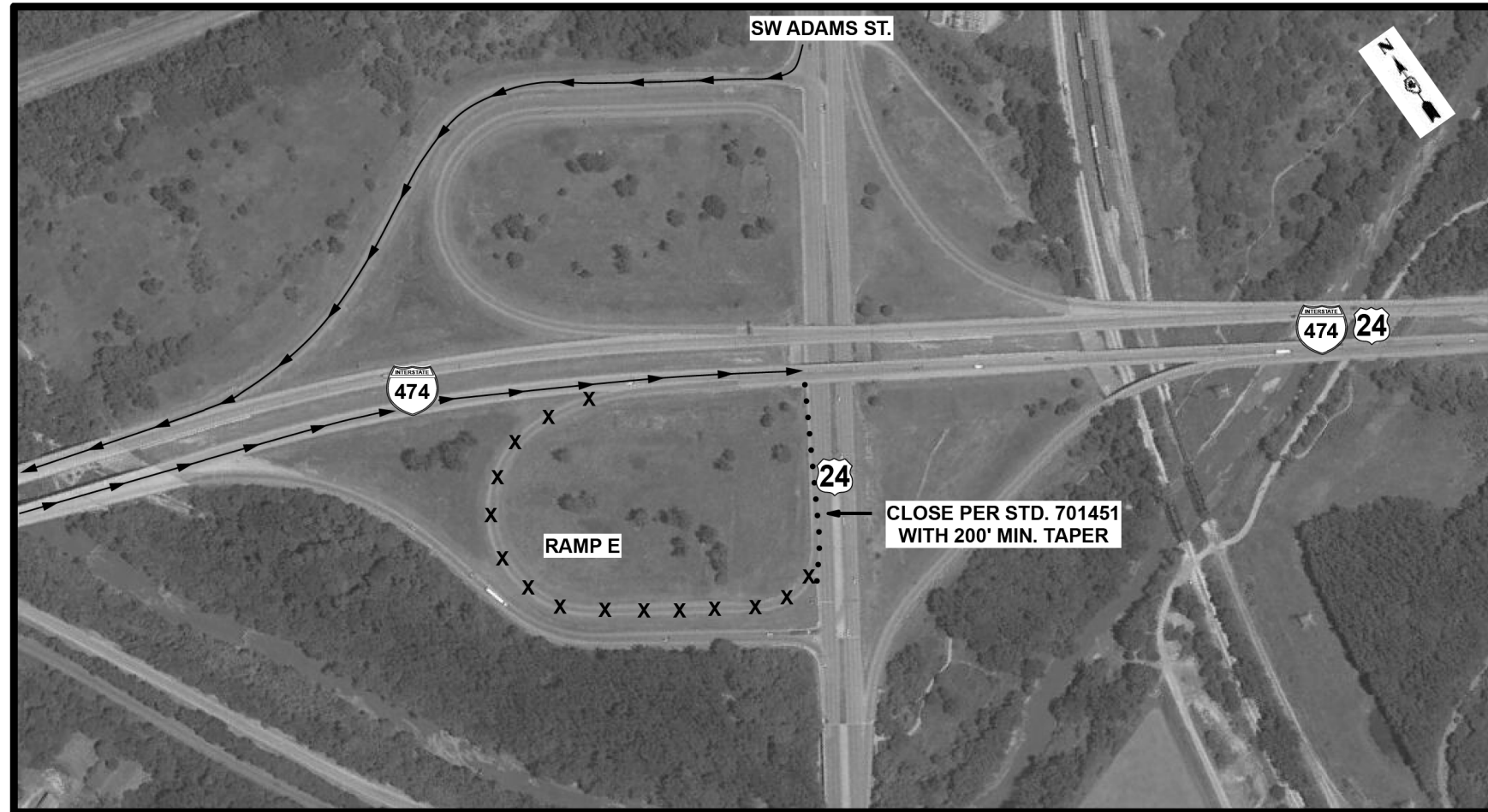
STATE OF ILLINOIS
DEPARTMENT OF TRANSPORTATION

SCALE:		SHEET		OF SHEETS		STA.	TO STA.

RAMP CLOSURE DETOUR

F.A.J. RTE.	SECTION	COUNTY	TOTAL SHEETS	SHEET NO.
474	(72-3,4)PP,RS-2	PEORIA	16	14
ILLINOIS FED. AID PROJECT			CONTRACT NO. 68E88	

US 24-RAMP E CLOSURE/DETOUR



MODEL: Default
 FILE: \\nas01c.psu.edu\pub\baronm.d\at\illinois.gov\PIU\DOT\Documents\DOT_Offices\District_4\Projects\ID4_68E88\CADD\RA\CAD\Drawings\ID4xxxx-CADD.dwg

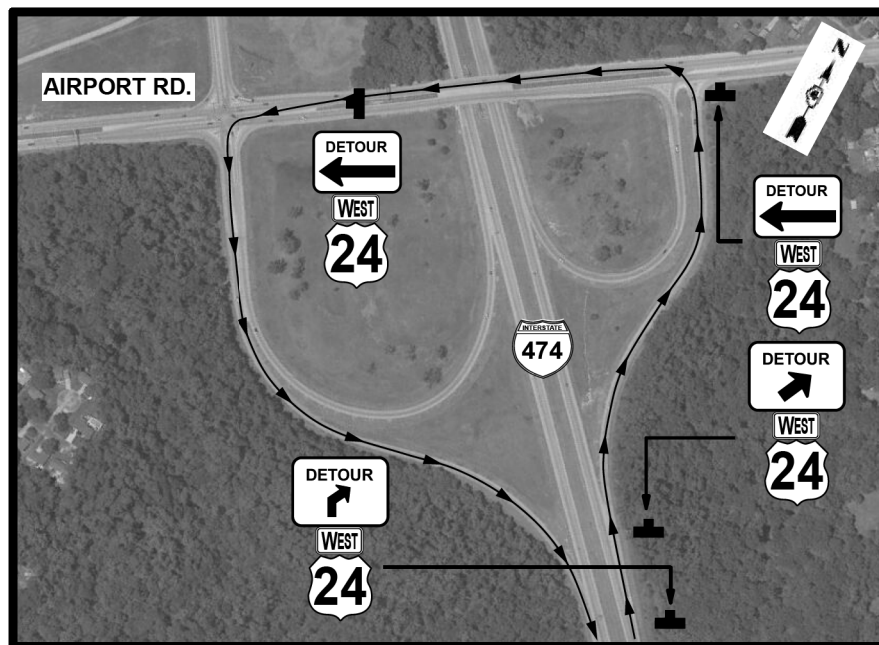
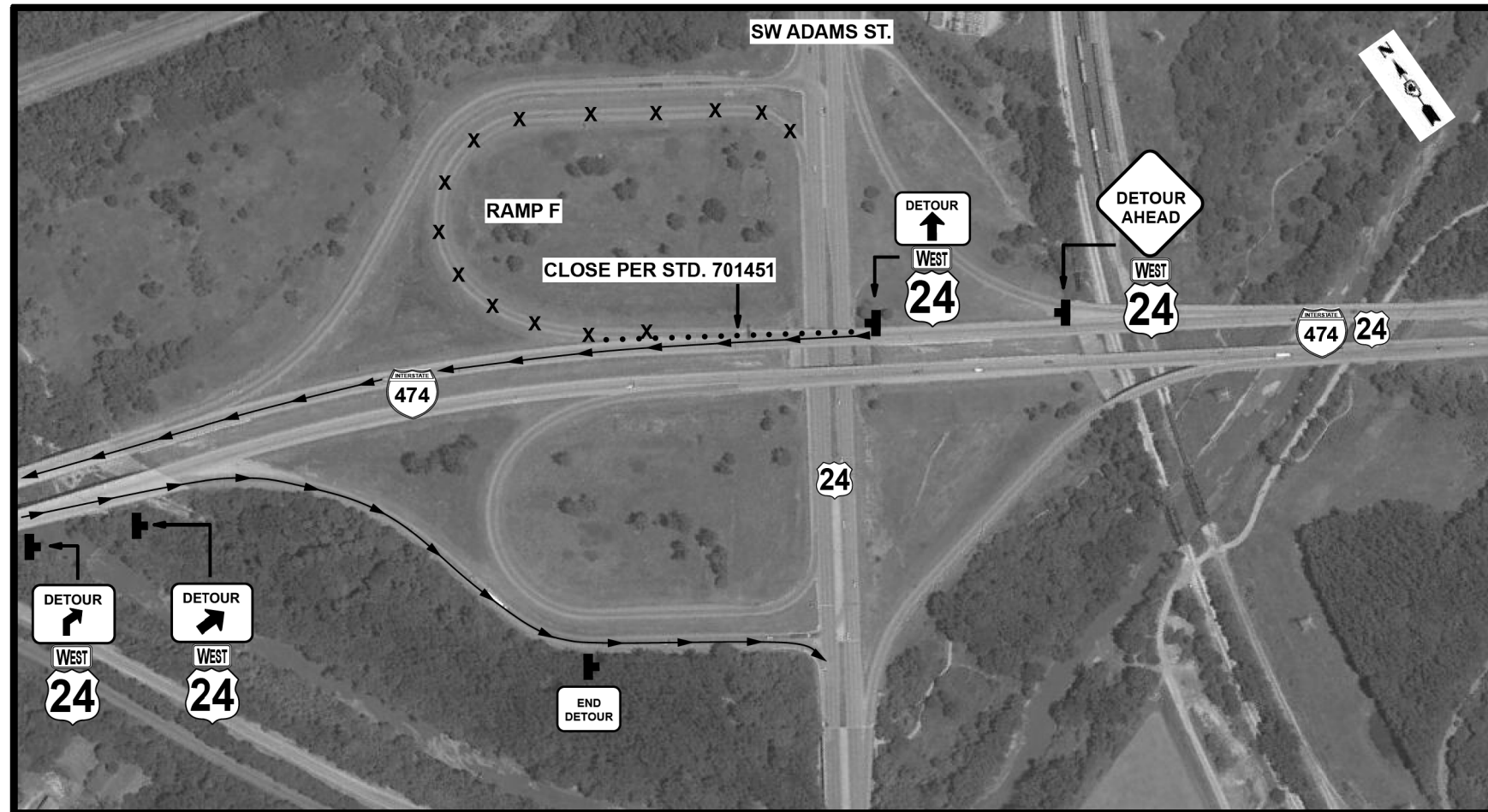
USER NAME = greendm	DESIGNED -	REVISED -
PLOT SCALE = 100,000' / in.	DRAWN -	REVISED -
PLOT DATE = 2/6/2020	CHECKED -	REVISED -
	DATE -	REVISED -

STATE OF ILLINOIS
DEPARTMENT OF TRANSPORTATION

RAMP CLOSURE DETOUR			
SCALE:	SHEET	OF	SHEETS
	STA.	TO	STA.

F.A.J. RTE.	SECTION	COUNTY	TOTAL SHEETS	SHEET NO.
474	(72-3,4)PP,RS-2	PEORIA	16	15
CONTRACT NO. 68E88			ILLINOIS FED. AID PROJECT	

US 24-RAMP F CLOSURE/DETOUR



MODEL: Default
 FILE: \\nas101.pva.pulbar.com\data\illinois.gov\PIV\DOT\Documents\DOT_Offices\District 4\Projects\ID4_68E88\CADD\01\CADD\Drawings\ID4xxxx-CADD.dwg

USER NAME = greendm	DESIGNED -	REVISED -
	DRAWN -	REVISED -
PLOT SCALE = 100,0000' / in.	CHECKED -	REVISED -
PLOT DATE = 2/6/2020	DATE -	REVISED -

STATE OF ILLINOIS
DEPARTMENT OF TRANSPORTATION

RAMP CLOSURE DETOUR				
SCALE:	SHEET	OF	SHEETS	STA. TO STA.

F.A.J. RTE.	SECTION	COUNTY	TOTAL SHEETS	SHEET NO.
474	(72-3,4)PP,RS-2	PEORIA	16	16
CONTRACT NO. 68E88			ILLINOIS FED. AID PROJECT	