

old

04-24-2020 LETTING ITEM 014

STATE OF ILLINOIS  
DEPARTMENT OF TRANSPORTATION

P.A. SHEET NO.	SECTION	COUNTY	TOTAL SHEETS	SHEET NO.
VAR	2019 110 LS	VARIOUS	13	1

D 91 279-20

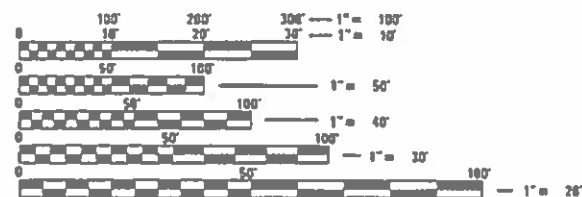
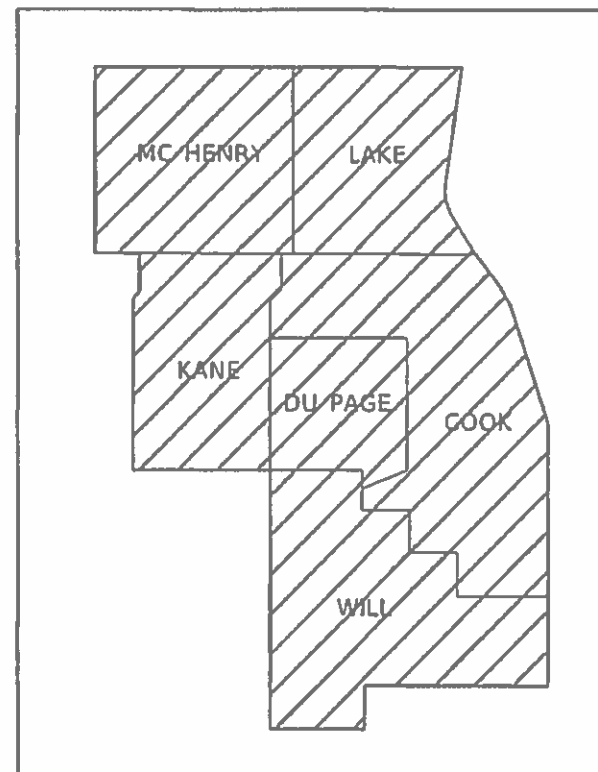
FOR INDEX OF SHEETS, SEE SHEET NO.

# PROPOSED HIGHWAY PLANS

ROUTE VARIOUS  
SECTION 2019-110-LS  
PROJECT NA  
LANDSCAPE REPAIR & RESTORATION  
VARIOUS COUNTY

C-91-062-20

IMPROVEMENTS ARE AT VARIOUS  
LOCATIONS WITHIN DISTRICT ONE



FULL SIZE PLANS HAVE BEEN PREPARED USING STANDARD ENGINEERING SCALES. REDUCED SIZED PLANS WILL NOT CONFORM TO STANDARD SCALES. IN MAKING MEASUREMENTS ON REDUCED PLANS, THE ABOVE SCALES MAY BE USED.

J.U.L.I.E.  
JOINT UTILITY LOCATION INFORMATION FOR EXCAVATORS  
1-800-892-0123  
OR 811

PROJECT ENGINEER JAMES STUMPNER  
PROJECT MANAGER GIOVANNA ZAFFINA (847) 705-4171

CONTRACT NO. 62K06

GROSS LENGTH = x.xx FT. = x.xxx MILE  
NET LENGTH = x.xx FT. = x.xxx MILE

STATE OF ILLINOIS  
DEPARTMENT OF TRANSPORTATION

SUBMITTED FEBRUARY 5 20 20  
*Anthony J. Stumpner*  
REGIONAL ENGINEER

MARCH 20 20 20  
*EA ETK*  
ENGINEER OF DESIGN AND ENVIRONMENT

MARCH 20 20 20  
*James Stumpner*  
DIRECTOR OF HIGHWAYS PROJECT IMPLEMENTATION

PRINTED BY THE AUTHORITY  
OF THE STATE OF ILLINOIS

# INDEX OF SHEETS

## SHEET NO. DESCRIPTION

1	COVER SHEET
2	INDEX OF SHEETS, HIGHWAY STANDARDS, GENERAL NOTES
3-6	SUMMARY OF QUANTITIES
7-10	CALENDAR OF CONSTRUCTION & ESTABLISHMENT WORK
11	WORK ORDER
12	TRAFFIC CONTROL AND PROTECTION SIDE ROADS, INTERSECTIONS, AND DRIVEWAYS (TC-10)
13	TRAFFIC CONTROL DETAIL FOR FREEWAY SHOULDER CLOSURES AND PARTIAL RAMP CLOSURE (TC-17)

## HIGHWAY STANDARDS

### STANDARD NO. DESCRIPTION

701001-02	OFF-ROAD OPERATIONS, 2L, 2W, MORE THAN 15' AWAY
701006-05	OFF-ROAD OPERATIONS, 2L, 2W, 15' TO 24' FROM PAVEMENT
701106-02	OFF-ROAD OPERATIONS, MORE THAN 15' AWAY
701201-05	LANE CLOSURE, 2L, 2W, DAY ONLY, FOR SPEEDS $\geq$ 45 MPH
701301-04	LANE CLOSURE, 2L, 2W, SHORT TIME OPERATIONS
701311-03	LANE CLOSURE, 2L, 2W, MOVING OPERATIONS - DAY ONLY
701421-08	LANE CLOSURE, MULTILANE, DAY OPERATION ONLY, FOR SPEEDS $\geq$ 45 MPH TO 55 MPH
701422-10	LANE CLOSURE, MULTILANE, FOR SPEEDS $\geq$ 45 MPH TO 55 MPH
701427-05	LANE CLOSURE, MULTILANE, INTERMITTENT OR MOVING OPERATIONS, FOR SPEEDS $\leq$ 40 MPH
701501-06	URBAN LANE CLOSURE, 2L, 2W, UNDIVIDED
701502-09	URBAN LANE CLOSURE, 2L, 2W, BI-DIRECTIONAL LEFT TURN LANE
701601-09	URBAN LANE CLOSURE, MULTILANE, 1W OR 2W WITH NON-TRAVERSABLE MEDIA
701606-10	URBAN SINGLE LANE CLOSURE, MULTILANE, 2W WITH MOUNTABLE MEDIA
701611-01	URBAN HALF CLOSURE, MULTILANE, 2W WITH MOUNTABLE MEDIA
701701-10	URBAN LANE CLOSURE, MULTILANE INTERSECTION
701801-06	SIDEWALK, CORNER OR CROSSWALK CLOSURE
701901-08	TRAFFIC CONTROL DEVICES

# GENERAL NOTES

- BEFORE STARTING ANY EXCAVATION, THE CONTRACTOR SHALL CALL "JULIE" AT (800) 892-0123 OR 811 FOR FIELD LOCATIONS OF BURIED ELECTRIC, TELEPHONE AND GAS UTILITIES. (48 HOUR NOTIFICATION IS REQUIRED).
- THE CONTRACTOR WILL NOT BE ALLOWED TO SET UP A YARD OR FIELD OFFICE ON STATE PROPERTY WITHOUT WRITTEN PERMISSION FROM THE DEPARTMENT.
- IT SHALL BE THE CONTRACTOR'S RESPONSIBILITY TO VERIFY ALL CONDITIONS EXISTING IN THE FIELD PRIOR TO STARTING WORK ORDERS.
- THE CONTRACTOR SHALL CONTACT DISTRICT ONE TRAFFIC CONTROL SUPERVISOR AT (847) 705-4470 A MINIMUM OF 72 HOURS IN ADVANCE OF BEGINNING WORK.
- THE CONTRACTOR SHALL REQUEST AND GAIN APPROVAL FROM THE ILLINOIS DEPARTMENT OF TRANSPORTATION'S EXPRESSWAY TRAFFIC OPERATIONS ENGINEER AT WWW.IDOT.IL.GOV TWENTY-FOUR (24) HOURS IN ADVANCE OF DAILY LAKE, RAMP AND SHOULDER CLOSURES AND 7 DAYS IN ADVANCE OF ALL PERMANENT AND WEEKEND CLOSURES ON ALL FREEWAYS AND/OR EXPRESSWAYS IN DISTRICT ONE. THIS ADVANCE NOTIFICATION IS CALCULATED BASED ON WORKWEEK OF MONDAY THROUGH FRIDAY AND SHALL NOT INCLUDE WEEKENDS OR HOLIDAYS.
- THE CONTRACTOR SHALL BE REQUIRED TO PROVIDE ACCESS TO ADJUTING PROPERTY AT ALL TIMES DURING THE CONSTRUCTION OF THIS PROJECT.
- THE CONTRACTOR SHALL USE CARE IN CONSTRUCTION OPERATIONS NEAR ANY AND ALL EXISTING ITEMS THAT WILL NOT BE REMOVED. ANY DAMAGE DONE TO EXISTING ITEMS BY THE CONTRACTOR SHALL BE REPAIRED AT THE CONTRACTOR'S OWN EXPENSE TO THE SATISFACTION OF THE ENGINEER.
- THE CONTRACTOR SHALL MAINTAIN PEDESTRIAN ACCESS AT ALL TIMES DURING CONSTRUCTION.
- DURING CONSTRUCTION OPERATIONS, WHEN ANY LOOSE MATERIAL IS DEPOSITED IN THE FLOW LINE OF DITCHES, GUTTERS, OR DRAINAGE STRUCTURES SO THAT THE NATURAL FLOW OF WATER IS OBSTRUCTED, THE MATERIAL SHALL BE REMOVED AT THE CLOSE OF EACH WORKING DAY. THIS WORK IS CONSIDERED AS PART OF CLEAN-UP.
- THE CONTRACTOR SHALL ADHERE TO ARTICLE 107.23 OF THE CURRENT IDOT STANDARD SPECIFICATIONS BOOK.
- WHEN HERBICIDE WORK IS SPECIFIED AND AUTHORIZED, THE CONTRACTOR SHALL HAVE A LICENSED APPLICATOR ON THE WORK SITE TO PERFORM SAID WORK UNDER THE DIRECT SUPERVISION OF THE RESIDENT ENGINEER.

SUMMARY OF QUANTITIES				CONSTRUCTION TYPE CODE				
CODE NO	ITEM	UNIT	TOTAL QUANTITIES	0031				
B2013468	TREE, MALUS 'GOLDEN RAINDROPS' (GOLDEN RAINDROPS CRABAPPLE), 2" CALIPER, TREE FORM, BALLED AND BURLAPPED	EACH	10	10				
C2000633	SHRUB, ARONIA MELANOCARPA AUTUMN MAGIC (AUTUMN MAGIC BLACK CHOKEBERRY), CONTAINER GROWN, 5-GALLON	EACH	15	15				
A200720	TREE, QUERCUS ROBUR LONG (REGAL PRINCE OAK), 2" CALIPER, BALLED AND BURLAPPED	EACH	9	9				
A2003230	TREE, CRYA CORDIFORMIS (BITTERNUT HICKORY), CONTAINER GROWN, 15-GALLON	EACH	10	10				
A2006342	TREE, PRUNUS SEROTINA (BLACK CHERRY), CONTAINER GROWN, 15-GALLON	EACH	9	9				
B2013920	TREE, SASSAFRAS ALBIDUM (SASSAFRAS), CONTAINER GROWN, 15-GALLON	EACH	7	7				
C2000139	SHRUB, ASCULUS PARVIFLORA (BOTTLEBRUSH BUCKEYE), CONTAINER GROWN, 5-GALLON	EACH	30	30				
C2001162	SHRUB, CEPHALANTHUS OCCIDENTALIS (BUTTON BUSH), CONTAINER GROWN, 5-GALLON	EACH	10	10				
C2002437	SHRUB, DIERVILLA G2X88544 (KODIAK ORANGE BUSH HONEYSUCKLE), CONTAINER GROWN, 3-GALLON	EACH	10	10				

SUMMARY OF QUANTITIES				CONSTRUCTION TYPE CODE				
CODE NO	ITEM	UNIT	TOTAL QUANTITIES	0031				
C2003062	SHRUB, FORSYTHIA X NORTHERN GOLD (NORTHERN GOLD FORSYTHIA), CONTAINER GROWN, 5-GALLON	EACH	20	20				
C2003063	SHRUB, FOTHERGILLA GARDENII (DWARF FOTHERGILLA), CONTAINER GROWN, 3-GALLON	EACH	26	26				
C2003601	SHRUB, HYDRANGEA QUERCIFOLIA MUNCHKIN (MUNCHKIN OAKLEAF HYDRANGEA), CONTAINER GROWN, 3-GALLON	EACH	24	24				
C2005732	SHRUB, RHUS AROMATICA (FRAGRANT SUMAC), CONTAINER GROWN, 5-GALLON	EACH	27	27				
B2003867	TREE, MALUS IOENSIS (PRAIRIE CRABAPPLE), CONTAINER GROWN, 15-GALLON	EACH	6	6				
20101400	NITROGEN FERTILIZER NUTRIENT	POUND	120	120				
20101500	PHOSPHORUS FERTILIZER NUTRIENT	POUND	120	120				
20101600	POTASSIUM FERTILIZER NUTRIENT	POUND	120	120				
21101605	TOPSOIL FURNISH AND PLACE, 2"	50 YD	1850	1850				
21101615	TOPSOIL FURNISH AND PLACE, 4"	50 YD	1800	1800				
25000210	SEEDING, CLASS 2A	ACRE	1	1				
25000750	MOWING	ACRE	12	12				

REV-SEP

SUMMARY OF QUANTITIES				CONSTRUCTION TYPE CODE				SUMMARY OF QUANTITIES				CONSTRUCTION TYPE CODE				
CODE NO	ITEM	UNIT	TOTAL QUANTITIES	0031				CODE NO	ITEM	UNIT	TOTAL QUANTITIES	0031				
25100125	MULCH, METHOD 3	ACRE	14	14					HACKBERRY), 2" CALIPER, BALLED AND BURLAPPED							
25100630	EROSION CONTROL BLANKET	50 YD	19360	19360				A2004816	TREE, GLEDITSIA TRIACANTHOS INERMIS	EACH	9	9				
25200110	SODDING, SALT TOLERANT	50 YD	300	300					SKYLINE (SKYLINE THORNLESS COMMON HONEYLOCUST), 2" CALIPER, BALLED AND BURLAPPED							
25200200	SUPPLEMENTAL WATERING	UNIT	40	40				A2005020	TREE, GYMNOCLADUS DIOICUS (KENTUCKY COFFEETREE), 2-1/2" CALIPER, BALLED AND BURLAPPED	EACH	28	28				
A2001621	TREE, ACER SACCHARINUM BAILSTA (FALL FIESTA SUGAR MAPLE), 2" CALIPER, BALLED AND BURLAPPED	EACH	9	9				A2005116	TREE, JUGLANS NIGRA (BLACK WALNUT), 2" CALIPER, BALLED AND BURLAPPED	EACH	9	9				
A2002008	TREE, AESCULUS FLAVEA (YELLOW SWEET BUCKEYE), 2" CALIPER, BALLED AND BURLAPPED	EACH	9	9				A2005416	TREE, LIRIODENDRON TULIPIFERA (TULIP TREE), 2" CALIPER, BALLED AND BURLAPPED	EACH	12	12				
A2002016	TREE, AESCULUS GLABRA (OHIO BUCKEYE), 2" CALIPER, BALLED AND BURLAPPED	EACH	9	9				A2005516	TREE, NYSSA SYLVATICA (BLACK TUPELO), 2" CALIPER, BALLED AND BURLAPPED	EACH	15	15				
A2002516	TREE, CARPINUS CAROLINIANA (AMERICAN HORNBEAM), 2" CALIPER, BALLED AND BURLAPPED	EACH	9	9				A2005616	TREE, OSTRYA VIRGINIANA (AMERICAN HOPHORNBEAM), 2" CALIPER, BALLED AND BURLAPPED	EACH	12	12				
A2002714	TREE, CARYA OVATA (SHAGBARK HICKORY), 1-3/4" CALIPER, BALLED AND BURLAPPED	EACH	10	10				A2005814	TREE, PLATANUS OCCIDENTALIS (SYCAMORE), 1-3/4" CALIPER, BALLED AND BURLAPPED	EACH	11	11				
A2002816	TREE, CATALPA SPECIOSA (NORTHERN CATALPA), 2" CALIPER, BALLED AND BURLAPPED	EACH	15	15				A2006516	TREE, QUERCUS BICOLOR (SWAMP WHITE OAK), 2" CALIPER, BALLED AND BURLAPPED	EACH	26	26				
A2002916	TREE, CELTIS OCCIDENTALIS (COMMON	EACH	18	18												

SUMMARY OF QUANTITIES				CONSTRUCTION TYPE CODE				SUMMARY OF QUANTITIES				CONSTRUCTION TYPE CODE			
CODE NO	ITEM	UNIT	TOTAL QUANTITIES	0031				CODE NO	ITEM	UNIT	TOTAL QUANTITIES	0031			
A2006616	TREE, QUERCUS IMBRICARIA (SHINGLE OAK), 2" CALIPER, BALLED AND BURLAPPED	EACH	12	12				B2001462	TREE, CORNUS MAS (CORNELIAN CHERRY DOGWOOD), 4' HEIGHT, SHRUB FORM, BALLED AND BURLAPPED	EACH	10	10			
A2006716	TREE, QUERCUS MACROCARPA (BUR OAK), 2" CALIPER, BALLED AND BURLAPPED	EACH	22	22				B2001664	TREE, CRATAEGUS CRUSGALLI INERMIS (THORN LESS COCKSPUR HAWTHORN), 5' HEIGHT, SHRUB FORM, BALLED AND BURLAPPED	EACH	11	11			
A2006816	TREE, QUERCUS MUEHLEBERGII (CHINKAPIN OAK), 2" CALIPER, BALLED AND BURLAPPED	EACH	15	15				B2006316	TREE, SYRINGA RETICULATA IVORY SILK (IVORY SILK JAPANESE TREE LILAC), 2" CALIPER, TREE FORM, BALLED AND BURLAPPED	EACH	25	25			
A2007150	TREE, QUERCUS VELUTINA (BLACK OAK), 2" CALIPER, BALLED AND BURLAPPED	EACH	8	8				B2010070	TREE, CLADRASTIS KENTUCKEA (AMERICAN YELLOWWOOD), 2" CALIPER, BALLED AND BURLAPPED	EACH	9	9			
A2007616	TREE, TAXODIUM DISTICHUM (COMMON BALD CYPRESS), 2" CALIPER, BALLED AND BURLAPPED	EACH	14	14				C2001548	SHRUB, CORNUS RACEMOSA (GREY DOGWOOD), 4' HEIGHT, BALLED AND BURLAPPED	EACH	18	18			
A2008468	TREE, ULMUS AMERICANA PRINCETON (PRINCETON AMERICAN ELM), 2" CALIPER, BALLED AND BURLAPPED	EACH	14	14				C2002048	SHRUB, CORYLUS AMERICANA (AMERICAN FILBERT), 4' HEIGHT, BALLED AND BURLAPPED	EACH	20	20			
A2016616	TREE, QUERCUS ELLIPSOIDALIS (HILL'S OAK), 2" CALIPER, BALLED AND BURLAPPED	EACH	10	10				C2003360	SHRUB, HAMAMELIS VIRGINIANA (COMMON WITCHHAZEL), 5' HEIGHT, BALLED AND BURLAPPED	EACH	6	6			
B2000764	TREE, AMELANCHIER X GRANDIFLORA AUTUMN BRILLIANCE (AUTUMN BRILLIANCE SERVICE BERRY), 5' HEIGHT, SHRUB FORM, BALLED AND BURLAPPED	EACH	22	22				C2005965	SHRUB, RHUS GLABRA (SMOOTH SUMAC), 5-GALLON	EACH	28	28			
B2001164	TREE, CERCIS CANADENSIS (EASTERN REDBUD), 5' HEIGHT, CLUMP FORM, BALLED AND BURLAPPED	EACH	22	22											

SUMMARY OF QUANTITIES				CONSTRUCTION TYPE CODE				
CODE NO	ITEM	UNIT	TOTAL QUANTITIES	0031				
C2011036	SHRUB, SYRINGA PATULA MISS KIM (MISS KIM MANCHURIAN LILAC), 3' HEIGHT, BALLED AND BURLAPPED	EACH	28	28				
C2012748	SHRUB, VIBURNUM PRUNIFOLIUM (BLACKHAW VIBURNUM), 4' HEIGHT, BALLED AND BURLAPPED	EACH	10	10				
C2C043G5	SHRUB, LINDERA BENZOIN (SPICEBUSH), CONTAINER GROWN, 5-GALLON	EACH	12	12				
D2001772	EVERGREEN, PICEA ABIES (NORWAY SPRUCE), 6' HEIGHT, BALLED AND BURLAPPED	EACH	21	21				
D2001972	EVERGREEN, PICEA GLAUCA DENSATA (BLACK HILLS SPRUCE), 6' HEIGHT, BALLED AND BURLAPPED	EACH	40	40				
D2002460	EVERGREEN, PINUS FLEXILIS VANDERWOLF'S PYRAMID (VANDERWOLF'S PYRAMID LIMBER PINE), 5' HEIGHT, BALLED AND BURLAPPED	EACH	21	21				
E20080G1	VINE-CLEMATIS VIRGINIANA (VIRGINSBOWER CLEMATIS), 1-GALLON POT	EACH	8	8				
E20220G1	VINE-PARTHENOCISSUS TRICUSPIDATA (BOSTON IVY), 1-GALLON POT	EACH	1200	1200				
K0012970	PERENNIAL PLANTS, BULB TYPE	UNIT	9	9				
K0012990	PERENNIAL PLANTS, ORNAMENTAL TYPE,	UNIT	2	2				

SUMMARY OF QUANTITIES				CONSTRUCTION TYPE CODE				
CODE NO	ITEM	UNIT	TOTAL QUANTITIES	0031				
	GALLON POT							
K0013000	PERENNIAL PLANTS, PRAIRIE TYPE, 2" DIAMETER BY 4" DEEP PLUG	UNIT	3	3				
K0013020	PERENNIAL PLANTS, PRAIRIE TYPE, GALLON POT	UNIT	1	1				
K0013090	PERENNIAL PLANTS, WOODLAND TYPE, 2" DIAMETER BY 4" DEEP PLUG	UNIT	4	4				
K0013100	PERENNIAL PLANTS, WOODLAND TYPE, QUART POT	UNIT	2	2				
K0026850	PERENNIAL PLANT CARE	50 YD	600	600				
K0029632	WEED CONTROL, NON-SELECTIVE AND NON-RESIDUAL	GALLON	10	10				
K0036120	MULCH PLACEMENT 4"	50 YD	1200	1200				
K1003658	MOWING STAKES	EACH	30	30				
X2500930	SEEDING, CLASS 1B (MODIFIED)	ACRE	4.35	4.35				
X2502014	SEEDING, CLASS 4A (MODIFIED)	ACRE	4.2	4.2				
X2503100	MOWING	UNIT	10	10				
X2503315	INTERSEEDING, CLASS 4A (MODIFIED)	ACRE	5.05	5.05				
X2503321	INTERSEEDING, CLASS 5 (MODIFIED)	ACRE	5.05	5.05				

# 62K06 - SCHEDULE OF LANDSCAPE CONSTRUCTION AND ESTABLISHMENT WORK

Item	2020						2021											
	June	July	August	September	October	November	December	January	February	March	April	May	June	July	August	September	October	November
Plant Material Inspections	<b>PHASE I</b>																	
	<p>Submit completed plant inspection forms to IDOT by Nov 30 for spring planting season &amp; August 31/October 15 for fall planting season</p> <p>Submit completed plant inspection sheets to IDOT for FALL 2020 plantings (Initial Installations)</p> <p>IDOT inspects FALL 2020 plant material at various nurseries</p> <p>Submit completed plant inspection sheets to IDOT for SPRING 2021 plantings (Initial Installations)</p> <p>IDOT inspects SPRING 2021 plant material at various nurseries</p> <p>Submit completed plant inspection sheets to IDOT for FALL 2021 replacement plantings (if necessary)</p> <p>Submit completed plant inspection sheets to IDOT for SPRING 2022 plantings (Initial Installations) &amp; replacement plantings (if necessary)</p>																	
Tree, Shrub, & Vine Plantings	<b>PHASE II</b>																	
	<p>SPRING plantings of balled and burlapped: March 15 - May 30 Evergreens: March 15 to April 30</p> <p>FALL (ONLY) plantings of balled and burlapped: October 15 - Nov 30 Evergreens: August 15 to October 15</p> <p>Period of Establishment Plant Care: Weed &amp; Water (Included in cost of tree installation)</p> <p>REPLACEMENT PLANTINGS FALL: October 15 to November 30 SPRING: March 15 to May 15</p> <p style="text-align: center;">PERIOD OF ESTABLISHMENT INSPECTION BY IDOT</p> <p style="text-align: center;">FALL PLANTINGS (INITIAL INSTALLATION)</p> <p style="text-align: center;">FALL EVERGREEN PLANTINGS (INITIAL INSTALLATION)</p> <p style="text-align: center;">FALL PLANTINGS (INITIAL INSTALLATION)</p> <p style="text-align: center;">SPRING PLANTINGS (INITIAL INSTALLATION)</p> <p style="text-align: center;">SPRING PRAIRIE &amp; ORNAMENTAL PERENNIAL PLANTINGS</p> <p style="text-align: center;">LATE SUMMER PRAIRIE &amp; ORNAMENTAL PERENNIAL PLANTINGS</p> <p style="text-align: center;">WOODLAND PERENNIAL PLANTINGS</p> <p style="text-align: center;">FALL REPLACEMENT PLANTINGS</p> <p style="text-align: center;">FALL BULB PLANTING</p>																	
Perennial and Plug Plantings	<p>Woodland Perennial Plants April 1 to May 15</p> <p>Prairie &amp; Ornamental Perennial Plants SPRING: May 1 to June 15 LATE SUMMER: August 15 to September 15</p> <p>Bulb Planting October 15 to November 30</p>																	
	<p style="text-align: center;">PLACE MULCH AROUND EXISTING TREES</p> <p style="text-align: center;">PERENNIAL PLANT CARE AS DIRECTED BY THE ENGINEER</p> <p style="text-align: center;">SUPPLEMENTAL WATERING OF PERENNIALS AS DIRECTED BY THE ENGINEER</p>																	
<b>Supplemental Care</b>																		

MODEL: D:\proj\62k06\62k06.dwg  
 FILE NAME: 62k06.dwg  
 PROJECT: 62K06 - SCHEDULE OF LANDSCAPE CONSTRUCTION AND ESTABLISHMENT WORK  
 DATE: 2/2/2020  
 USER: jehomms

62K06 - SCHEDULE OF LANDSCAPE CONSTRUCTION AND ESTABLISHMENT WORK

Item	2022												2023					
	December	January	February	March	April	May	June	July	August	September	October	November	December	January	February	March	April	May
Plant Material Inspections	IDOT inspects SPRING 2022 plant material at various nurseries												IDOT inspects SPRING 2023 plant material at various nurseries					
	Submit completed plant inspection forms to IDOT by Nov 30 for spring planting season & August 31/October 15 for fall planting season												Submit completed plant inspection sheets to IDOT for SPRING 2023 plantings (initial installations) & replacement plantings (if necessary)					
Tree, Shrub, & Vine Plantings	SPRING plantings of balled and burlapped: March 15 - May 30 Evergreens: March 15 to April 30												Submit completed plant inspection sheets to IDOT for FALL 2022 replacement plantings (if necessary)					
	FALL (ONLY) plantings of balled and burlapped: October 15 - Nov 30 Evergreens: August 15 to October 15												PERIOD OF ESTABLISHMENT INSPECTION BY IDOT					
	Period of Establishment Plant Care: Weed & Water (included in cost of tree installation)												2					
	REPLACEMENT PLANTINGS FALL: October 15 to November 30 SPRING: March 15 to May 15												FALL REPLACEMENT PLANTINGS					
Perennial and Plug Plantings	Woodland Perennial Plants April 1 to May 15												WOODLAND SPRING PLANTINGS					
	Prairie & Ornamental Perennial Plants SPRING: May 1 to June 15 LATE SUMMER: August 15 to September 15												LATE SUMMER PRAIRIE & ORNAMENTAL PLANTINGS					
	Bulb Planting October 15 to November 30												FALL BULB PLANTING					
Supplemental Care	Mulch Placement, 4"												PERENNIAL PLANT CARE AS DIRECTED BY THE ENGINEER					
	Perennial Plant Care												PERENNIAL PLANT CARE AS DIRECTED BY THE ENGINEER					
	Supplemental Watering (PERENNIALS)												SUPPLEMENTAL WATERING OF PERENNIALS AS DIRECTED BY THE ENGINEER					
	Supplemental Watering (WOODY PLANTS)												SUPPLEMENTAL WATERING OF WOODY PLANTS (ESTABLISHMENT PERIOD COMPLETED) AS DIRECTED BY THE ENGINEER					

DESIGNED -	REVISIONS	STATE OF ILLINOIS	CALENDAR OF CONSTRUCTION & ESTABLISHMENT WORK	TOTAL SHEETS
DRAWN -	REVISIONS	DEPARTMENT OF TRANSPORTATION	LANDSCAPE REPAIR AND RESTORATION	SHEETS
CHECKED -	REVISIONS			NO.
DATE	REVISIONS			13
				8
				CONTRACT NO. 62K06
				ILLINOIS FED. AID PROJECT



**62K06 - SCHEDULE OF LANDSCAPE CONSTRUCTION AND ESTABLISHMENT WORK**

Item	2020						2021													
	June	July	August	September	October	November	December	January	February	March	April	May	June	July	August	September	October	November		
<b>Turf Restoration</b>	<b>PHASE I</b>																			
	Seeding, Class 1B (Modified) SPRING: April 1 to June 15 FALL: August 1 to November 1 DORMANT: Sept 16 to March 15				FALL SEEDING													FALL SEEDING		DORMANT SEEDING
	Seeding, Class 2A SPRING: April 1 to June 15 FALL: August 1 to November 1 DORMANT: Sept 16 to March 15				FALL SEEDING													FALL SEEDING		DORMANT SEEDING
Sodding, Salt Tolerant SPRING: March 15 to June 1 FALL: August 1 to Sept 15 DORMANT: Sept 16 to March 15					FALL SODDING													FALL SODDING		
<b>Native Areas Restoration</b>	<b>PHASE II</b>																			
	Weed Control, Non-Selective & Non-Residual (Ground preparation for Interseeding)				AS DIRECTED BY THE ENGINEER													AS DIRECTED BY THE ENGINEER		
	Interseeding/Seeding, Class 4 (Modified) SPRING: March 1 to May 15 FALL: October 15 to November 30 DORMANT: December 1 to March 1					FALL INTERSEEDING			DORMANT INTERSEEDING											FALL SEEDING/INTERSEEDING
	Interseeding/Seeding, Class 4A (Modified) SPRING: March 1 to May 15 FALL: October 15 to November 30 DORMANT: December 1 to March 1					FALL INTERSEEDING			DORMANT INTERSEEDING											FALL SEEDING/INTERSEEDING
	Interseeding, Class 5 (Modified) SPRING: March 1 to May 15 FALL: October 15 to November 30 DORMANT: December 1 to March 1					FALL INTERSEEDING			DORMANT INTERSEEDING											FALL SEEDING/INTERSEEDING
	Mowing (ACRE) - To Establish Native Seeded Areas																			AS DIRECTED BY THE ENGINEER
Mowing (UNIT) - To Establish Native Seeded Areas																			AS DIRECTED BY THE ENGINEER	

DESIGNED -	REVISIONS -	STATE OF ILLINOIS	CALENDAR OF CONSTRUCTION & ESTABLISHMENT WORK	F.A. RATE	SECTION	TOTAL SHEETS
DRAWN -	REVISIONS -	DEPARTMENT OF TRANSPORTATION	LANDSCAPE REPAIR AND RESTORATION	VAR	2019 110 15	SHEETS 13
CHECKED -	REVISIONS -					9
DATE -	REVISIONS -					CONTRACT NO. 62K06
USER NAME = dchris@dmv						ILLINOIS FED. AID PROJECT
PLOT SCALE = 99.8415' / in						
PLOT DATE = 2/7/2020						

62K06 - SCHEDULE OF LANDSCAPE CONSTRUCTION AND ESTABLISHMENT WORK

Item	2021												2022												2023											
	December	January	February	March	April	May	June	July	August	September	October	November	December	January	February	March	April	May	June	PHASE VI																
Turf Restoration	Seeding, Class 1B (Modified) SPRING: April 1 to June 15 FALL: August 1 to November 1 DORMANT: Sept 16 to March 15												PHASE III						PHASE IV						PHASE V						PHASE VI					
	Seeding, Class 2A SPRING: April 1 to June 15 FALL: August 1 to November 1 DORMANT: Sept 16 to March 15												SPRING SEEDING						FALL SEEDING						DORMANT SEEDING						SPRING SEEDING					
	Sodding, Salt Tolerant SPRING: March 15 to June 1 FALL: August 1 to Sept 15 DORMANT: Sept 16 to March 15												SPRING SEEDING						FALL SEEDING						DORMANT SEEDING						SPRING SEEDING					
Native Areas Restoration	Weed Control, Non-Selective & Non-Residual (Ground preparation for interseeding)												AS DIRECTED BY THE ENGINEER						AS DIRECTED BY THE ENGINEER						AS DIRECTED BY THE ENGINEER						AS DIRECTED BY THE ENGINEER					
	Interseeding/Seeding, Class 4 (Modified) SPRING: March 1 to May 15 FALL: October 15 to November 30 DORMANT: December 1 to March 1												DORMANT SEEDING/INTERSEEDING						DORMANT SEEDING/INTERSEEDING						FALL SEEDING/INTERSEEDING						SPRING SEEDING/INTERSEEDING					
	Interseeding/Seeding, Class 4 (Special) SPRING: March 1 to May 15 FALL: October 15 to November 30 DORMANT: December 1 to March 1												DORMANT SEEDING/INTERSEEDING						DORMANT SEEDING/INTERSEEDING						FALL SEEDING/INTERSEEDING						SPRING SEEDING/INTERSEEDING					
	Interseeding, Class 4A (Modified) SPRING: March 1 to May 15 FALL: October 15 to November 30 DORMANT: December 1 to March 1												DORMANT SEEDING/INTERSEEDING						DORMANT SEEDING/INTERSEEDING						FALL SEEDING/INTERSEEDING						SPRING SEEDING/INTERSEEDING					
	Mowing (ACRE) to establish native seeded areas												AS DIRECTED BY THE ENGINEER						AS DIRECTED BY THE ENGINEER						AS DIRECTED BY THE ENGINEER						AS DIRECTED BY THE ENGINEER					
Mowing (UNIT)												AS DIRECTED BY THE ENGINEER						AS DIRECTED BY THE ENGINEER						AS DIRECTED BY THE ENGINEER						AS DIRECTED BY THE ENGINEER						

USER NAME: DESIGNED: DRAWN: CHECKED: DATE:	REVISIONS: REVISED: REVISED: REVISED:	SCALE: 1" = 100' PLOT SCALE: 1" = 100' 8156 / in. PLOT DATE: 2/2/2020	STATE OF ILLINOIS DEPARTMENT OF TRANSPORTATION	CALENDAR OF CONSTRUCTION & ESTABLISHMENT WORK LANDSCAPE REPAIR AND RESTORATION	SECTION: 2019-110 LS	COUNTY: VARIOUS	TOTAL SHEETS: 13	SHEET NO.: 10
--	--	--	---	---	-------------------------	--------------------	---------------------	------------------

SCALE: SHEET OF SHEETS STA TO STA

ILLINOIS FIELD PROJECT CONTRACT NO. 62K06



Illinois Department of Transportation

LANDSCAPE REPAIR  
WORK ORDER  
CONTRACT 62K06

WORK ORDER NUMBER	PAGE: <u>      </u> OF <u>      </u>
MARKED ROUTE	LOCATION
COUNTY	MUNICIPALITY

WORK ORDER SUMMARY		
PAY CODE	PAY ITEM	QUANTITY

SPECIAL DISCOUNT

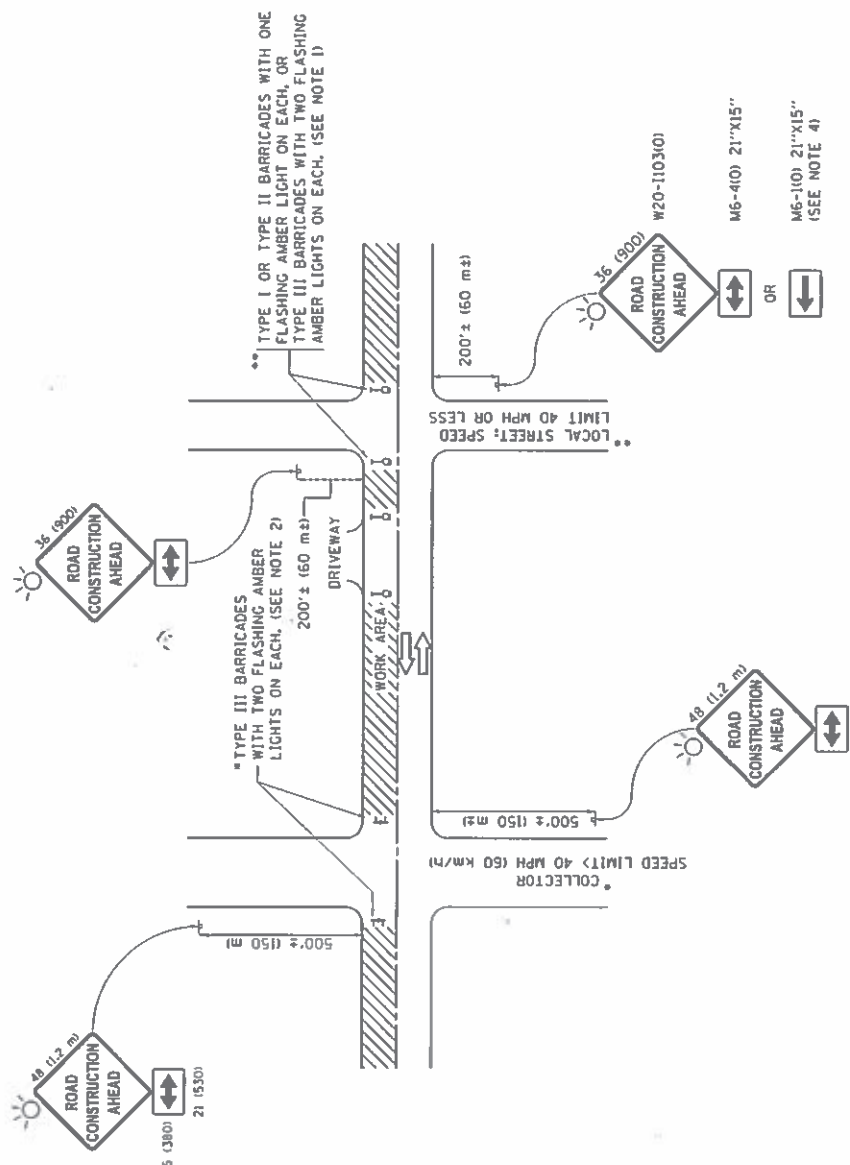
MEMORIZATION OF WORK ORDER	
IDOT Resident Engineer/Technician Signature	Contractor Initial
Date Work Order Issued	Contractor Completed

OFFICE USE ONLY	
INITIAL(S)	DATE
Prepared by:	
Measured in place by:	
Calculated by:	
Checked by:	

INSPECTION AND ACCEPTANCE OF COMPLETED WORK	
Date Work Ordered Inspected and Accepted	Inspector Signature
This is to certify that the work has been completed in conformance with contract	

CERTIFICATION OF COMPLETED WORK	
Contractor Signature	Date Work Order Completed

THIS WORK ORDER IS A SAMPLE FORM ONLY.



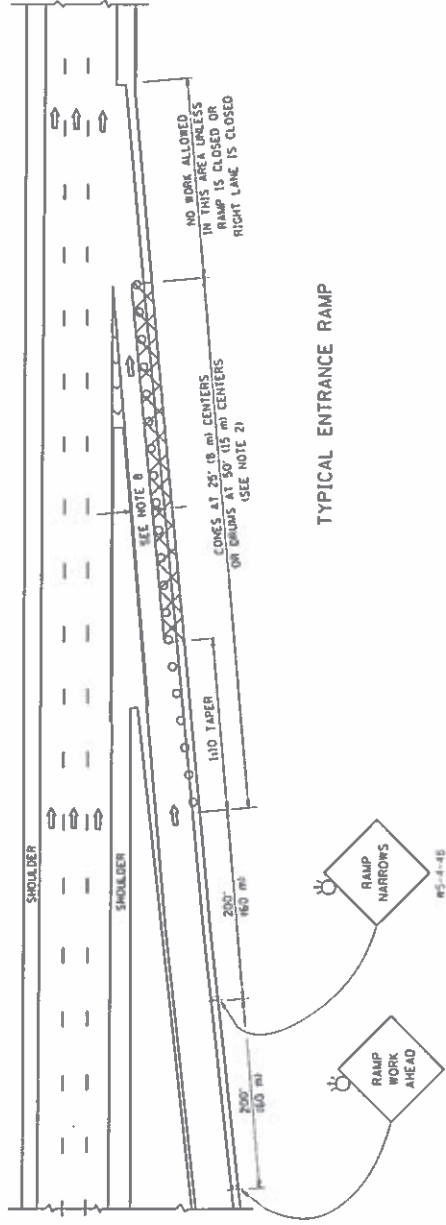
**NOTES:**

- SIDE ROAD WITH A SPEED LIMIT OF 40 MPH (60 km/h) OR LESS AS SHOWN ON THE DRAWING AND AS DIRECTED BY THE ENGINEER.
  - ONE "ROAD CONSTRUCTION AHEAD" SIGN 36 x 36 (900x900) WITH A FLASHER MOUNTED ON IT APPROXIMATELY 200' (60 m) IN ADVANCE OF THE MAIN ROUTE.
  - THE CLOSED PORTION OF THE MAIN ROUTE SHALL BE PROTECTED BY BLOCKING WITH TYPE I, TYPE II OR TYPE III BARRICADES, 1/3 OF THE CROSS SECTION OF THE CLOSED PORTION.
- SIDE ROAD WITH A SPEED LIMIT GREATER THAN 40 MPH (60 km/h) AS SHOWN ON THE DRAWING AND AS DIRECTED BY THE ENGINEER.
  - ONE "ROAD CONSTRUCTION AHEAD" SIGN 48 x 48 (12 m x 12 m) WITH A FLASHER MOUNTED ON IT APPROXIMATELY 500' (150 m) IN ADVANCE OF THE MAIN ROUTE.
  - THE CLOSED PORTION OF THE MAIN ROUTE SHALL BE PROTECTED BY BLOCKING WITH TYPE III BARRICADES, 1/2 OF THE CROSS SECTION OF THE CLOSED PORTION.
- CONES MAY BE SUBSTITUTED FOR BARRICADES OR DRUMS AT HALF THE SPACING DURING DAY OPERATIONS. CONES SHALL BE A MINIMUM OF 28 (710) IN HEIGHT.
- WHEN THE SIDE ROAD LIES BETWEEN THE BEGINNING OF THE MAINLINE SIGNING AND THE WORK ZONE, A SINGLE HEADED ARROW (M6-1) SHALL BE USED IN LIEU OF THE DOUBLE HEADED ARROW (M6-4).
- WHEN WORK IS BEING PERFORMED ON A SIDE ROAD OR DRIVEWAY, FOLLOW THE APPLICABLE STANDARDS. THE DIRECTIONAL ARROW (M6-1) OR (M6-4) SHALL BE COVERED OR REMOVED WHEN NO LONGER CONSISTENT WITH THE TRAFFIC CONTROL SET-UP.
- ADVANCE WARNING SIGNS ARE TO BE OMITTED ON DRIVEWAYS UNLESS OTHERWISE SPECIFIED IN THE PLANS OR BY THE ENGINEER.
- THE TRAFFIC CONTROL AND PROTECTION FOR SIDE ROADS, INTERSECTIONS, AND DRIVEWAYS SHALL BE INCLUDED IN THE COST OF SPECIFIED TRAFFIC CONTROL STANDARDS OR ITEMS.

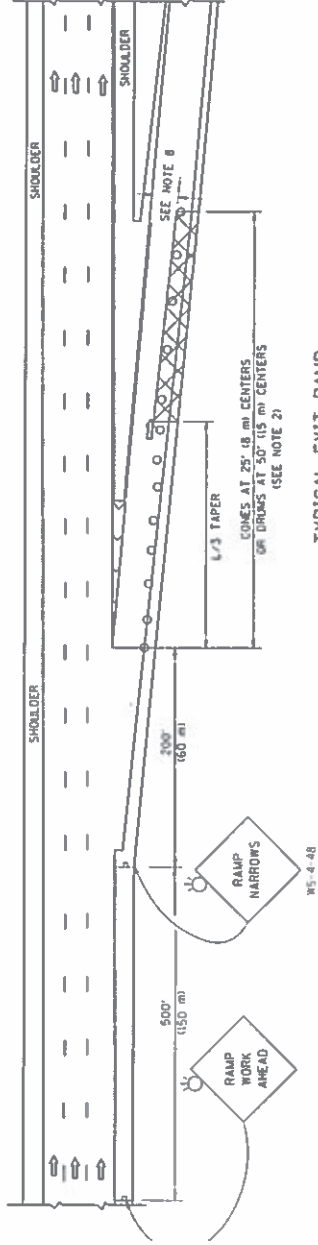
All dimensions are in inches (millimeters) unless otherwise shown.

USER NAME: PROJECT SCALE: 1/8" = 1'-0" PLOT DATE: 2/7/2020		DESIGNED: DRAWN: CHECKED: DATE:	REVISED: REVISED: REVISED: REVISED:	STATE OF ILLINOIS DEPARTMENT OF TRANSPORTATION	TRAFFIC CONTROL AND PROTECTION FOR SIDE ROADS, INTERSECTIONS, AND DRIVEWAYS (TC-10)	COUNTY: VARIOUS SECTION: 2019 110-LS SHEETS: 13 TOTAL SHEETS: 13	CONTRACT NO: 62K06 ILLINOIS FED. AID PROJECT
--	--	--	--	---	--	---	---

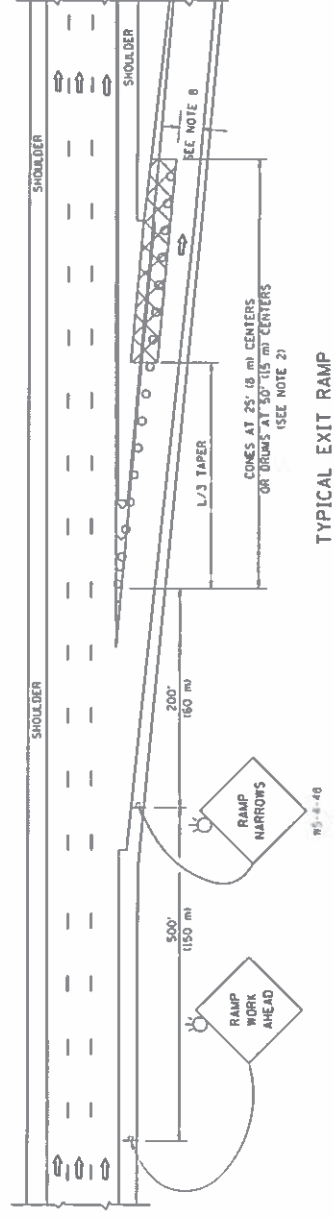
PARTIAL RAMP CLOSURE DETAILS



TYPICAL ENTRANCE RAMP



TYPICAL EXIT RAMP



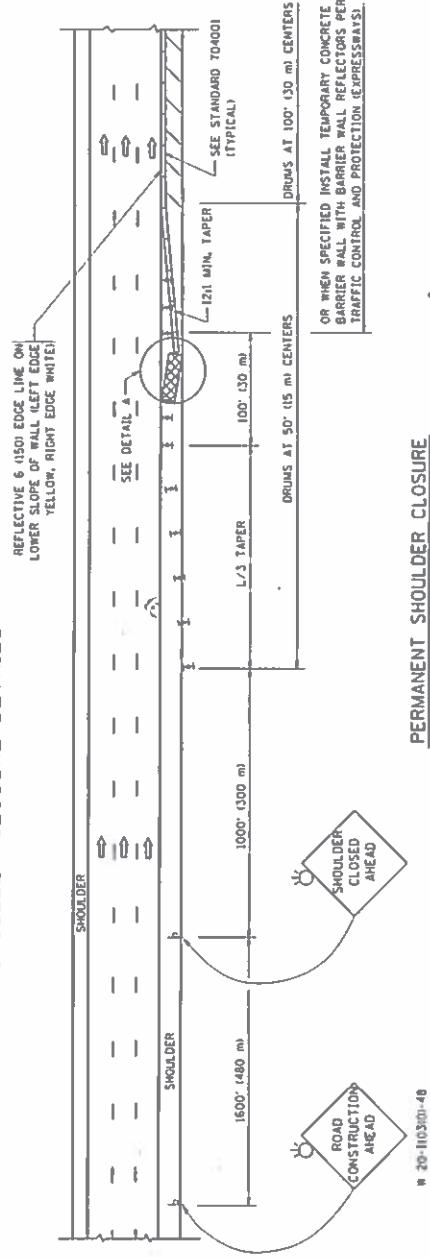
SYMBOLS

- ACTIVE WORK AREA
- SIGN ON PORTABLE OR PERMANENT SUPPORT
- FLAGGER WITH CONTROL SIGN
- TYPE II BARRICADE OR DRUM
- CONE, DRUM OR BARRICADE
- IMPACT ATTENUATOR OF TYPE AND TEST LEVEL SPECIFIED

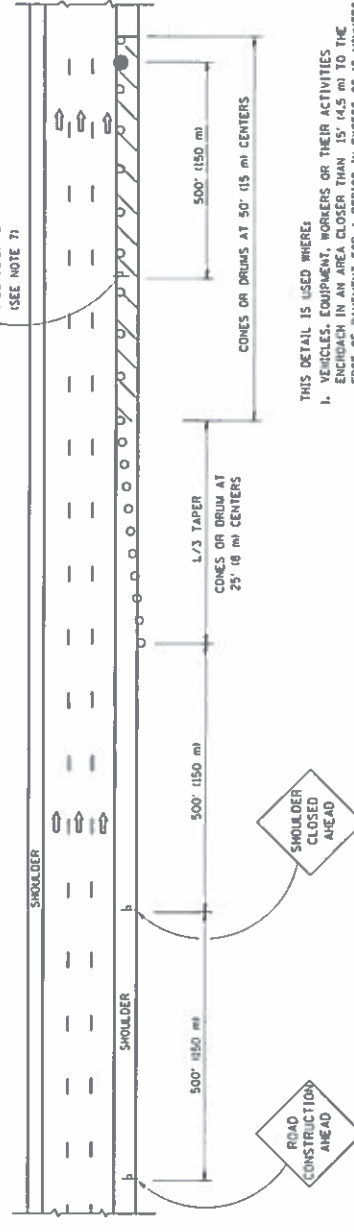
GENERAL NOTES

1. THE "L" DISTANCE EQUALS:
  - FORMULAS
  - SPEED LIMIT
  - 45 mph (80 km/h) METRIC
  - OR GREATER L=0.65(SWMS)
  - ENGLISH L=0.75(SWMS)
  - SW = WIDTH OF OFFSET IN FEET (METERS)
  - S = NORMAL POSTED SPEED MPH (KM/H)
2. TYPE II BARRICADES OR DRUMS ARE REQUIRED FOR ALL NIGHTTIME CLOSURES. TYPE II BARRICADES OR DRUMS WITH UNIDIRECTIONAL STEADY BURN LIGHTS ARE REQUIRED FOR DELINEATING OBSTACLES, EXCAVATIONS, OR HAZARDS EXCEEDING 100 FT (30m) IN LENGTH AT NIGHT.
3. ALL SIGNS SHALL BE POST MOUNTED IF THE CLOSURE TIME EXCEEDS FOUR DAYS.
4. FLASHING LIGHTS SHALL BE USED DURING THE HOURS OF DARKNESS AND SHALL BE INSTALLED ABOVE THE FIRST TWO SETS OF SIGNS.

SHOULDER CLOSURE DETAILS



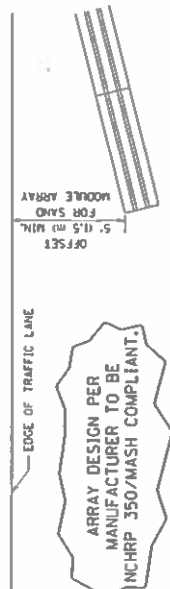
PERMANENT SHOULDER CLOSURE



DAYTIME SHOULDER CLOSURE

THIS DETAIL IS USED WHERE:

1. VEHICLES, EQUIPMENT, WORKERS OR THEIR ACTIVITIES THROUGH IN AN AREA CLOSER THAN 25'-18" TO THE EDGE OF PAVEMENT FOR A PERIOD IN EXCESS OF 15 MINUTES.



DETAIL "A" IMPACT ATTENUATOR, TEMPORARY (SEE NOTE 5)

5. THE IMPACT ATTENUATOR, TEMPORARY IS NOT REQUIRED WHEN THE TEMPORARY CONCRETE BARRIER WALL IS PROTECTED BY OR IS TIED INTO THE EXISTING CHORDRAIL. IF OFFSET IS LESS THAN 5 FEET USE NARROW USE TYPE DEVICE TO MEET IN-CRHP350/MASH.
6. AUTHORIZATION FROM THE DISTRICT'S BUREAU OF TRAFFIC IS REQUIRED FOR ALL FREEWAY CLOSURES.
7. THE FLAGGER AND FLAGGER SIGN ARE REQUIRED AT THE ABOVE WORK SITES WHEN:
  - a. FOUR OR MORE WORK VEHICLES ENTER THE TRAFFIC LANES IN A ONE HOUR PERIOD.
  - b. THE WORKER'S FREQUENT ENCROACHMENT INTO THE LANE OPEN TO TRAFFIC.
8. THE FLAGGER SHALL BE STATIONED APPROXIMATELY 100' (30 m) TO 200' (60 m) IN ADVANCE OF THE WORKERS.
9. 12' MIN. WIDTH TANGENT SECTION
10. 15' MIN. WIDTH CURVE SECTION.

ALL DIMENSIONS ARE IN INCHES (MILLIMETERS) UNLESS OTHERWISE SHOWN.

USLR: NABH = geopraxis	DESIGNED	REVISION	STATE OF ILLINOIS	TRAFFIC CONTROL DETAIL FOR FREEWAY SHOULDER CLOSURES AND PARTIAL RAMP CLOSURE (TC-17)	TOTAL SHEETS
PLOT SCALE = 1/8" = 1'-0"	DRAWN	REVISION	DEPARTMENT OF TRANSPORTATION	CLOSURES AND PARTIAL RAMP CLOSURE (TC-17)	SHEETS
PLOT DATE = 2/7/20	CHECKED	REVISION			NO.
	DATE	REVISION			
			SCALE	SECTION	COUNTY
				2019 110 LS	VARIOUS
					13
					13
					CONTRACT NO. 62K06
					ILLINOIS I RD AND PROJECT