

04-24-2015 LETTING ITEM 143
INDEX OF SHEETS

CIVIL PLANS

- 01 COVER SHEET
- 02 DETAILS & SUMMARY OF QUANTITIES
- 03 DETAILS, TYPICAL CROSS-SECTIONS, & GENERAL NOTES
- 04-05 EXISTING TOPOGRAPHY & PROPOSED IMPROVEMENTS
- 06-09 CROSS SECTIONS

SIGNAL PLANS

- 10-11 PROPOSED SIGNAL MODERNIZATION - ARMOUR ROAD
- 12 CABLE PLAN, PHASING DIAGRAM - ARMOUR ROAD
- 13-14 PROPOSED SIGNAL MODERNIZATION - MALL ENTRANCE
- 15 CABLE PLAN, PHASING DIAGRAM - MALL ENTRANCE

HIGHWAY STANDARDS

- 000001-06 STANDARD SYMBOLS, ABBREVIATIONS, & PATTERNS
- 424001-08 PERPENDICULAR CURB RAMPS
- 606001-06 CONCRETE CURB TYPE B AND COMBINATION CONCRETE CURB AND GUTTER
- 701101-04 OFF ROAD OPERATIONS, MULTILANE
- 701601-09 URBAN LANE CLOSURE, MULTILANE 2W
- 701701-09 URBAN LANE CLOSURE - MULTILANE INTERSECTION
- 701901-04 TRAFFIC CONTROL DEVICES

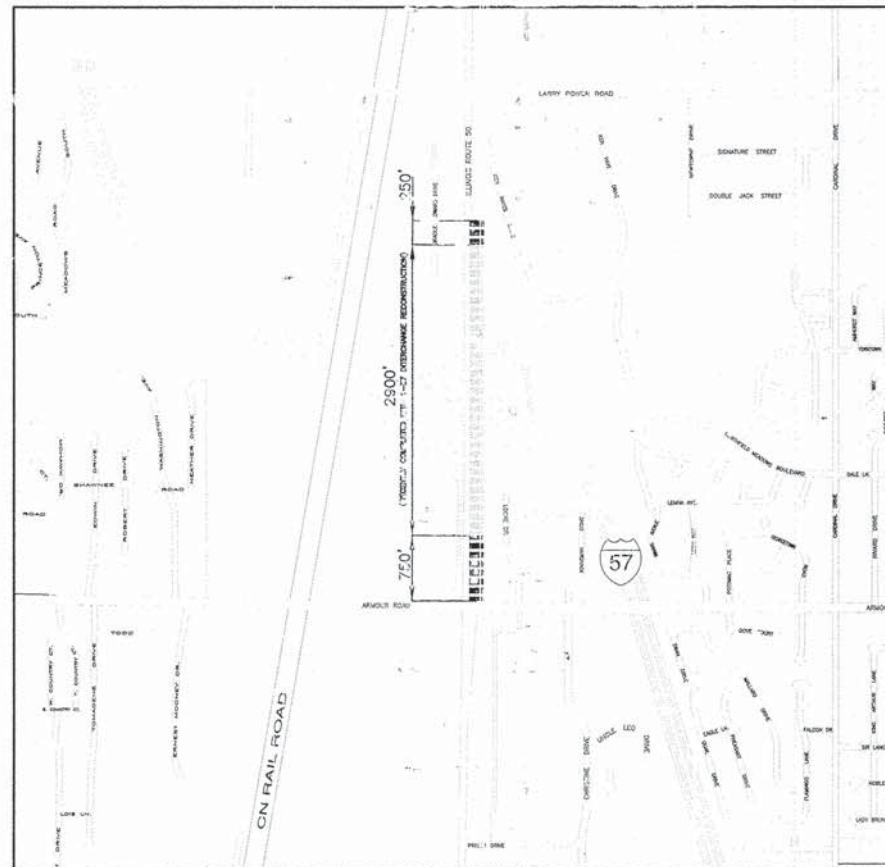
STATE OF ILLINOIS
DEPARTMENT OF TRANSPORTATION
DIVISION OF HIGHWAYS

PLANS FOR PROPOSED
 ILLINOIS TRANSPORTATION ENHANCEMENT PROGRAM
 ILLINOIS ROUTE 50 SHARED PATH
 ARMOUR ROAD TO MALL ENTRANCE
 KANKAKEE COUNTY
 VILLAGE OF BRADLEY
 SECTION NO.: 10-00097-00-BT
 PROJECT NO.: TE-00D3(074)
 JOB NO.: C-93-012-13

ROUTES	SECTION	COUNTY	TOTAL SHEETS	SHEET NO.
IL ROUTE 50 - F.A.P. 840 ARMOUR ROAD	10-00097-00-BT	KANKAKEE	15	01

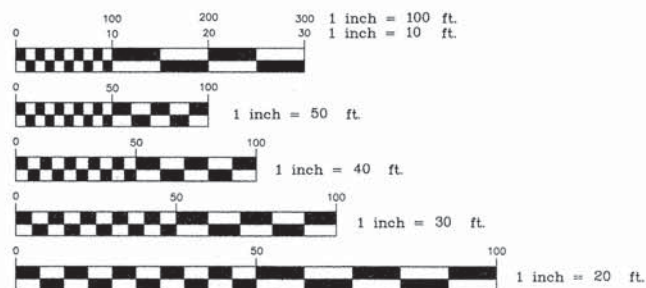
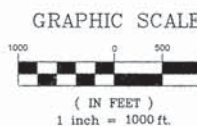


LOCATION OF SECTION INDICATED THUS: —



TOWNSHIP 31 NORTH, RANGE 12 EAST

TOTAL PROJECT LENGTH: 3900 FEET (0.739 MILES)
 NET PROJECT LENGTH: 1000 FEET (0.189 MILES)



FULL SIZE PLANS HAVE BEEN PREPARED USING STANDARD ENGINEERING SCALES. REDUCED SIZED PLANS WILL NOT CONFORM TO STANDARD SCALES. IN MAKING MEASUREMENTS ON REDUCED PLANS, THE ABOVE SCALES MAY BE USED.

CONTRACT NO.: 87542

J.U.L.I.E.
 JOINT UTILITY LOCATION
 INFORMATION FOR EXCAVATION
 1-800-892-0123

ROADWAY	FUNCTIONAL CLASSIFICATION	CURRENT ADT (2005)	DESIGN ADT (2020)	DESIGN SPEED
ILLINOIS ROUTE 50	URBAN PRINCIPAL ARTERIAL	62600	88000	45 MPH
ARMOUR ROAD	URBAN MINOR ARTERIAL	36800	51800	40 MPH

STATE OF ILLINOIS
DEPARTMENT OF TRANSPORTATION
DIVISION OF HIGHWAYS

APPROVED: 1/22/15 (DATE)
Bruce N. Adams (SIGNATURE)
 VILLAGE PRESIDENT, VILLAGE OF BRADLEY

PASSED: 2-23-2015 (DATE)
Don R. E. (SIGNATURE)
 DISTRICT #3 ENGINEER OF LOCAL ROADS & STREETS

RELEASING FOR BID BASED ON LIMITED REVIEW: 2-23-2015 (DATE)
Paul A. Loetse (SIGNATURE)
 DEPUTY DIRECTOR OF HIGHWAYS, REGION #2 ENGINEER

Joel Greer (SIGNATURE) 1/20/2015 (DATE)
 JOEL GREER P.E. # 062-062541
 EXPIRATION DATE OF LICENSE 11/2015



SIGNED: *[Signature]*
 Daniel P. Brinkman
 EXPIRES: 11/30/2015
 DATE: 1/19/15
 SHEETS: T1-T6

PRINTED BY THE AUTHORITY
 OF THE STATE OF ILLINOIS

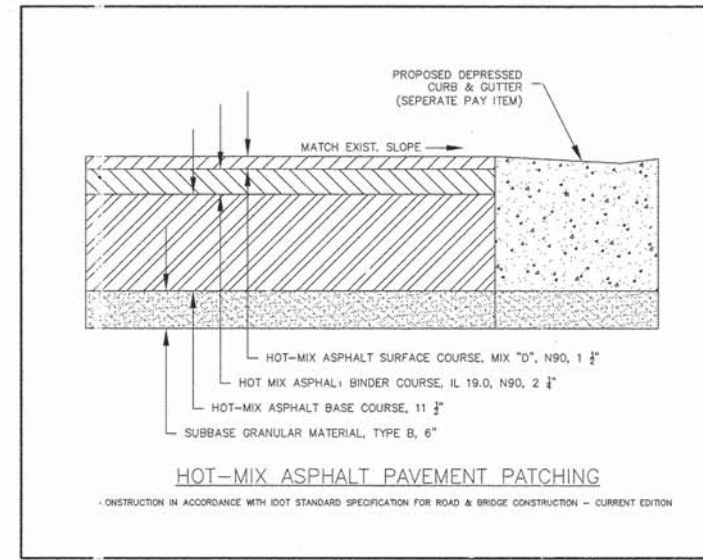
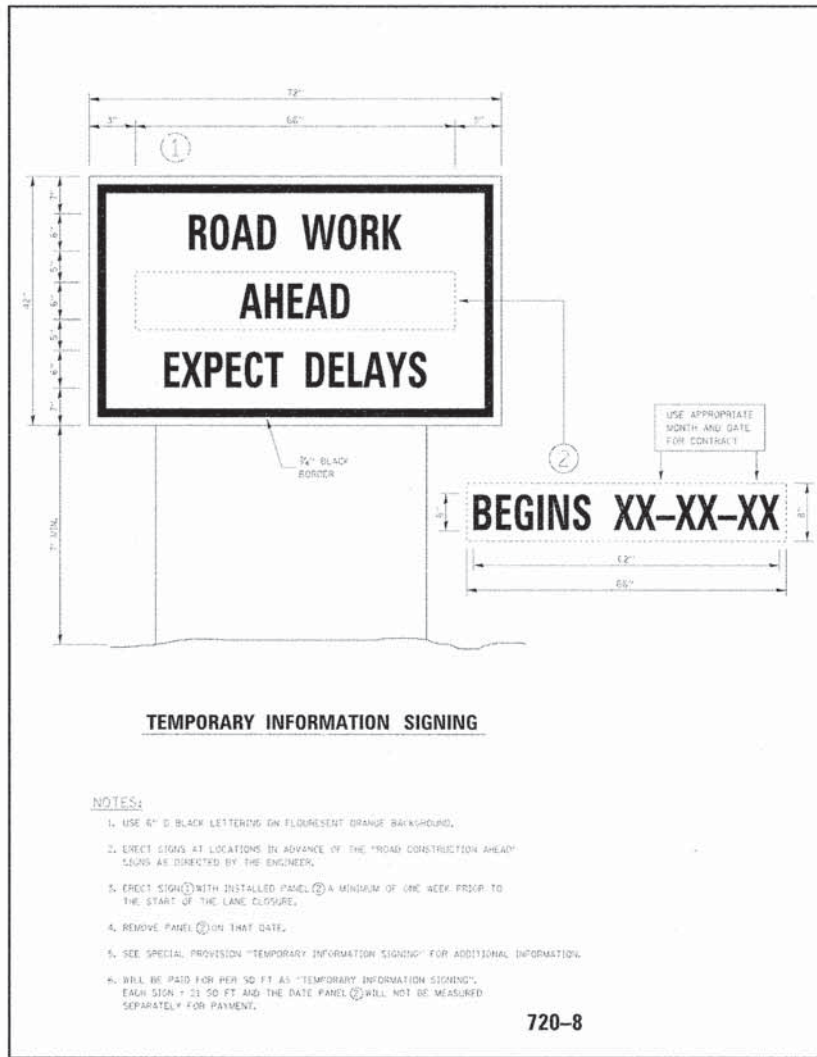


REVISIONS		
DATE	BY	DESCRIPTION
06/20/14	JWG/CAG	IDOT REVISIONS
11/12/14	JWG/CAG	IDOT REVISIONS
12/19/14	JWG/CAG	IDOT REVISIONS

ILLINOIS DEPARTMENT OF TRANSPORTATION
 IEP - ILLINOIS ROUTE 50 SHARED PATH
 ARMOUR ROAD TO MALL ENTRANCE

COVER SHEET

SCALE: _____ DRAWN BY: JWG
 DATE: 10/21/11 CHECKED BY: _____



	HMA PATCHES (BOTTOM)	INCIDENTAL HMA SURFACE	HMA PATCHES (TOP 2')
PG GRADE **	SBS PG 70-22	PG 64-22	SBS PG 70-22
DESIGN AIR VOIDS	4.0% @ N90	4.0% @ N50	4.0% @ N90
MIXTURE COMPOSITION	IL 19.0FG	IL 9.5	IL 9.5
FRICTION AGGREGATE		MIXTURE C	MIXTURE D
DENSITY TEST METHOD	CORES	CORES	CORES

Location	3x2 Box Culvert	4" CPP Storm Sewer	12" RCP Storm Sewer	18" RCP Storm Sewer	End Section
	FOOT	Ln.Ft.	Ln.Ft.	Ln.Ft.	EACH
STA. START					
STA. END					
South Multi Use Path					
STA. 1290+72.73 OFF: 82.03R		STA. 1290+72.56 OFF: 53.83R		28	
STA. 1294+51.89 OFF: 79.76R		STA. 1294+51.76 OFF: 57.44R		23	
STA. 1297+13.45 OFF: 78.20R		STA. 1297+13.32 OFF: 57.02R	25		
North Multi Use Path					
STA. 1328+01.61 OFF: 55.62R	6	STA. 1328+01.61 OFF: 57.62R			
STA. 1328+01.61 OFF: 55.62R					1
STA. 1330+07.54 OFF: 52.37R		STA. 1330+07.54 OFF: 52.92R		30	
TOTAL	6	25	51	30	1

CONSTRUCTION TYPE CODE: 0028				
SUMMARY OF QUANTITIES				
ITEM NUMBER	ITEMS	UNIT	QUANTITY	
20400800	FURNISHED EXCAVATION	CU YD	800	
28000500	INLET AND PIPE PROTECTION	EACH	5	
28000510	INLET FILTERS	EACH	6	
28100105	STONE RIPRAP, CLASS A3	SQ YD	180	
35101800	AGGREGATE BASE COURSE, TYPE B 6"	SQ YD	1006	
40800050	INCIDENTAL HOT MIX ASPHALT SURFACING	TON	107	
42400200	PORTLAND CEMENT CONCRETE SIDEWALK 5"	SQ FT	473	
42400800	DETECTABLE WARNINGS	SQ FT	86	
44000500	COMBINATION CURB AND GUTTER REMOVAL	FOOT	86	
44200176	PAVEMENT PATCHING, TYPE I, 15 INCH	SQ YD	6	
44200180	PAVEMENT PATCHING, TYPE II, 15 INCH	SQ YD	27	
50800105	REINFORCEMENT BARS	POUND	30	
54001001	BOX CULVERT END SECTIONS, CULVERT NO. 1	EACH	1	
54002020	EXPANSION BOLTS 3/4 INCH	EACH	16	
54010302	PRECAST CONCRETE BOX CULVERTS 3' X 2'	FOOT	6	
550A0050	STORM SEWERS, CLASS A, TYPE 1 12"	FOOT	51	
550A0090	STORM SEWERS, CLASS A, TYPE 1 18"	FOOT	30	
60107600	PIPE UNDERDRAINS 4"	FOOT	25	
60605000	COMBINATION CONCRETE CURB AND GUTTER, TYPE B-6.24	FOOT	70	
67100100	MOBILIZATION	L SUM	1	
72400500	RELOCATE SIGN PANEL ASSEMBLY - TYPE A	EACH	1	
72400710	RELOCATE SIGN PANEL - TYPE 1	SQ FT	5	
78000400	THERMOPLASTIC PAVEMENT MARKING - LINE 6"	FOOT	465	
78000600	THERMOPLASTIC PAVEMENT MARKING - LINE 12"	FOOT	359	
78000650	THERMOPLASTIC PAVEMENT MARKING - LINE 24"	FOOT	50	
81028360	UNDERGROUND CONDUIT, PVC, 2 1/2" DIA.	FOOT	36	
85000200	MAINTENANCE OF EXISTING TRAFFIC SIGNAL INSTALLATION	EACH	2	
87301215	ELECTRIC CABLE IN CONDUIT, SIGNAL NO. 14 2C	FOOT	906	
87301225	ELECTRIC CABLE IN CONDUIT, SIGNAL NO. 14 3C	FOOT	930	
87502440	TRAFFIC SIGNAL POST, GALVANIZED STEEL 10 FT.	EACH	2	
87800100	CONCRETE FOUNDATION, TYPE A	FOOT	8	
87900200	DRILL EXISTING HANDHOLE	EACH	2	
88102717	PEDESTRIAN SIGNAL HEAD, LED, 1 FACE, BRACKET MOUNTED WITH COUNTDOWN TIMER	EACH	4	
89502200	MODIFY EXISTING CONTROLLER	EACH	2	
X2501020	SEEDING, CLASS 2A (SPECIAL)	ACRE	0.70	
X7010216	TRAFFIC CONTROL AND PROTECTION, (SPECIAL)	L SUM	1	
X8800101	PEDESTRIAN PUSH-BUTTON, SPECIAL	EACH	4	
Z0030850	TEMPORARY INFORMATION SIGNING	SQ FT	63	

* SEE DETAILS AND SPECIAL PROVISIONS
 Δ SPECIALTY ITEMS

M. GINGERICH, GEREAX & ASSOCIATES

240 N. Industrial Drive
Bredley, Illinois 60915
815-939-4921
FAX: 815-939-9810

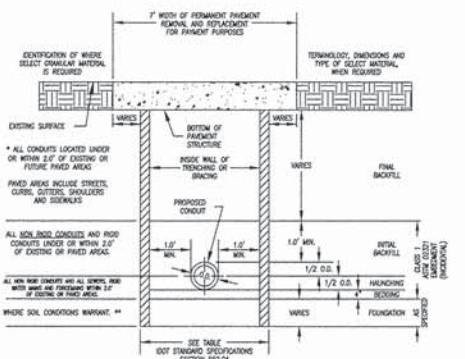
REVISIONS		
DATE	BY	DESCRIPTION
06/20/14	JWG/CAG	IDOT REVISIONS
11/12/14	JWG/CAG	IDOT REVISIONS
12/19/14	JWG/CAG	IDOT REVISIONS
01/09/15	JWG/CAG	IDOT REVISIONS

ILLINOIS DEPARTMENT OF TRANSPORTATION
ITEP - ILLINOIS ROUTE 50 SHARED PATH
ARMOUR ROAD TO MALL ENTRANCE

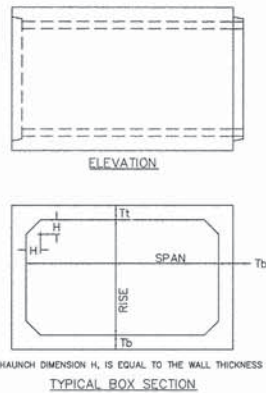
DETAILS & SUMMARY OF QUANTITIES

SCALE: _____ DRAWN BY: JWG
DATE: 10/21/11 CHECKED BY: _____

X:\PROJECTS\10-00097-00-BT\10-00097-00-BT-SHEETS\10-00097-00-BT-SHEETS-02-03-Details.dwg, SHEET 02-03-DETAILS, 1/21/2015 3:39:51 PM, gmg@idot.gov



**TYPICAL TRENCH BACKFILL DETAIL
STORM & SANITARY SEWERS
N.T.S.**

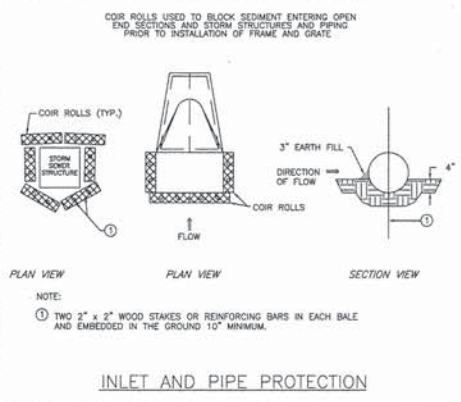


**TYPICAL BOX SECTION
PRECAST CONCRETE BOX SECTION DETAIL**

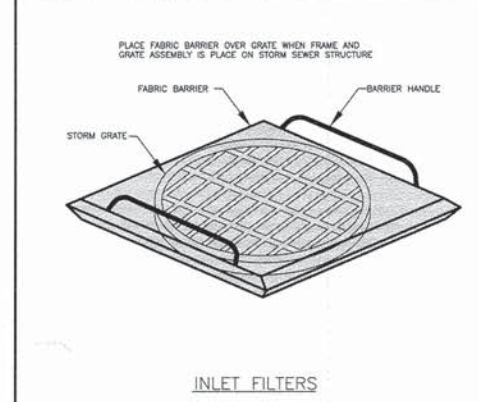
SPAN FEET	T1, INCHES	T2, INCHES	T3, INCHES
M 259	M 273	M 259	M 273
M 259	M 273	M 259	M 273
3	4	7	4
4	5	7 1/2	5
5	6	8	6

TYPICAL THICKNESS

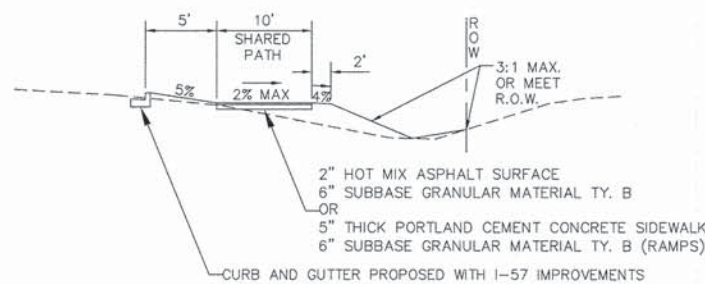
PRECAST CONCRETE BOX SECTION DETAIL



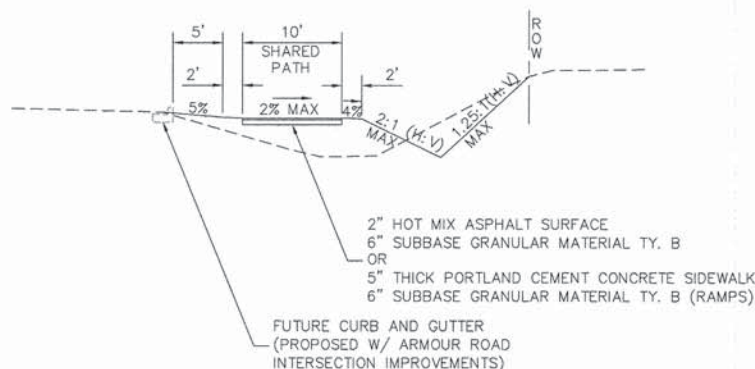
INLET AND PIPE PROTECTION



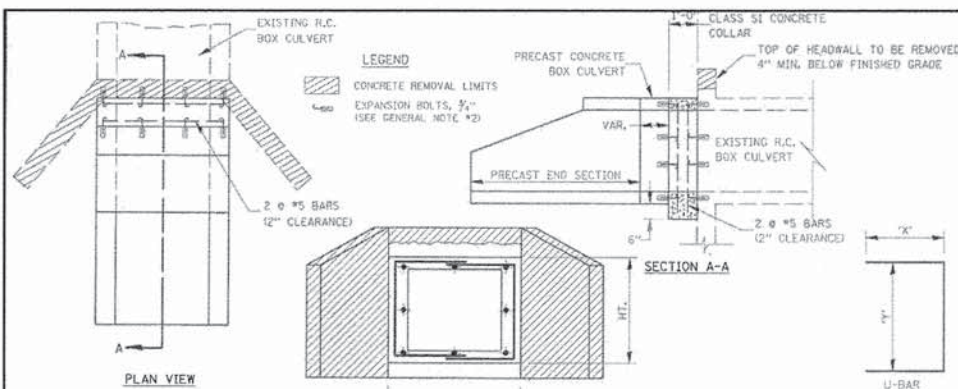
INLET FILTERS



PROPOSED NORTH TYPICAL CROSS-SECTION AT MALL ENTRANCE



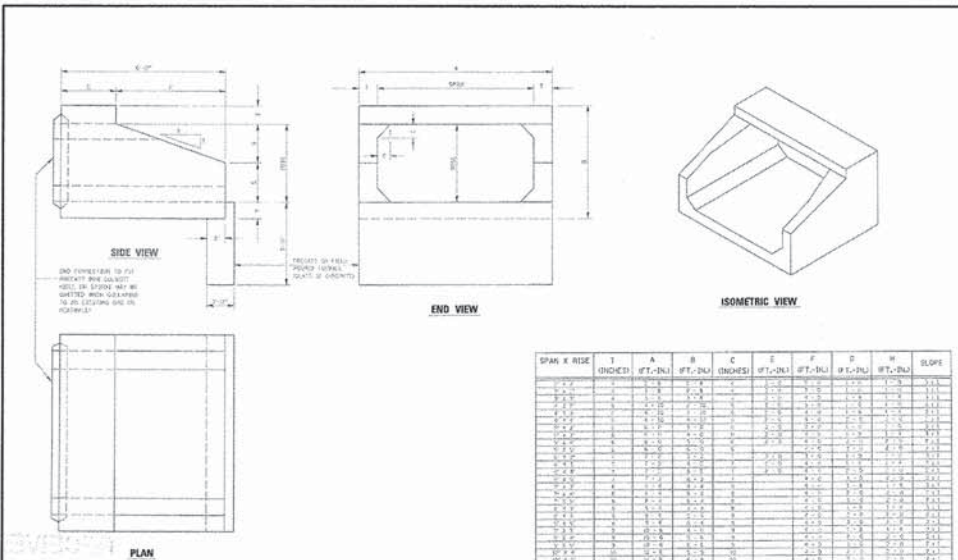
PROPOSED SOUTH TYPICAL CROSS-SECTION AT ARMOUR ROAD



LOCATION	EXISTING CULVERT SIZE	PRECAST CULVERT EXTENSION	U-BAR	CONC. COLLAR	REINFORCEMENT BARS	3/4" DIA. EXPANSION BOLTS	
FT X FT	FT X FT	IN	IN	CU YD	POUND	EACH	
STA. 1328+02 OFF. 55.6'	3'X2'	3'X2'	30"	28"	0.50	30	16

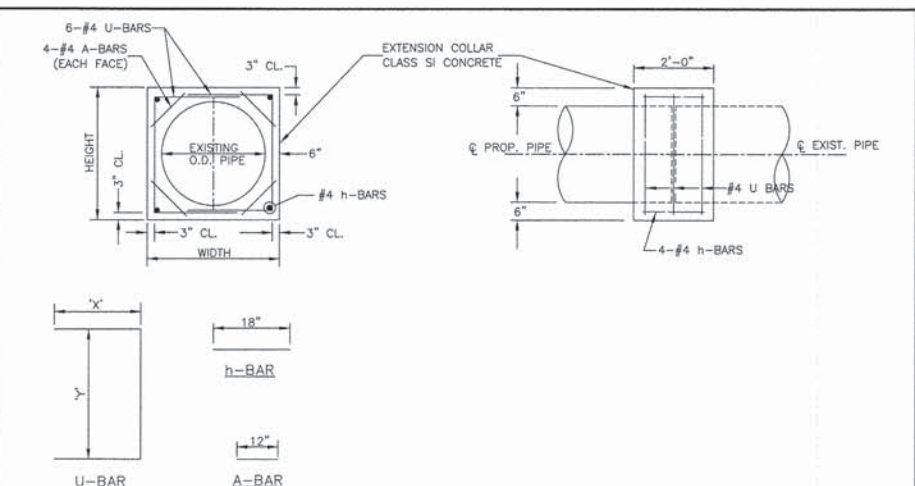
COLLAR DETAIL (PRECAST BOX CULVERT EXTENSION OF BOX CULVERT)

- GENERAL NOTES**
- CLASS SI CONCRETE SHALL BE USED THROUGHOUT. THE INSIDE DIMENSIONS OF THE CLASS SI CONCRETE COLLAR SHALL BE THE SAME AS THE NEW PRECAST CONCRETE BOX CULVERT. THE COST OF CLASS SI CONCRETE SHOWN SHALL BE INCLUDED IN THE COST FOR REINFORCEMENT BARS.
 - EXPANSION BOLTS SHALL CONSIST OF SELF DRILLING EXPANSION SHIELDS AND 3/4" HOOKED BOLTS. HOOKED BOLTS SHALL EXTEND A MINIMUM OF 9" INTO NEW CONCRETE. BOLTS SHALL BE PLACED IN EACH CORNER AND AT 18" MAXIMUM CENTERS. MINIMUM CERTIFIED PROOF LOADING = 4080 LBS.



PRECAST CONCRETE BOX CULVERT END SECTION

SPAN X RISE	A	B	C	D	E	F	G	H	I	J	K	L	M	N	O	P	Q	R	S	T	U	V	W	X	Y	Z
3' X 2'	3' X 2'	3' X 2'	3' X 2'	3' X 2'	3' X 2'	3' X 2'	3' X 2'	3' X 2'	3' X 2'	3' X 2'	3' X 2'	3' X 2'	3' X 2'	3' X 2'	3' X 2'	3' X 2'	3' X 2'	3' X 2'	3' X 2'	3' X 2'	3' X 2'	3' X 2'	3' X 2'	3' X 2'	3' X 2'	3' X 2'



CULVERT COLLAR CONNECTION DETAIL

- GENERAL NOTES**
- ALL PROPOSED ELEVATIONS SHOWN ON THE PLANS ARE FINISHED SURFACE ELEVATIONS UNLESS OTHERWISE SPECIFIED.
 - AGGREGATE BASE COURSE MATERIALS SHALL BE APPLIED AND COMPACTED IN ACCORDANCE WITH THE APPLICABLE ARTICLES OF THE IDOT SPECIFICATIONS.
 - PRIOR TO COMMENCING ANY FILL OPERATIONS IN PAVEMENT OR SHOULDER AREAS, ALL TOPSOIL IS TO BE REMOVED.
 - ANY FIELD TILES ENCOUNTERED DURING CONSTRUCTION SHALL BE REPAIRED AND RETURNED TO ITS ORIGINAL INTEGRITY, ROUTE, AND FUNCTION.
 - SURPLUS EXCAVATED SOIL MATERIALS SHALL BE REMOVED FROM THE SITE.
 - ALL FILLS SHALL BE COMPACTED LIFTS WITH A MAXIMUM THICKNESS OF 6 INCHES OR AS OTHERWISE SPECIFIED BY THE ENGINEER.
 - FINAL TOPSOIL THICKNESS IN LANDSCAPE AREAS SHALL BE A MINIMUM OF 4".
 - DISTURBED AREAS SHALL BE RESTORED IN ACCORDANCE WITH THE SPECIAL PROVISIONS.
 - CONTRACTOR SHALL PROTECT ANY EXISTING LANDSCAPE ITEM. ANY DAMAGE SHALL BE REPLACED AT CONTRACTORS COST.
 - FINISHED DITCHES SHALL DRAIN TO THE SATISFACTION OF THE ENGINEER.
 - THE COST FOR FRAME AND GRATES INSTALLED ON STRUCTURES SHALL BE INCLUDED IN THE COST OF THE STRUCTURE.
 - REMOVAL OF EXISTING END SECTIONS, HEADWALLS, STORM SEWER SECTIONS, OR SALVAGING EXISTING END SECTIONS SHALL BE INCLUDED IN THE COST FOR STORM SEWER.

M. GINGERICH, GEREUX & ASSOCIATES
 240 N. Industrial Drive
 Bradley, Illinois 60915
 815-939-4921
 FAX: 815-939-9810

DATE	BY	DESCRIPTION
06/20/14	JWG/CAG	IDOT REVISIONS
11/12/14	JWG/CAG	IDOT REVISIONS
12/19/14	JWG/CAG	IDOT REVISIONS
01/09/15	JWG/CAG	IDOT REVISIONS

ILLINOIS DEPARTMENT OF TRANSPORTATION
 ITEP - ILLINOIS ROUTE 50 SHARED PATH
 ARMOUR ROAD TO MALL ENTRANCE

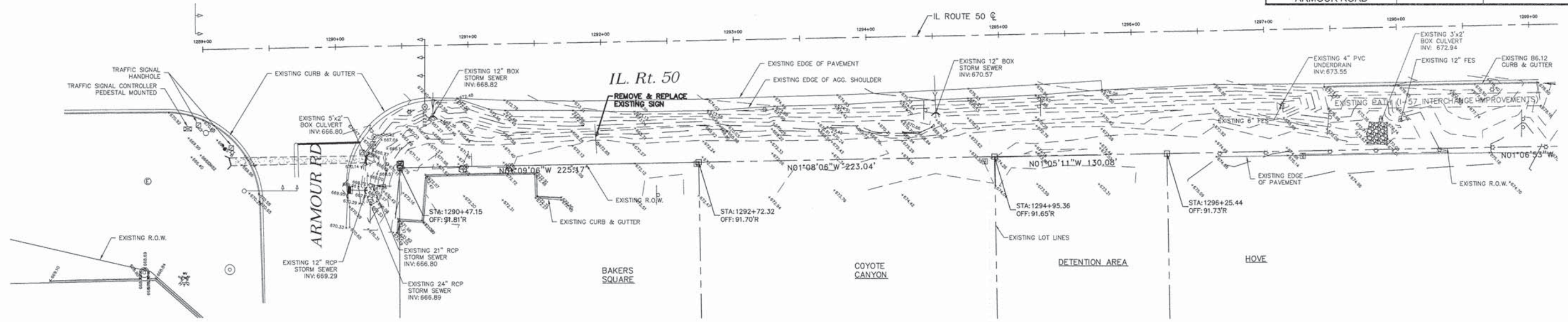
DETAILS & GENERAL NOTES

SCALE: DATE: 10/21/11

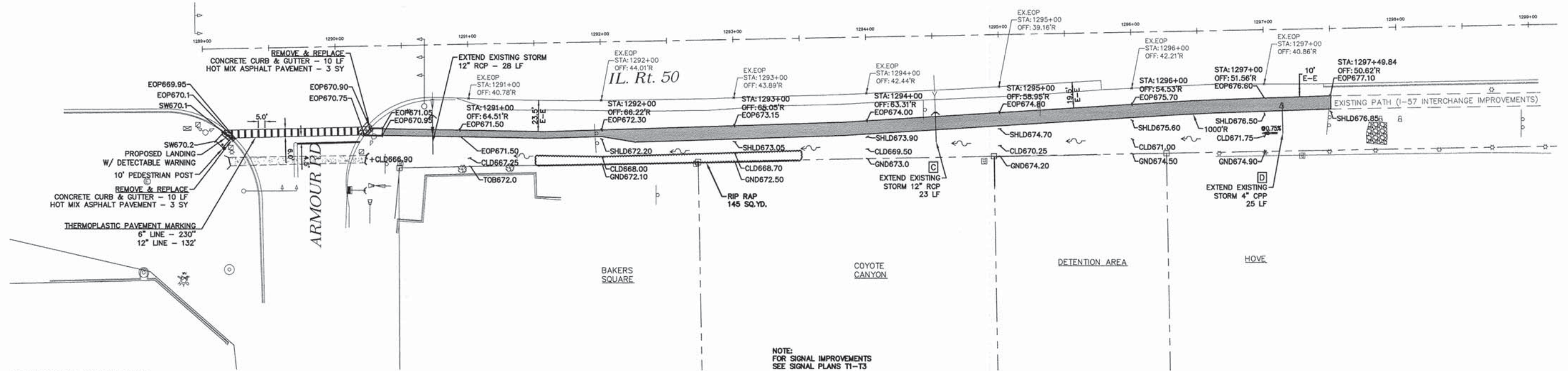
DRAWN BY: JWG
 CHECKED BY:

X:\PROJECTS\M-100\1002-BRADLEY\1002-BRADLEY\1002-BRADLEY.DWG, SHEET 03-DETAILS, 10/21/15 3:39:55 PM, gprehnitz

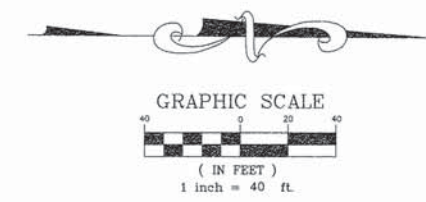
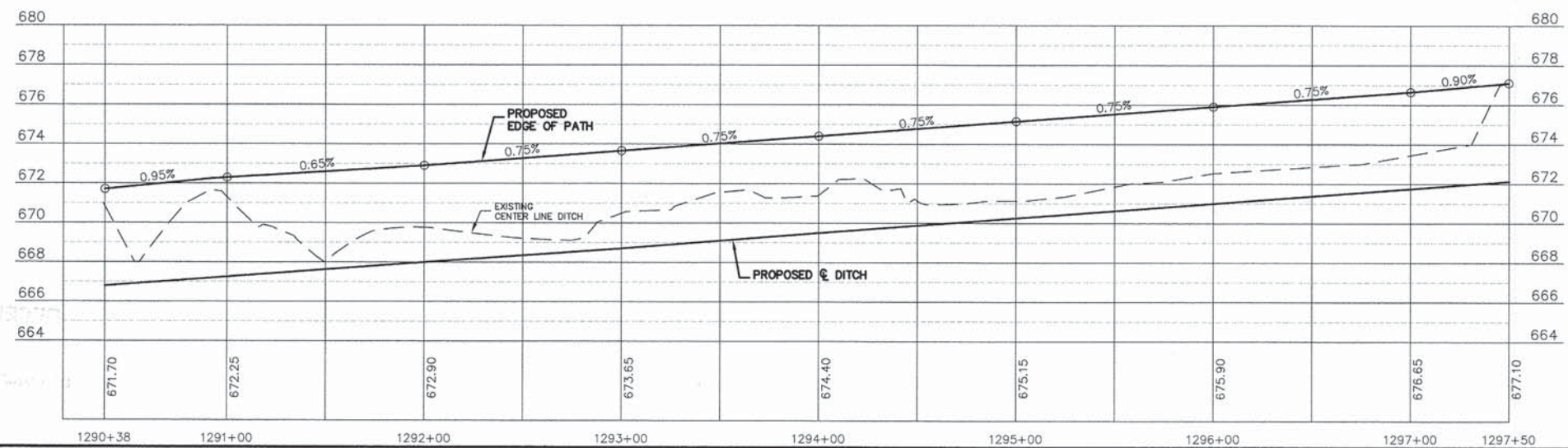
ROUTES	SECTION	COUNTY	TOTAL SHEETS	SHEET NO.
IL ROUTE 50 - F.A.P. 840 ARMOUR ROAD	10-00097-00-BT	KANKAKEE	15	04



EXISTING CONDITIONS



PROPOSED CONDITIONS



M. GINGERICH, GERAUX & ASSOCIATES
 240 N. Industrial Drive
 Bradley, Illinois 60915
 815-939-4921
 FAX : 815-939-9810

REVISIONS		
DATE	BY	DESCRIPTION
06/20/14	JWG/CAG	IDOT REVISIONS
11/12/14	JWG/CAG	IDOT REVISIONS
12/19/14	JWG/CAG	IDOT REVISIONS
01/09/15	JWG/CAG	IDOT REVISIONS

ILLINOIS DEPARTMENT OF TRANSPORTATION
 ITEP - ILLINOIS ROUTE 50 SHARED PATH
 ARMOUR ROAD TO MALL ENTRANCE

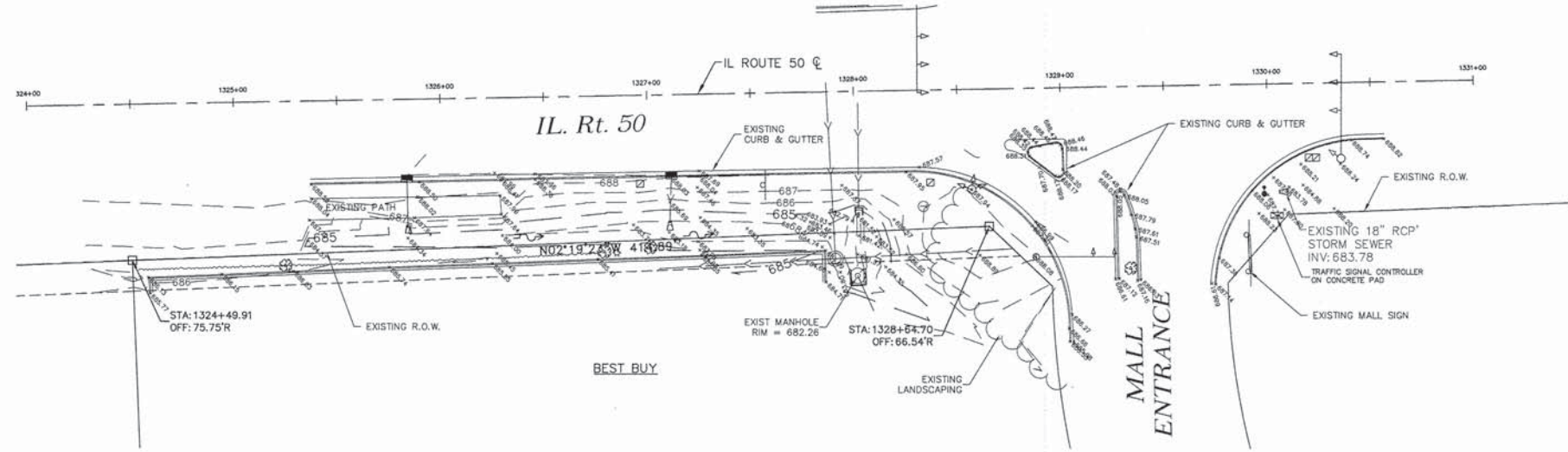
PLAN VIEW

SCALE: 1" = 40'
 DATE: 10/21/11

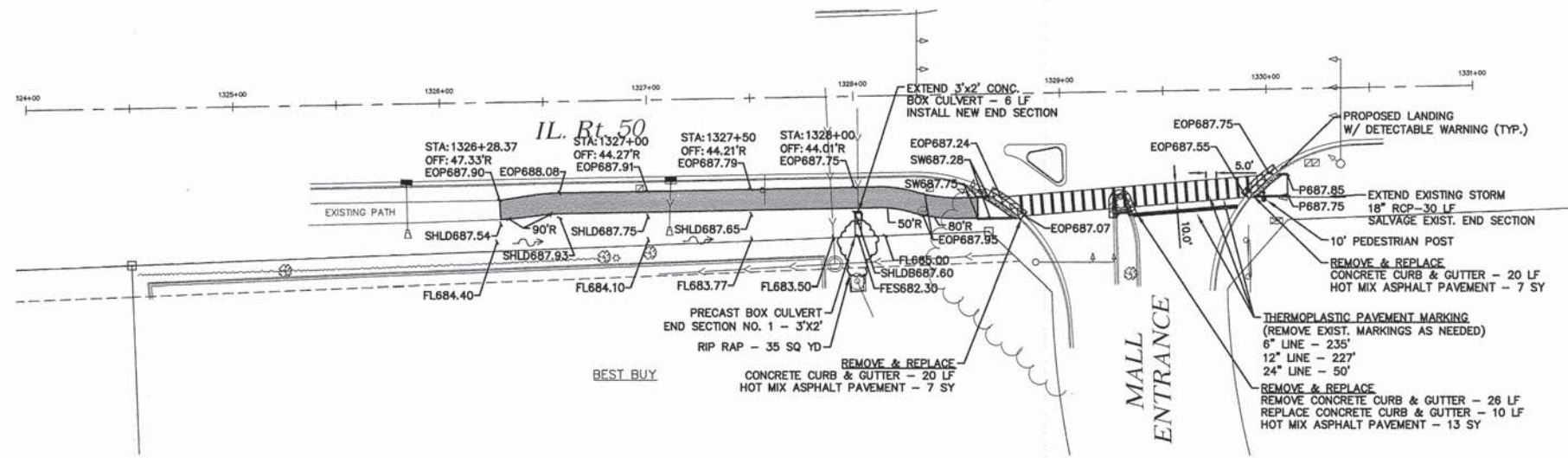
DRAWN BY: JWG
 CHECKED BY:

X:\PROJECTS\10-00097-00-BT\10-00097-00-BT-04-09-PLAN.dwg, SHEET 04, 10/21/11 3:40:00 PM, cgm/afz

ROUTES	SECTION	COUNTY	TOTAL SHEETS	SHEET NO.
IL ROUTE 50 - F.A.P. 840 ARMOUR ROAD	10-00097-00-BT	KANKAKEE	15	05

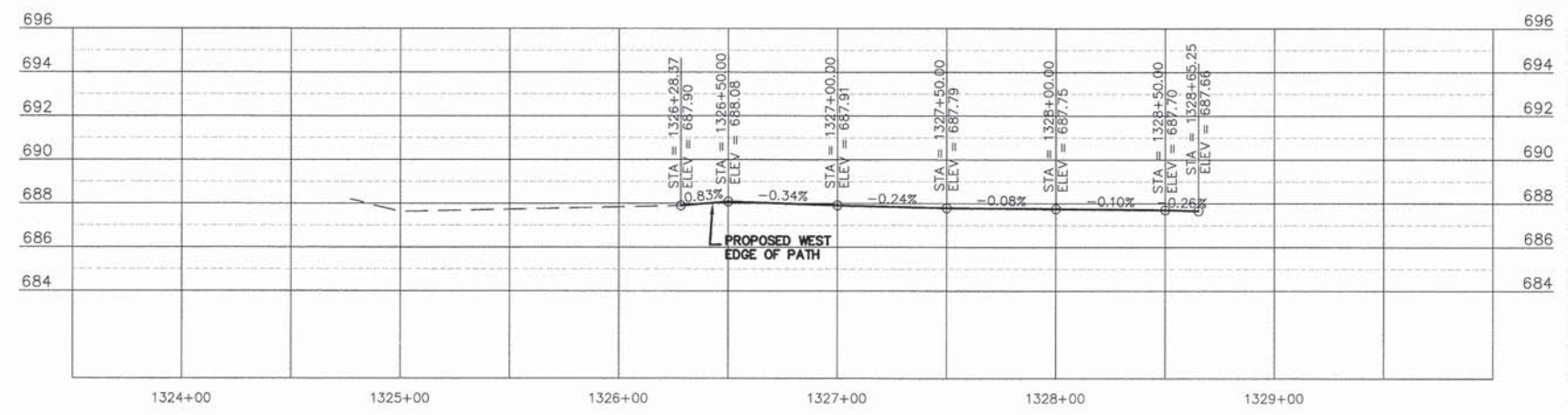
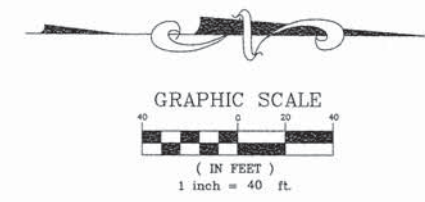


EXISTING CONDITIONS



PROPOSED CONDITIONS

NOTE:
FOR SIGNAL IMPROVEMENTS
SEE SIGNAL PLANS T1-T3



SIZE	START STA.	END STA.	START INV.	END INV.	MINIMUM COVER	DESIGN
3'X2'	STA: 1328+01 OFF: 55.6'R	STA: 1328+01 OFF: 67.6'R	682.35	682.3	1.5	ASTM C 1577

M. GINGERICH, GEREUX & ASSOCIATES
240 N. Industrial Drive
Bradley, Illinois 60915
815-939-4921
FAX: 815-939-9810

DATE	BY	DESCRIPTION
06/20/14	JWG/CAG	IDOT REVISIONS
11/12/14	JWG/CAG	IDOT REVISIONS
12/19/14	JWG/CAG	IDOT REVISIONS
01/09/15	JWG/CAG	IDOT REVISIONS

ILLINOIS DEPARTMENT OF TRANSPORTATION
ITEP -- ILLINOIS ROUTE 50 SHARED PATH
ARMOUR ROAD TO MALL ENTRANCE

PLAN VIEW

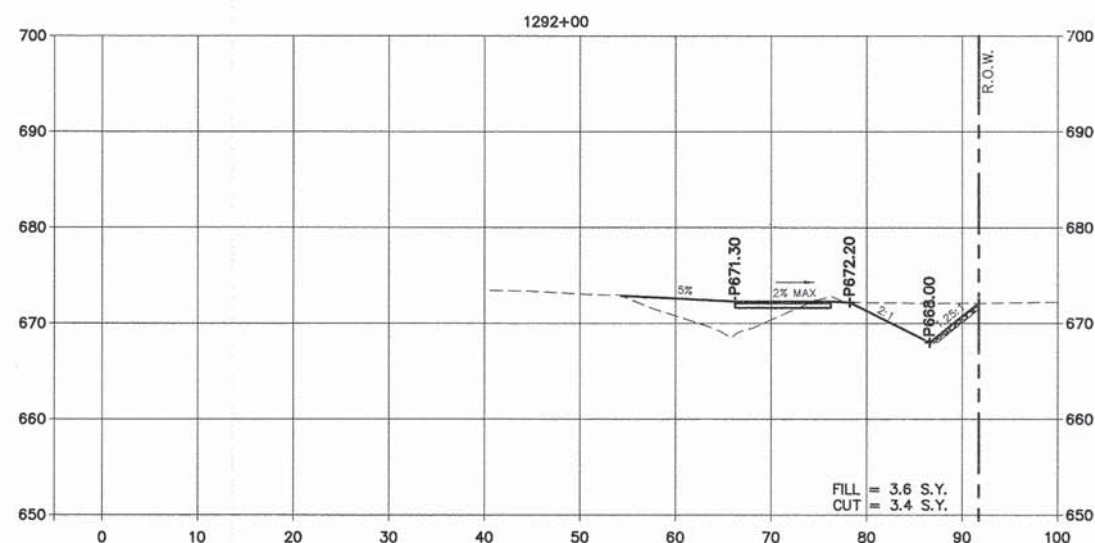
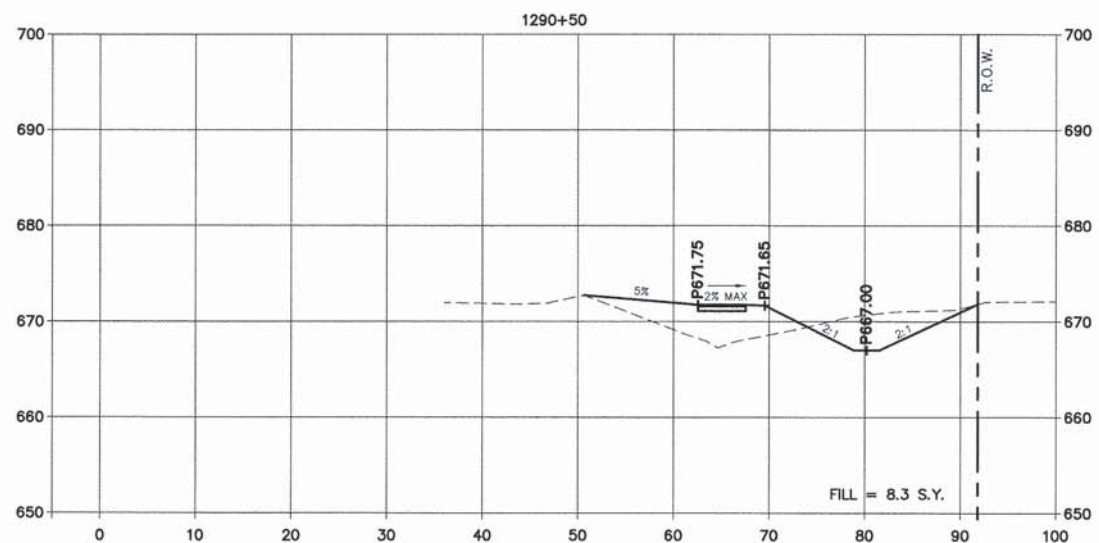
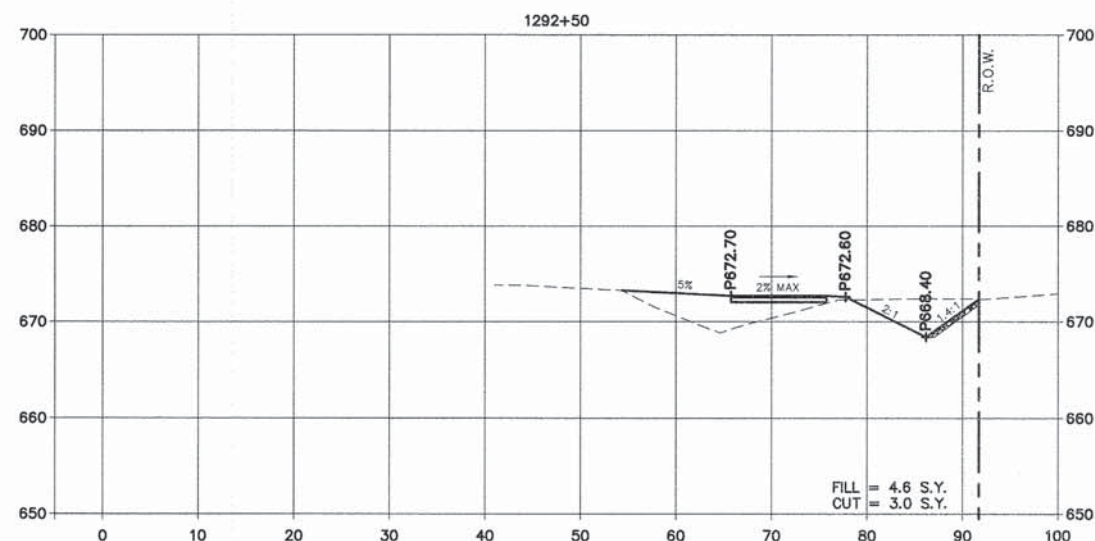
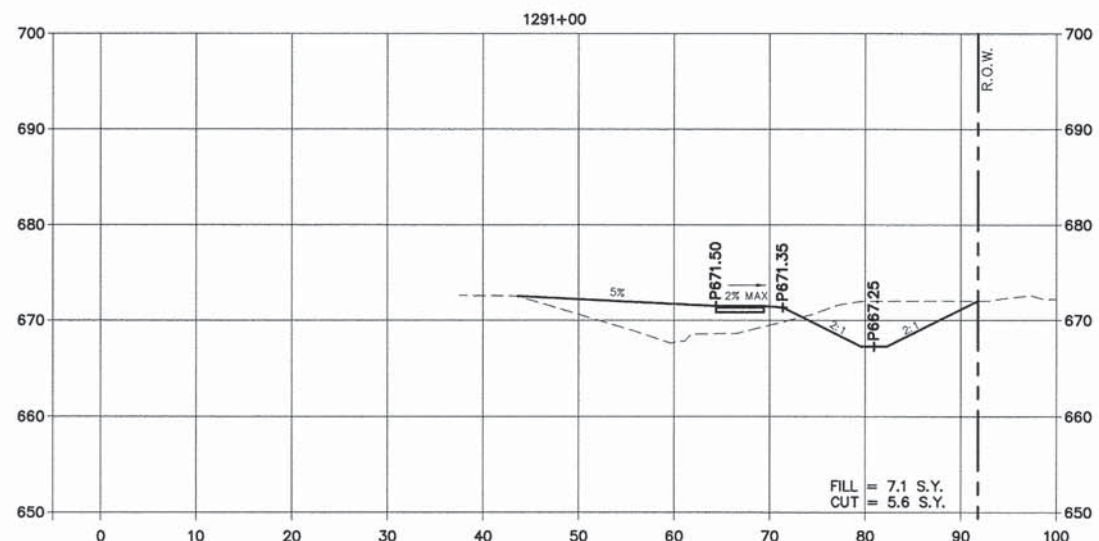
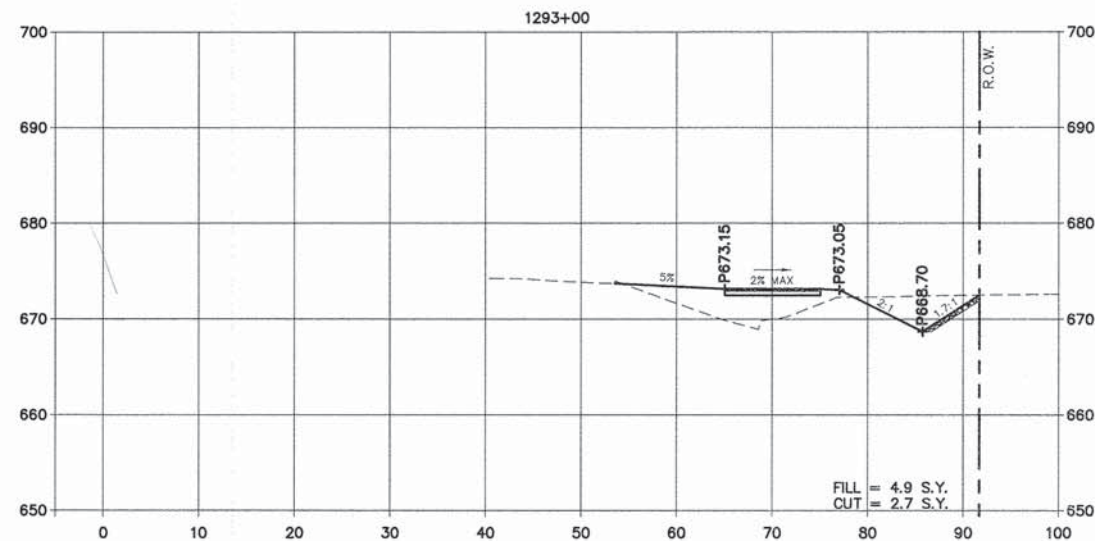
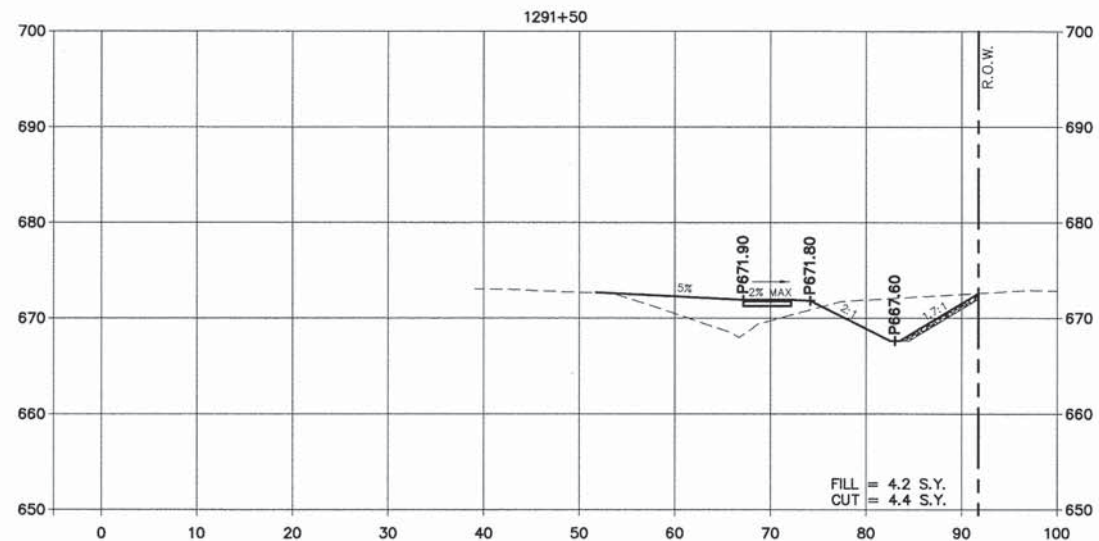
SCALE: 1" = 40'
DATE: 10/21/11

DRAWN BY: JWG
CHECKED BY:

X:\PROJECTS\10-00097-00-BT\10-00097-00-BT-187_Rw_50_Shared_Path\DWG\10-00097-00-BT-SHA-SHEET 04.dwg, SHEET 05, 12/12/2015 3:50:04 PM, cgrahm/z

Rt.50 SOUTH CROSS SECTIONS

ROUTES	SECTION	COUNTY	TOTAL SHEETS	SHEET NO.
IL ROUTE 50 - F.A.P. 840 ARMOUR ROAD	10-00097-00-BT	KANKAKEE	15	06



SCALE
V: 1:10
H: 1:10

M. GINGERICH, GEREUX & ASSOCIATES
240 N. Industrial Drive
Bradley, Illinois 60915
815-939-4921
FAX: 815-939-9810

REVISIONS		
DATE	BY	DESCRIPTION
06/20/14	JWG/CAG	IDOT REVISIONS
11/12/14	JWG/CAG	IDOT REVISIONS
12/19/14	JWG/CAG	IDOT REVISIONS
01/09/15	JWG/CAG	IDOT REVISIONS

ILLINOIS DEPARTMENT OF TRANSPORTATION
ITEP - ILLINOIS ROUTE 50 SHARED PATH
ARMOUR ROAD TO MALL ENTRANCE

CROSS SECTIONS

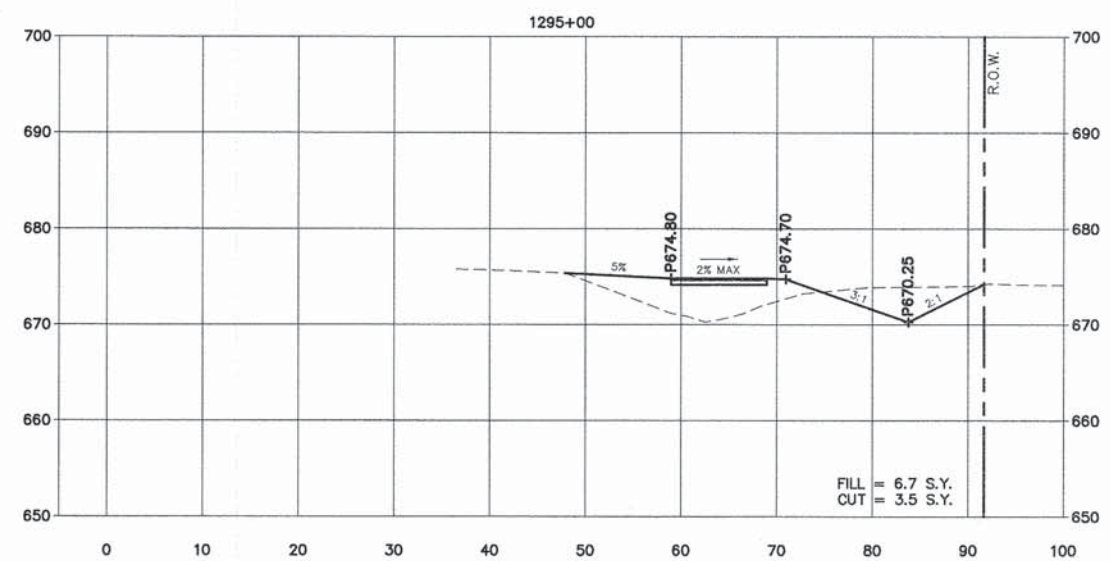
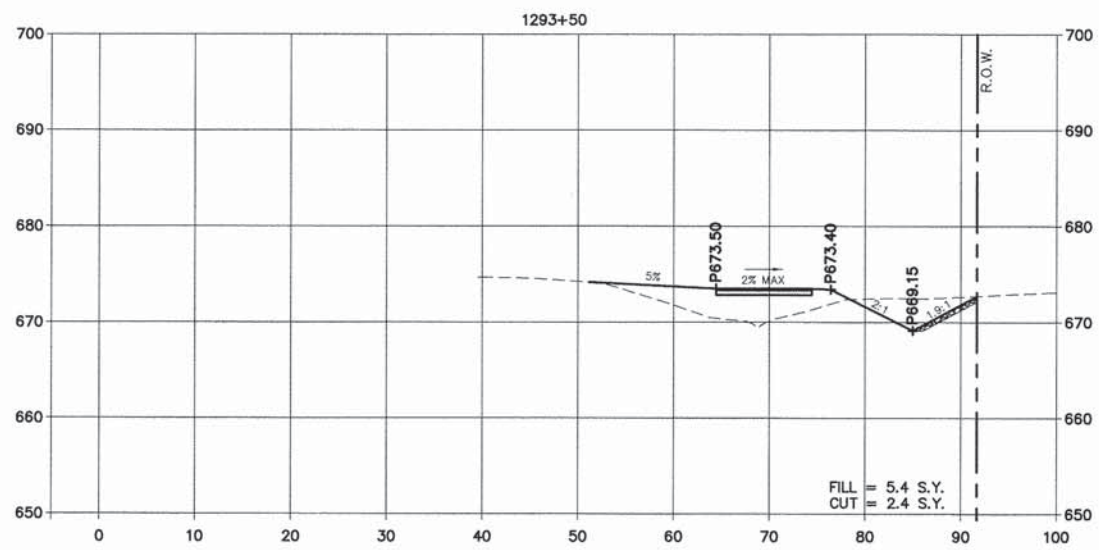
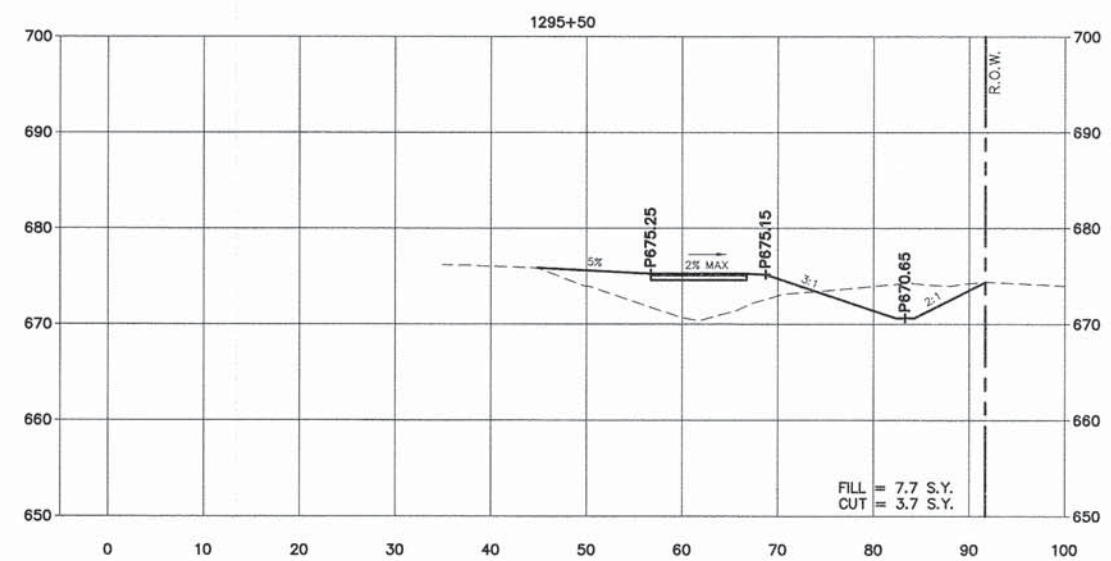
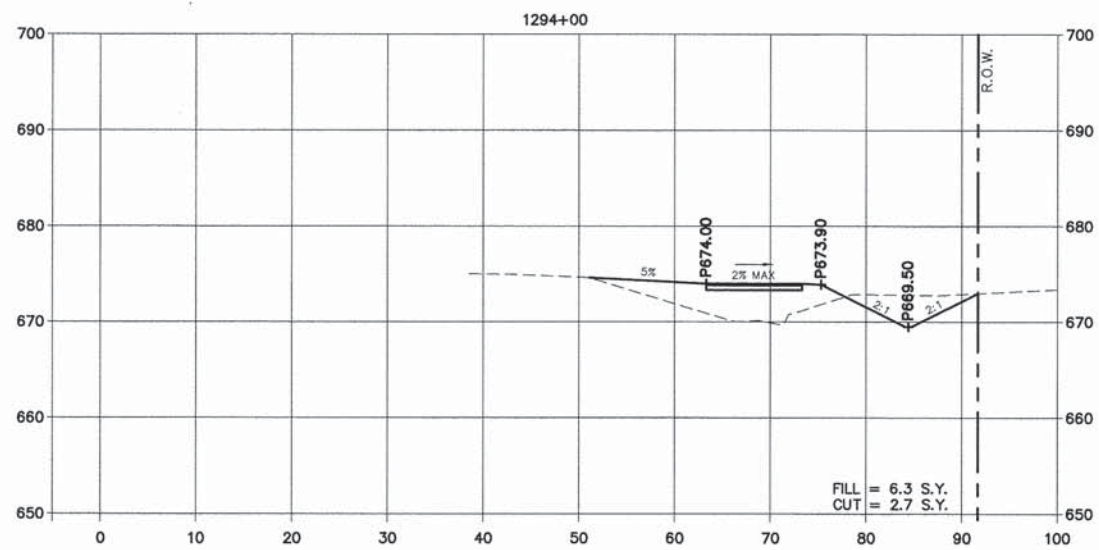
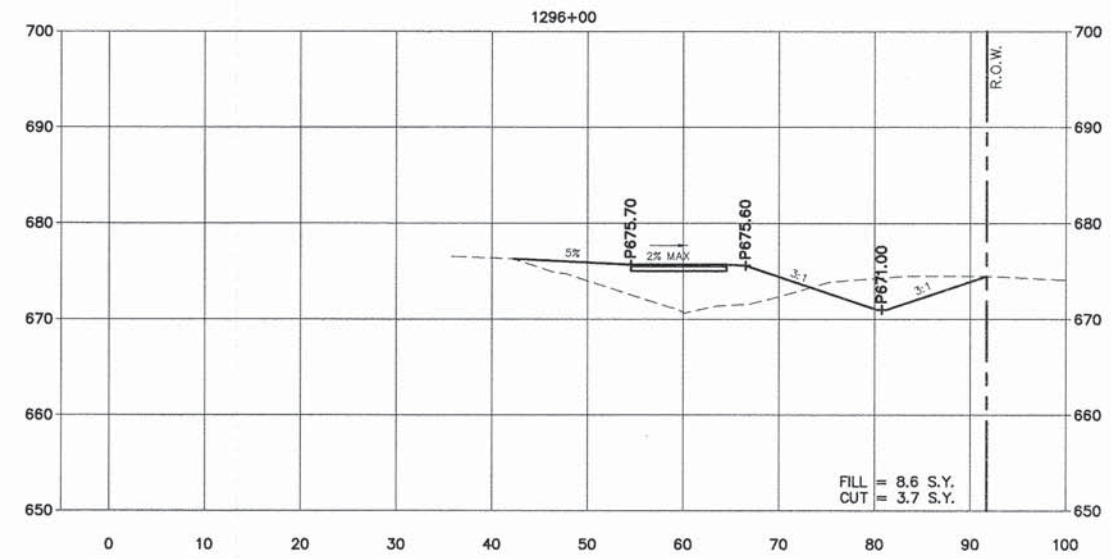
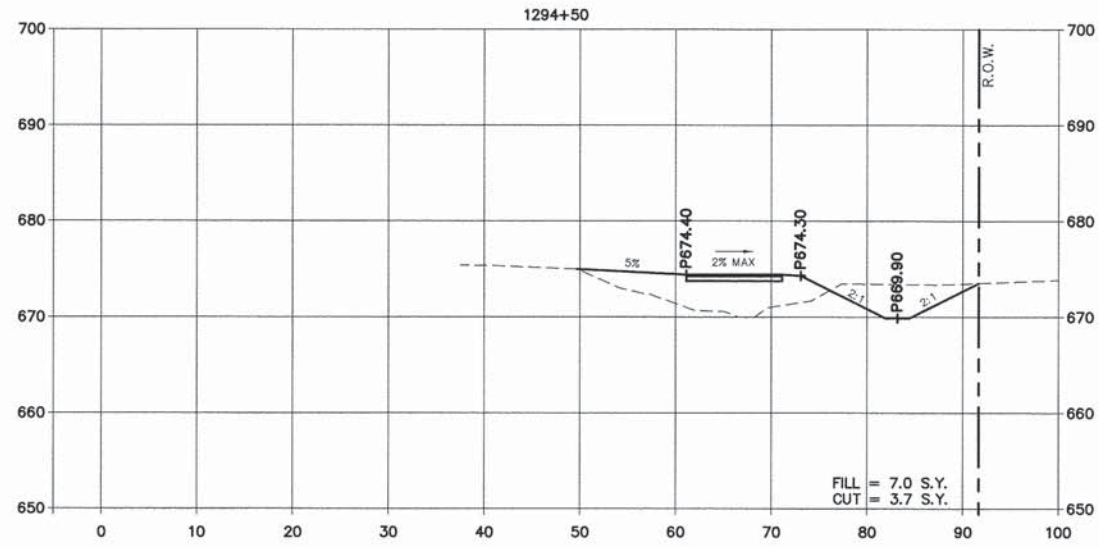
SCALE: 1" = 10'
DATE: 10/21/11

DRAWN BY: JWG
CHECKED BY:

X:\PROJECTS\M-Sub\102-BRADLEY\187-Rte 50 Shared Path\DWGS-Shop\102-Sheet 06.dwg, SHEET 06, 10/21/2015 3:40:11 PM, cgriffin

Rt.50 SOUTH CROSS SECTIONS

ROUTES	SECTION	COUNTY	TOTAL SHEETS	SHEET NO.
IL ROUTE 50 - F.A.P. 840 ARMOUR ROAD	10-00097-00-BT	KANKAKEE	15	07



SCALE
V: 1:10
H: 1:10



REVISIONS		
DATE	BY	DESCRIPTION
06/20/14	JWG/CAG	IDOT REVISIONS
11/12/14	JWG/CAG	IDOT REVISIONS
12/19/14	JWG/CAG	IDOT REVISIONS
01/09/15	JWG/CAG	IDOT REVISIONS

ILLINOIS DEPARTMENT OF TRANSPORTATION
ITEP - ILLINOIS ROUTE 50 SHARED PATH
ARMOUR ROAD TO MALL ENTRANCE

CROSS SECTIONS

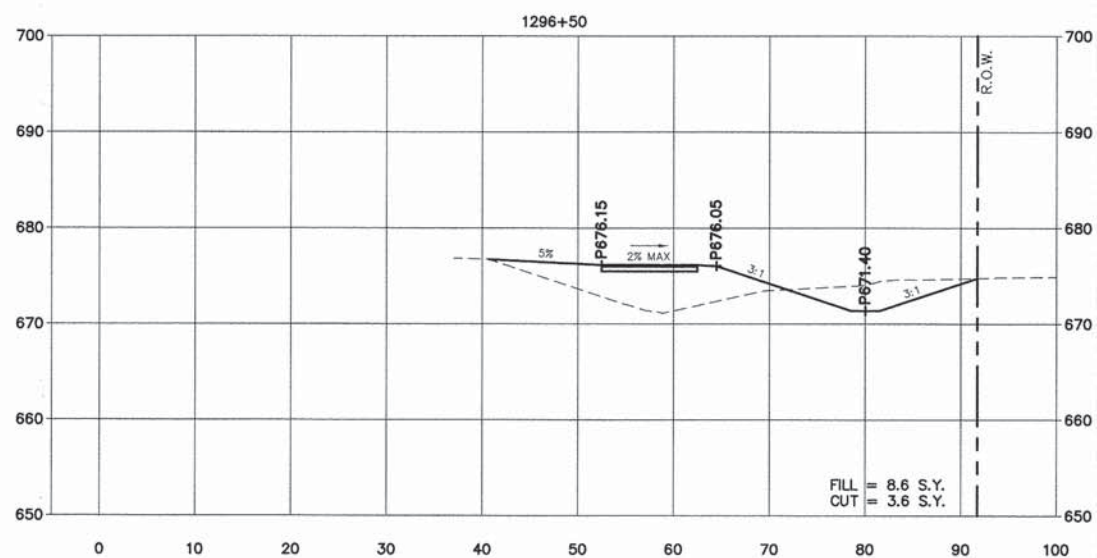
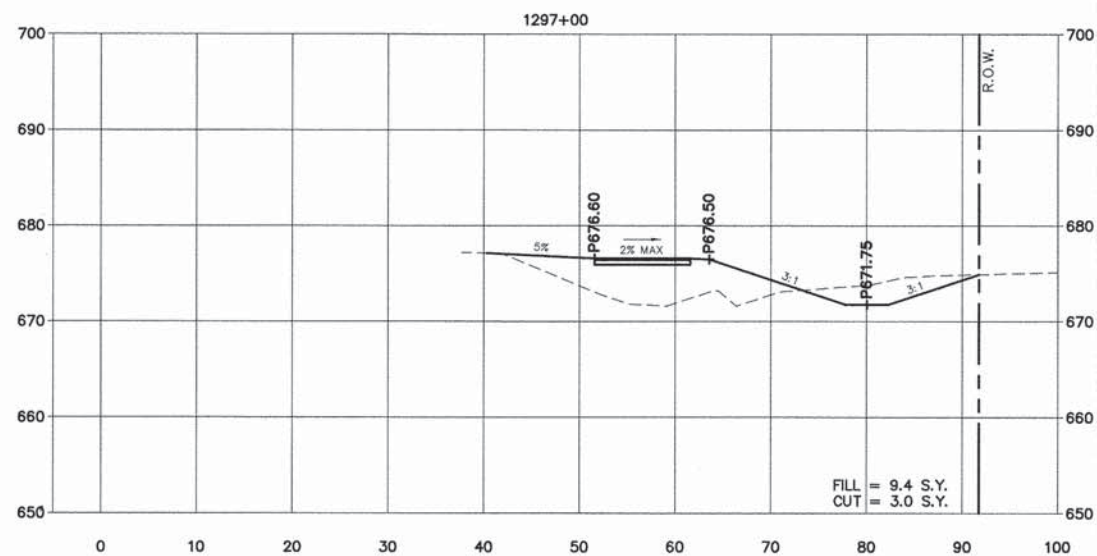
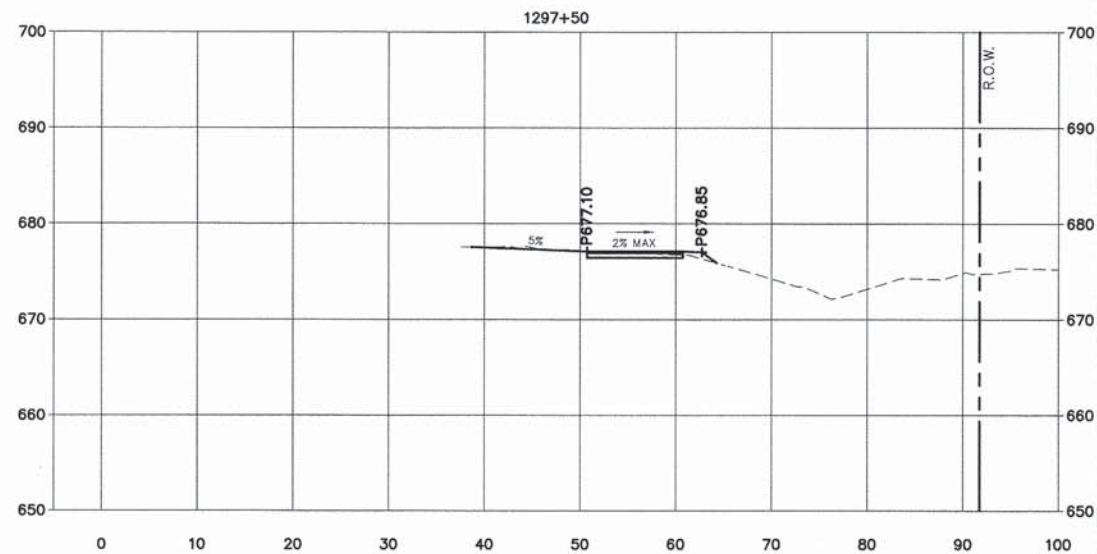
SCALE: 1" = 10'
DATE: 10/21/11

DRAWN BY: JWG
CHECKED BY:

X:\PROJECTS\11-UBA\02-BRADLEY\127-Rte 50 Shared Path\DWG\Sta\SHSHEET 04-09-PLAN.dwg, SHEET 07, 1/21/2016 3:40:22 PM, cpatel@idot.gov

Rt.50 SOUTH CROSS SECTIONS

ROUTES	SECTION	COUNTY	TOTAL SHEETS	SHEET NO.
IL ROUTE 50 - F.A.P. 840 ARMOUR ROAD	10-00097-00-BT	KANKAKEE	15	08



SCALE
V: 1:10
H: 1:10

M²
M. GINGERICH, GEREUX
ASSOCIATES

240 N. Industrial Drive
Bradley, Illinois 60915
815-939-4921
FAX: 815-939-9810

REVISIONS		
DATE	BY	DESCRIPTION
06/20/14	JWG/CAG	IDOT REVISIONS
11/12/14	JWG/CAG	IDOT REVISIONS
12/19/14	JWG/CAG	IDOT REVISIONS
01/09/15	JWG/CAG	IDOT REVISIONS

ILLINOIS DEPARTMENT OF TRANSPORTATION
ITEP - ILLINOIS ROUTE 50 SHARED PATH
ARMOUR ROAD TO MALL ENTRANCE

CROSS SECTIONS

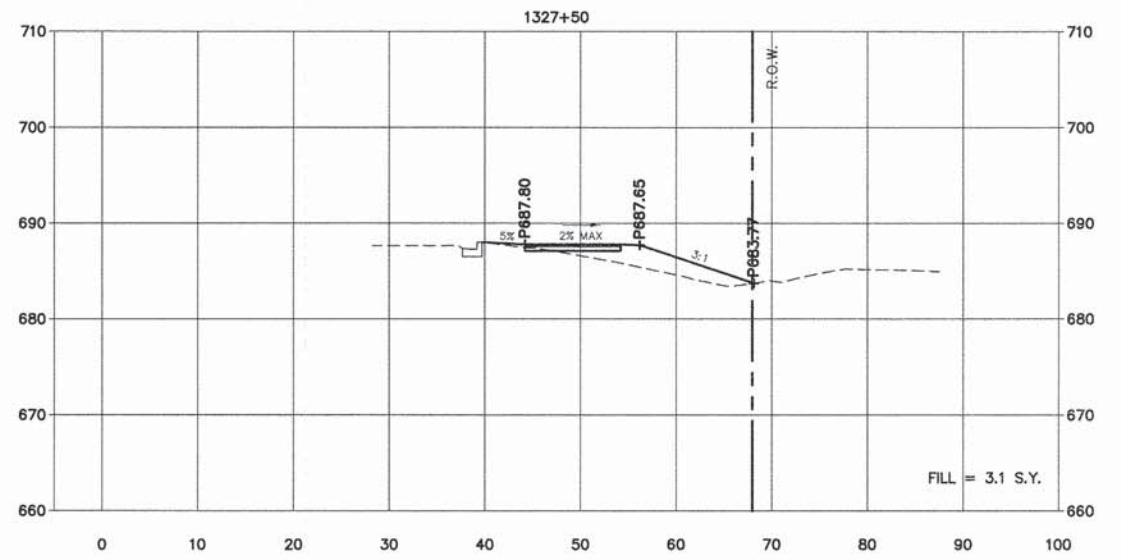
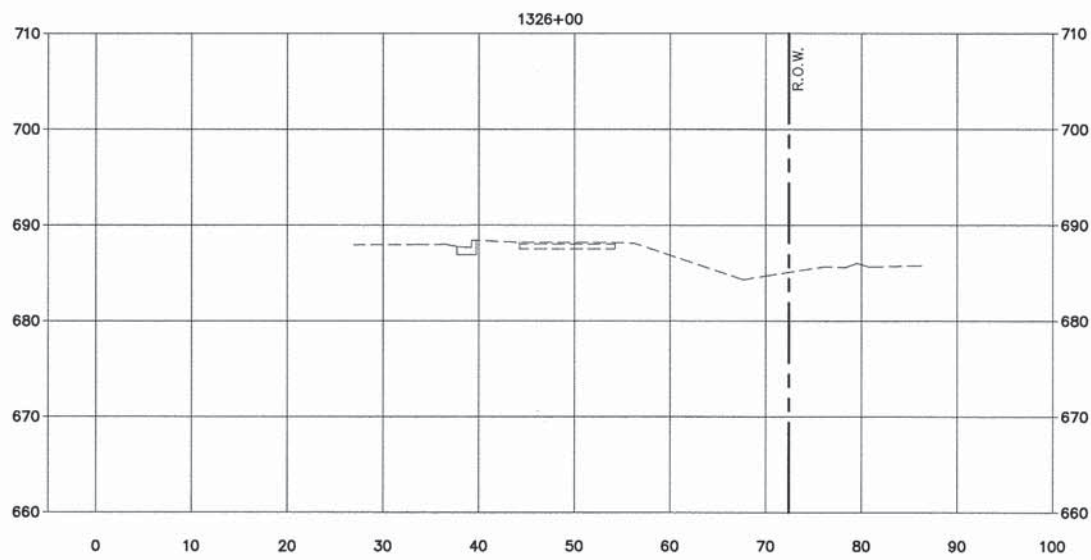
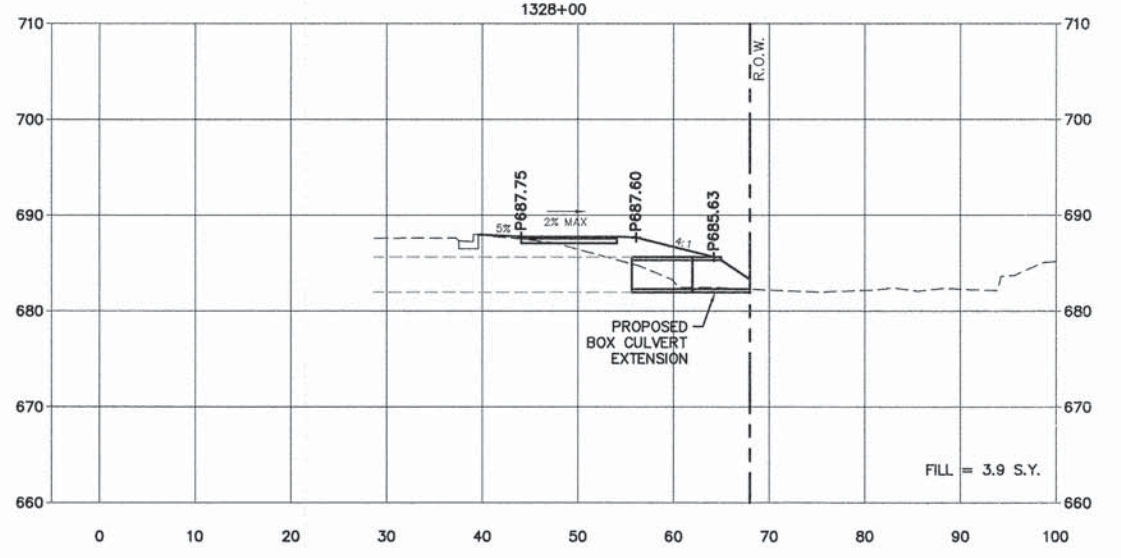
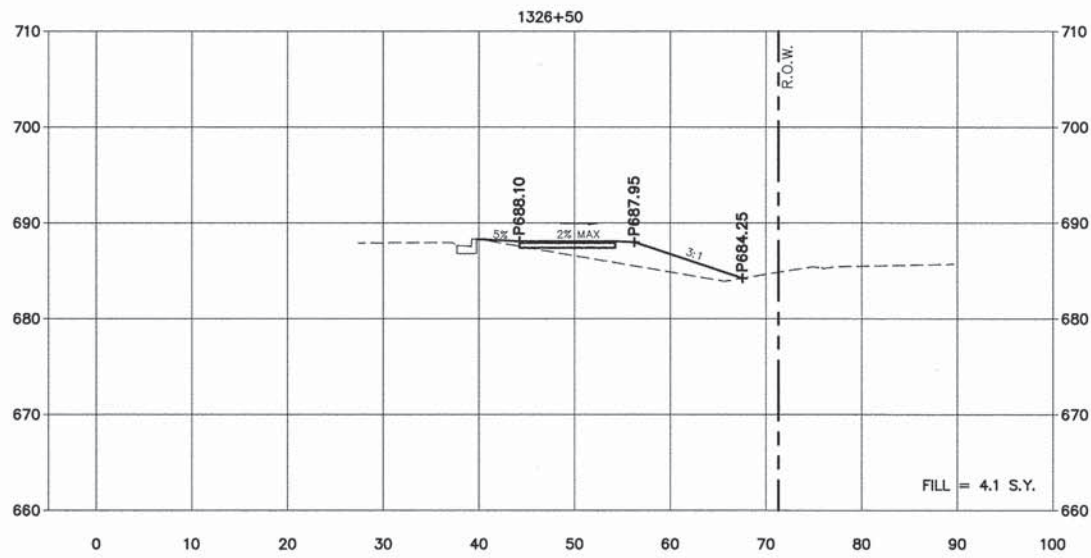
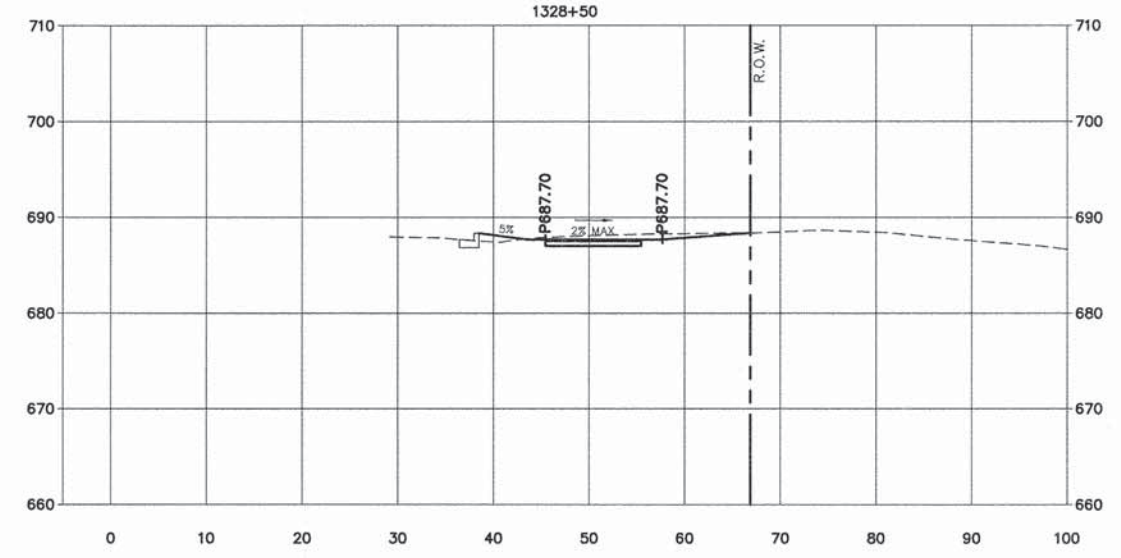
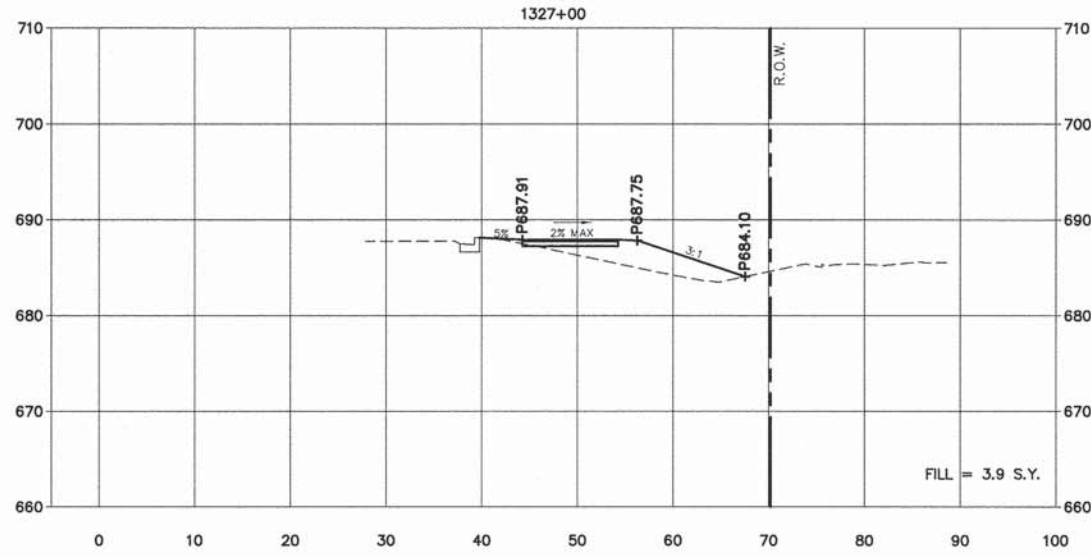
SCALE: 1" = 10'
DATE: 10/21/11

DRAWN BY: JWG
CHECKED BY:

X:\PROJECTS\M-2008\BRADLEY\187_Rte_50_Shared_Path\DWG\8-SHA\SHEET 04-09-PLAN.dwg, SHEET08, 12/1/2015, 3:40:29 PM, cgrainfz

Rt.50 NORTH CROSS SECTIONS

ROUTES	SECTION	COUNTY	TOTAL SHEETS	SHEET NO.
IL ROUTE 50 - F.A.P. 840 ARMOUR ROAD	10-00097-00-BT	KANKAKEE	15	09



SCALE
V: 1:10
H: 1:10



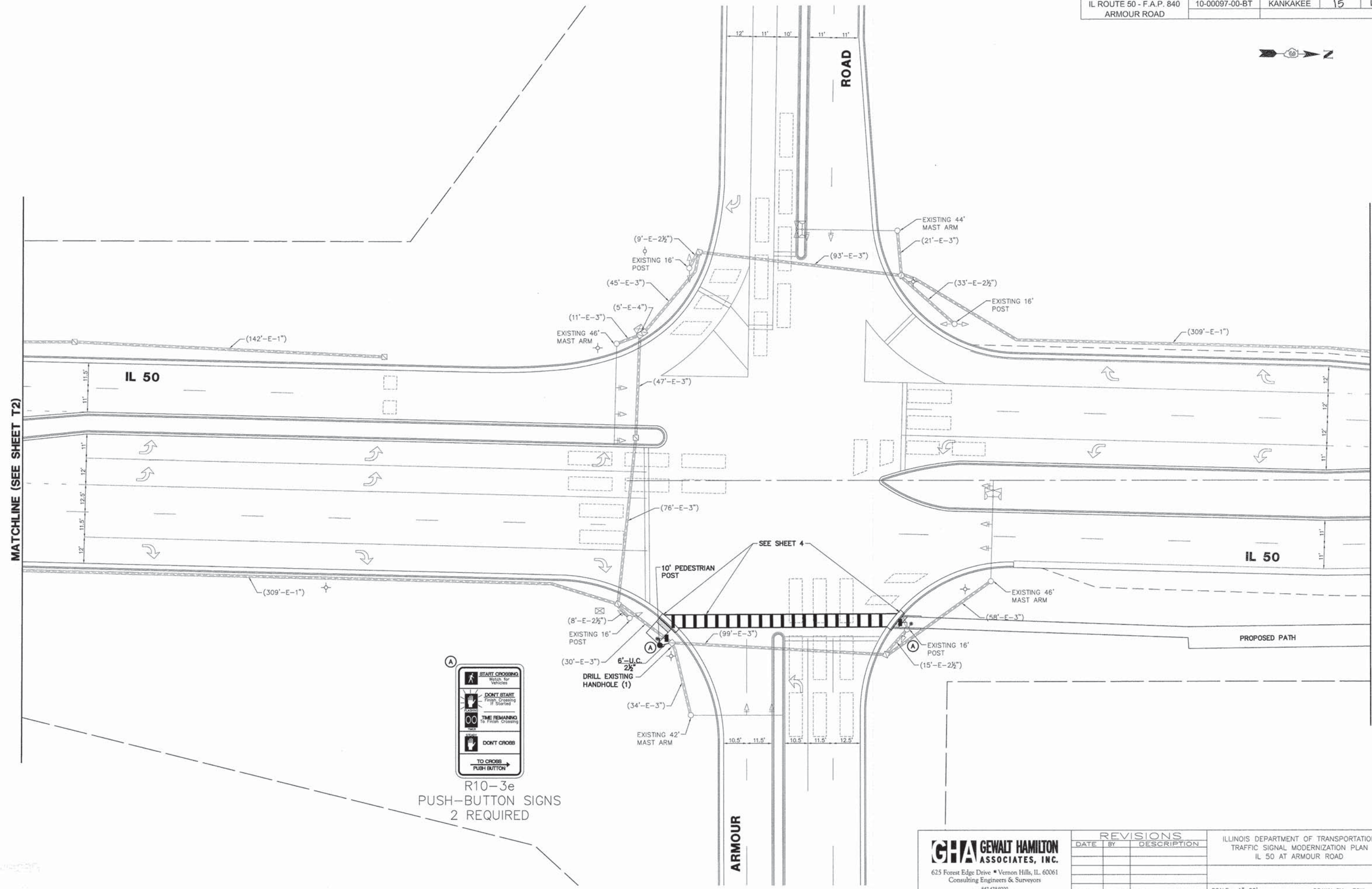
REVISIONS		
DATE	BY	DESCRIPTION
06/20/14	JWG/CAG	IDOT REVISIONS
11/12/14	JWG/CAG	IDOT REVISIONS
12/19/14	JWG/CAG	IDOT REVISIONS
01/09/15	JWG/CAG	IDOT REVISIONS

ILLINOIS DEPARTMENT OF TRANSPORTATION
ITEP - ILLINOIS ROUTE 50 SHARED PATH
ARMOUR ROAD TO MALL ENTRANCE

CROSS SECTIONS
SCALE: 1" = 10'
DATE: 10/21/11
DRAWN BY: JWG
CHECKED BY:

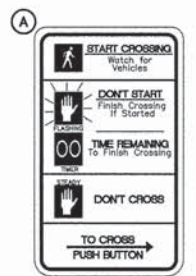
X:\PROJECTS\10-00097-00-BT\10-00097-00-BT_Sht50-Plan.dwg, SHEET 09, 10/21/11 3:40:34 PM, cgraher

ROUTES	SECTION	COUNTY	TOTAL SHEETS	SHEET NO.
IL ROUTE 50 - F.A.P. 840 ARMOUR ROAD	10-00097-00-BT	KANKAKEE	15	10



MATCHLINE (SEE SHEET T2)

MATCHLINE (SEE SHEET T2)



R10-3e
PUSH-BUTTON SIGNS
2 REQUIRED

GHA GEWALT HAMILTON ASSOCIATES, INC.
 625 Forest Edge Drive • Vernon Hills, IL 60061
 Consulting Engineers & Surveyors
 847-478-9700
 FAX: 847-478-9701

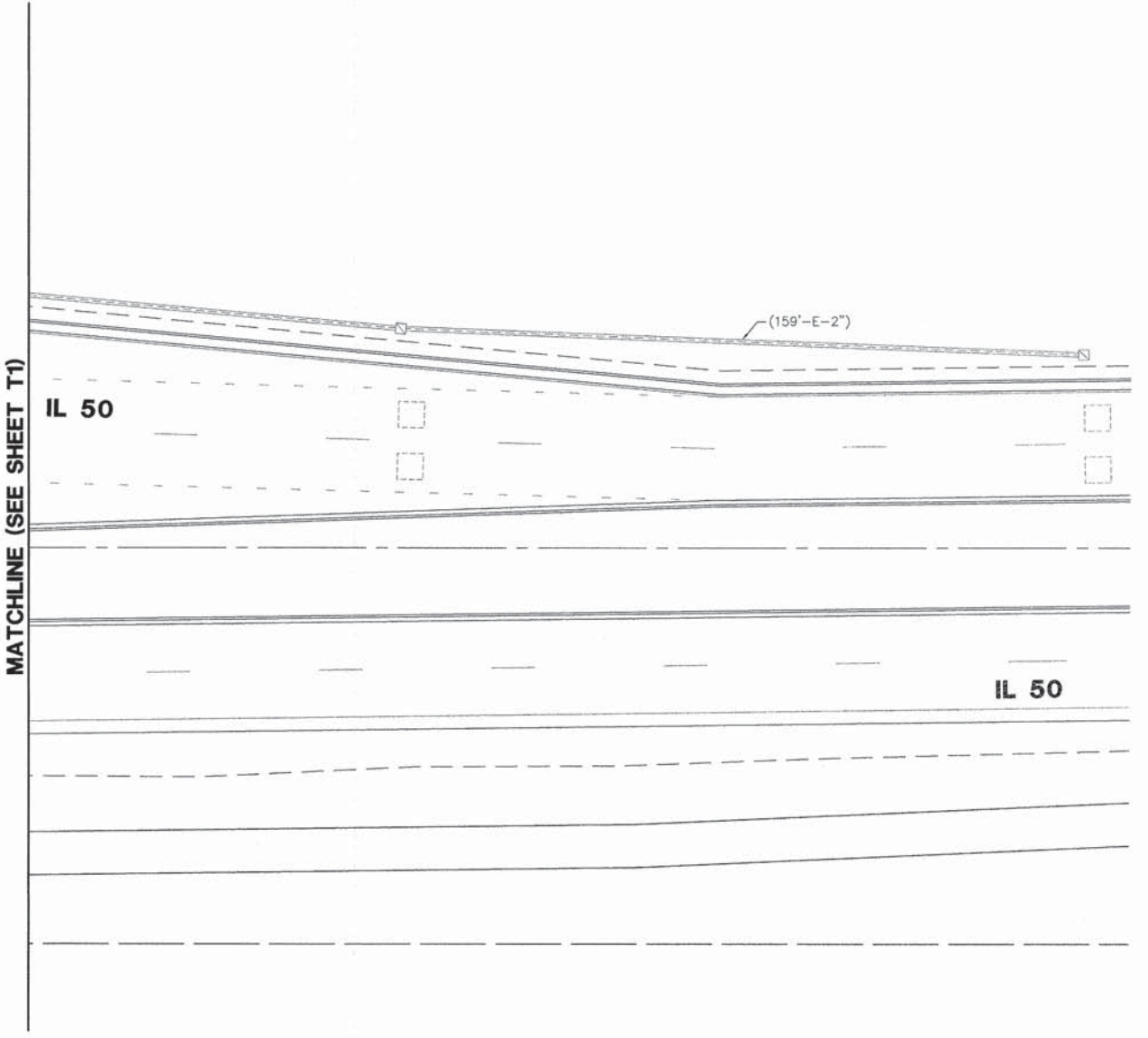
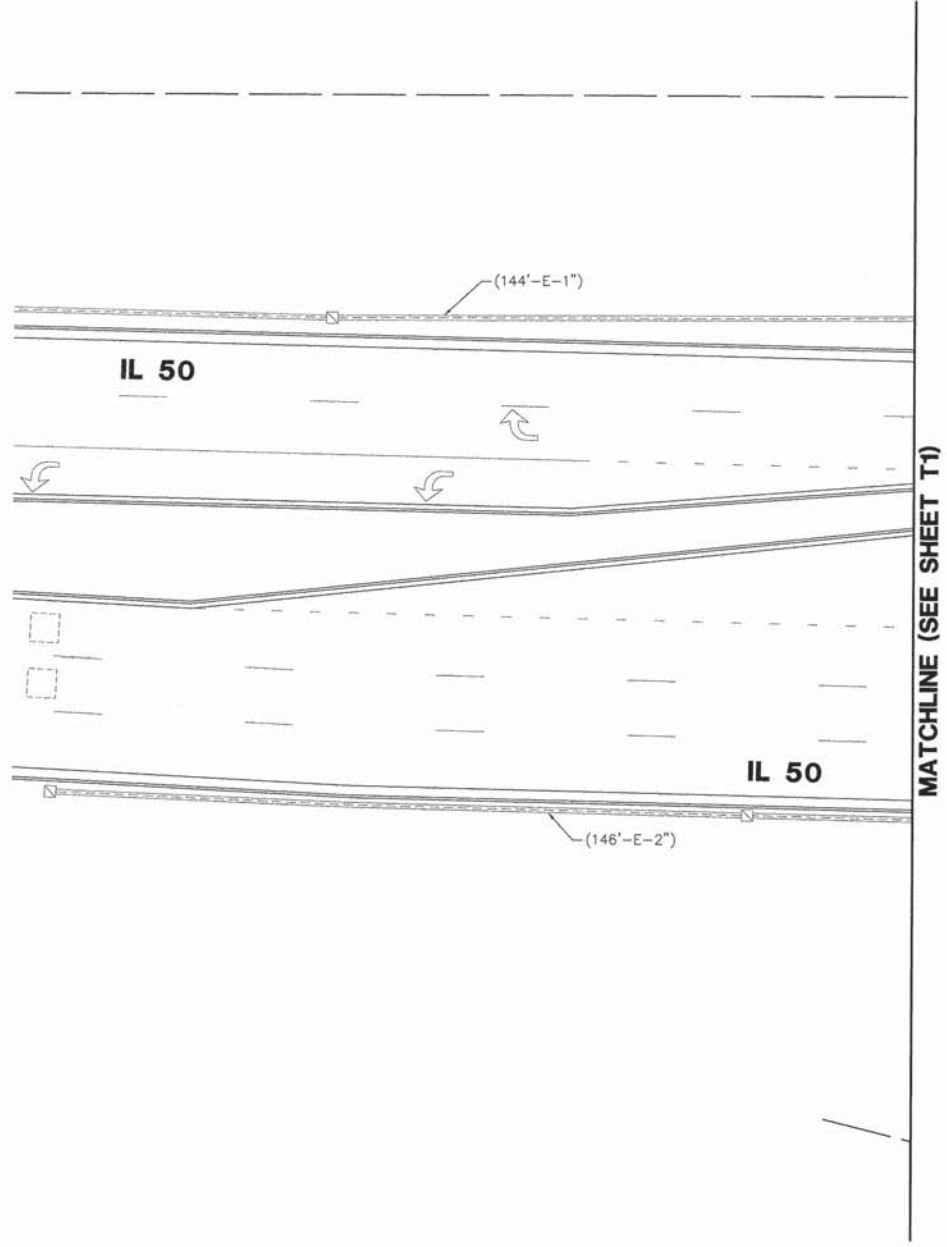
REVISIONS		
DATE	BY	DESCRIPTION

ILLINOIS DEPARTMENT OF TRANSPORTATION
 TRAFFIC SIGNAL MODERNIZATION PLAN
 IL 50 AT ARMOUR ROAD

SCALE: 1"=20'
 DATE: _____

DRAWN BY: ZCW
 CHECKED BY: DPB

ROUTES	SECTION	COUNTY	TOTAL SHEETS	SHEET NO.
IL ROUTE 50 - F.A.P. 840 ARMOUR ROAD	10-00097-00-BT	KANKAKEE	15	11



10/13/17
 10/13/17
 10/13/17

GHA GEWALT HAMILTON ASSOCIATES, INC.
 625 Forest Edge Drive • Vernon Hills, IL 60061
 Consulting Engineers & Surveyors
 847-478-9700
 FAX: 847-478-9701

REVISIONS		
DATE	BY	DESCRIPTION

ILLINOIS DEPARTMENT OF TRANSPORTATION
 TRAFFIC SIGNAL MODERNIZATION PLAN
 IL 50 AT ARMOUR ROAD

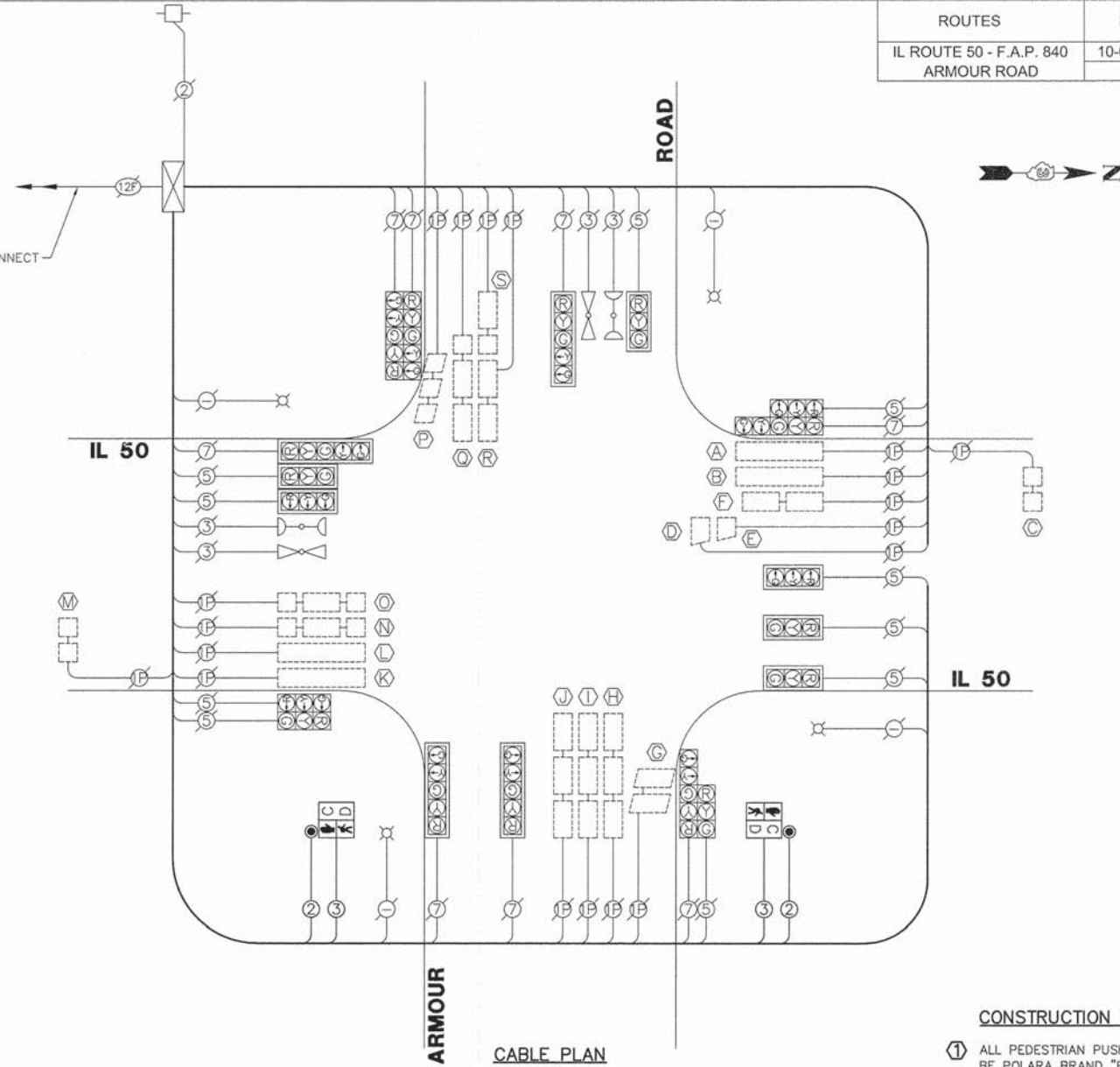
SCALE: 1"=20'
 DATE: _____ DRAWN BY: ZCW
 CHECKED BY: DPB

SCHEDULE OF QUANTITIES
IL 50 AT ARMOUR ROAD

NO.	QUANT.	UNIT	DESCRIPTION
1.	6	FOOT	UNDERGROUND CONDUIT, PVC, 2 1/2" DIA.
2.	1	EACH	MAINTENANCE OF EXISTING TRAFFIC SIGNAL INSTALLATION
3.	538	FOOT	ELECTRIC CABLE IN CONDUIT, SIGNAL NO. 14 2C
4.	550	FOOT	ELECTRIC CABLE IN CONDUIT, SIGNAL NO. 14 3C
5.	1	EACH	TRAFFIC SIGNAL POST, GALVANIZED STEEL 10 FT.
6.	4	FOOT	CONCRETE FOUNDATION, TYPE A
7.	1	EACH	DRILL EXISTING HANDHOLE
8.	2	EACH	PEDESTRIAN SIGNAL HEAD, LED, 1-FACE, BRACKET MOUNTED WITH COUNTDOWN TIMER
9.	1	EACH	MODIFY EXISTING CONTROLLER
10.	2	EACH	PEDESTRIAN PUSH-BUTTON, SPECIAL

ROUTES	SECTION	COUNTY	TOTAL SHEETS	SHEET NO.
IL ROUTE 50 - F.A.P. 840 ARMOUR ROAD	10-00097-00-BT	KANKAKEE	15	12

EXISTING INTERCONNECT TO WAL-MART



CABLE PLAN

CONSTRUCTION NOTES:

- 1 ALL PEDESTRIAN PUSHBUTTONS SHALL BE POLARA BRAND "BDL3 BULLDOG III VANDAL RESISTANT ADA PUSHBUTTON"

DETECTOR LOOP INDUCTANCE CHART

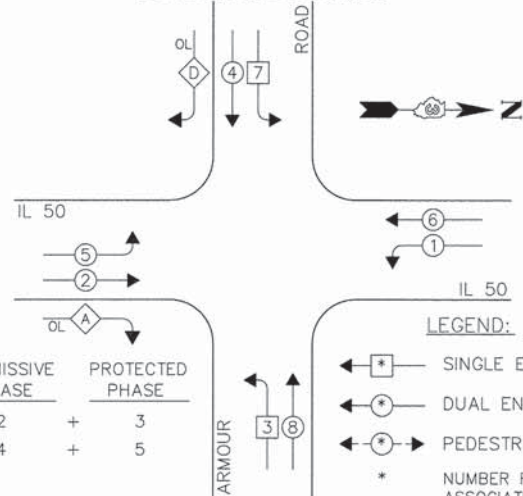
LOOP SYSTEM	LABEL	NUMBER OF TURNS	INDUCTANCE (mH)	FREQUENCY (Hz)	J PIN STATUS
A	SB STBR RL	4	302	35116	OFF
B	SB STBR LL	4	305	34987	OFF
C	SB FAR	6	650	23946	ON
D	SB LT FR	5	321	34090	ON
E	SB LT MID	5	256	38165	ON
F	SB LT BK	4	483	27762	ON
G	WB RT	4	604	24841	OFF
H	WB LT	4	856	20858	ON
I	WB LL	4	864	20770	ON
J	WB LT	4	871	20683	ON
K	NB STBR RL	4	298	35357	OFF
L	NB STBR LL	4	301	35188	OFF
M	NB FAR	6	643	24073	ON
N	NB LT RL	4	809	21461	ON
O	NB LT LL	4	802	21550	ON
P	EB RT	4	667	23639	OFF
Q	EB	4	668	23621	ON
R	EB LT FR	4	823	21271	ON
S	EB LT BK	4	284	36203	ON

J PIN STATUS:
"ON" MEANS STANDARD DETECTOR SETUP.
"OFF" MEAN THE J WIRE HAS BEEN DISCONNECTED,
BUT INTERACT AT THE HARNESS PANEL WITH THE NECESSARY
SPARE CONNECTOR ATTACHED, MARKED AND INSULATED.

ELECTRICAL LOAD CHART

IL RTE 50			
SIGNAL SECTION	NUMBER	WATTAGE EACH	BURN TIME %
RED	10	17	26
YELLOW	10	25	5
GREEN	10	15	75
YELLOW ARROW	3	12	5
GREEN ARROW	3	12	5
ARMOUR ROAD			
SIGNAL SECTION	NUMBER	WATTAGE EACH	BURN TIME %
RED	8	17	20
YELLOW	8	25	5
GREEN	8	15	75
YELLOW ARROW	6	12	5
GREEN ARROW	6	12	5
PEDESTRIAN SIG.	2	25	100
TRAFFIC SIGNAL CABINET			
ITEM	NUMBER	WATTAGE EACH	BURN TIME %
CONTROLLER	1	100	100
LOOP DETECTORS	39	4	100
ITEM	NUMBER	WATTAGE EACH	BURN TIME %
LUMINAIRE	4	250	342 HRS/MO

EXISTING CONTROLLER SEQUENCE

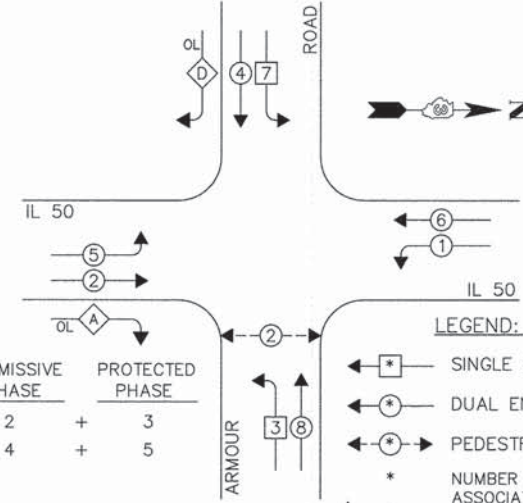


OVERLAP LETTER	PERMISSIVE PHASE	PROTECTED PHASE
A	= 2 +	3
D	= 4 +	5

- LEGEND:**
- ◀ [A] ▶ SINGLE ENTRY PHASE
 - ◀ [D] ▶ DUAL ENTRY PHASE
 - ◀ [P] ▶ PEDESTRIAN PHASE
 - * NUMBER REFERS TO ASSOCIATED PHASE
 - ◀ [OL] ▶ OVERLAP

EXISTING & PROPOSED PHASE DESIGNATION DIAGRAM

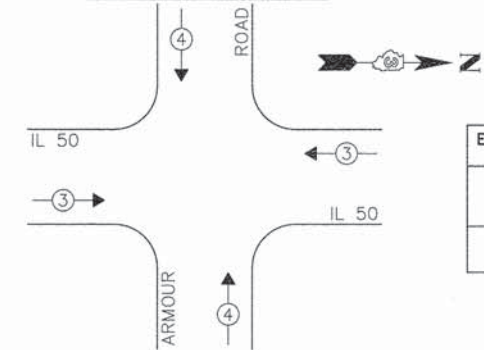
PROPOSED CONTROLLER SEQUENCE



OVERLAP LETTER	PERMISSIVE PHASE	PROTECTED PHASE
A	= 2 +	3
D	= 4 +	5

- LEGEND:**
- ◀ [A] ▶ SINGLE ENTRY PHASE
 - ◀ [D] ▶ DUAL ENTRY PHASE
 - ◀ [P] ▶ PEDESTRIAN PHASE
 - * NUMBER REFERS TO ASSOCIATED PHASE
 - ◀ [OL] ▶ OVERLAP

EXISTING & PROPOSED EMERGENCY VEHICLE PREEMPTION SEQUENCE



EXIST. & PROP. EMERGENCY VEHICLE PREEMPTORS		
EMERGENCY VEHICLE PREEMPTOR	3	4
MOVEMENT	—	

GHA #4140.850

GHA GEWALT HAMILTON ASSOCIATES, INC.

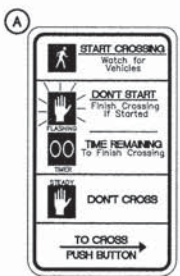
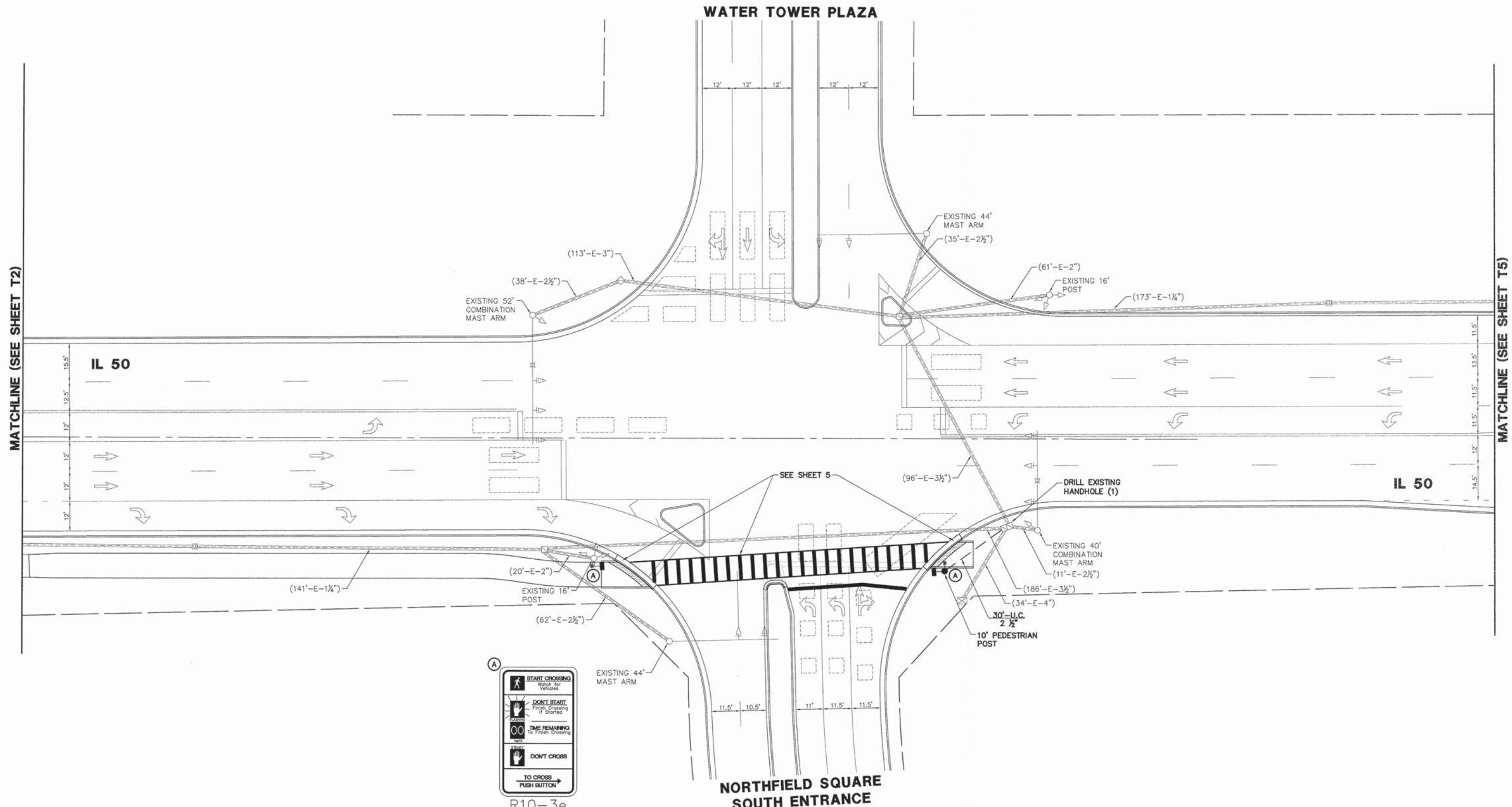
625 Forest Edge Drive • Vernon Hills, IL 60061
Consulting Engineers & Surveyors
847-478-9700
FAX: 847-478-9701

REVISIONS		
DATE	BY	DESCRIPTION

SCHEDULE OF QUANTITIES, CABLE PLAN, PHASE DESIGNATION DIAGRAM, & EMERGENCY VEHICLE PREEMPTION SEQUENCE
IL 50 AT ARMOUR ROAD

SCALE: NONE
DATE: DRAWN BY: ZCW
CHECKED BY: DPB

ROUTES	SECTION	COUNTY	TOTAL SHEETS	SHEET NO.
IL ROUTE 50 - F.A.P. 840 ARMOUR ROAD	10-00097-00-BT	KANKAKEE	15	13



R10-3e
PUSH-BUTTON SIGNS
2 REQUIRED

GHA GEWALT HAMILTON ASSOCIATES, INC.
625 Forest Edge Drive • Vernon Hills, IL 60061
Consulting Engineers & Surveyors
847-478-9700
FAX: 847-478-9701

REVISIONS		
DATE	BY	DESCRIPTION

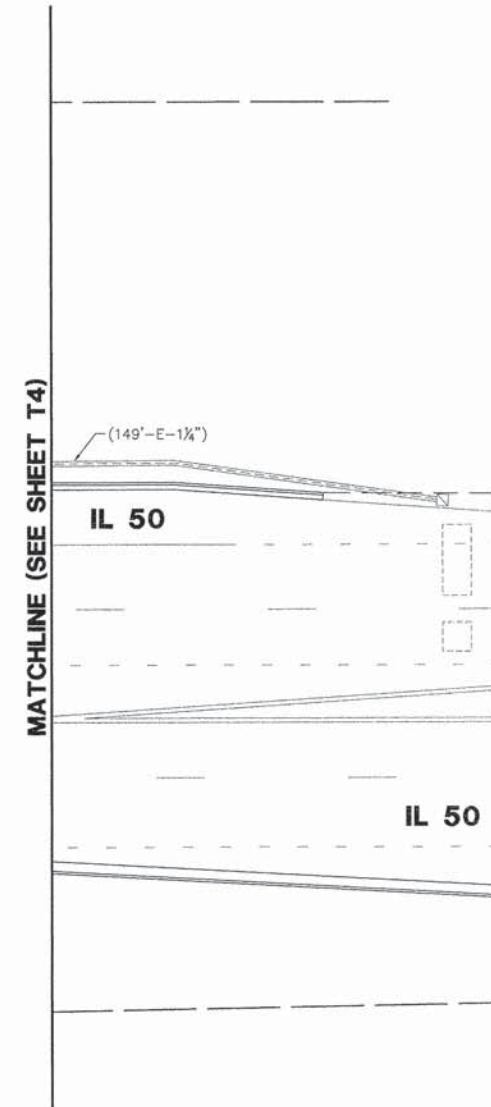
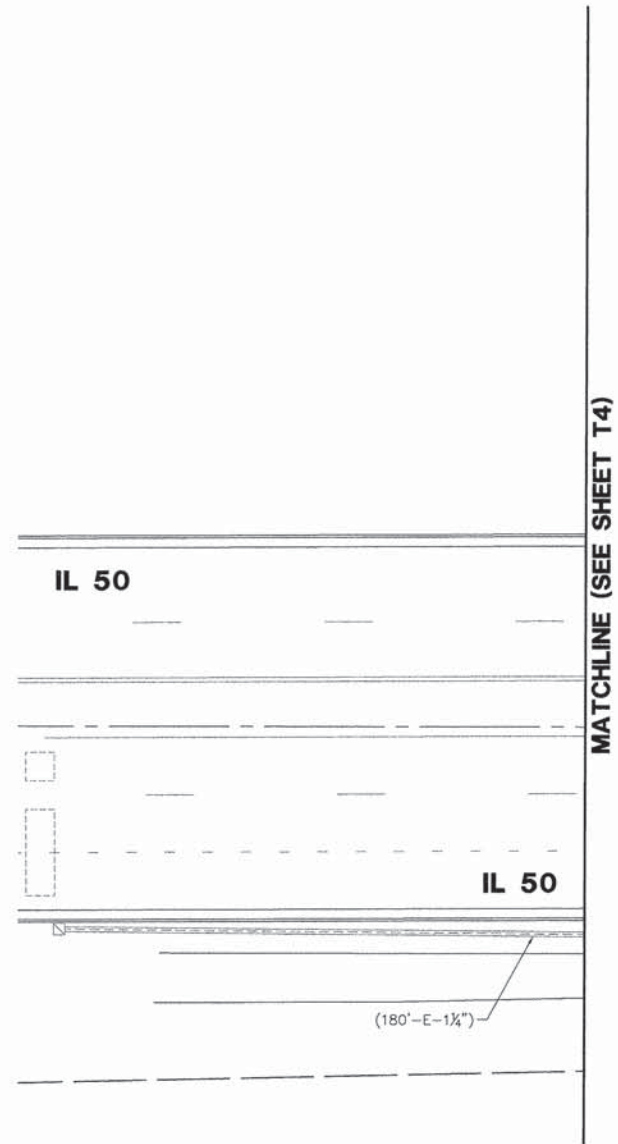
ILLINOIS DEPARTMENT OF TRANSPORTATION
TRAFFIC SIGNAL MODERNIZATION PLAN
IL 50 AT NORTHFIELD SQUARE SOUTH ENTRANCE

SCALE: 1"=20'
DATE: DRAWN BY: ZCW
CHECKED BY: DPB

MATCHLINE (SEE SHEET T2)

MATCHLINE (SEE SHEET T5)

ROUTES	SECTION	COUNTY	TOTAL SHEETS	SHEET NO.
IL ROUTE 50 - F.A.P. 840 ARMOUR ROAD	10-00097-00-BT	KANKAKEE	15	14



03/28/2011

GHA GEWALT HAMILTON ASSOCIATES, INC.

625 Forest Edge Drive • Vernon Hills, IL 60061
Consulting Engineers & Surveyors
847-478-9700
FAX: 847-478-9701

REVISIONS		
DATE	BY	DESCRIPTION

ILLINOIS DEPARTMENT OF TRANSPORTATION
TRAFFIC SIGNAL MODERNIZATION PLAN
IL 50 AT NORTHFIELD SQUARE SOUTH ENTRANCE

SCALE: 1"=20'
DATE:

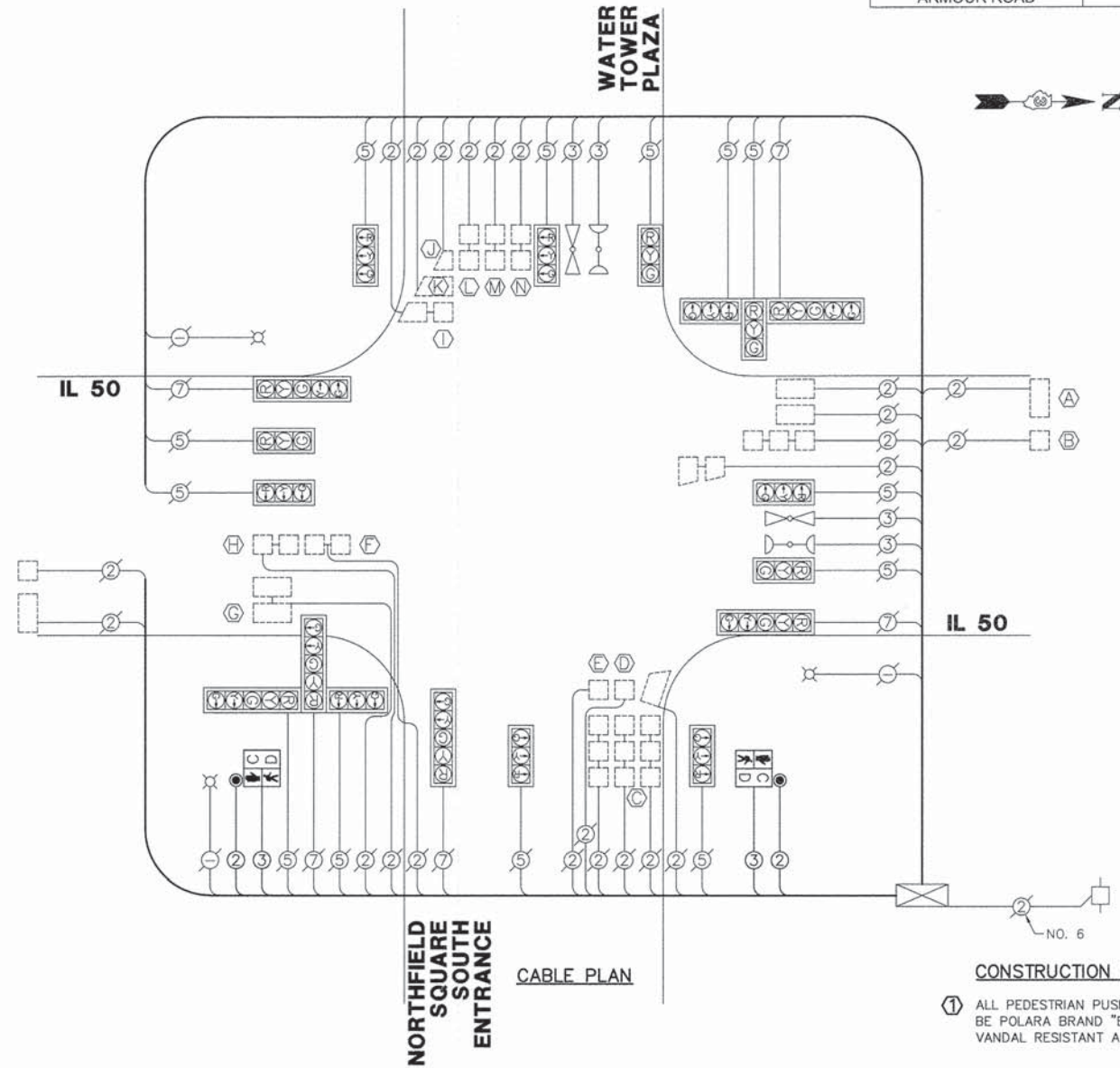
DRAWN BY: ZCW
CHECKED BY: DPB

SCHEDULE OF QUANTITIES

IL 50 AT NORTHFIELD SQUARE ENTRANCE / WATER TOWER PLAZA

NO.	QUANT.	UNIT	DESCRIPTION
1.	30	FOOT	UNDERGROUND CONDUIT, PVC, 2 1/2" DIA.
2.	1	EACH	MAINTENANCE OF EXISTING TRAFFIC SIGNAL INSTALLATION
3.	368	FOOT	ELECTRIC CABLE IN CONDUIT, SIGNAL NO. 14 2C
4.	380	FOOT	ELECTRIC CABLE IN CONDUIT, SIGNAL NO. 14 3C
5.	1	EACH	TRAFFIC SIGNAL POST, GALVANIZED STEEL 10 FT.
6.	4	FOOT	CONCRETE FOUNDATION, TYPE A
7.	1	EACH	DRILL EXISTING HANDHOLE
8.	2	EACH	PEDESTRIAN SIGNAL HEAD, LED, 1-FACE, BRACKET MOUNTED WITH COUNTDOWN TIMER
9.	1	EACH	MODIFY EXISTING CONTROLLER
10.	2	EACH	PEDESTRIAN PUSH-BUTTON, SPECIAL

ROUTES	SECTION	COUNTY	TOTAL SHEETS	SHEET NO.
IL ROUTE 50 - F.A.P. 840 ARMOUR ROAD	10-00097-00-BT	KANKAKEE	15	15



DETECTOR LOOP INDUCTANCE CHART

LOOP SYSTEM	NUMBER OF TURNS	INDUCTANCE (mH)	FREQUENCY (Hz)
A	6	562	35116
B	6	352	34967
C	3	219	23946
D	3	129	34090
E	3	129	38165
F	3	296	27762
G	3	356	24841
H	3	296	20858
I	4	214	20770
J	4	314	20683
K	4	434	35357
L	4	554	35188
M	4	554	24073
N	4	554	21461

J PIN STATUS:
 "ON" MEANS STANDARD DETECTOR SETUP.
 "OFF" MEAN THE J WIRE HAS BEEN DISCONNECTED,
 BUT INTERACT AT THE HARNESS PANEL WITH THE NECESSARY
 SPARE CONNECTOR ATTACHED, MARKED AND INSULATED.

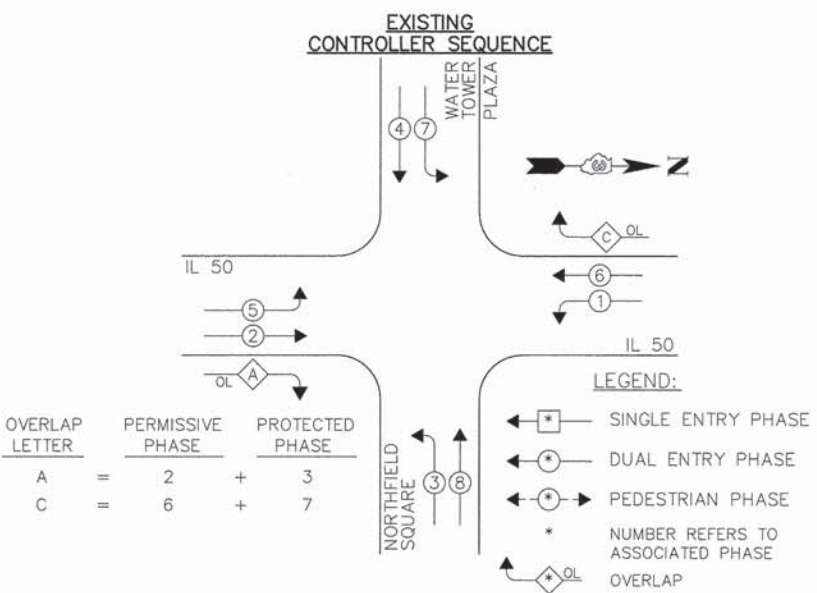
ELECTRICAL LOAD CHART

IL RTE 50			
SIGNAL SECTION	NUMBER	WATTAGE EACH	BURN TIME %
RED	10	17	26
YELLOW	10	25	5
GREEN	10	15	75
YELLOW ARROW	4	12	5
GREEN ARROW	4	12	5

NORTHFIELD SQUARE SOUTH ENTRANCE / WATER TOWER PLAZA			
SIGNAL SECTION	NUMBER	WATTAGE EACH	BURN TIME %
RED	8	17	20
YELLOW	8	25	5
GREEN	8	15	75
YELLOW ARROW	2	12	5
GREEN ARROW	2	12	5
PEDESTRIAN SIG.	2	25	100

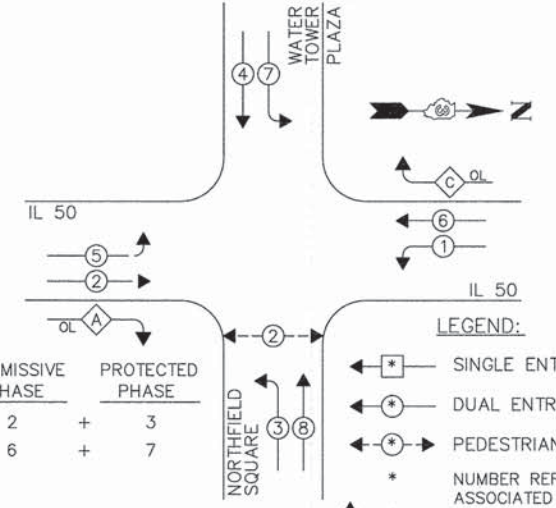
TRAFFIC SIGNAL CABINET			
ITEM	NUMBER	WATTAGE EACH	BURN TIME %
CONTROLLER	1	100	100
LOOP DETECTORS	39	4	100

ITEM	NUMBER	WATTAGE EACH	BURN TIME %
LUMINAIRE	3	250	342 HRS/MO



EXISTING & PROPOSED PHASE DESIGNATION DIAGRAM

PROPOSED CONTROLLER SEQUENCE



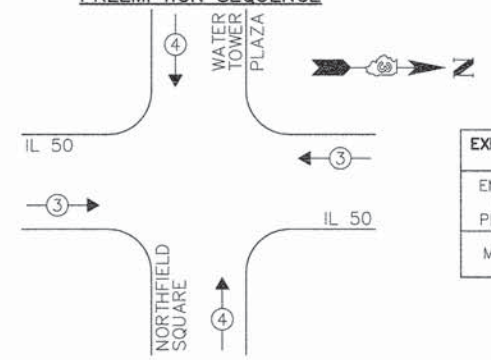
OVERLAP LETTER	PERMISSIVE PHASE	PROTECTED PHASE
A	= 2 + 3	
C	= 6 + 7	

- LEGEND:**
- ◻ SINGLE ENTRY PHASE
 - ◐ DUAL ENTRY PHASE
 - ◑ PEDESTRIAN PHASE
 - * NUMBER REFERS TO ASSOCIATED PHASE
 - ◊ OL OVERLAP

CONSTRUCTION NOTES:

- ① ALL PEDESTRIAN PUSHBUTTONS SHALL BE POLARA BRAND "BDL3 BULLDOG III VANDAL RESISTANT ADA PUSHBUTTON"

EXISTING EMERGENCY VEHICLE PREEMPTION SEQUENCE



EXIST. & PROP. EMERGENCY VEHICLE PREEMPTORS		
EMERGENCY VEHICLE PREEMPTOR	EXIST.	PROP.
	3	4
MOVEMENT	→	↑

REVISIONS

DATE	BY	DESCRIPTION

SCHEDULE OF QUANTITIES, CABLE PLAN, PHASE DESIGNATION DIAGRAM, & EMERGENCY VEHICLE PREEMPTION SEQUENCE
 IL 50 AT NORTHFIELD SQUARE SOUTH ENTRANCE

GHA GEWALT HAMILTON ASSOCIATES, INC.
 625 Forest Edge Drive • Vernon Hills, IL 60061
 Consulting Engineers & Surveyors
 847-478-9700
 FAX: 847-478-9701

SCALE: NONE
 DATE: _____
 DRAWN BY: ZCW
 CHECKED BY: DPB