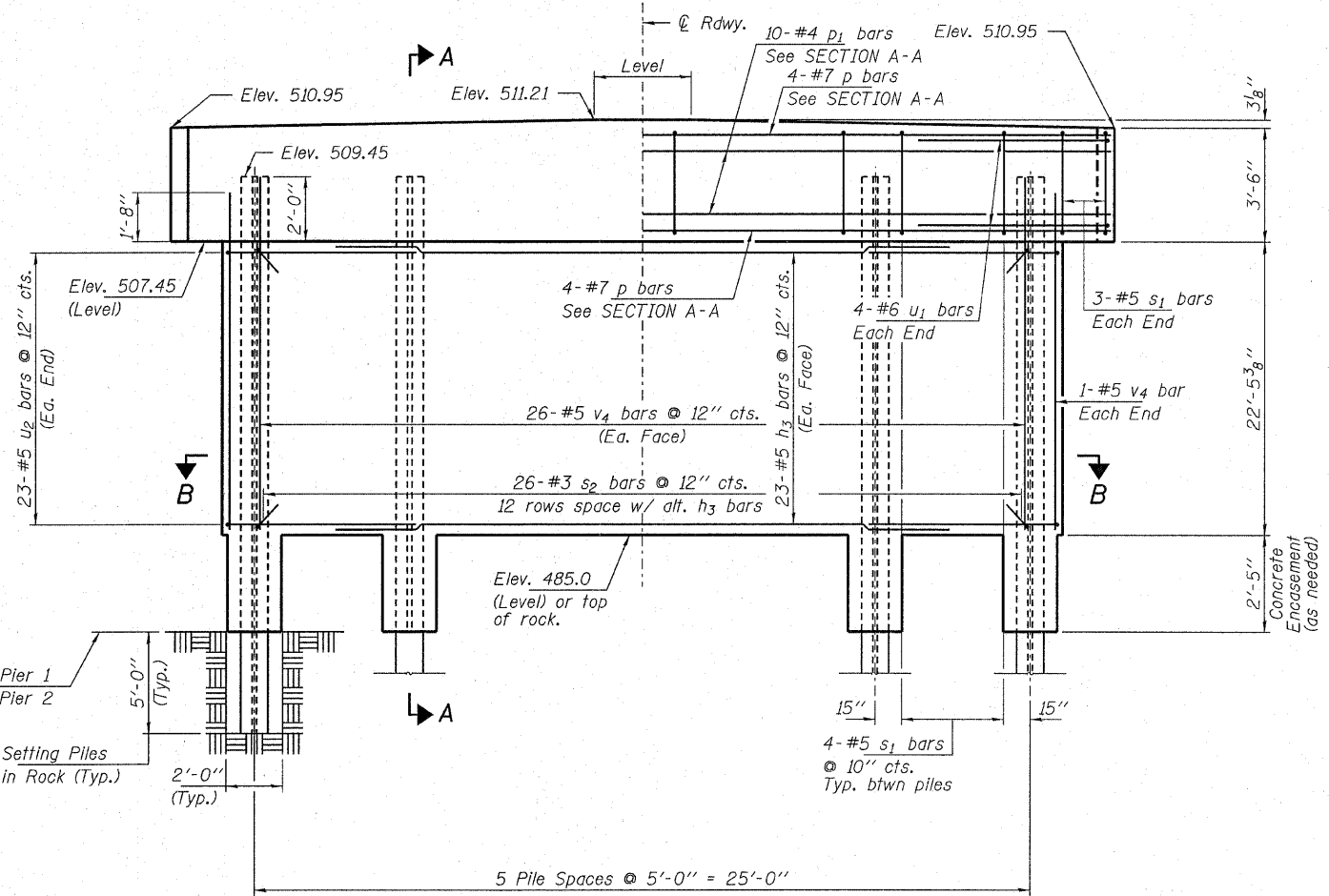
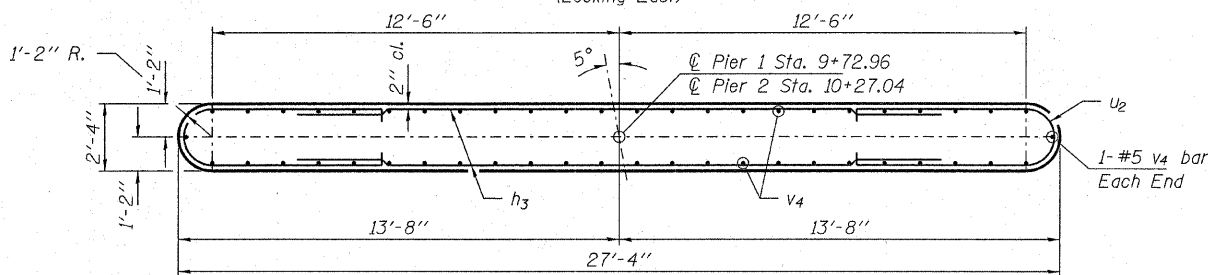


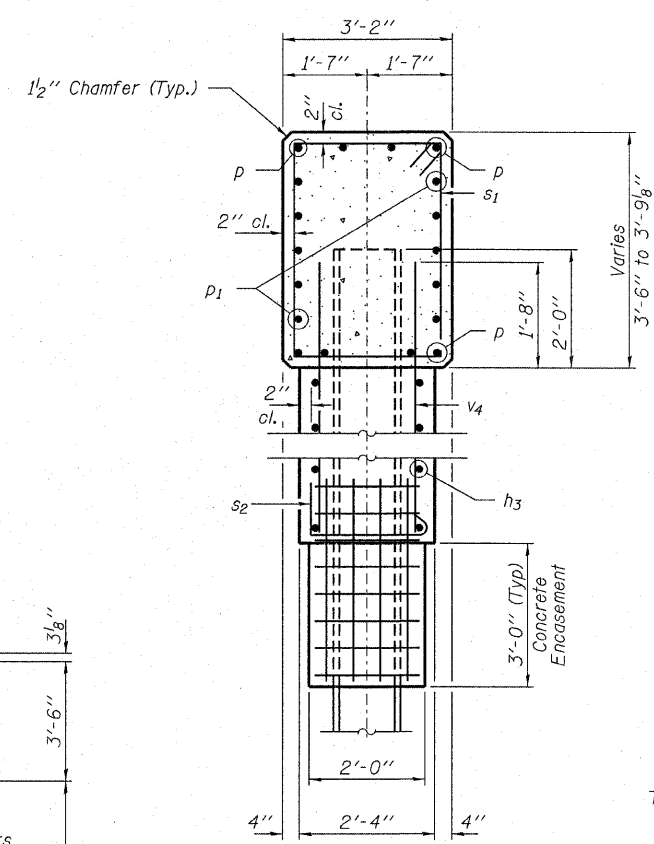
PLAN



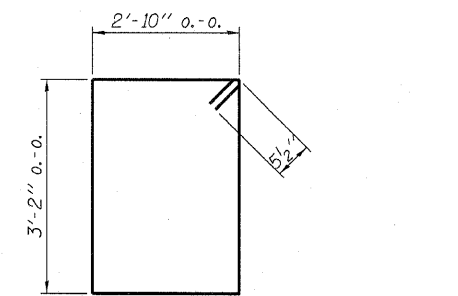
ELEVATION
(Looking East)



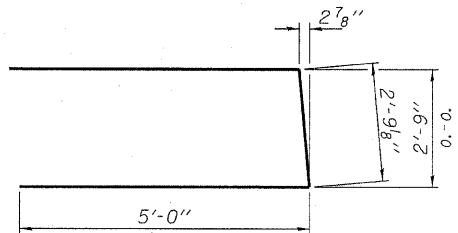
SECTION B-B



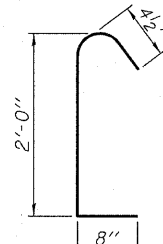
SECTION A-A



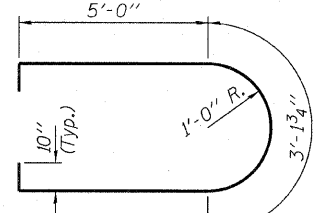
BAR s1



BAR u1



BAR s2



BAR u2

MIN. BAR LAP
#5 = 1'-8"

PILE DATA

Type: Steel HP12x53
 No. Req'd. (2 Piers): 12
 Factored Resistance Available (RF): 209 Kips/Pile
 Nominal Required Bearing (Rn): 419 Kips/Pile
 Est. Length: 32 Ft/Pile - Pier 1
 30 Ft/Pile - Pier 2

Notes: The Steel H-Piles shall be according to AASHTO M270 Grade 50.

BILL OF MATERIAL - 2 PIERS

BAR	NO.	SIZE	LENGTH	SHAPE
h3	92	#5	18'-4"	—
p	16	#7	28'-4"	—
p1	20	#4	28'-4"	—
s1	52	#5	12'-11"	□
s2	312	#3	3'-1"	└
u1	16	#6	12'-10"	U
u2	92	#5	14'-10"	U
v4	108	#5	24'-2"	—
Concrete Structures			Cu. Yd.	127.4
Reinforcement Bars			Pound	8,940
Steel Piles HP12x53			Foot	372
Concrete Encasement			Cu. Yd.	1.6

PIERS
STRUCTURE NO. 041-3738

DESIGNED - A.S.L.
CHECKED - S.W.M.
DRAWN - D.A.B.
CHECKED - D.T.M.

HAMPTON, LENZINI & RENWICK, INC.
 CIVIL & STRUCTURAL ENGINEERS
 LAND SURVEYORS
 3085 STEVENSON DRIVE, SUITE 201
 SPRINGFIELD, ILLINOIS 62703
 (217) 546-3400

T.R.	SECTION	COUNTY	TOTAL SHEETS	SHEET NO.
131	07-06121-00-BR	JEFFERSON	30	28
FARRINGTON ROAD DISTRICT		CONTRACT NO. 99350		
FED. ROAD DIST. NO.		ILLINOIS FED. AID PROJECT		

PROJECT NUMBER: 08.0126.130 DATE: 12/16/08