

BENCHMARK: Spike nail in power pole. 42' Rt., Sta. 11+83, Elev. 504.58

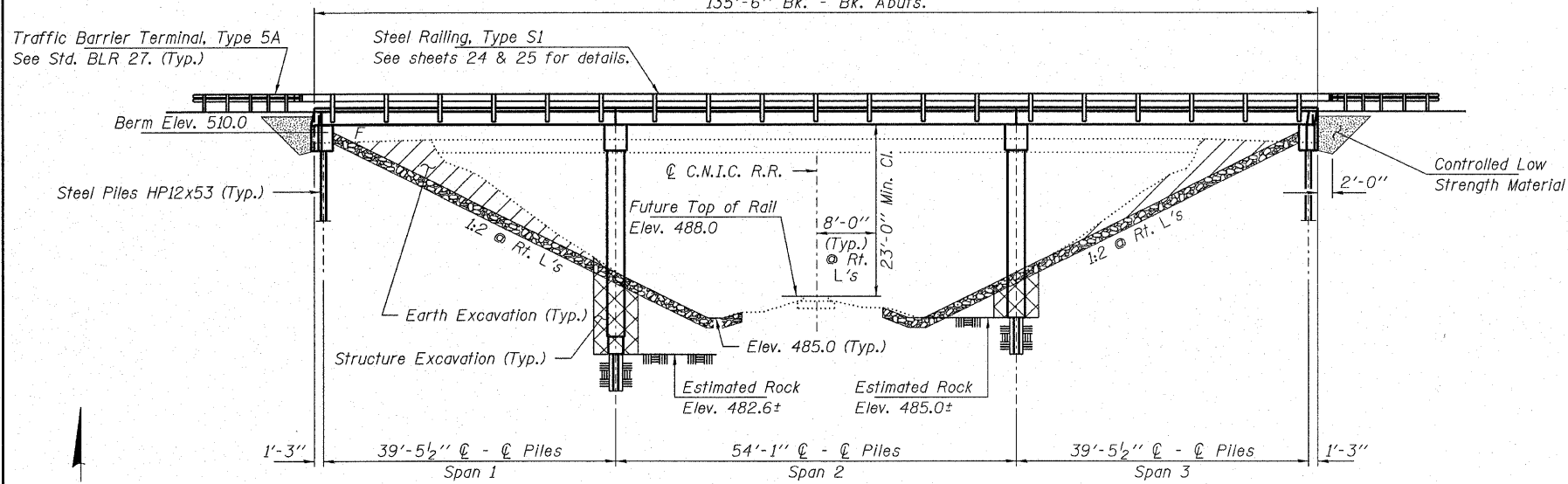
EXISTING STRUCTURE NO. 041-3027: A seven span timber deck & stringer bridge on timber pile bent abutments and piers with timber wingwalls. 101.45' fc.-fc. abutts.; 16.0' o.-o. deck. Structure closed to traffic.

No Salvage

Traffic Barrier Terminal, Type 5A
See Std. BLR 27. (Typ.)

Steel Railing, Type S1
See sheets 24 & 25 for details.

135'-6" Bk. - Bk. Abutts.

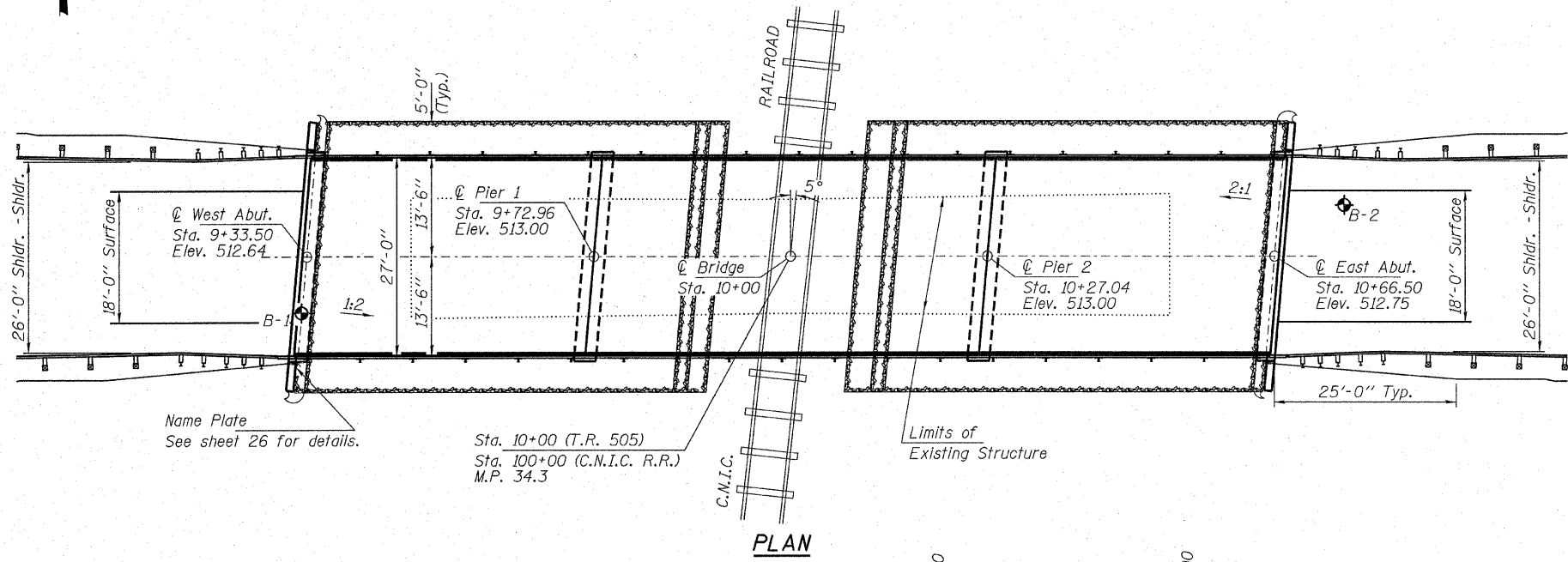
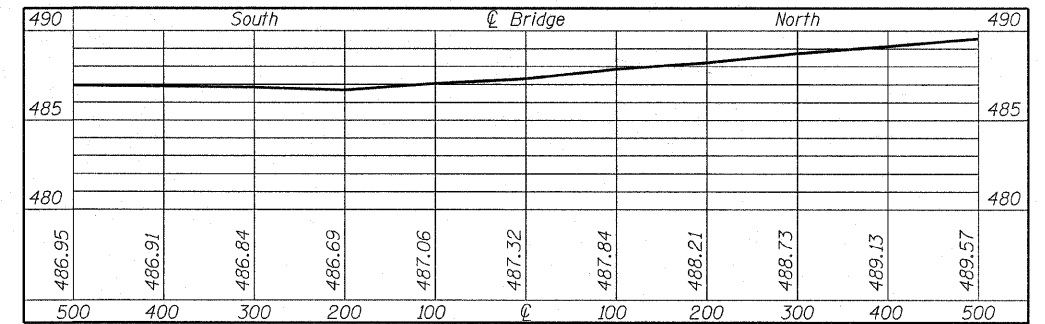


ELEVATION

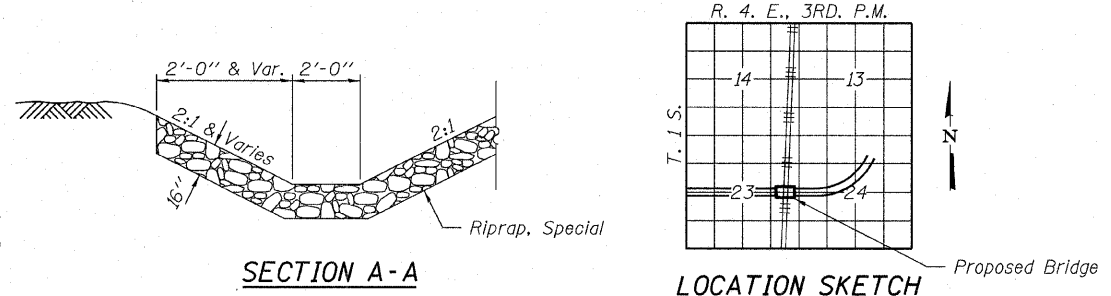
C.N.I.C. RAILROAD
BUILT 200_ BY
JEFFERSON COUNTY
SEC. 07-0621-00-BR
FARRINGTON ROAD DISTRICT
STR. NO. 041-3738
LOADING HL-93

NAME PLATE
See Std. 515001

HIGH RAIL PROFILE



PLAN



SECTION A-A

LOCATION SKETCH

TOTAL BILL OF MATERIAL

ITEM	UNIT	SUPER	SUB	TOTAL
Riprap, Special	Ton		380	380
Removal of Existing Structures	Each		1	1
Structure Excavation	Cu. Yd.		75	75
Concrete Structures	Cu. Yd.		152.3	152.3
Concrete Encasement	Cu. Yd.		4.4	4.4
Precast Prestressed Concrete Deck Beams (21" Depth)	Sq. Ft.	3,618		3,618
Reinforcement Bars	Pound		11,720	11,720
Steel Railing, Type S1	Foot	276		276
Furnishing Steel Piles HP12x53	Foot		652	652
Driving Piles	Foot		280	280
Name Plates	Each		1	1
Controlled Low Strength Material	Cu. Yd.		50	50
Setting Piles In Rock	Each		12	12

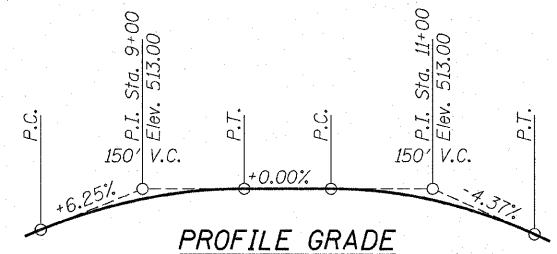
DESIGN STRESSES

FIELD UNITS

f'c = 3,500 psi
fy = 60,000 psi (Reinf.)

PRECAST PRESTRESSED UNITS

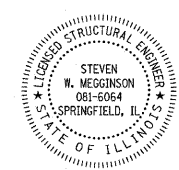
f'c = 6,000 psi
f'ci = 5,000 psi
fpu = 270,000 psi (1/2" low lax. strands)
fpbt = 201,960 psi (1/2" low lax. strands)
fy = 60,000 psi (Reinf.)



PROFILE GRADE

I certify that to the best of my knowledge, information and belief, this bridge design is structurally adequate for the design loading shown on the plans. The design is an economical one for the style of structure and complies with requirements of the current "AASHTO LRFD Specifications."

Steven W. Megginson 12-18-2008
ILLINOIS STRUCTURAL NO. 081-6064



Expires 11-30-10

GENERAL PLAN AND ELEVATION
STRUCTURE NO. 041-3738

DESIGNED - A.S.L.
CHECKED - S.W.M.
DRAWN - D.A.B.
CHECKED - D.T.M.

LOADING HL-93

Design Specifications: 2007 AASHTO LRFD with all applicable Interims.
50#/Sq. Ft. Included in dead load for future wearing surface.

SEISMIC DATA

Seismic Performance Zone (SPZ) = 2
Design Spectral Acceleration at 1.0 sec. (SD1) = 0.258g
Design Spectral Acceleration at 0.2 sec. (SD5) = 0.679g
Soil Site Class = D

HAMPTON, LENZINI & RENWICK, INC.
CIVIL & STRUCTURAL ENGINEERS
LAND SURVEYORS
3085 STEVENSON DRIVE, SUITE 201
SPRINGFIELD, ILLINOIS 62703
(217) 546-3400
PROJECT NUMBER: 08.0126.130 DATE: 12/16/08

T.R.	SECTION	COUNTY	TOTAL SHEETS	SHEET NO.
131	07-0621-00-BR	JEFFERSON	30	19
FARRINGTON ROAD DISTRICT		CONTRACT NO. 99350		
FED. ROAD DIST. NO.		ILLINOIS FED. AID PROJECT		