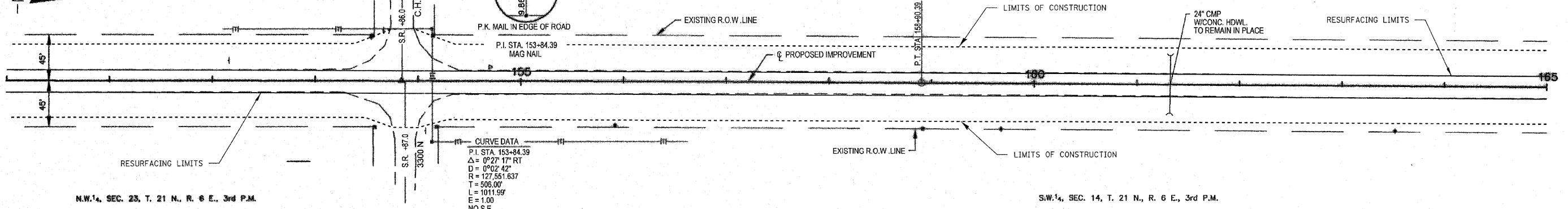
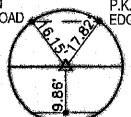
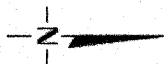


N.E. 1/4, SEC. 22, T. 21 N., R. 6 E., 3rd P.M.

S.E. 1/4, SEC. 15, T. 21 N., R. 6 E., 3rd P.M.

ROUTE NO.	SECTION	COUNTY	TOTAL SHEETS	SHEET NO.
FAS 455	95-00215-DI-RS	PIATT	21	11
FED. ROAD DIST. NO. 7		ELWOOD PROJECT		
CONTRACT NO. 91383				



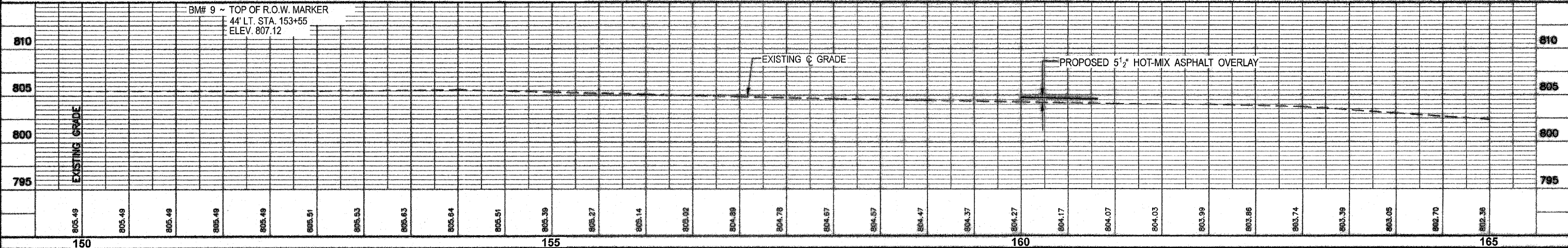
SCALES:
 1" = 50' HOR
 1" = 5' VER

N.W. 1/4, SEC. 23, T. 21 N., R. 6 E., 3rd P.M.

S.W. 1/4, SEC. 14, T. 21 N., R. 6 E., 3rd P.M.

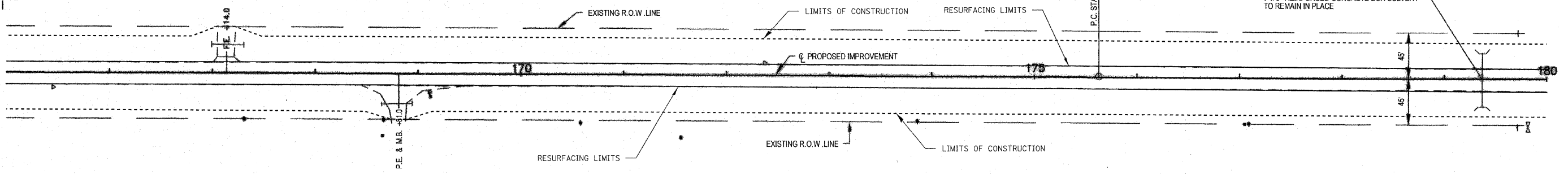
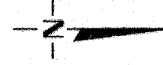
CURVE DATA

P.I. STA.	153+84.39
Δ	0°27'17" RT
D	0°02'42"
R	127,551.637
T	508.00'
L	1011.99'
E	1.00'
NO.S.E.	



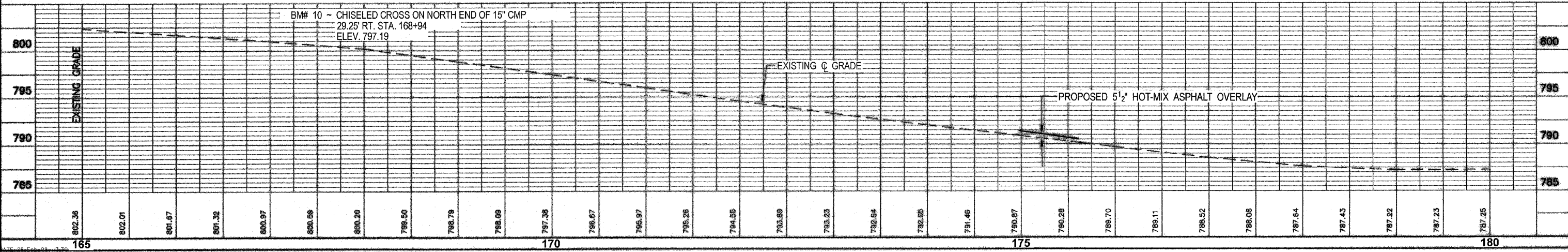
BM# 9 ~ TOP OF R.O.W. MARKER
 44' LT. STA. 153+55
 ELEV. 807.12

S.E. 1/4, SEC. 15, T. 21 N., R. 6 E., 3rd P.M.



SCALES:
 1" = 50' HOR
 1" = 5' VER

S.W. 1/4, SEC. 14, T. 21 N., R. 6 E., 3rd P.M.



BM# 10 ~ CHISELED CROSS ON NORTH END OF 15" C.M.P.
 29.25' RT. STA. 168+94
 ELEV. 797.19