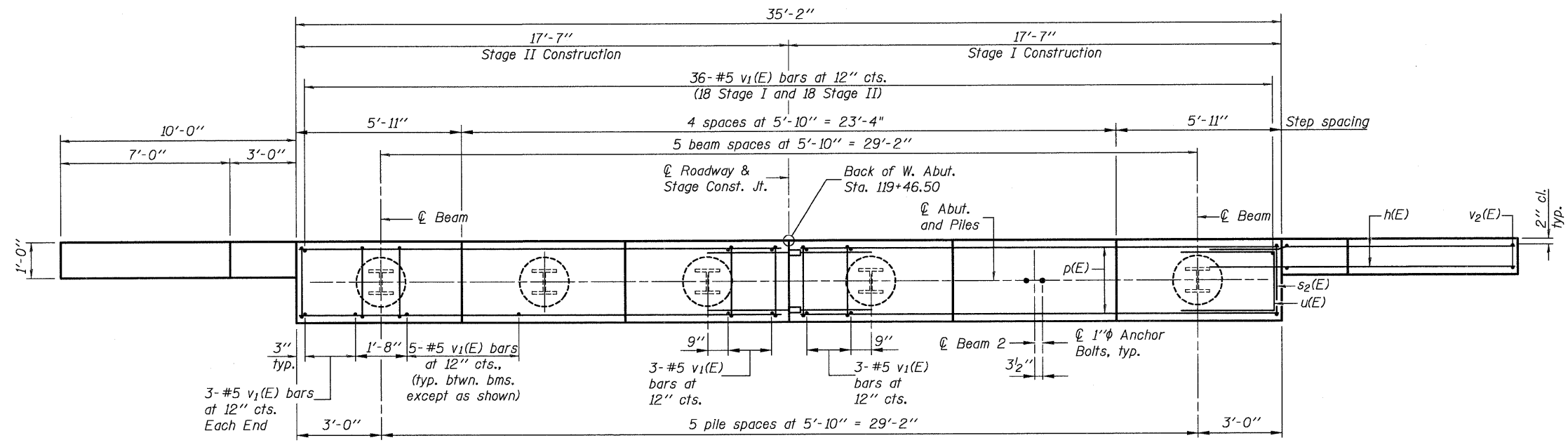
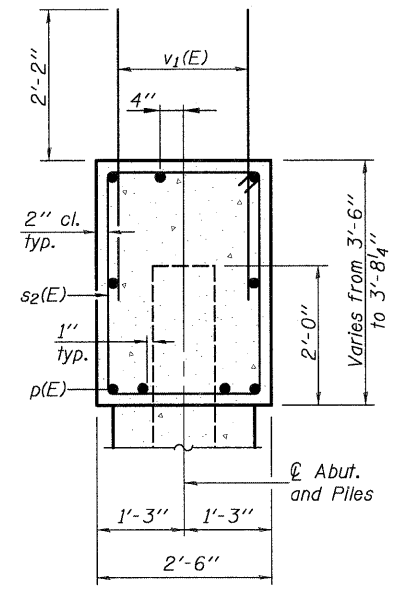
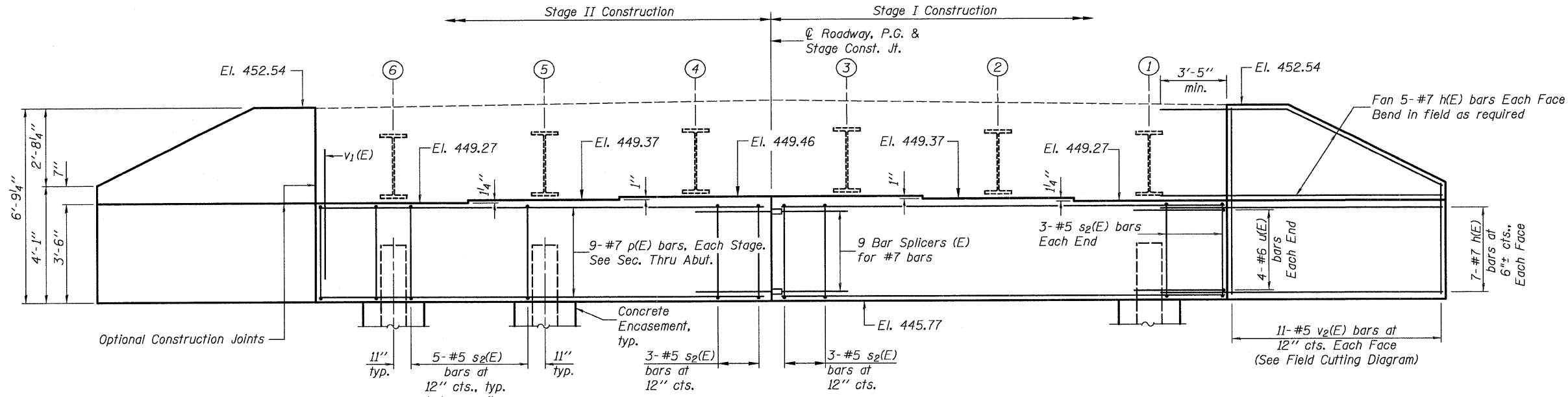


0420041.76B01.16.WABT.DGN DEC. 1. 2008

**STATE OF ILLINOIS
DEPARTMENT OF TRANSPORTATION**

Note: Four steps monolithically with cap.



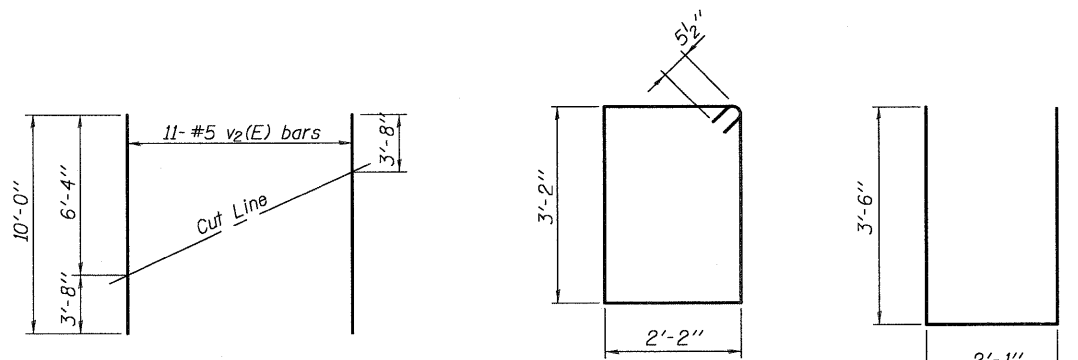
BILL OF MATERIAL

Bar	No.	Size	Length	Shape
h(E)	48	#7	14'-0"	—
p(E)	18	#7	17'-3"	—
s ₂ (E)	32	#5	11'-7"	□
u(E)	8	#6	9'-1"	—
v ₁ (E)	68	#5	4'-4"	—
v ₂ (E)	22	#5	10'-0"	—
Structure Excavation				Cu. Yd. 71
Concrete Structures				Cu. Yd. 16.0
Reinforcement Bars, Epoxy Coated				Pound 3,040
Furnishing Steel Piles HP 12x53				Foot 330
Driving Piles				Foot 330
Pile Shoes				Each 6
Concrete Encasement				Cu. Yd. 2.1

For details of Bar Splicers, see sheet 18 of 21.
For details of piles and Concrete Encasement, see sheet 19 of 21.

PILE DATA

Type: HP 12x53
Nominal Required Bearing: 419 kips
Factored Resistance Available: 210 kips
Est. Length: 55 feet
No. Production Piles: 6
No. Test Piles: 0



Order v₂(E) full length. Cut as shown and use remainder of bars in opposite face.

DESIGNED	L.D.G.
CHECKED	B.G.H.
DRAWN	K.H.L.
CHECKED	B.G.H.
AI-0	5-16-08

SHEET NO. 16 21 SHEETS	F.A.P. RTE. 325	SECTION 3BR-2	COUNTY JERSEY	TOTAL SHEETS 90	SHEET NO. 57
	S.N. 042-0041		CONTRACT NO. 76B01		
FED. ROAD DIST. NO. ILLINOIS FED. AID PROJECT					

H.M. & G. NO. 6020.III