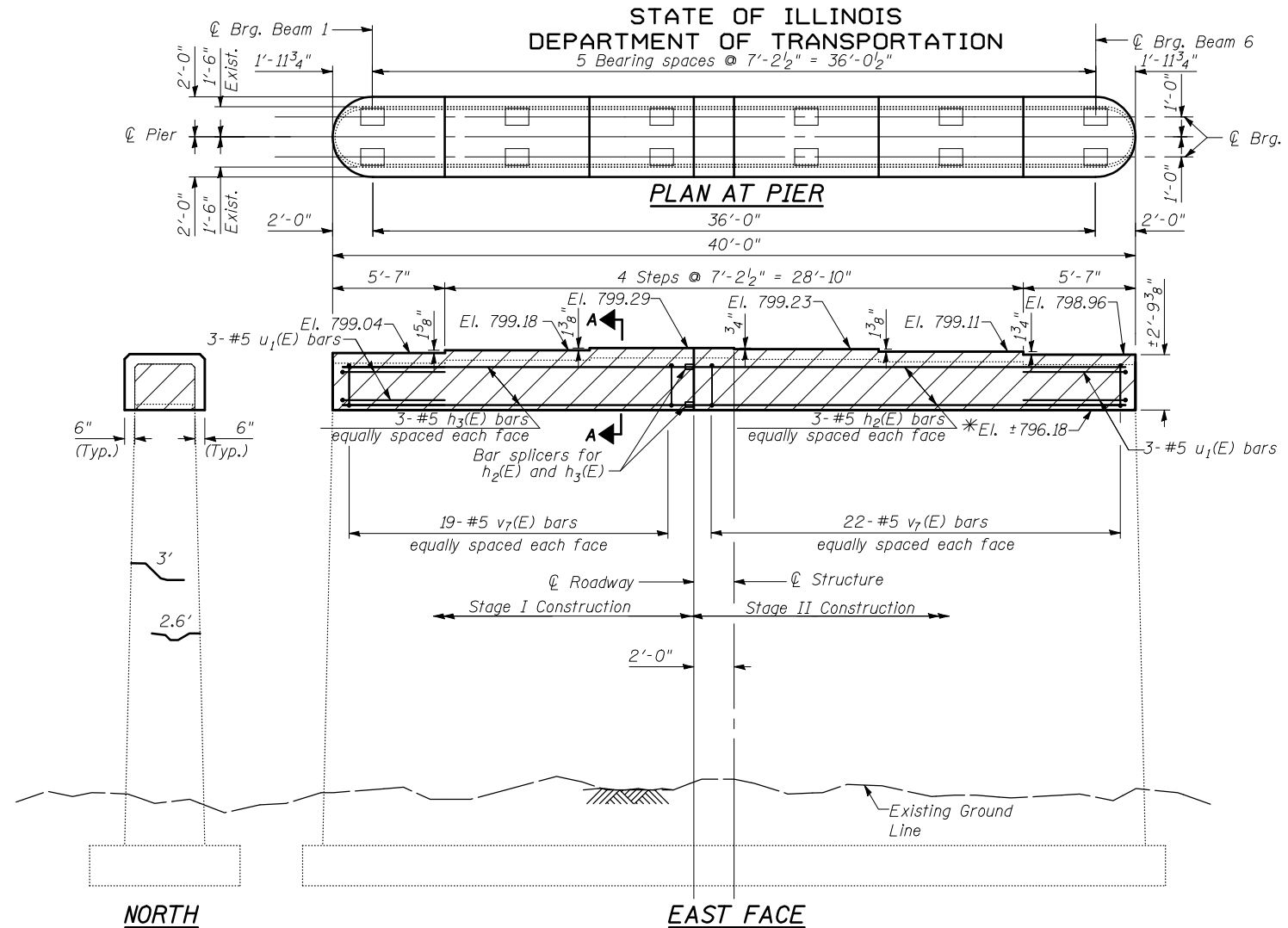
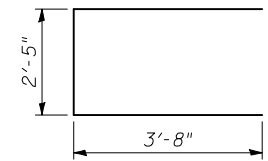


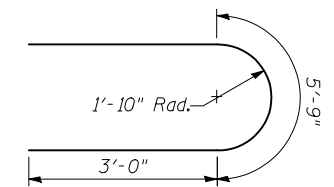
STATE OF ILLINOIS
DEPARTMENT OF TRANSPORTATION
5 Bearing spaces @ 7'-2 1/2" = 36'-0 1/2"



Notes:
Hatched areas indicate concrete removal. These areas to be poured after structural repair of concrete is complete for remainder of the pier.
For cap removal over non-repair areas, salvage existing #7 vertical bars. Bars to be cleaned, straightened, and incorporated into new construction. Cost included in cost of Concrete Removal.
For cap removal over repair areas, evaluate the existing #7 vertical bars as outlined in the Structural Repair of Concrete Special Provision.
See Sheet 11 of 27 for v1(E) bar bend information.



V7(E) BARS



u1(E) BARS

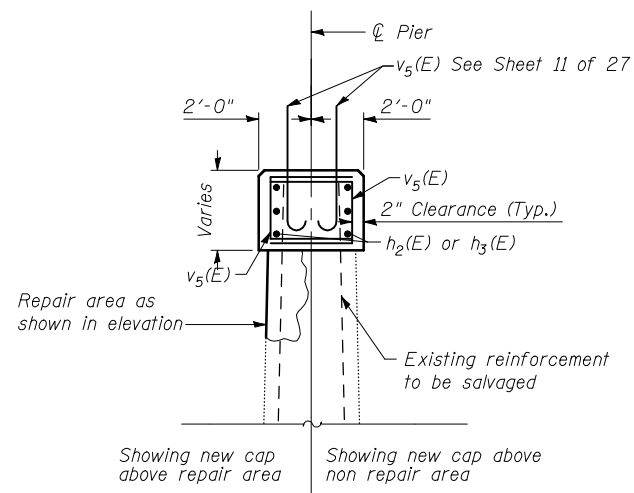
BILL OF MATERIALS

Bar	No.	Size	Length	Shape
h2(E)	6	#5	21'-10"	—
h3(E)	6	#5	17'-10"	—
v1(E)	30	#8	4'-2"	—
v7(E)	82	#5	9'-9"	—
u1(E)	6	#5	11'-9"	—
Concrete Removal		CU YD	11	
Concrete Structures		CU YD	18	
Reinforcement Bars, Epoxy Coated		POUND	1,490	
Epoxy Crack Injection		FT	7	
Structural Repair of Concrete (Depth Equal to or less than 5 inches)		SQ FT	120	

*Start removal at bottom of existing notch detail

WESTBOUND PIER 2
REPAIR DETAILS
I-74 OVER LITTLE KICKAPOO CREEK
STRUCTURE NO. 057-0121

STRAND ASSOCIATES, INC.



SECTION A-A

LEGEND

- Crack - Epoxy Crack Injection
- Portion of Existing Structure To Be Removed
- Structural Repair of Concrete (Depth Less than or Equal to 5 inches)

DESIGNED	RRD
CHECKED	AJS
DRAWN	KAS
CHECKED	JAR

SHEET NO. 25 27 SHEETS	F.A.I. RTE. 74	SECTION (57-21B)BR	COUNTY MCLEAN	TOTAL SHEETS 61	SHEET NO. 37
	PIER REPAIR DETAILS (4 OF 4)			CONTRACT NO. 70641	
FED. ROAD DIST. NO. 7 ILLINOIS FED. AID PROJECT					