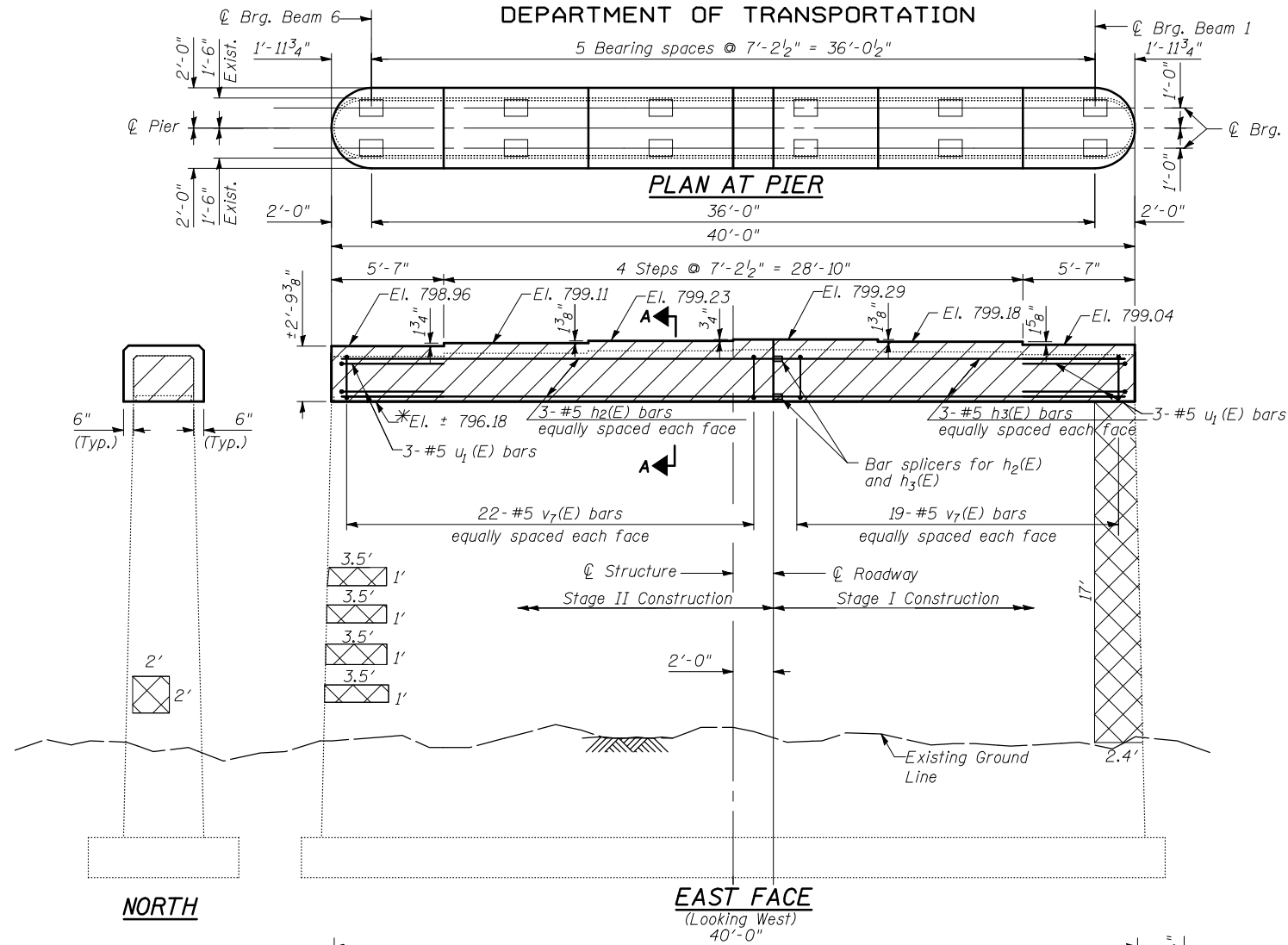
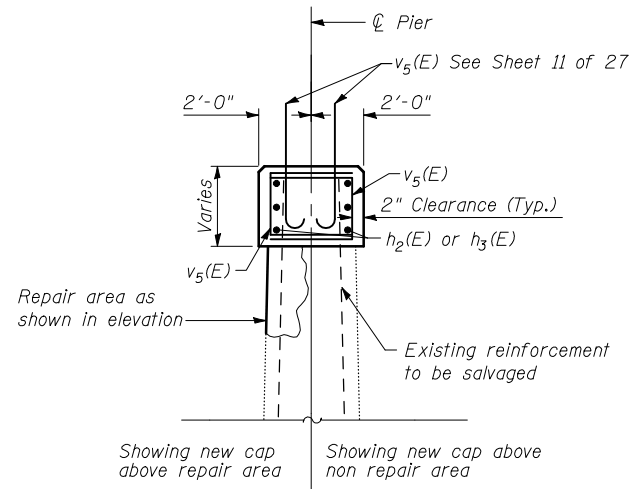


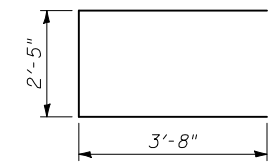
STATE OF ILLINOIS
DEPARTMENT OF TRANSPORTATION



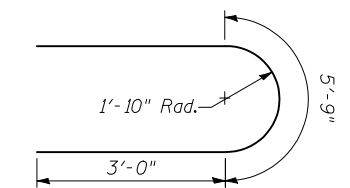
Notes:
Hatched areas indicate concrete removal. These areas to be poured after structural repair of concrete is complete for remainder of the pier.
For cap removal over non-repair areas, salvage existing #7 vertical bars. Bars to be cleaned, straightened, and incorporated into new construction. Cost included in cost of Concrete Removal.
For cap removal over repair areas, evaluate the existing #7 vertical bars as outlined in the Structural Repair of Concrete Special Provision.
See Sheet 11 of 27 for v1(E) bar bend information.



SECTION A-A



v7(E) BARS



u1(E) BARS

BILL OF MATERIALS

Bar	No.	Size	Length	Shape
h2(E)	6	#5	21'-10"	—
h3(E)	6	#5	17'-10"	—
v1(E)	30	#8	4'-2"	U
v7(E)	82	#5	9'-9"	—
u1(E)	6	#5	11'-9"	—
Concrete Removal			CU YD	11
Concrete Structures			CU YD	18
Reinforcement Bars, Epoxy Coated			POUND	1,490
Structural Repair of Concrete (Depth Equal to or less than 5 inches)			SQ FT	141

* Start removal at bottom of existing notch detail

LEGEND

- Crack - Epoxy Crack Injection
- Portion of Existing Structure To Be Removed
- Structural Repair of Concrete (Depth Less than or Equal to 5 inches)

DESIGNED	RRD
CHECKED	AJS
DRAWN	KAS
CHECKED	JAR

EASTBOUND PIER 2
REPAIR DETAILS
I-74 OVER LITTLE KICKAPOO CREEK
STRUCTURE NO. 057-0120

STRAND ASSOCIATES, INC.

SHEET NO. 23 27 SHEETS	F.A.I. RTE. 74	SECTION (57-21B)BR	COUNTY MCLEAN	TOTAL SHEETS 61	SHEET NO. 35
	PIER REPAIR DETAILS (2 OF 4)			CONTRACT NO. 70641	
FED. ROAD DIST. NO. 7 ILLINOIS FED. AID PROJECT					