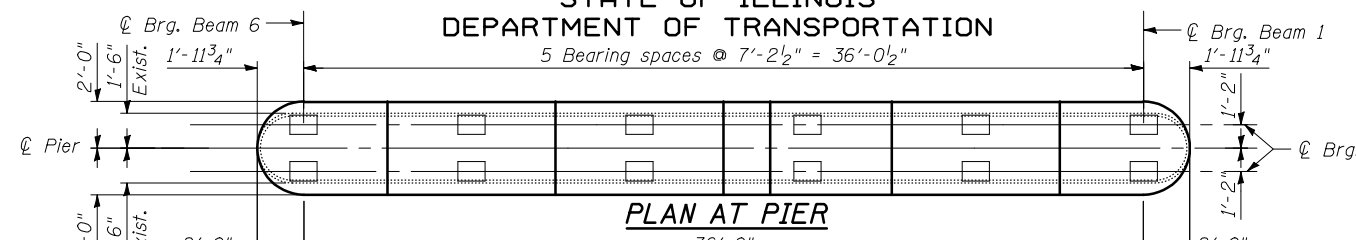
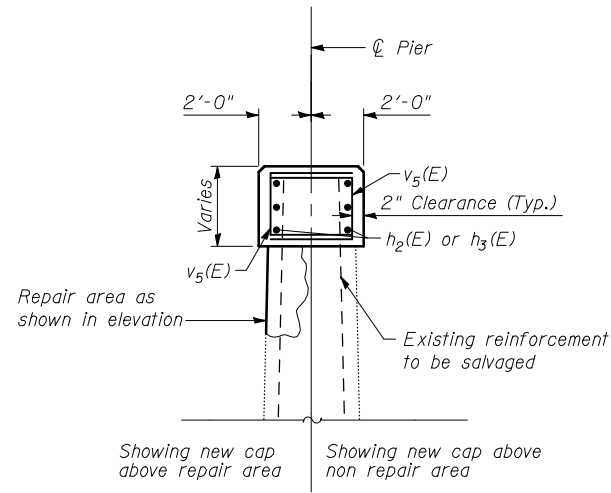


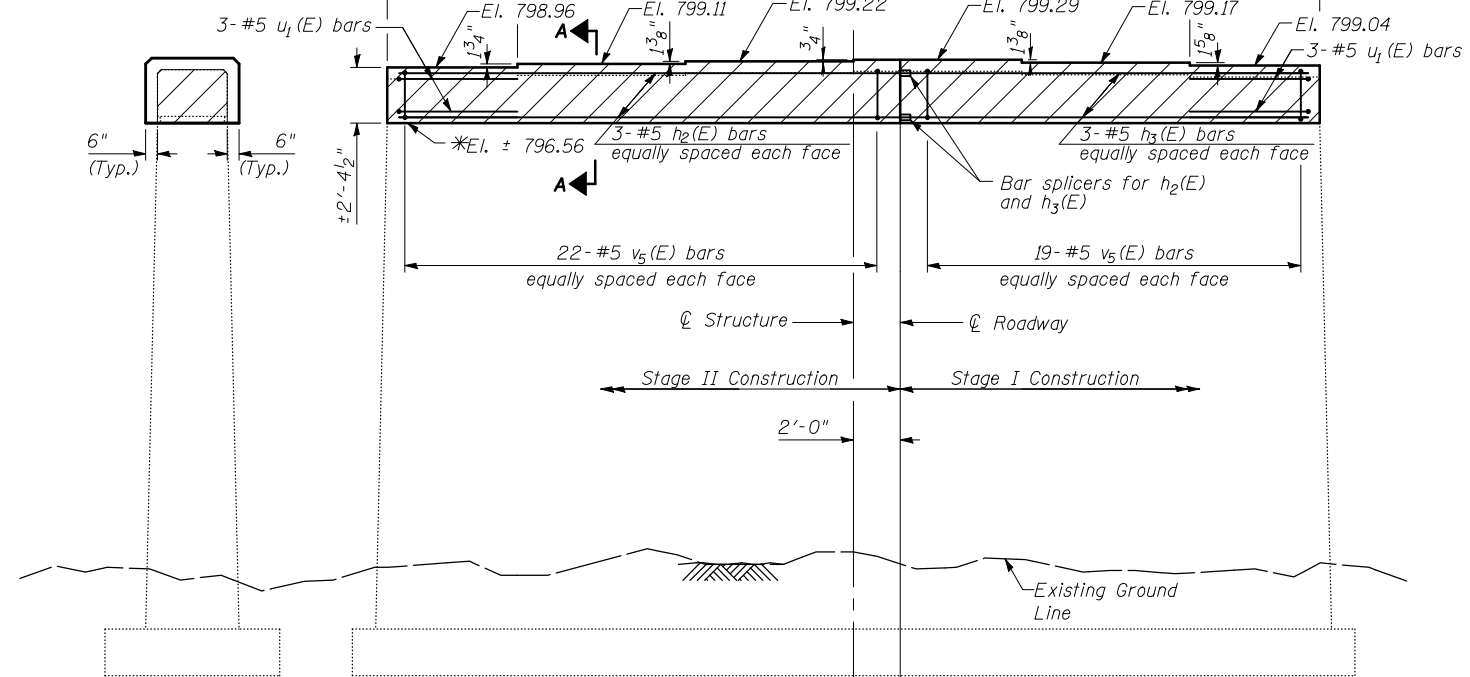
STATE OF ILLINOIS
DEPARTMENT OF TRANSPORTATION



Notes:
Hatched areas indicate concrete removal. These areas to be poured after structural repair of concrete is complete for remainder of the pier.
For cap removal over non-repair areas, salvage existing #7 vertical bars. Bars to be cleaned, straightened, and incorporated into new construction. Cost included in cost of Concrete Removal.
For cap removal over repair areas, evaluate the existing #7 vertical bars as outlined in the Structural Repair of Concrete Special Provision.

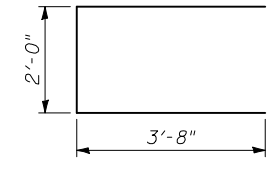


SECTION A-A

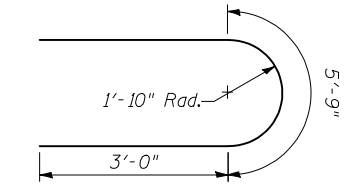


NORTH

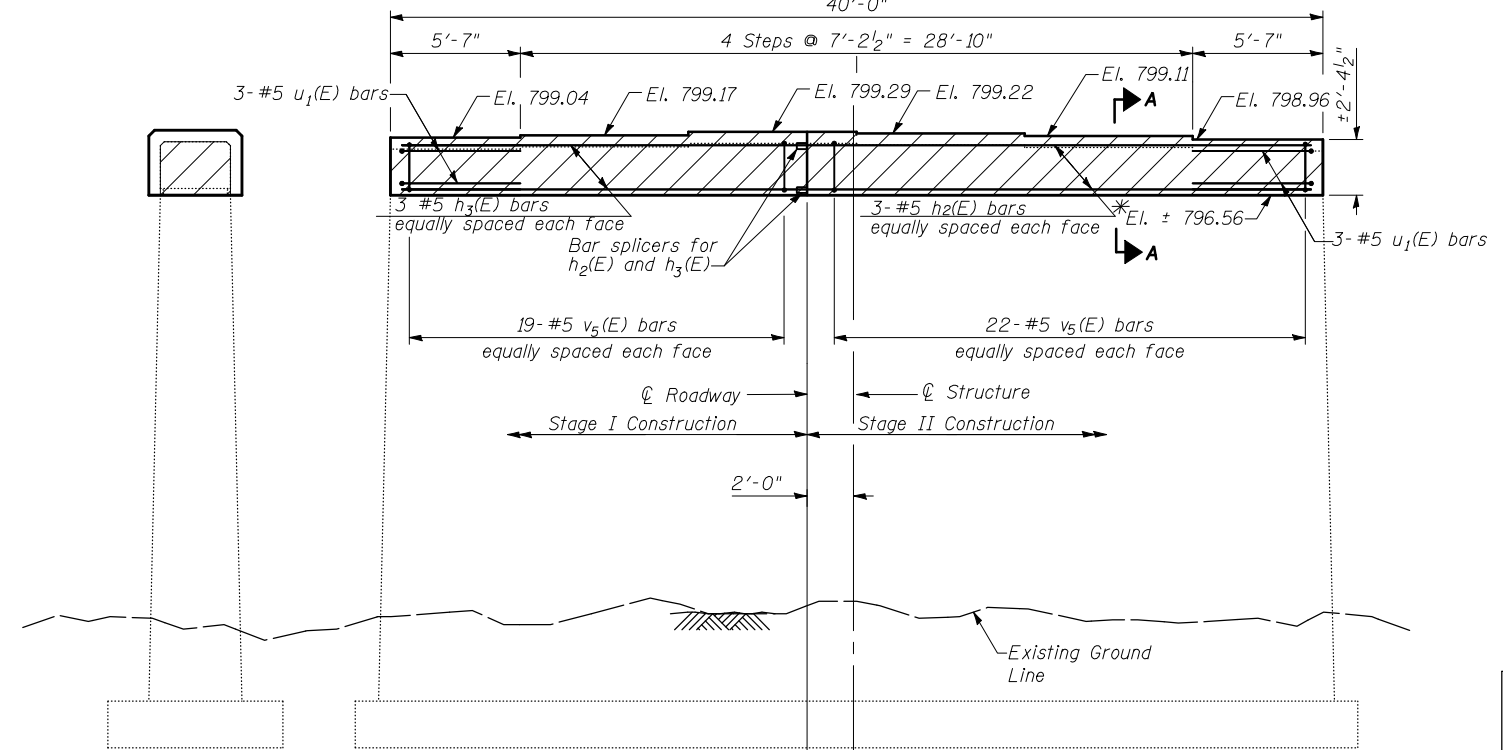
EAST FACE
(Looking West)



v5(E) BARS



u1(E) BARS



SOUTH

WEST FACE
(Looking East)

BILL OF MATERIALS

Bar	No.	Size	Length	Shape
h2(E)	6	#5	21'-10"	▬
h3(E)	6	#5	17'-10"	▬
v5(E)	82	#5	9'-4"	▬
u1(E)	6	#5	11'-9"	U
Concrete Removal			CU YD	11
Concrete Structures			CU YD	16
Reinforcement Bars, Epoxy Coated			POUND	1,120

*Start removal at bottom of existing notch detail

LEGEND

- Crack - Epoxy Crack Injection
- Portion of Existing Structure To Be Removed
- Structural Repair of Concrete (Depth Less than or Equal to 5 inches)

DESIGNED	RRD
CHECKED	AJS
DRAWN	KAS
CHECKED	JAR

EASTBOUND PIER 1
REPAIR DETAILS
I-74 OVER LITTLE KICKAPOO CREEK
STRUCTURE NO. 057-0120

STRAND ASSOCIATES, INC.

SHEET NO. 22	F.A.I. RTE.	SECTION	COUNTY	TOTAL SHEETS	SHEET NO.
	74	(57-21B)BR	MCLEAN	61	34
27 SHEETS	PIER REPAIR DETAILS (1 OF 4)		CONTRACT NO. 70641		
FED. ROAD DIST. NO. 7 ILLINOIS FED. AID PROJECT					