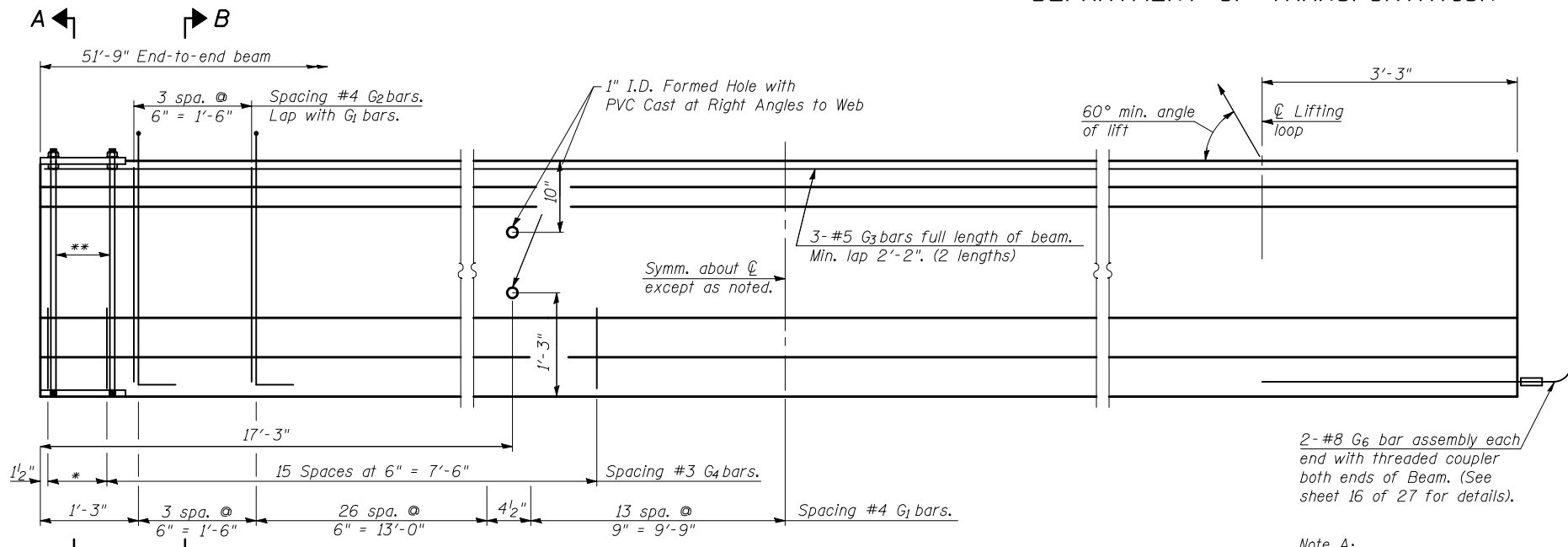
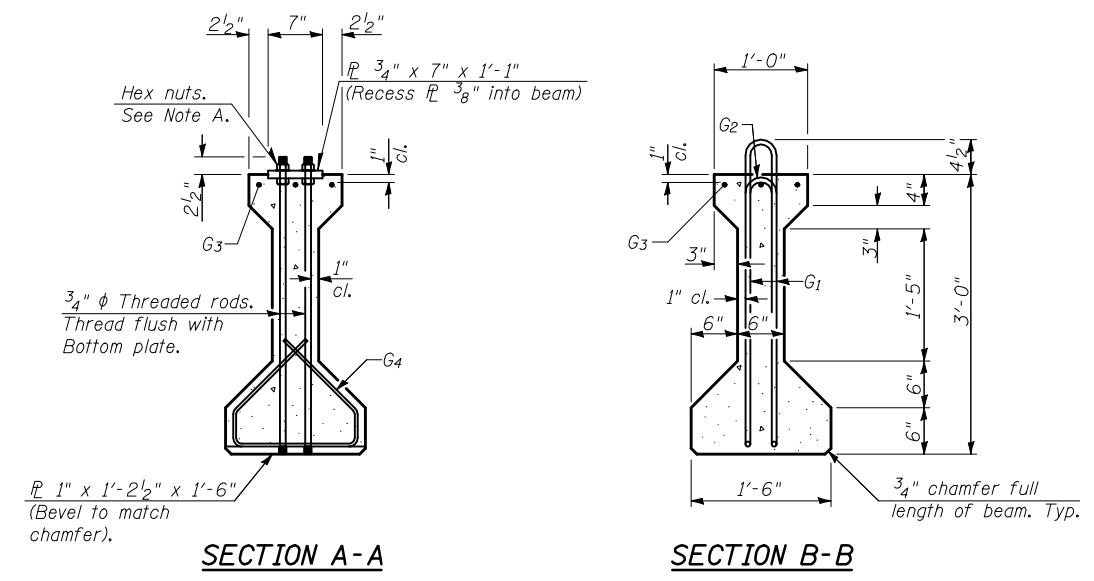


STATE OF ILLINOIS
DEPARTMENT OF TRANSPORTATION

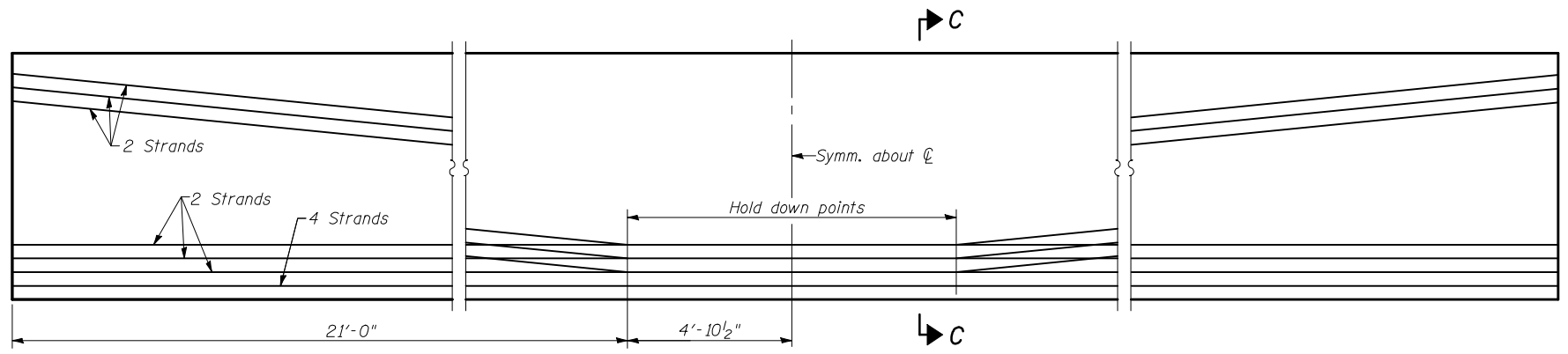


ELEVATION OF BEAM
(Showing reinforcement & dimensions)

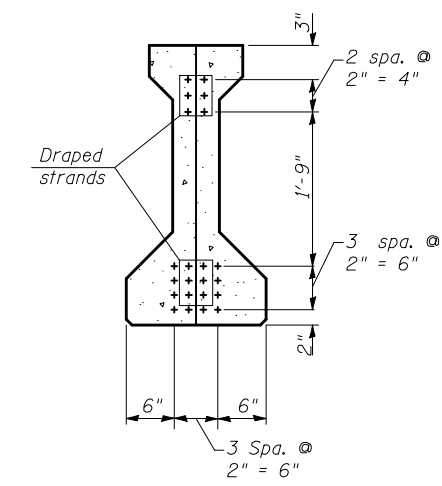
*3 spaces at 3" = 9".
**4-3/4" ϕ threaded rods at 3" cts., Each Face.



Note A:
Hex nuts (top and bottom) with lock washers (top). Only tighten sufficiently to compress lock washers.



ELEVATION OF BEAM
(Showing prestressing steel)



*****BAR LIST**
ONE BEAM ONLY

Span 2

Bar	No.	Size	Length	Shape
G ₁	87	#4	7'-5"	\bar{N}
G ₂	87	#4	5'-8"	\bar{N}
G ₃	6	#5	28'-0"	\bar{N}
G ₄	32	#3	4'-1"	\bar{N}
G ₆	4	#8	6'-6"	\bar{N}

***For information only

Notes:
See sheet 12 of 27 for additional details and Bill of Material.
Required release strength, f'_{ci} shall be 5,000 psi.
 $f'_{c} = 6,000$ psi

36" PPC I-BEAM B
SPAN 2
I-74 OVER LITTLE KICKAPOO CREEK
STRUCTURE NO. 057-0120
AND 057-0121

STRAND ASSOCIATES, INC.

DESIGNED	RRD
CHECKED	AJS
DRAWN	KAS
CHECKED	JAR

PI-4-36 5-16-08

SHEET NO. 15 27 SHEETS	F.A.I. RTE. 74	SECTION (57-21B)BR	COUNTY MCLEAN	TOTAL SHEETS 61	SHEET NO. 27
	BEAM DETAILS (2 OF 3)		CONTRACT NO. 70641		
FED. ROAD DIST. NO. 7 ILLINOIS FED. AID PROJECT					