

STATE OF ILLINOIS
DEPARTMENT OF TRANSPORTATION

GENERAL NOTES

Reinforcement bars shall conform to the requirements of ASTM A 706 Gr 60. See Special Provisions

Reinforcement bars designated (E) shall be epoxy coated.

Plan dimensions and details relative to existing plans are subject to nominal construction variations. The Contractor shall field verify existing dimensions and details affecting new construction and make necessary approved adjustments prior to construction or ordering of materials. Such variations shall not be cause for additional compensation for a change in scope of the work, however, the Contractor will be paid for the quantity actually furnished at the unit price bid for the work.

The embankment configuration shown shall be the minimum that must be placed and compacted prior to construction of the abutments.

The top surface of the beams shall be finished according to the IDOT Manual for Fabrication of Precast Prestressed Concrete Products.

A cantilevered sheet piling design does not appear feasible and additional members or other retention systems may be necessary. The contractor shall submit a temporary soil retention system design including plan details and calculations for review and acceptance by the Engineer.

Existing name plate shall be cleaned and relocated next to new Name Plate. Cost included with Name Plates.

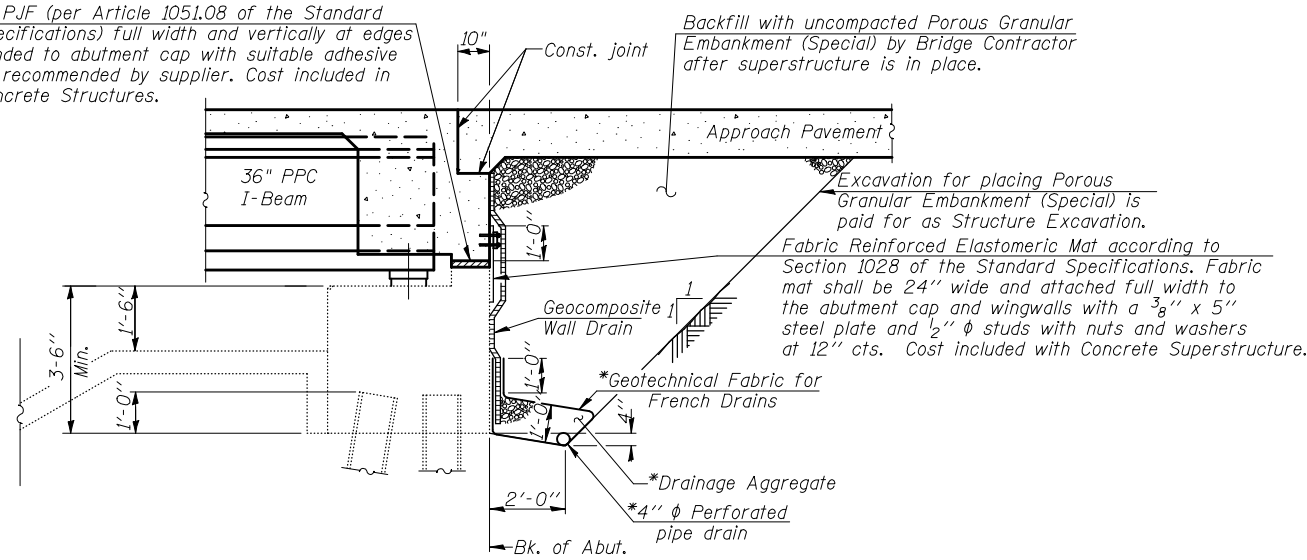
Existing reinforcement shall be cleaned and incorporated into the new construction. Cost included with Concrete Removal.

Slip forming of the parapets is not allowed.

Saw cut gooving of the approach pavement is required, see roadway plans.

2" P.J.F (per Article 1051.08 of the Standard Specifications) full width and vertically at edges bonded to abutment cap with suitable adhesive as recommended by supplier. Cost included in Concrete Structures.

Backfill with uncompacted Porous Granular Embankment (Special) by Bridge Contractor after superstructure is in place.



SECTION THRU SEMI-INTEGRAL ABUTMENT

(Horiz. dim. @ Rt. L's)

*Included in the cost of Pipe Underdrains for Structures.

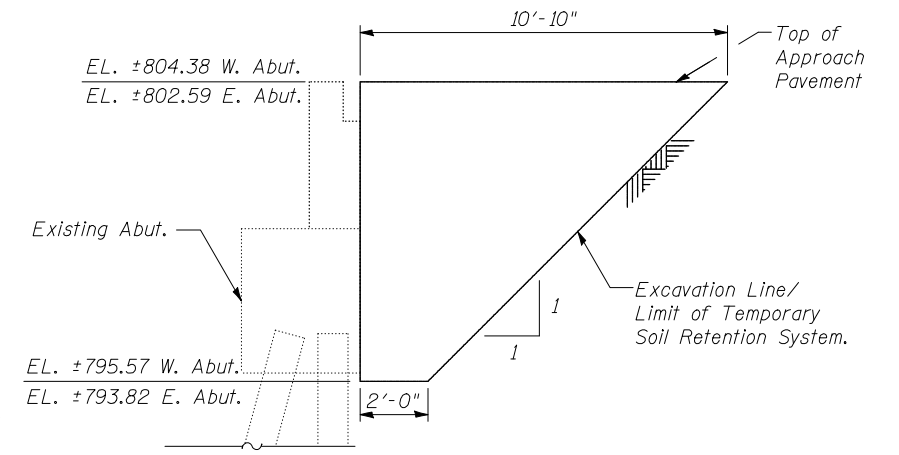
Note:

All drainage system components shall extend to 2'-0" from the end of each wingwall except an outlet pipe shall extend until intersecting with the side slopes. The pipes shall drain into concrete headwalls. (See Article 601.05 of the Standard Specifications and Highway Standard 601101).

TOTAL BILL OF MATERIAL

ITEM	UNIT	SUPER	SUB	TOTAL
* Porous Granular Embankment (Special)	CU YD	0	276	276
Removal Of Existing Superstructures	EACH	2	0	2
Concrete Removal	CU YD	0	132	132
Structure Excavation	CU YD	0	356	356
Concrete Structures	CU YD	0	96	96
Concrete Superstructure	CU YD	543	0	543
Bridge Deck Grooving	SQ YD	1,352	0	1,352
Protective Coat	SQ YD	1,958	0	1,958
Furnishing And Erecting Precast Prestressed Concrete I-Beams, 36 In.	FOOT	1,871	0	1,871
Reinforcement Bars, Epoxy Coated	POUND	122,040	10,660	132,700
Bar Splicers	EACH	1,298	32	1,330
Name Plates	EACH	2	0	2
Elastomeric Bearing Assembly, Type I	EACH	48	0	48
Anchor Bolts, 1"	EACH	96	0	96
Anchor Bolts, 1/2"	EACH	8	0	8
Epoxy Crack Injection	FOOT	0	79	79
Geocomposite Wall Drain	SQ YD	0	137	137
* Pipe Underdrains For Structures 4"	FOOT	0	269	269
* Temporary Soil Retention System	SQ FT	0	227	227
* Diamond Grinding (Bridge Section)	SQ YD	1,869	0	1,869
* Structural Repair Of Concrete (Depth Equal To Or Less Than 5 Inches)	SQ FT	0	326	326

*Special Provision



TEMPORARY SOIL RETENTION SYSTEM

Stage Construction Line at Abutments

Note:

The information shown for temporary soil retention system is estimated. It is the contractor's responsibility to provide a design for the temporary soil retention system, complete with calculations and drawings, sealed by a licensed structural engineer, for the Engineer's review in accordance with contract special provisions.

STATION 780+50
REBUILT 20__ BY
STATE OF ILLINOIS
F.A.I. RT. 74 SEC. (57-21B) BR
LOADING HL-93
STRUCTURE NO. 057-0120

NAME PLATE
See Std. 515001

STATION 780+50
REBUILT 20__ BY
STATE OF ILLINOIS
F.A.I. RT. 74 SEC. (57-21B) BR
LOADING HL-93
STRUCTURE NO. 057-0121

NAME PLATE
See Std. 515001

Note:

Existing name plates to be cleaned and placed adjacent to new plates. Cost included with "Name Plates."

**GENERAL NOTES, TOTAL
BILL OF MATERIALS &
MISCELLANEOUS DETAILS
I-74 OVER LITTLE KICKAPOO CREEK
STRUCTURE NO. 057-0120
AND 057-0121**

STRAND ASSOCIATES, INC.

DESIGNED	RRD
CHECKED	AJS
DRAWN	KAS
CHECKED	JAR

SHEET NO. 2 27 SHEETS	F.A.I. RTE. 74	SECTION (57-21B)BR	COUNTY MCLEAN	TOTAL SHEETS 61	SHEET NO. 14
	GENERAL DATA			CONTRACT NO. 70641	
FED. ROAD DIST. NO. 7 ILLINOIS FED. AID PROJECT					