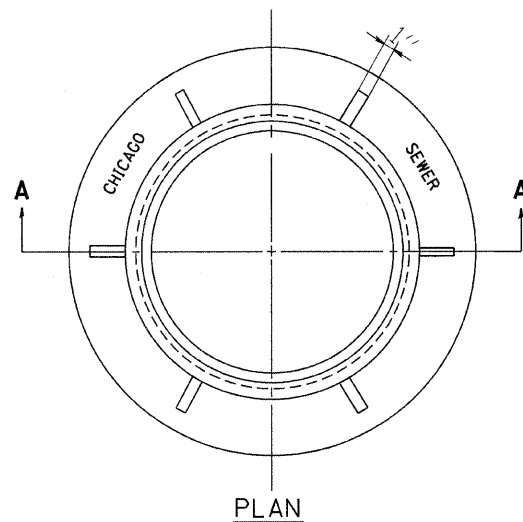
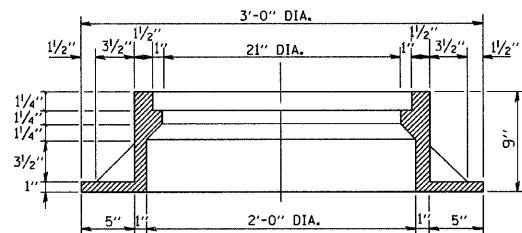


F.A. RTE.	SECTION	COUNTY	TOTAL SHEETS	SHEET NO.
			101	094
STA.		TO STA.		
FED. ROAD DIST. NO.		ILLINOIS	FED. AID PROJECT	



PLAN

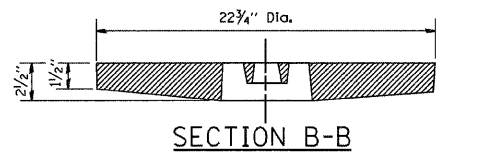


SECTION A-A

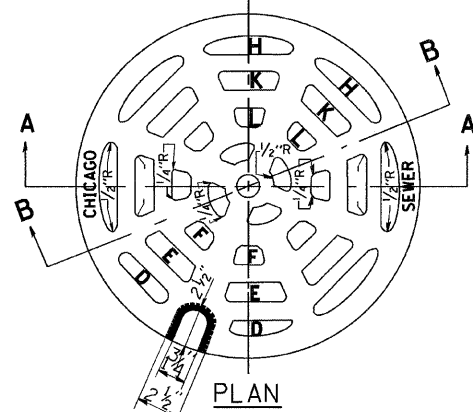
NOTE: METAL PLATES MUST BE FURNISHED FOR PERFORATED LIDS ON MANHOLES

**CHICAGO STANDARD MANHOLE FRAME**

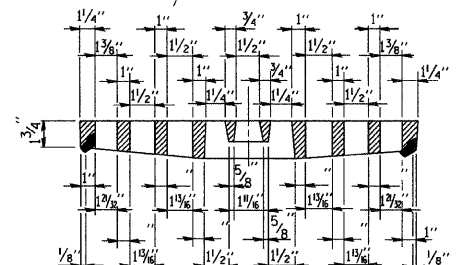
SCALE: 1 1/2"=1'-0"  
MATERIAL: CAST IRON



SECTION B-B



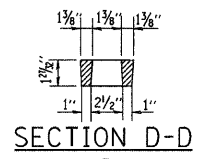
PLAN



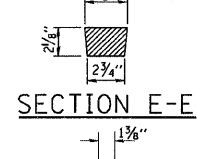
SECTION A-A

**PERFORATED LID FOR CATCH BASINS & MANHOLES**

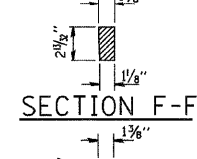
SCALE: 2"=1'-0"  
MATERIAL: CAST IRON



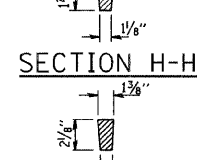
SECTION D-D



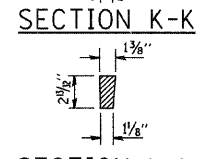
SECTION E-E



SECTION F-F

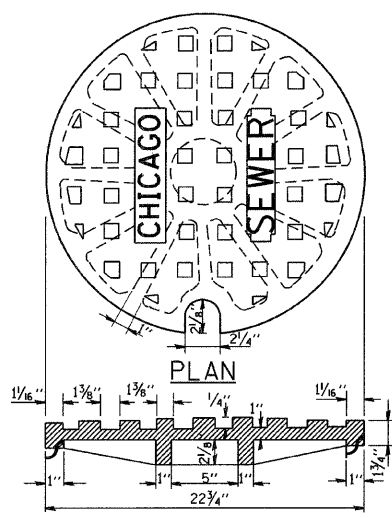


SECTION H-H

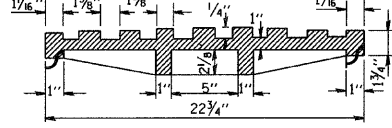


SECTION K-K

SECTION L-L



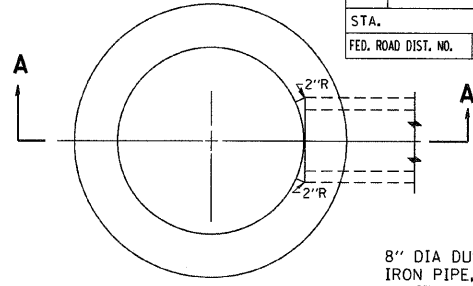
PLAN



SECTION

**SOLID LID FOR MANHOLES**

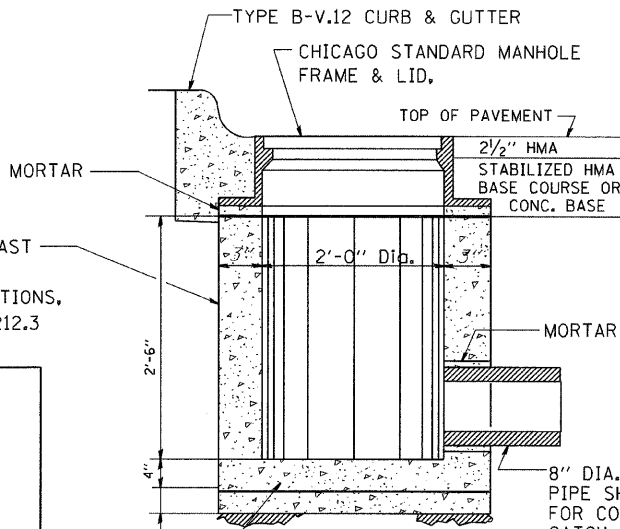
SCALE: NONE  
MATERIAL: CAST IRON



PLAN

(FRAME & LID NOT SHOWN)

8" DIA DUCTILE IRON PIPE, PART OF ITEM 7C



SECTION A-A

REINF. CONC. BASE CAST AS INTEGRAL PART OF 24" DIA. PRECAST CONC. RING

6" MINIMUM GRANULAR EMBEDMENT UNDER ALL INLETS. FURNISHING AND INSTALLING GRANULAR EMBEDMENT SHALL BE INCLUDED IN THE UNIT PRICE BID FOR ITEM 12

**STANDARD INLETS**

SCALE 1"=1'-0"  
ITEM 12

THIS INLET DETAIL IS SOMETIMES REFERRED TO AS "CHICAGO STANDARD INLET, TYPE A"

NOTE: INLETS SHALL NOT BE CONSTRUCTED UNLESS IT IS IMPOSSIBLE TO CONSTRUCT A CATCH BASIN. THE CONTRACTOR SHALL HAVE THE DEPARTMENT OF SEWERS APPROVAL BEFORE CONSTRUCTING INLETS.

CITY OF CHICAGO  
DEPARTMENT OF SEWERS  
ENGINEERING DIVISION

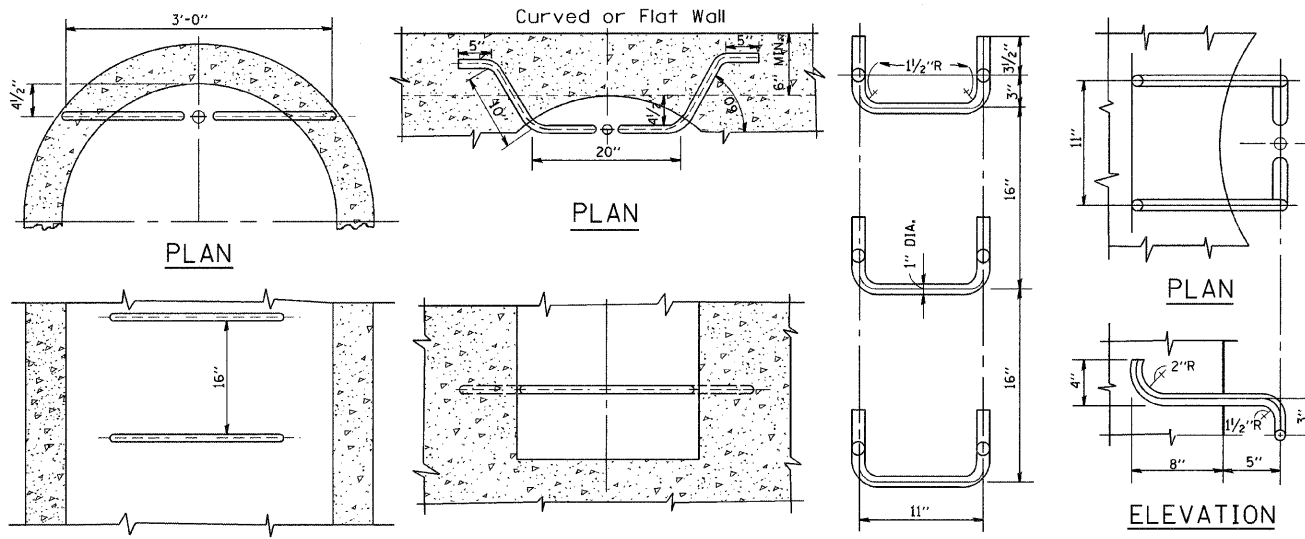
ILLINOIS DEPARTMENT OF TRANSPORTATION

CITY OF CHICAGO  
CATCH BASIN, INLET AND  
MANHOLE DETAILS

SCALE: VERT. NONE  
HORIZ.

DRAWN BY  
CHECKED BY

REVISIONS	
NAME	DATE
M. GOMEZ	01/25/01



ELEVATION TYPE X

SCALE: 1"=1'-0"

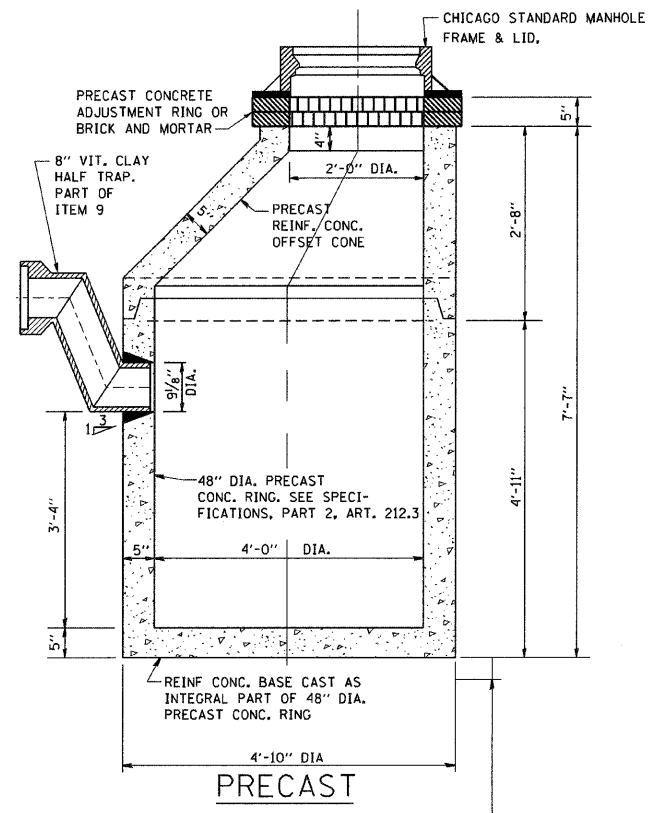
ELEVATION TYPE Y

SCALE: 1"=1'-0"

SPACING HANDHOLD-TYPE Z RUNG

Scale: 1 1/2"=1'-0"

ALL LADDER RUNGS SHALL BE ALUMINUM OR GALVANIZED WROUGHT IRON AS SPECIFIED IN THE SPECIFICATIONS, PART 2, ARTICLE 214.2. RUNGS SHALL BE 1" DIAMETER OR OF A SHAPE HAVING AN EQUIVALENT CROSS-SECTIONAL AREA.



PRECAST

NOTE: 6" MINIMUM GRANULAR EMBEDMENT UNDER ALL CATCH BASINS

**STANDARD CATCH BASINS**

SCALE: 3/4"=1'-0"  
ITEM 9