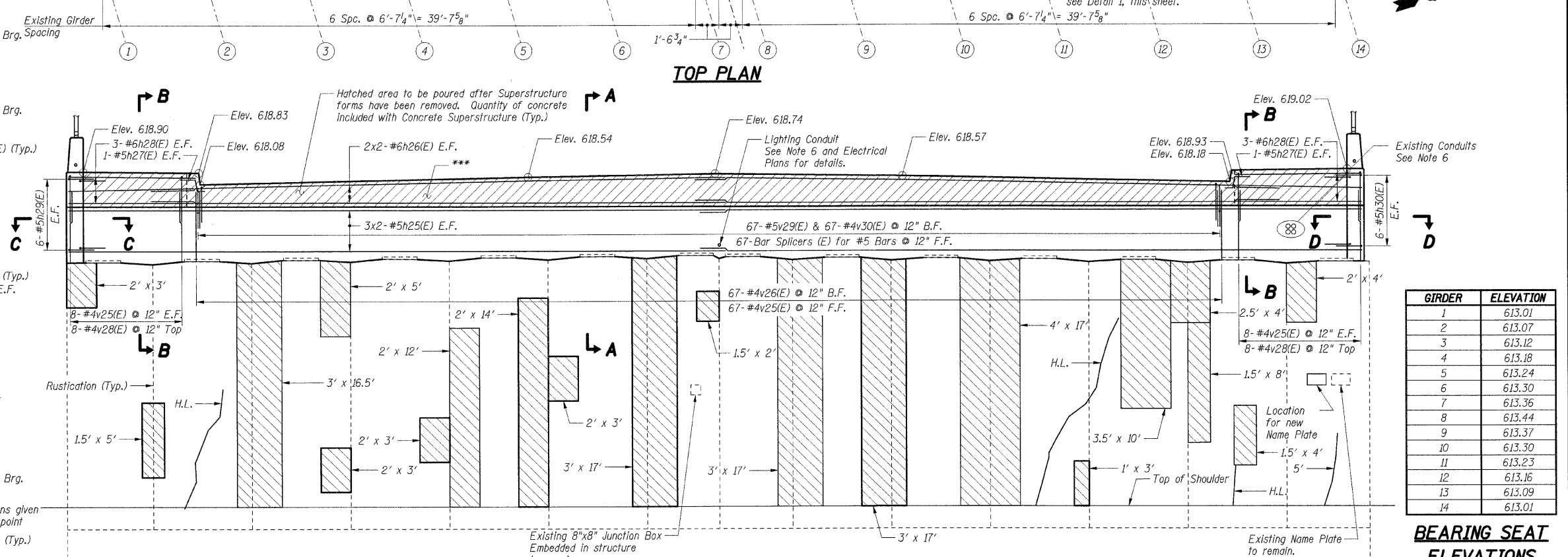
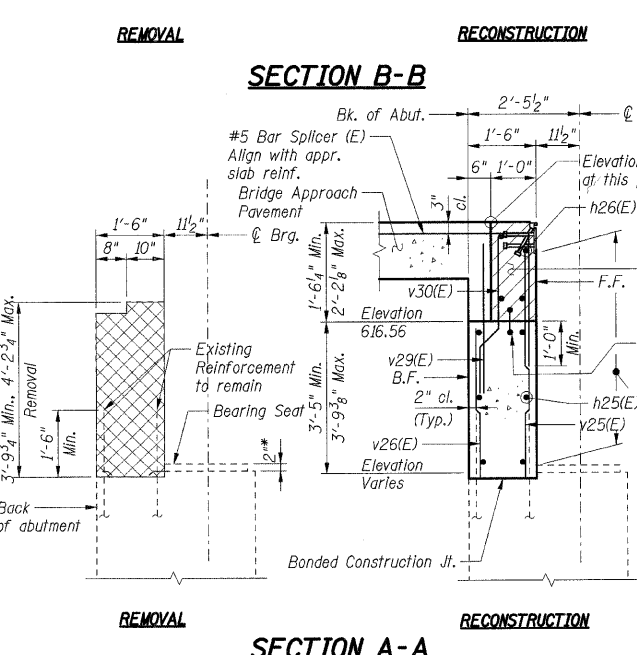
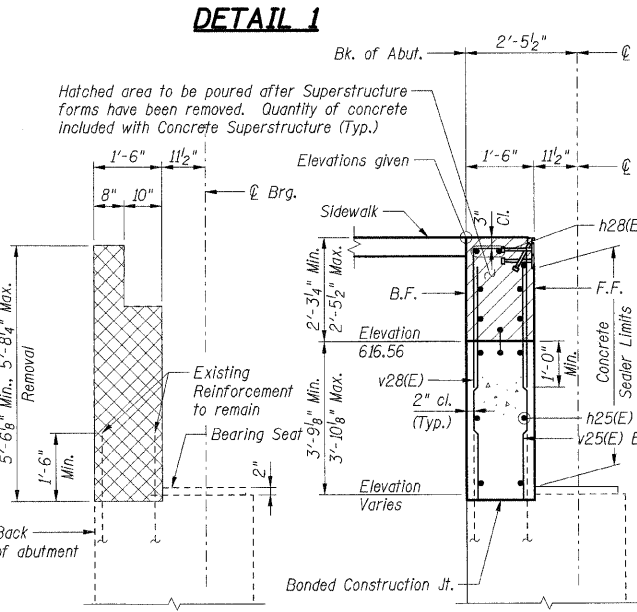
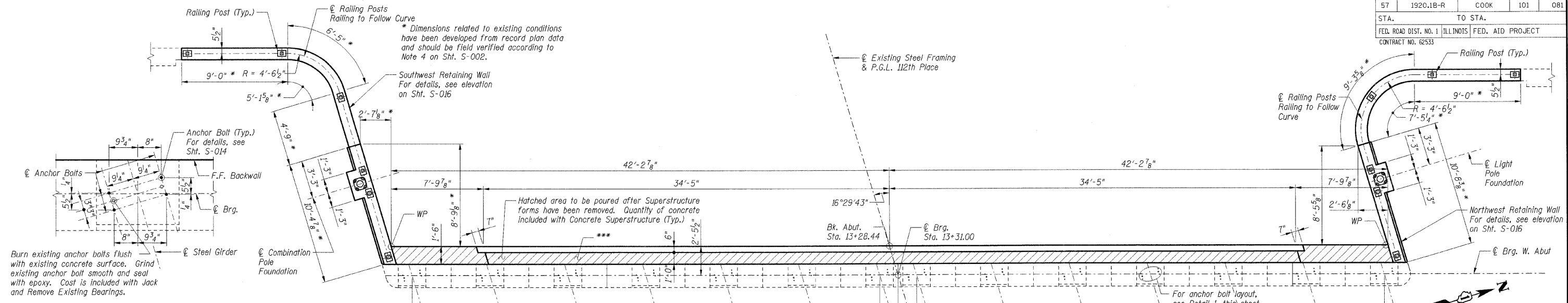


F.A.I. SECTION	COUNTY	TOTAL SHEETS	SHEET NO.
57 1920.1B-R	COOK	101	081
STA.	TO STA.		
FED. ROAD DIST. NO. 1	ILLINOIS	FED. AID PROJECT	
CONTRACT NO. 62533			



GIRDER	ELEVATION
1	613.01
2	613.07
3	613.12
4	613.18
5	613.24
6	613.30
7	613.36
8	613.44
9	613.37
10	613.30
11	613.23
12	613.16
13	613.09
14	613.01

BEARING SEAT ELEVATIONS
(Elevations based off record plans. For information only.)

- Notes:**
- Work this sheet with Sht. S-016.
 - Reinforcement bars designated (E) shall be epoxy coated.
 - Bars indicated thus 30 x 2-#5 etc. indicates 30 lines of bars with 2 lengths per line.
 - All edges shall have standard 3/4" chamfers except as noted.
 - E.F. indicates Each Face, F.F. indicates Front Face, B.F. indicates Back Face.
 - Cost of all sleeves, grout and associated work required for extending conduit through backwall shall be included with Concrete Structures.
 - Existing reinforcement bars to remain shall be cleaned and incorporated into new construction with a minimum projection length as shown. Bars with insufficient projection or with 10% or more section loss shall be removed flush to the concrete removal line and replaced in kind by drilling and grouting new bars of equivalent size, the cost of which is included with Concrete Removal.
 - For bar splicer details, see Sht. S-022.
 - Crack widths are 1/16" unless otherwise noted.
 - Girders shall be supported during concrete repairs. Cost shall be included with Jack and Remove Existing Bearings.

LAP LENGTHS

Bar Size	Min. Lap
#4	1'-11"
#5	2'-5"
#6	2'-10"

- LEGEND**
- Concrete Removal
 - Structural Repair of Concrete (Depth Equal to or Less Than 5")
 - Epoxy Crack Injection
 - Hairline Crack - Not to be Sealed

SHT. S-015

REVISIONS	NAME	DATE

ILLINOIS DEPARTMENT OF TRANSPORTATION
F.A.I. ROUTE 57 (INTERSTATE 57)
112TH PLACE BRIDGE DECK REPLACEMENT
112TH PLACE OVER I-57
SN 016-0988 STA. 546+15.56
COOK COUNTY

WEST ABUTMENT

DATE: 01/16/09

DRAWN BY: TMH
CHECKED BY: JLR

TENG
TENG & ASSOCIATES, INC.
ENGINEERS/ARCHITECTS/PLANNERS
205 N. MICHIGAN AVE., CHICAGO, IL 60601
TELEPHONE: 312.663.0000