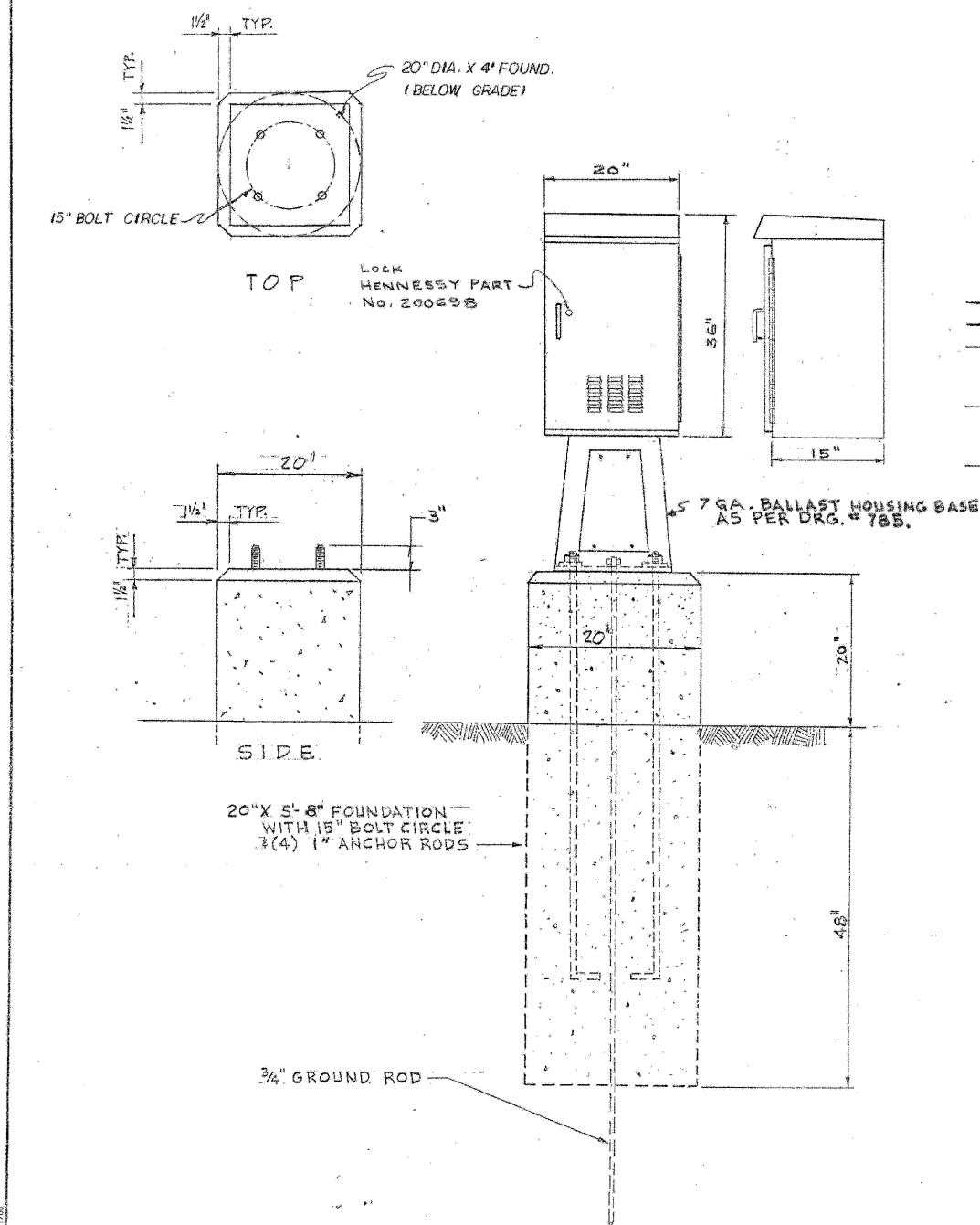


| F.A.I. RTE. | SECTION | COUNTY | TOTAL SHEETS | SHEET NO. |
|---|-----------|---------|--------------|-----------|
| 57 | 1920.1B-R | COOK | 101 | 052 |
| STA. | | TO STA. | | |
| FED. ROAD DIST. NO. 1 ILLINOIS FED. AID PROJECT | | | | |
| CONTRACT NO. 62533 | | | | |

| CODE | PRG. | MATERIAL | SIZE | QUANT. |
|--------------|------|--------------------|-----------------|--------|
| 05-5082-8324 | | FIBER FORM | 20" ϕ | 4' |
| 05-3267-2940 | | CONCRETE | CU. YD. | 0.7 |
| 37-818C-0236 | 811 | ANCHOR ROD | 1" x 60" | 4 |
| 09-7796-9200 | | GROUND ROD | 3/4" x 10' | 1 |
| 09-2636-3240 | | CLAMP, GROUND ROD | 3/4" | 1 |
| | | CABINET ALUMINUM | 36" x 20" x 15" | 1 |
| 37-2130-4280 | 785 | BALLAST HOUSING BS | 1'-4" x 1'-8" | 1 |



NOTE:

HENNESSY "36" CABINET #212373 OR U.L. APPROVED EQUIVALENT.

- SEE DRAWING # 883 FOR ELECTRICAL PANEL DETAILS.
- SEE DRAWINGS # 862 & 864 FOR WIRING DIAGRAM.
- DRILL (4) 1/2 DIA. HOLES IN BOTTOM OF CABINET & TOP OF BALLAST HOUSING BASE. BOLT CABINET TO B.H.B. USING (4) 3/8" x 2 1/2" BOLTS.
- OPENINGS IN BOTTOM OF CABINET & TOP OF B.H.B. MAY BE ENLARGED TO A MAX. OF 3" x 10" TO FACILITATE ADDITIONAL CABLE.
- NUMBER & SIZE OF CONDUITS TO BE SHOWN ON CONSTRUCTION DRGS.

| | |
|---|--------------------------------------|
| A 4-26-93 CAB. NO. CHANGED - CITY NAME REMOVED | |
| DATE | REVISION |
| 100 AMP. BASE MOUNTED STREET LIGHT CONTROLLER | |
| CITY OF CHICAGO DEPT. OF STREETS AND SANITATION BUREAU OF ELECTRICITY DIVISION OF ELECTRICAL ENGINEERING | |
| DRAFTSMAN: W. TROMPKA | CHIEF DRAFTSMAN: C. R. |
| SUPERVISING ENGINEER: D. Carlson | ELEC. DESIGN ENGR. D. W. G. I. G. |
| ENGINEER OF ELECTRICITY: A. Dukelsky | GEN'L. SUPT. OF ELECTRICITY |
| DEPUTY COMMISSIONER: D. Carlson | 876 |
| SIZE: 16 21 | SCALE: 1" = 1'-0" DATE: |

SR19. X

ES-14

| REVISIONS | |
|-----------|------|
| NAME | DATE |
| | |
| | |
| | |
| | |
| | |
| | |
| | |
| | |
| | |
| | |

ILLINOIS DEPARTMENT OF TRANSPORTATION
112TH PLACE OVER
F.A.I. ROUTE 57 (INTERSTATE 57)
ELECTRICAL STANDARD DETAILS

SCALE: DRAWN BY: N/A
DATE: 01/16/09 CHECKED BY: N/A

TENG

TENG & ASSOCIATES, INC.
ENGINEERS/ARCHITECTS/PLANNERS
205 N. MICHIGAN AVE., CHICAGO, IL 60601
TELEPHONE: 312/675-0000

NORTH ST. BOPBER.COM
 1-16-2009, 13:03:07
 I:\DOCUMENTS\150806\ACTUAL\DRAWING\H008\W5108N
 1 2 3 4 5 6 7 8 9 10 11 12 13 14 15 16 17 18 19 20 21 22 23 24 25 26 27 28 29 30 31 32 33 34 35 36 37 38 39 40 41 42 43 44 45 46 47 48 49 50 51 52 53 54 55 56 57 58 59 60 61 62 63
 RECHTER
 556575859 6061 62 63