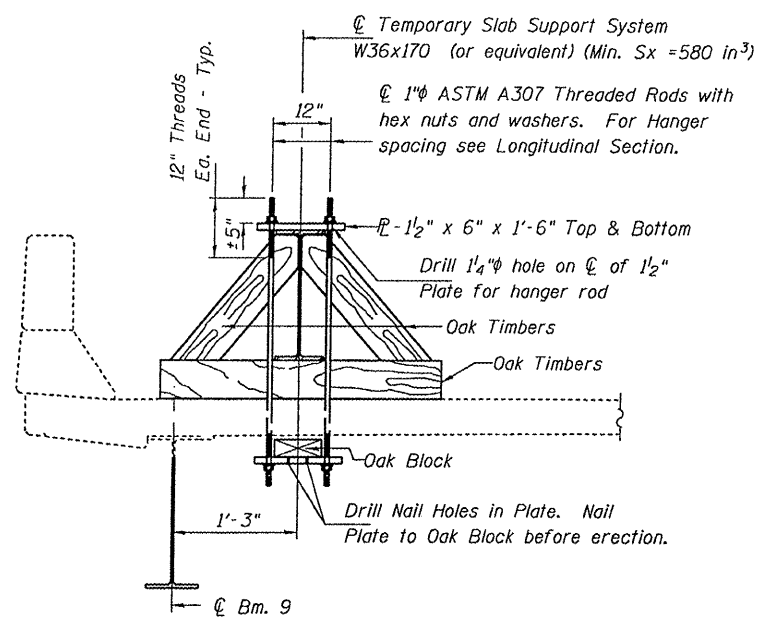
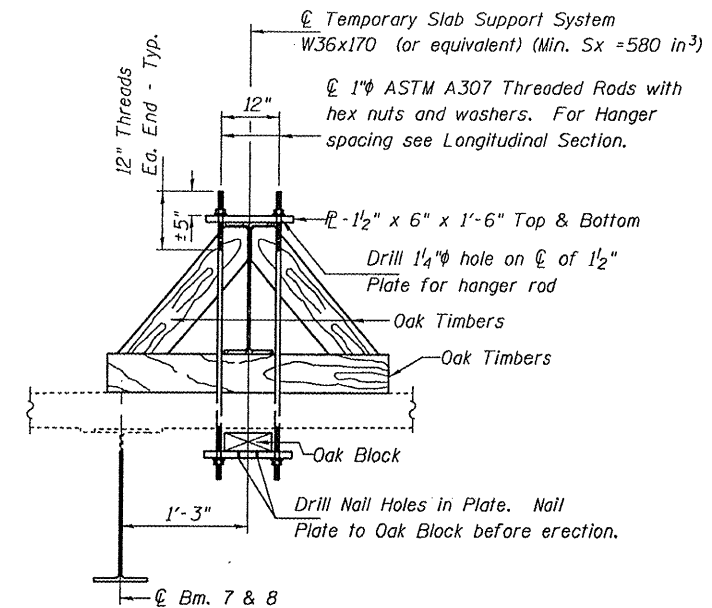


STATE OF ILLINOIS
DEPARTMENT OF TRANSPORTATION



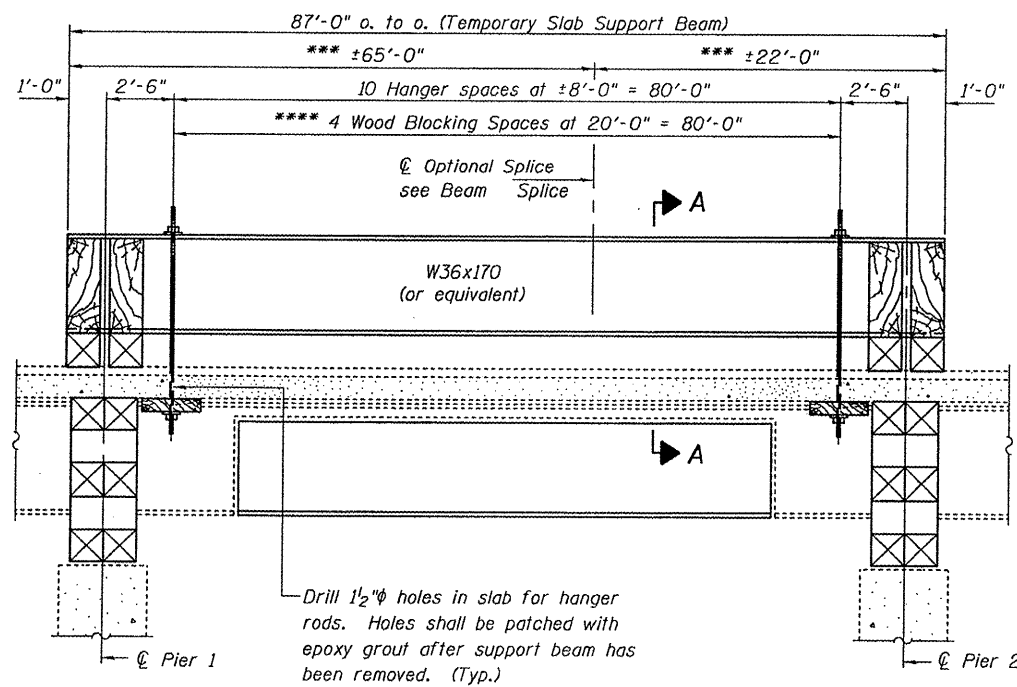
SECTION A-A
BEAM 9



SECTION A-A
BEAMS 7 & 8

If work on adjacent beam is to be done simultaneously, each beam line will be required to have it's own Temporary Slab Support System.

***These dimensions may vary for available beams in stock.
 ****Wood blocking between piers to be placed after support
 beam deflects under its own weight.



LONGITUDINAL SECTION
SUGGESTED TEMPORARY SLAB SUPPORT SYSTEM

| | |
|----------|------------------|
| DESIGNED | V.H.V. |
| CHECKED | A.T.H. |
| DRAWN | Drew Christopher |
| CHECKED | V.H.V. A.T.H. |

March 9, 2009
 EXAMINED *Carl Krueger*
 ENGINEER OF STRUCTURAL SERVICES
 PASSED *Ralph E. Anderson*
 ENGINEER OF BRIDGES AND STRUCTURES

DETAILS

| | | | | | |
|-------------|---------------------|---------------------------|--------------------|--------------|-----------|
| SHEET NO. 2 | F.A. RTE. | SECTION | COUNTY | TOTAL SHEETS | SHEET NO. |
| | 55 | 0101-601 HB-I | Cook | 13 | 6 |
| 3 SHEETS | SN 016-0001 | | CONTRACT NO. 60G06 | | |
| | FED. ROAD DIST. NO. | ILLINOIS FED. AID PROJECT | | | |