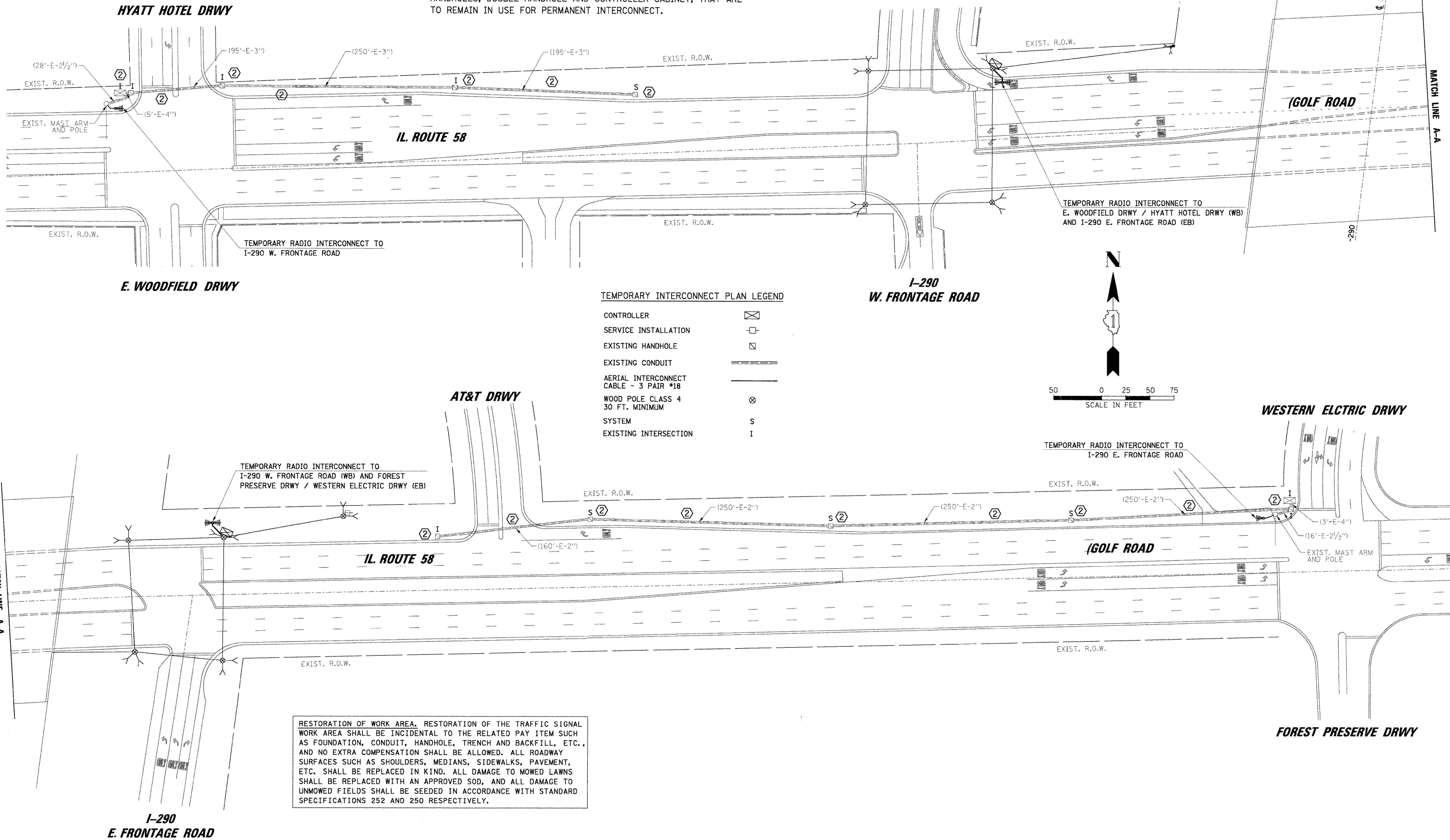


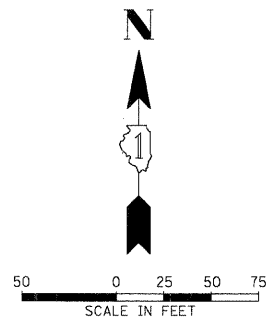
CONSTRUCTION NOTES:

- ① EXISTING INTERCONNECT CONDUIT AND SYSTEM HANDHOLES SHOWN ARE TO BE UTILIZED FOR PERMANENT INTERCONNECT.
- ② REMOVE EXISTING FIBER AND TRACER CABLES FROM EXISTING CONDUITS, HANDHOLES, DOUBLE HANDHOLE AND CONTROLLER CABINET, THAT ARE TO REMAIN IN USE FOR PERMANENT INTERCONNECT.



TEMPORARY INTERCONNECT PLAN LEGEND

CONTROLLER	☒
SERVICE INSTALLATION	☐
EXISTING HANDHOLE	☑
EXISTING CONDUIT	▬
AERIAL INTERCONNECT CABLE - 3 PAIR #18	▬
WOOD POLE CLASS 4 30 FT. MINIMUM	⊗
SYSTEM	S
EXISTING INTERSECTION	I



RESTORATION OF WORK AREA. RESTORATION OF THE TRAFFIC SIGNAL WORK AREA SHALL BE INCIDENTAL TO THE RELATED PAY ITEM SUCH AS FOUNDATION, CONDUIT, HANDHOLE, TRENCH AND BACKFILL, ETC., AND NO EXTRA COMPENSATION SHALL BE ALLOWED. ALL ROADWAY SURFACES SUCH AS SHOULDERS, MEDIANS, SIDEWALKS, PAVEMENT, ETC. SHALL BE REPLACED IN KIND. ALL DAMAGE TO MOWED LAWNS SHALL BE REPLACED WITH AN APPROVED SOD, AND ALL DAMAGE TO UNMOWED FIELDS SHALL BE SEEDED IN ACCORDANCE WITH STANDARD SPECIFICATIONS 252 AND 250 RESPECTIVELY.

DATE	BY	SURVEYED	PLANNED
DATE	BY	NOTED	NOTED
DATE	BY	NOTED	NOTED
DATE	BY	NOTED	NOTED

CHRISTOPHER B. BURKE ENGINEERING LTD.
 8575 West Higgins Road, Suite 600
 Rosemont, Illinois 60018
 (847) 923-0500

FILE NAME : ...\\Traffic\INT-Tmp\ILEB.dgn
 USER NAME = FPAICONE
 DESIGNED - ABR
 DRAWN - FPB / FCP
 CHECKED - MJT
 DATE - 1/26/2009

DESIGNED - ABR	REVISED -
DRAWN - FPB / FCP	REVISED -
CHECKED - MJT	REVISED -
DATE - 1/26/2009	REVISED -

**STATE OF ILLINOIS
 DEPARTMENT OF TRANSPORTATION**

**TEMPORARY INTERCONNECT PLAN
 IL ROUTE 58 (GOLF ROAD) FROM E WOODFIELD DRWY / HYATT HOTEL DRWY
 TO FOREST PRESERVE DRWY / WESTERN ELECTRIC DRWY**

F.A.P. RTE.	SECTION	COUNTY	TOTAL SHEETS	SHEET NO.
VAR	2009-008-TS	COOK	41	31
CONTRACT NO. 60G04				
FED. ROAD DIST. NO.	ILLINOIS FED. AID PROJECT			

SCALE: 1"=50' SHEET NO. OF SHEETS STA. TO STA.