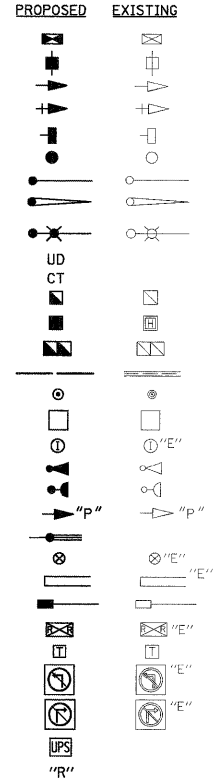


PROFILE SURVEYED BY DATE
 GRADES CHECKED
 B.M. NOTED
 STRUCTURE NOTATIONS CHRD
 NO. 1/2008/040/Task 5- EE Northwest Cook Safety/Task V - IL58 @ I-290 W Frontage/IL58 @ I-290W.dgn
 PLAN SURVEYED BY DATE
 PLOTTED BY DATE
 CHECKED BY DATE
 RT. OF WAY CHECKED
 NO. 1/2008/040/Task 5- EE Northwest Cook Safety/Task V - IL58 @ I-290 W Frontage/IL58 @ I-290W.dgn
 NO. 1/2008/040/Task 5- EE Northwest Cook Safety/Task V - IL58 @ I-290 W Frontage/IL58 @ I-290W.dgn

CHRISTOPHER B. BURKE ENGINEERING LTD.
 9575 West Higgins Road, Suite 600
 Rosemont, Illinois 60018
 (847) 823-0500

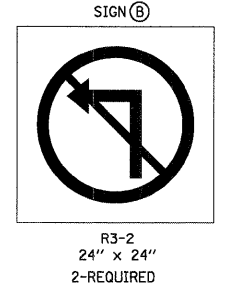
TRAFFIC SIGNAL LEGEND

- CONTROLLER
 SERVICE INSTALLATION
 SIGNAL HEAD
 SIGNAL HEAD WITH BACKPLATE
 SIGNAL HEAD, PEDESTRIAN
 SIGNAL POST
 MAST ARM ASSEMBLY AND POLE, STEEL
 MAST ARM ASSEMBLY AND POLE, ALUMINUM
 COMBINATION MAST ARM ASSEMBLY AND POLE, STEEL WITH LUMINAIRE
 UNIT DUCT
 COMMON TRENCH
 HANDHOLE
 HEAVY DUTY HANDHOLE
 DOUBLE HANDHOLE
 G.S. CONDUIT IN TRENCH (T) OR PUSHED (P)
 PEDESTRIAN PUSHBUTTON DETECTOR
 DETECTOR LOOP
 CAST IRON JUNCTION BOX
 EMERGENCY VEHICLE LIGHT DETECTOR
 CONFIRMATION BEACON
 SIGNAL HEAD OPTICALLY PROGRAMMED
 CONDUIT SPLICE
 WOOD POLE
 RACEWAY FOR MAGNETIC DETECTOR, TYPE I OR TYPE II
 VEHICLE DETECTOR, NON COMPENSATED MAGNETIC TYPE
 RAILROAD CONTROL CABINET
 TELEPHONE CONNECTION
 ILLUMINATED SIGN "NO LEFT TURN"
 ILLUMINATED SIGN "NO RIGHT TURN"
 UNINTERRUPTIBLE POWER SUPPLY
 RELOCATED

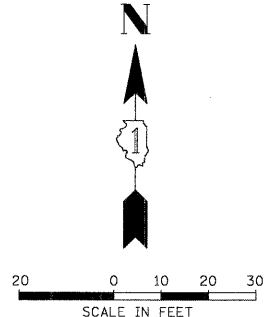
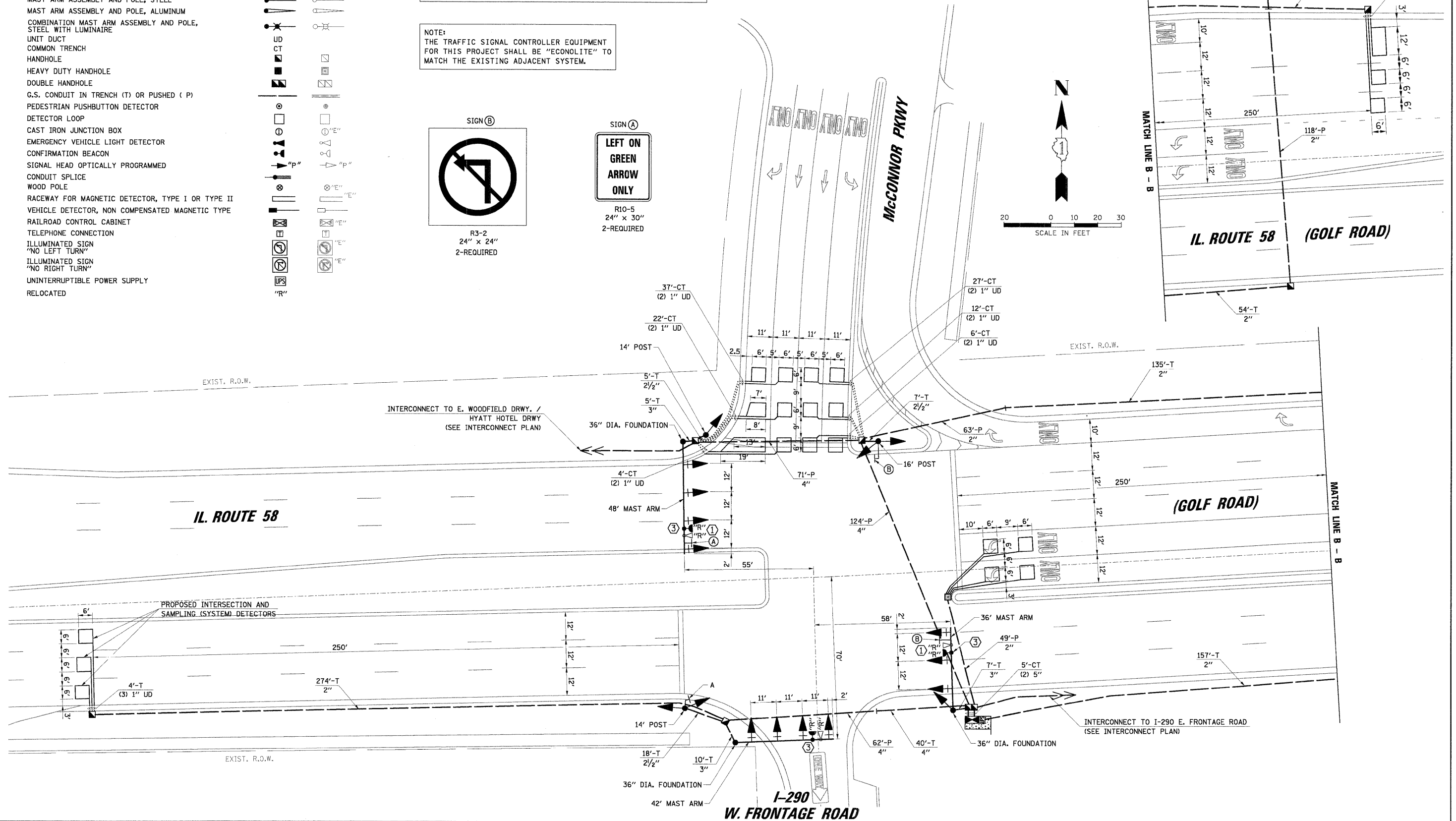


RESTORATION OF WORK AREA. RESTORATION OF THE TRAFFIC SIGNAL WORK AREA SHALL BE INCIDENTAL TO THE RELATED PAY ITEM SUCH AS FOUNDATION, CONDUIT, HANDHOLE, TRENCH AND BACKFILL, ETC., AND NO EXTRA COMPENSATION SHALL BE ALLOWED. ALL ROADWAY SURFACES SUCH AS SHOULDERS, MEDIANS, SIDEWALKS, PAVEMENT, ETC. SHALL BE REPLACED IN KIND. ALL DAMAGE TO MOWED LAWNS SHALL BE REPLACED WITH AN APPROVED SOD, AND ALL DAMAGE TO UNMOWED FIELDS SHALL BE SEED IN ACCORDANCE WITH STANDARD SPECIFICATIONS 252 AND 250 RESPECTIVELY.

NOTE:
 THE TRAFFIC SIGNAL CONTROLLER EQUIPMENT FOR THIS PROJECT SHALL BE "ECONOLITE" TO MATCH THE EXISTING ADJACENT SYSTEM.



- CONSTRUCTION NOTES:
- RELOCATE EXISTING LIGHT DETECTORS AND CONFIRMATION BEACONS TO THE NEW MAST ARMS.
 - RELOCATE EXISTING LIGHT DETECTOR AMPLIFIER TO NEW CONTROLLER CABINET.
 - ALL EXISTING CONFIRMATION BEACONS SHALL BE RETROFITTED WITH LED INDICATIONS. THIS WORK SHALL BE INCIDENTAL TO THE PAY ITEM: UNINTERRUPTIBLE POWER SUPPLY.



FILE NAME = .../TSD_IL58 @ I-290W.dgn	USER NAME = FPAICONE	DESIGNED - ABR	REVISED -	STATE OF ILLINOIS DEPARTMENT OF TRANSPORTATION	TRAFFIC SIGNAL MODERNIZATION PLAN IL. ROUTE 58 (GOLF ROAD) AND I-290 W. FRONTAGE ROAD / MCCONNOR PKWY			F.A.P. RTE. VAR	SECTION 2009-008-TS	COUNTY COOK	TOTAL SHEETS 41	SHEET NO. 24
	PLOT SCALE = 20'	DRAWN - FPB / FCP	REVISED -		SCALE: 1" = 20'	SHEET NO.	OF SHEETS	STA.	TO STA.	CONTRACT NO. 60G04		
	DATE = 1/26/2009	CHECKED - MJT	REVISED -							ILLINOIS FED. AID PROJECT		
		DATE -	REVISED -									