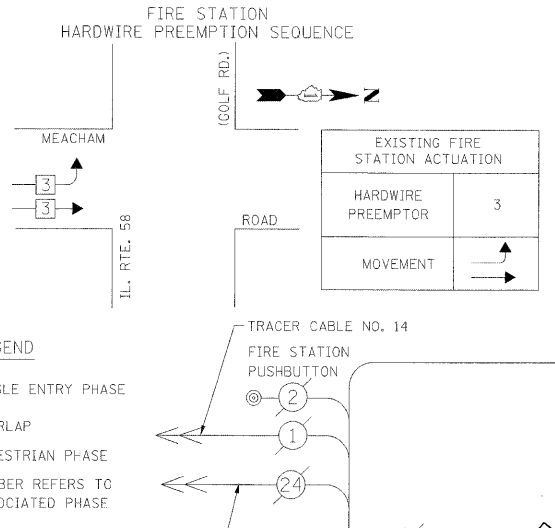
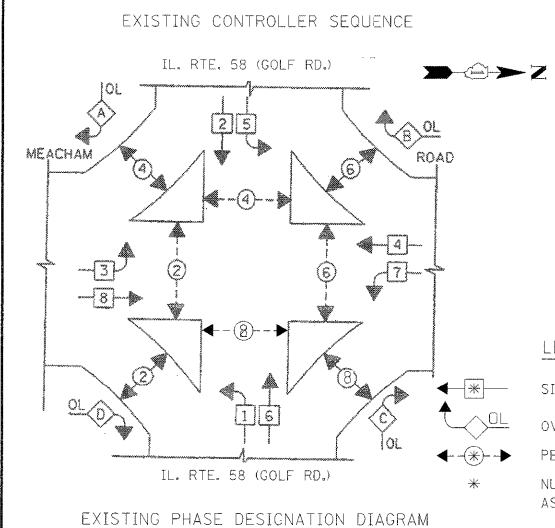


SURVEYED BY: DATE: _____
 PLOTTED BY: DATE: _____
 CHECKED BY: DATE: _____
 NOTE BOOK NO.: _____
 FILE NAME: ...VCAB_IL58 @ Meacham.dgn

CHRISTOPHER B. BURKE ENGINEERING LTD.
 9575 West Higgins Road, Suite 600
 Rosemont, Illinois 60018
 (847) 823-0500

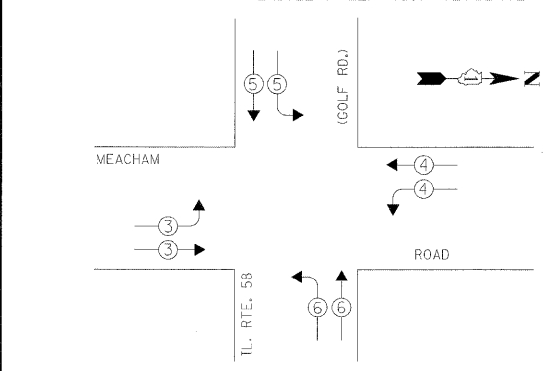
SURVEYED BY: DATE: _____
 PLOTTED BY: DATE: _____
 CHECKED BY: DATE: _____
 NOTE BOOK NO.: _____
 FILE NAME: ...VCAB_IL58 @ Meacham.dgn



NOTE:
 PUSHBUTTON "A" SHALL PLACE A CALL IN PHASES 2 AND 4.
 PUSHBUTTON "B" SHALL PLACE A CALL IN PHASES 4 AND 6.
 PUSHBUTTON "C" SHALL PLACE A CALL IN PHASES 6 AND 8.
 PUSHBUTTON "D" SHALL PLACE A CALL IN PHASES 2 AND 8.

EXISTING PHASE DESIGNATION DIAGRAM

OVERLAP LETTER	PERMISSIVE PHASE	PROTECTED PHASE
A	2	3
B	4	5
C	6	7
D	8	1



EXISTING EMERGENCY VEHICLE PREEMPTORS

EMERGENCY VEHICLE PREEMPTOR	3	4	5	6
MOVEMENT	→	←	↓	↑

I.D.O.T. TRAFFIC SIGNAL INSTALLATION ELECTRICAL SERVICE REQUIREMENTS

TYPE	NO. OF LAMPS	WATTAGE X INCAND.	LED %	X % OPERATION	TOTAL WATTAGE
SIGNAL (RED)	24	17	0.50		204.00
(YELLOW)	24	25	0.25		150.00
(GREEN)	24	15	0.25		90.00
ARROW	16	12	0.10		19.20
PED. SIGNAL	16	25	1.00		400.00
CONTROLLER	1	100	1.00		100.00
ILLUM. SIGN	-	252	0.05		-
VIDEO SYSTEM	-	150	1.00		-
FLASHER			0.50		
ENERGY COSTS TO:					TOTAL = 963.20

ILLINOIS DEPARTMENT OF TRANSPORTATION
 DIVISION OF HIGHWAY/DISTRICT 1
 201 WEST CENTER COURT/SCHAUMBURG, ILLINOIS 60196-1096
 ENERGY SUPPLY: CONTACT: MARK GLOECK
 PHONE: (630) 691-4529
 COMPANY: COMED

FOUNDATION (DEPTH)	FT. (m)	CABLE SLACK	FT. (m)	VERTICAL	FT. (m)
TYPE A - POST	4 (1.2)	HANDHOLE	6.5 (2.0)	ALL FOUNDATIONS	3.5 (1.0)
C - CONTROLLER W/ UPS	4 (1.2)	DOUBLE HANDHOLE	13 (4.0)	MAST ARM (L) POLE	20'+L-2=
D - CONTROLLER	4 (1.2)	SIGNAL POST	2 (1.0)	(6m+L-0.6m)=	
E - M. ARM POLE		CONTROLLER CAB.	1 (0.5)	BRACKET MOUNTED	13 (4.0)
30" (750mm)	15 (4.6)	FIBER OPTIC	13 (4.0)	PED. PUSHBUTTON	6 (1.8)
36" (900mm)	15 (4.6)	ELECTRIC SERVICE	1 (0.5)	ELECTRIC SERVICE	13.5 (4.1)
42" (1050mm)	25 (7.6)	GROUND CABLE	1 (0.5)	SERVICE TO GROUND	13.5 (4.1)
				POST MOUNTED	6 (1.8)

CONSTRUCTION NOTES:
 ① INSTALL UNINTERRUPTIBLE POWER SUPPLY (UPS).
 ② ALL EXISTING CONFIRMATION BEACONS SHALL BE RETROFITTED WITH LED INDICATIONS, THIS WORK SHALL BE INCIDENTAL TO THE PAY ITEM: UNINTERRUPTIBLE POWER SUPPLY.
 ③ ALL CABINET MODIFICATIONS AND/OR LOAD SWITCH REPLACEMENTS REQUIRED FOR PROPER OPERATION OF THE LED SIGNAL AND LED CONFIRMATION BEACON INDICATIONS TO THE SATISFACTION OF THE ENGINEER SHALL BE INCIDENTAL TO THE PAY ITEM: UNINTERRUPTIBLE POWER SUPPLY.

CABLE PLAN LEGEND

EXISTING	PROPOSED	DESCRIPTION
(G)	(G)	8" (200mm) TRAFFIC SIGNAL SECTION
(R)	(R)	12" (300mm) TRAFFIC SIGNAL SECTION
(W)	(W)	12" (300mm) PEDESTRIAN SIGNAL SECTION
(C)	(C)	12" (300mm) PEDESTRIAN SIGNAL SECTION WITH COUNTDOWN TIMER
(S)	(S)	CONTROLLER CABINET SERVICE INSTALLATION
(T)	(T)	TELEPHONE INSTALLATION
(V)	(V)	VEHICLE DETECTOR, INDUCTION LOOP
(M)	(M)	MAGNETIC DETECTOR
(E)	(E)	EMERGENCY VEHICLE LIGHT DETECTOR
(B)	(B)	CONFIRMATION BEACON
(P)	(P)	PUSHBUTTON DETECTOR
(2)	(2)	DENOTES NUMBER OF CONDUCTORS. ALL CABLE NO. 14 EXCEPT AS INDICATED. ALL LOOP DETECTOR CABLE TO BE SHIELDED.
(1)	(1)	GROUND CABLE IN CONDUIT NO. 6 SOLID COPPER (GREEN)
(24)	(24)	FIBER OPTIC CABLE IN CONDUIT NO. 62.5/125 2-MM12F SM12F
(R)	(R)	SIGNAL FACE WITH BACKPLATE
(Y)	(Y)	"P" INDICATES PROGRAMMED HEAD.
(G)	(G)	RAILROAD CONTROL CABINET
(N)	(N)	ILLUMINATED SIGN "NO LEFT TURN"
(R)	(R)	ILLUMINATED SIGN "NO RIGHT TURN"
(H/C)	(H/C)	GROUND ROD AT HANDHOLE (H), DOUBLE HANDHOLE (H), OR CONTROLLER (C)
(P)	(P)	GROUND ROD AT POST (P) OR MAST ARM POLE (MA)
(S)	(S)	GROUND ROD AT ELECTRIC SERVICE INSTALLATION
(UPS)	(UPS)	UNINTERRUPTIBLE POWER SUPPLY

RESTORATION OF WORK AREA. RESTORATION OF THE TRAFFIC SIGNAL WORK AREA SHALL BE INCIDENTAL TO THE RELATED PAY ITEM SUCH AS FOUNDATION, CONDUIT, HANDHOLE, TRENCH AND BACKFILL, ETC., AND NO EXTRA COMPENSATION SHALL BE ALLOWED. ALL ROADWAY SURFACES SUCH AS SHOULDERS, MEDIANS, SIDEWALKS, PAVEMENT, ETC. SHALL BE REPLACED IN KIND. ALL DAMAGE TO MOWED LAWNS SHALL BE REPLACED WITH AN APPROVED SOD, AND ALL DAMAGE TO UNMOWED FIELDS SHALL BE SEEDED IN ACCORDANCE WITH STANDARD SPECIFICATIONS 252 AND 250 RESPECTIVELY.

NOTE: THE TRAFFIC SIGNAL CONTROLLER EQUIPMENT FOR THIS PROJECT SHALL BE "ECONOLITE" TO MATCH THE EXISTING ADJACENT SYSTEM.

SCHEDULE OF QUANTITIES

ITEM	UNIT	TOTAL
MAINTENANCE OF EXISTING TRAFFIC SIGNAL INSTALLATION	EACH	1
PEDESTRIAN SIGNAL HEAD, LED, 1-FACE, BRACKET MOUNTED WITH COUNTDOWN TIMER	EACH	4
PEDESTRIAN SIGNAL HEAD, LED, 3-FACE, BRACKET MOUNTED WITH COUNTDOWN TIMER	EACH	4
PEDESTRIAN SIGNAL HEAD, LED, 1-FACE, 1-3 SECTION, 2-5 SECTION BRACKET MOUNTED, RETROFIT	EACH	8
REMOVE EXISTING TRAFFIC SIGNAL EQUIPMENT	EACH	1
SIGNAL HEAD, LED, 1-FACE, 3-SECTION, MAST-ARM MOUNTED, RETROFIT	EACH	12
SIGNAL HEAD, LED, 3-FACE, 1-3 SECTION, 2-5 SECTION BRACKET MOUNTED, RETROFIT	EACH	4
UNINTERRUPTIBLE POWER SUPPLY	EACH	1