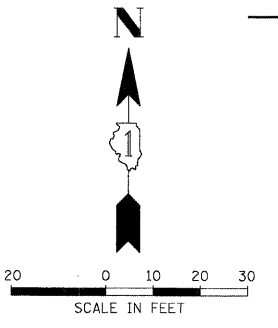


DATE _____ BY _____
 SURVEYED _____ CHECKED _____
 PLOTTER _____
 DATE _____ BY _____
 SURVEYED _____ CHECKED _____
 PLOTTER _____

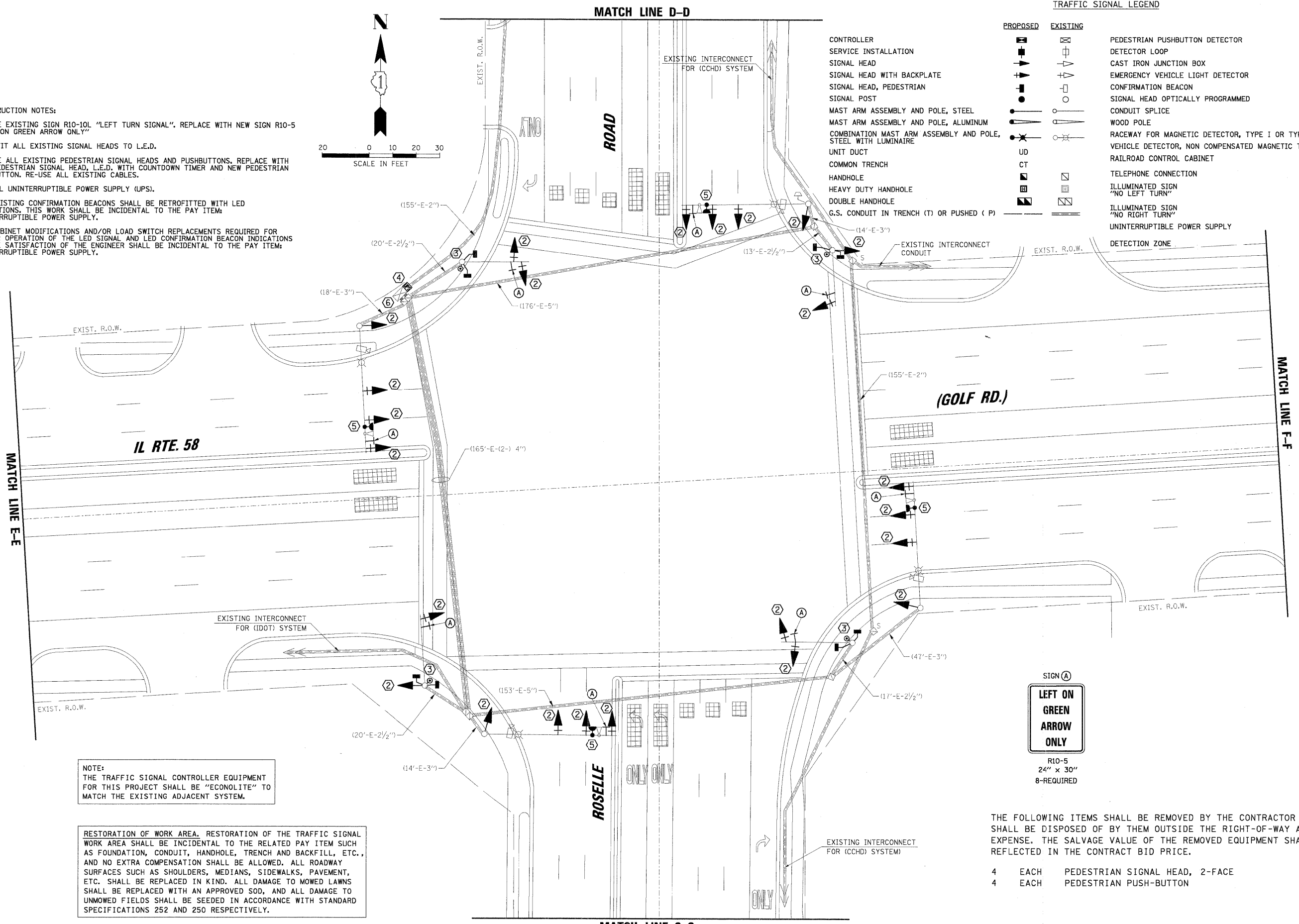
CHRISTOPHER B. BURKE ENGINEERING LTD.
 3575 West Higgins Road, Suite 600
 Rosemont, Illinois 60018
 (847) 823-0500

DATE _____ BY _____
 SURVEYED _____ CHECKED _____
 PLOTTER _____
 DATE _____ BY _____
 SURVEYED _____ CHECKED _____
 PLOTTER _____

- CONSTRUCTION NOTES:
- REMOVE EXISTING SIGN R10-10L "LEFT TURN SIGNAL". REPLACE WITH NEW SIGN R10-5 "LEFT ON GREEN ARROW ONLY"
 - RETROFIT ALL EXISTING SIGNAL HEADS TO L.E.D.
 - REMOVE ALL EXISTING PEDESTRIAN SIGNAL HEADS AND PUSHBUTTONS. REPLACE WITH NEW PEDESTRIAN SIGNAL HEAD, L.E.D. WITH COUNTDOWN TIMER AND NEW PEDESTRIAN PUSHBUTTON. RE-USE ALL EXISTING CABLES.
 - INSTALL UNINTERRUPTIBLE POWER SUPPLY (UPS).
 - ALL EXISTING CONFIRMATION BEACONS SHALL BE RETROFITTED WITH LED INDICATIONS. THIS WORK SHALL BE INCIDENTAL TO THE PAY ITEM: UNINTERRUPTIBLE POWER SUPPLY.
 - ALL CABINET MODIFICATIONS AND/OR LOAD SWITCH REPLACEMENTS REQUIRED FOR PROPER OPERATION OF THE LED SIGNAL AND LED CONFIRMATION BEACON INDICATIONS TO THE SATISFACTION OF THE ENGINEER SHALL BE INCIDENTAL TO THE PAY ITEM: UNINTERRUPTIBLE POWER SUPPLY.



| TRAFFIC SIGNAL LEGEND | |
|--|--|
| PROPOSED | EXISTING |
| CONTROLLER | CONTROLLER |
| SERVICE INSTALLATION | SERVICE INSTALLATION |
| SIGNAL HEAD | SIGNAL HEAD |
| SIGNAL HEAD WITH BACKPLATE | SIGNAL HEAD WITH BACKPLATE |
| SIGNAL HEAD, PEDESTRIAN | SIGNAL HEAD, PEDESTRIAN |
| SIGNAL POST | SIGNAL POST |
| MAST ARM ASSEMBLY AND POLE, STEEL | MAST ARM ASSEMBLY AND POLE, STEEL |
| MAST ARM ASSEMBLY AND POLE, ALUMINUM | MAST ARM ASSEMBLY AND POLE, ALUMINUM |
| COMBINATION MAST ARM ASSEMBLY AND POLE, STEEL WITH LUMINAIRE | COMBINATION MAST ARM ASSEMBLY AND POLE, STEEL WITH LUMINAIRE |
| UNIT DUCT | UNIT DUCT |
| COMMON TRENCH | COMMON TRENCH |
| HANDHOLE | HANDHOLE |
| HEAVY DUTY HANDHOLE | HEAVY DUTY HANDHOLE |
| DOUBLE HANDHOLE | DOUBLE HANDHOLE |
| G.S. CONDUIT IN TRENCH (T) OR PUSHED (P) | G.S. CONDUIT IN TRENCH (T) OR PUSHED (P) |
| PEDESTRIAN PUSHBUTTON DETECTOR | PEDESTRIAN PUSHBUTTON DETECTOR |
| DETECTOR LOOP | DETECTOR LOOP |
| CAST IRON JUNCTION BOX | CAST IRON JUNCTION BOX |
| EMERGENCY VEHICLE LIGHT DETECTOR | EMERGENCY VEHICLE LIGHT DETECTOR |
| CONFIRMATION BEACON | CONFIRMATION BEACON |
| SIGNAL HEAD OPTICALLY PROGRAMMED | SIGNAL HEAD OPTICALLY PROGRAMMED |
| CONDUIT SPLICE | CONDUIT SPLICE |
| WOOD POLE | WOOD POLE |
| RACEWAY FOR MAGNETIC DETECTOR, TYPE I OR TYPE II | RACEWAY FOR MAGNETIC DETECTOR, TYPE I OR TYPE II |
| VEHICLE DETECTOR, NON COMPENSATED MAGNETIC TYPE | VEHICLE DETECTOR, NON COMPENSATED MAGNETIC TYPE |
| RAILROAD CONTROL CABINET | RAILROAD CONTROL CABINET |
| TELEPHONE CONNECTION | TELEPHONE CONNECTION |
| ILLUMINATED SIGN "NO LEFT TURN" | ILLUMINATED SIGN "NO LEFT TURN" |
| ILLUMINATED SIGN "NO RIGHT TURN" | ILLUMINATED SIGN "NO RIGHT TURN" |
| UNINTERRUPTIBLE POWER SUPPLY | UNINTERRUPTIBLE POWER SUPPLY |
| DETECTION ZONE | DETECTION ZONE |



NOTE:
 THE TRAFFIC SIGNAL CONTROLLER EQUIPMENT FOR THIS PROJECT SHALL BE "ECONOLITE" TO MATCH THE EXISTING ADJACENT SYSTEM.

RESTORATION OF WORK AREA. RESTORATION OF THE TRAFFIC SIGNAL WORK AREA SHALL BE INCIDENTAL TO THE RELATED PAY ITEM SUCH AS FOUNDATION, CONDUIT, HANDHOLE, TRENCH AND BACKFILL, ETC., AND NO EXTRA COMPENSATION SHALL BE ALLOWED. ALL ROADWAY SURFACES SUCH AS SHOULDERS, MEDIANS, SIDEWALKS, PAVEMENT, ETC. SHALL BE REPLACED IN KIND. ALL DAMAGE TO MOWED LAWNS SHALL BE REPLACED WITH AN APPROVED SOD, AND ALL DAMAGE TO UNMOWED FIELDS SHALL BE SEEDED IN ACCORDANCE WITH STANDARD SPECIFICATIONS 252 AND 250 RESPECTIVELY.



R10-5
 24" x 30"
 8-REQUIRED

THE FOLLOWING ITEMS SHALL BE REMOVED BY THE CONTRACTOR AND SHALL BE DISPOSED OF BY THEM OUTSIDE THE RIGHT-OF-WAY AT THEIR EXPENSE. THE SALVAGE VALUE OF THE REMOVED EQUIPMENT SHALL BE REFLECTED IN THE CONTRACT BID PRICE.

- 4 EACH PEDESTRIAN SIGNAL HEAD, 2-FACE
- 4 EACH PEDESTRIAN PUSH-BUTTON

| | | | | | | | | | | | | | | | | |
|---|---------------------|----------------|-----------|---|---|-----------|----|--------|---------------------|---------------------------|--------|--------------|-------------|------|----|---|
| FILE NAME : ... \M001_IL58 @ Roselle.dgn | USER NAME : FPAIONE | DESIGNED - ABR | REVISED - | STATE OF ILLINOIS DEPARTMENT OF TRANSPORTATION | TRAFFIC SIGNAL MODERNIZATION PLAN IL ROUTE 58 (GOLF ROAD) AND ROSELLE ROAD | | | | F.A.P. RTE. | SECTION | COUNTY | TOTAL SHEETS | SHEET NO. | | | |
| PLOT SCALE = 20' | CHECKED - MJT | REVISED - | REVISED - | | SCALE: 1"=20' | SHEET NO. | OF | SHEETS | STA. | TO | STA. | VAR | 2009-008-TS | COOK | 41 | 4 |
| PLOT DATE = 1/25/2009 | DATE - | REVISED - | REVISED - | | | | | | CONTRACT NO. 60G04 | | | | | | | |
| | | | | | | | | | FED. ROAD DIST. NO. | ILLINOIS FED. AID PROJECT | | | | | | |