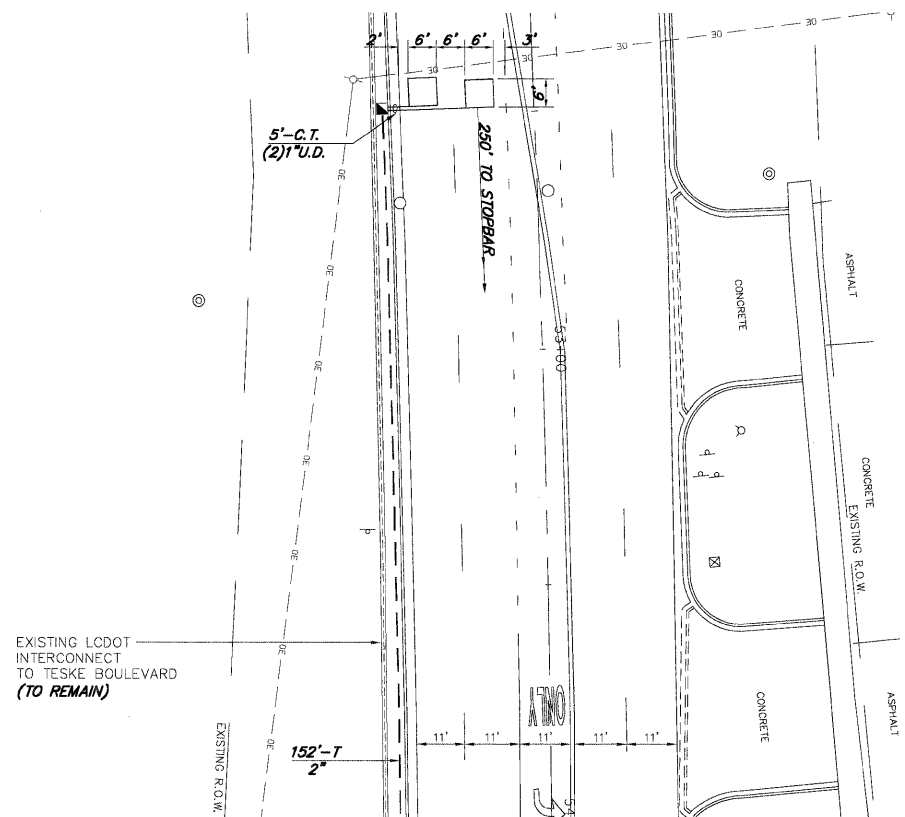
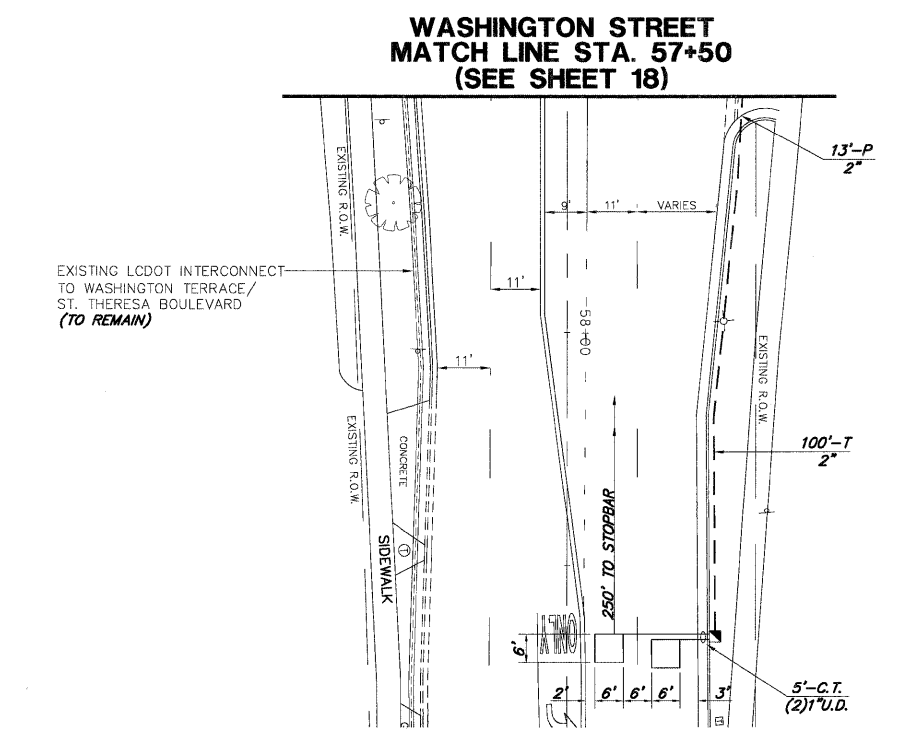


**TRAFFIC SIGNAL LEGEND**

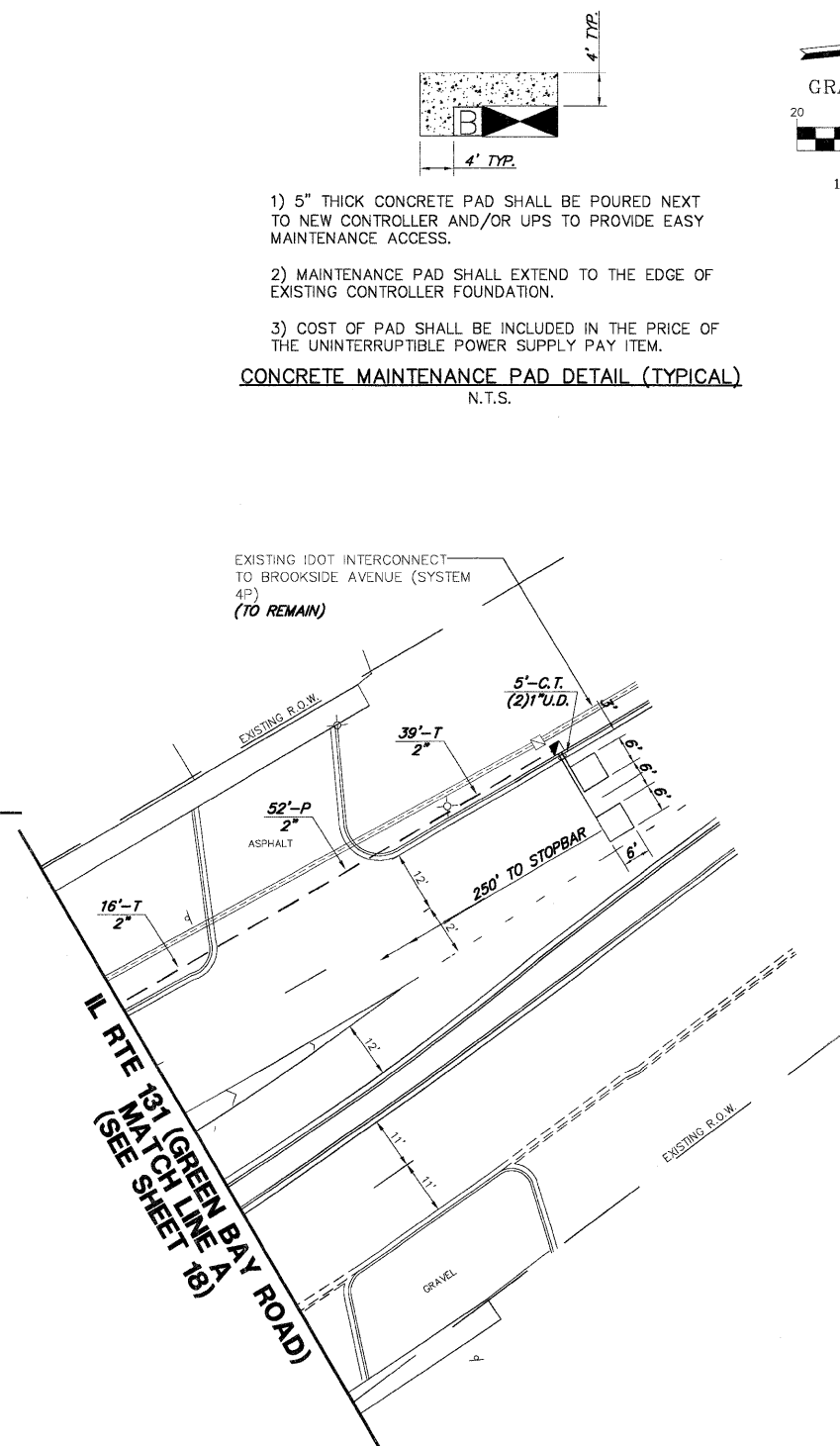
	PROPOSED	EXISTING
CONTROLLER		
SERVICE INSTALLATION		
SIGNAL HEAD AND POST		
SIGNAL HEAD AND BACKPLATE		
SIGNAL HEAD, PEDESTRIAN		
SIGNAL POST		
MAST ARM ASSEMBLY AND POLE, STEEL		
MAST ARM ASSEMBLY AND POLE, ALUMINUM		
COMBINATION MAST ARM ASSEMBLY AND POLE, STEEL WITH LUMINAIRE		
UNIT DUCT	UD	
COMMON TRENCH	CT	
HANDHOLE		
HEAVY DUTY HANDHOLE		
DOUBLE HANDHOLE		
G.S. CONDUIT IN TRENCH (T) OR PUSHED (P)		
PEDESTRIAN PUSHBUTTON DETECTOR		
DETECTOR LOOP		
CAST IRON JUNCTION BOX		
EMERGENCY VEHICLE SYSTEM DETECTOR		
CONFIRMATION BEACON		
SIGNAL HEAD OPTICALLY PROGRAMMED		
CONDUIT SPLICE		
WOOD POLE		
RACEWAY FOR MAGNETIC DETECTOR, TYPE I OR TYPE II		
VEHICLE DETECTOR, NON COMPENSATED MAGNETIC TYPE		
RAILROAD CONTROL CABINET		
TELEPHONE CONNECTION		
ILLUMINATED SIGN "NO LEFT TURN"		
ILLUMINATED SIGN "NO RIGHT TURN"		
UNINTERRUPTIBLE POWER SUPPLY (UPS)		



**WASHINGTON STREET  
MATCH LINE STA. 54+00  
(SEE SHEET 18)**



**WASHINGTON STREET  
MATCH LINE STA. 57+50  
(SEE SHEET 18)**



**IL RTE 131 (GREEN BAY ROAD)  
MATCH LINE A  
(SEE SHEET 18)**

- 5" THICK CONCRETE PAD SHALL BE POURED NEXT TO NEW CONTROLLER AND/OR UPS TO PROVIDE EASY MAINTENANCE ACCESS.
  - MAINTENANCE PAD SHALL EXTEND TO THE EDGE OF EXISTING CONTROLLER FOUNDATION.
  - COST OF PAD SHALL BE INCLUDED IN THE PRICE OF THE UNINTERRUPTIBLE POWER SUPPLY PAY ITEM.
- CONCRETE MAINTENANCE PAD DETAIL (TYPICAL)**  
N.T.S.



THE TRAFFIC SIGNAL CONTROL EQUIPMENT FOR THIS PROJECT SHALL BE "NTCIP" COMPLIANT.

FILE NAME = 4085.800-TR1.dgn	USER NAME =	DESIGNED - JRD	REVISED -	STATE OF ILLINOIS DEPARTMENT OF TRANSPORTATION	TRAFFIC SIGNAL MODERNIZATION PLAN ILL RTE 131 (GREEN BAY RD.) AND WASHINGTON STREET		F.A.U. RTE. 27H	SECTION 2009-005 TS	COUNTY 097(LAKE)LK	TOTAL SHEETS 21	SHEET NO. 19	CONTRACT NO. 60601	
	PLOT SCALE = 1"=20'	CHECKED - KLB	REVISED -		SCALE: 1"=20'	SHEET NO. 19 OF 21 SHEETS	STA. TO STA.	ILLINOIS FED. AID PROJECT					
	PLOT DATE = 1/29/09	DATE - 1/29/09	REVISED -										

GHA #4085.806