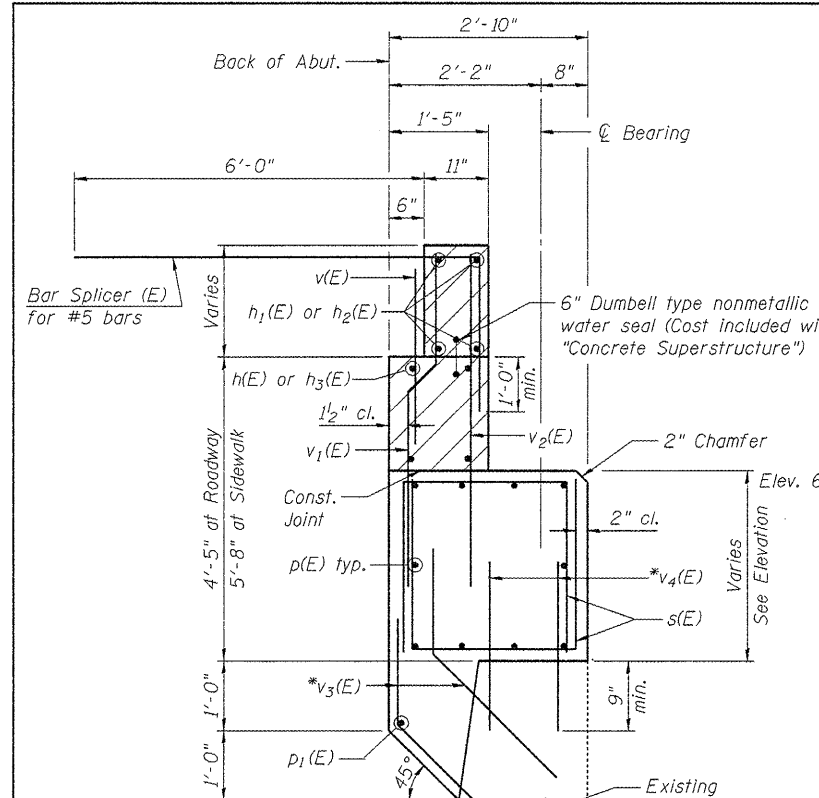
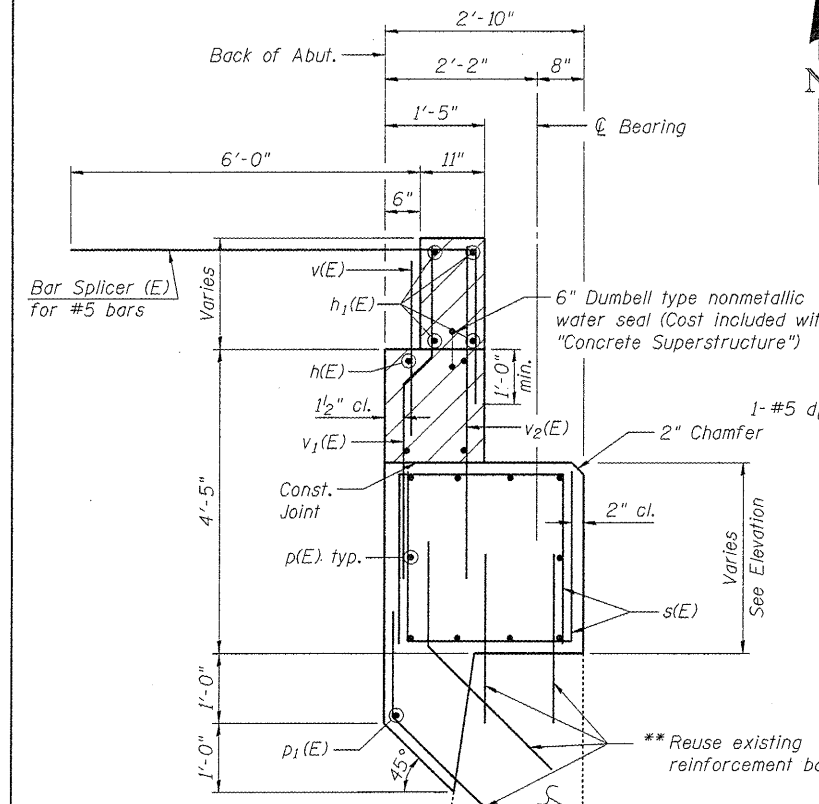


STATE OF ILLINOIS
DEPARTMENT OF TRANSPORTATION

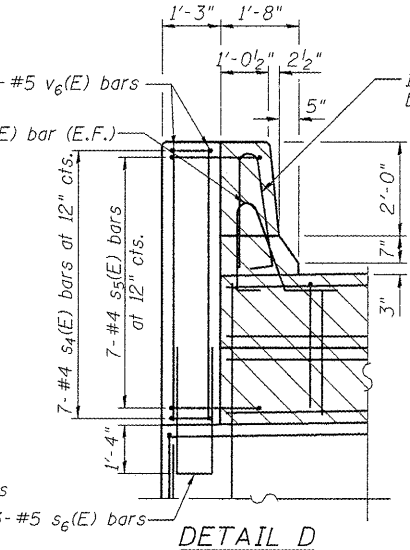
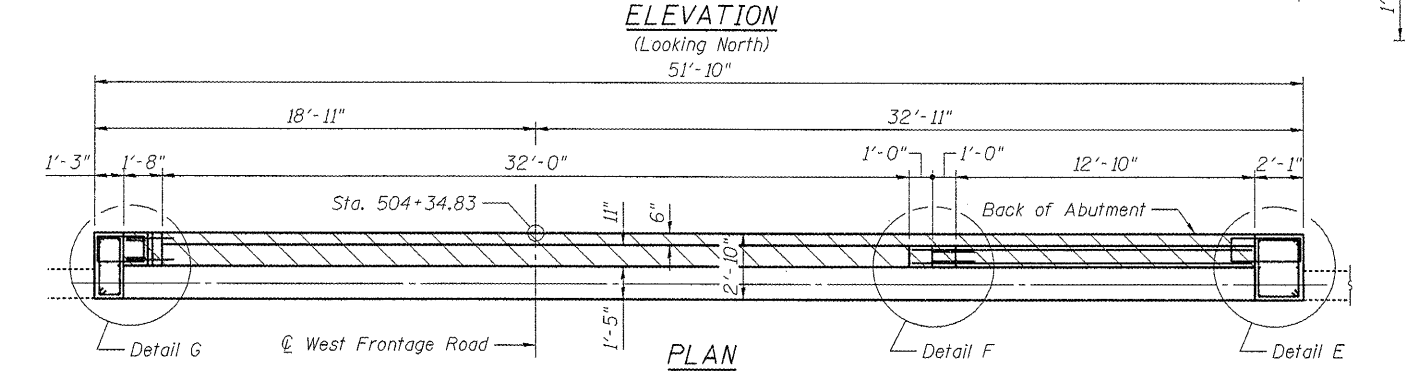
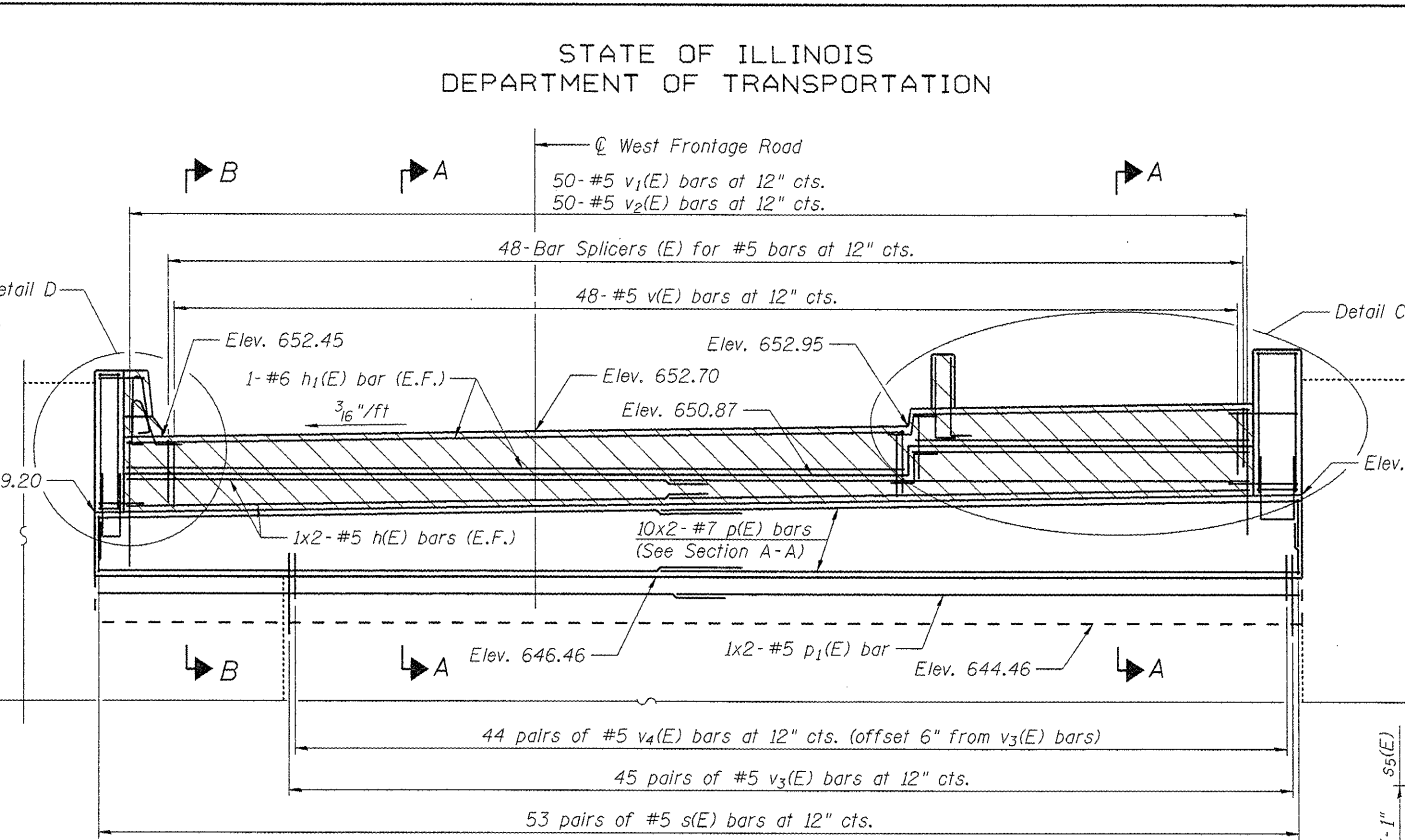


* Drill and grout #5 v3(E) and v4(E) bars in 7/8" φ x 9" min. holes according to Section 584 of the Standard Specifications. Cost included with "Reinforcement Bars, Epoxy Coated."

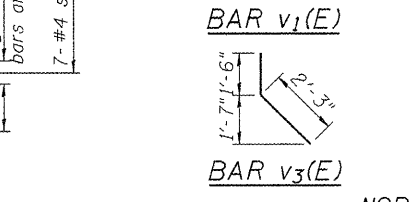
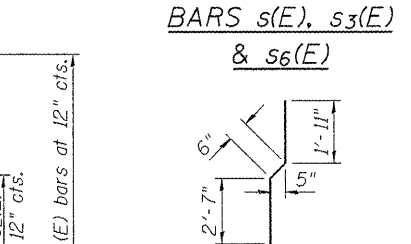
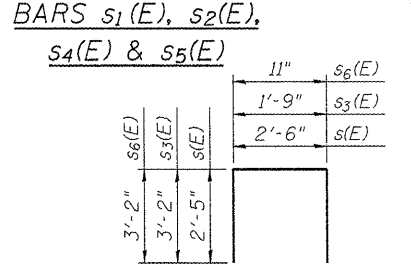
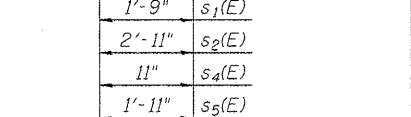
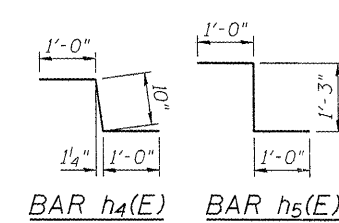
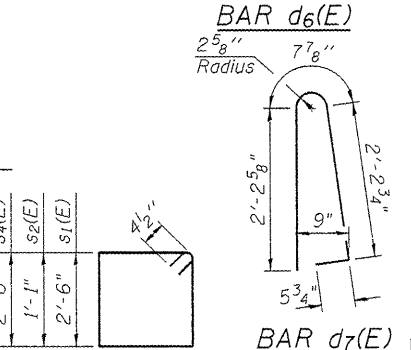
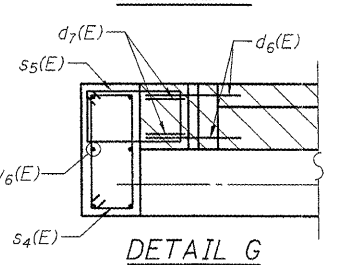
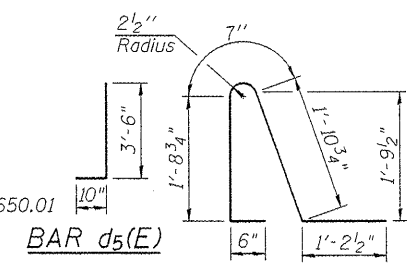
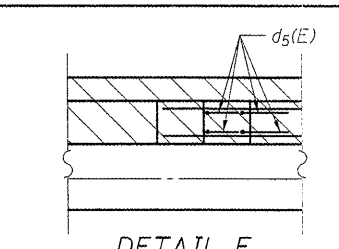
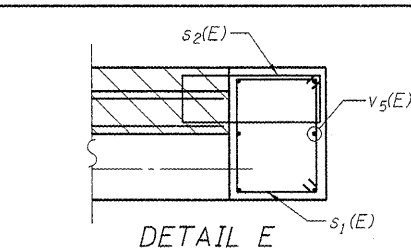
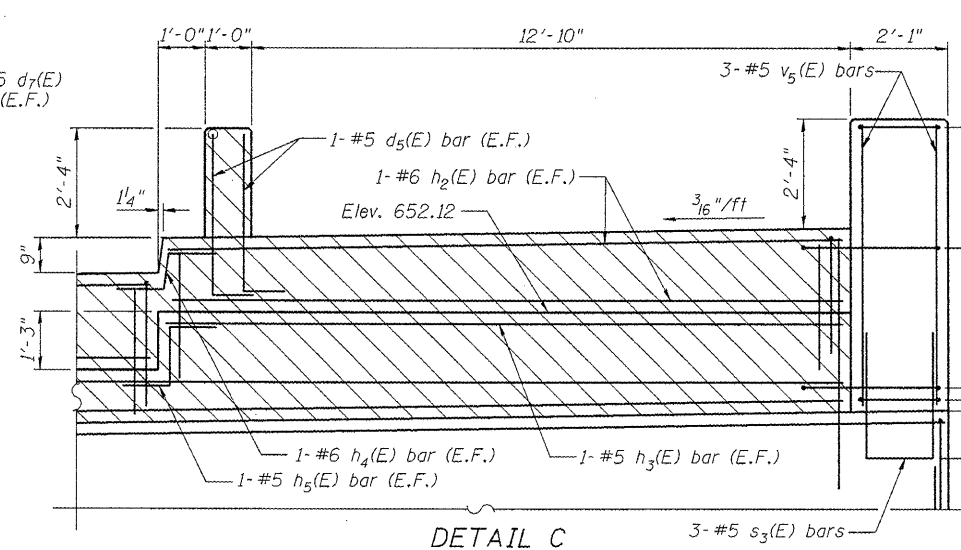


DESIGNED -	BPS
CHECKED -	GSP
DRAWN -	BPS/MJB
CHECKED -	GSP

** Existing reinforcement shall be cleaned and incorporated into the new construction. Cost included with Concrete Removal.



MINIMUM BAR LAPS
(Abutment)
#5 bar = 2'-3"
#7 bar = 3'-8"



**NORTH ABUTMENT
BILL OF MATERIAL**

Bar	No.	Size	Length	Shape
d5(E)	4	#5	4'-4"	J
d6(E)	2	#5	5'-11"	J
d7(E)	2	#5	5'-7"	J
h(E)	8	#5	25'-3"	—
h1(E)	4	#6	33'-4"	—
h2(E)	4	#6	14'-6"	—
h3(E)	2	#5	14'-6"	—
h4(E)	2	#6	2'-10"	J
h5(E)	2	#5	3'-3"	J
p(E)	20	#7	27'-7"	—
p1(E)	2	#5	26'-11"	—
s(E)	106	#5	7'-4"	□
s1(E)	7	#4	9'-3"	□
s2(E)	5	#4	8'-9"	□
s3(E)	3	#5	8'-1"	□
s4(E)	7	#4	7'-7"	□
s5(E)	7	#4	6'-9"	□
s6(E)	3	#5	7'-3"	□
v(E)	48	#5	2'-10"	—
v1(E)	50	#5	5'-0"	—
v2(E)	50	#5	4'-9"	—
v3(E)	90	#5	3'-9"	—
v4(E)	88	#5	2'-8"	—
v5(E)	6	#5	5'-10"	—
v6(E)	6	#5	5'-8"	—
Structure Excavation		Cu. Yd.	30	
Concrete Structures		Cu. Yd.	22.2	
Reinforcement Bars, Epoxy Coated		Pound	4,090	
Concrete Sealer		Sq. Ft.	400	

**NORTH ABUTMENT
STRUCTURE NO. 016-2530**

SHEET NO. 14	F.A.P. RTE.	SECTION	COUNTY	TOTAL SHEETS	SHEET NO.
	305	1415 B	COOK	75	52
15 SHEETS	CONTRACT NO. 60F60			FED. ROAD DIST. NO. 7 ILLINOIS FED. AID PROJECT	



Notes:
Hatched area to be poured after Concrete Wearing Surface is in place. Quantity of concrete included with Concrete Superstructure.
Bars indicated thus 20x3- #5 etc. indicates 20 lines of bars with 3 lengths per line.
For details of Bar Splicers, see Sheet 15 of 15.

g:\project\2082\305\Cadd\structural\Sh1\0162530-ABN.dgn