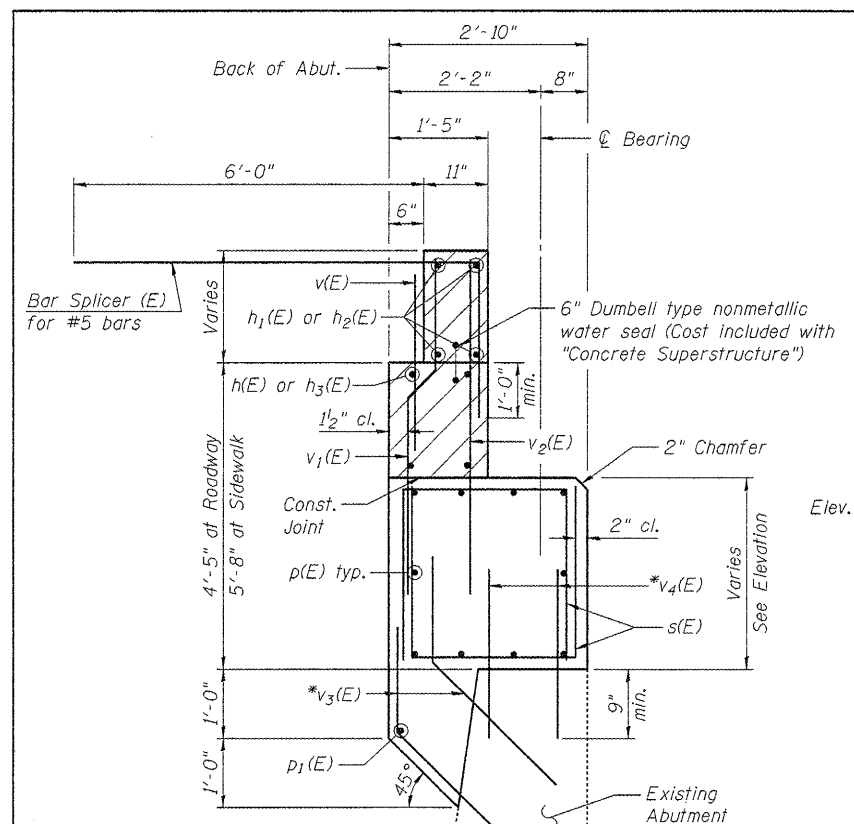
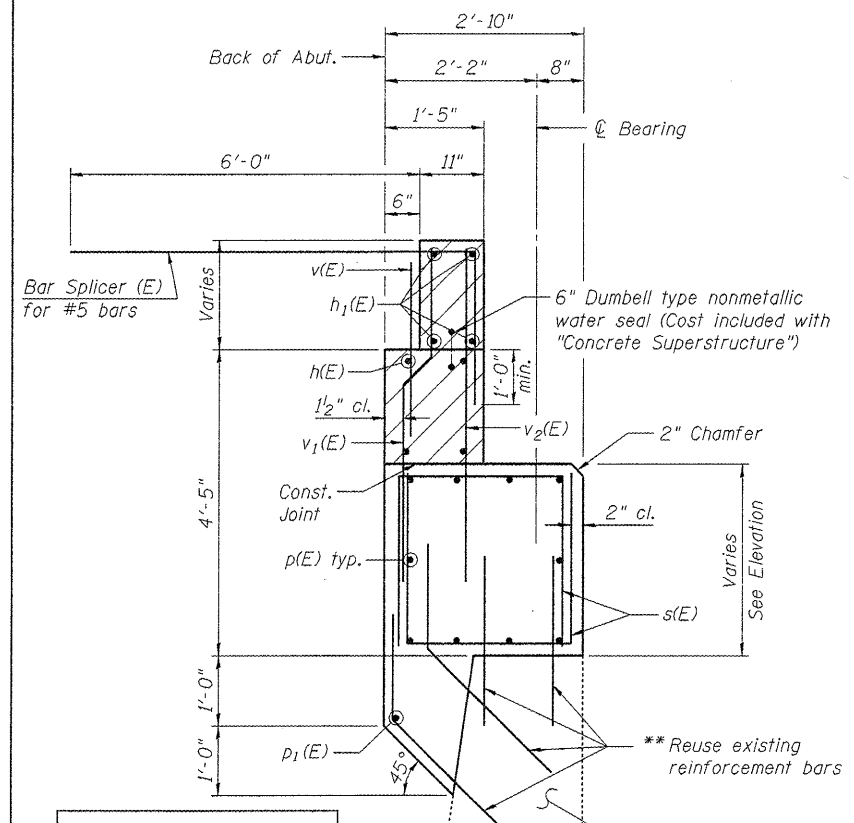


STATE OF ILLINOIS
DEPARTMENT OF TRANSPORTATION



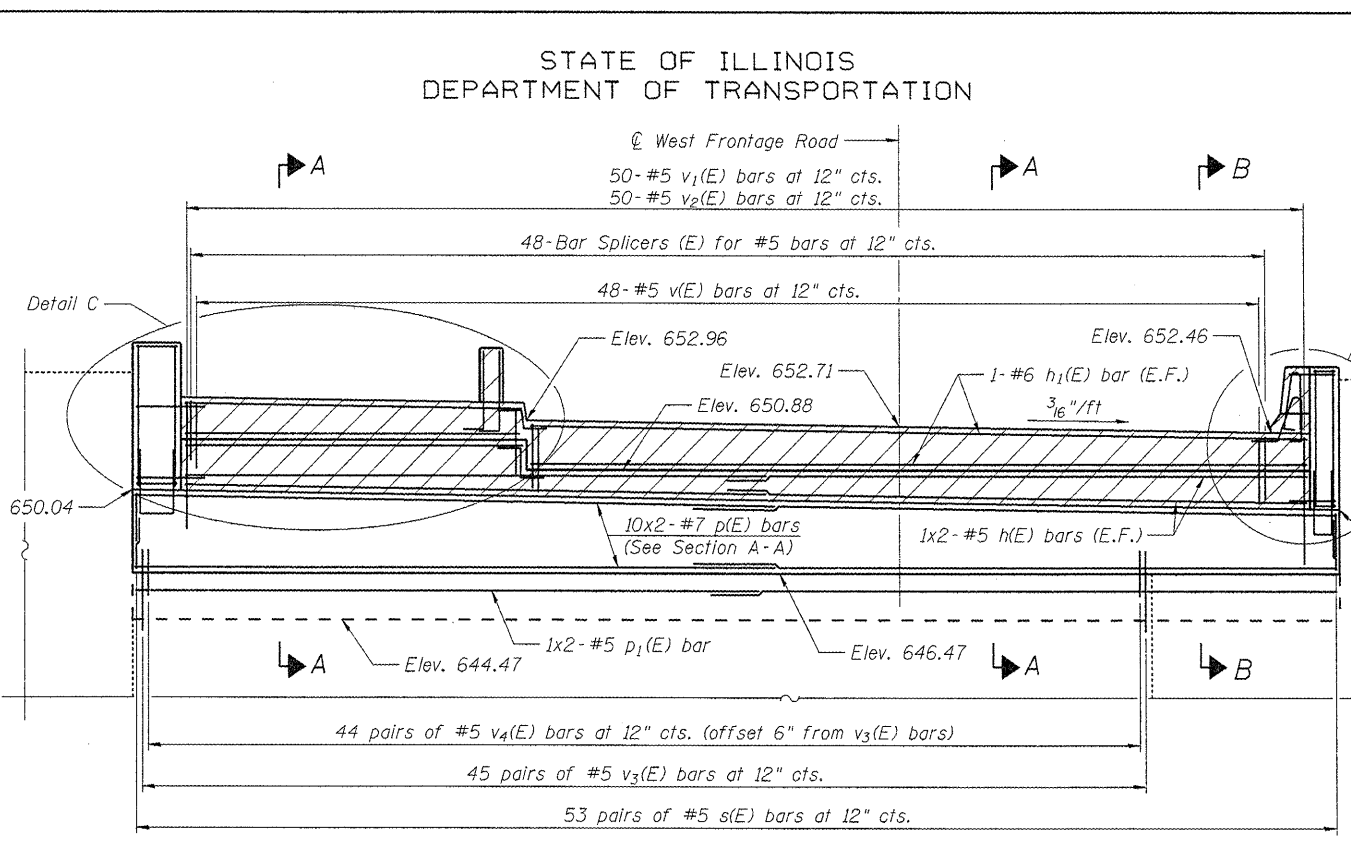
*Drill and grout #5 v₃(E) and v₄(E) bars in 7/8"φ x 9" min. holes according to Section 584 of the Standard Specifications. Cost included with "Reinforcement Bars, Epoxy Coated."

SECTION A-A

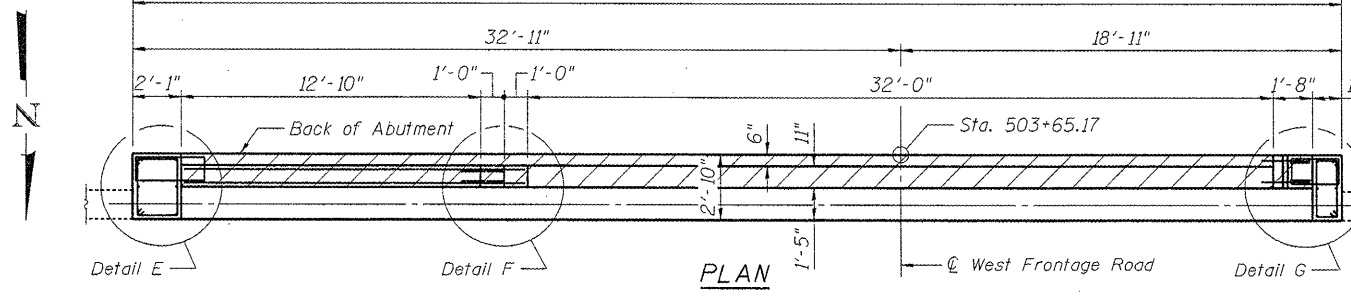


SECTION B-B

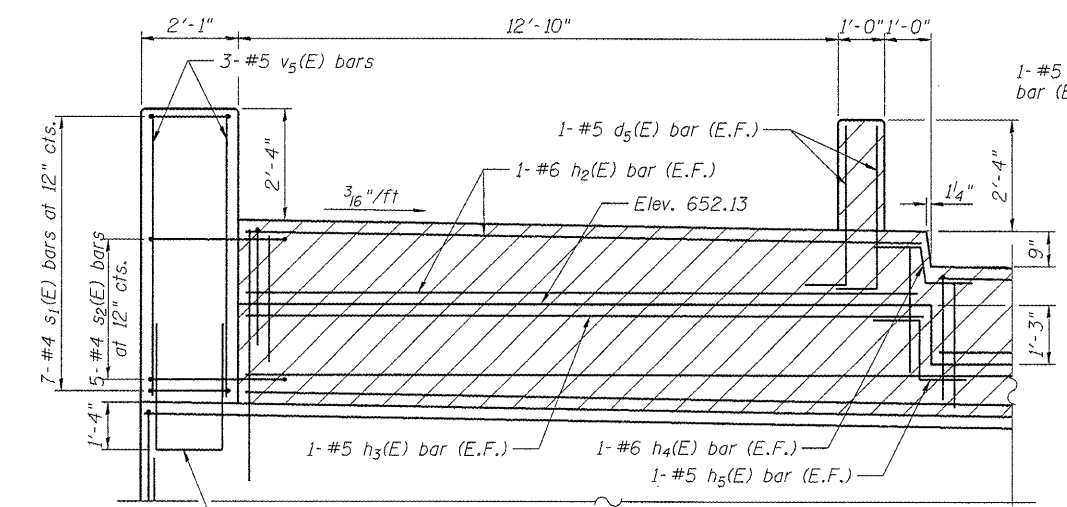
Existing Abutment (converted from retaining wall in 2003 widening)
** Existing reinforcement shall be cleaned and incorporated into the new construction. Cost included with Concrete Removal.



ELEVATION
(Looking South)



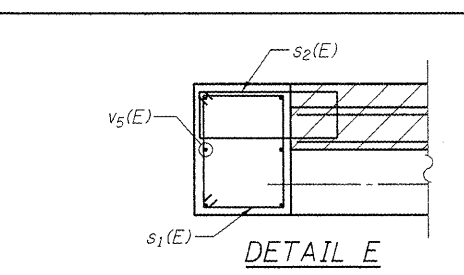
PLAN



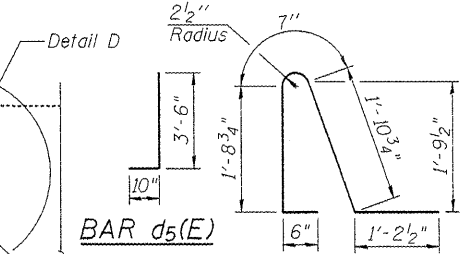
DETAIL C

MINIMUM BAR LAPS
(Abutment)
#5 bar = 2'-3"
#7 bar = 3'-8"

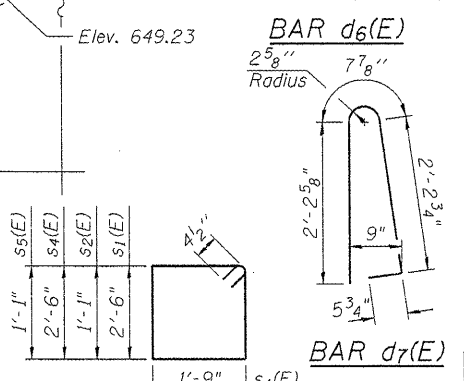
Notes:
Hatched area to be poured after Concrete Wearing Surface is in place. Quantity of concrete included with Concrete Superstructure.
Bars indicated thus 20x3-#5 etc. indicates 20 lines of bars with 3 lengths per line.
For details of Bar Splicers, see Sheet 15 of 15.



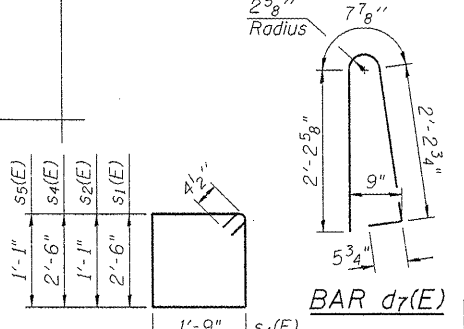
DETAIL E



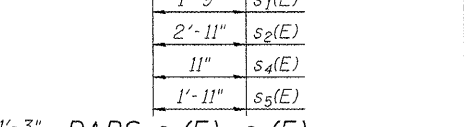
BAR d5(E)



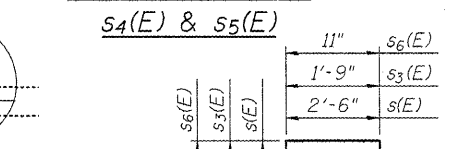
BAR d6(E)



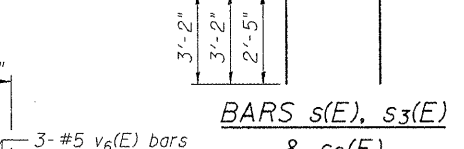
BAR d7(E)



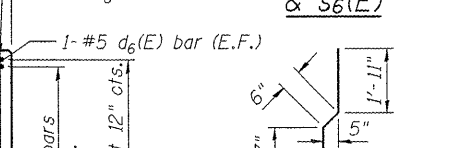
BARS s1(E), s2(E), s4(E) & s5(E)



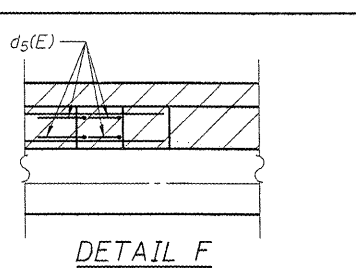
BARS s(E), s3(E) & s6(E)



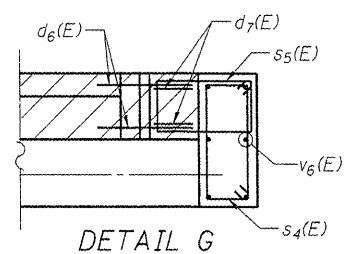
BAR v1(E)



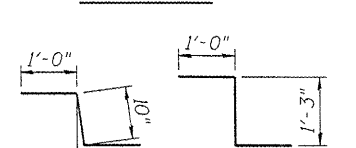
BAR v3(E)



DETAIL F



DETAIL G



BAR h4(E) BAR h5(E)

SOUTH ABUTMENT
BILL OF MATERIAL

Bar	No.	Size	Length	Shape
d5(E)	4	#5	4'-4"	J
d6(E)	2	#5	5'-11"	J
d7(E)	2	#5	5'-7"	J
h(E)	8	#5	25'-3"	—
h1(E)	4	#6	33'-4"	—
h2(E)	4	#6	14'-6"	—
h3(E)	2	#5	14'-6"	—
h4(E)	2	#6	2'-10"	—
h5(E)	2	#5	3'-3"	—
p(E)	20	#7	27'-7"	—
p1(E)	2	#5	26'-11"	—
s(E)	106	#5	7'-4"	—
s1(E)	7	#4	9'-3"	—
s2(E)	5	#4	8'-9"	—
s3(E)	3	#5	8'-1"	—
s4(E)	7	#4	7'-7"	—
s5(E)	7	#4	6'-9"	—
s6(E)	3	#5	7'-3"	—
v(E)	48	#5	2'-10"	—
v1(E)	50	#5	5'-0"	—
v2(E)	50	#5	4'-9"	—
v3(E)	90	#5	3'-9"	—
v4(E)	88	#5	2'-8"	—
v5(E)	6	#5	5'-10"	—
v6(E)	6	#5	5'-8"	—
Structure Excavation			Cu. Yd.	30
Concrete Structures			Cu. Yd.	22.3
Reinforcement Bars, Epoxy Coated			Pound	4,090
Concrete Sealer			Sq. Ft.	401

SOUTH ABUTMENT
STRUCTURE NO. 016-2530

DESIGNED -	BPS
CHECKED -	GSP
DRAWN -	BPS/MJB
CHECKED -	GSP

SHEET NO. 13	F.A.P. RTE. 305	SECTION 1415 B	COUNTY COOK	TOTAL SHEETS 75	SHEET NO. 51
15 SHEETS	FED. ROAD DIST. NO. 7 ILLINOIS		FED. AID PROJECT		
			CONTRACT NO. 60F60		



g:\proj\2082.305\cadd\structural\sh\1\0162530-ABS.dgn