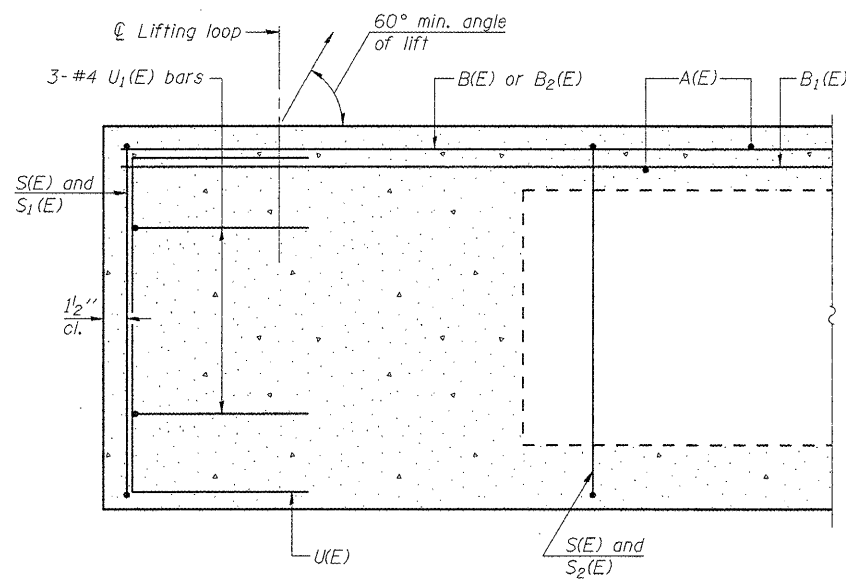
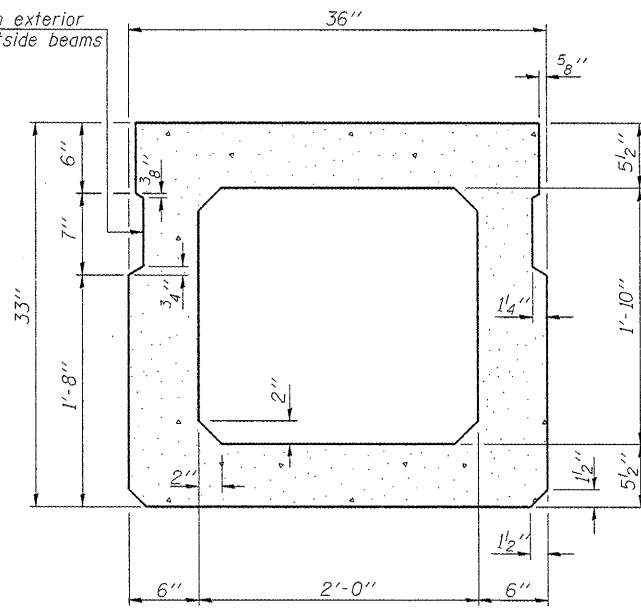


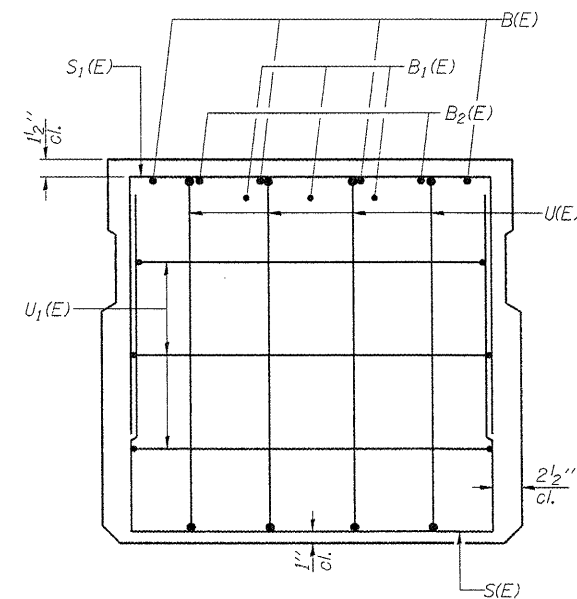
STATE OF ILLINOIS  
DEPARTMENT OF TRANSPORTATION



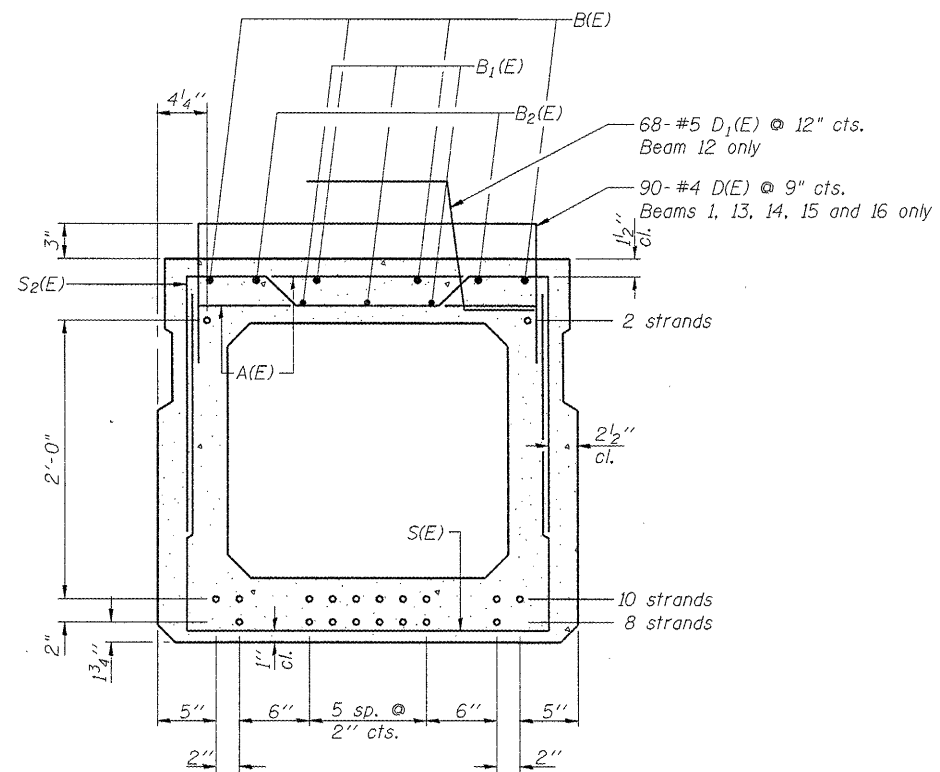
SECTION C-C



SECTION A-A  
(Showing dimensions)



VIEW B-B



SECTION A-A

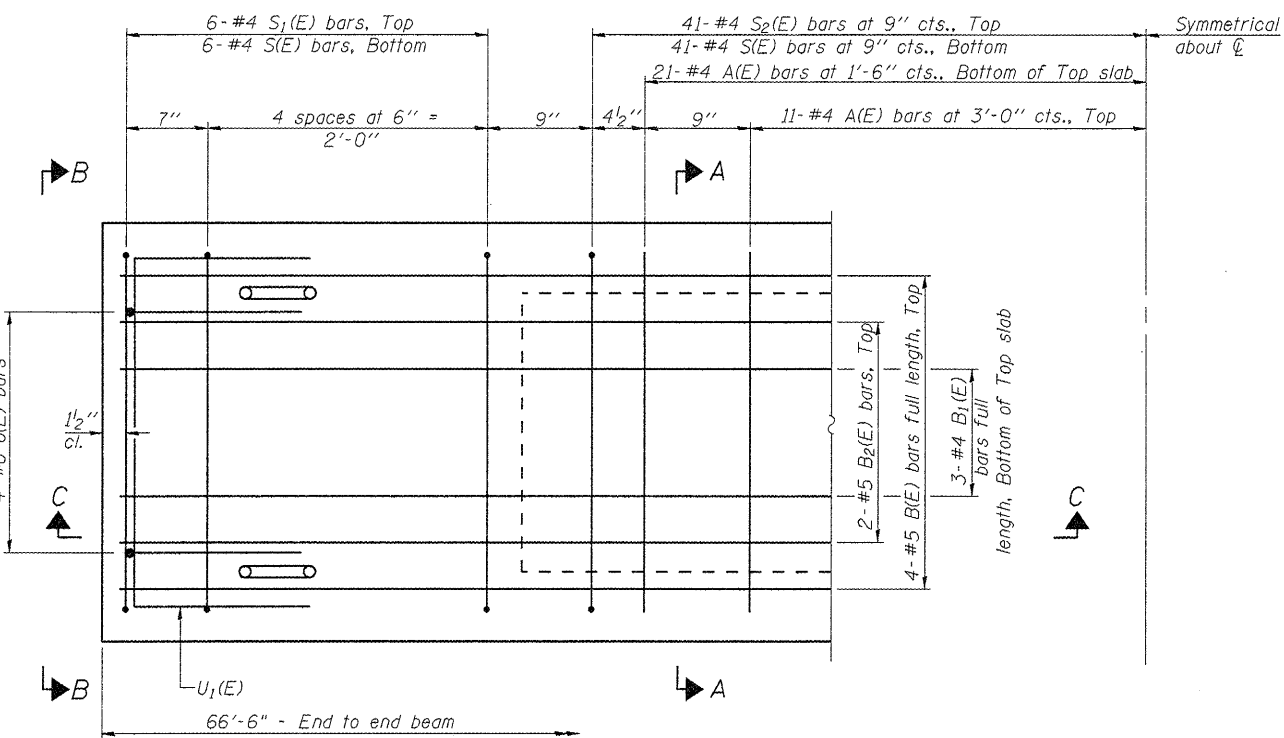
(Showing reinforcement and permissible strand locations)

Note: Place the number of strands specified in each row symmetrically about the centerline of beam in the permissible strand locations shown.

BAR LIST  
ONE BEAM ONLY  
(For information only)

Bar	No.	Size	Length	Shape
A(E)	64	#4	2'-7"	—
B(E)	8	#5	34'-3"	—
B1(E)	6	#4	34'-0"	—
B2(E)	4	#5	34'-3"	—
D(E)	90	#4	4'-7"	⌋
D1(E)	68	#5	2'-10"	⌋
S(E)	94	#4	7'-5"	⌋
S1(E)	12	#4	6'-3"	⌋
S2(E)	82	#4	6'-6"	⌋
U(E)	8	#6	5'-0"	⌋
U1(E)	6	#4	5'-0"	⌋

Note: See sheet 12 of 15 for additional details and Bill of Material.



PLAN VIEW

Note: Spacing of S(E) and S2(E) bars may be adjusted up to 4" in the immediate area of the transverse tie diaphragms to miss the block outs for the transverse ties.

DESIGNED -	BPS
CHECKED -	GSP
DRAWN -	BPS/MJB
CHECKED -	GSP

33" x 36" PPC DECK BEAM  
STRUCTURE NO. 016-2530

SHEET NO. 11	F.A.P. RTE.	SECTION	COUNTY	TOTAL SHEETS	SHEET NO.
	305	1415 B	COOK	75	49
15 SHEETS	FED. ROAD DIST. NO. 7 ILLINOIS FED. AID PROJECT		CONTRACT NO. 60F60		

