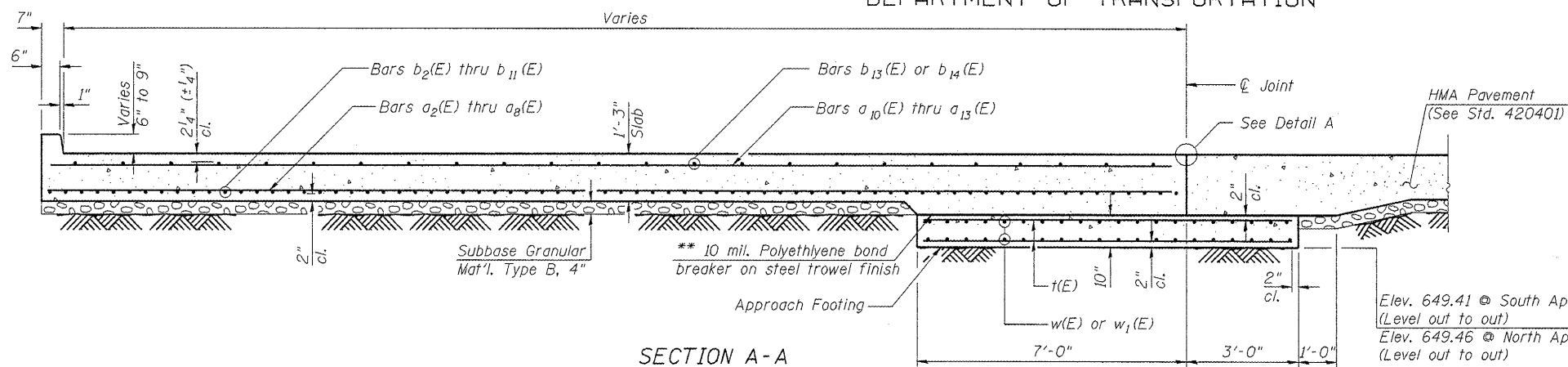


STATE OF ILLINOIS  
DEPARTMENT OF TRANSPORTATION

Notes:  
 Approach slab concrete shall be paid for as Concrete Superstructure.  
 Approach footing concrete shall be paid for as Concrete Structures.  
 Reinforcement shall be paid for as Reinforcement Bars, Epoxy Coated.  
 For v(E) bar details, see sheets 13 or 14 of 15.  
 The approach footing maximum applied service bearing pressure (Qmax) = 2.0 ksf.  
 For bar splicer details, see sheet 15 of 15.  
 Cost of excavation for approach footing included with Concrete Structures.  
 Verify railing post spacing in field prior to placing d<sub>10</sub>(E) bars.  
 \*\* Cost included with Concrete Superstructure



Elev. 649.41 @ South Approach Slab  
(Level out to out)  
 Elev. 649.46 @ North Approach Slab  
(Level out to out)

TWO BRIDGE APPROACHES  
BILL OF MATERIAL

Bar	No.	Size	Length	Shape
a <sub>2</sub> (E)	16	#5	32'-3"	—
a <sub>3</sub> (E)	16	#5	36'-6"	—
a <sub>4</sub> (E)	56	#5	38'-8"	—
a <sub>5</sub> (E)	38	#5	37'-3"	—
a <sub>6</sub> (E)	10	#5	29'-1"	—
a <sub>7</sub> (E)	10	#5	25'-1"	—
a <sub>8</sub> (E)	10	#5	19'-0"	—
a <sub>9</sub> (E)	34	#5	14'-5"	—
a <sub>10</sub> (E)	10	#4	32'-3"	—
a <sub>11</sub> (E)	104	#4	20'-6"	—
a <sub>12</sub> (E)	14	#4	32'-0"	—
a <sub>13</sub> (E)	8	#4	21'-7"	—
a <sub>14</sub> (E)	26	#4	14'-5"	—
b <sub>2</sub> (E)	10	#9	31'-6"	—
b <sub>3</sub> (E)	10	#9	35'-11"	—
b <sub>4</sub> (E)	10	#9	39'-1"	—
b <sub>5</sub> (E)	10	#9	41'-7"	—
b <sub>6</sub> (E)	20	#9	45'-6"	—
b <sub>7</sub> (E)	20	#9	48'-3"	—
b <sub>8</sub> (E)	20	#9	50'-3"	—
b <sub>9</sub> (E)	20	#9	51'-7"	—
b <sub>10</sub> (E)	34	#9	52'-8"	—
b <sub>11</sub> (E)	20	#5	45'-5"	—
b <sub>12</sub> (E)	32	#5	15'-2"	—
b <sub>13</sub> (E)	100	#4	26'-7"	—
b <sub>14</sub> (E)	14	#4	39'-11"	—
b <sub>15</sub> (E)	26	#4	15'-2"	—
d <sub>8</sub> (E)	34	#6	3'-9"	L
d <sub>9</sub> (E)	34	#4	3'-5"	L
d <sub>10</sub> (E)	12	#4	2'-2"	□
e <sub>3</sub> (E)	12	#4	15'-2"	—
t(E)	168	#4	9'-8"	—
w(E)	40	#5	40'-10"	—
w <sub>1</sub> (E)	40	#5	40'-2"	—
Concrete Structures		Cu. Yd.	25.2	
Concrete Superstructure		Cu. Yd.	193.6	
Bridge Deck Grooving		Sq. Yd.	378	
Protective Coat		Sq. Yd.	454	
Reinforcement Bars, Epoxy Coated		Pound	41,620	

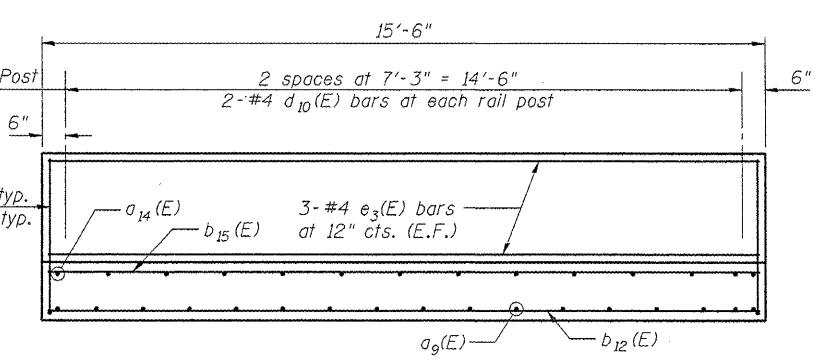
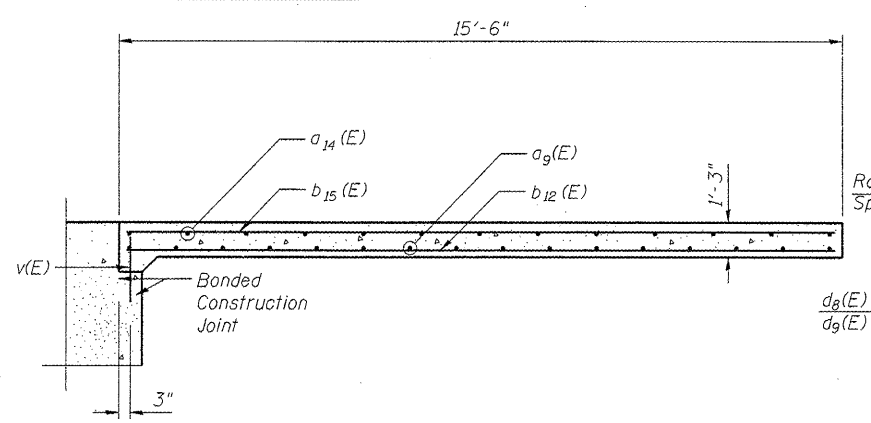
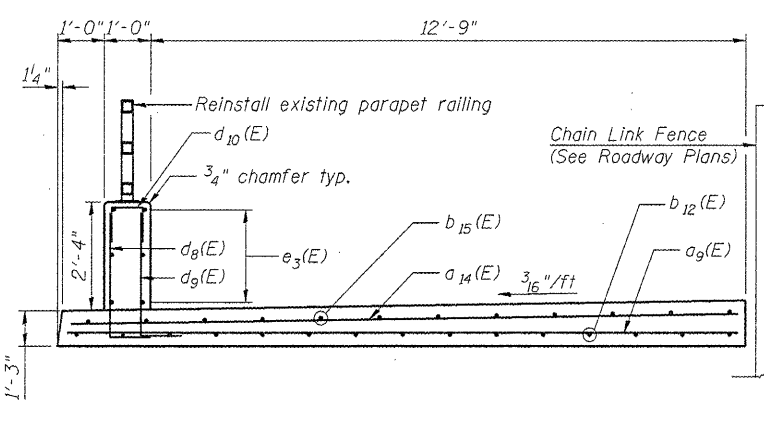
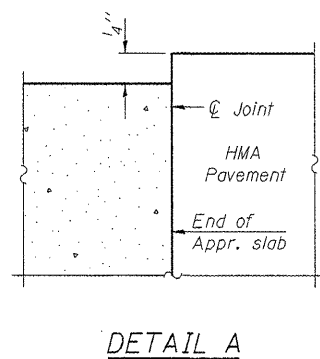
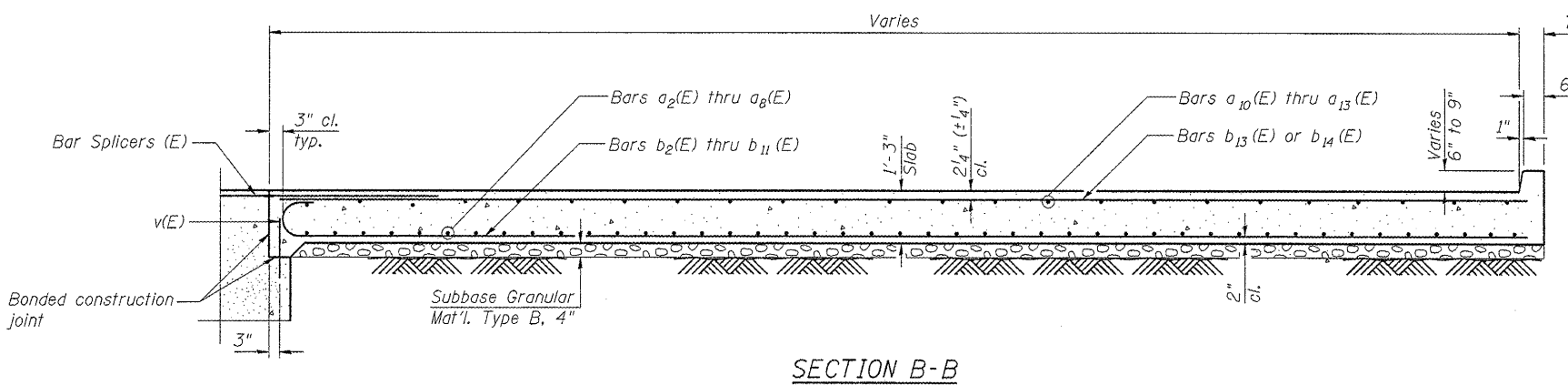
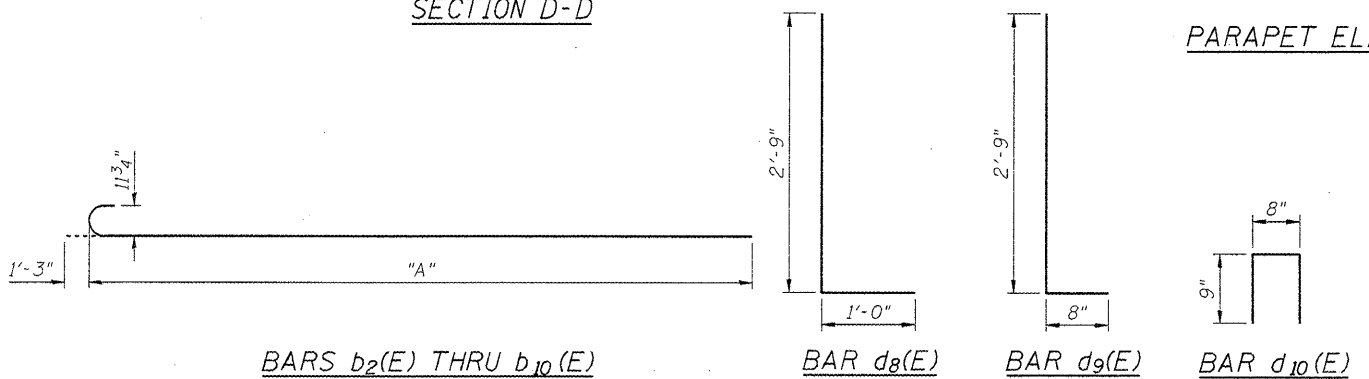


TABLE OF DIMENSIONS  
BARS b<sub>2</sub>(E) THRU b<sub>10</sub>(E)

Bar	Dimension "A"
b <sub>2</sub> (E)	30'-3"
b <sub>3</sub> (E)	34'-8"
b <sub>4</sub> (E)	37'-10"
b <sub>5</sub> (E)	40'-4"
b <sub>6</sub> (E)	44'-3"
b <sub>7</sub> (E)	47'-0"
b <sub>8</sub> (E)	49'-0"
b <sub>9</sub> (E)	50'-4"
b <sub>10</sub> (E)	51'-5"



DESIGNED	BPS
CHECKED	GSP
DRAWN	BPS/MJB
CHECKED	GSP

BRIDGE APPROACH SLAB DETAILS  
STRUCTURE NO. 016-2530

SHEET NO. 7	F.A.P. RTE. 305	SECTION 1415 B	COUNTY COOK	TOTAL SHEETS 75	SHEET NO. 45
15 SHEETS	FED. ROAD DIST. NO. 7 ILLINOIS		FED. AID PROJECT		
		CONTRACT NO. 60F60			



g:\proj\2082305\cadd\structure\1\Shk\0162530-B13.dgn