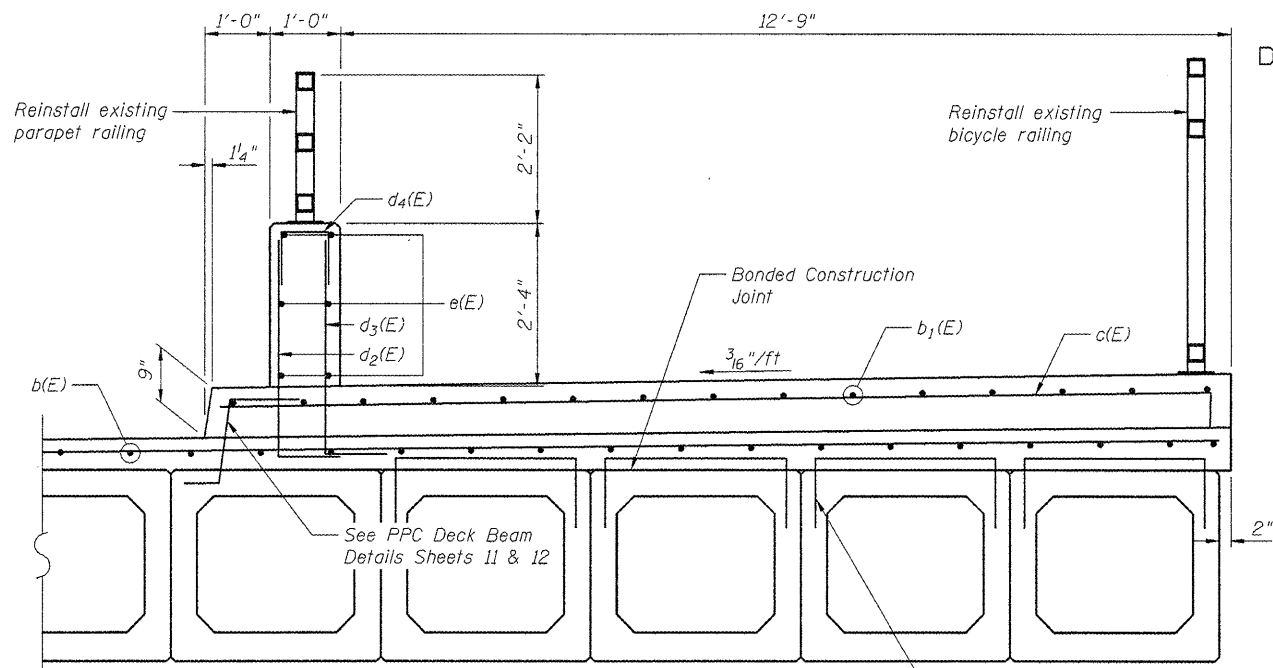
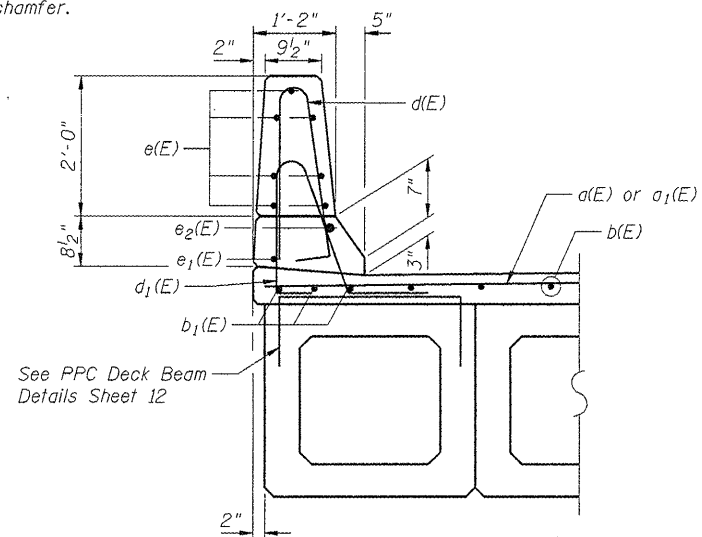


STATE OF ILLINOIS
DEPARTMENT OF TRANSPORTATION



SECTION THRU BICYCLE PATH

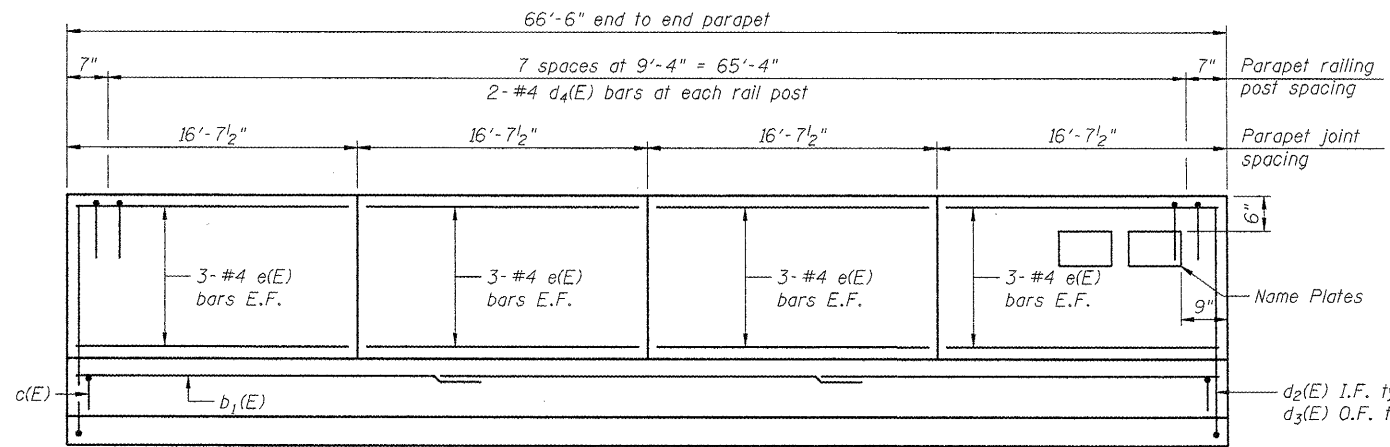
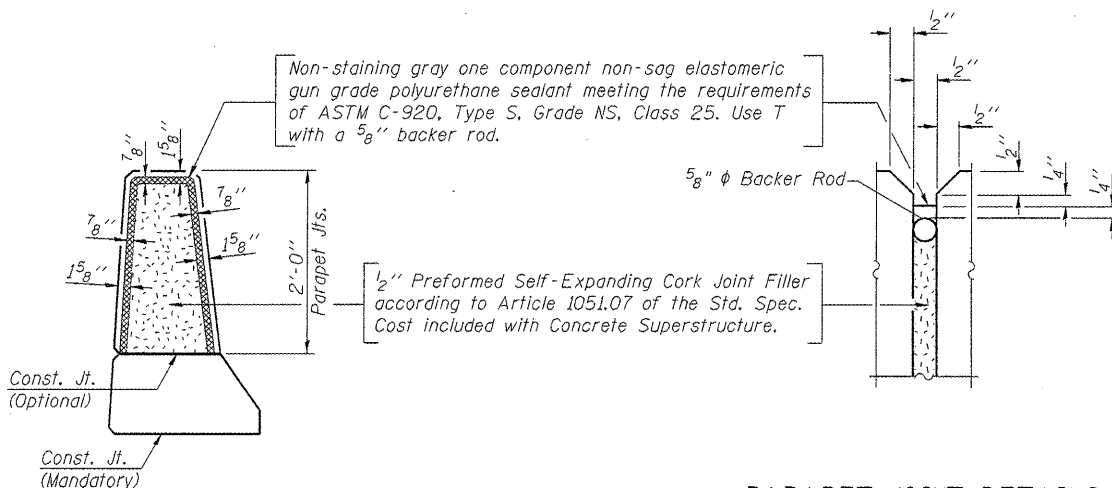
All edges should have 3/4" chamfer.



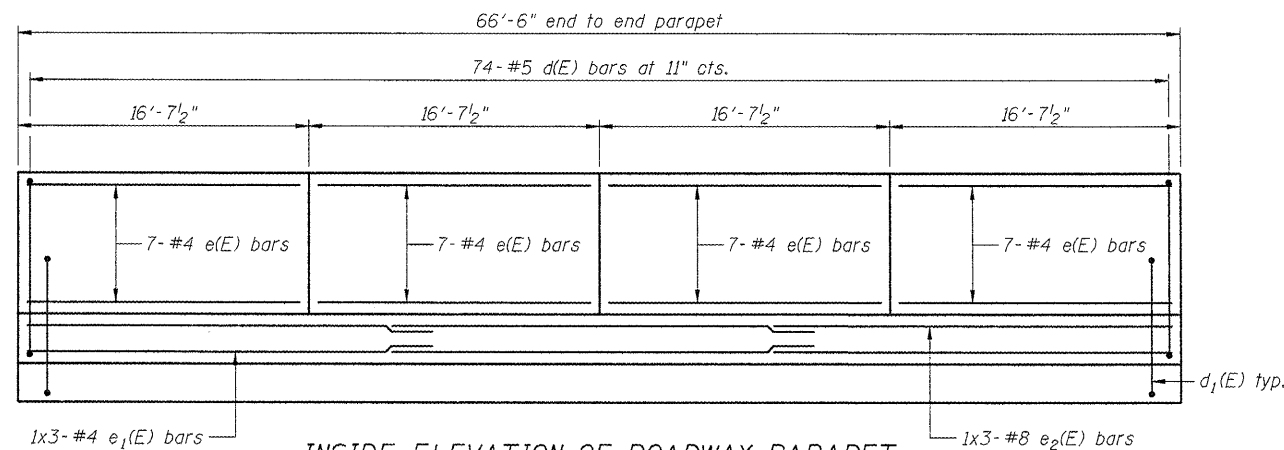
SECTION THRU ROADWAY PARAPET

MINIMUM BAR LAPS
(Parapets)
#4 bar = 1'-4"
#8 bar = 3'-5"

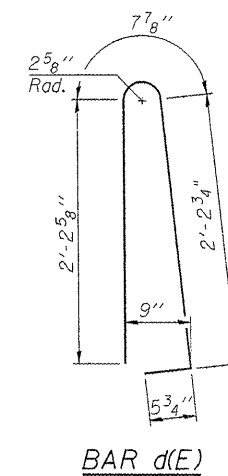
PARAPET JOINT DETAILS



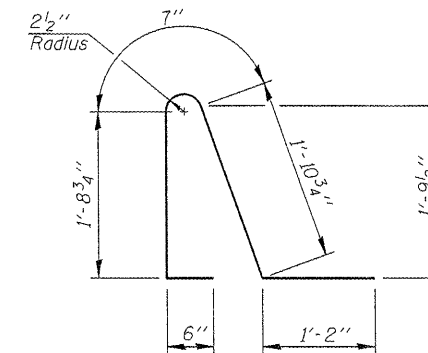
INSIDE ELEVATION OF BICYCLE PATH PARAPET



INSIDE ELEVATION OF ROADWAY PARAPET



BAR d(E)



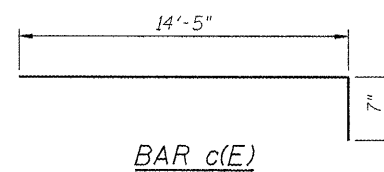
BAR d1(E)

SUPERSTRUCTURE
BILL OF MATERIAL

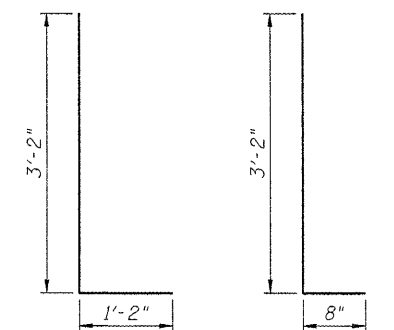
Bar	No.	Size	Length	Shape
d(E)	134	#4	24'-8"	—
a1(E)	66	#4	6'-0"	—
b(E)	144	#4	23'-0"	—
b1(E)	57	#5	23'-2"	—
c(E)	67	#5	15'-0"	—
d(E)	74	#5	6'-10"	Λ
d1(E)	74	#5	5'-10"	Λ
d2(E)	67	#6	4'-4"	L
d3(E)	67	#4	3'-10"	L
d4(E)	16	#4	2'-2"	□
e(E)	52	#4	16'-3"	—
e1(E)	3	#4	23'-0"	—
e2(E)	3	#8	24'-4"	—

Item	Unit	Quantity
Protective Coat	Sq. Yd.	410
Concrete Superstructure	Cu. Yd.	55.3
Bridge Deck Grooving	Sq. Yd.	237
Concrete Wearing Surface	Sq. Yd.	357.1
Reinforcement Bars, Epoxy Coated	Pound	9,520

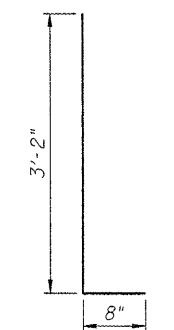
SUPERSTRUCTURE DETAILS
STRUCTURE NO. 016-2530



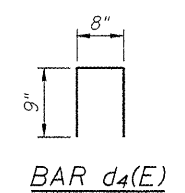
BAR c(E)



BAR d2(E)



BAR d3(E)



BAR d4(E)

DESIGNED	BPS
CHECKED	GSP
DRAWN	BPS/MJB
CHECKED	GSP

SHEET NO. 4 15 SHEETS	F.A.P. RTE.	SECTION	COUNTY	TOTAL SHEETS	SHEET NO.
	305	1415 B	COOK	75	42
			CONTRACT NO. 60F60		
FED. ROAD DIST. NO. 7 ILLINOIS FED. AID PROJECT					

