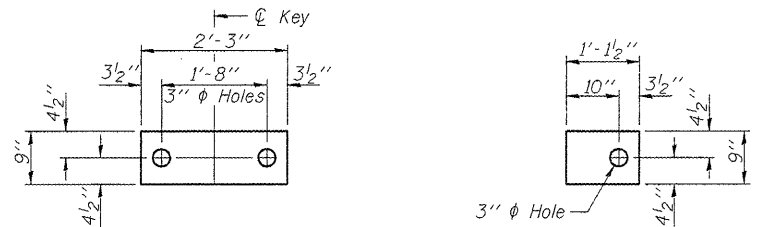


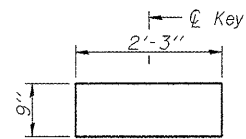
STATE OF ILLINOIS
DEPARTMENT OF TRANSPORTATION



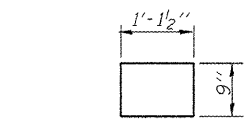
FABRIC BEARING PAD
(Interior - 12 Required)

FABRIC BEARING PAD
(Exterior - 2 Required)

FIXED

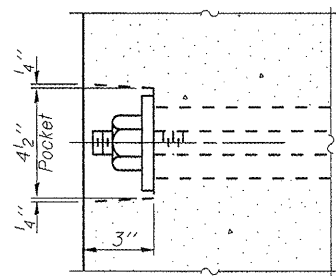


FABRIC BEARING PAD
(Interior - 12 Required)

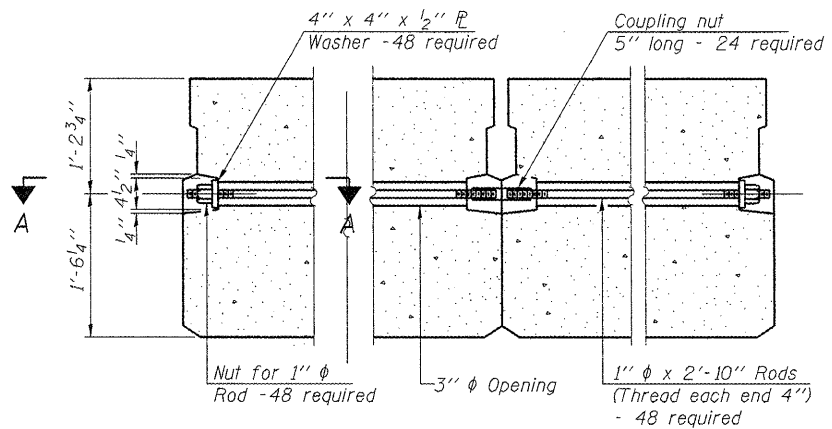


FABRIC BEARING PAD
(Exterior - 2 Required)

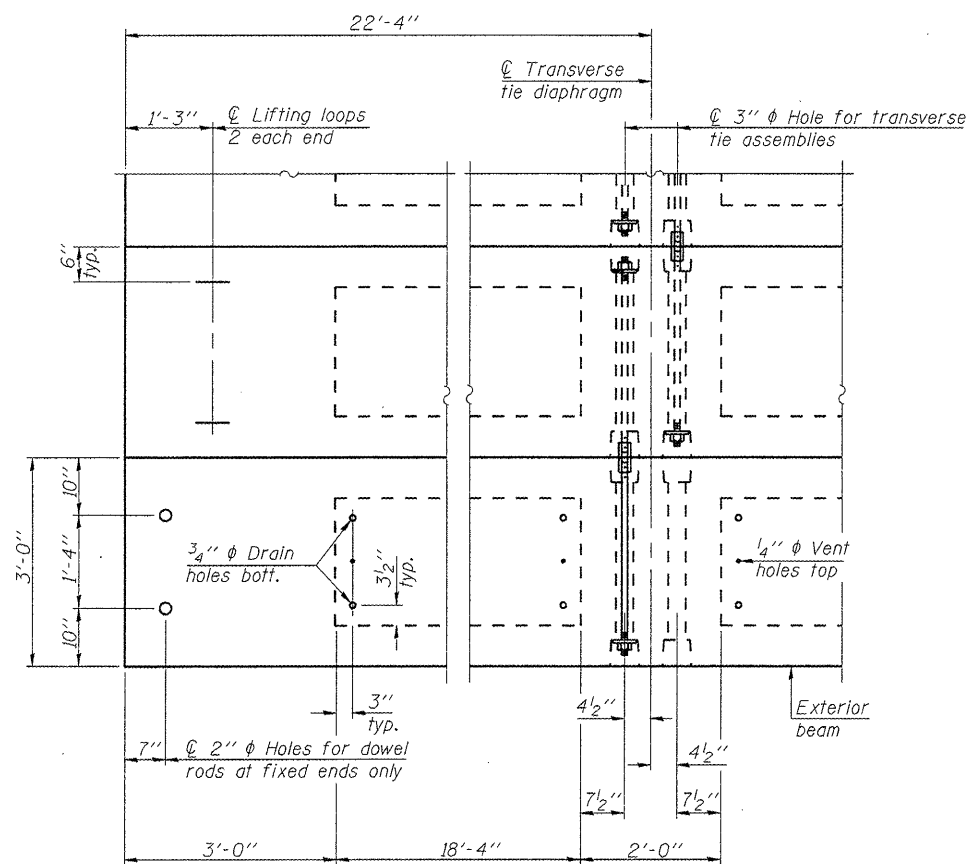
EXPANSION



SECTION A-A



TYPICAL TRANSVERSE TIE ASSEMBLY



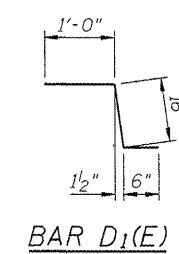
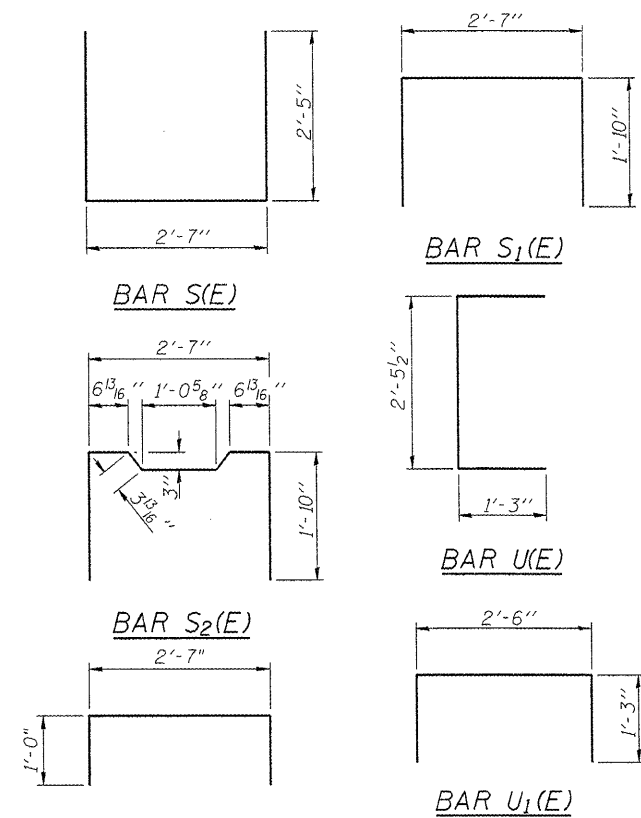
PLAN VIEW

Note: Connect beams in pairs with the transverse tie configuration shown.

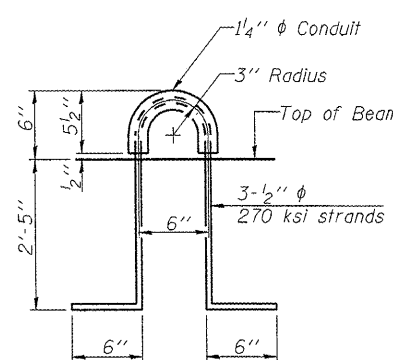
DESIGNED -	BPS
CHECKED -	GSP
DRAWN -	BPS/MJB
CHECKED -	GSP

NOTES

- Prestressing steel shall be uncoated high strength, low relaxation 7-wire strand, Grade 270. The nominal diameter shall be 1/2" and the nominal cross-sectional area shall be 0.153 sq. in.
- The 1" rods in the transverse tie assembly shall be tightened to a snug fit and the threads set. Pockets on exterior faces of bridge shall be filled with grout after transverse tie assembly is in place.
- Reinforcement bars shall conform to ASTM A 706, Grade 60. (See Special Provisions).
- Two 1/8" fabric adjusting shims of the dimensions of the exterior bearing pad shall be provided for each bearing pad location.
- A minimum 2 1/2" diameter lifting pin shall be used to engage the lifting loops during handling.
- Corrosion Inhibitor, per Article 1020.05(b)(12) and 1021.06 of the Standard Specifications, shall be used in the concrete for precast prestressed concrete deck beams.
- Compressive strength of prestressed concrete, f'c, shall be 6000 psi.
- Compressive strength of prestressed concrete at release, f'ci, shall be 5000 psi.



BAR D1(E)



LIFTING LOOP DETAIL

BILL OF MATERIAL

Precast Prestressed Conc. Deck Bms. (33" depth)	Sq. Ft.	2,594
---	---------	-------

33" X 36" PPC DECK BEAM DETAILS
STRUCTURE NO. 016-2529

SHEET NO. 12 15 SHEETS	F.A.P. RTE.	SECTION	COUNTY	TOTAL SHEETS	SHEET NO.
	305	1415 B	COOK	75	35
FED. ROAD DIST. NO. 7 ILLINOIS			CONTRACT NO. 60F60		
FED. AID PROJECT					



G:\proj\sect.2082.305\CA000\Str\structure\1\Shk\0162529-PPC3.dgn