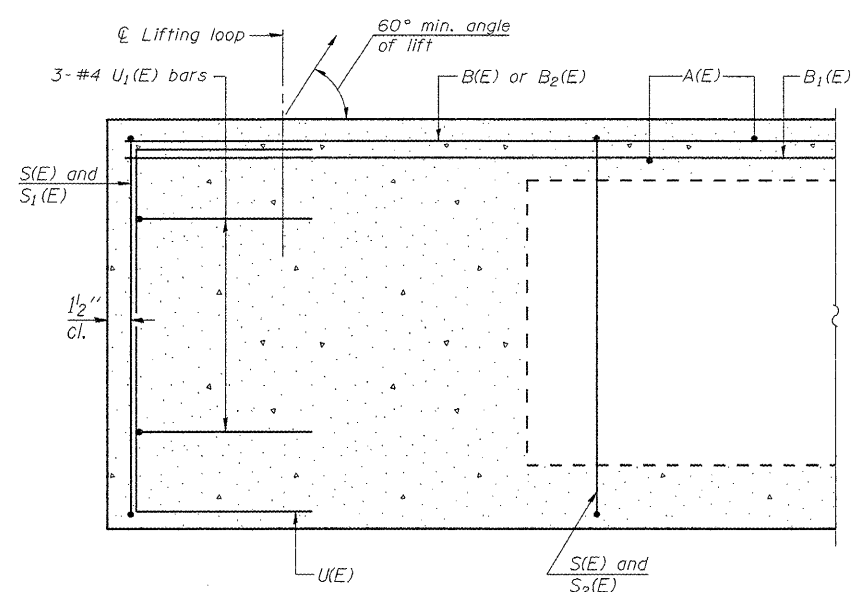
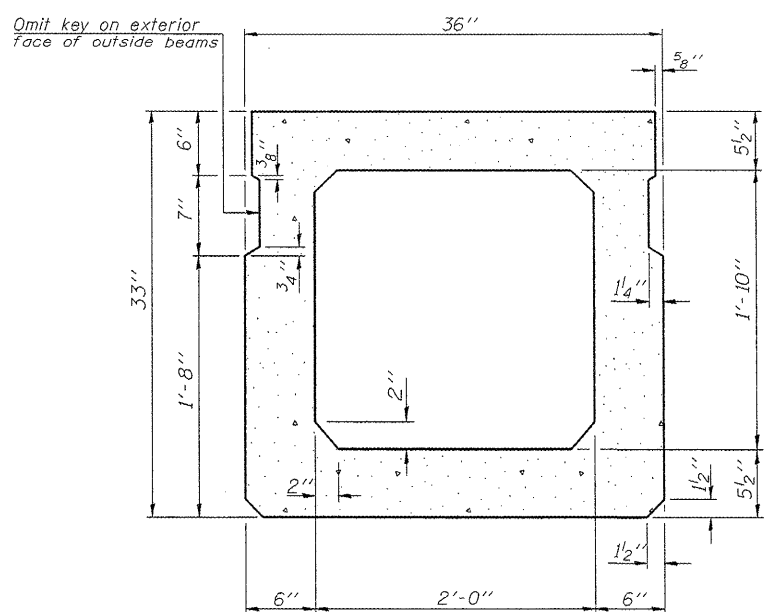


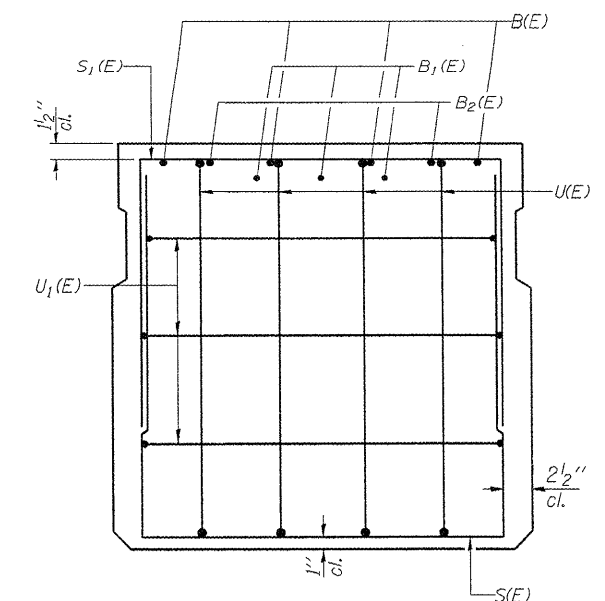
STATE OF ILLINOIS  
DEPARTMENT OF TRANSPORTATION



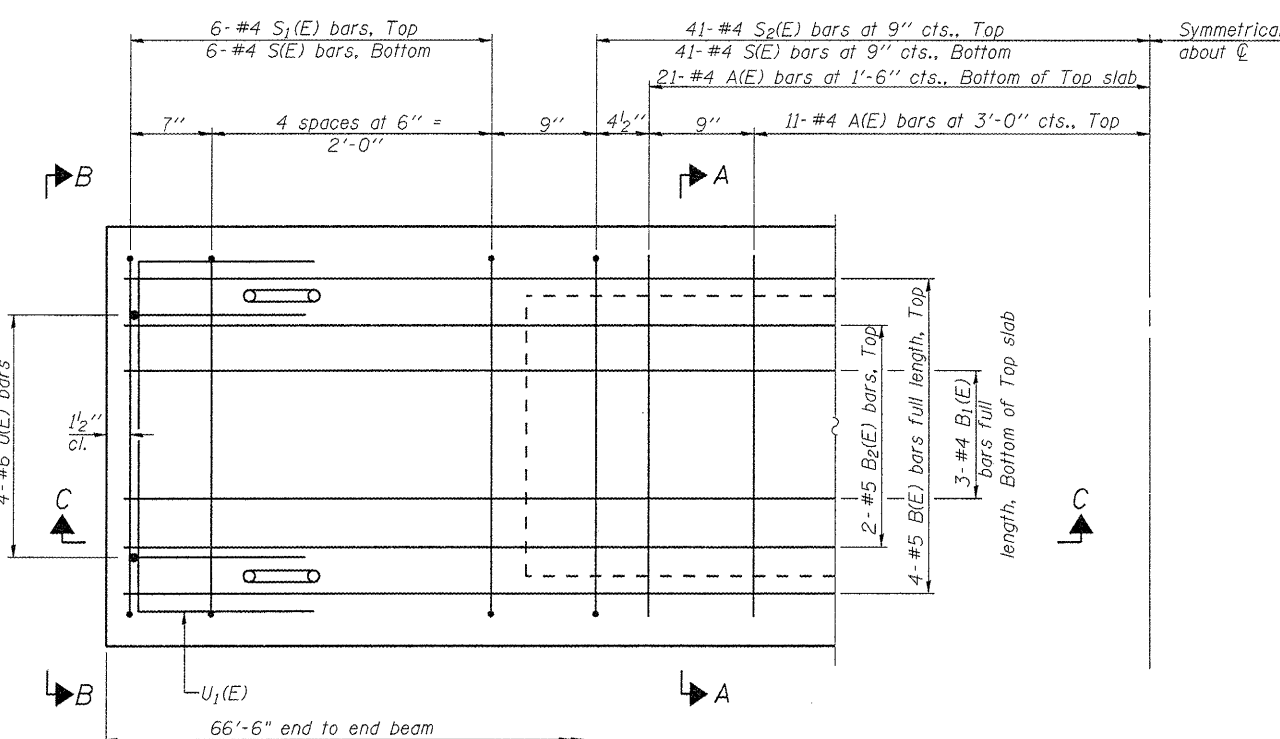
SECTION C-C



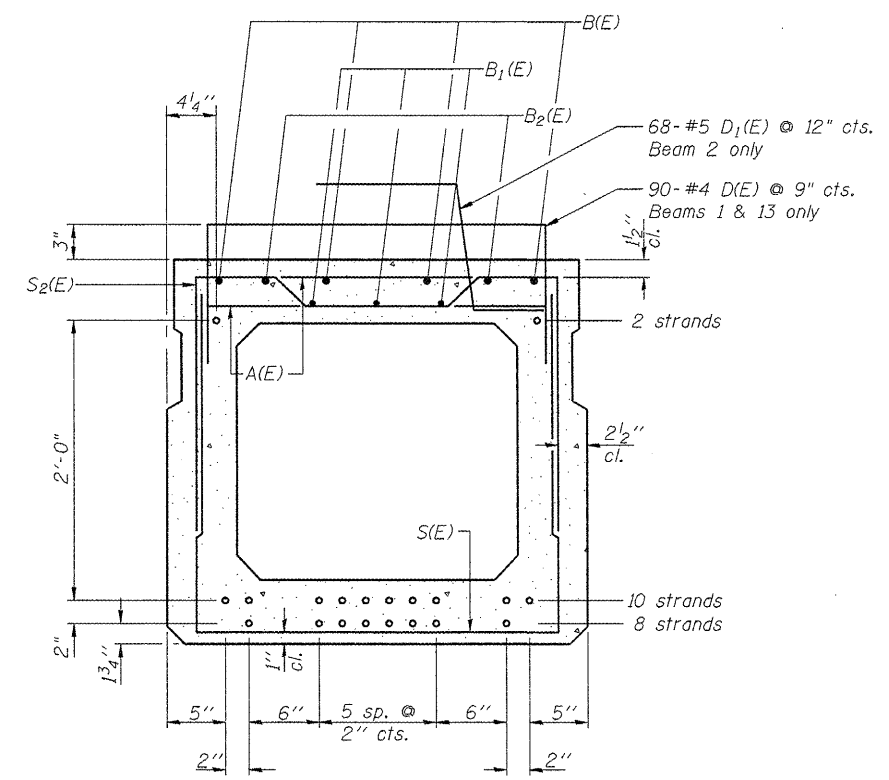
SECTION A-A  
(Showing dimensions)



VIEW B-B



PLAN VIEW



SECTION A-A  
(Showing reinforcement and permissible strand locations)

BAR LIST  
ONE BEAM ONLY  
(For information only)

Bar	No.	Size	Length	Shape
A(E)	64	#4	2'-7"	—
B(E)	8	#5	34'-3"	—
B1(E)	6	#4	34'-0"	—
B2(E)	4	#5	34'-3"	—
D(E)	90	#4	4'-7"	⌋
D1(E)	68	#5	2'-10"	⌋
S(E)	94	#4	7'-5"	⌋
S1(E)	12	#4	6'-3"	⌋
S2(E)	82	#4	6'-6"	⌋
U(E)	8	#6	5'-0"	⌋
U1(E)	6	#4	5'-0"	⌋

Note: See Sheet 12 of 15 for additional details and Bill of Material.

Note: Spacing of S(E) and S2(E) bars may be adjusted up to 4" in the immediate area of the transverse tie diaphragms to miss the block outs for the transverse ties.

Note: Place the number of strands specified in each row symmetrically about the centerline of beam in the permissible strand locations shown.

33" x 36" PPC DECK BEAM  
STRUCTURE NO. 016-2529

DESIGNED -	BPS
CHECKED -	GSP
DRAWN -	BPS/MJB
CHECKED -	GSP

SHEET NO. 11	F.A.P RTE.	SECTION	COUNTY	TOTAL SHEETS	SHEET NO.
	305	1415 B	COOK	75	34
15 SHEETS	FED. ROAD DIST. NO. 7 ILLINOIS		CONTRACT NO. 60F60		
FED. AID PROJECT					



G:\projec\2082305\CADD\Structural\Shs\0162529-PPC2.dgn